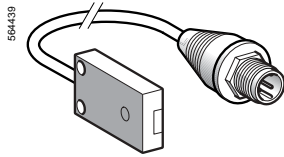


Ultrasonic sensors

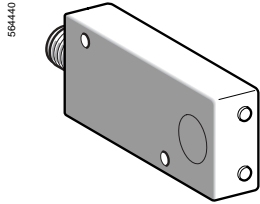
Osisonic[®], Optimum and Universal

Plastic case, flat form

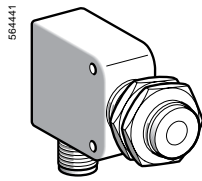
d.c. supply, solid-state output



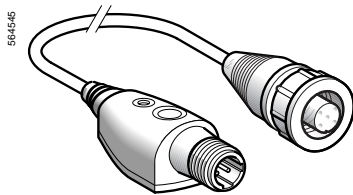
XX7 F1A2 ● AL01M12



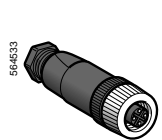
XX7 K1A2 ● AM12



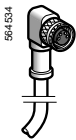
XX7 V1A1 ● AM12



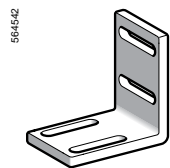
XXZ PB100



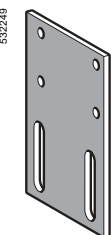
XZ CC12FD ● 40B



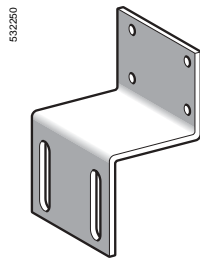
XZ CP1141L ●



XXZ 1933



XXZ 3074F



XXZ 3074S

Optimum sensors

Sensors	Sensing distance (Sn)	Function	Output	Reference	Weight
mm	m				kg
7.6 x 19 x 33	0.10	NO	NPN	XX7 F1A2NAL01M12	0.040
			PNP	XX7 F1A2PAL01M12	0.040
16 x 30 x 74	0.25	NO	NPN	XX7 K1A2NAM12	0.050
			PNP	XX7 K1A2PAM12	0.050

Universal sensors

18 x 33 x 60 + Ø 18	0.50 (adjustable)	NO	NPN	XX7 V1A1NAM12	0.060
			PNP	XX7 V1A1PAM12	0.060

Accessories

Description	For use with sensor	Reference	Weight
Teach mode pushbutton	XX5 18A3 ● AM12	XXZ PB100	0.035
Selection of detection window	and XX7 V1A1 ● AM12		
Input:			
M12 female connector			
Output:			
M12 male connector			

Cabling accessories

Connectors	For use with sensor	Type	Reference	Weight	
M12	XX7 ●●●●●	Metal clamping ring	Straight	XZ CC12FDM40B	0.020
			Elbowed	XZ CC12FCM40B	0.020
		Plastic clamping ring	Straight	XZ CC12FDP40B	0.020
			Elbowed	XZ CC12FCP40B	0.020

Pre-wired connectors	For use with sensor	Type	Length m	Reference	Weight
M12	XX7 ●●●●●	Straight	2	XZ CP1141L2	0.090
			5	XZ CP1141L5	0.190
			10	XZ CP1141L10	0.370
		Elbowed	2	XZ CP1241L2	0.090
			5	XZ CP1241L5	0.190
			10	XZ CP1241L10	0.370

Fixing accessories

Description	For use with sensor	Reference	Weight
90° fixing bracket	XX7 F	XXZ 1933	0.025
Flat mounting plate	XX7 K	XXZ 3074F	0.025
Cranked mounting plate	XX7 K	XXZ 3074S	0.075