

# DRIVE ENCLOSURE USER MANUAL

MODELS 130295 & 130349

VERSION 2



*At Right: Model 130295  
Below: Model 130349*



[manhattanproducts.com](http://manhattanproducts.com)

MAN-130295/130349-UM-0515-04

## INTRODUCTION

Thank you for purchasing this Manhattan Drive Enclosure, Model 130295 ver. 2 (SuperSpeed USB 3.0 SATA 3.5”), or Model 130349 ver. 2 (SuperSpeed USB 3.0 SATA 2.5”).

With support for data transfer rates of up to 5 Gbps and drives up to 1 TB (Model 130349) or 3 TB (Model 130295), this device helps you optimize high-performance computer storage applications.

A convenient built-in, one-touch copy feature helps to quickly transfer, share and archive important data, while the durable, two-piece construction protects sensitive drives from exposure and daily hazards. It’s a versatile and portable data solution without bulky external power supplies or annoying cables and adapters.

By following the instructions in this user manual, you’ll soon be enjoying these popular features:

- Plug and play and hot-swappable; Windows and Mac compatible
- Lifetime Warranty (For a complete list of country-specific warranties, go to [manhattanproducts.com/warranty](http://manhattanproducts.com/warranty).)

### System Requirements

- Available USB 3.0 Standard-A port
- Windows XP/Vista/7/8; or Mac OS 8.6 or later versions

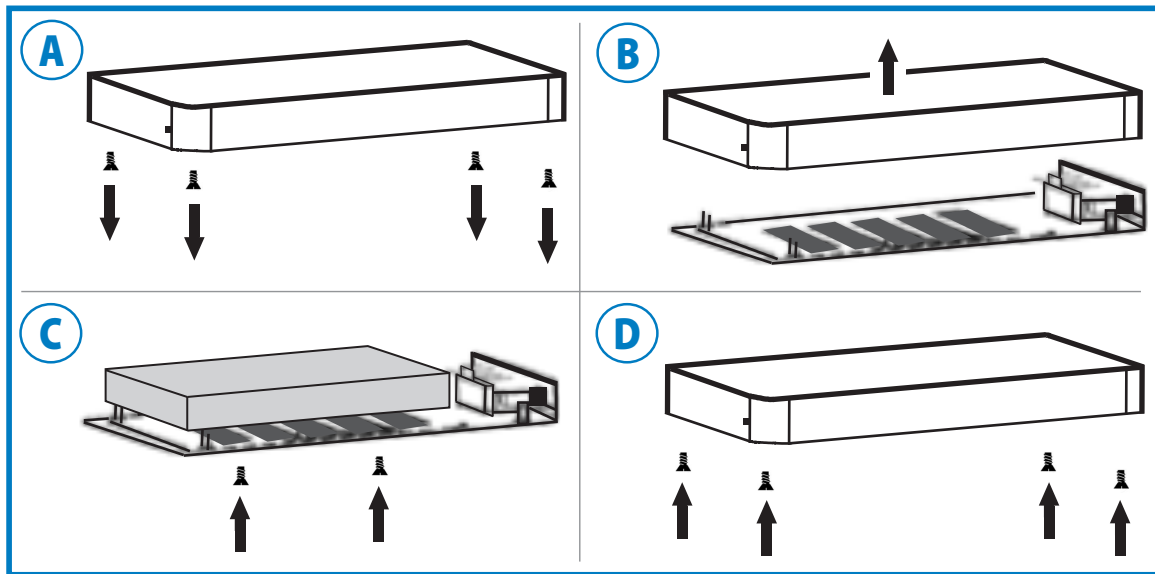
### Package Contents (Model 130295)

- Drive Enclosure
- USB 3.0 cable, power adapter, screws (8), rubber feet (4)
- Software CD with user manual; multilanguage quick install guide

### Package Contents (Model 130349)

- Drive Enclosure
- USB 3.0 cable, USB-to-DC power cable, screws (8), rubber feet (4)
- Software CD with user manual; multilanguage quick install guide

## HARDWARE & DRIVER INSTALLATION



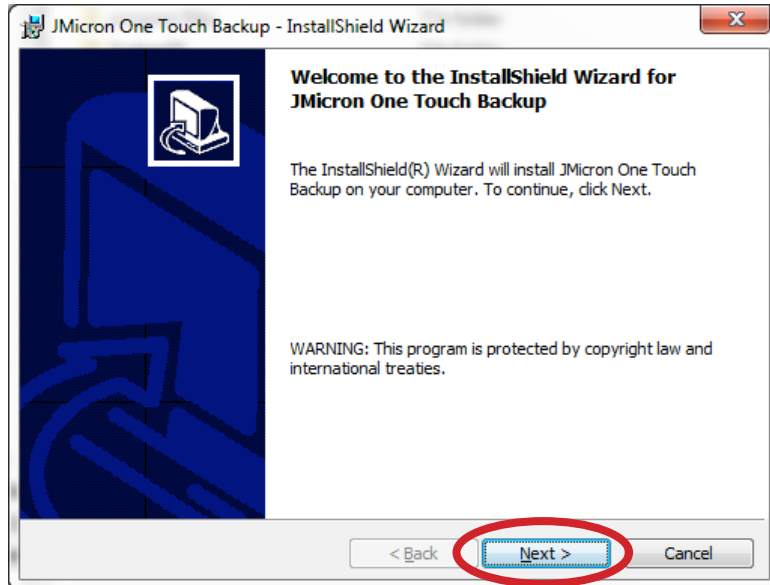
1. Remove the 4 screws on the bottom of the enclosure (**A**) and lift off the top (**B**).
2. Connect the hard drive to the SATA data and power connectors on the enclosure, then secure it to the enclosure using the included screws (**C**).
3. Re-assemble the enclosure (**D**) using the 4 screws in Step 1.
4. Using the included USB cable, connect the enclosure to a USB port on the computer.

Once the enclosure is connected to your PC, your system will automatically detect the new hardware and complete the setup, confirmed when “USB Mass Storage Device” displays in the Device Manager folder.

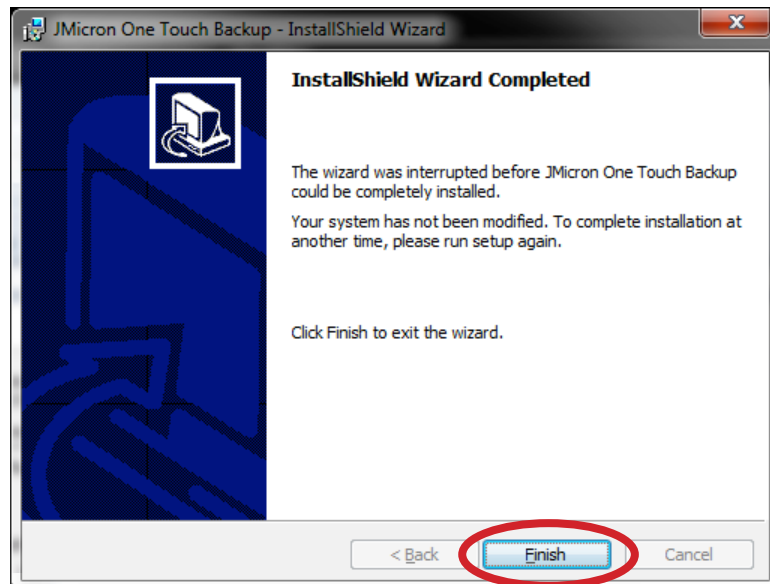
## SOFTWARE INSTALLATION

These steps are for the installation of the convenient one-touch backup software. **NOTE:** This software doesn't support Mac operating systems. Some images may look different on your computer, as your software version may be slightly different than the one represented here.

1. Load the included software CD. The JMicon Backup program's InstallShield Wizard Welcome screen will display automatically. Click **Next** to continue.

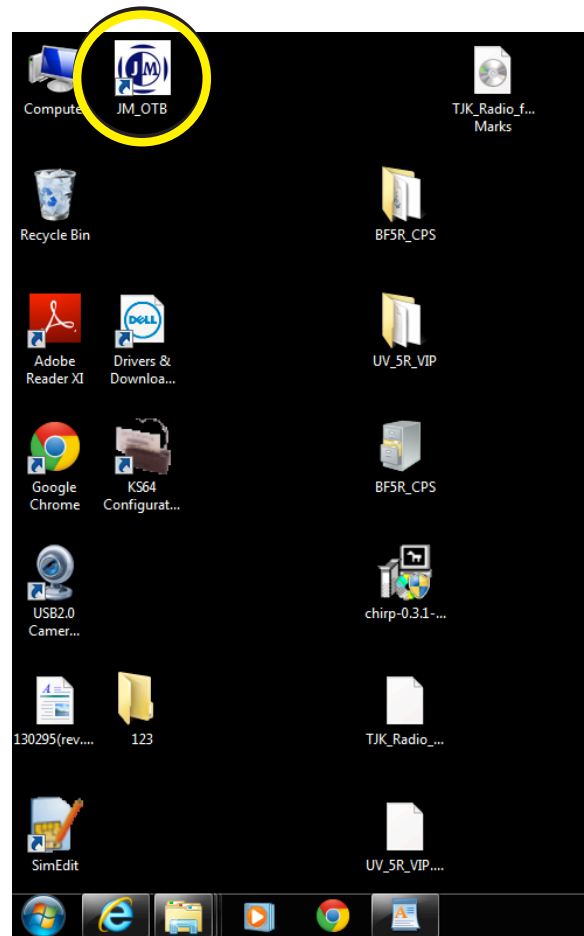


2. When the wizard's Complete screen displays, click **Finish**. **NOTE:** Most screens present the option of clicking **Back** to return to a previous screen or **Quit** to stop the installation procedure.

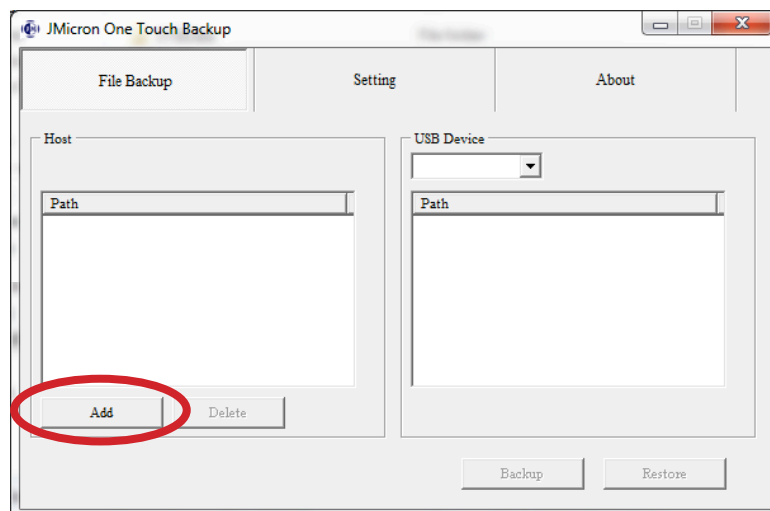


## BACKING UP FILES

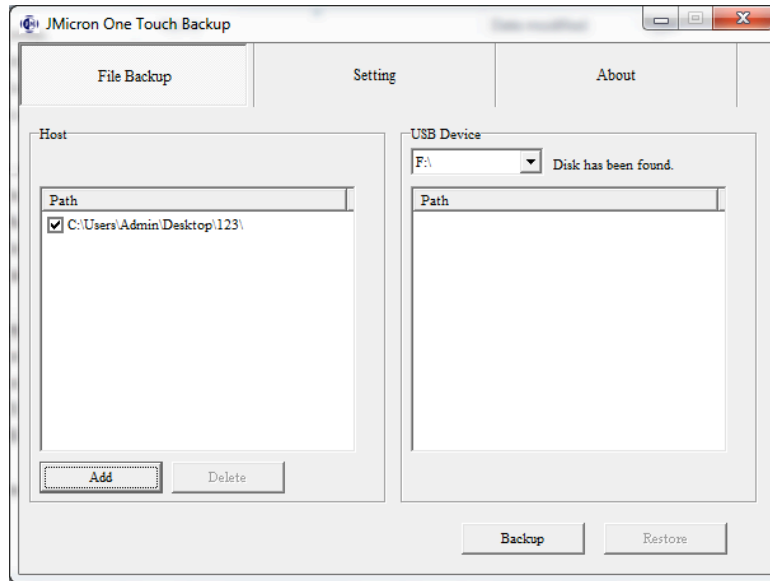
1. When the JMicon icon displays on the desktop (right), double-click it to launch the program (or go to Start / Programs / JMicon Storage on your desktop).



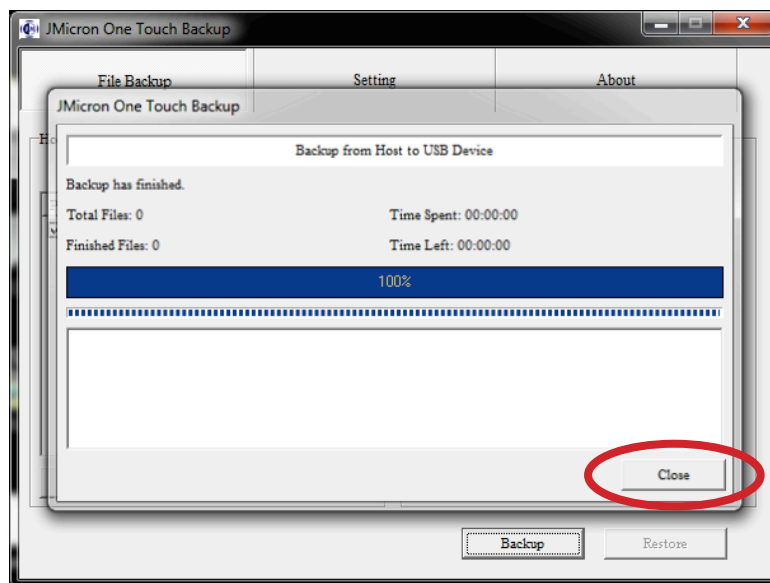
2. When the backup program is opened, the initial screen presents two options for Backup Files: Backup or Restore. To back up files, click **Add** in the Host panel. You can click on the folders you want to select for backup.



Backup files will be stored in a sub-folder called “Backup.”



3. With the destination drive and folder selected, click **Backup** for a default backup. The operation will display the files being backed up as well as a status progress bar. After all files selected are backed up, a pop-up message will announce that the backup is complete and successful. Click **Close** to finish.

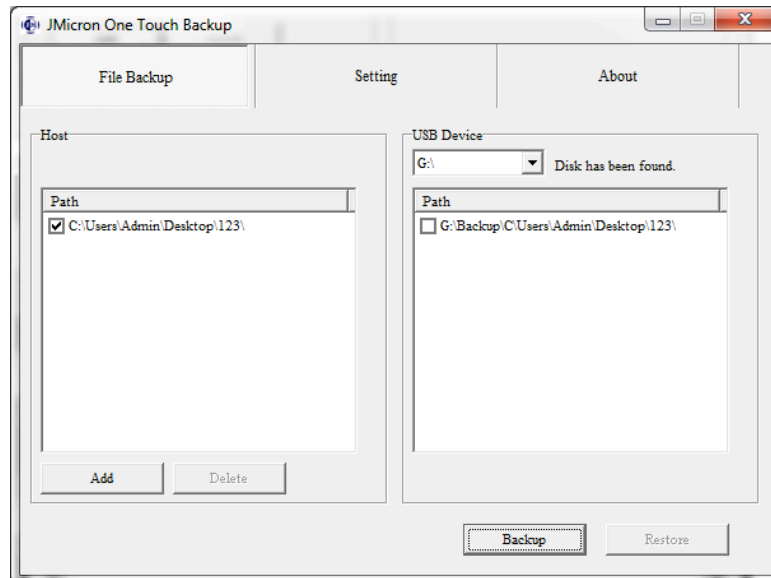


## ONE-TOUCH BACKUP FUNCTION

With the drive enclosure loaded with a backup hard drive and connected to your computer (and powered on), you can simply press the Backup button on the enclosure to launch the software and begin backing up selected files.



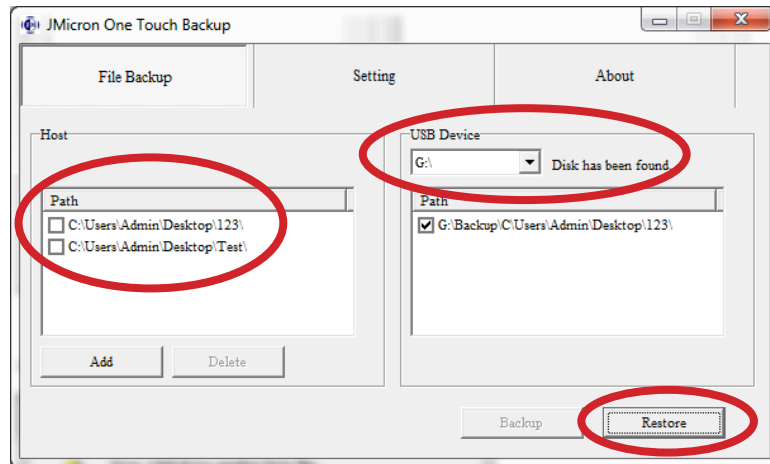
Shown:  
Model  
130295



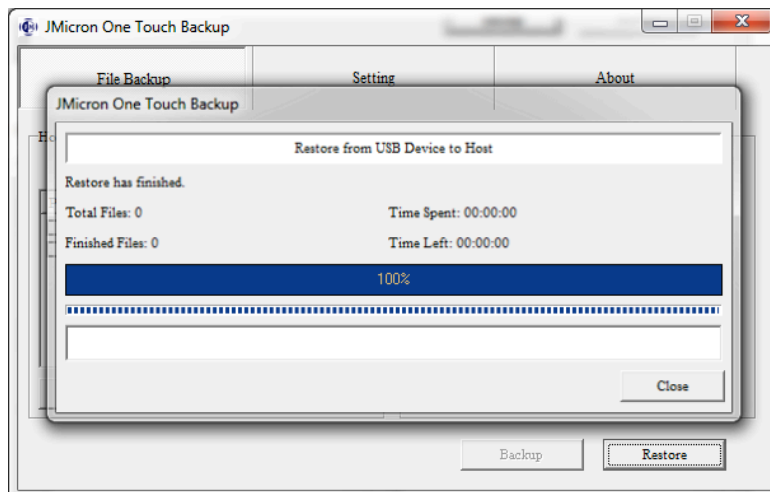
- Allow the backup to continue while the status screen is displayed. (Or click **Abort** if you need to interrupt or stop the process.)
- When the backup message displays, click **Close**.
- If you last set to your options in order to back up modified files only, the program will only back up the files that have been modified since your previous backup operation, which will save you more time without having to back up all needed files again.

## RESTORING BACKED-UP FILES

1. When the JMicon icon displays on the desktop (as shown on Page 5), double-click it to launch the program (or go to Start / Programs / JMicon Storage on your desktop).
2. When the backup program is opened, the Welcome screen presents two options for Backup Files: Backup or Restore. To restore a backed-up file, select it from the drop-down menu in the USB Device panel (below, right-hand side).



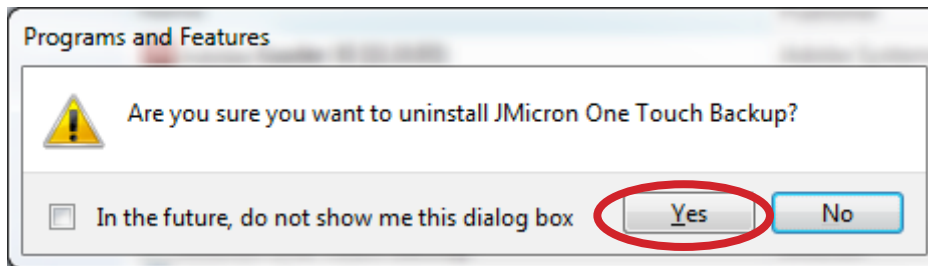
3. When the desired folder is selected (check the box), the files corresponding to the backed-up files will display in the “Path” window of the Host panel (above, left-hand side). Select the backup file(s) you want to restore (check the box or boxes) and click **Restore**.
4. A progress bar will display to indicate the status of the restoration process. After all backed-up files are restored and the “Restore” message displays, click **Close** to finish, then go to the intended directory folder to confirm that the appearance of the restored file(s).





## UNINSTALLING THE BACKUP SOFTWARE

1. Go to Control Panel / Programs / Uninstall a program / JMicron One Touch Backup. Click **Uninstall** or **Remove** to continue, then click **Yes**.



2. When the uninstall is complete, you'll be prompted to restart your computer. Close all programs and click **Finish** to restart your computer.