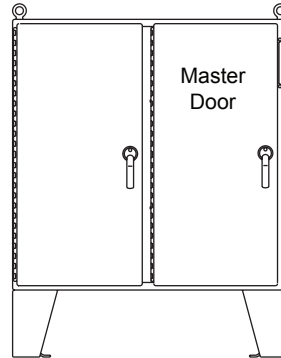


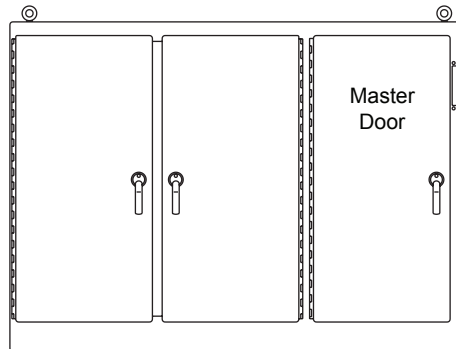
## OPERATOR ADAPTER ABL

Installation Instructions for Allen-Bradley Bulletin 1494V,  
1494C, 140G and 140U Large Handle Disconnect Switches

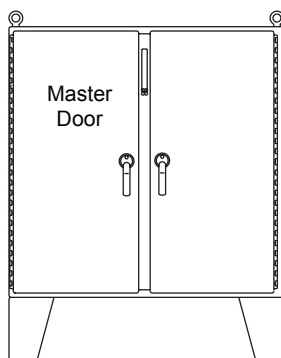
For floor-mounted enclosures with  
the disconnect on the right flange



For one- through six-door free-standing enclosures  
with the disconnect the the right flange



For floor-mounted enclosures with  
the disconnect on the centerpost



## **WARNING**

The functions, fits, and clearances of the installation described hereon are calculated from information supplied by the manufacturers of the equipment to be installed. Be certain to check the function, fits, and clearances of all equipment both before and after installation to assure that it operates properly and safely and meets all applicable codes, standards, and regulations.

In the event the completed installation does not function properly or fails to meet any such codes, standards, or regulations, do not attempt to make alterations or operate the equipment. Report such facts immediately to:

Customer Service Dept.  
Pentair Equipment Protection  
2100 Hoffman Way  
Minneapolis, MN 55303-1745  
763.422.2211  
hoffmanonline.com

### Parts List

Operator Adapter, Catalog Number ABL, for Allen-Bradley Bulletins 1494V, 1494C, 140G and 140U Disconnects

Item No.	Description	Part No.	Qty.
1	ADAPTER PLATE, LARGE	879 32136	1
2	PLATE GASKET	89109613	1
3	SCREW, 1/4-20X1/2 PAN HEAD	99401031	4
4	SLIDE ARM, ASSEMBLY	27111002	1
5	SHOULDER COLLAR, 3/4 DIAMETER	27112001	1
6	SCREW, 5/16-18X1 HEX HEAD	99401081	1
7	WASHER FLAT	22101003	2
8	LOCK WASHER, 1/4 INTERNAL TEETH	99401300	2
9	NUT, HEX 1/4-20	99401406	2
10	DOOR CATCH	23101002	1
11	SCREW, 10-32X3/8 PAN HEAD	99401007	2
12	LOCK WASHER, #10 INTERNAL TEETH	99401307	2
13	NYLON WASHER	23132003	4
14	LOCKWASHER, 1/4 SPRING	99401305	1
15	INSTALLATION INSTRUCTIONS	89114651	1

## INTRODUCTION

This installation instruction is for the Allen–Bradley Large Handle.

Bulletin 1494V, 1494C, 140G and 140U mechanisms.

These mechanisms are for disconnect switches and circuit breakers mounted in Hoffman two door, floor–mounted with cutout on right hand flange or centerpost and one through six door, free–standing enclosures with the disconnect on the right flange.

### ALLEN-BRADLEY SMALL HANDLE INSTALLATION STEPS

See Figure 1 for 1494V and 140G Variable Depth or Figure 2 for 1494C, 140G and 140U Cable Control.

#### Step 1

Install adapter plate (item 1) and plate gasket (item 2) on the inside of the enclosure, behind the rectangular opening provided. Gasket side with PSA should be attached to the Adapter Plate. Secure in place with four screws (item 3), and four nylon washers (item 13).

#### Step 2 – Install Large Handle

**(1494V, 1494C, 140G and 140U)** Assemble the Allen-Bradley operating mechanism and 1494F-M2 or 1494F-S2 large handle to the adapter plate which was installed in Step 1. Omit cap screw and lockwasher which fit into bottom hole of Allen–Bradley operating handle.

#### Step 3 – Install Slide Arm and Defeater Bracket

(1494V and 140G Variable Depth) Install slide arm (item 4) through the hole in bottom of Allen–Bradley spring bracket. Put Allen–Bradley defeater bracket through slot in the end of the slide arm and mount per Allen–Bradley instructions. Place the smaller diameter end of 3/4 diameter shoulder collar (item 5) through oval slot in slide arm. Install longer cap screw (item 6) with lockwasher (item 14) through shoulder collar into bottom mounting hole of Allen–Bradley operating handle and tighten. The slide arm should move up and down smoothly.

(1494C, 140G and 140U Cable Control) Put Allen–Bradley defeater bracket through slide arm (item 4) end slot and mount defeater bracket per Allen–Bradley instructions. Place the smaller diameter end of 3/4 diameter shoulder collar (item 5) through oval slot in slide arm. Install longer cap screw (item 6) with lockwasher (item 14) through shoulder collar into bottom mounting hole of Allen–Bradley operating handle and tighten. The slide arm should move up and down smoothly.

#### Step 4

Attach the bottom of the slide arm assembly (item 4) to the offset arm of the operator release mechanism. Use two flat washers (item 7), two lockwashers (item 8), and two hex nuts (item 9). Do not tighten until parts are adjusted. (See Step 5B).

#### Step 5 – The operator release mechanism is adjustable in two places

(A) Check the adjustment of the factory-installed roller bracket. The door latch should hit against the latch portion of the roller bracket when the door is closed and latched. Adjust up or down if necessary. The mechanism will then provide the necessary up–down motion required to operate the safety lock release in the Allen–Bradley operating handle.

(B) Adjust the length of the slide arm assembly with proper adjustment of the slide arm. The safety lock (in Allen–Bradley operating handle) should release just before the master door is fully latched. Lengthen slide arm if safety lock releases too soon. Shorten slide arm if safety lock releases too late.

#### Step 6

Attach the door catch (item 10) provided by Hoffman to the tapped spacer on the door using the bottom set of mounting holes. Use two screws (item 11) and two lockwashers (item 12). The door catch prevents the door from being opened when the Allen–Bradley operating handle is in the “ON” position.

#### Step 7

Drill and tap holes in panel **PER ALLEN-BRADLEY INSTRUCTIONS**.

#### Step 8

Install panel in enclosure.

#### Step 9

Mount disconnect switch or circuit breaker on panel using Allen-Bradley instructions and parts. For variable depth disconnects, find the enclosure depth dimension. See Allen–Bradley instructions to cut the connecting rod to length required and install and adjust Allen–Bradley connecting rod per Allen–Bradley instructions.

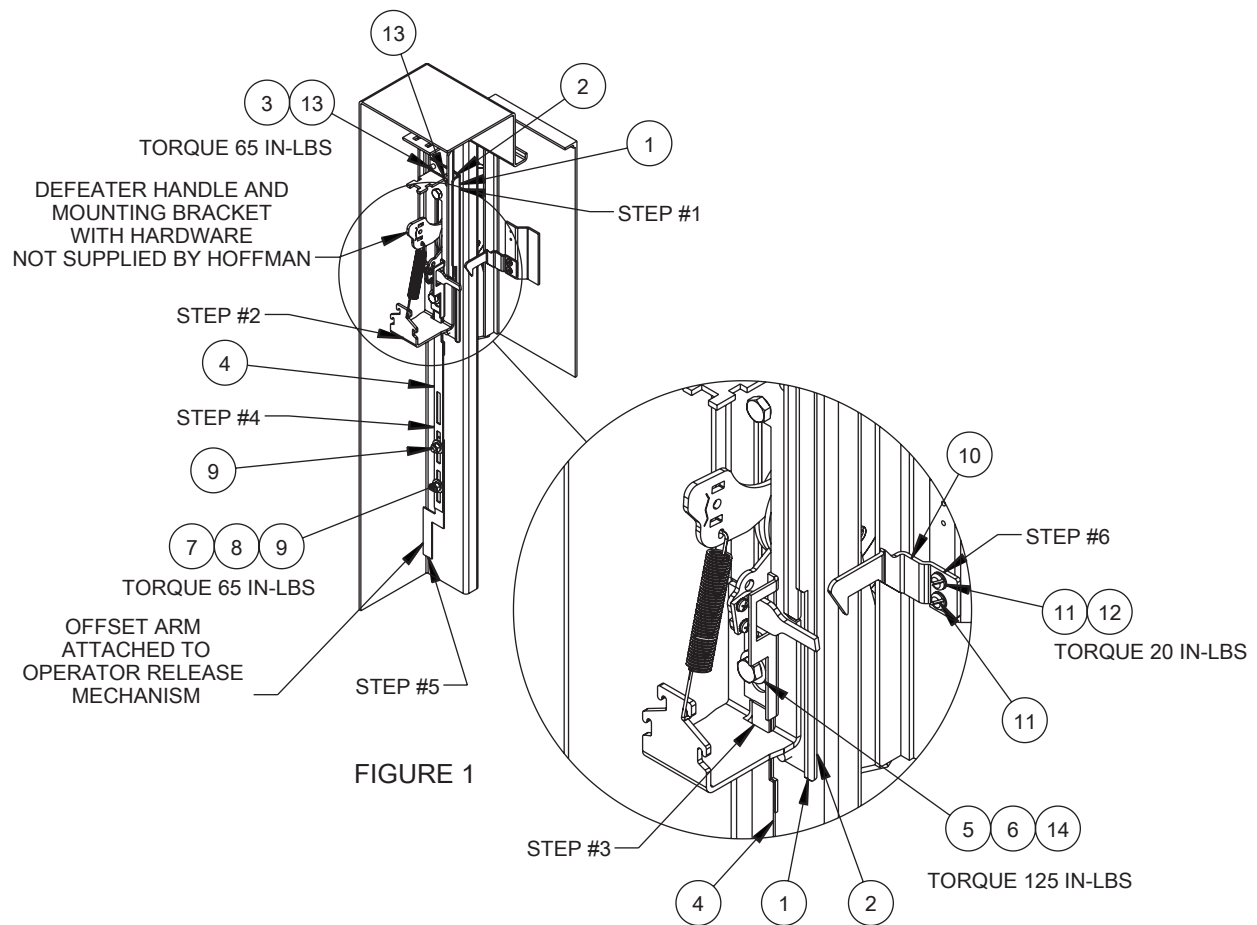


FIGURE 1

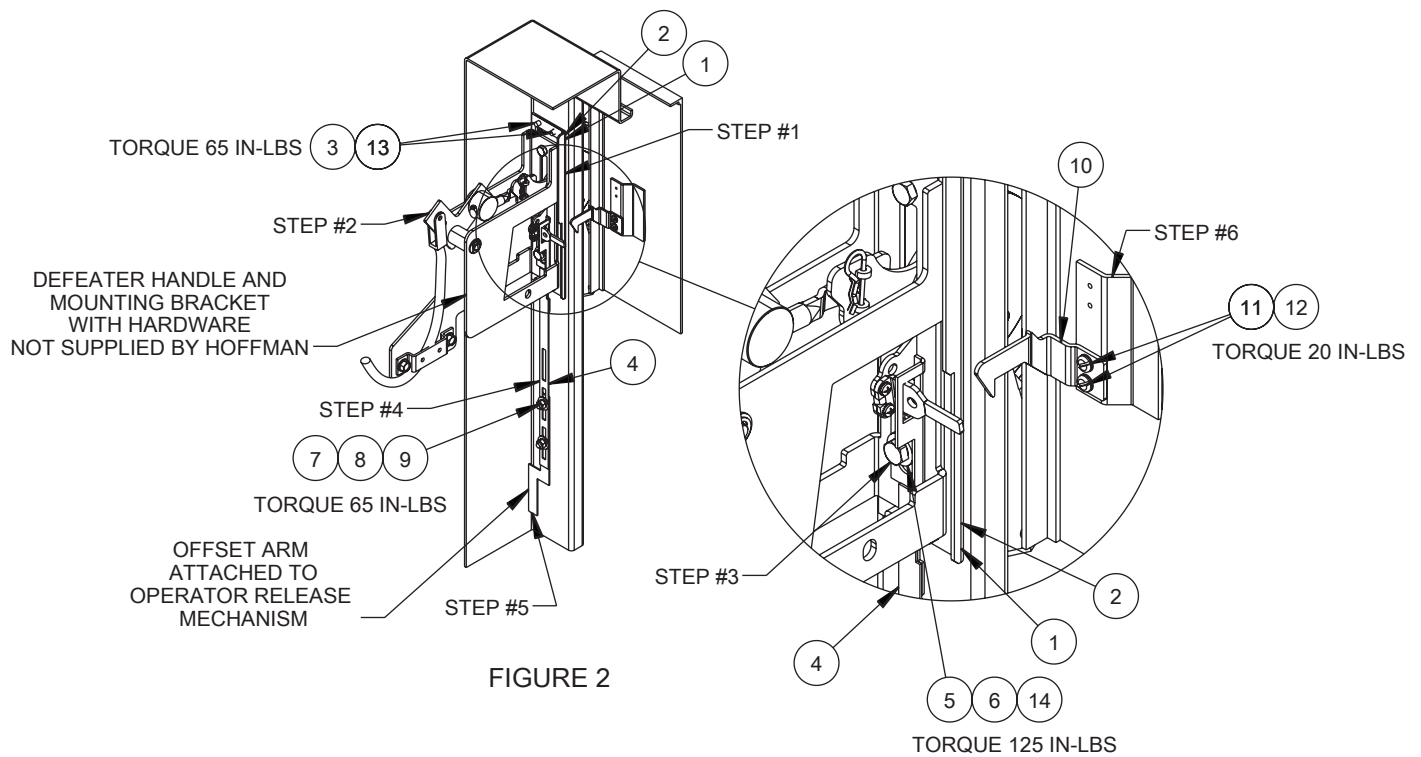


FIGURE 2