

### Tooling Information

ILSCO												
Lug/Splice Size	Wire Size	Color Code	MT-25 <sup>b</sup> Hand Dieless	94285	IDT-6 <sup>b</sup> , IDT-6H <sup>b</sup> , IDTB-6 <sup>b</sup> series (6-Ton Hydraulic Dieless)	IDT-12-N <sup>b</sup> (Dieless)	ILC-12-N, ILC-12H-N, ILCB-12 series, IMT-12 (12-Ton Hydraulic)	ILC-15H	IVTB-6 <sup>b</sup> (Dieless)	Crimps	Die Code	Crimps
8	8 AWG	Blue	1	M,K	2	1		ILD-374	1	ILD-374	1	1
6	6 AWG	Gray	1	K,K	2	1	1	ILD-346	1	ILD-346	1	1
4	4 AWG	Green	1	H,H	3	1	1	ILD-375	1	ILD-375	1	1
2	2 AWG	Pink	2	E,A	3	1	1	ILD-348	1	ILD-348	1	2
1	1 AWG	Gold	2	E,A	3	1	1	ILD-471	1	ILD-471	1	2
1/0	1/0 AWG	Tan	2	A,C	3	1	1	ILD-296	1	ILD-296	1	2
2/0	2/0 AWG	Olive	2	A,B	3	2	1	ILD-297	1 <sup>c</sup>	ILD-297	1 <sup>c</sup>	2
3/0	3/0 AWG	Ruby	2	A,A	3	2	1	ILD-467	1 <sup>c</sup>	ILD-467	1 <sup>c</sup>	2
4/0	4/0 AWG	White	2			2	1	ILD-298	2	ILD-298	2	2
250	250 kcmil	Red				2	1	ILD-324	2	ILD-324	2	2
300	300 kcmil	Blue				2	1	ILD-470	2	ILD-470	2	2
350	350 kcmil	Brown				2	1	ILD-299	2	ILD-299	2	2
400	400 kcmil	Green				2	1	ILD-472	4	ILD-472	4	2
500	500 kcmil	Pink				2 <sup>e</sup>	1	ILD-300	4	ILD-300	4	2
600	600 kcmil	Black				2 <sup>e</sup>	1	ILD-473	4	ILD-473	4	
700/750	700/750 kcmil	Yellow				2 <sup>e</sup>	1	ILD-936	3	ILD-936	3	
700/750 <sup>g</sup>	900 kcmil Compact Al	Yellow						ILD-936	3	ILD-936	3	
1000	1000 kcmil	Brown								ILD-302	3	

**Additional Information:**

- 1) The ALNS, ALND, ASNS, ASND, ALNB, ASNB, ALNN, ASNN, and ASN connectors are marked with the die numbers and required number of crimps for ILSCO hydraulic tools. When using other listed tools, consult chart for crimps required. Crimps should be evenly space on connector.
- 2) Consult manufacturers data for catalog numbers of dies for each tool.

<sup>a</sup> Number of crimps shown on chart must be applied to both sides of ASN splice connector's centerline.

<sup>b</sup> Dieless tools are not color coded and do not require dies.

<sup>c</sup> For ASN splicer connector, apply 2 crimps on both sides of splice connector's centerline.

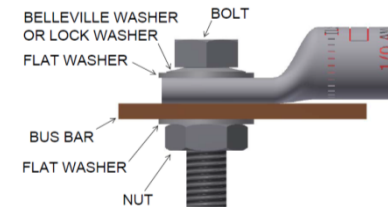
<sup>d</sup> For ASN splicer connector, apply 3 crimps on both sides of splice connector's centerline.

<sup>e</sup> For ASN splicer connector, apply 4 crimps on both sides of splice connector's centerline.

<sup>g</sup> 700/750 size lug/splice are additionally rated for use with 900 kcmil compact aluminum wire.

### Connector Installation

1. Select proper connector for the wire size to be used. Series can be used with concentric, compressed or compact aluminum or copper wire.
2. Strip wire insulation using an approved method. Do not nick or ring the wire. Remove any major coating on the wire.
3. Remove surface oxides from the wire with a wire brush.
4. Insert wire all the way into the barrel of the connector.
5. Select the proper die for approved tool. See chart above for approved tools and dies. Compress barrel from tang toward wire, or from inside of ASN connector towards wire.
6. When terminating an aluminum connector to a steel or copper stud, use a belleville or compression type washer in combination with a flat washer. Tighten until the belleville washer is flat.



## Information Sheet

### Series ALNS, ALND, ASNS, ASND, ALNB, ASNB, ALNN, ASNN, and ASN<sup>a</sup>

#### Compression Connectors for Aluminum or Copper Conductor

### Tooling Information

Lug/Splice Size			BURNDY								THOMAS AND BETTS				GREENLEE				ANDERSON		RIDGID			
			Die Code	Crimps	Crimps	Crimps	Die Code	Crimps	Die Code	Crimps	Die Code	Crimps	Crimps	Die Code	Crimps	Crimps	Die Code	Crimps	Crimps	Crimps	Crimps	Die Code	Crimps	
8	8 AWG	Blue	X8CART	1	1	1	U8CABT	1	U8CABT	1	1	ILD-374	1	1	ILD-374	1	1	ILD-374	1	1	1	1	ILD-374	1
6	6 AWG	Gray	W161	1	1	1	U6CABT	1	U6CABT	1	1	ILD-346	1	1	ILD-346	1	1	ILD-346	1	1	1	1	ILD-346	1
4	4 AWG	Green	W162	2	1	1	U4CABT	1	U4CABT	1	1	ILD-375	1	1	ILD-375	1	1	ILD-375	1	1	1	1	ILD-375	1
2	2 AWG	Pink	W239	2	1 <sup>c</sup>	1	U2CABT	1	U2CABT	1	1	ILD-348	1	1	ILD-348	1	1	ILD-348	1	1	2	1	ILD-348	1
1	1 AWG	Gold	W163	2	1 <sup>c</sup>	1	U1CABT	1	U1CABT	1	1	ILD-471	1	1	ILD-471	1	1	ILD-471	1	1	2	1	ILD-471	1
1/0	1/0 AWG	Tan	W241	2	1 <sup>c</sup>	1	U25ART	1	U25ART	1	1	ILD-296	1	1	ILD-296	1	1	ILD-296	1	1	2	1	ILD-296	1
2/0	2/0 AWG	Olive	W245	2	2	1	U26ART	2	U26ART	2	1	ILD-297	1 <sup>c</sup>	2	ILD-297	1 <sup>c</sup>	1	ILD-297	1 <sup>c</sup>	2	2	2	ILD-297	1 <sup>c</sup>
3/0	3/0 AWG	Ruby	W166	2	2	1	U27ART	2	U27ART	2	1	ILD-467	1 <sup>c</sup>	2	ILD-467	1 <sup>c</sup>	1	ILD-467	1 <sup>c</sup>	2	2	2	ILD-467	1 <sup>c</sup>
4/0	4/0 AWG	White	W660	2	2	1	U28ART	2	U28ART	2	2	ILD-298	2	2	ILD-298	2	1	ILD-298	2	2	2	2	ILD-298	2
250	250 kcmil	Red		2	2	1	U29ART	2	U29ART	2	2	ILD-324	2	2	ILD-324	2	1	ILD-324	2	2	2	2	ILD-324	2
300	300 kcmil	Blue		2	2	1	U30ART	2	U30ART	2	2	ILD-470	2	2	ILD-470	2	1	ILD-470	2	2	2	2	ILD-470	2
350	350 kcmil	Brown	W31ART	3	2 <sup>d</sup>	1	U31ART	2	U31ART	2	2	ILD-299	2	2	ILD-299	2	1	ILD-299	2	2	2	2	ILD-299	2
400	400 kcmil	Green		2	2	1	U32ART	4	U32ART	4	2	ILD-472	4	2	ILD-472	4	1	ILD-472	4	2	2	2	ILD-472	4
500	500 kcmil	Pink		2	2	1	U34ART	4	U34ART	4	2	ILD-300	4	2 <sup>e</sup>	ILD-300	4	1	ILD-300	4	2	2	2	ILD-300	4
600	600 kcmil	Black		2	2	1	U36ART	4	U36ART	4	2	ILD-473	4	2 <sup>e</sup>	ILD-473	4	1	ILD-473	4	2			ILD-473	4
700/750	700/750 kcmil	Yellow		2	2	1	U39ART	4	U39ART	4	2	ILD-936	3	2 <sup>e</sup>	ILD-936	3	1	ILD-936	3	4			ILD-936	3
700/750 <sup>g</sup>	900 kcmil compact Al	Yellow										ILD-936	3		ILD-936	3		ILD-936	3				ILD-936	3
1000	1000 kcmil	Brown				1 <sup>f</sup>			P44ART	4		ILD-302	3					ILD-302	3					

#### Additional Information:

- The ALNS, ALND, ASNS, ASND, ALNB, ASNB, ALNN, ASNN, and ASN connectors are marked with the die numbers and required number of crimps for ILSCO hydraulic tools. When using other listed tools, consult chart for crimps required. Crimps should be evenly space on connector.
- Consult manufacturers data for catalog numbers of dies for each tool.

<sup>a</sup> Number of crimps shown on chart must be applied to both sides of ASN splice connector's centerline.

<sup>b</sup> Dieless tools are not color coded and do not require dies.

<sup>c</sup> For ASN splicer connector, apply 2 crimps on both sides of splice connector's centerline.

<sup>d</sup> For ASN splicer connector, apply 3 crimps on both sides of splice connector's centerline.

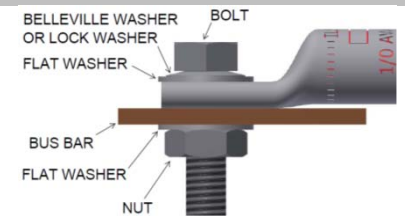
<sup>e</sup> For ASN splicer connector, apply 4 crimps on both sides of splice connector's centerline.

<sup>f</sup> ASN-1000 splicer connector is not UL listed or CSA certified with Y644M/PAT644XT dieless tools.

<sup>g</sup> 700/750 size lug/splice are additionally rated for use with 900 kcmil compact aluminum wire.

### Connector Installation

- Select proper connector for the wire size to be used. Series can be used with concentric, compressed or compact aluminum or copper wire.
- Strip wire insulation using an approved method. Do not nick or ring the wire. Remove any major coating on the wire.
- Remove surface oxides from the wire with a wire brush.
- Insert wire all the way into the barrel of the connector.
- Select the proper die for approved tool. See chart above for approved tools and dies. Compress barrel from tang toward wire, or from inside of ASN connector towards wire.
- When terminating an aluminum connector to a steel or copper stud, use a belleville or compression type washer in combination with a flat washer. Tighten until the belleville washer is flat.



## Information Sheet

### Series ALNS, ALND, ASNS, ASND, ALNB, ASNB, ALNN, ASNN, and ASN<sup>a</sup>

#### Compression Connectors for Aluminum or Copper Conductor

#### Range Taking (for ILSCO, BURNDY, GREENLEE and RIDGID Dieless Tools)

Lug/Splice Size	Standard Wire Size	Expanded Wire Range	ILSCO MT-25 <sup>b</sup>	ILSCO IVTB-6 <sup>b</sup>	ILSCO IDT-6 <sup>b</sup> , IDT-6H <sup>b</sup> , IDTB-6 <sup>b</sup> series	ILSCO IDT-12-N <sup>b</sup>	BURNDY PAT4PC834 <sup>b</sup> , PAT81KFT <sup>b</sup> , Y81KFT <sup>b</sup> , Y81KFTMBH <sup>b</sup>	BURNDY Y644M <sup>b</sup> , PAT644XT <sup>b</sup>	GREENLEE EK06FT <sup>b</sup> , HK06FT <sup>b</sup> , RK06FT <sup>b</sup>	RIDGID RE 6 <sup>b</sup>
			Crimps	Crimps	Crimps	Crimps	Crimps	Crimps	Crimps	Crimps
4	4 AWG	4 - 6 AWG	1	1	1	1	1		1	1
2	2 AWG	2 - 6 AWG	2	2	1	1	1 <sup>c</sup>		1	2
1	1 AWG	1 - 2 AWG	2	2	1	1	1 <sup>c</sup>		1	2
1/0	1/0 AWG	1/0 - 1 AWG	2	2	1	1	1 <sup>c</sup>		1	2
2/0	2/0 AWG	2/0 - 1 AWG	2	2	2	1	2		2	2
3/0	3/0 AWG	3/0 - 1 AWG	2	2	2	1	2		2	2
4/0	4/0 AWG	4/0 - 1 AWG	2	2	2	1	2		2	2
250	250 kcmil	250 kcmil - 1/0 AWG		2	2	1	2		2	2
300	300 kcmil	300 kcmil - 2/0 AWG		2	2	1	2		2	2
350	350 kcmil	350 kcmil - 3/0 AWG		2	2	1	2 <sup>d</sup>		2	2
400	400 kcmil	400 kcmil - 4/0 AWG		2	2	1	2 <sup>e</sup>		2	2
500	500 kcmil	500 kcmil - 4/0 AWG		2	2 <sup>e</sup>	1	2 <sup>e</sup>		2 <sup>e</sup>	2
600	600 kcmil	600 kcmil - 250 kcmil			2 <sup>e</sup>	1	2 <sup>e</sup>		2 <sup>e</sup>	
700/750	700/750 kcmil	750 kcmil - 500 kcmil			2 <sup>e</sup>	1	2 <sup>e</sup>		2 <sup>e</sup>	
1000	1000 kcmil	1000 kcmil - 750 kcmil						1 <sup>h</sup>		

<sup>a</sup> Number of crimps shown on chart must be applied to both sides of ASN splice connector's centerline.

<sup>b</sup> Dieless tools are not color coded and do not require dies.

<sup>c</sup> For ASN splicer connectors, apply 2 crimps on both sides of splice connector's centerline.

<sup>d</sup> For ASN splicer connectors, apply 3 crimps on both sides of splice connector's centerline.

<sup>e</sup> For ASN splicer connectors, apply 4 crimps on both sides of splice connector's centerline.

<sup>h</sup> ASN-1000 splicer connector is not UL listed or CSA certificated with Y644M/PAT644XT dieless tools.

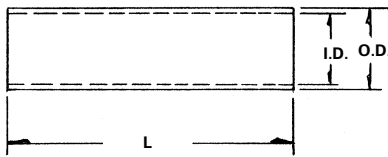
### TYPE ASN

#### Features

- Manufactured from high strength aluminum alloy
- Electro-Tin plated
- Chamfered entry
- Color coded end cap
- Roll marked
- Pre-filled with DE-OX® oxide inhibiting compound
- Range taking
- Suitable for use in circuits rated 35KV or less, proper high voltage spacing and insulation techniques must be used
- Dual rated AL9CU to 90° C

#### Benefits

- Offers maximum conductivity and excellent crimping characteristics
- Provides low contact resistance
- For easy conductor insertion
- Identifies the proper compression die
- For easy identification and proper location of crimps
- Prevents oxides from forming & promotes connector longevity
- Permits inventories to be kept to a minimum
- Application versatility
- For use with aluminum or copper conductor



Catalog Number	Wire Size	Expanded Wire Range*	Dimensions - in (mm)			Die Color Code	Die Index
			Length	O.D.	I.D.		
ASN-8	#8 AWG	8 AWG	1.806 (45.9)	0.300 (7.6)	0.155 (3.9)	Blue	374
ASN-6	#6 AWG	6 AWG	1.205 (30.6)	0.338 (8.6)	0.194 (4.9)	Gray	346
ASN-4	#4 AWG	4-6 AWG	2.222 (56.4)	0.427 (10.8)	0.247 (6.3)	Green	375
ASN-2	#2 AWG	2-6 AWG	1.940 (49.3)	0.525 (13.3)	0.307 (7.8)	Pink	348
ASN-1	#1 AWG	1-2 AWG	1.940 (49.3)	0.544 (13.8)	0.358 (9.1)	Gold	471
ASN-1/0	1/0 AWG	1/0-1 AWG	2.573 (65.4)	0.599 (15.2)	0.385 (9.8)	Tan	296
ASN-2/0	2/0 AWG	2/0-1 AWG	2.710 (68.8)	0.674 (17.1)	0.432 (11.0)	Olive	297
ASN-3/0	3/0 AWG	3/0-1 AWG	2.710 (68.8)	0.761 (19.3)	0.495 (12.6)	Olive	297
ASN-4/0	4/0 AWG	4/0-1 AWG	3.070 (78.0)	0.854 (21.7)	0.553 (14.0)	Ruby	467
ASN-250	250kcmil	250kcmil-1/0 AWG	3.735 (94.9)	0.924 (23.5)	0.595 (15.1)	Red	324
ASN-300	300kcmil	300kcmil-2/0 AWG	3.070 (78.0)	1.010 (25.7)	0.650 (16.5)	Blue	470
ASN-350	350kcmil	350kcmil-3/0 AWG	5.125 (130.2)	1.105 (28.1)	0.720 (18.3)	Brown	299
ASN-400	400kcmil	400kcmil-4/0 AWG	4.606 (117.0)	1.188 (30.2)	0.762 (19.4)	Green	472
ASN-500	500kcmil	500kcmil-4/0 AWG	5.130 (130.3)	1.315 (33.4)	0.854 (21.7)	Pink	300
ASN-600	600kcmil	600kcmil-250kcmil	5.370 (136.4)	1.440 (36.6)	0.920 (23.4)	Black	473
ASN-700/750	700/750kcmil	750kcmil-500kcmil, 900kcmil compact Al**	5.928 (150.6)	1.460 (37.1)	1.030 (26.2)	Yellow	936
ASN-1000	1000kcmil	1000kcmil-750kcmil	5.992 (152.2)	1.840 (46.7)	1.180 (30.0)	Brown	P302

For Tool and Die Information Refer to Tooling Information Page Series: ALNS, ALND, ALNN, ASN

\* When installed with specified dieless tools

\*\* UL Approved 900kcmil compact Al

Tested to UL 486A/B, UL File E6207

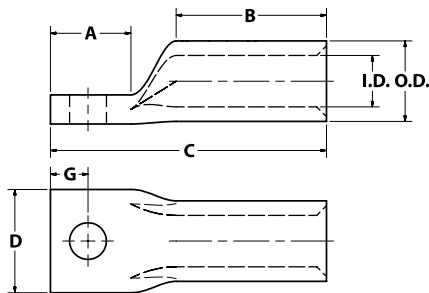
### TYPE ALNS

#### Features

- Manufactured from high strength aluminum alloy
- Electro-Tin plated
- Chamfered entry
- Color coded end cap
- Roll marked
- Pre-filled with DE-OX® oxide inhibiting compound
- Range taking
- Suitable for use in circuits rated 35KV or less, proper high voltage spacing and insulation techniques must be used
- Dual rated AL9CU to 90°C

#### Benefits

- Offers maximum conductivity and excellent crimping characteristics
- Provides low contact resistance
- For easy conductor insertion
- Identifies the proper conductor size
- For easy identification and proper location of crimps
- Prevents oxides from forming & promotes connector longevity
- Permits inventories to be kept to a minimum
- Application versatility
- For use with aluminum or copper conductor



Catalog Number	Wire Size	Expanded Wire Range*	Bolt Size	Stud Hole Dia.	Dimensions - in (mm)						Die Color Code	Die Index	
					A	B	C	D	G	O.D.			I.D.
ALNS-250-38	250kcmil	250kcmil-1/0 AWG	3/8	0.406 (10.3)	0.875 (22.2)	1.535 (39.0)	3.200 (81.3)	1.264 (32.1)	0.414 (10.5)	0.924 (23.5)	0.595 (15.1)	Red	324
ALNS-250-12	250kcmil	250kcmil-1/0 AWG	1/2	0.562 (14.3)	0.875 (22.2)	1.535 (39.0)	3.316 (84.2)	1.264 (32.1)	0.546 (13.9)	0.924 (23.5)	0.595 (15.1)	Red	324
ALNS-300-38	300kcmil	300kcmil-2/0 AWG	3/8	0.406 (10.3)	0.905 (23.0)	1.535 (39.0)	3.296 (83.7)	1.381 (35.1)	0.414 (10.5)	1.010 (25.7)	0.650 (16.5)	Blue	470
ALNS-300-12	300kcmil	300kcmil-2/0 AWG	1/2	0.562 (14.3)	1.295 (32.9)	1.535 (39.0)	3.690 (93.7)	1.381 (35.1)	0.546 (13.9)	1.010 (25.7)	0.650 (16.5)	Blue	470
ALNS-350-12	350kcmil	350kcmil-3/0 AWG	1/2	0.562 (14.3)	1.280 (32.5)	2.353 (59.8)	4.310 (109.5)	1.516 (38.5)	0.546 (13.9)	1.105 (28.1)	0.720 (18.3)	Brown	299
ALNS-400-12	400kcmil	400kcmil-4/0 AWG	1/2	0.562 (14.3)	1.302 (33.1)	2.303 (58.5)	4.250 (108.0)	1.623 (41.2)	0.546 (13.9)	1.188 (30.2)	0.762 (19.4)	Green	472
ALNS-400-58	400kcmil	400kcmil-4/0 AWG	5/8	0.656 (16.7)	1.485 (37.7)	2.303 (58.5)	4.420 (112.3)	1.623 (41.2)	0.671 (17.0)	1.188 (30.2)	0.762 (19.4)	Green	472
ALNS-500-12	500kcmil	500kcmil-4/0 AWG	1/2	0.562 (14.3)	1.303 (33.1)	2.565 (65.2)	4.745 (120.5)	1.802 (45.8)	0.546 (13.9)	1.315 (33.4)	0.854 (21.7)	Pink	300
ALNS-500-58	500kcmil	500kcmil-4/0 AWG	5/8	0.656 (16.7)	1.500 (38.1)	2.565 (65.2)	4.930 (125.2)	1.802 (45.8)	0.671 (17.0)	1.315 (33.4)	0.854 (21.7)	Pink	300
ALNS-600-12	600kcmil	600kcmil-250kcmil	1/2	0.562 (14.3)	1.372 (34.8)	2.685 (68.2)	5.250 (133.4)	1.965 (49.9)	0.671 (17.0)	1.440 (36.6)	0.920 (23.4)	Black	473
ALNS-600-58	600kcmil	600kcmil-250kcmil	5/8	0.656 (16.7)	1.528 (38.8)	2.685 (68.2)	5.350 (135.9)	1.965 (49.9)	0.671 (17.0)	1.440 (36.6)	0.920 (23.4)	Black	473
ALNS-700/750-12	700/750kcmil	750kcmil-500kcmil, 900kcmil compact Al**	1/2	0.562 (14.3)	1.380 (35.1)	2.964 (75.3)	5.492 (139.5)	2.048 (52.0)	0.546 (13.9)	1.460 (37.1)	1.030 (26.2)	Yellow	936
ALNS-700/750-58	700/750kcmil	750kcmil-500kcmil, 900kcmil compact Al**	5/8	0.656 (16.7)	1.421 (36.1)	2.964 (75.3)	5.505 (139.8)	2.048 (52.0)	0.671 (17.0)	1.460 (37.1)	1.030 (26.2)	Yellow	936
ALNS-1000-12	1000kcmil	1000kcmil-750kcmil	1/2	0.562 (14.3)	1.461 (37.1)	2.996 (76.1)	6.100 (154.9)	2.514 (63.9)	0.811 (20.6)	1.840 (46.7)	1.180 (30.0)	Brown	P302
ALNS-1000-58	1000kcmil	1000kcmil-750kcmil	5/8	0.656 (16.7)	1.800 (45.7)	2.996 (76.1)	6.350 (161.3)	2.514 (63.9)	0.671 (17.0)	1.840 (46.7)	1.180 (30.0)	Brown	P302

For Tool and Die Information Refer to Tooling Information Page Series: ALNS, ALND, ALNN, ASN

\* When installed with specified dieless tools

\*\* UL Approved 900kcmil compact Al

Tested to UL 486A/B, UL File E6207

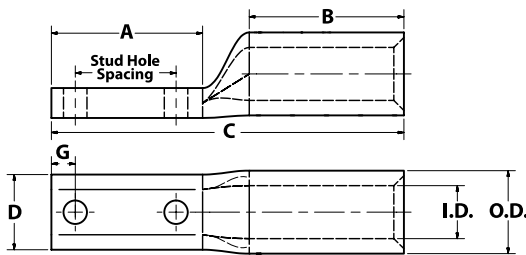
## TYPE ALNN

### Features

- Manufactured from high strength aluminum alloy
- Electro-Tin plated
- Chamfered entry
- Color coded end cap
- Roll marked
- Two bolt hole pattern
- Pre-filled with DE-OX® oxide inhibiting compound
- Range taking
- Narrow Tang
- Suitable for use in circuits rated 35KV or less, proper high voltage spacing and insulation techniques must be used
- Dual rated AL9CU to 90° C

### Benefits

- Offers maximum conductivity and excellent crimping characteristics
- Provides low contact resistance
- For easy conductor insertion
- Identifies the proper compression die
- For easy identification and proper location of crimps
- Provides maximum surface contact, secure attachment, and stabilization
- Prevents oxides from forming
- Permits inventories to be kept to a minimum
- Side by side mounting
- Application versatility
- For use with copper or aluminum conductor



Catalog Number	Wire Size	Expanded Wire Range*	Bolt Size	Stud Hole Dia.	Stud Hole Spacing	Dimensions - in (mm)						Die Color Code	Die Index	
						A	B	C	D	G	O.D.			I.D.
ALNN-350-38-1	350kcmil	350kcmil-3/0 AWG	3/8	0.406 (10.3)	1.000 (25.4)	1.937 (49.2)	2.353 (59.8)	4.913 (124.8)	1.075 (27.3)	0.414 (10.5)	1.105 (28.1)	0.720 (18.3)	Brown	299
ALNN-350-38-134	350kcmil	350kcmil-3/0 AWG	3/8	0.406 (10.3)	1.750 (44.5)	2.625 (66.7)	2.353 (59.8)	5.601 (142.3)	1.075 (27.3)	0.414 (10.5)	1.105 (28.1)	0.720 (18.3)	Brown	299
ALNN-350-12-1	350kcmil	350kcmil-3/0 AWG	1/2	0.562 (14.3)	1.000 (25.4)	2.125 (54.0)	2.353 (59.8)	5.101 (129.6)	1.075 (27.3)	0.546 (13.9)	1.105 (28.1)	0.720 (18.3)	Brown	299
ALNN-350-12-134	350kcmil	350kcmil-3/0 AWG	1/2	0.562 (14.3)	1.750 (44.5)	3.000 (76.2)	2.353 (59.8)	5.976 (151.8)	1.075 (27.3)	0.546 (13.9)	1.105 (28.1)	0.720 (18.3)	Brown	299
ALNN-400-38-1	400kcmil	400kcmil-4/0 AWG	3/8	0.406 (10.3)	1.000 (25.4)	1.937 (49.2)	2.303 (58.5)	4.907 (124.6)	1.158 (29.4)	0.414 (10.5)	1.188 (30.2)	0.762 (19.4)	Green	472
ALNN-400-38-134	400kcmil	400kcmil-4/0 AWG	3/8	0.406 (10.3)	1.750 (44.5)	2.625 (66.7)	2.303 (58.5)	5.595 (142.1)	1.158 (29.4)	0.414 (10.5)	1.188 (30.2)	0.762 (19.4)	Green	472
ALNN-400-12-1	400kcmil	400kcmil-4/0 AWG	1/2	0.562 (14.3)	1.000 (25.4)	2.125 (54.0)	2.303 (58.5)	5.095 (129.4)	1.158 (29.4)	0.546 (13.9)	1.188 (30.2)	0.762 (19.4)	Green	472
ALNN-400-12-134	400kcmil	400kcmil-4/0 AWG	1/2	0.562 (14.3)	1.750 (44.5)	3.000 (76.2)	2.303 (58.5)	5.970 (151.6)	1.158 (29.4)	0.546 (13.9)	1.188 (30.2)	0.762 (19.4)	Green	472
ALNN-500-38-1	500kcmil	500kcmil-4/0 AWG	3/8	0.406 (10.3)	1.000 (25.4)	1.937 (49.2)	2.565 (65.2)	5.234 (132.9)	1.285 (32.6)	0.414 (10.5)	1.315 (33.4)	0.854 (21.7)	Pink	300
ALNN-500-38-134	500kcmil	500kcmil-4/0 AWG	3/8	0.406 (10.3)	1.750 (44.5)	2.625 (66.7)	2.565 (65.2)	5.922 (150.4)	1.285 (32.6)	0.414 (10.5)	1.315 (33.4)	0.854 (21.7)	Pink	300
ALNN-500-12-1	500kcmil	500kcmil-4/0 AWG	1/2	0.562 (14.3)	1.000 (25.4)	2.125 (54.0)	2.565 (65.2)	5.422 (137.7)	1.285 (32.6)	0.546 (13.9)	1.315 (33.4)	0.854 (21.7)	Pink	300
ALNN-500-12-134	500kcmil	500kcmil-4/0 AWG	1/2	0.562 (14.3)	1.750 (44.5)	3.000 (76.2)	2.565 (65.2)	6.297 (159.9)	1.285 (32.6)	0.546 (13.9)	1.315 (33.4)	0.854 (21.7)	Pink	300
ALNN-600-38-1	600kcmil	600kcmil-250kcmil	3/8	0.406 (10.3)	1.000 (25.4)	1.937 (49.2)	2.685 (68.2)	5.431 (137.9)	1.410 (35.8)	0.414 (10.5)	1.440 (36.6)	0.920 (23.4)	Black	473
ALNN-600-38-134	600kcmil	600kcmil-250kcmil	3/8	0.406 (10.3)	1.750 (44.5)	2.625 (66.7)	2.685 (68.2)	6.119 (155.4)	1.410 (35.8)	0.414 (10.5)	1.440 (36.6)	0.920 (23.4)	Black	473
ALNN-600-12-1	600kcmil	600kcmil-250kcmil	1/2	0.562 (14.3)	1.000 (25.4)	2.125 (54.0)	2.685 (68.2)	5.619 (142.7)	1.410 (35.8)	0.546 (13.9)	1.440 (36.6)	0.920 (23.4)	Black	473
ALNN-600-12-134	600kcmil	600kcmil-250kcmil	1/2	0.562 (14.3)	1.750 (44.5)	3.000 (76.2)	2.685 (68.2)	6.494 (164.9)	1.410 (35.8)	0.546 (13.9)	1.440 (36.6)	0.920 (23.4)	Black	473
ALNN-700/750-38-1	700/750kcmil	750kcmil-500kcmil, 900kcmil compact Al**	3/8	0.406 (10.3)	1.000 (25.4)	1.937 (49.2)	2.964 (75.3)	5.803 (147.4)	1.430 (36.3)	0.414 (10.5)	1.460 (37.1)	1.030 (26.2)	Yellow	936
ALNN-700/750-38-134	700/750kcmil	750kcmil-500kcmil, 900kcmil compact Al**	3/8	0.406 (10.3)	1.750 (44.5)	2.625 (66.7)	2.964 (75.3)	6.491 (164.9)	1.430 (36.3)	0.414 (10.5)	1.460 (37.1)	1.030 (26.2)	Yellow	936
ALNN-700/750-12-1	700/750kcmil	750kcmil-500kcmil, 900kcmil compact Al**	1/2	0.562 (14.3)	1.000 (25.4)	2.125 (54.0)	2.964 (75.3)	5.991 (152.2)	1.430 (36.3)	0.546 (13.9)	1.460 (37.1)	1.030 (26.2)	Yellow	936
ALNN-700/750-12-134	700/750kcmil	750kcmil-500kcmil, 900kcmil compact Al**	1/2	0.562 (14.3)	1.750 (44.5)	3.000 (76.2)	2.964 (75.3)	6.866 (174.4)	1.430 (36.3)	0.546 (13.9)	1.460 (37.1)	1.030 (26.2)	Yellow	936
ALNN-1000-38-1	1000kcmil	1000kcmil-750kcmil	3/8	0.406 (10.3)	1.000 (25.4)	1.937 (49.2)	2.996 (76.1)	5.958 (151.3)	1.578 (40.1)	0.414 (10.5)	1.840 (46.7)	1.180 (30.0)	Brown	P302
ALNN-1000-38-134	1000kcmil	1000kcmil-750kcmil	3/8	0.406 (10.3)	1.750 (44.5)	2.625 (66.7)	2.996 (76.1)	6.646 (168.8)	1.578 (40.1)	0.414 (10.5)	1.840 (46.7)	1.180 (30.0)	Brown	P302
ALNN-1000-12-1	1000kcmil	1000kcmil-750kcmil	1/2	0.562 (14.3)	1.000 (25.4)	2.125 (54.0)	2.996 (76.1)	6.146 (156.1)	1.578 (40.1)	0.546 (13.9)	1.840 (46.7)	1.180 (30.0)	Brown	P302
ALNN-1000-12-134	1000kcmil	1000kcmil-750kcmil	1/2	0.562 (14.3)	1.750 (44.5)	3.000 (76.2)	2.996 (76.1)	7.021 (178.3)	1.578 (40.1)	0.546 (13.9)	1.840 (46.7)	1.180 (30.0)	Brown	P302

For Tool and Die Information Refer to Tooling Information Page Series: ALNS, ALND, ALNN, ASN

\* When installed with specified dieless tools

\*\* UL Approved 900kcmil compact Al

Tested to UL 486A/B, UL File E6207

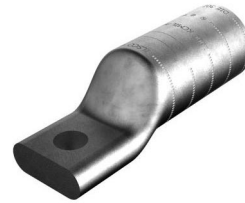
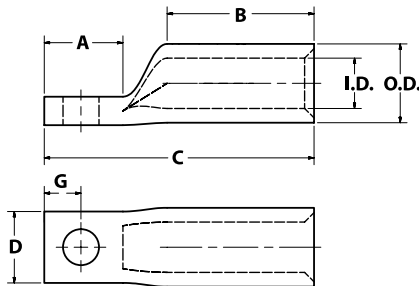
## TYPE ALNN

### Features

- Manufactured from high strength aluminum alloy
- Electro-Tin plated
- Chamfered entry
- Color coded end cap
- Roll marked
- Pre-filled with DE-OX® oxide inhibiting compound
- Range taking
- Narrow Tang
- Suitable for use in circuits rated 35KV or less, proper high voltage spacing and insulation techniques must be used
- Dual rated AL9CU to 90° C

### Benefits

- Offers maximum conductivity and excellent crimping characteristics
- Provides low contact resistance
- For easy conductor insertion
- Identifies the proper compression die
- For easy identification and proper location of crimps
- Prevents oxides from forming
- Permits inventories to be kept to a minimum
- Side by side mounting
- Application versatility
- For use with copper or aluminum conductor



Catalog Number	Wire Size	Expanded Wire Range*	Bolt Size	Stud Hole Dia.	Dimensions - in (mm)							Die Color Code	Die Index
					A	B	C	D	G	O.D.	I.D.		
ALNN-4-14	#4 AWG	4-6 AWG	1/4	0.281 (7.1)	0.875 (22.2)	0.920 (23.4)	2.029 (51.5)	0.412 (10.5)	0.321 (8.2)	0.427 (10.8)	0.247 (6.3)	Green	375
ALNN-2-14	#2 AWG	2-6 AWG	1/4	0.281 (7.1)	0.875 (22.2)	0.970 (24.6)	2.131 (54.1)	0.495 (12.6)	0.321 (8.2)	0.525 (13.3)	0.307 (7.8)	Pink	348
ALNN-1-14	#1 AWG	1-2 AWG	1/4	0.281 (7.1)	1.687 (42.8)	0.970 (24.6)	2.175 (55.2)	0.514 (13.1)	0.321 (8.2)	0.544 (13.8)	0.358 (9.1)	Gold	471
ALNN-1-516	#1 AWG	1-2 AWG	5/16	0.343 (8.7)	0.875 (22.2)	0.970 (24.6)	2.175 (55.2)	0.514 (13.1)	0.353 (9.0)	0.544 (13.8)	0.358 (9.1)	Gold	471
ALNN-1/0-516	#1/0 AWG	1/0-1 AWG	5/16	0.343 (8.7)	0.875 (22.2)	1.070 (27.2)	2.301 (58.4)	0.569 (14.5)	0.353 (9.0)	0.599 (15.2)	0.385 (9.8)	Tan	296
ALNN-2/0-38	#2/0 AWG	2/0-1 AWG	3/8	0.406 (10.3)	0.875 (22.2)	1.355 (34.4)	2.626 (66.7)	0.644 (16.4)	0.414 (10.5)	0.674 (17.1)	0.432 (11.0)	Olive	297
ALNN-3/0-38	#3/0 AWG	3/0-1 AWG	3/8	0.406 (10.3)	0.875 (22.2)	1.355 (34.4)	2.669 (67.8)	0.731 (18.6)	0.414 (10.5)	0.761 (19.3)	0.495 (12.6)	Ruby	467
ALNN-3/0-12	#3/0 AWG	3/0-1 AWG	1/2	0.562 (14.3)	1.250 (31.8)	1.355 (34.4)	3.044 (77.3)	0.731 (18.6)	0.546 (13.9)	0.761 (19.3)	0.495 (12.6)	Ruby	467
ALNN-4/0-38	#4/0 AWG	4/0-1 AWG	3/8	0.406 (10.3)	0.875 (22.2)	1.535 (39.0)	2.901 (73.7)	0.824 (20.9)	0.414 (10.5)	0.854 (21.7)	0.553 (14.0)	White	298
ALNN-4/0-12	#4/0 AWG	4/0-1 AWG	1/2	0.562 (14.3)	1.250 (31.8)	1.535 (39.0)	3.276 (83.2)	0.824 (20.9)	0.546 (13.9)	0.854 (21.7)	0.553 (14.0)	White	298
ALNN-250-38	250kcmil	250kcmil-1/0 AWG	3/8	0.406 (10.3)	0.875 (22.2)	1.535 (39.0)	2.941 (74.7)	0.894 (22.7)	0.414 (10.5)	0.924 (23.5)	0.595 (15.1)	Red	324
ALNN-250-12	250kcmil	250kcmil-1/0 AWG	1/2	0.562 (14.3)	1.250 (31.8)	1.535 (39.0)	3.316 (84.2)	0.894 (22.7)	0.546 (13.9)	0.924 (23.5)	0.595 (15.1)	Red	324
ALNN-300-38	300kcmil	300kcmil-2/0 AWG	3/8	0.406 (10.3)	0.875 (22.2)	1.535 (39.0)	2.997 (76.1)	0.980 (24.9)	0.414 (10.5)	1.010 (25.7)	0.650 (16.5)	Blue	470
ALNN-300-12	300kcmil	300kcmil-2/0 AWG	1/2	0.562 (14.3)	1.250 (31.8)	1.535 (39.0)	3.372 (85.6)	0.980 (24.9)	0.546 (13.9)	1.010 (25.7)	0.650 (16.5)	Blue	470
ALNN-350-12	350kcmil	350kcmil-3/0 AWG	1/2	0.562 (14.3)	1.250 (31.8)	2.353 (59.8)	4.226 (107.3)	1.075 (27.3)	0.546 (13.9)	1.105 (28.1)	0.720 (18.3)	Brown	299
ALNN-400-12	400kcmil	400kcmil-4/0 AWG	1/2	0.562 (14.3)	1.250 (31.8)	2.303 (58.5)	4.220 (107.2)	1.158 (29.4)	0.546 (13.9)	1.188 (30.2)	0.762 (19.4)	Green	472
ALNN-400-58	400kcmil	400kcmil-4/0 AWG	5/8	0.656 (16.7)	1.437 (36.5)	2.303 (58.5)	4.407 (111.9)	1.158 (29.4)	0.671 (17.0)	1.188 (30.2)	0.762 (19.4)	Green	472
ALNN-500-12	500kcmil	500kcmil-5/0 AWG	1/2	0.562 (14.3)	1.250 (31.8)	2.565 (65.2)	4.547 (115.5)	1.285 (32.6)	0.546 (13.9)	1.315 (33.4)	0.854 (21.7)	Pink	300
ALNN-500-58	500kcmil	500kcmil-5/0 AWG	5/8	0.656 (16.7)	1.437 (36.5)	2.565 (65.2)	4.734 (120.2)	1.285 (32.6)	0.671 (17.0)	1.315 (33.4)	0.854 (21.7)	Pink	300
ALNN-600-12	600kcmil	600kcmil-250kcmil	1/2	0.562 (14.3)	1.250 (31.8)	2.685 (68.2)	4.744 (120.5)	1.410 (35.8)	0.546 (13.9)	1.440 (36.6)	0.920 (23.4)	Black	473
ALNN-600-58	600kcmil	600kcmil-250kcmil	5/8	0.656 (16.7)	1.437 (36.5)	2.685 (68.2)	4.931 (125.2)	1.410 (35.8)	0.671 (17.0)	1.440 (36.6)	0.920 (23.4)	Black	473
ALNN-700/750-12	700/750kcmil	750kcmil-500kcmil, 900kcmil compact Al**	1/2	0.562 (14.3)	1.250 (31.8)	2.964 (75.3)	5.116 (129.9)	1.430 (36.3)	0.546 (13.9)	1.460 (37.1)	1.030 (26.2)	Yellow	936
ALNN-700/750-58	700/750kcmil	750kcmil-500kcmil, 900kcmil compact Al**	5/8	0.656 (16.7)	1.437 (36.5)	2.964 (75.3)	5.303 (134.7)	1.430 (36.3)	0.671 (17.0)	1.460 (37.1)	1.030 (26.2)	Yellow	936
ALNN-1000-12	1000kcmil	1000kcmil-750kcmil	1/2	0.562 (14.3)	1.250 (31.8)	2.996 (76.1)	5.271 (133.9)	1.578 (40.1)	0.546 (13.9)	1.840 (46.7)	1.180 (30.0)	Brown	P302
ALNN-1000-58	1000kcmil	1000kcmil-750kcmil	5/8	0.656 (16.7)	1.437 (36.5)	2.996 (76.1)	5.458 (138.6)	1.578 (40.1)	0.671 (17.0)	1.840 (46.7)	1.180 (30.0)	Brown	P302

For Tool and Die Information Refer to Tooling Information Page Series: ALNS, ALND, ALNN, ASN

\* When installed with specified dieless tools

\*\* UL Approved 900kcmil compact Al

Tested to UL 486A/B, UL File E6207

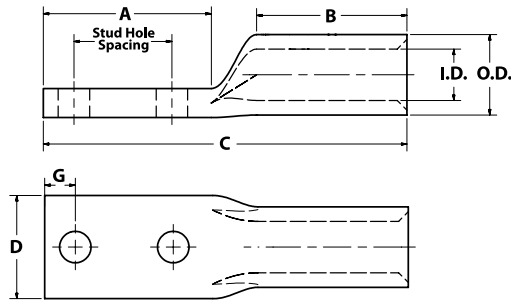
## TYPE ALND

### Features

- Manufactured from high strength aluminum alloy
- Electro-Tin plated
- Chamfered entry
- Color coded end cap
- Roll marked
- Two bolt hole pattern
- Pre-filled with DE-OX® oxide inhibiting compound
- Range taking
- Suitable for use in circuits rated 35KV or less, proper high voltage spacing and insulation techniques must be used
- Dual rated AL9CU to 90° C

### Benefits

- Offers maximum conductivity and excellent crimping characteristics
- Provides low contact resistance
- For easy conductor insertion
- Identifies the proper compression die
- For easy identification and proper location of crimps
- Provides maximum surface contact, secure attachment, and stabilization
- Prevents oxides from forming & promotes connector longevity
- Permits inventories to be kept to a minimum
- Application versatility
- For use with aluminum or copper conductor



Catalog Number	Wire Size	Expanded Wire Range*	Bolt Size	Stud Hole Dia.	Stud Hole Spacing	Dimensions - in (mm)							Die Color Code	Die Index
						A	B	C	D	G	O.D.	I.D.		
ALND-600-38-1	600kcmil	600kcmil-250kcmil	3/8	0.406 (10.3)	1.000 (25.4)	2.128 (54.1)	2.685 (68.2)	5.975 (151.8)	1.965 (49.9)	0.593 (15.1)	1.440 (36.6)	0.920 (23.4)	Black	473
ALND-600-38-134	600kcmil	600kcmil-250kcmil	3/8	0.406 (10.3)	1.750 (44.5)	2.796 (71.0)	2.685 (68.2)	6.660 (169.2)	1.965 (49.9)	0.593 (15.1)	1.440 (36.6)	0.920 (23.4)	Black	473
ALND-600-12-1	600kcmil	600kcmil-250kcmil	1/2	0.562 (14.3)	1.000 (25.4)	2.262 (57.5)	2.685 (68.2)	6.130 (155.7)	1.965 (49.9)	0.671 (17.0)	1.440 (36.6)	0.920 (23.4)	Black	473
ALND-600-12-134	600kcmil	600kcmil-250kcmil	1/2	0.562 (14.3)	1.750 (44.5)	3.150 (80.0)	2.685 (68.2)	6.973 (177.1)	1.965 (49.9)	0.546 (13.9)	1.440 (36.6)	0.920 (23.4)	Black	473
ALND-700/750-38-1	700/750kcmil	750kcmil-500kcmil, 900kcmil compact Al**	3/8	0.406 (10.3)	1.000 (25.4)	2.121 (53.9)	2.964 (75.3)	6.220 (158.0)	2.048 (52.0)	0.623 (15.8)	1.460 (37.1)	1.030 (26.2)	Yellow	936
ALND-700/750-38-134	700/750kcmil	750kcmil-500kcmil, 900kcmil compact Al**	3/8	0.406 (10.3)	1.750 (44.5)	2.812 (71.4)	2.964 (75.3)	6.900 (175.3)	2.048 (52.0)	0.623 (15.8)	1.460 (37.1)	1.030 (26.2)	Yellow	936
ALND-700/750-12-1	700/750kcmil	750kcmil-500kcmil, 900kcmil compact Al**	1/2	0.562 (14.3)	1.000 (25.4)	2.298 (58.4)	2.964 (75.3)	6.400 (162.6)	2.048 (52.0)	0.701 (17.8)	1.460 (37.1)	1.030 (26.2)	Yellow	936
ALND-700/750-12-134	700/750kcmil	750kcmil-500kcmil, 900kcmil compact Al**	1/2	0.562 (14.3)	1.750 (44.5)	3.162 (80.3)	2.964 (75.3)	7.062 (179.4)	2.048 (52.0)	0.546 (13.9)	1.460 (37.1)	1.030 (26.2)	Yellow	936
ALND-1000-38-1	1000kcmil	1000kcmil-750kcmil	3/8	0.406 (10.3)	1.000 (25.4)	2.249 (57.1)	2.996 (76.1)	6.840 (173.8)	2.514 (63.9)	0.733 (18.6)	1.840 (46.7)	1.180 (30.0)	Brown	P302
ALND-1000-38-134	1000kcmil	1000kcmil-750kcmil	3/8	0.406 (10.3)	1.750 (44.5)	2.947 (74.9)	2.996 (76.1)	7.530 (191.3)	2.514 (63.9)	0.733 (18.6)	1.840 (46.7)	1.180 (30.0)	Brown	P302
ALND-1000-12-1	1000kcmil	1000kcmil-750kcmil	1/2	0.562 (14.3)	1.000 (25.4)	2.125 (54.0)	2.996 (76.1)	6.806 (172.9)	2.514 (63.9)	0.811 (20.6)	1.840 (46.7)	1.180 (30.0)	Brown	P302
ALND-1000-12-134	1000kcmil	1000kcmil-750kcmil	1/2	0.562 (14.3)	1.750 (44.5)	3.231 (82.1)	2.996 (76.1)	7.795 (198.0)	2.514 (63.9)	0.546 (13.9)	1.840 (46.7)	1.180 (30.0)	Brown	P302

For Tool and Die Information Refer to Tooling Information Page Series: ALNS, ALND, ALNN, ASN

\* When installed with specified dieless tools

\*\* UL Approved 900kcmil compact Al

Tested to UL 486A/B, UL File E6207



4730 Madison Road  
Cincinnati, OH 45227  
ilsco.com

August 19, 2015.

Subject: 700/750 kcmil Aluminum Compression Connectors

To whom it may concern:

ILSCO's 700/750 kcmil aluminum compression connectors are UL486A/B listed. The wire range of these connectors is 750 kcmil – 500 kcmil. In addition, the 700/750 kcmil aluminum compression connectors are also rated for use with 900 kcmil compact aluminum wire when installed using UL authorized tools as specified in the provided information sheet (Form 196).

Please feel free to contact me if there are any further questions.

Sincerely,

*Tonson Tong*

Tonson Tong  
Compliance Engineer  
ILSCO Corporation  
513-979-6105  
ttong@ilsco.com