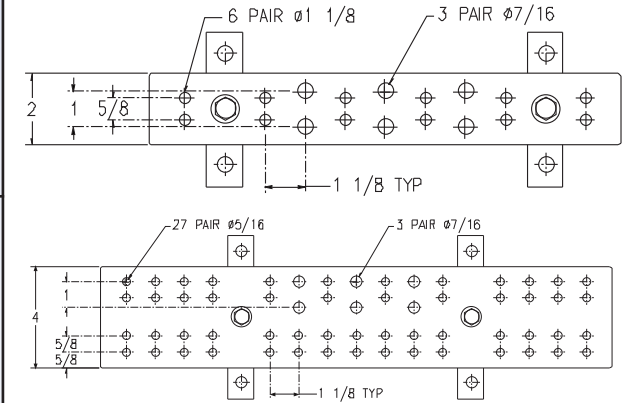


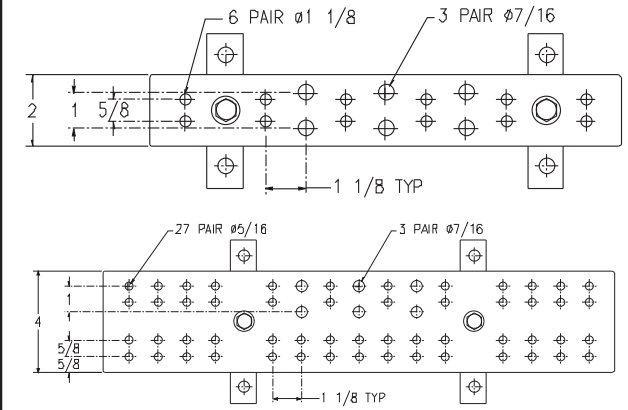
## Tinned Plated Telecom System Grounding Bus Bars

BOLT PATTERN	NO. & SIZE OF HOLES*	GROUNDING BUS BAR DESCRIPTION	LENGTH	PART #	MAX ORDER QTY
TGB	6 pair - 5/16" 3 pair - 7/16"	2" x 1/4" Tinned Cu	12"	TGBA14L06PT	4
EIA/TIA	8 pair - 5/16" 3 pair - 7/16"	2" x 1/4" Tinned Cu	15-1/2"	TGBA16L08PT	4
Standard	10 pair - 5/16" 3 pair - 7/16"	2" x 1/4" Tinned Cu	17-3/4"	TGBA18L10PT	4
	12 pair - 5/16" 3 pair - 7/16"	2" x 1/4" Tinned Cu	20"	TGBA20L12PT	4
	14 pair - 5/16" 5 pair - 7/16"	2" x 1/4" Tinned Cu	24"	TGBA25L14PT	4
	18 pair - 5/16" 5 pair - 7/16"	2" x 1/4" Tinned Cu	29"	TGBA29L18PT	4
TMGB	15 pair - 5/16" 3 pair - 7/16"	4" x 1/4" Tinned Cu	12"	TMGBA14L15PT	4
EIA/TIA	19 pair - 5/16" 3 pair - 7/16"	4" x 1/4" Tinned Cu	15-1/2"	TMGBA16L19PT	4
Standard	23 pair - 5/16" 3 pair - 7/16"	4" x 1/4" Tinned Cu	17-3/4"	TMGBA18L23PT	4
	27 pair - 5/16" 3 pair - 7/16"	4" x 1/4" Tinned Cu	20"	TMGBA20L27PT	4
	33 pair - 5/16" 5 pair - 7/16"	4" x 1/4" Tinned Cu	24"	TMGBA25L33PT	4
	41 pair - 5/16" 5 pair - 7/16"	4" x 1/4" Tinned Cu	29"	TMGBA29L41PT	4



## Untinned Plated Telecom System Grounding Bus Bars

BOLT PATTERN	NO. & SIZE OF HOLES*	GROUNDING BUS BAR DESCRIPTION	LENGTH	PART #	MAX ORDER QTY
TGB	6 pair - 5/16" 3 pair - 7/16"	2" x 1/4" Cu	12"	TGBA14L06P	2
EIA/TIA	8 pair - 5/16" 3 pair - 7/16"	2" x 1/4" Cu	15-1/2"	TGBA16L08P	2
Standard	10 pair - 5/16" 3 pair - 7/16"	2" x 1/4" Cu	17-3/4"	TGBA18L10P	2
	12 pair - 5/16" 3 pair - 7/16"	2" x 1/4" Cu	20"	TGBA20L12P	2
	14 pair - 5/16" 5 pair - 7/16"	2" x 1/4" Cu	24"	TGBA25L14P	2
	18 pair - 5/16" 5 pair - 7/16"	2" x 1/4" Cu	29"	TGBA29L18P	2
TMGB	15 pair - 5/16" 3 pair - 7/16"	4" x 1/4" Cu	12"	TMGBA14L15P	2
EIA/TIA	19 pair - 5/16" 3 pair - 7/16"	4" x 1/4" Cu	15-1/2"	TMGBA16L19P	2
Standard	23 pair - 5/16" 3 pair - 7/16"	4" x 1/4" Cu	17-3/4"	TMGBA18L23P	2
	27 pair - 5/16" 3 pair - 7/16"	4" x 1/4" Cu	20"	TMGBA20L27P	2
	33 pair - 5/16" 3 pair - 7/16"	4" x 1/4" Cu	24"	TMGBA25L33P	2
	41 pair - 5/16" 3 pair - 7/16"	4" x 1/4" Cu	29"	TMGBA29L41P	2



## CADWELD® Molds to Attach Ground Pigtails

CABLE SIZE	BUS BAR THICKNESS	IN-STOCK MOLD PART #	WELD METAL
2 SOL	1/4"	LJCEG1T	65
4/0 STR	1/4"	LJCEG2Q	90

All molds require L160 handle clamp



Phone: 800-677-9089  
 Fax: 800-677-8131  
[www.erico.com](http://www.erico.com)

**WARNING**  
 ERICO products shall be installed and used only as indicated in ERICO's product instruction sheets and training materials. Instruction sheets are available at [www.erico.com](http://www.erico.com) and from your ERICO customer service representative. Improper installation, misuse, misapplication or other failure to completely follow ERICO's instructions and warnings may cause product malfunction, property damage, serious bodily injury and death.

Copyright ©2007 ERICO International Corporation. All rights reserved.  
 CADDY, CADWELD, CRITEC, ERICO, ERIFLEX, ERITECH, and LENTON are registered trademarks of ERICO International Corporation.



# Equipotential Bonding

## Equipment Ground Bars

Proper bonding is essential to create an equipotential plane between service grounds and equipment during fault and transient conditions. This equipotential plane provides a near zero voltage differential and serves to protect people and equipment during these events. The most popular bonding product in use today is the ground bar or bonding bar. Ground bars provide a convenient, single-point grounding and bonding location. Conductors are welded to the bar using the CADWELD® process or are mechanically fastened by using lugs.

ERICO® can design and manufacture custom bars. In addition, the breadth of the product offering includes TMGB bars, which meet the requirements of TIA/EIA 607 and conform to BICSI recommendations. Our perimeter bus system allows for fast and easy field installation of halo and other perimeter grounding schemes.

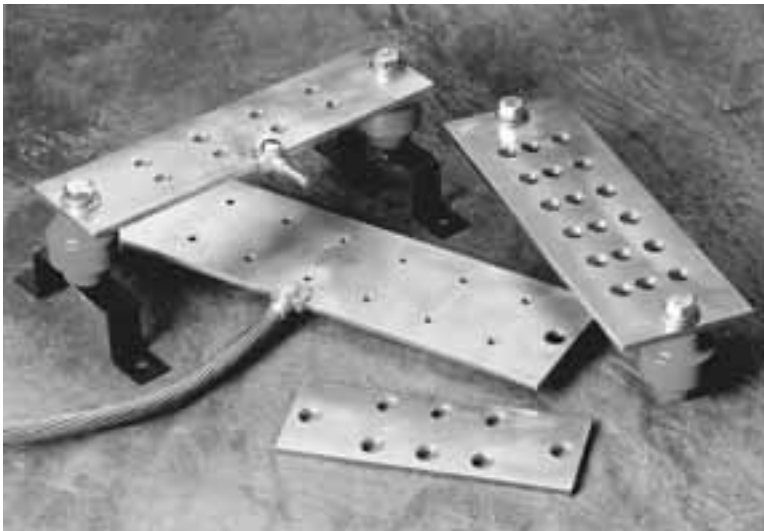


Figure 28.

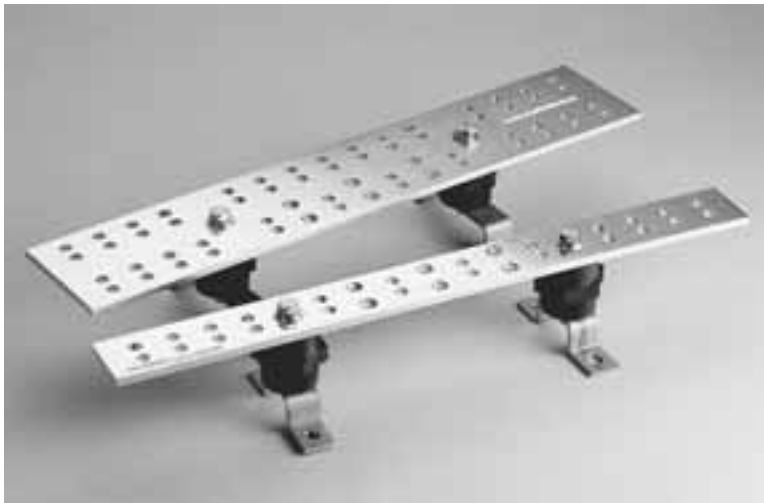


Figure 29.

### ERITECH® EGB Series

#### Materials

##### Busbars

- 1/4" thick copper
- ASTM B187-C11000
- Electro-tin plated (if required)

##### Insulators:

- Material: flame resistant fiberglass reinforced thermoset polyester
- Color: red
- Indoor rating: 600 volts
- 1-1/2" height

##### Brackets:

- Type 304 stainless steel
- 1/8" thick

##### Fasteners:

- 3/8" Type 304 stainless steel fasteners and stainless steel brackets

### ERITECH TGB & TMGB

#### Materials

##### Busbars:

- 1/4" thick copper
- ASTM B187-C11000
- Electro-tin plated

##### Insulators:

- Manufactured of rugged polyamide, an environmentally friendly, halogen-free nylon material which is reinforced with glass fiber
- 2" standoff height
- Meets the requirements of UL94 VO for self-extinguishing materials

##### Brackets:

- Type 304 stainless steel
- 1/8" thick

##### Fasteners:

- Type 304 stainless steel

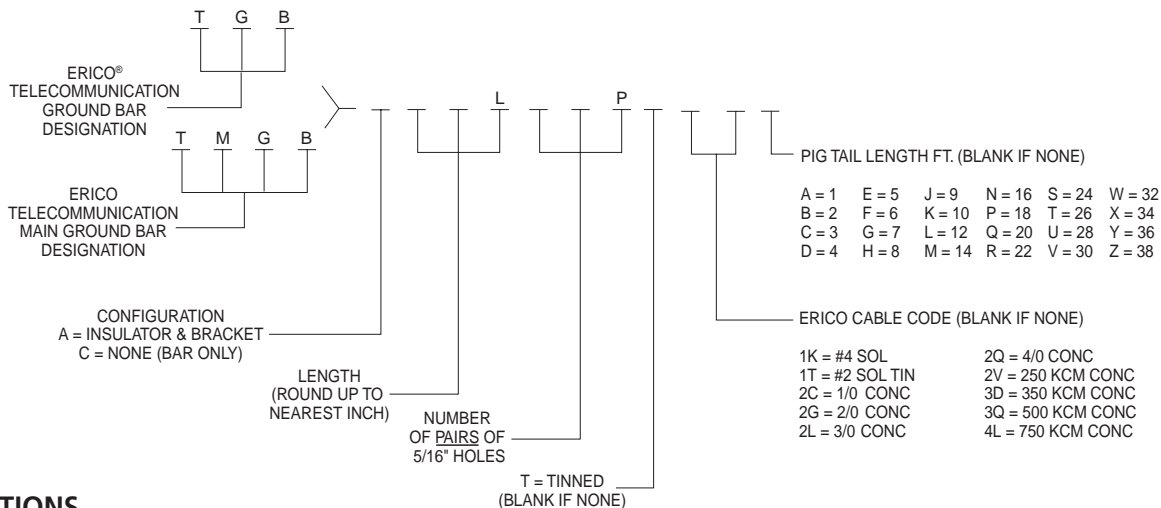
# Equipotential Bonding

## Equipment Ground Bars

ERITECH® TGB & TMGB Series



### PART NUMBERING SYSTEM



### SPECIFICATIONS

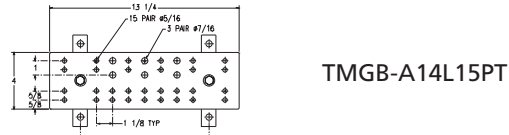
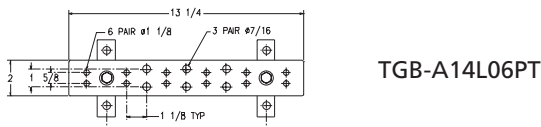
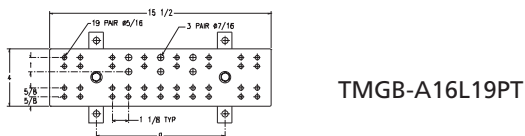
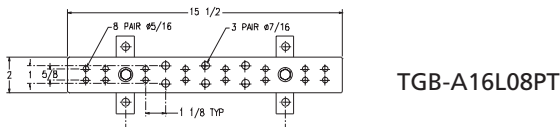
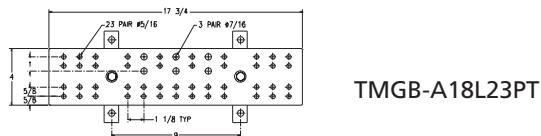
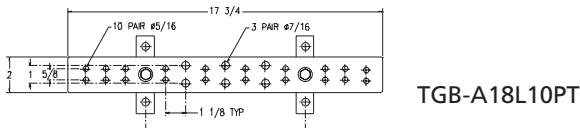
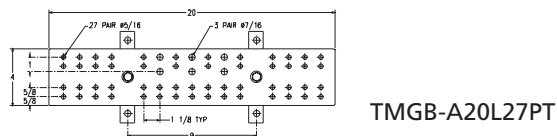
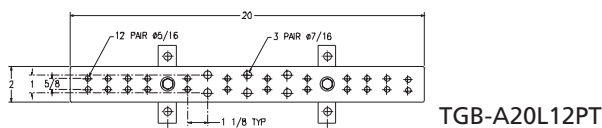
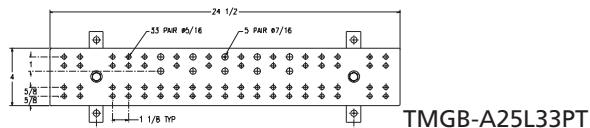
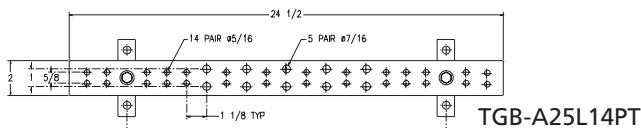
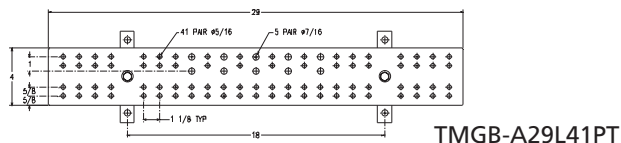
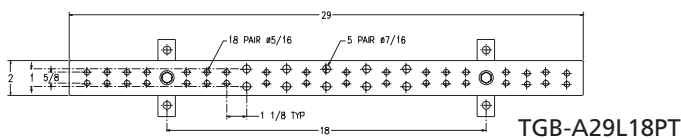


Figure 34.

