

SPECIAL FOCUS ON CALCIFIED, BIFURCATION & TOTAL OCCLUSION LESIONS

| | |
|-----------------------------|---|
| Wednesday, June 17th | NURSE / TECHNOLOGIST SYMPOSIUM INTERVENTIONAL CARDIOLOGY BOARD REVIEW COURSE ENDOVASCULAR FELLOWS COURSE |
| Thursday, June 18th | ENDOASCULAR SYMPOSIUM |
| Friday, June 19th | CORONARY / STRUCTURAL HEART SYMPOSIUM |

Highlights

- COMPLEX HIGH-RISK CORONARY CASES
- UNPROTECTED LEFT MAIN
- CHRONIC TOTAL OCCLUSION
- INTRAVASCULAR BRACHYTHERAPY
- ALCOHOL SEPTAL ABLATION
- AORTIC AND MITRAL VALVULOPLASTY
- TRANSCATHETER AORTIC VALVE REPLACEMENT
- ENDOVASCULAR INTERVENTION OF CALCIFIED LESIONS, TOTAL OCCLUSIONS AND TIBIAL DISEASE

CORONARY/STRUCTURAL HEART SYMPOSIUM DIRECTORS

Samin K. Sharma, MD, FACC, FSCAI
 Annapoorna S. Kini, MD, MRCP, FACC

CORONARY/STRUCTURAL HEART SYMPOSIUM CO-DIRECTORS

Pedro R. Moreno, MD, FACC
 Roxana Mehran, MD, FACC, FSCAI
 Joseph M. Sweeny, MD
 George Dangas, MD, PhD, FACC, FSCAI
 Jason Kovacic, MD, PhD, FACC, FSCAI
 Partho P. Sengupta, MD, DM, FACC, FASE

ENDOASCULAR SYMPOSIUM DIRECTOR

Prakash Krishnan, MD, FACC

ENDOASCULAR SYMPOSIUM CO-DIRECTORS

J. Michael Bacharach, MD, MPH, FACC, FSCAI
 Jose M. Wiley, MD, MPH, FACC, FACP, FSCAI
 Jeffrey W. Olin, DO, FACC, FAHA

NURSE / TECHNOLOGIST SYMPOSIUM DIRECTORS

Beth Oliver, DNP, RN
 Antonietta Tolentino, MSN, ANP-C





Dear Colleague,

We would like to welcome you to the Eighteenth Annual 2015 Live Symposium of Complex Coronary, Valvular and Vascular Cases

The field of Interventional Cardiology, along with Structural Heart Disease intervention and Endovascular interventions, continues to evolve with the rapid growth of established and new technology supplemented constantly by the results of the latest randomized trials and registries, with the common goal of improving procedural efficiency and safety.

As practicing interventionalists, we must constantly make changes to appropriately treat coronary, valvular, and peripheral vascular disease based on the available devices, therapy and trial results. Hence, we need to participate in continuing educational activities to remain current. The issue of appropriateness, and cost-effectiveness of a new techniques or technology always needs to be weighed against the established practices, before making any decision in our daily practice.

That is exactly what we plan to achieve in our three-day **Complex Coronary, Valvular and Vascular Cases Symposium**; to present concise and current important information that will update you on the latest techniques and technologies and help clarify emerging areas of diagnostic and therapeutic controversy. We will continue to offer recent updates of the Cath Lab along with various operational and technical topics in the dedicated one day Nurse Technologist Symposium on June 17th. To cover all the emerging areas in the field of intervention, we have dedicated separate days to topics of endovascular intervention on June 18th and coronary intervention and structural heart disease intervention on June 19th. We plan to present the interventional format consistent with the guidelines for appropriateness of coronary revascularization.

The primary focus of this course is to present a multi-device approach to complex revascularization of patients with complex coronary, structural heart and endovascular disease. Various novel interventional devices such as transcatheter aortic-valve replacement (TAVR) and newer techniques such as retrograde CTO recanalization and dedicated bifurcation stenting will be demonstrated using live case presentations as platform for discussion by the operators, panelists and audience. The program is complemented by unbiased commentary of live cases by world renowned experts and discussions intended to bring out general consensus regarding the most effective appropriate strategy that you can apply immediately in your practice.

In addition, the course will present updates on the common topics of controversy we frequently encounter in the field of interventional cardiovascular medicine. There will be selected lectures on various topics of interventional cardiology. These updates will supplement the live cases with an up-to-date, comprehensive review of the most important and controversial topics of the current year.

We are committed to offer the 2015 Live Symposium as a platform for continued innovation in interventional cardiovascular medicine with the main interest of achieving safe procedural outcomes and strong emphasis on the appropriateness of the revascularization choice.

We look forward to seeing you at this year's Symposium!

Sincerely,



Samin K. Sharma, MD, FACC, FSCAI
Coronary Symposium Director
Structural Heart Symposium Director



Annapoorna S. Kini, MD, MRCP, FACC
Coronary Symposium Director
Structural Heart Symposium Director





Symposium Overview

The primary focus of this course is to present a multidevice approach to revascularization of patients with complex coronary, valvular, peripheral and cardiovascular disease. The critical role of physiological fractional flow reserve (FFR), anatomical IVUS, near infrared spectroscopy (LipiScan) and Optical Coherence Tomography (OCT), in guiding interventions will be discussed and emphasized on the case by case basis. Various novel interventional devices and techniques such as orbital atherectomy (OA), intravascular brachytherapy (IVBT), alcohol septal ablation, valvuloplasty, percutaneous valve replacement, thrombectomy, and complex peripheral vascular intervention will be emphasized. Technical issues regarding retrograde CTO techniques will be demonstrated using the live case format. Treatment of emerging problems such as unprotected left main disease, heavily calcified lesions, bifurcation lesions, total occlusions, thrombotic lesions, recurrent in-stent restenosis, carotid and peripheral lesions will be emphasized by the faculty using live case presentations as platforms for discussion. Appropriateness of a revascularization choice and evidence-based practice guidelines will be discussed while simple and complex live cases are performed. Within the live case format, current topics will be presented to provide interventional cardiologists and vascular interventionalists with state-of-the-art information for managing patients as the dynamic field of interventional cardiology and endovascular intervention continues to evolve. Through discussion and viewing of live cases, we expect to emphasize the long-term role of interventional cardiology in managing particular lesion subsets.

TARGET AUDIENCE

This course is specifically designed for:

- Interventional Cardiologists who manage patients with complex, challenging anatomy for revascularization
- Interventional Radiologists and Vascular Surgeons
- Cardiology Fellows with an interest in Interventional Cardiology
- Nurses, Technicians, and other Allied Health Care Professionals who work in Cardiac Catheterization and Vascular Laboratories

EDUCATIONAL OBJECTIVES

The overall goal of this program is to enhance knowledge and improve understanding of various interventional techniques and devices with management of various cardiac disease states.

At the conclusion of this activity, participant will be able to:

- Select the appropriate devices for lesion preparation in complex calcified lesions and the need for LV support devices
- Plan for the best interventional strategy with increasing wire escalations for revascularization of chronic total occlusion
- Apply case selection and choose of the appropriate interventional devices for carotid and renal artery stenosis
- Select the appropriate cases for Transcatheter Aortic Valve Replacement (TAVR) or Surgical Aortic Valve Replacement (SAVR) or Balloon Aortic Valvuloplasty (BA)

ACCREDITATION

The Icahn School of Medicine at Mount Sinai is accredited by the Accreditation Council for Continuing Medical Education to provide continuing medical education for physicians.

CREDIT DESIGNATION

The Icahn School of Medicine at Mount Sinai designates this live activity for a maximum of 16.75 *AMA PRA Category 1 Credits(s)*TM. Physicians should claim only the credit commensurate with the extent of their participation in the activity.

Endovascular Symposium, Thursday, June 18th, 7.50 credits.

Coronary / Structural Heart Symposium, Friday, June 19th, 9.25 credits.

VERIFICATION OF ATTENDANCE

Verification of attendance will be provided to all professionals.

SPECIAL NEEDS

The Icahn School of Medicine at Mount Sinai is in full compliance with provisions of the Americans with Disabilities Act (ADA) and is accessible for individuals with special needs. If you would like to attend this conference and require any special needs or accommodations, please contact The Icahn School of Medicine at Mount Sinai at (212) 731-7950.

FACULTY DISCLOSURE

It is the policy of The Icahn School of Medicine at Mount Sinai to ensure objectivity, balance, independence, transparency, and scientific rigor in all CME sponsored educational activities. All faculty participating in the planning or implementation of a sponsored activity are expected to disclose to the audience any relevant financial relationships and to assist in resolving any conflict of interest that may arise from the relationship. Presenters must also make a meaningful disclosure to the audience of their discussions of unlabeled or unapproved drugs or devices. This information will be available as part of the course materials.





2015 Coronary Faculty

Coronary & Structural Heart Symposium Directors

Samin K. Sharma, MD, FACC, FSCAI

Director, Clinical & Interventional Cardiology
President, Mount Sinai Heart Network
Dean, International Clinical Affiliations
Zena & Michael A. Wiener Professor of Medicine
The Mount Sinai Hospital
New York, New York

Annapoorna S. Kini, MD, MRCP, FACC

Director, Cardiac Catheterization Laboratory
Director, Interventional Cardiology Fellowship Program
Professor of Medicine, Cardiology
The Mount Sinai Hospital
New York, New York



Coronary & Structural Heart Mount Sinai Co-Directors

George Dangas, MD, PhD, FACC, FSCAI

Professor of Cardiology & Vascular Surgery
Director, Cardiovascular Innovation

Jason Kovacic, MD, PhD, FACC, FSCAI

Assistant Professor of Medicine, Cardiology

Roxana Mehran, MD, FACC, FSCAI

Professor of Medicine,
Cardiology and Health Evidence & Policy
Director of Interventional Cardiovascular Research
and Clinical Trials Unit

Pedro R. Moreno, MD, FACC

Professor of Medicine, Cardiology
Director, Translational Research,
Cardiac Cath Lab

Partho P. Sengupta, MD, FACC, FASE

Associate Professor of Medicine, Cardiology
Director of Ultrasound Research, Medicine & Cardiology

Joseph M. Sweeney, MD

Director, The Lauder Ambulatory Cardiovascular Center
Assistant Professor of Medicine, Interventional Cardiology
Associate Director, Interventional Cardiology
Fellowship Program

Coronary & Structural Heart Mount Sinai Faculty

Valentin Fuster, MD, PhD, MRCP, MACC

Director, Mount Sinai Heart
Physician-in-Chief, Mount Sinai Medical Center
Richard Gorlin Professor of Medicine, Cardiology

Usman Baber, MD, MS

Assistant Professor of Medicine, Cardiology

Nitin Barman, MD, FACC

Assistant Professor of Medicine

Jacob Kamen, PhD, CMLSO, CHP

Chief Radiation Officer
Associate Professor of Radiology

Jagat Narula, MD, PhD, MACC

Professor of Medicine
Associate Dean for Global Health

Coronary & Structural Heart Symposium Guest Faculty

Deepak L. Bhatt, MD, MPH, FACC, FSCAI

Brigham and Women's Hospital
Boston, Massachusetts

Praveen Chandra, MD, DM, FACC, FESC, FAPSIC

Medanta - The Medicity
Gurgaon, India

Rajesh M. Dave, MD, FACC, FSCAI

The Ortenzio Heart Center, Holy Spirit Hospital
Camp Hill, Pennsylvania

Carlo Di Mario, MD, PhD, FACC

Royal Brompton Hospital
London, United Kingdom

Cindy L. Grines, MD, FACC, FSCAI

Detroit Medical Center Heart Hospital
Detroit, Michigan

James B. Hermiller, MD, FACC, FSCAI

St. Vincent Heart Center
Indianapolis, Indiana

Michael C. Kim, MD, FACC

Lenox Hill Heart and Vascular Institute
New York, New York

Spencer B. King, III, MD, MACC, FSCAI

Emory University School of Medicine
Atlanta, Georgia

Ajay J. Kirtane, MD, SM, FACC, FSCAI

New York-Presbyterian Hospital
New York, New York

Mitchell Krucoff, MD, FACC, FAHA, FSCAI

Duke University Medical Center
Durham, North Carolina

John M. Lasala, MD, PhD, FACC, FSCAI

Washington University School of Medicine
St. Louis, Missouri

S. K. Mathew, MD, DM, FACC, FSCAI, FESCI

Apollo Hospitals
Chennai, India

Sameer Mehta, MD, FACC, MBA

Lumen Foundation
Miami, Florida

Igor F. Palacios, MD, FACC, FSCAI

Massachusetts General Hospital
Interventional Cardiology Associates
Boston, Massachusetts

Manesh R. Patel, MD, FACC, FSCAI

Duke University Health System
Duke Clinical Research Institute
Durham, North Carolina

Tejas M. Patel, MD, DM, FACC, FSCAI, FESC

Apex Heart Institute
Ahmedabad, India

Augusto D. Pichard, MD, FACC, FSCAI

MedStar Washington Hospital Center
Washington, DC

Jeffrey J. Popma, MD, FACC, FSCAI

Beth Israel Deaconess Medical Center
Boston, Massachusetts

Alfredo E. Rodriguez, MD, PhD, FACC, FSCAI

Cardiovascular Research Center
Otamendi Hospital
Buenos Aires, Argentina

Sanjeev K. Sharma, MD, FESC

Eternal Heart Care Centre
Jaipur, India

Satyavan Sharma, MD, FACC, FSCAI

Bombay Hospital and Medical Research Centre
Mumbai, India

Ron Waksman, MD, FACC, FSCAI

MedStar Heart & Vascular Institute
Washington, DC



Coronary / Structural Heart Agenda

Friday, June 19, 2015

7:00 a.m. Registration / Continental Breakfast
AXA Equitable Center

7:40 a.m. Welcome and Introduction
Top Ten Advances of Interventional Cardiology 2014
Samin K. Sharma, MD

8:15 a.m. Subclinical Vascular Disease; Evolving Heart and Brain Integration
Valentin Fuster, MD, PhD

8:45 a.m. Live Case Presentations #1, #2 and #3:
Left Main, Bifurcation Lesions and CoreValve TAVR
Moderator: *Pedro R. Moreno, MD*

Panelists: *Carlo Di Mario, MD, PhD, Cindy L. Grines, MD, Spencer B. King, III, MD, Mitchell Krucoff, MD, John M. Lasala, MD, PhD, Manesh R. Patel, MD, Augusto D. Pichard, MD, S. K. Mathew, MD*

10:20 a.m. CURRENT HOT TOPICS #1

- **Has AUC for PCI Changed our Practice?** *Manesh R. Patel, MD*
- **FFR, IFR or CFR During PCI** *Carlo Di Mario, MD, PhD*
- **Biodegradable Polymers DES Update** *Augusto D. Pichard, MD*
- **Bioabsorbable DES Update** *S. K. Mathew, MD*

11:00 a.m. BREAK / VISIT EXHIBITS

11:15 a.m. KEYNOTE LECTURE:
Has SYNTAX and FREEDOM Trial Results Changed the Interventional Practice in USA?
Spencer B. King, III, MD

11:35 a.m. Live Case Presentations #4, #5, #6 and #7:
Calcified and Bifurcation Lesions, LV Support
Moderator: *Pedro R. Moreno, MD*

Panelists: *Deepak L. Bhatt, MD, Praveen Chandra, MD, DM, Rajesh M. Dave, MD, James B. Hermiller, MD, Ajay J. Kirtane, MD, Sameer Mehta, MD, Tejas M. Patel, MD, Alfredo E. Rodriguez, MD, PhD*

1:00 p.m. LUNCH / VISIT EXHIBITS

1:45 p.m. Live Case Presentations #8, #9, #10 and #11: CTO, LV Support, Sapien TAVR
Moderator: *George Dangas, MD, PhD*

Panelists: *Cindy L. Grines, MD, Michael C. Kim, MD, Ajay J. Kirtane, MD, Mitchell Krucoff, MD, John M. Lasala, MD, PhD, Igor F. Palacios, MD, Augusto D. Pichard, MD, Jeffrey J. Popma, MD, Sanjeev K. Sharma, MD*

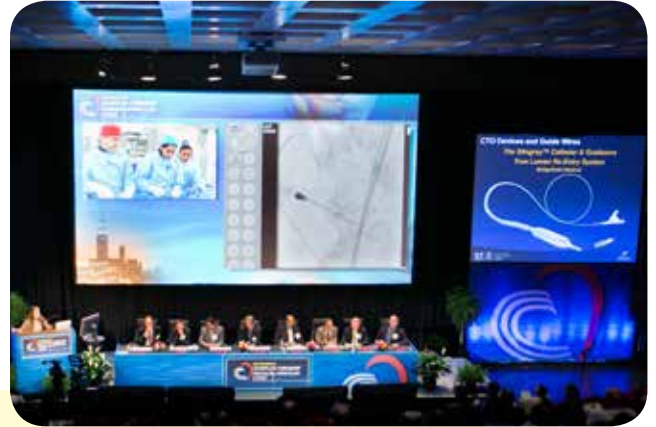
3:20 p.m. CURRENT HOT TOPICS #2:

- **Upcoming TAVR Devices and Trials** *Jeffrey J. Popma, MD*
- **Current Status of Mitral Valve Repair** *Igor F. Palacios, MD*
- **Data for Recent Antiplatelet/Antithrombotic** *Deepak L. Bhatt, MD*
- **How to Generalize Statewide STEMI Protocols** *Sameer Mehta, MD*
- **Transradial PCI; Any Convincing Data** *Tejas M. Patel, MD*
- **Late Stent Thrombosis: Have We Eliminated It?** *Ron Waksman, MD*

4:20 p.m. Live Case Presentations #12, #13, #14, #15 and #16:
Bifurcation and Diffuse Disease, Alcohol Septal Ablation, CoreValve TAVR
Moderator: *George Dangas, MD, PhD*

Panelists: *Deepak L. Bhatt, MD, Praveen Chandra, MD, DM, Michael C. Kim, MD, Sameer Mehta, MD, Igor F. Palacios, MD, Tejas M. Patel, MD, Jeffrey J. Popma, MD, Sanjeev K. Sharma, MD, Satyavan Sharma, MD*

5:55 p.m. Concluding Remarks and Future Directions for the 19th Symposium
Samin K. Sharma, MD and Annapoorna S. Kini, MD





Interventional Cardiology Board Review

June 17, 2015

Registration Fees Waived!

FELLOWS COURSE DIRECTORS

Samin K. Sharma, MD, FACC, FSCAI

Director, Clinical & Interventional Cardiology
President, Mount Sinai Heart Network
Zena & Michael A. Wiener Professor of Medicine
The Mount Sinai Hospital
New York, New York

Annapoorna S. Kini, MD, MRCP, FACC

Director, Cardiac Catheterization Laboratory
Director, Interventional Cardiology Fellowship Program
Professor of Medicine, Cardiology
The Mount Sinai Hospital
New York, New York



HIGHLIGHTS

- Coronary Atherosclerosis
- Coronary Anatomy and Imaging
- Update of Interventional Trials
- Choice of Coronary Revascularization

TARGET AUDIENCE

This course is specifically designed for:

- Interventional Cardiology Fellows
- Fellows accepted for Interventional Cardiology Fellowships
- Cardiologists preparing for Interventional Cardiology Board

LOCATION

The Mount Sinai Hospital
Hatch Auditorium
100th Street and 5th Avenue

OVERVIEW

The 2015 Interventional Cardiology Board Review Course is a one-day meeting in which the advanced trainee in Interventional Cardiology is exposed to all facets of complex heart disease and coronary intervention. The faculty includes many of the acknowledged pioneers in the field. The format will consist of didactic lectures and case presentations with ample opportunity to interact with faculty. The Interventional Board Review Course will offer in-depth coverage of all the major aspects in today's practice of interventional cardiology, including all aspects of coronary, valvular and structural heart disease. This course will be held in conjunction with the Complex Coronary and Structural Heart Live Symposium, which will show exemplary live cases on Friday, June 19th.

REGISTRATION

Registration is limited to 50 registrants and will be confirmed on a first-come, first-served basis. Hotel accommodations at the Sheraton New York Times Square Hotel for the nights of Tuesday, June 16th, Wednesday, June 17th and Thursday, June 18th will be covered for out-of-town attendees, along with a round-trip coach airline ticket. Attendance at the Coronary / Structural Symposium on Friday, June 19th is required. Full registration fees for the Complex Coronary Valvular & Vascular Symposium are waived.

TAVR Simulator Training by Medtronic and Edwards Lifesciences

Agenda | Wednesday, June 17, 2015

- 9:00 a.m.** **Registration / Continental Breakfast**
Hatch Auditorium, The Mount Sinai Hospital
- 9:15 a.m.** Welcome and Introduction *Samin K. Sharma, MD, Annapoorna S. Kini, MD*
- 9:30 a.m.** Coronary Anatomy, Physiology and Imaging *Annapoorna S. Kini, MD*
- 10:00 a.m.** Antiplatelet Therapy *Joseph M. Sweeney, MD*
- 10:30 a.m.** Understanding of Coronary Atherosclerosis *Pedro R. Moreno, MD*
- 11:00 a.m.** Radial Intervention *Nitin Barman, MD*
- 11:30 a.m.** Radiation Safety within the Cath Lab *Jacob Kamen, PhD*
- 12:00 p.m.** **LUNCH**
- 12:30 p.m.** LV Support during PCI *Ajay J. Kirtane, MD*
- 1:00 p.m.** Contrast Induced Nephropathy *Roxana Mehran, MD*
- 1:30 p.m.** Guide Wires and CTO Techniques *Samin K. Sharma, MD*
- 2:00 p.m.** Appropriateness of Coronary Revascularization *Usman Baber, MD*
- 2:30 p.m.** TAVR and TMVR *George Dangas, MD, PhD*
- 3:00 p.m.** Interventional Trials *Samin K. Sharma, MD*
- 4:00 p.m.** **CONCLUSION**



Board Review Course not approved for CME credits



Nurse / Technologist Symposium Agenda



Wednesday, June 17, 2015

- 8:00 a.m.** **Registration / Continental Breakfast**
AXA Equitable Center
- 8:30 a.m.** **New Frontiers in Cath Lab Nursing:
Caring for Patients Beyond the Procedure Room**
Beth Oliver, DNP, RN
- 8:50 a.m.** **Top Ten Advances of Interventional Cardiology 2014**
Samin K. Sharma, MD
- 9:20 a.m.** **In-stent Restenosis after DES: Treatment Options**
Antonietta Tolentino, MSN, ANP-C
- 9:40 a.m.** **FFR vs. IVUS in MACE Prediction**
Pedro R. Moreno, MD
- 10:00 a.m.** **BREAK**
- 10:15 a.m.** **Evolving Approaches for Aortic Stenosis:
Role of TAVR**
Melissa Mattimore, ACNP-BC
- 10:35 a.m.** **State of Carotid Stenting**
Jose M. Wiley, MD, MPH
- 10:55 a.m.** **Drug-Coated Balloon in Peripheral Arterial Intervention**
Rheoneil A. Lascano, FNP
- 11:15 a.m.** **View Into the Vessel: IVUS/NIRS, OCT**
Taurean Harrilal, PA-C
- 11:30 a.m.** **LUNCH / VISIT EXHIBITS**
- 1:00 p.m.** **STEMI Interventions: Guidelines & Strategies**
Annapoorna S. Kini, MD
- 1:20 p.m.** **DAPT Interruption & Discontinuation: When is it Safe?**
Nerissa Plondaya, ACNP-BC
- 1:40 p.m.** **State of Antiplatelet Therapy in PCI**
George Dangas, MD, PhD
- 2:00 p.m.** **Radial PCI: The Future is Now**
Nitin Barman, MD
- 2:20 p.m.** **BREAK / VISIT EXHIBITS**
- 2:40 p.m.** **Imaging Modalities in Search of Vulnerable Plaque**
Jagat Narula, MD, PhD
- 3:00 p.m.** **CTO Interventions Made Easy**
Pablo Enriquez, RCIS
- 3:20 p.m.** **Cardiovascular Endpoints: Data Elements & Definition**
Roxana Mehran, MD
- 3:40 p.m.** **Get With the Guidelines: Pre-procedural Evaluation**
Jennifer Del Campo, MSN, FNP-C
- 4:00 p.m.** **Closing Remarks/Awarding of Contact hours**
- 4:30 p.m.** **Wine & Cheese Reception in Exhibit Hall**

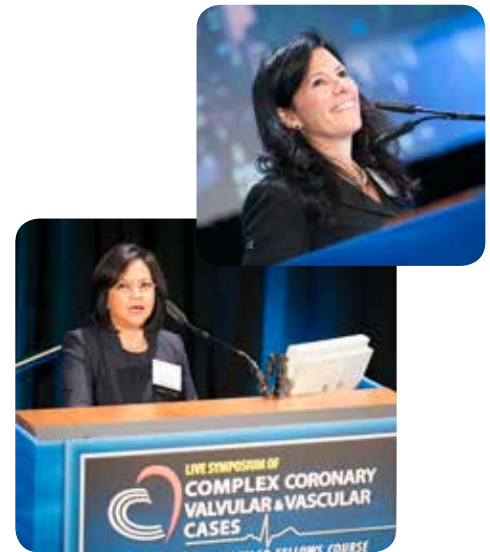
NURSE / TECHNOLOGIST SYMPOSIUM DIRECTORS

Beth Oliver, DNP, RN

Vice President of Cardiac Services for
the Mount Sinai Health System
New York, New York

Antonietta Tolentino, MSN, ANP-C

Adult Nurse Practitioner
The Mount Sinai Hospital, New York





Dear Colleague,

*We would like to welcome you to our **Endovascular Symposium** being held as part of the 18th Annual **Complex Coronary, Valvular and Vascular Cases Symposium***

The Endovascular Symposium intends to offer an open platform for discussion of new methods and technologies for every day solutions in the field of Endovascular Interventions. Our goal is to create an

interdisciplinary forum and illustrate the most effective approach in the management of PAD.

We will achieve this by bringing together colleagues of different specialties from across the country and abroad, who perform Endovascular Interventions. This one-day course will focus on presenting concise and current information that will update you with the latest techniques and technologies.

Various novel interventional devices, therapies and techniques such as sympathetic modulation, EVAR, treatment of calcific lesions, retrograde transcollateral CTO recanalization and pedal access will be demonstrated. This will be done by using live transmission of cases from sites both in the US and abroad allowing for discussion between the operators, panelists and the audience. The program is complemented by unbiased commentary of live cases by world renowned experts and discussions intended to bring out general consensus regarding the most effective and appropriate strategy that you can apply in your practice.



We look forward to seeing you at this year's Endovascular Symposium!

Sincerely,



Prakash Krishnan, MD, FACC
Director, Endovascular Services
Cardiac Catheterization Laboratory
Assistant Professor of Medicine
Icahn School of Medicine at Mount Sinai
New York, New York





2015 Endovascular Faculty

Endovascular Symposium Director

Prakash Krishnan, MD, FACC

Director, Endovascular Services
Cardiac Catheterization Laboratory
Assistant Professor of Medicine
Icahn School of Medicine at Mount Sinai
New York, New York



Endovascular Symposium Co-Directors

J. Michael Bacharach, MD, MPH, FACC, FSCAI

Section Head, Vascular Medicine and
Peripheral Vascular Intervention
North Central Heart Institute, Avera Heart Hospital
Sioux Falls, South Dakota

Jose M. Wiley, MD, MPH, FACC, FACP, FSCAI

Assistant Professor of Medicine and Radiology
Associate Director, Endovascular Intervention
The Mount Sinai Hospital
New York, New York

Jeffrey W. Olin, DO, FACC, FAHA

Professor of Medicine, Cardiology
Director, Vascular Medicine
Icahn School of Medicine at Mount Sinai
New York, New York

Endovascular Symposium Mount Sinai Faculty

Karthik Gujja, MD, MPH

Assistant Director of Endovascular Services

Vishal Kapur, MD, FACC, FSCAI

Assistant Professor of Medicine, Cardiology

Sung Yup Pablo Kim, MD, FACS

Assistant Professor of Surgery and Radiology

Paul S. Lajos, MD, RVPI

Associate Chief of Vascular Surgery
Site Chief, Mount Sinai Queens
Assistant Professor of Surgery and Radiology
Chief of Vascular Surgery
Metropolitan Hospital Center

Robert A. Lookstein, MD

Professor of Radiology and Surgery
Chief, Division of Interventional Radiology
Vice-Chair of Radiology, Interventional Services
and Imaging Guided Therapy

Javier Sanz, MD

Director, Cardiac CT/MR
Associate Professor of Medicine, Cardiology & Radiology

Daniel E. Soffer, MD, FACC, FSCAI

Associate Professor of Medicine
Co-Director Coratid Endovascular Services,
Interventional Cardiology

Ageliki G. Vouyouka, MD, FACS, RPVI

Associate Professor, Surgery and Radiology

Endovascular Symposium Guest Faculty

Anvar Babaev, MD, PhD, FACC, FSCAI

NYU Langone Medical Center
NYU School of Medicine
New York, New York

Subhash Banerjee, MD, FSCAI

Veterans Affairs North Texas Health Care System
UT Southwestern Medical Center
Dallas, Texas

Marianne Brodmann, MD

Medical University of Graz
Graz, Austria

Mark W. Burket, MD, FACC, FSCAI, FSVM

University of Toledo Medical Center
Toledo, Ohio

George S. Chrysant, MD, FACC, FSCAI, FSCCT

INTEGRIS Heart Hospital
INTEGRIS Baptist Medical Center
Oklahoma City, Oklahoma

Tyrone J. Collins, MD, FACC, FSCAI, FAHA

Ochsner Medical Center
New Orleans, Louisiana

Jose L. DeLeon, DPM

Montefiore Medical Center
New York, New York

Suhail Dohad, MD, FACC

The Heart Institute
Cedars Sinai Medical Center
Los Angeles, California

Mahir Elder, MD, FACC, FSCAI, FASNC

Harper University Hospital
Detroit Medical Center
Detroit, Michigan

Fabrizio Fanelli, MD, EBIR

Sapienza University of Rome
Rome, Italy

Ramesh M. Gowda, MD, FACC, FSCAI

Mount Sinai Beth Israel
New York, New York

Landfroi Graziani, MD

Istituto Clinico "Città di Brescia" Hospital
Istituto Clinico S. Anna Hospital
Brescia, Italy

Julian J. Javier, MD, FACC

Naples Vein Center
Naples, Florida

Amir Kaki, MD, FACC, FSCAI

Detroit Medical Center Heart Hospital
Detroit, Michigan

Rajesh K. Malik, MD, RPVI

MedStar Washington Hospital
Washington, DC

Carlos Mena, MD, FACC, FSCAI

Yale University School of Medicine
Yale-New Haven Hospital
New Haven, Connecticut

D. Christopher Metzger, MD, FACC, FSCAI

Wellmont CVA Heart Institute
Kingsport, Tennessee

Jihad A. Mustapha, MD, FACC, FSCAI

Metro Heart & Vascular
Wyoming, Michigan

Felipe Navarro, MD, FACC, FSVM

Carolinas HealthCare System, Northeast
Concord, North Carolina

Ravish Sachar, MD, FACC

North Carolina Heart & Vascular
Raleigh, North Carolina

Dierk Scheinert, MD

University Hospital Leipzig
Leipzig, Germany

Andrej Schmidt, MD

Department for Interventional Angiology
University Hospital Leipzig
Leipzig, Germany

Peter L. Smith, MD

Bayonne Medical Center
Bayonne, New Jersey

Michael J. Trepal, DPM, FACFAS

New York College of Podiatric Medicine
New York, New York

Craig M. Walker, MD, FACC, FACA, FACP, FCCP

Cardiovascular Institute of the South
Louisiana State University School of Medicine
Tulane University School of Medicine
Houma, Louisiana

Mitchell D. Weinberg, MD, FACC, RPVI

North University Hospital
Lenox Hill Hospital
Manhasset, New York

Mark H. Wholey, MD, SIR, FAHA

Allegheny Healthcare Network
University of Pittsburgh Medical Center - Shadyside
Pittsburgh, Pennsylvania



Endovascular Fellows Course

June 17, 2015

Registration Fees Waived!

DIRECTOR

Prakash Krishnan, MD, FACC
Director, Endovascular Services,
Cardiac Catheterization Laboratory

CO-DIRECTORS

Vishal Kapur, MD, FACC, FSCAI
Assistant Professor of Medicine, Cardiology
Karthik Gujja, MD, MPH
Assistant Director of Endovascular Services

OVERVIEW

The 2015 Endovascular Fellows Course is a one-day meeting in which the advanced trainee in Interventional Cardiology, Interventional Radiology and Vascular Surgery is exposed to all facets of complex vascular disease and endovascular intervention. The faculty includes many of the acknowledged pioneers in the field. The format will consist of didactic lectures and simulators with ample opportunity to interact with faculty. The Endovascular Fellows Course will offer in-depth coverage of all the major aspects in today's practice of vascular and endovascular medicine. This course will be held in conjunction with the Endovascular Live Symposium, which will show exemplary live cases on Thursday, June 18th.

LOCATION

CONVENE CONFERENCE CENTER, Times Square, 23rd Floor
810 7th Avenue between 52nd and 53rd New York, NY

HIGHLIGHTS

- Non-Invasive Diagnosis
- Review Angiographic Anatomy
- Case Based Discussions
- Venous Disease
- Wound Care
- Hands-On Workshop & Simulators

TARGET AUDIENCE

The program is intended primarily for Interventional Vascular, Radiology or 3rd Year General Cardiology Fellows who have been accepted into an Interventional Cardiology Program.

- Interventional Cardiology Fellows
- Vascular Surgery Fellows
- Radiology Fellows
- Vascular Medicine Fellows

REGISTRATION

Registration is limited and will be confirmed on a first-come, first-served basis. Hotel accommodations at the Sheraton Times Square Hotel for the nights of Tuesday, June 16th, Wednesday, June 17th and Thursday, June 18th will be covered for out-of-town attendees, along with a round-trip coach airline ticket.

Attendance at the Endovascular Symposium on Thursday, June 18th is required, full registration fees for the Complex Coronary & Vascular Symposium are waived.

Agenda | Wednesday, June 17, 2015

- 6:30 a.m.** Registration and Continental Breakfast
- 7:00 a.m.** Welcome and Introduction Prakash Krishnan, MD

Non-Invasive Evaluation of PAD and Venous Disease

- 7:05 a.m.** Role of ABI, PVR, Exercise Testing, Duplex Ultrasonography and Venous Ultrasound Jeffrey W. Olin, DO
- 7:25 a.m.** Role of CT and MRI Javier Sanz, MD

Iliac Disease: Endovascular Approach

- 7:35 a.m.** Approach to TASC A/B Iliac Disease: Equipment, Tips, and Tricks Ramesh M. Gowda, MD
- 7:45 a.m.** Approach to Iliac Bifurcation Lesions: Equipment, Tips, and Tricks J. Michael Bachrach, MD
- 7:55 a.m.** Approach to Iliac CTOs: Equipment, Tips, and Tricks Craig M. Walker, MD

8:05 a.m. BREAK / VISIT EXHIBITS

Femoro-Popliteal Lesions: Endovascular Management

- 8:15 a.m.** Endovascular Management of SFA Disease: Update and Review of Literature Subhash Banerjee, MD
- 8:25 a.m.** My Approach to Calcified SFA Disease: Equipment, Tips and Tricks Fabrizio Fanelli, MD
- 8:35 a.m.** My Approach to SFA CTOs: Equipment, Tips and Trick Anvar Babaev, MD
- 8:45 a.m.** My Approach to Isolated Popliteal Disease: Equipment, Tips and Tricks Mark W. Burket, MD
- 8:55 a.m.** Filters in the Endovascular Interventions of the Lower Extremity: Available Types and Where Does It Fit In My Practice? Mitchell D. Weinberg, MD
- 9:05 a.m.** Thrombectomy Devices: Available Types and When Does It Fit In My Practice? Carlos Mena, MD

9:15 a.m. BREAK / VISIT EXHIBITS

- 9:25 a.m.** Case 1- Iliac Case Review Renal, AAA, Mesenteric, Brachiocephalic and Carotid Arterial Disease
- 10:00 a.m.** State of Renal Intervention in 2015: FMD and Atherosclerotic Renal Disease Robert A. Lookstein, MD
- 10:10 a.m.** Approach to the Patient with AAA: Patient Selection, Equipment, Technique, Tips and Tricks and Review of Current Literature Suhail Dohad, MD

- 10:20 a.m.** Endovascular Management of Chronic Mesenteric Ischemia Ageliki G. Vouyouka, MD
- 10:30 a.m.** Endovascular Approach to Brachiocephalic Disease George S. Chrysant, MD
- 10:40 a.m.** Endovascular Management of Extra Cranial Carotid Stenosis: Arch types, Catheter Selection, Angiographic Views, Tips and Tricks Mark H. Wholey, MD
- 10:50 a.m.** Complications of Carotid Artery Stenting: How to Avoid; Tips and Tricks of Cerebral Rescue ... Tyrone J. Collins, MD
- 11:00 a.m. BREAK / VISIT EXHIBITS**
- 11:15 a.m.** Case 2-Femoropopliteal case review
- 11:50 a.m. WORKING LUNCH**
- 12:15 p.m.** How to Build a PAD Practice Amir Kaki, MD
- 12:25 p.m.** How to Build Peripheral Venous Disease Practice ... Sung Yup Pablo Kim, MD

Critical Limb Ischemia and Acute Limb Ischemia

- 1:00 p.m.** Endovascular Management of CLI: Literature Review Jihad A. Mustapha, MD
- 1:10 p.m.** Endovascular Approach to CLI: Access Points, Tips, Techniques and the Role of Standard Balloon Angioplasty, DCB, DES and Atherectomy Lanfroi Graziani, MD
- 1:20 p.m.** Endovascular Approach to a Patient with ALI Ravish Sachar, MD
- 1:30 p.m.** Clinical Diagnosis of Different Types of Foot Ulcers ... Jose L. DeLeon, DPM
- 1:40 p.m.** Wound Care Basics for the Interventionalists Michael J. Trepal, DPM
- 1:50 p.m. BREAK / VISIT EXHIBITS**

Venous Interventions

- 2:00 p.m.** Superficial Venous Incompetency-Role of Catheter Based Management using RFA, Laser and Mechanochemical Technologies Paul S. Lajos, MD
- 2:10 p.m.** Endovascular Management of DVT Julian J. Javier, MD
- 2:20 p.m.** IVC Filter Update Felipe Navarro, MD
- 2:30 p.m.** Endovascular Management of Pulmonary Embolism Mahir Elder, MD
- 2:40 p.m.** Endovascular Management of Dialysis Access Peter L. Smith, MD
- 2:50 p.m.** Complications in the Cath Lab Marianne Brodmann, MD
- 3:00 p.m.** Simulator Workshop with Faculty
- 4:20 p.m. Closing Remarks**
- 6:30 p.m. Fellows Course Dinner – Supported by Medtronic**

Fellows Course not approved for CME credits



Endovascular Symposium Agenda

Thursday, June 18, 2015

7:00 a.m. Registration / Continental Breakfast
AXA Equitable Center

8:00 a.m. Welcome and Introduction
Prakash Krishnan, MD and Samin K. Sharma, MD

8:05 a.m. Future Therapeutic Options in the Management of CLI / What Does the Future Hold?
Dierk Scheinert, MD

8:15 a.m. Drug-Coated Balloons in the Management of SFA Disease / Data & Current Trends
Fabrizio Fanelli, MD

8:25 a.m. Live Case #1: Broadcast from Leipzig, Germany
Moderator: *Prakash Krishnan, MD*
Operator: *Andrej Schmidt, MD*
Panelists: *Subhash Banerjee, MD, Mark W. Burket, MD, Suhail Dohad, MD, Fabrizio Fanelli, MD, Lanfroi Graziani, MD, Paul S. Lajos, MD, Dierk Scheinert, MD*

8:55 a.m. Drug-Eluting Stents in the Treatment of SFA Disease / Data & Current Trends
Suhail Dohad, MD

9:05 a.m. Economics of Drug Coated Technology in PAD
Mark W. Burket, MD

9:15 a.m. Live Case #2: Broadcast from Leipzig, Germany
Moderator: *Prakash Krishnan, MD*
Operator: *Andrej Schmidt, MD*
Panelists: *Subhash Banerjee, MD, Mark W. Burket, MD, Suhail Dohad, MD, Fabrizio Fanelli, MD, Lanfroi Graziani, MD, Paul S. Lajos, MD, Dierk Scheinert, MD*

9:45 a.m. BREAK / VISIT EXHIBITS

9:55 a.m. Endovascular Management of SFA Instent Re-Stenosis: Role of Atherectomy, Drug-Coated Balloons and Drug-Eluting Stents
Craig M. Walker, MD

10:05 a.m. Covered Stents in Femoropopliteal Disease
Subhash Banerjee, MD

10:15 a.m. Live Case #3: Broadcast from Wellmont CVA Heart Institute, Kingsport, TN
Moderator: *J. Michael Bacharach, MD*
Operator: *D. Christopher Metzger, MD*
Panelists: *Marianne Brodmann, MD, Mahir Elder, MD, Rajesh K. Malik, MD, Ageliki G. Vouyouka, MD, Craig M. Walker, MD, Mark H. Wholey, MD*

10:45 a.m. My Algorithm for the Treatment of Calcified SFA Lesions: Available Data Role of DCB / DES / Atherectomy & Supera
Marianne Brodmann, MD

10:55 a.m. Live Case #4: Broadcast from Mount Sinai Hospital, New York, NY
Moderator: *J. Michael Bachrach, MD*
Operators: *Prakash Krishnan, MD, Jose M. Wiley, MD, Bhaskar Purushottam, MD*
Panelists: *Marianne Brodmann, MD, Mahir Elder, MD, Rajesh K. Malik, MD, Ageliki G. Vouyouka, MD, Craig M. Walker, MD, Mark H. Wholey, MD*

11:25 a.m. Management of Popliteal Arterial Aneurysms
Rajesh K. Malik, MD

11:35 a.m. Live Case #5: Broadcast from Mount Sinai Hospital, New York, NY
Moderator: *J. Michael Bacharach, MD*
Operators: *Prakash Krishnan, MD, Vishal Kapur, MD, Bhaskar Purushottam, MD*
Panelists: *Marianne Brodmann, MD, Tyrone J. Collins, MD, Mahir Elder, MD, Rajesh K. Malik, MD, Craig M. Walker, MD, Mark H. Wholey, MD*





Endovascular Symposium Agenda



12:00 p.m.

LUNCH / VISIT EXHIBITS

1:00 p.m.

Covered Stents or BMS in Iliac Artery Stenosis - When & Why?
Mahir Elder, MD

1:10 p.m.

Live Case #6: Calcific Iliac
Broadcast from Wellmont CVA Heart Institute, Kingsport, TN

Moderator: *J. Michael Bacharach, MD*

Operator: *D. Christopher Metzger, MD*

Panelists: *Anvar Babaev, MD, George S. Chrysant, MD, Tyrone J. Collins, MD, Amir Kaki, MD, Carlos Mena, MD, Jihad A. Mustapha, MD*

1:40 p.m.

Plantar Loop Intervention: Rationale, Tools, Tips and Techniques
Lanfroi Graziani, MD

1:50 p.m.

Retrograde Approach to CLI: Use of Ultrasound, Tips and Techniques
Jihad A. Mustapha, MD

2:00 p.m.

Antegrade Wire Escalation Technique for Crossing CTOs - Wire Tips & Techniques
Anvar Babaev, MD

2:10 p.m.

Live Case #7 Broadcast from Mount Sinai Hospital, New York, NY

Moderator: *J. Michael Bacharach, MD*

Operators: *Prakash Krishnan, MD, Karthik Gujja, MD, Bhaskar Purushottam MD*

Panelists: *Anvar Babaev, MD, George S. Chrysant, MD, Lanfroi Graziani, MD, Carlos Mena, MD, Jihad A. Mustapha, MD, Peter L. Smith, MD*

2:40 p.m.

BREAK / VISIT EXHIBITS

2:50 p.m.

Endovascular Management of CFA disease: Patient selection, Tools, Tips and Techniques
Carlos Mena, MD

3:00 p.m.

Sympathetic Modulation for Hypertension and Other Cardiovascular Disease States: Future Directions
Mark H. Wholey, MD

3:10 p.m.

Live Case #8 Broadcast from Mount Sinai Hospital, New York, NY

Moderator: *J. Michael Bacharach, MD*

Operators: *Prakash Krishnan, MD, Vishal Kapur, MD, Bhaskar Purushottam, MD*

Panelists: *George S. Chrysant, MD, Tyrone J. Collins, MD, Fabrizio Fanelli, MD, Amir Kaki, MD, Jihad A. Mustapha, MD, Peter L. Smith, MD*

3:40 p.m.

Thrombolysis in Acute Limb Ischemia
Ravish Sachar, MD

3:50 p.m.

Carotid Stenting: Where do we stand in 2015? - What is the Future?
Tyrone J. Collins, MD

4:00 p.m.

BREAK / VISIT EXHIBITS

4:10 p.m.

Endovascular Management of DVT
Felipe Navarro, MD

4:20 p.m.

Update on Chronic Venous Insufficiency Management
Julian J. Javier, MD

4:30 p.m.

Role of Podiatry in Early PAD Diagnosis
Michael J. Trepal, DPM

4:40 p.m.

Taped Case #9: Venous

Moderator: *Jose M. Wiley, MD*

Operators: *Jose M. Wiley, MD, Karthik Gujja, MD*

Panelists: *Karthik Gujja, MD, Julian J. Javier, MD, Sung Yup Pablo Kim, MD, Felipe Navarro, MD, Peter L. Smith, MD*

5:00 p.m.

Concluding Remarks





Special Event

Complex High-Risk Interventional Procedures Symposium

EVENING SYMPOSIUM

Sheraton NY Times Square Hotel | Thursday, June 18th | 6:30 p.m. - 9:15 p.m.

Supported By: Abbott Vascular, Abiomed, Inc. & Cardiovascular Systems, Inc.

- | | |
|--|---|
| <p>6:30 p.m. Registration, Buffet Dinner & Cocktails <i>Sheraton NY Times Square Hotel, New York Ballroom, Level 3</i></p> <p>7:10 p.m. Basic Principals of Hemodynamic Support <i>John M. Lasala, MD, PhD</i></p> <p>7:15 p.m. Basic Principals of Orbital Atherectomy System <i>Stevan Himmelstein, MD</i></p> <p>7:40 p.m. Rationale for Complex Coronary Revascularization <i>Ajay J. Kirtane, MD</i></p> <p>8:00 p.m. Clinical and Practical Guidelines for LV Support <i>George Dangas, MD, PhD</i></p> | <p>8:20 p.m. Update in Bio-Absorbable Vascular Scaffold <i>Nick West, MD</i></p> <p>8:40 p.m. Orbital Atherectomy and LV Support in Clinical Practice: Case Based Examples of Do's and Don'ts <i>Samin K. Sharma, MD</i></p> <p>9:00 p.m. Panel Discussion and Q&A <i>Faculty and Audience</i></p> <p>9:15 p.m. Closing Remarks</p> |
|--|---|

New York City

www.nyctourist.com



Welcome to The Big Apple. Whether it's magnificent shopping, fine dining, the theater or sightseeing, New York City has it all. With average temperatures in June around 75 degrees, there is no better time to visit and enjoy everything the city that never sleeps has to offer!

THEATER www.newyorkcitytheatre.com

Seeing a show on Broadway and going to the theater in NYC is one of the most popular events for New York City tourists. See hit shows such as Aeldin, The Book of Mormon, The King and I, Kinky Boots, The Lion King, Wicked, Chicago, Jersey Boys, and Mamma Mia!

MUSEUMS

Solomon R. Guggenheim Museum
www.guggenheim.org

The Museum of Modern Art
www.MoMa.org

The American Museum of Natural History
www.AMNH.org

The Metropolitan Museum of Art
www.metmuseum.org

STATUE OF LIBERTY www.statueofliberty.org

Located in New York Harbor, the Statue of Liberty was a gift of international friendship from France to the United States. Stroll into the lobby where you can experience the original torch and the Statue of Liberty Exhibit, then proceed to the promenade area for an up close view of the statue and a spectacular view of New York Harbor. Ferries depart Battery Park to the Statue between the hours of 8:30 a.m. – 6:00 p.m.

CENTRAL PARK www.centralpark.com

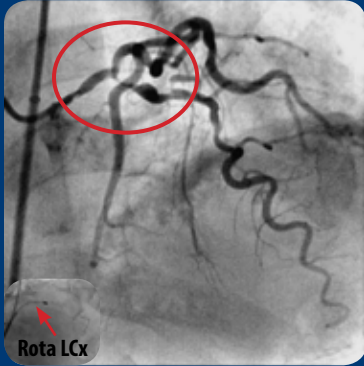
Central Park features 843 acres of beautiful landscape filled with numerous attractions such as the Central Park Zoo and Wildlife Center and the Children's Zoo. The park also has restaurants including the scenic Boathouse Restaurant.





Coronary Case Studies

Calcific Left Main, Proximal LAD and Circumflex Disease Undergoing Rotablation and Xience Expedition DES



Calcified LM, prox LAD and LCx disease

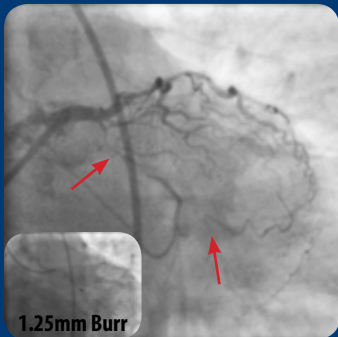


Post 1.25 and 1.75mm Rota Burrs

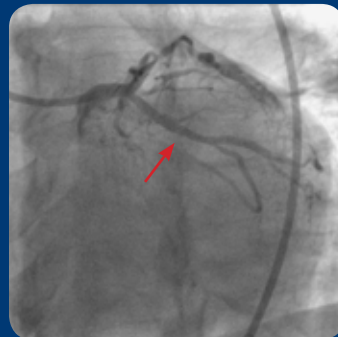


Final results with 0% residual stenosis and patent LCx

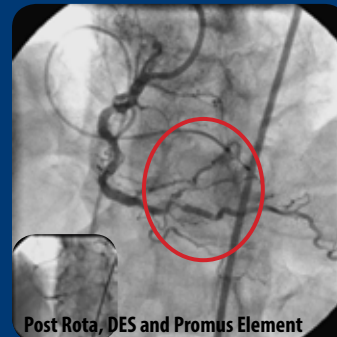
Extensive 3V Calcific CAD: Complex Multivessel PCI of Prox LCx, OM2, Distal RCA and LAD/D1



Baseline subtotal prox LCx and OM2 disease



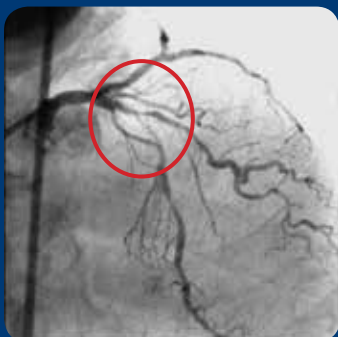
Post Rota and Promus Element 2.5/38mm stent



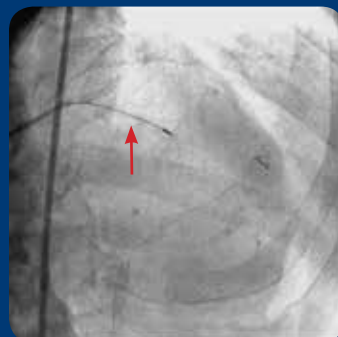
Subtotal calcific distal RCA bifurcation lesion



Final results with 0% residual



80% prox LAD/Diagonal calcified bifurcation



Post Rota of the LAD, with 1.5mm Burr



"V Stenting" using Promus Premier 3.0/38mm in LAD and 2.75/32 in D1

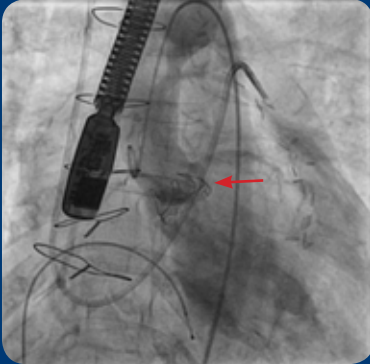


Final results with 0% residual

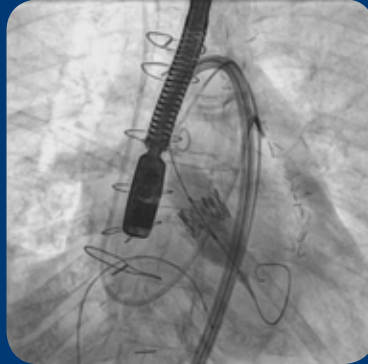


Coronary Case Studies

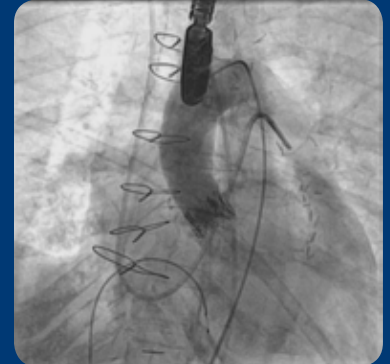
Valve-in-Valve Sapien TAVR for Bioprosthetic Aortic Valve Stenosis/Insufficiency



Aortogram of failing Carpentier Edwards Bioprosthetic valve with stenosis and insufficiency

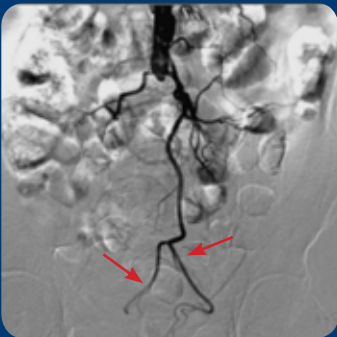


23mm SapienXT Valve being implanted



Final results of valve-in-valve, trace aortic insufficiency and 10mm transaortic gradient

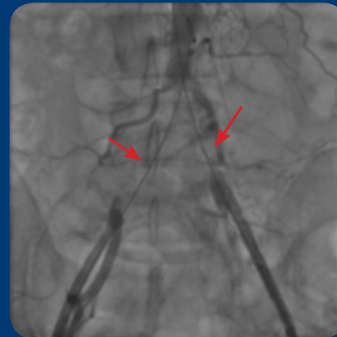
Intervention of Distal Aortic Occlusion



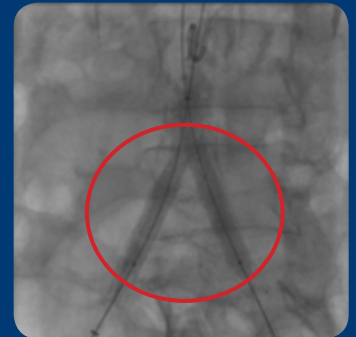
Occluded distal aorta



Reconstitution of the iliac via collaterals



Successful crossing of CTO

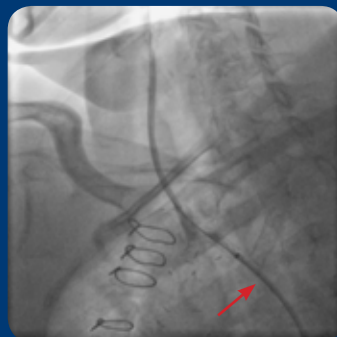


Final Results: Successful angioplasty/stent of distal aorta

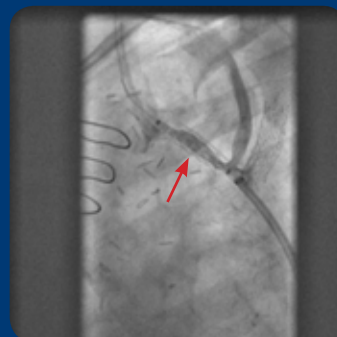
Complex Intervention Aortocarotid Bypass Graft



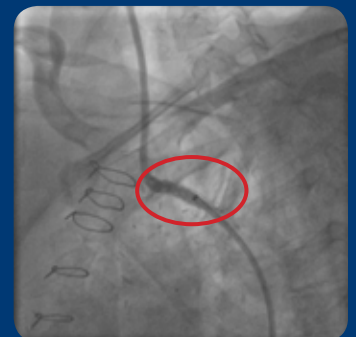
Stenosed aortocarotid bypass graft with prior stent



Successful crossing with Stiff Angled Glidewire



Covered stent with 8/20 atrium

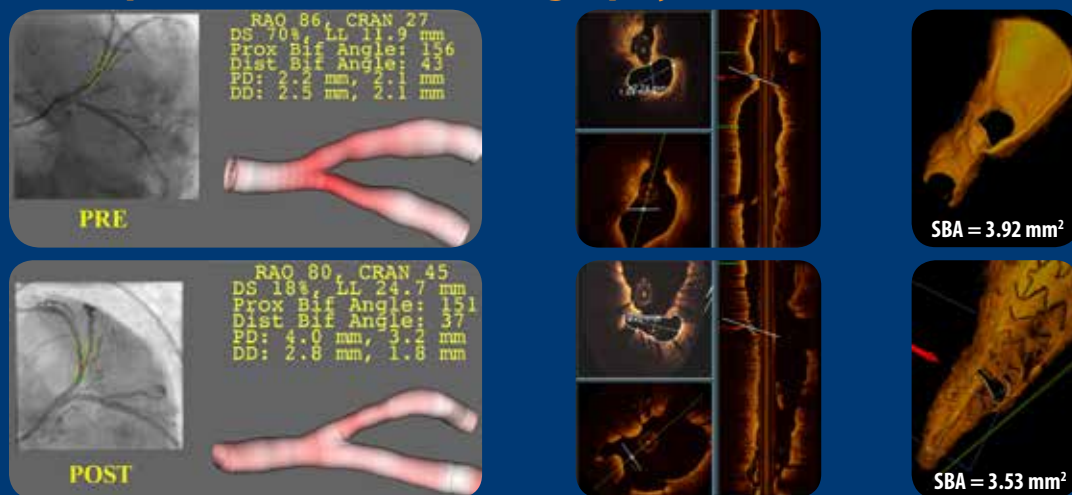


Final Results: Successful angioplasty/stent of severe 99% stenosed aortocarotid bypass graft



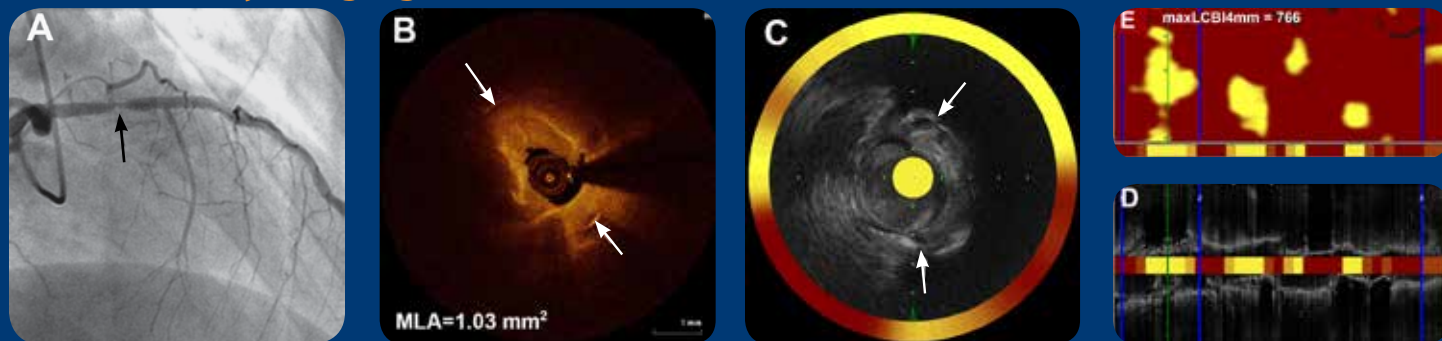
Imaging Case Studies

Three-Dimensional Quantitative Coronary Angiography (3D-QCA) And Optical Coherence Tomography (OCT) Assessment of Bifurcation Lesions



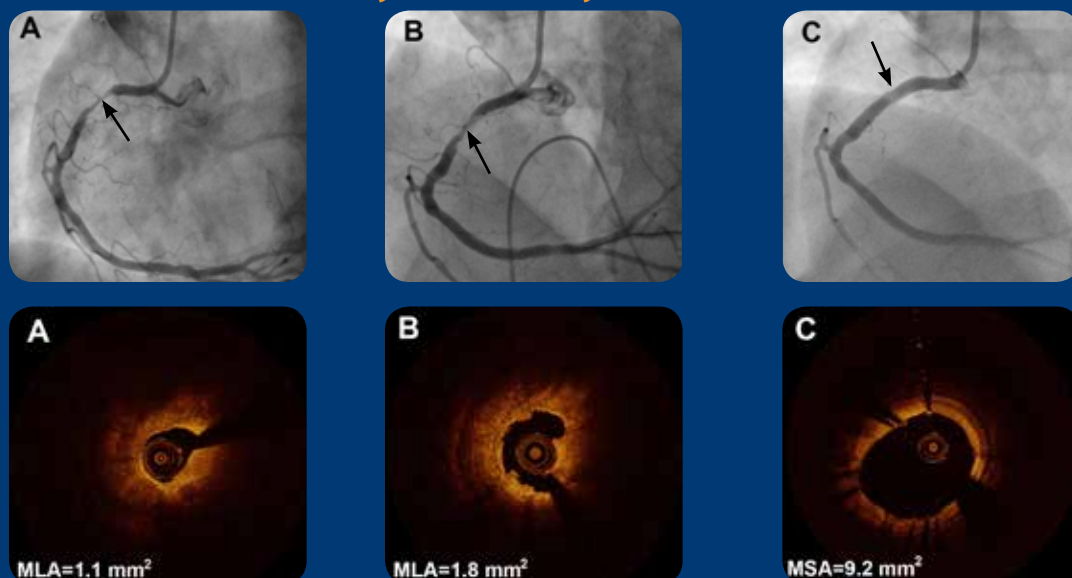
3D-QCA and 3D-OCT assessment of bifurcation angles, diameter stenosis, and the area of side branch ostium (SBA). There was no change in bifurcation angle and SBA after provisional stenting

Multimodality Imaging for In-Stent Restenosis (ISR) Lesion Due to Neointima



Coronary angiography (A), OCT (B), IVUS (C, D), and near-infrared spectroscopy (NIRS) (E) images of ISR lesion with high lipid content (maxLCB14mm=766 at the site of MLA, green line in D, E). Arrows in B and C point to stent struts.

Orbital Atherectomy in a Heavy Calcified Lesion



Coronary angiography and OCT images before orbital atherectomy (OA) (A), after OA (B), and after stenting (C)



Symposium Supporters

The symposium is being funded in part through educational grants and exhibit fees from medical device and pharmaceutical industries. The following is a list of 2014 supporters and exhibitors. A complete list of 2015 contributors and appropriate acknowledgement will be given to all supporters in the course syllabus. We appreciate their participation in this conference and their support of continuing medical education.

Abbott Vascular



Boston Scientific

Terumo Medical Corporation

Covidien

The Medicines Company



Medtronic

Cardiovascular Systems, Inc

ABIOMED, Inc.
AngioScore, Inc.

Bard Peripheral Vascular, Inc.

Bayer HealthCare
Cook Medical

Edwards Lifesciences

Spectranetics
St. Jude Medical

Volcano Corporation

AccessClosure, Inc. / Mynx
Acist Medical Systems
Angiodynamics
AstraZeneca
B. Braun Medical
Best Vascular Novoste

Boehringer Ingelheim
Bristol Myers Squibb
Cordis Corporation
Daiichi-Sankyo, Inc.
Eli Lilly & Company
Gilead Sciences, Inc.

Guerbet, LLC
InfraReDx, Inc.
Janssen Pharmaceuticals
Lifescync Corporation
MAQUET
Pfizer

Philips Healthcare
Physio-Control, Inc.
TriReme
TrYton Medical
Vascular Solutions, Inc.



Registration Information

FULL REGISTRATION RATES

The **Full Registration Fee** for this CME activity is \$400.00 for physicians who are members of SCAI (Society for Cardiovascular Angiography and Interventions). The fee for physicians who are non-members of SCAI is \$600.00. A reduced registration fee of \$200.00 is available for Residents, Nurses, Technicians and Mount Sinai Affiliates. The registration fee for Industry Personnel is \$400.00. Fellows registration fees are **WAIVED!** Your full registration fee includes attendance at the Wednesday, Thursday and Friday Sessions, course materials, continental breakfasts, refreshment breaks, lunches and the Thursday Evening Symposium.

DAILY REGISTRATION RATES

Nurse Technologist Symposium, Wednesday, June 17th, one-day rate is \$75.00.

Endovascular Symposium, Thursday, June 18th one-day rate is \$200.00 for physicians who are members of SCAI. The one-day registration fee for physicians who are non-members of SCAI is \$300.00. A reduced registration fee of \$100.00 is available for Residents, Nurses, Technicians and Mount Sinai Affiliates. The registration fee for Industry Personnel is \$200.00.

Coronary / Structural Heart Symposium, Friday, June 19th one-day rate is \$200.00 for physicians who are members of SCAI. The one-day registration fee for physicians who are non-members of SCAI is \$300.00. A reduced registration fee of \$100.00 is available for Residents, Nurses, Technicians and Mount Sinai Affiliates. The registration fee for Industry Personnel is \$200.00.

REFUNDS

Cancellations will be accepted through Wednesday, June 3, 2015 and are subject to a \$50 cancellation fee. There will be no refund of tuition for cancellations received after that date. The Post-Graduate School for Continuing Medical Education must receive written notification of your intent to cancel before the cancellation deadline. No refund of tuition will be given for no-shows.

NEW 2015 SYMPOSIUM LOCATION

AXA Equitable Center
787 Seventh Avenue
Between 51st and 52nd Streets
New York, NY 10029

NOTE: The AXA Equitable Center is located directly across the street from the Sheraton New York Times Square Hotel!

Parking: There are several options for parking that are close to the Equitable Center:

ICON Circle Parking - \$37 / Day
209 W. 51st Street
(Between 7th & Broadway)

ICON Matinee 52 - \$37 / Day
215 W. 52nd Street
(Between 7th & Broadway)

Sheraton Times Square Hotel - \$57 / Day
53rd Street Between 6th & 7th (Directly across from the Equitable Center)

For Additional Parking Details Go To:
<http://www.iconparkingsystems.com/nyc-parking/>

HOTEL ACCOMMODATIONS

Sheraton New York Times Square Hotel
811 Seventh Avenue, 53rd Street
New York, NY 10019
Guest Telephone: (212) 581-1000

A block of rooms has been reserved at the Sheraton NY Times Square Hotel for attendees of the 2015 CCVVC Symposium at a special reduced rate of \$365.00 single or double occupancy (per night), plus tax. To receive the discounted room rate, reservations must be confirmed by Monday, May 18, 2015. After that date, reservations will be subject to space and rate availability. Please note, June is a very busy time in NYC. Hotel rooms will be scarce and your room rate will increase if your reservations are not made prior to the cut-off date.

Please contact the Reservations Department directly at (212) 581-1000 to request accommodations. When making your reservation, please be sure to mention that you will be attending the Mount Sinai Hospital Cardiology Symposium.

You may also book your room reservations directly online by visiting our website at www.ccsymposium.org.

AIRPORT TRANSPORTATION

The Sheraton New York Times Square Hotel is located in midtown Manhattan. The hotel is 45 minutes from LaGuardia Airport and 60 minutes from the John F. Kennedy International Airport. Yellow Medallion Taxi service is available from LaGuardia Airport for approximately \$45.00 (one-way) and is available from the JFK International Airport for approximately \$75.00 (one-way). Rental car services are available at both airports. Hotel garage parking is available for \$55.00 per 24-hours.





Registration Form



To register for the
**2015 Live Symposium of Complex
Coronary, Valvular & Vascular Cases**
Complete this form and return
to Gaffney Events

Gaffney Events
27322 NE 143rd Pl.
Duvall, WA 98019
PH: (425) 844-9019
FAX: (425) 788-0668

VISIT OUR WEBSITE TO:

- View high quality video highlights from the 2014 Symposium including lectures and case demonstrations
- Join user discussion forums
- View live cases via Live Webcasts

Fax registration form ONLY if payment is made by credit card.

CONTACT INFORMATION

Name: _____ Institution: _____

Mailing Address: _____

City: _____ State: _____ Zip/Postal Code: _____

Mobile Phone: (____) _____ Office Fax: (____) _____

Email Address (required for registration confirmation): _____

Professional Degree or Credential: MD DO PhD RN Other _____

Early Registration Savings!

REGISTRATION RATES ARE DISCOUNTED 25% OFF THE LISTED PRICE IF RECEIVED PRIOR TO MAY 22, 2015

Fellows Fees Waived!

In order to receive the Complimentary Fellows Full-Meeting Registration, please contact Jennifer Berens at jennifer@gaffneyevents.com to obtain a fellows registration form. Complimentary registration is limited and on a first-come, first-served basis.

FULL SYMPOSIUM REGISTRATION

Complex Coronary, Valvular & Vascular Cases Symposium

\$600.00 Physician, Non-Member of SCAI

\$400.00 Physician, Member of SCAI

\$400.00 Industry Professional

\$200.00 Nurse, Tech, Mount Sinai Affiliates

As a Full-Registration participant, please check the day(s) you will be attending (REQUIRED):

Wednesday Cardiovascular Nurse / Technologist Symposium

Thursday Endovascular Symposium

Friday Coronary / Structural Heart Symposium

Interventional Board Review Course

(Registration and Application Available Online)

Endovascular Fellows Course

(Registration and Application Available Online)

Complex High-Risk Interventional Procedures Symposium

Will you attend the Thursday Evening Symposium at the Sheraton New York Times Square Hotel? YES NO

METHOD OF PAYMENT

Check (made payable to The Icahn School of Medicine at Mount Sinai). Amount: \$ _____ Credit Card: VISA MasterCard American Express

Credit Card Number: _____ Expiration Date: _____ CVC: _____

Name as it appears on credit card: _____ Signature: _____

Office Use Only: Check No.: _____ Amount: \$ _____ Date: _____

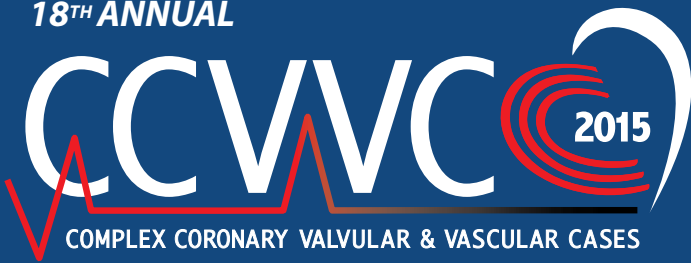


gaffneyevents

15321 Main Street NE
P.O. Box 219
Duvall, WA 98019

PRESORTED
FIRST CLASS MAIL
U.S. POSTAGE
PAID
PERMIT NO. 315
SEATTLE, WA

18TH ANNUAL



JUNE 17 –19, 2015
New York, New York



www.ccsymposium.org

