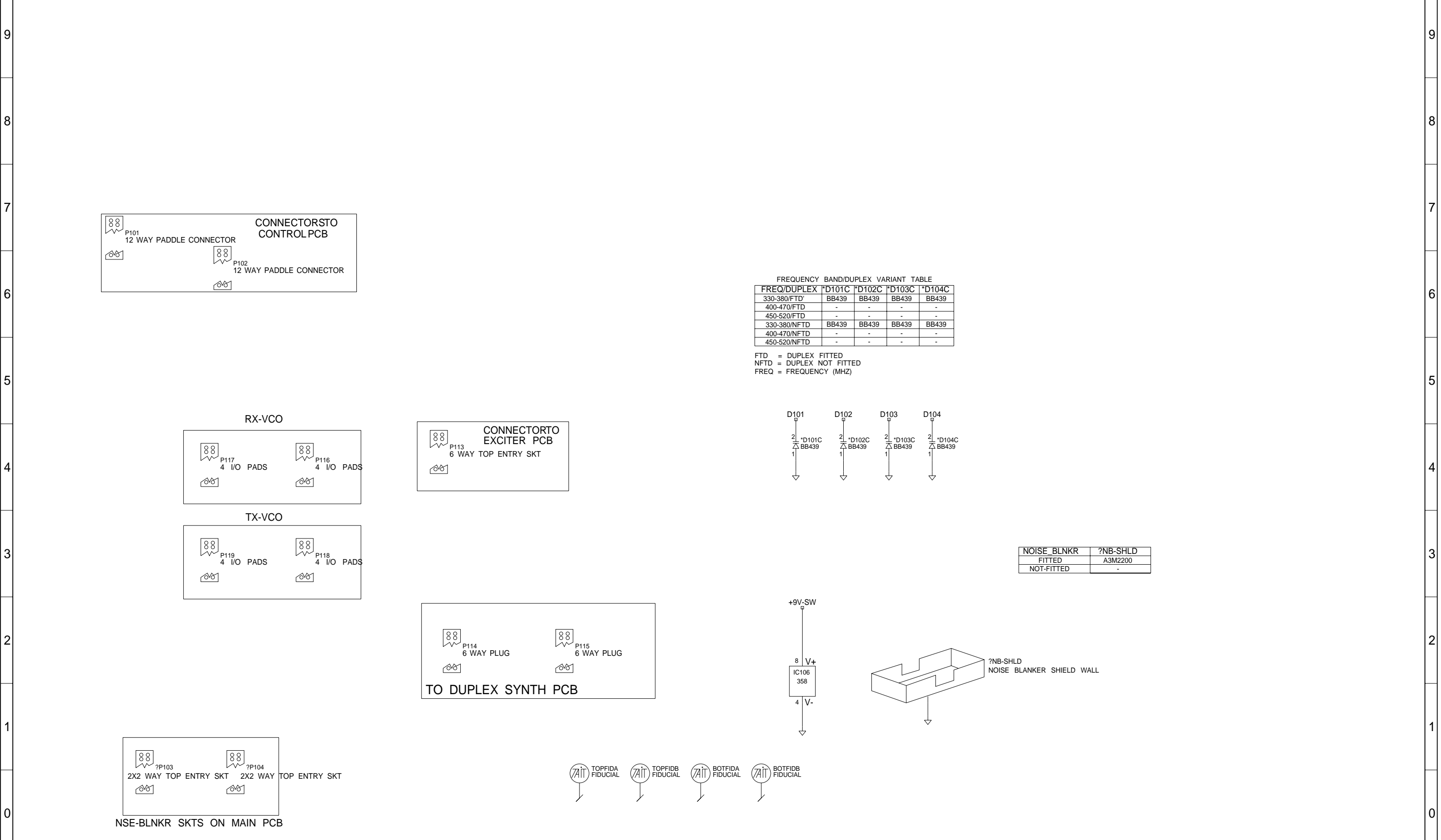


REV/ISS	AMENDMENTS	DRAWN	CHKD	D.O.	APV/D	DATE
6A	UPDATED TO ISSUE 6A	YH				12-4-96
5B	ROTATED PCB	MC				
4A	ADDED VCTCXO ETC	MC				
3A	CHN 9106-932	MC	H.M.	M.B.		17/09/91
2D	ADDED ASSEMBLY DRAWINGS	M.H.	S.C.	S.C.		27/06/91
2C	CHN 9105-406 & 9105-395	MC	S.C.	H.O.		17/05/91
2B	MINOR COMPONENT VALUE CHANGES	M.H.	S.C.	H.O.		04/02/91
2A	UPDATE TO ISSUE 2A	B.P.	H.O.	H.O.		22/08/90
1A	REMOVED R187 & R188 NTC. RELATED VCO PCBs.	J.F.	H.O.	H.O.		14/07/90

FREQ/DUPLEX	R240	R243	R253	R256	C281	C284	C285	C287	C288	C293	L280	L282	L283	L285	L286
330-380FTD	10PS	10PS	10PS	10PS	10PS	10PS	10PS	10PS	10PS	10PS	25H30	25H30	25H30	25H25	30NHV
400-470FTD	10PS	10PS	10PS	10PS	10PS	10PS	10PS	10PS	10PS	10PS	25H30	25H30	25H30	25H25	30NHV
450-520FTD	10PS	10PS	10PS	10PS	10PS	10PS	10PS	10PS	10PS	10PS	25H30	25H30	25H30	25H25	30NHV
330-380NFTD	39S	0S	47KS	0S	47PS	10PS	47PS	6PS	15PS	3PS	15H30	15H30	15H25	15H25	25H30
400-470NFTD	39S	0S	47KS	0S	47PS	10PS	47PS	6PS	15PS	3PS	15H30	15H30	15H25	15H25	25H30
450-520NFTD	39S	0S	47KS	0S	47PS	10PS	47PS	6PS	15PS	3PS	15H30	15H30	15H25	15H25	25H30

FTD = DUPLEX FITTED
 NFTD = DUPLEX NOT FITTED
 FREQ = FREQUENCY (MHZ)

A B C D E F G H J K L M N P Q R



6A	UPDATED BOARD TO ISSUE 6A	YH			12-4-95
5A		DJW			03/12/94
4A	UPDATED VCTCXO ETC.	MC			
3A	CHN 91/06-632	M.C.	H.M.	M.B.	17/09/91
2D	ADDED ASSEMBLY DRAWINGS.	M.H.	S.C.	S.C.	27/06/91
2C	CHN 91/05-406 & 91/05-395.	M.C.	S.C.	H.O.	17/05/91
2B	MINOR COMPONENT VALUE CHANGES.	M.H.	S.C.	H.O.	04/02/91
2A	UPDATE TO ISSUE 2A	B.P.	H.O.	H.O.	22/08/90
1A	REMOVED R187 & R188 NTC. RELAYED VCO PCBs.	J.F.	H.O.	H.O.	14/07/90
REV/ISS	AMENDMENTS	DRAWN	CHKD	D.O.	APVD DATE

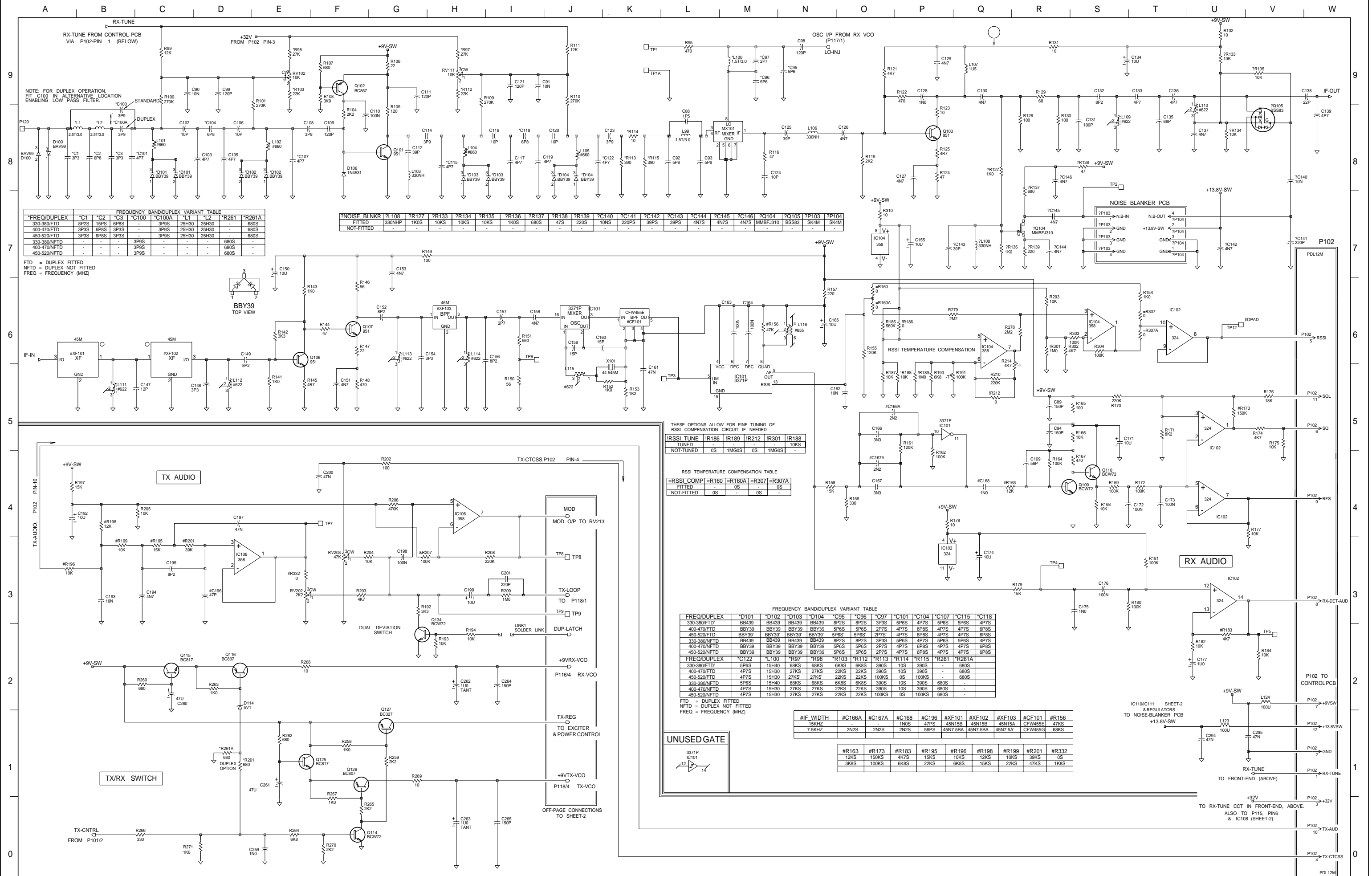
© **TAIT ELECTRONICS**
T750 70MHZ SWITCHING RANGE CONNECTORS

IPN: 220-01195-06
 DESIGNER: DJW
 PROJECT: T700

ISSUE: D
 FILE NAME: 119506D
 FILE DATE: 26-04-99

ID: 2.S.C. 1
 NO.SHEETS: 3

A B C D E F G H J K L M N P Q R



*FREQ/DUPLEX	*C1	*C2	*C3	*C100	*C100A	*L1	*L2	*R261	*R261A
330-380FTD	8P2S	15P5	6P8S	-	3P9S	25H30	25H30	-	680S
400-470FTD	3P3S	6P8S	3P3S	-	3P9S	25H30	25H30	-	680S
450-520FTD	3P3S	6P8S	3P3S	-	3P9S	25H30	25H30	-	680S
330-380NFTD	-	-	-	3P9S	-	-	-	-	680S
400-470NFTD	-	-	-	3P9S	-	-	-	-	680S
450-520NFTD	-	-	-	3P9S	-	-	-	-	680S

FTD = DUPLEX FITTED
NFTD = DUPLEX NOT FITTED
FREQ = FREQUENCY (MHZ)

?NOISE BLNKR	?L108	?R127	?R133	?R134	?R135	?R136	?R137	?R138	?R139	?C140	?C141	?C142	?C143	?C144	?C145	?C146	?Q104	?Q105	?P103	?P104
FITTED	330NH	1K0S	10KS	10KS	10KS	680S	47S	220S	10NS	220PS	39PS	39PS	4N7S	4N7S	4N7S	MMBFJ310	BSS83	SK4M	SK4M	
NOT-FITTED	-	-	-	-	-	-	-	-	-	-	-	-	-	-	-	-	-	-	-	-

THESE OPTIONS ALLOW FOR FINE TUNING OF RSSI COMPENSATION CIRCUIT IF NEEDED

IRSSI TUNE	IR186	IR189	IR212	IR301	IR188
TUNED	0S	1MG0S	0S	1MG0S	-
NOT-TUNED	0S	0S	0S	0S	-

RSSI TEMPERATURE COMPENSATION TABLE

IRSSI COMP	R160	R160A	R307	R307A
FITTED	0S	-	0S	-
NOT-FITTED	0S	-	0S	-

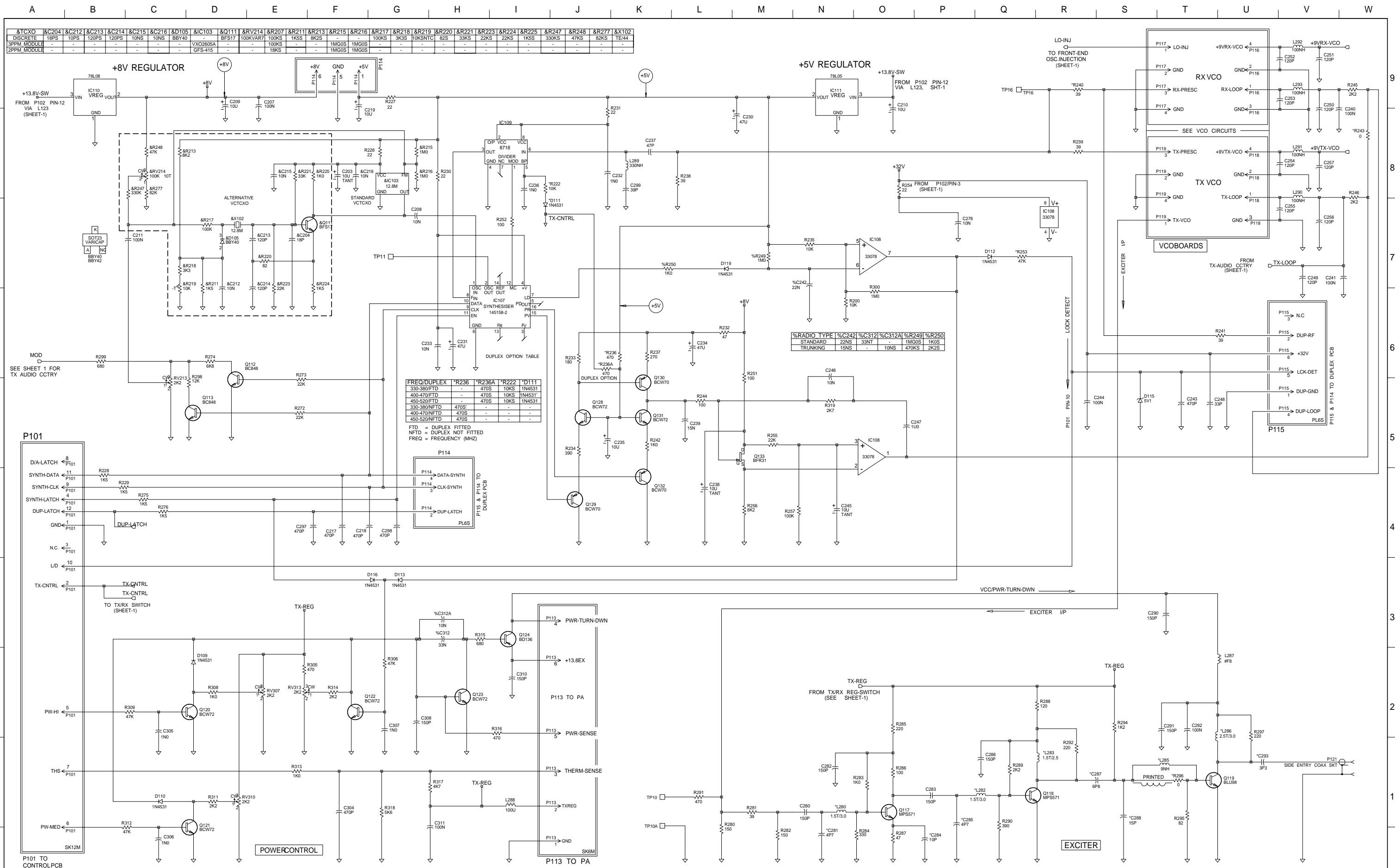
FREQ/DUPLEX	*D101	*D102	*D103	*D104	*C95	*C96	*C97	*C101	*C104	*C107	*C115	*C118
330-380FTD	BB439	BB439	BB439	BB439	8P2S	8P2S	3P3S	5P6S	4P7S	5P6S	5P6S	4P7S
400-470FTD	BBY39	BBY39	BBY39	BBY39	5P6S	5P6S	2P7S	4P7S	6P8S	4P7S	4P7S	6P8S
450-520FTD	BBY39	BBY39	BBY39	BBY39	5P6S	5P6S	2P7S	4P7S	6P8S	4P7S	4P7S	6P8S
330-380NFTD	BB439	BB439	BB439	BB439	8P2S	8P2S	3P3S	5P6S	4P7S	5P6S	5P6S	4P7S
400-470NFTD	BBY39	BBY39	BBY39	BBY39	5P6S	5P6S	2P7S	4P7S	6P8S	4P7S	4P7S	6P8S
450-520NFTD	BBY39	BBY39	BBY39	BBY39	5P6S	5P6S	2P7S	4P7S	6P8S	4P7S	4P7S	6P8S

FREQ/DUPLEX	*C122	*L100	*R97	*R98	*R103	*R112	*R113	*R114	*R115	*R261	*R261A
330-380FTD	5P6S	15H40	68KS	68KS	68KS	68KS	390S	10S	390S	-	680S
400-470FTD	4P7S	15H30	27KS	27KS	22KS	22KS	390S	10S	390S	-	680S
450-520FTD	4P7S	15H30	27KS	27KS	22KS	22KS	100KS	0S	100KS	-	680S
330-380NFTD	5P6S	15H40	68KS	68KS	68KS	68KS	390S	10S	390S	680S	-
400-470NFTD	4P7S	15H30	27KS	27KS	22KS	22KS	390S	10S	390S	680S	-
450-520NFTD	4P7S	15H30	27KS	27KS	22KS	22KS	100KS	0S	100KS	680S	-

#IF WIDTH	#C166A	#C167A	#C168	#C196	#XF101	#XF102	#XF103	#CF101	#R156
15KHZ	-	-	1N5S	47PS	45N15B	45N15B	45N15A	CFW455E	47KS
7.5KHZ	2N2S	2N2S	2N2S	56PS	45N7.5BA	45N7.5BA	45N7.5A	CFW455G	68KS

#R163	#R173	#R183	#R195	#R196	#R198	#R199	#R201	#R332
12KS	150KS	4K7S	15KS	10KS	12KS	10KS	39KS	0S
3KS9S	100KS	6KS	22KS	6KS	15KS	22KS	47KS	1KS9S

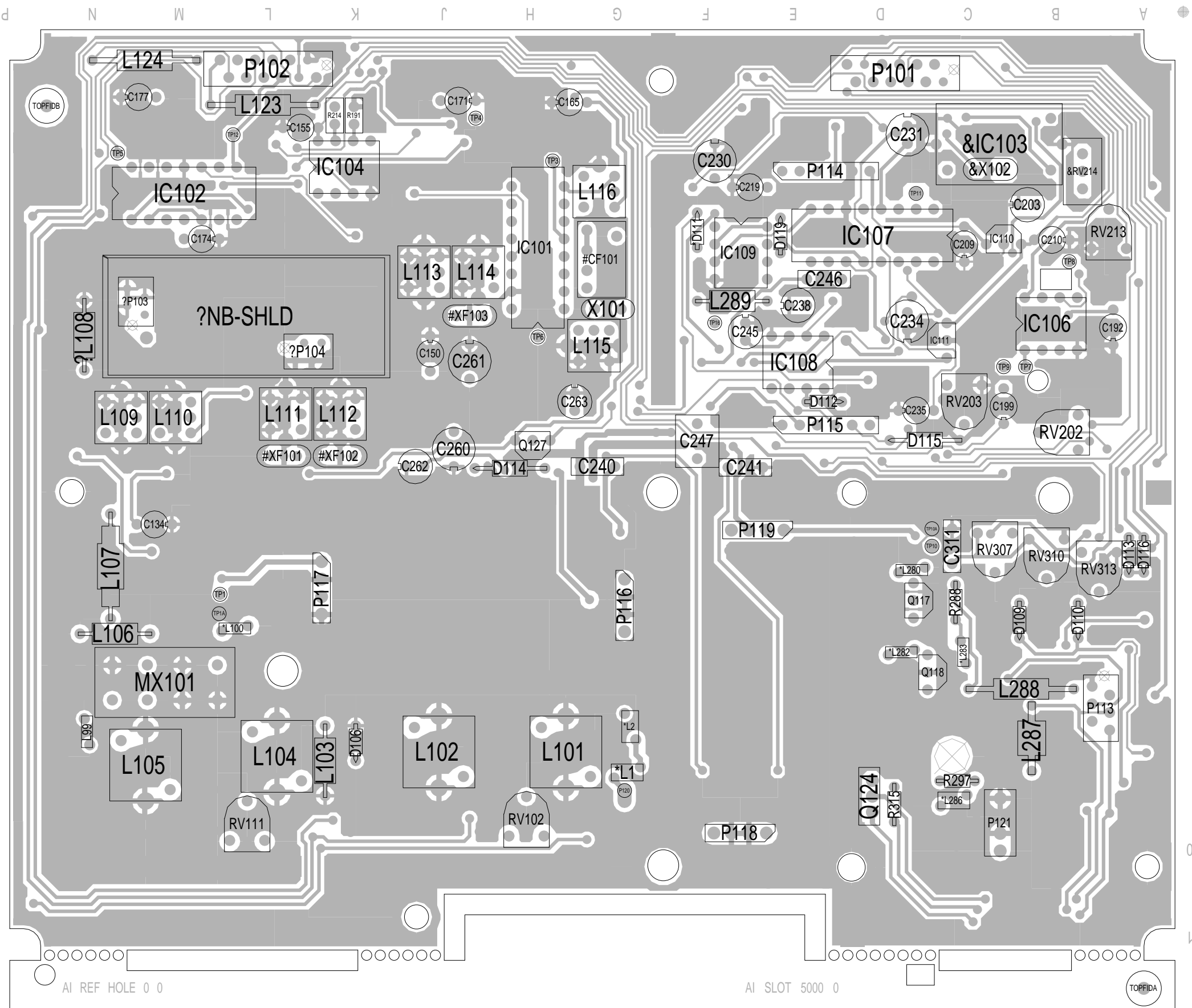
REV/ISS	AMENDMENTS	DRAWN	CHKD	D.O.	APV/D	DATE
6A	UPDATED BOARD TO 6A	YH				12-4-96
5B	ROTATED PCB	MC				
5A	CHN 9311-568, 9408-397 & OTHER MODS.	DJW	DJW	MB		22/12/94
4A	UPDATED VCOXO ETC.	MC				
3A	CHN 9106-632	MC	H.M.	M.B.		17/09/91
2D	ADDED ASSEMBLY DRAWINGS.	M.H.	S.C.	S.C.		27/06/91
2C	CHN 9105-406 & 9105-395.	MC	S.C.	H.O.		17/05/91
2B	MINOR COMPONENT VALUE CHANGES.	M.H.	S.C.	H.O.		04/02/91
2A	UPDATE TO ISSUE 2A	B.P.	H.O.	H.O.		22/08/90
1A	REMOVED R187 & R188 NTC. RELAYED VCO PCBs.	J.F.	H.O.	H.O.		14/07/90



REV/ISS	AMENDMENTS	DRAWN	CHKD	D.O.	APVD	DATE
6A	UPDATED TO ISSUE 6A		YH			12-4-96
5B	ROTATED PCB		MC			
4A	ADDED VCTCXO ETC		MC			22/12/94
3A	CHN 9106-932		MC	H.M.	M.B.	17/09/91
2A	ADDED ASSEMBLY DRAWINGS		M.H.	S.C.	S.C.	27/06/91
2C	CHN 9105-406 & 9105-395		MC	S.C.	H.O.	17/05/91
2B	MINOR COMPONENT VALUE CHANGES		M.H.	S.C.	H.O.	04/02/91
2A	UPDATE TO ISSUE 2A		B.P.	H.O.	H.O.	22/08/90
1A	REMOVED R187 & R188 NTC. RELATED VCO PCBs.		J.F.	H.O.	H.O.	14/07/90

FREQ/DUPLEX	*R240	*R243	*R253	*R296	*C281	*C284	*C285	*C287	*C288	*C293	*L280	*L282	*L283	*L285	*L286
330-380FTD	-	-	-	-	10PS	10PS	10PS	18PS	22PS	150PS	25H30	25H30	25H25	9NHT	330NHPV
400-470FTD	-	-	-	0S	4P7S	10PS	4P7S	6P8S	15PS	3P3S	15H30	15H30	15H25	-	25H30
450-520FTD	-	-	-	0S	4P7S	10PS	4P7S	6P8S	15PS	3P3S	15H30	15H30	15H25	-	25H30
330-380NFTD	39S	0S	47KS	0S	10PS	10PS	10PS	18PS	22PS	150PS	25H30	25H30	25H25	9NHT	330NHPV
400-470NFTD	39S	0S	47KS	0S	4P7S	10PS	4P7S	6P8S	15PS	3P3S	15H30	15H30	15H25	-	25H30
450-520NFTD	39S	0S	47KS	0S	4P7S	10PS	4P7S	6P8S	15PS	3P3S	15H30	15H30	15H25	-	25H30

FTD = DUPLEX FITTED
 NFTD = DUPLEX NOT FITTED
 FREQ = FREQUENCY (MHZ)



TAIT ELECTRONICS	IPN: 220-01195-06	ISS: B	ID: 1.TA	DATE: 28 May 1999
	T755 MOBILE PCB LAYOUT - TOP SIDE			

Scale: 1.6:1 ; Rotation: 0 degrees

