

22WAY SIDE ENTRY FLEXI BRD SKT
 Pins 4,6,7,14,15,19,20,21,22 are No-Connect

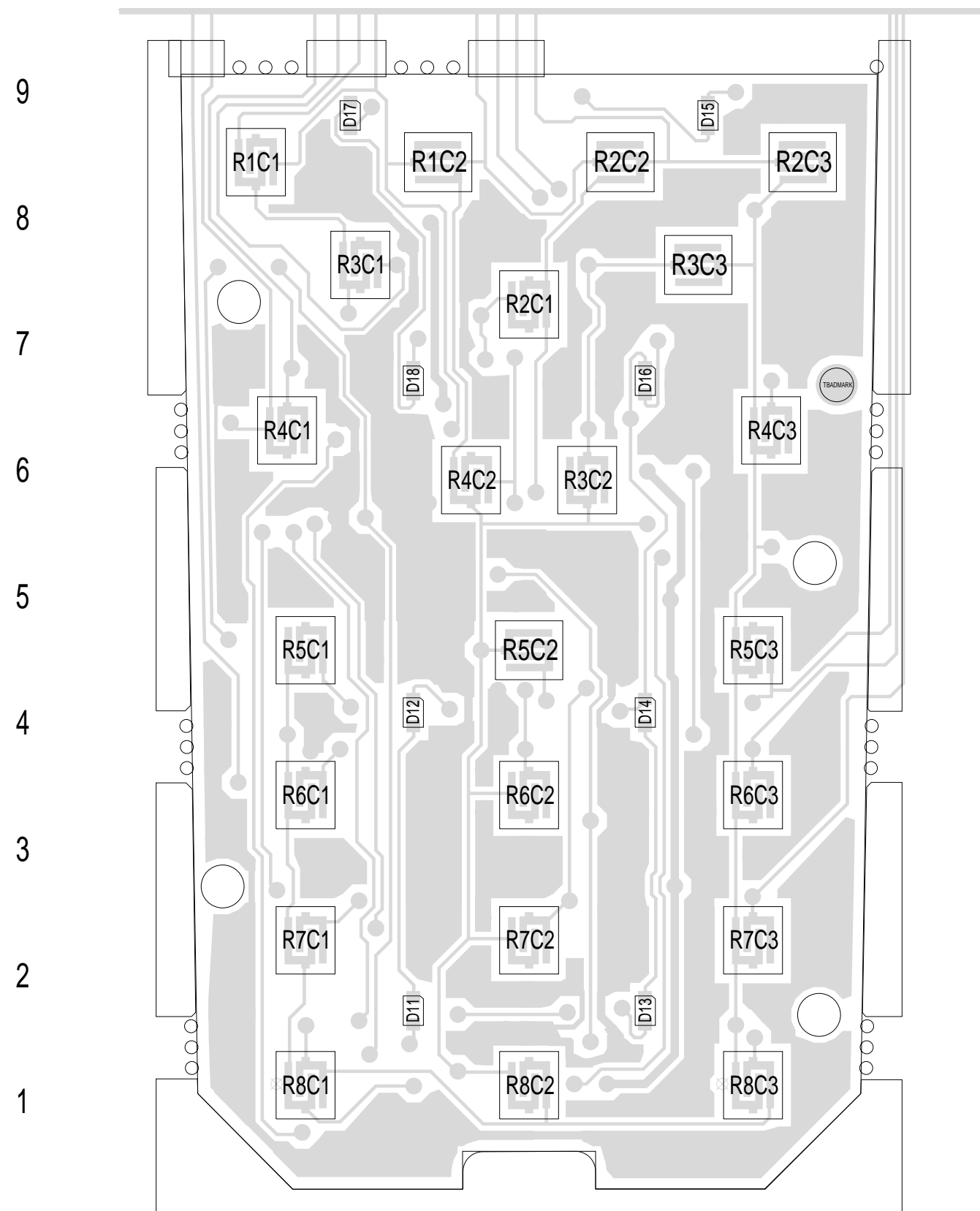
Pins 1,2 are No-Connect
 14WAY SIDE ENTRY SKT

09A	CCO NO 1412-002	BRD			14-02-00
08A	FIT 4X4K7 & 4X0603C'S & L21 CCO No.1412-001	TS			14-10-99
7B	CHANGED RES-V TO BALANCE LIGHT	BRD			10/11/98
7A	ADDED LIGHT SPREADING LEDS	BRD			28/08/98
6A	ADDED 47K RES TO RESET,R41	BRD			21/07/98
5A	ADDED BAV99W	BRD			12/06/98
4A	CHANGED RES VAL & PLACED 2 PARTS	BRD			08/05/98
3A		AD			
2A	IMPROVEMENTSMADE	AD			31/10/97
1A	DELETED EL CIRCUITRY	AD			22/08/97
REV/ISS	AMENDMENTS	DRAWN	CHKD	D.O.	APVD DATE

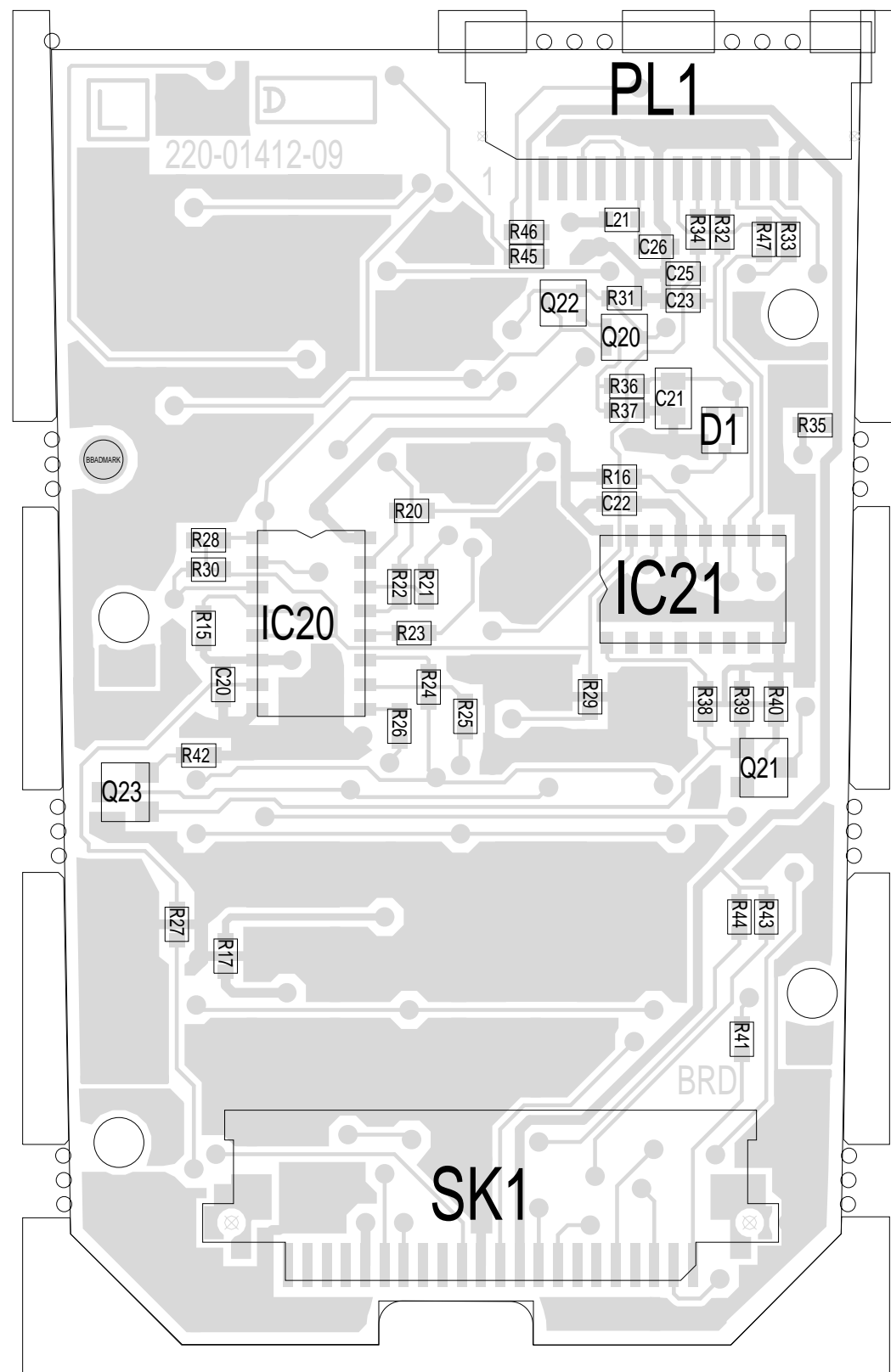
© TAIT ELECTRONICS
 ORCA KEYPAD INTERFACE
 ORCAKEYPAD

IPN: 220-01412-09
 DESIGNER: BRD
 FILE NAME: 141209a
 FILE DATE: 14-Feb-00

ISSUE: A
 ID: 2.S.C. 1
 NO.SHEETS: 1



TAIT ELECTRONICS	IPN: 220-01412-09	ISS: A	ID: 1.TA	DATE: 14 Feb 2000
KEYPAD ORCA PCB LAYOUT - TOP SIDE				



9
8
7
6
5
4
3
2
1

F E D C B A

TAIT ELECTRONICS IPN: 220-01412-09 ISS: A ID: 2.BA DATE: 14 Feb 2000
KEYPAD ORCA PCB LAYOUT - BOTTOM SIDE