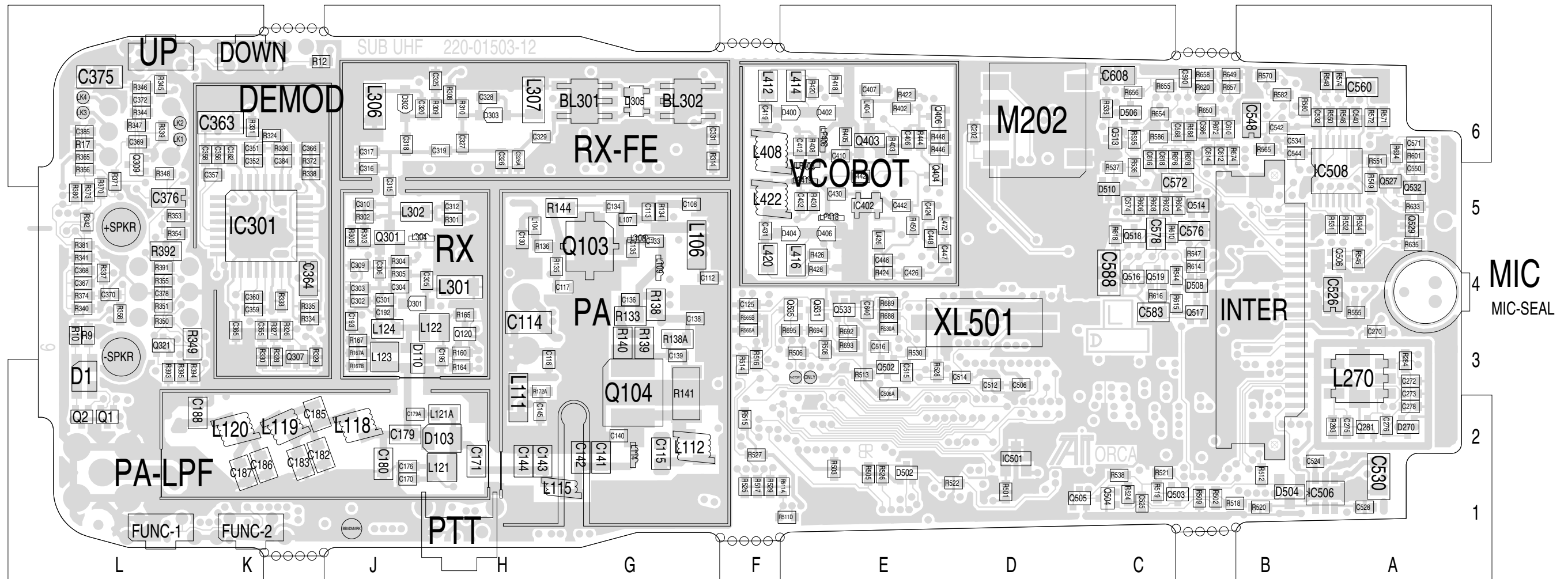
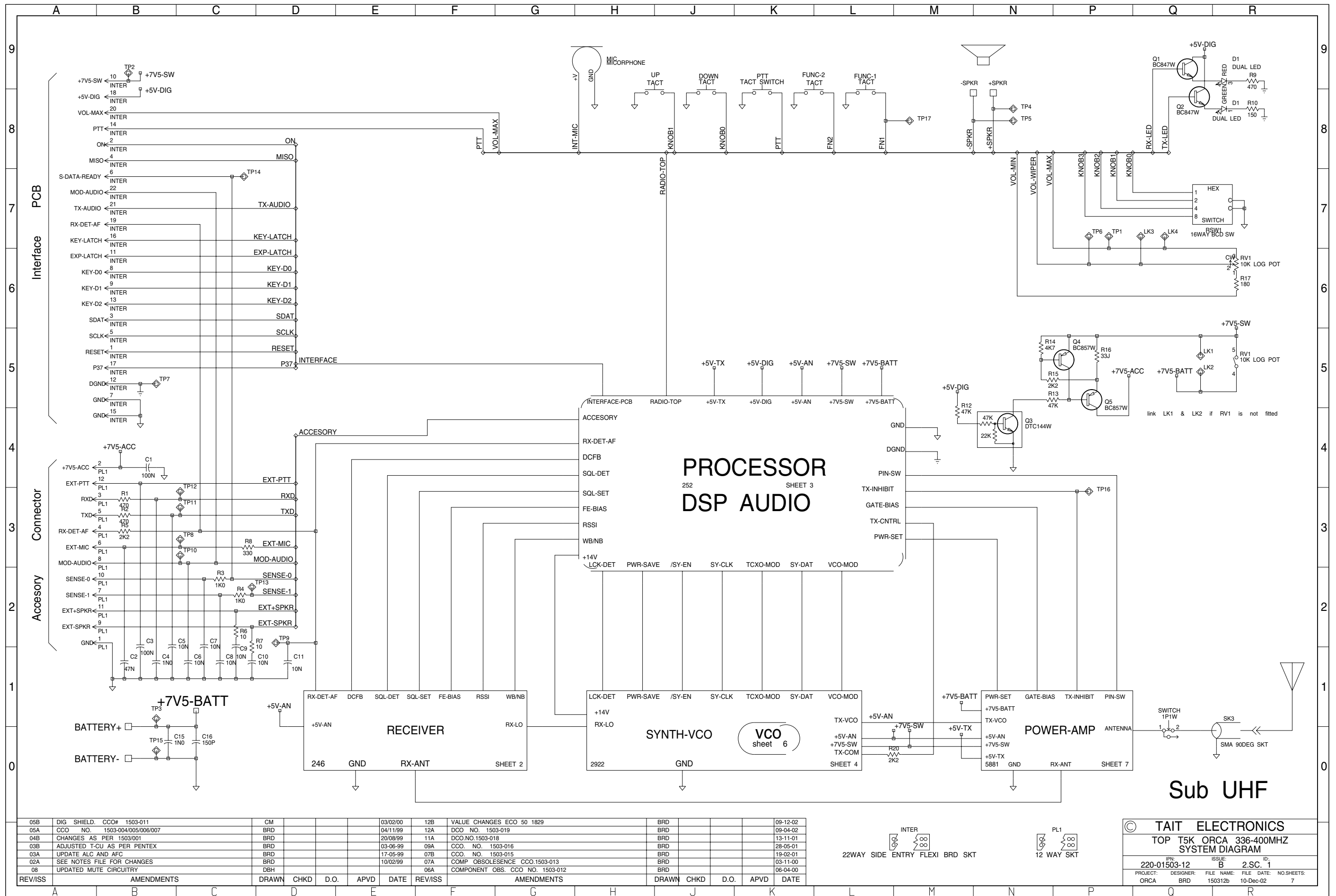


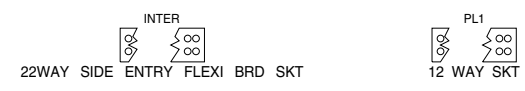
Device	PCB	Circuit	Device	PCB	Circuit	Device	PCB	Circuit	Device	PCB	Circuit	Device	PCB	Circuit	Device	PCB	Circuit
AUDIO	1:A6	3-P0	C216	1:D4	4-H7	C410	2:E6	5-E4	C640	2:E4	3-U2	IC514	1:J1	3-F7	Q205	1:D6	4-G3
BATTERY-1:H3	1-B0		C217	1:D6	4-G5	C412	2:F6	5-D4	D1	2:L3	1-R9	IC515	1:G1	3-F0	Q280	1:A3	6-D5
BATTERY+1:H4	1-B1		C218	1:E6	4-H5	C413	1:F6	5-C5	D1	2:L3	1-R8	INTER	2:B4	1-L0	Q281	2:A2	6-F5
BL301	2:G6	2-H6	C219	1:D6	4-H6	C416	1:F6	5-D6	D103	2:J2	7-N3				Q301	2:J5	2-D6
BL302	2:G6	2-J6	C220	1:E6	4-H6	C417	1:F6	5-D6	D110	2:J3	7-N1	L100	1:G5	7-B3	Q305	1:K6	2-N6
C1	1:L3	1-B4	C222	1:E6	4-H5	C418	1:F6	5-D6	D110	2:J3	7-N1	L101	1:H5	7-D3	Q305	1:K6	2-N7
C2	1:K2	1-B1	C223	1:E6	4-J6	C419	2:F6	5-E6	D205	1:E5	4-H8	L102	1:H5	7-D3	Q307	2:K3	2-D2
C3	1:K2	1-B2	C226	1:E5	4-K5	C422	1:F5	5-F5	D205	1:E5	4-H8	L103	1:H5	7-D5	Q309	2:L6	2-P2
C4	1:K2	1-B1	C229	1:G6	4-B3	C423	1:F6	5-F5	D206	1:D6	4-G3	L104	2:H5	7-F2	Q320	1:L5	2-R2
C5	1:K3	1-B2	C240	1:H6	4-B3	C424	2:E5	5-F3	D206	1:D6	4-G3	L106	2:G5	7-G4	Q321	2:L3	2-R1
C6	1:K2	1-C1	C241	1:G6	4-C3	C426	2:E4	5-F3	D206	1:D6	4-H3	L107	2:G5	7-G3	Q400	1:F6	5-D5
C7	1:K2	1-C2	C242	1:H6	4-C3	C430	2:E5	5-H4	D270	2:A2	6-G5	L108	2:G5	7-H3	Q402	1:F5	5-H5
C8	1:K3	1-C1	C246	1:E6	4-F3	C431	2:F5	5-H6	D270	2:A2	6-G4	L109	2:G4	7-H2	Q403	2:E6	5-D4
C9	1:K3	1-C2	C247	1:D6	4-G3	C432	2:F5	5-H4	D301	2:J4	2-C6	L111	2:H3	7-K4	Q404	2:E6	5-H7
C10	1:J3	1-C1	C270	2:A3	6-C4	C436	1:F5	5-H6	D302	2:J6	2-F6	L112	2:G2	7-K3	Q406	2:E6	5-G7
C11	1:K1	1-D1	C271	1:A4	6-D4	C437	1:F5	5-J6	D303	2:H6	2-G6	L114	2:G2	7-L3	Q502	2:E3	3-C3
C15	1:H4	1-B0	C272	2:A3	6-E4	C439	1:F5	5-J5	D305	2:G6	2-J6	L115	2:H1	7-L3	Q503	2:C1	3-H7
C16	1:H3	1-C0	C273	2:A3	6-E5	C440	1:F6	5-H6	D400	2:F6	5-E5	L118	2:J2	7-P3	Q504	2:C1	3-I6
C101	1:G5	7-A2	C274	1:A2	6-D5	C442	2:E5	5-K4	D402	2:E6	5-E5	L119	2:K2	7-Q3	Q505	2:D1	3-I6
C102	1:G5	7-B2	C275	2:A2	6-F5	C446	2:A2	5-J1	D404	2:F5	5-E5	L120	2:K2	7-Q3	Q506	2:A4	3-Q5
C103	1:H5	7-D3	C276	2:A2	6-G5	C447	2:E4	5-K2	D406	2:E5	5-G5	L121	2:J2	7-N3	Q513	2:C6	3-L4
C104	1:G6	7-C3	C278	2:A2	6-G4	C448	2:E5	5-K2	D502	2:E2	3-G5	L121A	2:H2	7-N2	Q514	2:C5	3-P1
C105	1:G5	7-B2	C279	1:A4	6-H4	C470	1:G6	5-B3	D502	2:E2	3-G6	L122	2:J4	7-M1	Q516	2:C4	3-R1
C105A	1:G5	7-C2	C280	1:A2	6-J4	C471	1:G6	5-B3	D504	2:B1	3-J7	L123	2:J3	7-N1	Q517	2:C4	3-S2
C107	1:H5	7-C3	C301	2:J4	2-B6	C472	1:G6	5-B3	D504	2:B1	3-J7	L124	2:J3	7-L1	Q518	2:C5	3-S0
C108	2:G5	7-H3	C302	2:J4	2-B6	C473	1:G6	5-A2	D506	2:C6	3-P6	L202	1:D6	4-F9	Q519	2:C4	3-S1
C109	1:H5	7-D2	C303	2:J4	2-C6	C475	1:G6	5-B2	D506	2:C6	3-P6	L203	1:G6	4-B3	Q522	1:J2	3-P7
C110	1:H4	7-D2	C304	2:J4	2-C6	C502	1:F4	3-D9	D507	1:G2	3-S0	L270	2:A3	6-E4	Q524	1:H2	3-P7
C111	1:H5	7-E2	C305	2:J4	2-C6	C504	1:F4	3-E9	D507	1:G2	3-S0	L301	2:H4	2-C5	Q527	2:A5	3-N0
C112	2:F4	7-H4	C306	2:J4	2-C6	C505	1:D4	3-A5	D508	2:C4	3-R2	L302	2:J5	2-D7	Q529	2:A5	3-M0
C113	2:G5	7-H3	C309	2:J4	2-C7	C506	2:D3	3-B5	D508	2:C4	3-R2	L304	2:J5	2-D6	Q530	1:A6	3-L0
C114	2:H4	7-H5	C310	2:J5	2-D7	C506A	2:E3	3-A5	D510	2:C5	3-M3	L306	2:J6	2-F5	Q531	2:F4	3-J5
C115	2:G2	7-K3	C311	1:H5	2-D8	C512	2:D3	3-C3	D510	2:C5	3-L3	L307	2:H6	2-G5	Q532	2:A5	3-N0
C116	2:H3	7-L5	C312	2:H5	2-D7	C514	2:D3	3-C3	DEM0D	2:K6	2-P0	L308	1:J6	2-K6	Q533	2:E4	3-I5
C117	2:H4	7-F4	C315	2:J5	2-E6	C515	2:E3	3-C3	DIG	1:A3	3-B0	L309	1:J6	2-K6	Q535	2:F4	3-K6
C118	1:J4	7-H8	C316	2:J6	2-E6	C516	2:E3	3-D3	DOWN	2:K6	1-J8	L310	1:K6	2-M6	R1	1:K2	1-B3
C119	1:H4	7-J8	C317	2:J6	2-E6	C518	1:D1	3-E2	FACTORY	2:F3	3-A8	L316	1:K5	2-Q6	R2	1:K3	1-B3
C120	1:H6	7-M7	C318	2:J6	2-F6	C520	1:G2	3-S0	FUNC-1	2:L1	1-L8	L318	1:K5	2-B1	R3	1:K2	1-C2
C121	1:H6	7-N7	C319	2:J6	2-F6	C524	2:B2	3-J6	FUNC-2	2:K1	1-L8	L404	2:E6	5-D4	R4	1:J2	1-C2
C122	1:J4	7-H7	C320	2:J6	2-F5	C525	2:C1	3-I7				L408	2:F6	5-D5	R5	1:K2	1-B3
C123	1:H6	7-N7	C325	2:J6	2-F7	C526	2:B4	3-K6				L410	1:F6	5-D6	R6	1:K3	1-C2
C124	1:H6	7-P7	C326	2:H6	2-G6	C528	2:A1	3-K6	IC102	1:H6	7-N7	L412	2:F6	5-E5	R7	1:J3	1-C2
C125	2:F4	7-Q8	C326A	2:H6	2-H6	C530	2:A2	3-L6	IC103	1:J3	7-H7	L414	2:F6	5-F5	R8	1:K2	1-C3
C126	1:G5	7-D4	C327	2:H6	2-G6	C532	2:B6	3-J4	IC103	1:J3	7-K7	L416	2:F4	5-F5	R9	2:L3	1-R9
C127	1:H5	7-E4	C328	2:H6	2-G5	C534	2:B6	3-K4	IC103	1:J3	7-D8	L422	2:F4	5-G5	R10	2:L3	1-R8
C128	1:H5	7-C5	C329	2:H6	2-H6	C535	1:H1	3-T1	IC103	1:J3	7-D8	L422	2:F5	5-H5	R12	2:J6	1-M4
C130	2:H5	7-F2	C331	2:F6	2-K6	C536	1:H1	3-T0	IC201	1:D5	4-E6	L424	1:F6	5-H6	R13	1:K6	1-P5
C133	2:G5	7-H2	C332	1:J6	2-K6	C540	2:A6	3-L3	IC202	1:G6	4-C3	L426	2:E5	5-J4	R14	1:L6	1-N5
C134	2:G5	7-G3	C333	1:J6	2-L6	C542	2:B6	3-H2	IC203	1:E5	4-A6	L470	1:G6	5-C3	R15	1:L6	1-P5
C135	2:G5	7-G2	C334	1:J6	2-L6	C543	1:B4	3-H2	IC203	1:E5	4-G6	L471	1:G6	5-B2	R16	1:K6	1-P5
C136	2:G4	7-J2	C335	1:J6	2-L6	C544	2:B6	3-J1	IC203	1:E5	4-J5	L472	2:E5	5-K1	R17	2:L6	1-R6
C138	2:G4	7-J3	C336	1:J6	2-M6	C545	1:A6	3-K0	IC301	2:K5	2-E2	LK1	2:L6	1-Q5	R20	1:C6	1-M0
C139	2:G3	7-K3	C337	1:K6	2-M6	C548	2:B6	3-L0	IC301	2:K5	2-G1	LK2	2:L6	1-Q5	R101	1:G5	7-B2
C140	2:G2	7-K2	C338	1:K6	2-M7	C549	1:A6	3-M0	IC301	2:K5	2-B2	LK3	2:L6	1-Q7	R102	1:G5	7-A2
C141	2:G2	7-L2	C339	1:K6	2-N6	C550	2:A6	3-L0	IC302	1:L5	2-N2	LK4	2:L6	1-Q7	R103	1:G5	7-B2
C142	2:G2	7-L2	C340	1:K6	2-M7	C551	1:A6	3-M0	IC302	1:L5	2-N1	LP405	2:F6	5-E5	R104	1:G5	7-B3
C143	2:H2	7-L2	C342	1:K6	2-P6	C553	1:A5	3-M0	IC302	1:L5	2-L2	LP406	2:F6	5-E5	R106	1:H5	7-C2
C144	2:H2	7-M2	C343	1:K6	2-P6	C559	1:C5	3-L1	IC302	1:L5	2-M1	LP418	2:E5	5-H5	R107	1:G5	7-B2
C145	2:H2	7-K4	C344	1:K5	2-Q6	C560	2:A6	3-M1	IC302	1:L5	2-Q3	LP419	2:F5	5-H5	R108	1:G5	7-C2
C146	1:G4	7-M4	C345	1:K5	2-Q6	C561	1:C6	3-N1	IC402	2:E5	5-H3				R109	1:H5	7-D2
C150	1:G3	7-J5	C346	1:K5	2-Q6	C566	2:C6	3-N1	IC403	1:G6	5-D2	M202	2:D6	4-C6	R109A	1:H5	7-D2
C170	2:J2	7-N3	C350	1:J5	2-B1	C567	1:C5	3-N2	IC501	2:D2	3-A9	MIC	2:A4	1-H9	R110	1:H5	7-D3
C171	2:H2	7-M3	C351	2:K6	2-B1	C568	2:C6	3-N2	IC502	1:F2	3-D7	MIC-SEAL	2:A4	6-F0	R111	1:G6	7-C3
C176	2:J2	7-M3	C352	2:K6	2-B2	C569	1:C5	3-O1	IC503-FB	1:C2	3-A0	ONLY	2:F3	3-A8	R112	1:H5	7-D5
C179	2:J2	7-P3	C355	2:K3	2-E2	C571	2:A6	3-O0	IC503-FA	1:E4	3-A0				R113	1:H5	7-E2
C179A	2:J2	7-N2	C356	2:K6	2-E3	C572	2:C5	3-P1	IC503	1:D3	3-A4				R114	1:H5	7-E2
C180	2:J2	7-P2	C357	2:K6	2-E3	C573	1:G1	3-R1	IC503	1:D3	3-D3	PA	2:F3	7-H1	R115	1:H5	7-E2
C182	2:J2	7-P2	C358	2:K6	2-F3	C574	2:C5	3-P1	IC504-FB	1:C1	3-A0	PA-EX	1:F6	7-A1	R116	1:G5	7-D4
C183	2:K2	7-P2	C359	2:K4	2-G2	C576	2:C5	3-P1	IC504-FA	1:D3	3-A1	PA-LPF	2:K1	7-Q1	R119	1:J3	7-K7
C185	2:J2	7-Q3	C360	2:K4	2-G2	C578	2:C5	3-Q1	IC504	1:C3	3-D1	PL1	1:K2	1-N0	R120	1:J4	7-H8
C186	2:K2	7-Q2	C362	2:K6	2-K3	C579	1:C5	3-N0	IC506	2:B1	3-K7	PTT	2:H1	1-K8	R121	1:G4	7-L4
C187	2:K2	7-Q2	C363	2:K6	2-K3	C581	1:G1	3-Q0	IC507	1:B6	3-Q3				R121A	1:G4	7-L4
C188	2:K2	7-R2	C364	2:K4	2-K1	C582	1:A4	3-R1	IC507	1:B6	3-L2	Q1	2:L2	1-Q9	R121B	1:G4	7-L4
C192	2:J4	7-L1	C365	2:K3	2-G3	C583	2:C4	3-S2	IC507	1:B6	3-H2	Q2	2:L2	1-Q8	R122	1:H3	7-L7
C193	2:J4	7-L0	C366	2:K6	2-L2	C588	2:C4	3-S0	IC508	2:A6	3-J3	Q3	1:K6	1-N4	R124	1:J3	7-L7
C195	2:J3	7-M0	C367	2:L4	2-M2	C590	2:C6	3-T0	IC509	1:B2	3-I0	Q4	1:L6	1-P5	R129	1:H6	7-P8
C200	1:E5	4-B6	C368	2:L4	2-M2	C593	1:J2	3-P8	IC510	1:B5	3-J0	Q5	1:K6	1-P5	R130	1:J3	7-K7
C202	2:D6	4-C7	C369	2:L6	2-N2	C594	1:H2	3-P8	IC511	1:C6	3-R6	Q101	1:G5	7-B2	R131	1:H6	7-P7
C208	1:D5	4-E8	C370	2:L4	2-M2	C595	1:H2	3-P7	IC511	1:C6	3-N1	Q102	1:G5	7-D2	R132	1:H6	7-P7
C209	1:D5	4-E8	C372	2:L6	2-P2	C596	1:K1	3-Q8	IC511	1:C6	3-O6	Q103	2:G5				

Device	PCB	Circuit	Device	PCB	Circuit	Device	PCB	Circuit	Device	PCB	Circuit	Device	PCB	Circuit	Device	PCB	Circuit
R140	2:G3	7-J2	R334	2:K4	2-J0	R523	1:D1	3-C1	R640	1:J1	3-P7						
R141	2:G3	7-K3	R335	2:K4	2-J0	R524	2:C1	3-H7	R641	1:H2	3-O7						
R144	2:H5	7-G3	R336	2:K6	2-K0	R525	2:F1	3-H9	R642	1:J2	3-O7						
R153	1:J4	7-J8	R337	2:L4	2-M2	R526	2:E2	3-H6	R643	1:J1	3-P8						
R159	1:H3	7-J6	R338	2:K6	2-L2	R527	2:F2	3-H9	R644	1:J2	3-P8						
R160	2:H3	7-L0	R339	2:L6	2-P2	R528	2:E3	3-C3	R646	1:K1	3-Q8						
R164	2:H3	7-L0	R340	2:L4	2-M2	R529	2:F1	3-H9	R647	1:K1	3-Q8						
R165	2:H4	7-M0	R341	2:L4	2-M1	R530	2:E3	3-D3	R648	1:K1	3-Q8						
R167	2:J3	7-N0	R342	2:L5	2-N2	R530A	2:E3	3-D3	R649	2:B6	3-P6						
R167A	2:J3	7-P0	R344	2:L6	2-P2	R531	2:B5	3-P3	R650	2:C6	3-R6						
R167B	2:J3	7-P0	R345	2:L6	2-P3	R532	2:A5	3-K3	R653	1:C6	3-O6						
R168	1:H3	7-J6	R346	2:L6	2-P3	R533	2:C6	3-L4	R654	2:C6	3-P6						
R169	1:J4	7-J7	R347	2:L6	2-P2	R534	2:A5	3-K3	R655	2:C6	3-P6						
R170	1:J3	7-K6	R348	2:L6	2-P2	R535	2:C6	3-L4	R656	2:C6	3-P6						
R171	1:J3	7-K7	R349	2:K3	2-R1	R536	2:C6	3-L3	R657	2:B6	3-Q6						
R172	1:G3	7-J5	R350	2:L4	2-R1	R537	2:C6	3-L3	R658	2:C6	3-Q6						
R172A	2:H3	7-K4	R351	2:L4	2-Q1	R538	2:C2	3-I7	R672	2:B6	3-R6						
R173	1:J3	7-K6	R352	1:L5	2-Q1	R539	1:H2	3-T1	R674	2:B6	3-S6						
R174	1:J4	7-H6	R353	2:L5	2-M1	R540	1:H2	3-T0	R676	2:C6	3-S6						
R175	1:H4	7-J8	R354	2:L5	2-M1	R541	1:G1	3-S1	R678	2:C6	3-S6						
R176	1:H4	7-J8	R355	2:L4	2-Q3	R542	1:G1	3-S0	R679	1:K1	3-S6						
R178	1:H4	7-J8	R356	2:L6	2-R3	R543	1:G2	3-R0	R685	1:D4	3-V3						
R182	1:J4	7-K8	R358	2:L4	2-L1	R544	2:C4	3-Q2	R685A	1:E4	3-U3						
R183	1:J4	7-K8	R365	2:L6	2-N1	R545	2:A4	3-R5	R686	1:D4	3-V3						
R189	1:G5	7-F3	R370	2:L5	2-M2	R546	2:A6	3-M3	R686A	1:E4	3-U3						
R190	1:G6	7-F6	R371	2:L5	2-N2	R547	2:C4	3-Q2	R687	1:D4	3-V2						
R191	1:G4	7-F5	R372	2:K6	2-L2	R548	2:B6	3-L3	R688	2:E4	3-U2						
R192	1:F5	7-F3	R373	2:L5	2-N2	R549	2:A5	3-K3	R689	2:E4	3-V2						
R193	1:G5	7-F4	R374	2:L4	2-M2	R550	2:B6	3-K3	R690	1:C3	3-V5						
R194	1:G5	7-F5	R380	2:L5	2-L3	R551	2:A6	3-K3	R691	1:E4	3-V5						
R195	1:G4	7-G5	R381	2:L5	2-L2	R552	1:C2	3-G1	R692	2:E3	3-J5						
R196	1:G4	7-G5	R390	1:L5	2-R2	R554	1:C2	3-H1	R693	2:E3	3-J5						
R202	1:E5	4-A6	R391	2:L4	2-R2	R555	2:A4	3-J7	R694	2:F3	3-J6						
R203	1:E5	4-A6	R392	2:L5	2-R2	R556	1:C2	3-G1	R695	2:F3	3-K6						
R204	1:E5	4-B7	R393	2:L3	2-R1	R558	1:B4	3-H1	RSW1	1:L4	1-R7						
R205	1:E4	4-B7	R394	2:K3	2-R2	R560	1:B4	3-G1	RV1	1:L6	1-R5						
R219	1:D6	4-F6	R395	2:L3	2-R1	R561	1:B4	3-H1	RV1	1:L6	1-R6						
R220	1:E5	4-F6	R402	2:E6	5-C4	R562	1:B4	3-G1	RX	2:J5	2-B4						
R221	1:D5	4-D9	R403	2:E6	5-D4	R564	1:B4	3-H1	RX-FE	2:F6	2-D4						
R223	1:D5	4-E8	R404	1:F6	5-D5	R565	2:B6	3-J1	RX-IF	1:K5	2-K4						
R224	1:D6	4-F8	R405	2:E6	5-D3	R565A	2:F3	3-J2									
R225	1:D6	4-F8	R406	1:F6	5-D5	R565B	2:F4	3-J2	SEAL	1:H3	6-G0						
R227	1:E5	4-G5	R408	2:F6	5-D5	R565D	1:F4	3-J1	SK3	1:L2	1-R0						
R228	1:D6	4-G5	R410	1:F6	5-C6	R566	1:B2	3-I2	-SPKR	2:L3	1-N8						
R229	1:D6	4-G5	R412	1:F6	5-D6	R568	1:A4	3-J2	+SPKR	2:L5	1-N8						
R230	1:D6	4-G5	R416	1:F6	5-D7	R570	2:B6	3-L1	SWITCH	1:L2	1-Q0						
R234	1:E5	4-H7	R418	2:E6	5-E5	R571	2:A6	3-L1	SYNTH	1:E5	4-A5						
R236	1:E6	4-H6	R420	2:F6	5-F5	R572	2:A6	3-L1									
R237	1:E6	4-H5	R422	2:E6	5-E3	R573	1:G1	3-R1	TP1	1:L6	1-P7						
R238	1:E6	4-H6	R424	2:E4	5-G3	R574	2:A6	3-L1	TP2	1:L6	1-B9						
R240	1:E5	4-J5	R426	2:F4	5-F5	R575	1:A6	3-L0	TP3	1:L6	1-B1						
R242	1:G6	4-B2	R428	2:F4	5-G5	R576	1:C6	3-M1	TP4	1:L6	1-N8						
R245	1:E6	4-F3	R430	2:F5	5-H5	R577	1:A6	3-M0	TP5	1:L3	1-N8						
R246	1:D6	4-G3	R434	1:F5	5-H5	R578	1:A6	3-M0	TP6	1:L2	1-P7						
R270	1:A4	6-D4	R436	1:F5	5-J5	R579	1:C6	3-M0	TP7	1:A4	1-B5						
R281	1:A4	6-D4	R438	1:F5	5-J6	R580	2:B6	3-L1	TP8	1:L1	1-C3						
R282	1:A3	6-D5	R440	1:F6	5-H6	R581	1:C5	3-N0	TP9	1:L3	1-D2						
R283	2:B2	6-F5	R442	2:E5	5-H7	R582	2:B6	3-L1	TP10	1:C4	1-C3						
R284	2:A3	6-H5	R444	2:E6	5-H7	R583	1:C6	3-N1	TP11	1:H2	1-C3						
R285	1:A3	6-H5	R446	2:E6	5-H7	R584	1:A5	3-M0	TP12	1:H1	1-C3						
R286	1:A3	6-H5	R448	2:E6	5-H7	R585	1:C5	3-M2	TP13	1:H1	1-C2						
R301	2:H5	2-D8	R450	2:E5	5-J4	R586	2:C6	3-N2	TP14	1:L1	1-C7						
R302	2:J5	2-D7	R470	1:G6	5-B3	R587	1:C5	3-O1	TP15	1:H2	1-B0						
R303	2:J5	2-D6	R501	2:D1	3-B9	R588	2:C6	3-N2	TP16	1:D4	1-P3						
R304	2:J4	2-C7	R502	2:B1	3-I7	R589	1:C6	3-O1	TP17	1:L1	1-M8						
R305	2:J4	2-C7	R503	2:E2	3-G9	R590	1:C6	3-O2	UP	2:L6	1-J8						
R306	2:J5	2-D6	R504	1:E1	3-C9	R591	1:C5	3-O1									
R308	2:H6	2-F7	R505	2:E2	3-G9	R594	1:C6	3-L0	VCOBOT	2:F6	5-G1						
R309	2:J6	2-F6	R506	2:F3	3-A8	R601	2:A6	3-O1	VCOTOP	1:E5	5-F1						
R310	2:H6	2-G6	R507	1:E1	3-D9	R602	2:C5	3-P1									
R314	2:F6	2-K6	R508	2:F3	3-D9	R603	1:A6	3-O0	XF301	1:J6	2-L6						
R315	1:K6	2-M8	R509	2:C1	3-H7	R604	2:C5	3-P1	XF302	1:K5	2-P6						
R316	1:K6	2-M7	R510	1:F4	3-E9	R606	2:C5	3-P1	XF303	1:K4	2-C2						
R317	1:K6	2-M7	R511A	2:F1	3-G8	R608	2:C5	3-Q1	XF304	1:K4	2-F2						
R318	1:K6	2-M7	R511B	1:F4	3-I6	R610	2:C5	3-Q1	XL301	1:J5	2-B1						
R319	1:K6	2-N6	R511C	1:F4	3-K6	R614	2:C4	3-R2	XL501	2:D4	3-C3						
R320	1:J6	2-K7	R511D	2:F1	3-G8	R615	2:C4	3-S2									
R321	1:K6	2-N7	R512	2:B2	3-J7	R616	2:C4	3-S1									
R323	1:K5	2-B1	R513	2:E3	3-D6	R617	1:C6	3-N2									
R324	2:K6	2-C1	R514	2:F3	3-H7	R618	2:C5	3-S0									
R325	1:J5	2-B1	R515	2:F2	3-G9	R620	2:C6	3-T0									
R326	2:K3	2-C2	R516	2:F3	3-H7	R630	1:A6	3-K0									
R327	2:K3	2-D2	R517	2:F1	3-G9	R632	1:A5	3-L0									
R328	2:K3	2-D2	R518	2:B1	3-H6	R633	2:A5	3-M0									
R329	2:K3	2-D3	R519	2:C1	3-I7	R634	2:A6	3-N0									
R330	2:K3	2-E2	R520	2:B1	3-J6	R635	2:A5	3-L0									
R331	2:K6	2-K3	R521	2:C2	3-I7	R636	1:A6	3-K0									
R333	2:K4	2-J0	R522	2:D1	3-H6	R639	1:H1	3-O7									

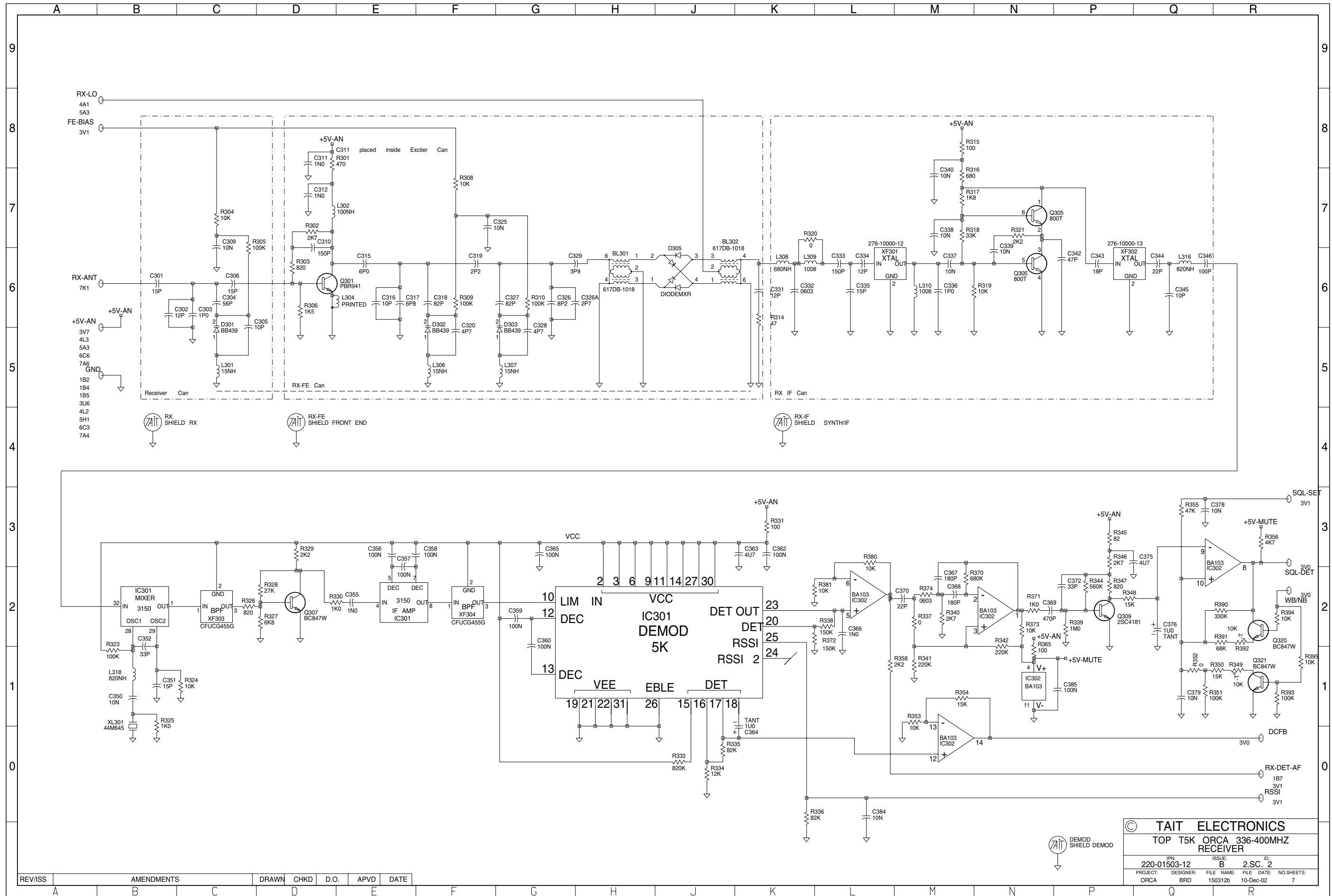




REV/ISS	AMENDMENTS	DRAWN	CHKD	D.O.	APVD	DATE	REV/ISS	AMENDMENTS	DRAWN	CHKD	D.O.	APVD	DATE
05B	DIG SHIELD. CCO# 1503-011	CM				03/02/00	12B	VALUE CHANGES ECO 50 1829	BRD				09-12-02
05A	CCO NO. 1503-004/005/006/007	BRD				04/11/99	12A	DCO NO. 1503-019	BRD				09-04-02
04B	CHANGES AS PER 1503/001	BRD				20/08/99	11A	DCO.NO.1503-018	BRD				13-11-01
03B	ADJUSTED T-CU AS PER PENTEX	BRD				03-06-99	09A	CCO. NO. 1503-016	BRD				28-05-01
03A	UPDATE ALC AND AFC	BRD				17-05-99	07B	CCO. NO. 1503-015	BRD				19-02-01
02A	SEE NOTES FILE FOR CHANGES	BRD				10/02/99	07A	COMP OBSOLESCENCE CCO.1503-013	BRD				03-11-00
08	UPDATED MUTE CIRCUITRY	DBH					06A	COMPONENT OBS. CCO NO. 1503-012	BRD				06-04-00



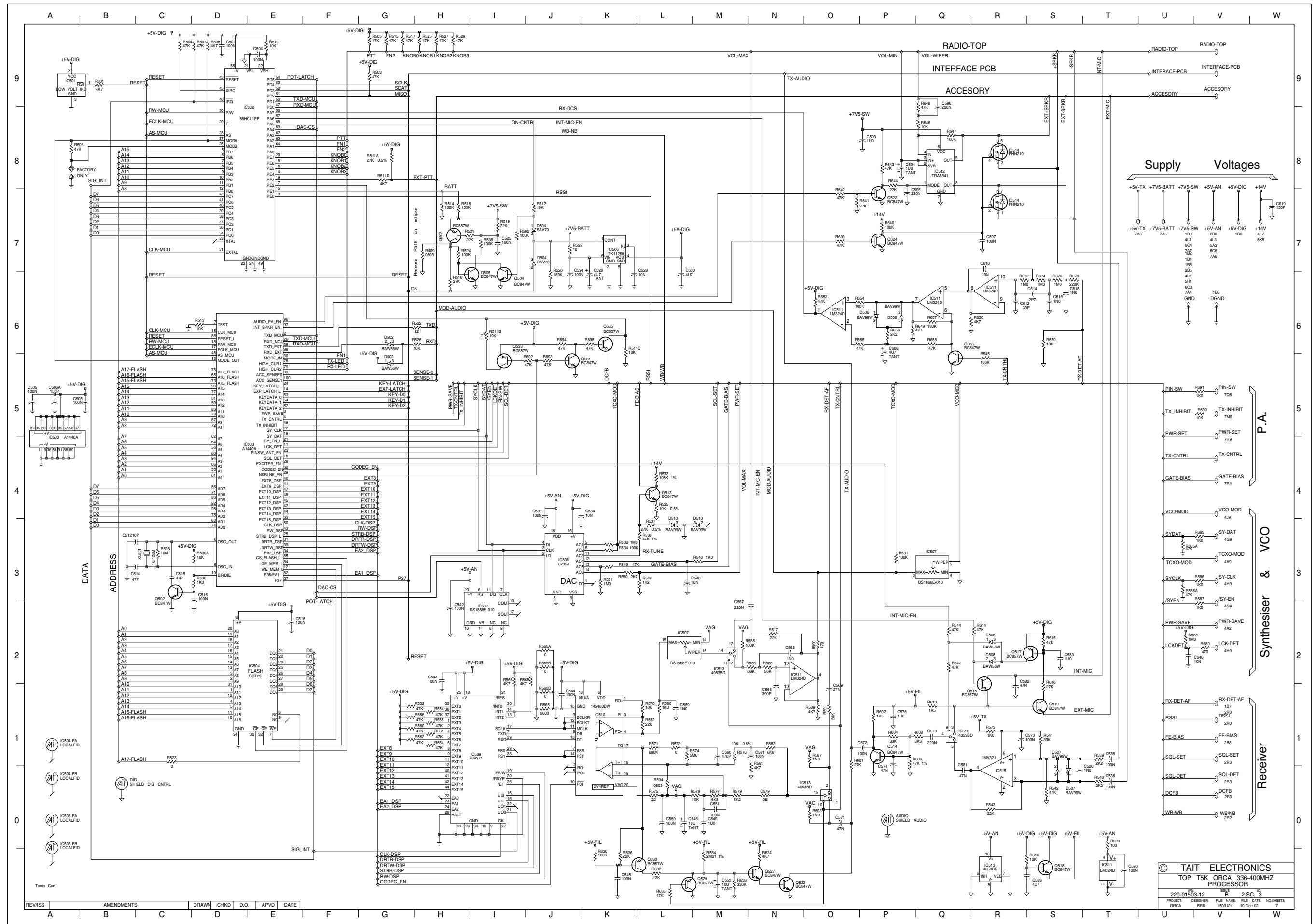
© TAIT ELECTRONICS			
TOP T5K ORCA 336-400MHZ SYSTEM DIAGRAM			
IPN: 220-01503-12	ISSUE: B	ID: 2.S.C. 1	
PROJECT: ORCA	DESIGNER: BRD	FILE NAME: 150312b	FILE DATE: 10-Dec-02
			NO.SHEETS: 7



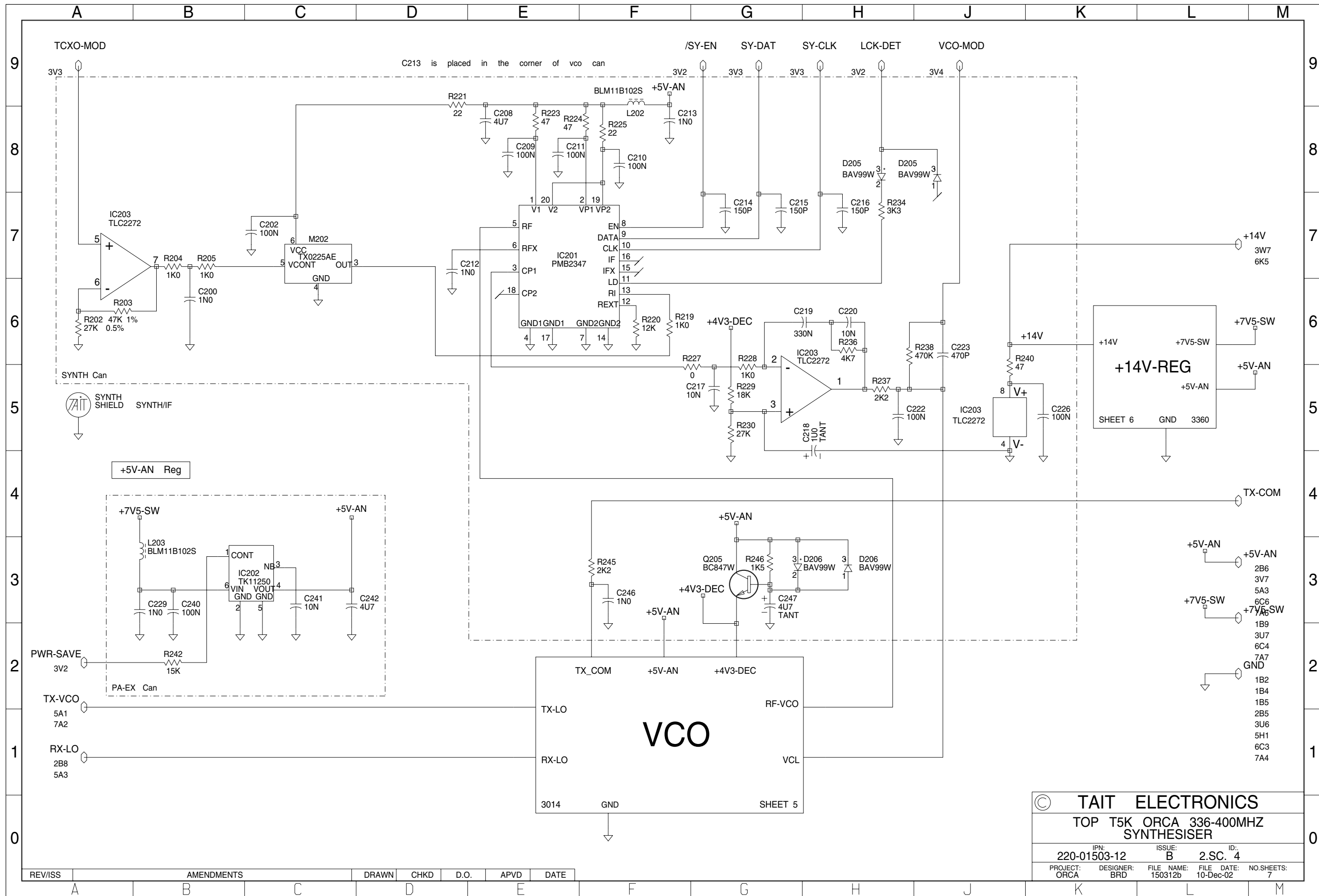
REV/ISS	AMENDMENTS	DRAWN	CHKD	D.O.	APVD	DATE
A						

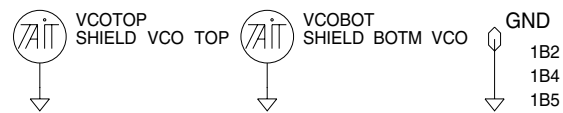
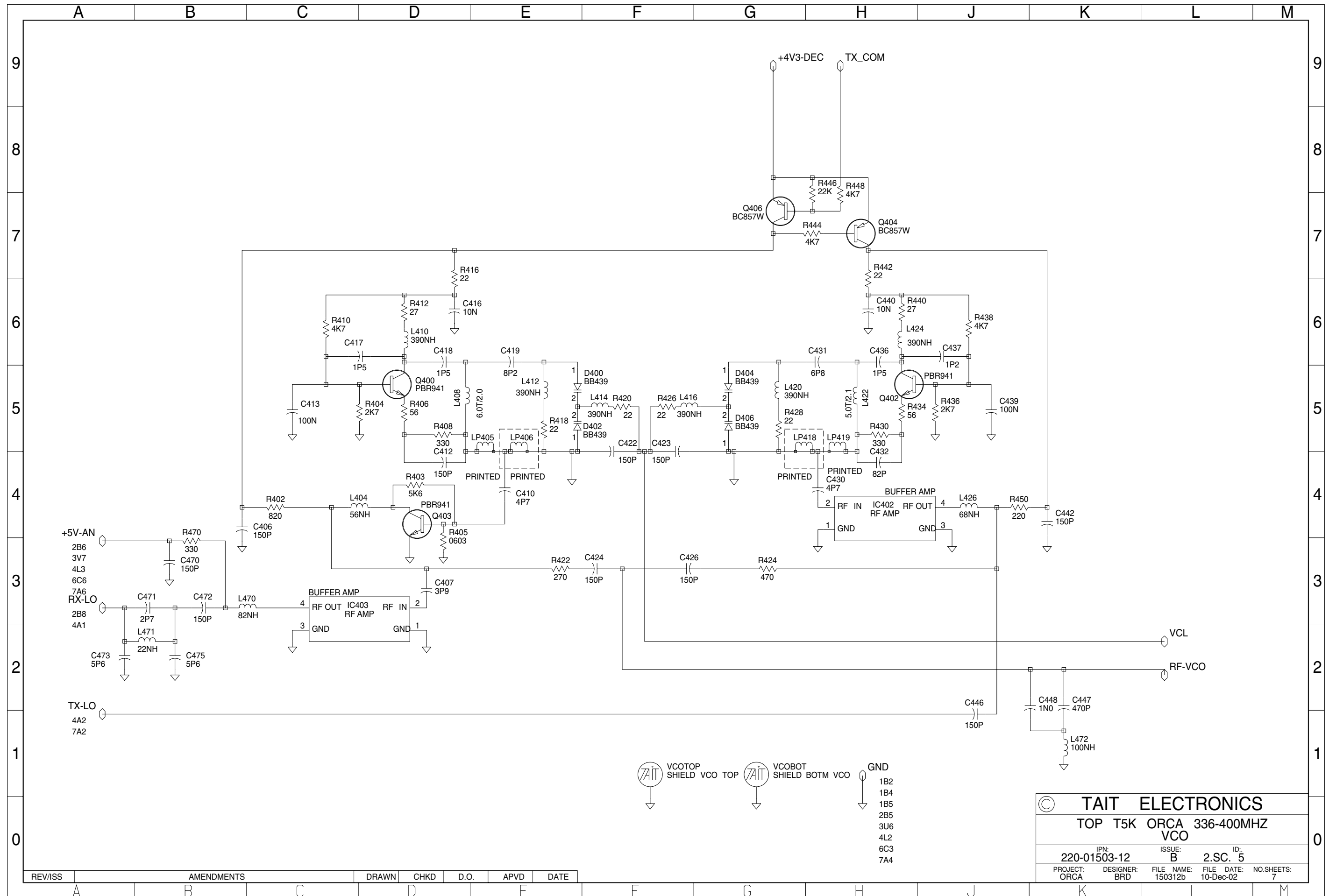
© TAIT ELECTRONICS
TOP T5K ORCA 336-400MHZ RECEIVER

IPN: 220-01503-12	ISSUE: B	ID: 2.S.C. 2
PROJECT: ORCA	DESIGNER: BRD	FILE NAME: 150312b
		FILE DATE: 10-Dec-02
		NO.SHEETS: 7



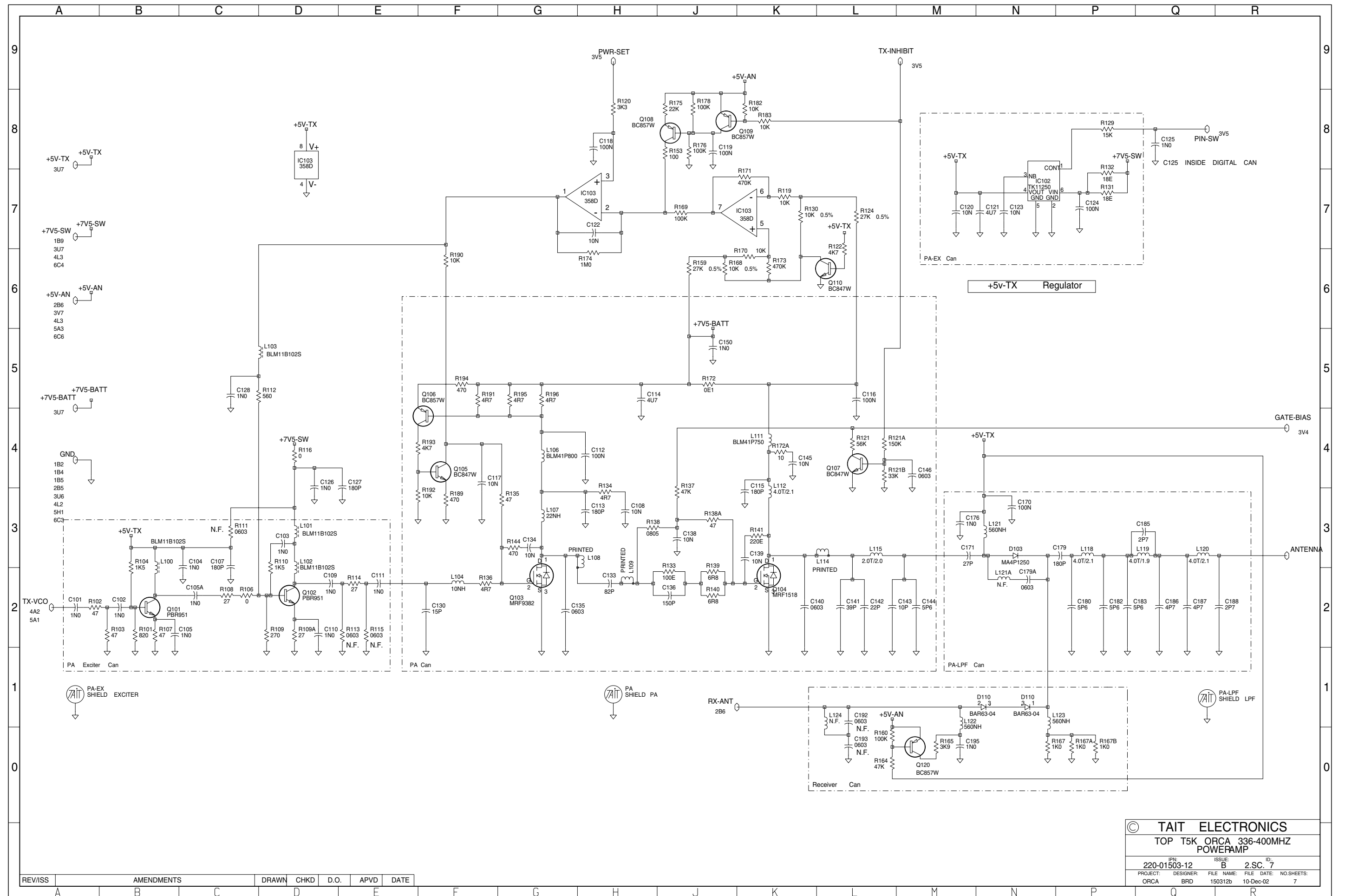
© TAIT ELECTRONICS
 TOP T5K ORCA 336-400MHZ
 PROCESSOR
 220-01503-12
 PROJECT: ORCA BRD 190312B 10-Dec-02





© TAIT ELECTRONICS				
TOP T5K ORCA 336-400MHZ VCO				
IPN:	220-01503-12	ISSUE:	B	ID:
			2.SC.	5
PROJECT:	ORCA	DESIGNER:	BRD	FILE NAME:
				150312b
		FILE DATE:	10-Dec-02	NO. SHEETS:
				7

REV/ISS	AMENDMENTS	DRAWN	CHKD	D.O.	APVD	DATE



© TAIT ELECTRONICS			
TOP T5K_ORCA_336-400MHZ POWERAMP			
IPN: 220-01503-12	ISSUE: B	2.SC. 7	ID:
PROJECT: ORCA	DESIGNER: BRD	FILE NAME: 150312b	FILE DATE: 10-Dec-02
		NO. SHEETS: 7	

REV/ISS	AMENDMENTS	DRAWN	CHKD	D.O.	APVD	DATE
A						