

Meter Mounting Equipment

Northern Indiana Public Service Co.



MILBANK®





Charles A. Milbank
1879-1966



Bill Martin



Robert F. Waldrop,
1922-2002



Robert F. Waldrop, II
Chairman



Katrina Waldrop Henke
Vice Chairman

Milbank—Quality Metering Products for over 75 Years

Milbank Manufacturing Company was established in 1927 by Charles A. Milbank. Originally, the company manufactured high voltage switches; however, by 1941 Milbank devoted itself primarily to the manufacture of sheet metal enclosures and related equipment for the electrical generation and distribution industry. Today we are an industry leader in the manufacture of electrical meter sockets. Through a national network of manufacturer's representatives we provide wholesale electrical distributors with quality electrical products for the utility, contractor, industrial and OEM markets.

As the meter standards have changed, Milbank has been successful in adapting its product line to these changes. Our full scale engineering department designs products to meet customer specifications and satisfy all utility requirements.

Milbank's employee base of over 1,000 with our five manufacturing facilities comprising almost 550,000 square feet gives us the flexibility to schedule, produce, and ship orders quickly. Currently, Milbank manufactures over 10,000 different catalog items, and this list continues to grow. Our unique product offering includes: Residential & Commercial Meter Sockets; Residential & Commercial Meter Pedestals; RV/MH Power Outlets, Pedestals, and Transformers; Commercial & Industrial Electrical Enclosures; Circuit Breakers; Disconnects & Safety Switches; Safety Sockets; Utility & Residential Secondary Pedestals; Hubs and related accessories. If you don't find a unit in this catalog to service your needs, send us your specifications and we will be happy to work with you.

Our success has come from a loyal customer base that can rely on us to build quality products at

a fair price in a timely manner. Our willingness and ability to design and produce new products to meet our customer demands is an important factor to remain competitive in today's electrical market.

Milbank has been serving the electric utility & wholesale distribution industries for over 75 years with innovative, quality engineered products. So remember us for all of your meter mounting and related requirements, and we will be happy to serve you as we have in the past—with dependable service and quality products!

We take great pride in being one of the few family-owned businesses left in our industry. We are a third generation run business and truly believe that...

***FAMILY MAKES A
DIFFERENCE!***

CATALOG NUMBER LOGIC	4
DISCONNECTS	
AIR CONDITIONER DISCONNECT	5
AIR CONDITIONER DISCONNECT WITH GFCI RECEPTACLE	6
HOT TUB DISCONNECT	6
SINGLE POSITION (HORN BYPASS)	
125 AMP-4 TERMINAL-RINGLESS-600 VAC	7
200 AMP-4 TERMINAL-RINGLESS-600 VAC	8
200 AMP-4 TERMINAL-SIDE WIREWAY-RINGLESS-600 VAC	8
SINGLE POSITION (LEVER BYPASS)	
200 AMP-5 & 7 TERMINAL-HEAVY DUTY-RINGLESS-600 VAC	9
320 AMP-4 TERMINAL-HEAVY DUTY-RINGLESS-600 VAC	10
320 AMP CONTINUOUS-7 TERMINAL-HEAVY DUTY-RINGLESS-600 VAC	11
MULTIPLE POSITION	
100, 150 & 200 AMP / POSITION-4 TERMINAL-HORIZONTAL GANGS-RINGLESS-300 VAC	12
200 AMP / POSITION-7 TERMINAL-HORIZONTAL GANGS-HEAVY DUTY-RINGLESS-600 VAC	13
CONDOMINIUM METERING BANKS	
125 & 200 AMP / POSITION-VERTICAL & RECTANGULAR-120 / 240 VAC	14-15
PEDESTALS	
100 & 200 AMP-4 TERMINAL-RESIDENTIAL-SINGLE OR DOUBLE POSITION-RINGLESS-600 VAC	16
100 / 200 AMP-5 & 7 TERMINAL-LEVER BYPASS-HEAVY DUTY-600 VAC	17
METER-MAIN / CIRCUIT BREAKERS	
100 / 200 AMP-4 TERMINAL-CB MAIN DISCONNECT-RINGLESS-120 / 240 VAC	18
100 / 200 AMP-4 TERMINAL-METER PEDESTAL-RINGLESS-PARALLEL MAIN-120 / 240 VAC	19
320 AMP-4 TERMINAL-WITH BREAKER-LEVER BYPASS-HEAVY DUTY-RINGLESS-120 / 240 VAC	20
320 AMP-4 TERMINAL-NO BREAKER PROVISION-LEVER BYPASS-HEAVY DUTY-RINGLESS-600 VAC	20
RV / MOBILE HOME PEDESTAL	
200 AMP-4 TERMINAL-RINGLESS-120 / 240 VAC	21
MISCELLANEOUS	
ACCESSORIES	22-23
CONDUIT AND AMPACITY INFORMATION	24
ENERGIZATION OF ELECTRICAL EQUIPMENT	25
MATERIALS AND FINISHES	26
WATTHOUR METERS	27
OTHER MILBANK PRODUCTS	28
INDEX	29

Catalog Number Logic

U = UL Listed

S = Non-UL Listed

UAP = UL / Alum / Painted

**Milbank
Drawing
Number**

TG = Triplex Ground

QG = Quadplex Ground

**KK = Horn By-Pass
Provision**

**Specific Utility
Designation**

Barrel Lock

U7040-RL-TG-KK-5T9-BL-AUT

HUB OPENINGS / CLOSING PLATES

O	Plain Top	WL	1"	For -RL Opening
RL	Small Hub Opening	YL	1¼"	For -RL Opening
R	Large Hub Opening	ZL	1½"	For -RL Opening
XL	Small Closing Plate	DL	2"	For -RL Opening
X	Large Closing Plate	EL	2½"	For -RL Opening
RXL	Large Hub Opening adapted to small Closing Plate.	F	3"	For -R Opening
		G	3½"	For -R Opening
RRL	Large Hub Opening adapted to small Hub Opening	H	4"	For -R Opening

Fifth Terminal Designation

- 5T6 installed at 6:00
- 5T9 installed at 9:00

Barrel Lock / Guard Provision

U2448-X-QG-5T9-K3-BLG-ARE

**Milbank
Drawing
Number**

TG = Triplex Ground
QG = Quadplex Ground

Specific Utility Designation

Lugs [1Ø or 3Ø – 350 or 600 kcmil]

- Single [K1, K3, K5, K7]
- Twin [K2, K4, K6, K8]



U3800
(No deadfront required)



U3803



U3806

PROFILE

Milbank's air conditioner disconnect has a removable hinged cover which makes wiring a breeze. Our compact design meets all wire bending space requirements in the NEC and also complies with article 440-14 in the NEC. To insure the safest conditions, we designed our disconnect pullers to be removable or they may be reinstalled in the "off" position. Another safety feature is the padlock provision on the front cover. As with all Milbank products, our enclosure is constructed of G90U galvanized steel and finished with an attractive, light gray, baked powder coating. Our state of the art finish combines epoxy and polyester hybrid resins into a hybrid powder coating which is then electrostatically applied. This offers a durable, nonfading finish.

TECHNICAL INFORMATION

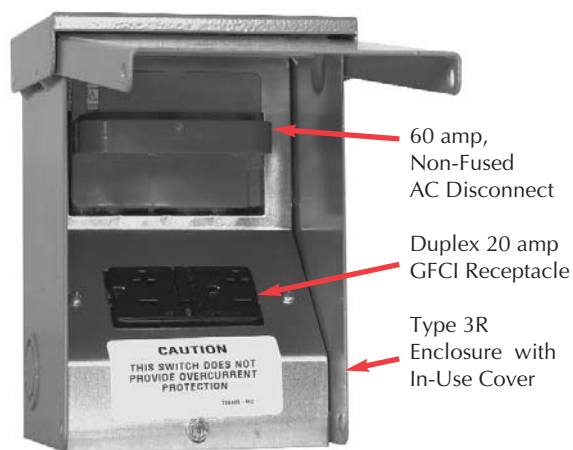
AMP	TYPE	CATALOG NUMBER	MAX H.P.	WT. #	LINE & LOAD WIRE RANGE		GROUND WIRE RANGE	DIMENSIONS			WIRE RATING	
					CU	AL		D"	W"	H"	CU °C	AL °C
30	FUSIBLE	U3803	3	3.7	#14-#2 AWG	#12-#2 AWG	#12-2 AWG	3	5	9 1/4	60°/75°	60°
60	FUSIBLE	U3806	10	3.7	#14-#2 AWG	#12-#2 AWG	#12-2 AWG	3	5	9 1/4	60°/75°	60°
60	NONFUSIBLE	U3800	10	3.25	#14-#2 AWG	#12-#2 AWG	#14-4 AWG	3	5	8	60°/75°	60°/75°

✓ **U3800 is UL Listed without deadfront. Line and load terminations are fully insulated.**

✓ **U3803 & U3806 std. quantity is 6 per carton.**

✓ **U3800 std. quantity is 20 per carton.**

Combination AC Disconnect / 20 Amp GFCI Receptacle—Together in 1 Box



U3822-20GR

- Meets NEC # 210.63 Requirements *
- UL Listed as Power Outlet
- Type 3R Enclosure
- In-Use Cover**
- Duplex Ground Connector
- 1" Concentric Knockouts

AC DISCONNECT

- 1Ø, 240 Volt
- 60 amp, Non-Fused

GFCI RECEPTACLE

- 20 amp
- Reset/Test Button
- Padlock provision

* NEC® #210.63 Heating, Air-Conditioning and Refrigeration Equipment Outlet.

...The receptacle shall be located on the same level and within 7.5 m (25 ft.) of the heating, air-conditioning and refrigeration equipment.

* NEC® #210.08 Ground-Fault Circuit- Interruptor protection for personnel.

AMP	TYPE	CATALOG NUMBER	MAX H.P.	WT. #	LINE & LOAD CONNECTOR WIRE RANGE		GROUND CONNECTOR WIRE RANGE	DIMENSIONS			WIRE RATING	
					CU	AL	CU/AL	D"	W"	H"	CU °C	AL °C
60	NONFUSIBLE	U3822-20GR	10	6	#14-#2 AWG	#12-#2 AWG	#14-4 AWG	4.8	5.25	7.4	60°/75°	60°/75°

To ensure the safest conditions, Milbank disconnect pullers are designed to be reversible so they may be reinstalled in the OFF position. All units are designed with a padlock provision on the cover for security.

****Note:** U3822-20GR cover rated as *IN-USE COVER* (Cover may be closed with cords plugged into receptacle).

*Reprinted with permission from NFPA 70-2002, *National Electrical Code*®, Copyright 2001, National Fire Protection Association, Quincy, MA 02269. This reprinted material is not the complete and official position of the NFPA on the referenced subject, which is represented only by the standard in its entirety. National Electrical Code® and NEC® are registered trademarks of the National Fire Protection Association, Quincy, MA.

Hot Tub Disconnect or Sub Panel Breaker Enclosure—Type 3R

Spa Box with GFCI Protection



U4881-O-50GB

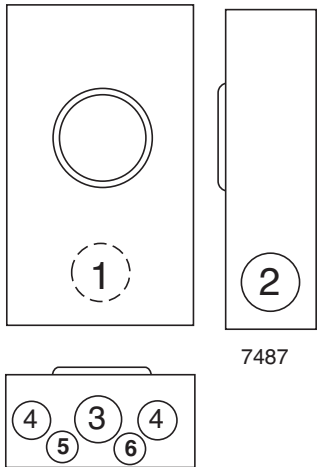
- 240 volt ground fault protection
- UL listed, Type 3R rainproof
- Milbank reliability
- Easy installation
- 2 pole, 50 amp GFCI breaker protection
- Compact size:
8-1/2" H x 7-1/2" W x 3-3/4" D
- 3 or 4 wire installation
- 1Ø, 120 / 240 VAC
- Standard package of 12
- 2 extra one-pole breaker spaces
- 100 amp overall rating

Sub Panel Breaker Enclosure

- Use as a 100 amp, 4 circuit sub panel enclosure
- U4881-O has provision for (2) 2-pole or (4) 1-pole small frame breakers



AMP	TYPE	CATALOG NUMBER	WT. #	LINE & LOAD CONNECTOR WIRE RANGE		GROUND CONNECTOR WIRE RANGE	DIMENSIONS		
				CU	AL	CU/AL	D"	W"	H"
—	BREAKER PROVISION	U4881-O	7	#14-1/0	#14-1/0	#14-1/0	3 3/4	7 1/2	8 1/2
50	BREAKER	U4881-O-50GB	8	#14-1/0	#14-1/0	#14-1/0	3 3/4	7 1/2	8 1/2
60	BREAKER	U4881-O-60GB	8	#14-1/0	#14-1/0	#14-1/0	3 3/4	7 1/2	8 1/2



U7487-RL-TG-KK

SINGLE POSITION
125 AMP-4 TERMINAL-RINGLESS-600 VAC

125 AMP-4 TERMINAL*-RINGLESS-1Ø3W

SERVICE	AMP	CATALOG NUMBER	HUB	CONNECTORS CU/AL	BY- PASS	DIMENSIONS			CONCENTRIC K.O.'S					
						D"	W"	H"	1	2	3	4	5	6
OH	125	U7487-RL-TG-KK	H.O.	#6-2/0	HORN	3 ⁵ / ₁₆	8	11 ¹ / ₂	1 ¹ / ₂	1 ¹ / ₂	2	1 ¹ / ₄	—	1 ¹ / ₄

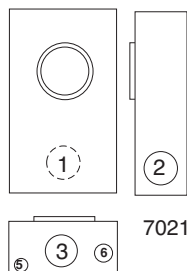
- HUBS:** For proper hub selection see the hub suffix chart on the accessory page.
- BYPASS:** The -KK horn type bypass is factory installed and permits changing and testing of the meter without interrupting customer service.
- CONNECTORS:** Extruded aluminum connectors are tin plated. Units are supplied with duplex neutral.
- *FIFTH TERMINAL:** For field mounted fifth terminal, order catalog number 5T24R.

Utility requirements for this equipment may vary. Always consult the serving utility for their requirements before ordering or installing equipment in this catalog.

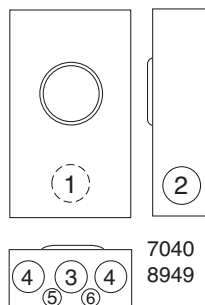




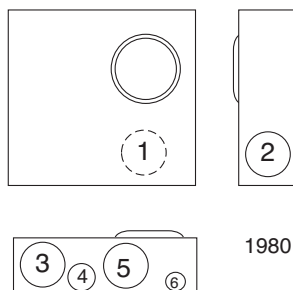
U7021-RL-TG-KK



7021

7040
8949

U7040-RL-TG-KK



1980



U1980-O-KK

200 AMP-4 TERMINAL-RINGLESS

SERVICE	CATALOG NUMBER	HUB	CONNECTORS CU/AL		BY-PASS	DIMENSIONS			CONCENTRIC K.O.'S					
			LINE	LOAD		D"	W"	H"	1	2	3	4	5	6
OH	U8949-RL-TG-KK	H.O.	#6-350 kcmil	#6-350 kcmil	HORN	4 ¹ / ₈	8	15 ¹ / ₂	2 ¹ / ₂	2 ¹ / ₂	2 ¹ / ₂	1 ¹ / ₄	—	1 ¹ / ₄
OH	U7021-RL-TG-KK	H.O.	#6-350 kcmil	#6-350 kcmil	HORN	4 ¹ / ₈	8	15 ¹ / ₂	2 ¹ / ₂	2 ¹ / ₂	2 ¹ / ₂	—	1 ¹ / ₄	1 ¹ / ₄ , 1 ¹ / ₂
OH/UG	U7040-RL-TG-KK	H.O.	#6-350 kcmil	#6-350 kcmil	HORN	4 ¹ / ₈	11	15 ¹ / ₂	2 ¹ / ₂	2 ¹ / ₂	2 ¹ / ₂	2 ¹ / ₂	1 ¹ / ₄ , 1 ¹ / ₂	1 ¹ / ₄

HUBS: For proper hub selection see the hub suffix chart on the accessory page.

FIFTH TERMINAL: For field mounted fifth terminal for **U8949**, **U7021** & **U7040**, order catalog number **K5T**.

CONNECTORS: Extruded aluminum connectors are tin plated.

GROUND: For indoor service for **U8949** order as extra catalog number **BL1048-KK** block assembly to be installed to provide insulated neutral.

200 AMP-4 TERMINAL-SIDE WIREWAY-RINGLESS

AMP	SERVICE	CATALOG NUMBER	HUB	CONNECTORS CU/AL		BY-PASS	DIMENSIONS			CONCENTRIC K.O.'S					
				LINE	LOAD		D"	W"	H"	1	2	3	4	5	6
200	UG	U1980-O-KK	BLANK	#6-350 kcmil	#6-350 kcmil	HORN	4 ¹ / ₂	13	15 ¹ / ₄	2 ¹ / ₂	2 ¹ / ₂	3	1 ¹ / ₂	2 ¹ / ₂	1 ¹ / ₄ , 1 ¹ / ₂

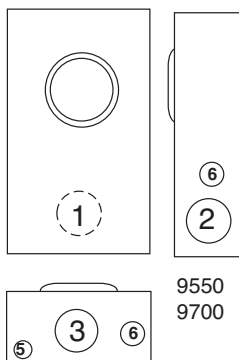
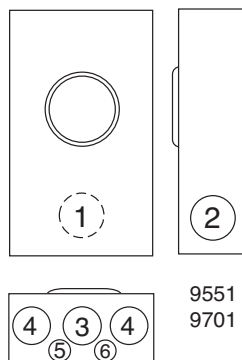
FIFTH TERMINAL: For factory installed fifth terminal in the 9 o'clock position add the suffix **-5T**. For field mounted fifth terminal order catalog number **K5T**.

CONNECTORS: Extruded aluminum connectors are tin plated. Units are supplied with triplex neutral.

Utility requirements for this equipment may vary. Always consult the serving utility for their requirements before ordering or installing equipment in this catalog.



U9550-RL


9550
9700

9551
9701


U9701-O

SINGLE POSITION

200 AMP-5 & 7 TERMINAL-LEVER BYPASS-HEAVY DUTY-RINGLESS-600 VAC

200 AMP-5 TERMINAL-RINGLESS-3Ø3W

AMP	SERVICE	CATALOG NUMBER	HUB	CONNECTORS CU/AL		BY-PASS	DIMENSIONS			CONCENTRIC K.O.'S					
				LINE	LOAD		D"	W"	H"	1	2	3	4	5	6
200	OH	U9550-RL*	H.O.	#6-350 kcmil	#6-350 kcmil	LEVER	4 ⁷ / ₈	10	18 ¹ / ₂	3	2 ¹ / ₂	3	—	1 ¹ / ₄ , 1 ¹ / ₂	3 ³ / ₄
200	UG	U9551-O*	BLANK	#6-350 kcmil	#6-350 kcmil	LEVER	4 ⁷ / ₈	13	19	3	2 ¹ / ₂	3	3	1 ¹ / ₄	1 ¹ / ₄ , 1 ¹ / ₂

*Grounded B phase (may be field isolated).

HUBS: For proper hub selection see the hub suffix chart on the accessory page.

BYPASS: Lever supplies clamping action on meter spades and also operates bypass device.

CONNECTORS: Units supplied with extruded aluminum connectors and bonded triplex ground.

FIFTH TERMINAL: Fifth terminal is supplied in the 6 o'clock position. For factory installed fifth terminal in the 9 o'clock position add the suffix **-5T9** to the catalog number.

200 AMP-7 TERMINAL-RINGLESS-3Ø4W

AMP	SERVICE	CATALOG NUMBER	HUB	CONNECTORS CU/AL		BY-PASS	DIMENSIONS			CONCENTRIC K.O.'S					
				LINE	LOAD		D"	W"	H"	1	2	3	4	5	6
200	OH	U9700-RRRL	H.O.	#6-350 kcmil	#6-350 kcmil	LEVER	4 ⁷ / ₈	10	18 ¹ / ₂	3	2 ¹ / ₂	3	—	1 ¹ / ₄ , 1 ¹ / ₂	3 ³ / ₄
200	UG	U9701-O	BLANK	#6-350 kcmil	#6-350 kcmil	LEVER	4 ⁷ / ₈	13	19	3	2 ¹ / ₂	3	3	1 ¹ / ₄	1 ¹ / ₄ , 1 ¹ / ₂

HUBS: For proper hub selection see the hub suffix chart on the accessory page.

BYPASS: Lever supplies clamping action on meter spades and also operates bypass device.

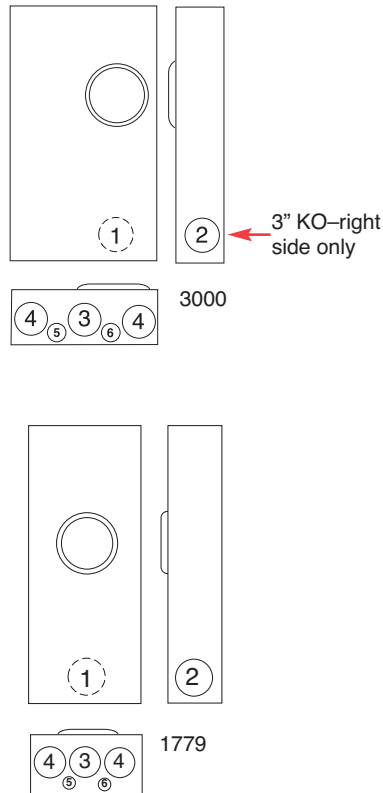
CONNECTORS: Units supplied with extruded aluminum connectors and bonded triplex ground.

INSULATED NEUTRAL: For field installed insulated neutral for the **U9701** order kit number **K1047**.

Utility requirements for this equipment may vary. Always consult the serving utility for their requirements before ordering or installing equipment in this catalog.



U3000-O-K3L-K2L

U1779-RRL
(shown with optional
hub installed)

320 AMP-4 TERMINAL-RINGLESS-1Ø3W-600 VAC

SERVICE	CATALOG NUMBER	HUB	CONNECTORS CU/AL		5T KIT	BY- PASS	DIMENSIONS			CONCENTRIC K.O.'S					
			LINE	LOAD			D"	W"	H"	1	2	3	4	5	6
UG	U3000-O-K3L-K2L	BLANK	#4-600 kcmil (2) 1/0-250 kcmil	TWIN #6-350 kcmil	K3865	LEVER	4 ⁷ / ₈	15	30	3	3	3	3	1/4	1/4, 1/2
OH	U1779-RRL	H.O.	3/8"-16 STUD	3/8"-16 STUD	K3866	LEVER	4 ⁷ / ₈	13	38 ³ / ₄	3	2 ¹ / ₂	3	3	1/4	1/4, 1/2

HUBS: For proper hub selection see the hub suffix chart on the accessory page.

BYPASS: Lever supplies clamping action and also operates bypass device.

CONNECTORS: Stud type units supplied with 3/8"-16 hex head nuts with Belleville washers. For connector kits, order as extra **K1540** (600 kcmil). For twin lug connectors order as extra **K1350** (350 kcmil). **U3000-O-K3L-K2L** uses **K1540L** (single 600) or **K1350L** (twin 350) non-rotating connectors for load side. Separate kits are required for both line and load.

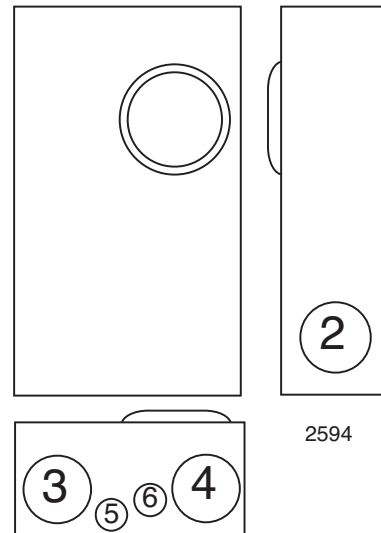
FIFTH TERMINAL: For factory installed fifth terminal in the **6 o'clock position** add the suffix **-5T6** to the catalog number. For factory installed fifth terminal in the **9 o'clock position** at the suffix **-5T9** to the catalog number. For field installed fifth terminal, order as extra **K3865**.

Utility requirements for this equipment may vary. Always consult the serving utility for their requirements before ordering or installing equipment in this catalog.

320 AMP CONTINUOUS 400 AMP MAX.



U2594-X-K7-INV
(Shown without lugs)



2594

SINGLE POSITION

320 AMP CONTINUOUS-7 TERMINAL-LEVER BYPASS-HEAVY DUTY-RINGLESS-600 VAC

320 AMP-SIDE WIREWAY-7 TERMINAL-RINGLESS-3Ø4W

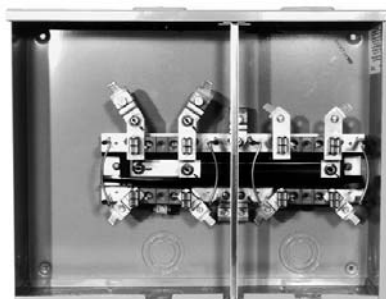
AMP	SERVICE	CATALOG NUMBER	HUB	CONNECTORS CU/AL		BY-PASS	DIMENSIONS			CONCENTRIC K.O.'S					
				LINE	LOAD		D"	W"	H"	1	2	3	4	5	6
320	OH/UG	U2594-X-K7-INV	C.P.	#4-600 kcmil	3/8"-16 STUD	LEVER	6 ¹ / ₂	19	34 ¹ / ₈	—	3	4	4	1 ¹ / ₄	1 ¹ / ₂ , 3 ³ / ₄ , 1

HUBS: For proper hub selection see the hub suffix chart on the accessory page.

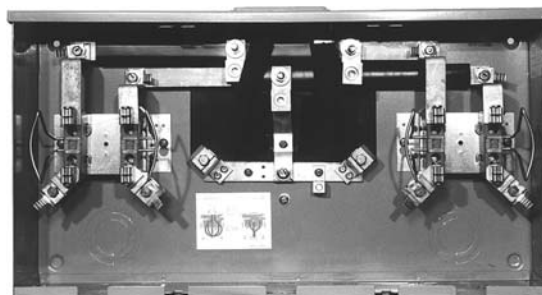
BYPASS: Lever supplies clamping action on meter spades and also operates bypass device.

CONNECTORS: Type K7 single barrel 600 kcmil (catalog number **K3441**) line side lugs included. For load side lugs, stud type units are supplied with 3/8"-16 hex head nuts with Belleville washers. For single lug connector kits, order as extra **K3441** (600 kcmil). For twin lug connectors order as extra **K3442** (350 kcmil).

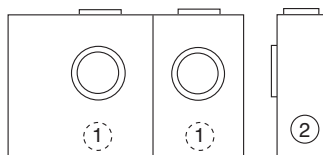
Utility requirements for this equipment may vary. Always consult the serving utility for their requirements before ordering or installing equipment in this catalog.



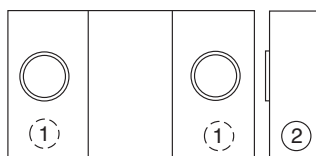
L572-XL-KK

4" SIDE WIREWAY
OH/UG SERVICE

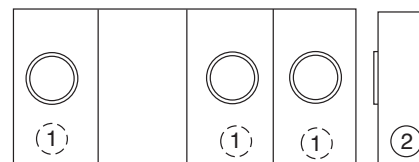
U1252-X-KK (Shown with optional line side connectors)



L572-6



1252



1253-6

100 AMP / POSITION-4 TERMINAL-RINGLESS-1Ø3W-OVERHEAD-300 VAC

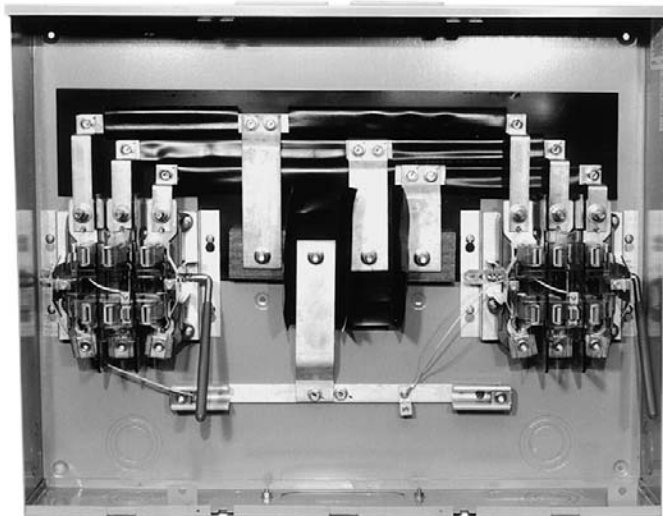
AMPS	NO. OF POS.	CATALOG NUMBER	HUB	CONNECTOR CU/AL		BY-PASS	DIMENSIONS			CONCENTRIC K.O.'S				
				LINE	LOAD		D"	W"	H"	1	2	3	4	5
100	2	L572-XL-KK	C.P.	#2-350 kcmil	#6-2/0	HORN	4 $\frac{1}{2}$	20 $\frac{5}{16}$	16	2	2	2	2 $\frac{1}{2}$	$\frac{1}{4}$, $\frac{1}{2}$
100	3	L573-XL-KK	C.P.	#2-350 kcmil	#6-2/0	HORN	4 $\frac{1}{2}$	28 $\frac{1}{2}$	16	2	2	2	2 $\frac{1}{2}$	$\frac{1}{4}$, $\frac{1}{2}$
100	4	L574-XL-KK	C.P.	#2-350 kcmil	#6-2/0	HORN	4 $\frac{1}{2}$	40 $\frac{11}{16}$	16	2	2	2	2 $\frac{1}{2}$	$\frac{1}{4}$, $\frac{1}{2}$
100	5	L575-XL-KK	C.P.	#2-350 kcmil	#6-2/0	HORN	4 $\frac{1}{2}$	48 $\frac{7}{8}$	16	2	2	2	2 $\frac{1}{2}$	$\frac{1}{4}$, $\frac{1}{2}$
100	6	L576-XL-KK	C.P.	#2-350 kcmil	#6-2/0	HORN	4 $\frac{1}{2}$	57 $\frac{1}{16}$	16	2	2	2	2 $\frac{1}{2}$	$\frac{1}{4}$, $\frac{1}{2}$

CONNECTORS: Extruded aluminum connectors are tin plated.**BUSSING:** Supplied with 5/16" x 1" aluminum bussing.**FIFTH TERMINAL:** For field installed fifth terminal, order as extra catalog number **5T8K2** for the 6 o'clock position, and Kit **#K9959** for the 9 o'clock position.**EXTRA WIRE SPACE:** Extra wire space of 4" provided on the left end of 2 and 3 position gangs. Furnished on both ends of 4, 5, and 6 position gangs.**MAIN BUS RATING:** For main bus rating, see the conduit and ampacity information page in this catalog.**BYPASS:** The -KK horn type bypass is factory installed and permits changing and testing of the meter without interrupting customer service when used with utility-supplied jumpers.

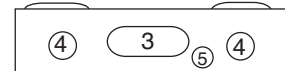
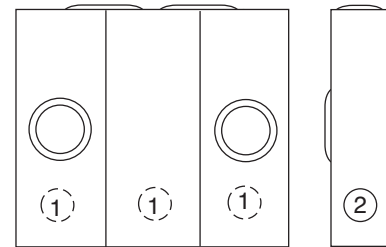
150 & 200 AMP / POSITION-4 TERMINAL-RINGLESS-1Ø3W-OH/UG-300 VAC

NO. OF POS.	CATALOG NUMBER	HUB	CONNECTOR CU/AL		BY-PASS	DIMENSIONS			CONCENTRIC K.O.'S						
			LINE	LOAD		D"	W"	H"	1	2	3	4	5	6	7
2	U1252-X-KK*	C.P.	3/8"-16 STUD	#6-350 kcmil	HORN	5 $\frac{1}{8}$	26 $\frac{1}{2}$	14	2 $\frac{1}{2}$	2 $\frac{1}{2}$	3	2 $\frac{1}{2}$	$\frac{1}{2}$	1	$\frac{1}{4}$
3	U1253-X-KK*	C.P.	3/8"-16 STUD	#6-350 kcmil	HORN	5 $\frac{1}{8}$	34 $\frac{11}{16}$	14	2 $\frac{1}{2}$	2 $\frac{1}{2}$	3	2 $\frac{1}{2}$	$\frac{1}{2}$	1	$\frac{1}{4}$
4	U1254-X-KK*	C.P.	3/8"-16 STUD	#6-350 kcmil	HORN	5 $\frac{1}{8}$	42 $\frac{7}{8}$	16	2 $\frac{1}{2}$	2 $\frac{1}{2}$	3	2 $\frac{1}{2}$	$\frac{1}{2}$	1	$\frac{1}{4}$
5	U1255-X-KK*	C.P.	3/8"-16 STUD	#6-350 kcmil	HORN	5 $\frac{1}{8}$	54 $\frac{7}{8}$	16	2 $\frac{1}{2}$	2 $\frac{1}{2}$	3	2 $\frac{1}{2}$	$\frac{1}{2}$	1	$\frac{1}{4}$
6	U1256-X-KK*	C.P.	3/8"-16 STUD	#6-350 kcmil	HORN	5 $\frac{1}{8}$	63 $\frac{7}{8}$	18	2 $\frac{1}{2}$	2 $\frac{1}{2}$	3	2 $\frac{1}{2}$	$\frac{1}{2}$	1	$\frac{1}{4}$

HUB: For proper hub selection refer to the hub suffix chart on the accessory page. For the **U1255** & **U1256** units, two hub openings are supplied and the extra opening is closed with a closing plate as standard.**FIFTH TERMINAL:** For field mounted fifth terminal order catalog number **K5T** for 9 o'clock position.***CONNECTORS:** Extruded aluminum connectors are tin plated. Units supplied with 3/8"-16 hex head nuts with Belleville washers on line side. Order connector kit **K1541** (600 kcmil) as extra.**BUSSING:** Refer to the Conduit & Ampacity Section on page 25 of this catalog for information on ampacity of bussing.**FOR OVERHEAD SERVICE:** The **U1254**, **U1255**, and the **U1256** units are factory assembled for underground service. If overhead service is desired an extension kit is required; order catalog number **K3923** for the **U1254** and **U1255** units, and **K3955** for the **U1256** unit. For factory installed overhead service add suffix **-EX** to the catalog number.*Utility requirements for this equipment may vary. Always consult the serving utility for their requirements before ordering or installing equipment in this catalog.*



U2732-XT-PED
(shown without pedestal)



CENTER WIREWAY

200 AMP -7 TERMINAL-RINGLESS-3Ø4W-OVERHEAD / UNDERGROUND*

AMPS	SERV.	NO. OF POS.	CATALOG NUMBER	HUB	CONNECTOR CU/AL		BY-PASS	DIMENSIONS			CONCENTRIC K.O.'S				
					LINE	LOAD		D"	W"	H"	1	2	3	4	5
200	OH/UG	2	U2732-XT-PED	(2)C.P.	3/8"-16 STUD	#6-350 kcmil	LEVER	6	32 ¹ / ₈	25 ¹ / ₄	2 ¹ / ₂	2 ¹ / ₂	PED	2 ¹ / ₂	1/4, 1/2
200	OH/UG	3	U2733-XT-PED	(2)C.P.	3/8"-16 STUD	#6-350 kcmil	LEVER	6	42 ³ / ₁₆	25 ¹ / ₄	2 ¹ / ₂	2 ¹ / ₂	PED	2 ¹ / ₂	1/4, 1/2
200	OH/UG	4	U2734-XT-PED	(2)C.P.	3/8"-16 STUD	#6-350 kcmil	LEVER	6	52 ¹ / ₄	25 ¹ / ₄	2 ¹ / ₂	2 ¹ / ₂	PED	2 ¹ / ₂	1/4, 1/2

HUBS: Units supplied with two closing plates. To order hubs as extra refer to the hub suffix chart on the accessory page.

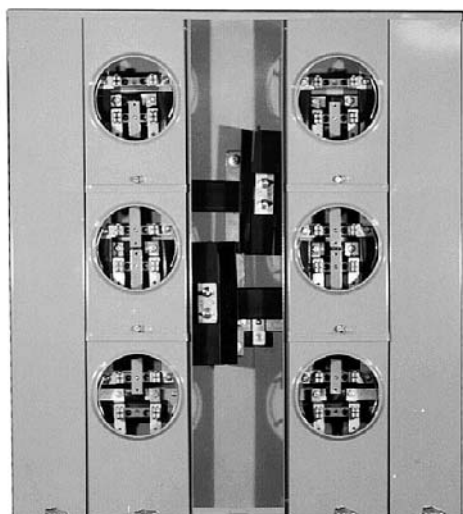
BYPASS: Lever supplies clamping action on meter spades and also operates bypass device.

***CONNECTOR KITS:** Line wire sections supplied with studs. For connector kits order **K3082** (single-350 kcmil), **K3441** (single-600 kcmil), or twin **K3442** (twin-350 kcmil) or **K3083** (twin-600 kcmil.) Line connectors can be reversed to change from OH to UG service.

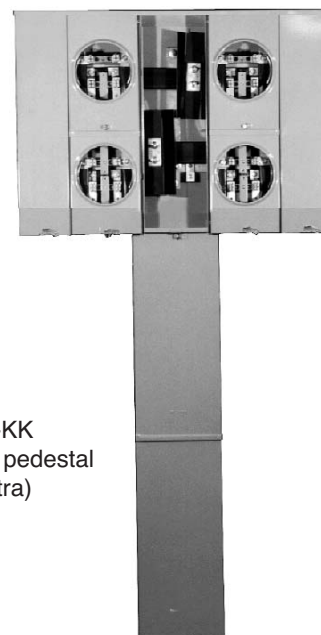
***UNDERGROUND PEDESTALS:** For underground service order **S2291-TO** pedestal raceway. A 12" pedestal extension kit is also available. Order catalog number **S2571**.

BUSSING: Bussing is 3/8" x 1" aluminum. Refer to the conduit & ampacity page of this catalog for information on ampacity of bussing.

Utility requirements for this equipment may vary. Always consult the serving utility for their requirements before ordering or installing equipment in this catalog.



U2866-X
(Shown without pedestal)



U2864-X-PED-KK
(Order breakers and pedestal
raceway as extra)

VERTICAL—1Ø

125 AMP/POSITION

NO. OF POS.	CATALOG NUMBER	MAIN BUS RATING	LINE CONNECTOR SIZE
2	U2852-X-KK-K1-PED	200 amp	#6-350 kcmil
3	U2853-X-KK-K1-PED	200 amp	#6-350 kcmil

200 AMP/POSITION

NO. OF POS.	CATALOG NUMBER	MAIN BUS RATING	LINE CONNECTOR SIZE
2	U2862-X-KK-K1-PED	250 amp	#6-350 kcmil
3	U2863-X-KK-K1-PED	300 amp	#6-350 kcmil

125 AMP/POSITION

RECTANGULAR—1Ø

200 AMP/POSITION

NO. OF POS.	CATALOG NUMBER	MAIN BUS RATING	LINE CONNECTOR SIZE
4	U2854-X-KK-PED	400 amp	*3/8"-16 STUD
5	U2855-X-KK-PED	400 amp	*3/8"-16 STUD
6	U2856-X-KK-PED	400 amp	*3/8"-16 STUD

NO. OF POS.	CATALOG NUMBER	MAIN BUS RATING	LINE CONNECTOR SIZE
4	U2864-X-KK-PED	400 amp	*3/8"-16 STUD
5	U2865-X-KK-PED	600 amp	*3/8"-16 STUD
6	U2866-X-KK-PED	600 amp	*3/8"-16 STUD

CONNECTOR KITS *

SIZE	SUFFIX	KIT NUMBER	COMPATIBLE WITH	WIRE RANGE
SINGLE	-K1	K1539	U2852-56 U2862-66	#6-350 kcmil
	-K3	K1540	U2854-56 U2864-66	#4-600 kcmil
TWIN	-K2	K1350	U2854-56 U2863-66	#6-350 kcmil
	-K4	K1541	U2864-66	#2-600 kcmil

***CONNECTORS:** For line wire connector kits, order separately.

FIFTH TERMINALS: For field mounted fifth terminal order catalog number **K2381**. Order one per meter position (9 o'clock position only).

BREAKERS: Units have provision for one double pole main per meter position. Breakers not included, order as extra Milbank type **Q** or **QNR** or comparable. Refer to the accessories section in back of catalog.

UNDERGROUND SERVICE: For underground service order **S2291-TO** pedestal raceway. Order separately.

PEDESTAL EXTENSION KIT: A 12" pedestal extension kit is also available. Order catalog number **S2571**.

Utility requirements for this equipment may vary. Always consult the serving utility for their requirements before ordering or installing equipment in this catalog.

CONDOMINIUM METERING BANKS



U2852-X

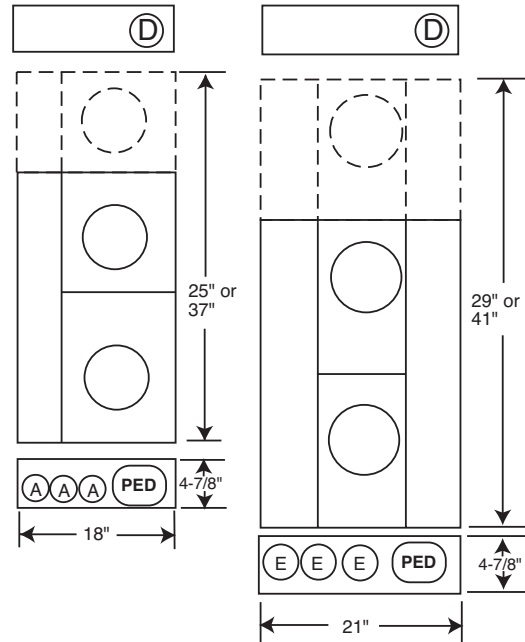
FIG.	DIMENSIONS
A	1 1/4" CONCENTRIC K.O.
B	1/4, 1/2" CONCENTRIC K.O.
C	3" CONCENTRIC K.O.
D	4" HUB OPENING
E	2" CONCENTRIC K.O.

VERTICAL

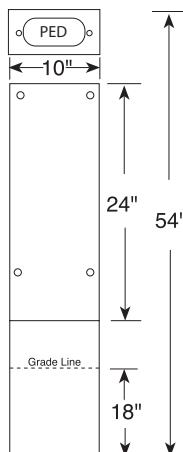
with pedestal option in bottom

125 amp/pos.
(2-3 position)

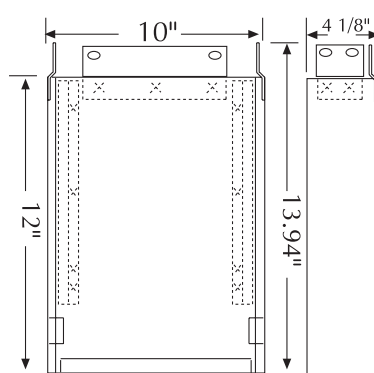
200 amp/pos.
(2-3 position)



PEDESTAL OPTION Pedestal Raceway S2291-TQ



PEDESTAL OPTION Pedestal Extension Unit S2571



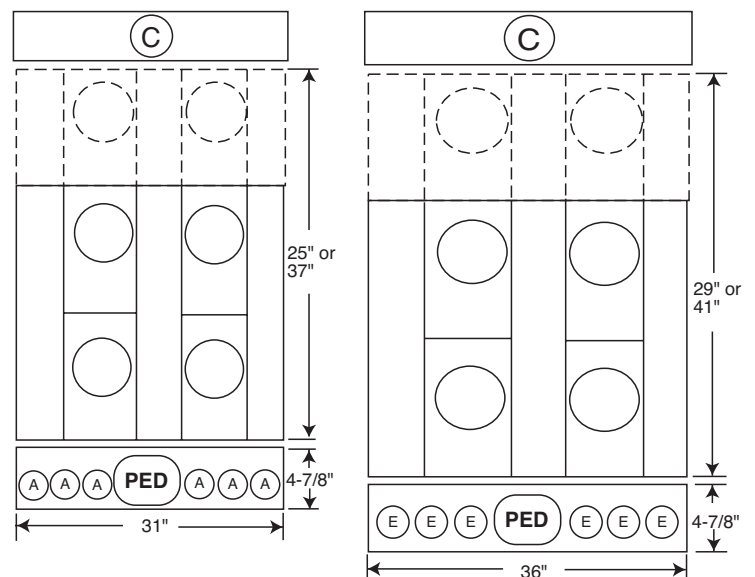
FIFTH TERMINAL # K2381
(125-200 amp)

RECTANGULAR

with pedestal option in bottom

125 amp/pos.
(4,5 & 6 position)

200 amp/pos.
(4,5 & 6 position)



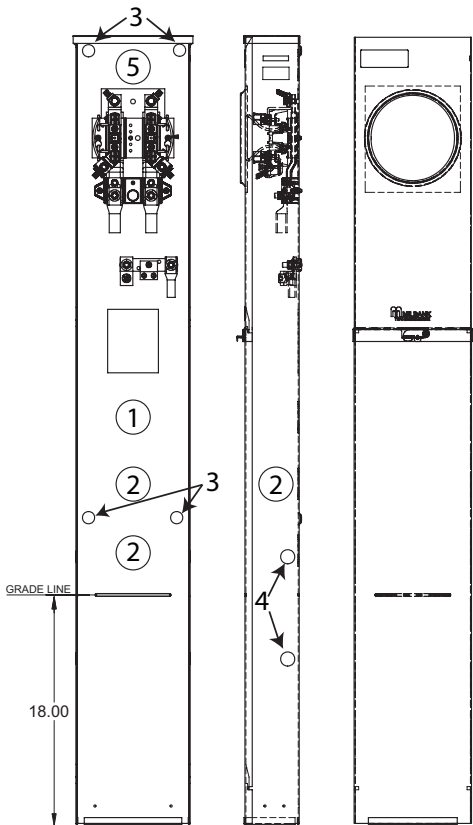
Utility requirements for this equipment may vary. Always consult the serving utility for their requirements before ordering or installing equipment in this catalog.

100 / 200 AMP-4 TERMINAL-RESIDENTIAL PEDESTAL
SINGLE OR DOUBLE POSITION-1Ø3W-600 VAC

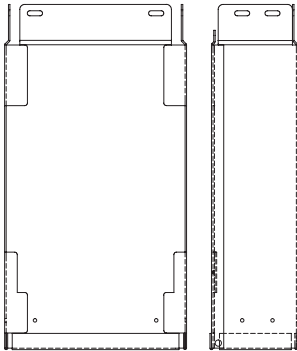
PEDESTALS



U8436-O



Extension Unit
K5800



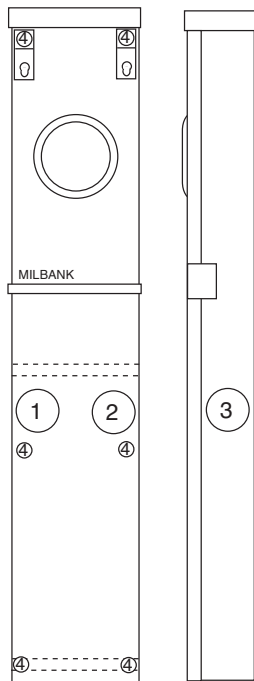
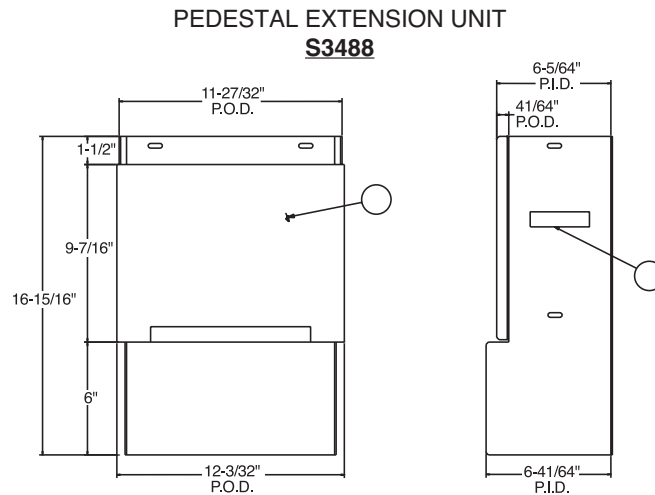
100 / 200 AMP-4 TERMINAL-CECHA APPROVED-RINGLESS-1Ø3W-600 VAC

AMP	SERVICE	CATALOG NUMBER	HUB	CONNECTORS CU/AL		BY- PASS	DIMENSIONS			CONCENTRIC K.O.'S					
				LINE	LOAD		D"	W"	H"	1	2	3	4	5	6
200	UG	U8436-O	BLANK	4/0 Crimp-On	#6-350 kcmil	HORN	4 1/8	9	62	2	2	5/16	1/2	2	—

- HANGING HOOK:** Supplied with keyhole hanger for easy mounting.
- EXTENSION UNIT:** For 15" burial applications, order extension unit **K5800**; for 30" applications, order (2) **K5800** units.
- FIFTH TERMINAL:** For field installed fifth terminal, order catalog number **K5T** (9 o'clock position).
- BYPASS:** Horn type bypass.

Utility requirements for this equipment may vary. Always consult the serving utility for their requirements before ordering or installing equipment in this catalog.




9108
9107


U9107-O


100 / 200 AMP-5 & 7 TERMINAL-LEVER BYPASS
HEAVY DUTY PEDESTAL-600 VAC

PEDESTALS

100 / 200 AMP-5 TERMINAL-HEAVY DUTY-1Ø-3W OR 3Ø-3W

# OF TERMS	CATALOG NUMBER	SERVICE	HUB	CONNECTORS CU/AL		BY-PASS	DIMENSIONS			CONCENTRIC K.O.'S				
				LINE	LOAD		D"	W"	H"	1	2	3	4	5
5	U9108-O	UG	BLANK	3/0-4/0	#6-350 kcmil	LEVER	6	11	58	2½	2½	2½	5/16	—

100 / 200 AMP-7 TERMINAL-HEAVY DUTY-3Ø4W

# OF TERMS	CATALOG NUMBER	SERVICE	HUB	CONNECTORS CU/AL		BY-PASS	DIMENSIONS			CONCENTRIC K.O.'S				
				LINE	LOAD		D"	W"	H"	1	2	3	4	5
7	U9107-O	UG	BLANK	3/0-4/0	#6-350 kcmil	LEVER	6	11	58	2½	2½	2½	5/16	—

BYPASS: Lever supplies clamping action on meter spades and also operates bypass device.

BOTTOM PLATE: Bottom plate is not furnished with this unit. However, if plate is required, order catalog number **S9157** as extra.

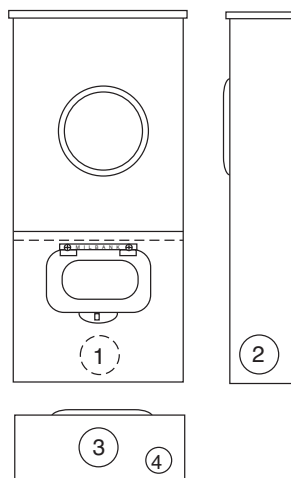
NEUTRAL: The **U9108-O** is supplied with a center disconnect neutral.

EXTENSION KIT: For direct burial applications, order kit **S3488** as separate item.

Utility requirements for this equipment may vary. Always consult the serving utility for their requirements before ordering or installing equipment in this catalog.



U7375-RL-KK

U7607-RL-200-KK
(Supplied with 200 Amp circuit breaker)

100 AMP-4 TERMINAL-METER MAIN (PLUG-IN)-RINGLESS-1Ø

CATALOG NUMBER	SERVICE	HUB	CONNECTORS CU/AL		BY-PASS	DIMENSIONS			CONCENTRIC K.O.'S				
			LINE	LOAD		D"	W"	H"	1	2	3	4	5
U7375-RL-KK	OH	H.O.	#6-2/0	C.B.	HORN	3 ³ / ₄	8 ¹ / ₈	22	1 ¹ / ₄	1 ¹ / ₄	1 ¹ / ₄	1 ¹ / ₄ , 1 ¹ / ₂	—

CIRCUIT BREAKER: Main circuit breaker not supplied with unit. For 100 amp service order Milbank catalog number Q2100 separately. See circuit breaker chart on accessory page for other compatible models.

200 AMP-4 TERMINAL-METER MAIN-RINGLESS-1Ø

CATALOG NUMBER	SERVICE	HUB	CONNECTORS CU/AL		BY-PASS	DIMENSIONS			CONCENTRIC K.O.'S				
			LINE	LOAD		D"	W"	H"	1	2	3	4	5
U7607-RL-200-KK	OH	H.O.	#6-350 kcmil	#1-300 kcmil	HORN	4 ¹ / ₂	8 ¹ / ₈	29	2	2	2	1 ¹ / ₄ , 1 ¹ / ₂	—

CIRCUIT BREAKER: 200 amp main circuit breaker factory bussed. Order Milbank catalog number UQFB-200-X1 for replacement. Other amperages available. See Milbank circuit breaker chart on accessory page.

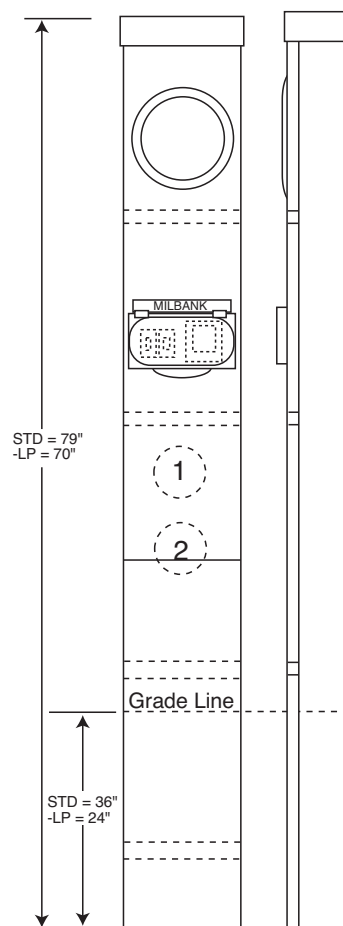
HUBS: Order hubs separately-see accessory page for ordering information.

FIFTH TERMINAL: For field mounted fifth terminal for U7375 order catalog number 5T8K2. For field mounted fifth terminal for U7607 order catalog number K5T. Mount in the 9 o'clock position only.

Utility requirements for this equipment may vary. Always consult the serving utility for their requirements before ordering or installing equipment in this catalog.



NU8980-O-KK



100 / 200 AMP-4 TERMINAL-C/B-RINGLESS-1Ø3W-UG-10K / 22K AIC RATING

CATALOG NUMBER W/ BREAKER INSTALLED	HUB	CONNECTOR CU/AL		BY- PASS	MAIN BREAKER		DIMENSIONS			CONCENTRIC K.O.'S		
		LINE	LOAD		10K	22K	D"	W"	H"	1	2	3
NU8980-O-100-KK	BLANK	#6-350 KCMIL	C/B	HORN	UQFP	UQFPH	6	9	79	2½	2½	—
NU8980-O-100-KK-LP	BLANK	#6-350 KCMIL	C/B	HORN	UQFP	UQFPH	6	9	70	2½	2½	—
NU8980-O-200-KK	BLANK	#6-350 KCMIL	C/B	HORN	UQFP	UQFPH	6	9	79	2½	2½	—
NU8980-O-200-KK-LP	BLANK	#6-350 KCMIL	C/B	HORN	UQFP	UQFPH	6	9	70	2½	2½	—

MAIN CIRCUIT BREAKERS: For 10K AIC order with factory installed main. For 22K AIC order pedestal without main and order circuit breaker separately. All main breakers are parallel connected. For series wired main order wire kit **K4714** and **UQFP-M** type circuit breaker. See Milbank circuit breaker chart on accessory page.

BRANCH CIRCUIT BREAKERS: Branch Interior accepts most manufacturers <100 amp. See plug-in breaker compatibility chart on accessory page.

FIFTH TERMINAL: For field installed 5th terminal order **5T8K2**. Mounts in 9 o'clock position only.

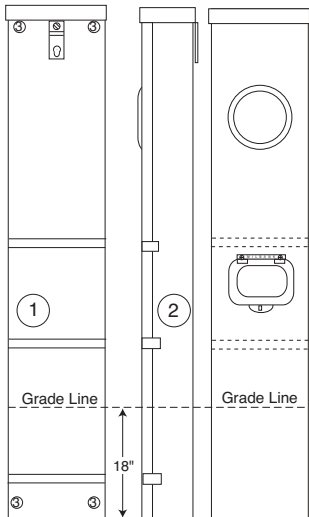
BYPASS: All pedestals have horn-type bypass installed for meter testing or replacement without interrupting customer service.

EXTENSION KIT: Available for low profile (-LP) units only. Order kit **K4694**. See accessory page.

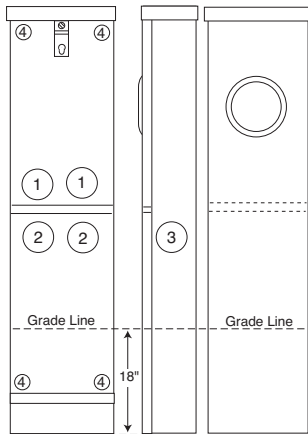
Utility requirements for this equipment may vary. Always consult the serving utility for their requirements before ordering or installing equipment in this catalog.



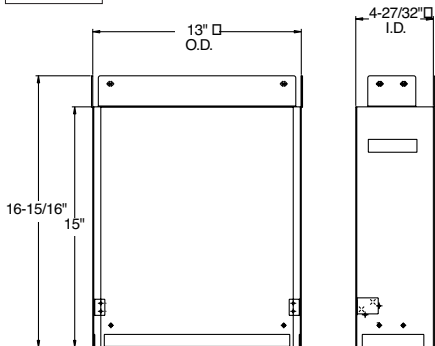
U3849-O-2/200-INV



320 AMP CONTINUOUS
400 AMP MAX



U1748-O-WI



S1848
Pedestal Extension Unit

320 AMP-4 TERMINAL-METER MAIN WITH BREAKERS-RINGLESS-240 VAC-1Ø3W

CATALOG NUMBER	SERVICE	HUB	CONNECTORS CU/AL		BY-PASS	DIMENSIONS			CONCENTRIC K.O.'S				
			LINE	LOAD		D"	W"	H"	1	2	3	4	5
U3849-O-2/200-INV	UG	BLANK	3/8" X 16 STUDS	C.B. #1- 300 kcmil	LEVER	4 ⁷ / ₈	13	64	2 ¹ / ₂	2 ¹ / ₂	5 ⁵ / ₁₆	—	—

BREAKERS: Supplied from factory with 2 double-pole, 200 amp Milbank **UQFB-200** or **UQFBH-200** (22,000 AIC) bolt-on circuit breakers.
 * Must order 22K AIC breakers separately. Order Milbank **UQFBH-200** breakers.
CONNECTORS: The line wire section is supplied with 3/8"-16 studs with hex nuts and captive Bellville washers. For line side connectors, order as extra catalog numbers **K1539** (single-350 kcmil), or **K1540** (single-600 kcmil), or for twin **K1350** (twin-350 kcmil). Order one kit per unit.
EXTENSION KIT: For extension kit order as extra catalog number **S1848**.

320 AMP-4 TERMINAL-WITHOUT BREAKER PROVISION-RINGLESS-600 VAC-1Ø3W

CATALOG NUMBER	SERVICE	HUB	CONNECTORS CU/AL		BY-PASS	DIMENSIONS			CONCENTRIC K.O.'S				
			LINE	LOAD		D"	W"	H"	1	2	3	4	5
U1748-O-WI	UG	BLANK	3/8" X 16 STUDS	TWIN #6- 350 kcmil	LEVER	4 ⁷ / ₈	13	64	2 ¹ / ₂	2 ¹ / ₂	2 ¹ / ₂	5 ⁵ / ₁₆	—

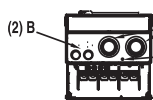
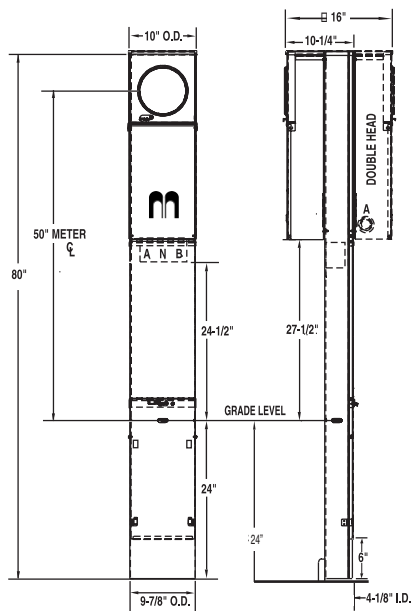
CONNECTORS: The line wire section is supplied with 3/8"-16 studs with hex head nuts and captive Belleville washers. The line side connectors are to be supplied by the Utility, load side is furnished.
BYPASS: The lever supplies clamping action on the meter spade and also operates the bypass device.
FIFTH TERMINAL: For field installed fifth terminal order kit number **K3865**.
PEDESTAL EXTENSION KIT: If extension kit is required, order as extra kit number **S1848**. See accessory page.

Utility requirements for this equipment may vary. Always consult the serving utility for their requirements before ordering or installing equipment in this catalog.





U5136-O-200S



KO's	
A = 1, 1-1/4, 1-1/2, 2	
B = 1/2, 3/4	
C = 1/4 SOLID	

- UL Listed File E90945.
- 200 amp maximum, 120/240 V, 1Ø3W.
- Ringless type meter socket with horn bypass and stainless steel latch.
- Short circuit withstand rating 10K AIC, for 22K AIC, order with "22" suffix.
- Type 3R construction for durable outdoor use.
- Milbank grey polyester powder coat finish.
- Wire terminations accept copper or aluminum conductors.
- Line & Neutral: (2) #6-350 kcmil per phase.
- Line Ground: (4) #14-1/0.
- Load (CB): 1/0 to 300 kcmil per pole.
- Load Neutral: (1) #6-350 kcmil.
- Load Ground: (2) #14-1/0, (4) #14/6.
- Commercial grade, plug-in main circuit breaker. Available in 100, 125, 150 & 200 amp. Type **UQFP-M**.
- 4 circuit plated copper interior accepts (2) 2-pole or (4) 1-pole standard plug-in type circuit breakers. Branch circuit rated to 125 amps max. Acceptable manufacturers: Milbank, Cutler-Hammer, GE or Siemens.
- Factory or field installable receptacle bridge and receptacle / circuit breaker kits available. See accessories.

SINGLE PEDESTAL

CATALOG #	MAIN BREAKER	AMPS	INTERIOR	WEIGHT (lbs)
U5136-O-100S	UQFP-M-100	100	4 Circuit	82
U5136-O-200S	UQFP-M-200	200	4 Circuit	82
U5136-O-200S/22	UQFP-M-200	200	4 Circuit	82

DOUBLE PEDESTAL

CATALOG #	MAIN BREAKER	AMPS	INTERIOR	WEIGHT (lbs)
U5137-O-100S	(2) UQFP-M-100 Series	100	4 Circuit	115
U5137-O-200S	(2) UQFP-M-200 Series	200	4 Circuit	115
U5137-O-200S/22	(2) UQFP-M-200 Series	200	4 Circuit	115

RECEPTACLE / CIRCUIT BREAKER KITS AND ACCESSORIES (Sold separately)

CATALOG #	RECEPTACLE	CIRCUIT BREAKER	CONDUCTOR	CONFIGURATION
K5400-520	5-20R Duplex	20 amp, 1 Pole	12 Awg	
K5400-520GR	5-20R Duplex GFI	20 amp, 1 Pole	12 Awg	GFI Rec.
K5400-TT30	TT30R	30 amp, 1 Pole	10 Awg	
K5400-1450	14-50R	50 amp, 2 Pole	8 Awg	

K5400-BRIDGE-1POS Self-grounded one position receptacle bridge with hardware

K5400-BRIDGE-2POS Self-grounded two position receptacle bridge with hardware

K5415 Stabilizer foot with hardware

K5035 Pad mount kit with hardware (see note below)

K5T 5th terminal for 3 or 9 o'clock position

K5193 Wire kit to convert series wired main breaker to parallel

- A maximum of two receptacle / circuit breaker kits can be installed in each power head. Order from above. Other kits available. Consult factory for factory-installed receptacle kits.
- Receptacle / circuit breaker kits include receptacle, circuit breaker, wire, cover plate and mounting screws.
- Receptacle bridge **K5400-BRIDGE-1POS** or **K5400-BRIDGE-2POS** not included with pedestal. Order separately.
- Pedestals are stocked with series wired main circuit breakers. Order **K5193** kit to field convert to parallel main lug circuit breaker. For parallel wired main circuit breakers, change "S" suffix to "P" (Ex.: **U5136-O-100P**).
- **K5415** Stabilizer Foot sold separately. Recommended for double pedestals.
- Pad mount pedestals available. Order **U5138** (single meter) or **U5139** (double meter) prefix. **K5035** pad mount kit required. Order separately.

INTERCHANGEABLE UNIT HUBS



**HUB
ADAPTER PLATE**
(Converts 4" opening to
2½" opening)
S8324



**SMALL "RL" OPENING
(STANDARD)**

SUFFIX	SIZE	MILBANK NO.
WL	1"	A7514
YL	1¼"	A7515
ZL	1½"	A7516
DL	2"	A7517
EL	2½"	A7518

**LARGE "R" OPENING
(HEAVY DUTY)**

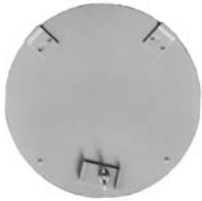
SUFFIX	SIZE	MILBANK NO.
F	3"	A8110
G	3½"	A8111
H	4"	A8112



**REMOVABLE HUB
CLOSING PLATE**

DESCRIPTION	SUFFIX	CAT. #
STANDARD (for -RL opening)	-XL	A7551
LARGE (for -R opening)	-X	A9064

CLOSING COVERS



METAL CLOSING PLATE
(for ringless sockets)
CP-21

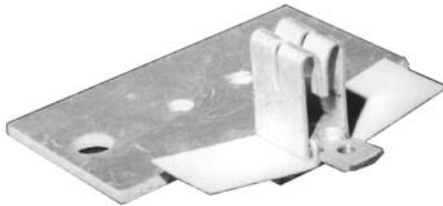


METER CLOSING PLATE
(Grey Plastic)
6003

HUB SUFFIX CHART

O	Plain Top	WL	1"	For -RL Opening
RL	Small Hub Opening	YL	1¼"	For -RL Opening
R	Large Hub Opening	ZL	1½"	For -RL Opening
XL	Small Closing Plate	DL	2"	For -RL Opening
X	Large Closing Plate	EL	2½"	For -RL Opening
RXL	Large Hub Opening adapted to small Closing Plate	F	3"	For -R Opening
RRL	Large Hub Opening adapted to small Hub Opening	G	3½"	For -R Opening
		H	4"	For -R Opening

PEDESTAL EXTENSION UNITS



FOR CONDO METERING BANKS
(125-200 AMP) **K2381**

CATALOG NUMBER	D"	W"	H"
S8988	4 ½"	8 ¾"	15
S3488	6	11	15
S2571	4 ⅛"	10	12
S1848	4 ⅞"	13	15
K4694	6	9	24
K5800	4 ⅛"	9	15



**#K3235
STAKE KIT**
Suitable for
use with
pedestals for
extra support

FIFTH TERMINALS



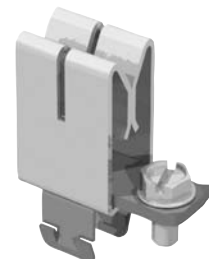
PLUG-IN FIFTH TERMINAL
5T8K2
(Fits in round hole of old
style block)



BOLT-IN FIFTH TERMINAL
5T24R
(Fits in round hole of old
style block)



**HEAVY DUTY JAW
CLAMPING**
K3865



FIFTH TERMINAL
K5T
(Fits in square hole
of new style 200 amp block)

CONNECTOR KITS



SINGLE

For use with 3/8"-16
stud type units only

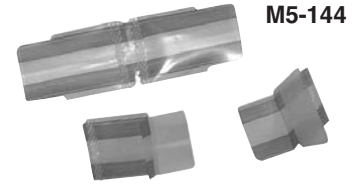
TWIN



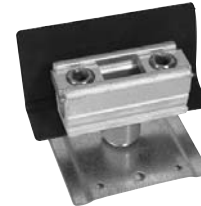
SUFFIX	CATALOG #	(3 per set) – 1 Ø
K1	K1539	6-350 kcmil
K3	K1540	4-600 kcmil or (2) 1/0-250 kcmil
K3L	K1540L	4-600 kcmil or (2) 1/0-250 kcmil Non-rotating
SUFFIX	CATALOG #	(4 per set) – 3 Ø
K5	K3082	6-350 kcmil
K7	K3441	4-600 kcmil or (2) 1/0-250 kcmil

SUFFIX	CATALOG #	(3 per set) – 1 Ø
K2	K1350	6-350 kcmil
K2L	K1350L	6-350 kcmil Non-rotating
K4	K1541	4-600 kcmil
SUFFIX	CATALOG #	(4 per set) – 3 Ø
K6	K3442	6-350 kcmil
K8	K3083	4-600 kcmil

DISCONNECT SLEEVE



M5-144

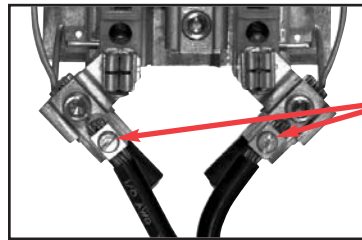

**ISOLATED
NEUTRAL
KIT**
K1047

LOAD TAP CONNECTORS (3 per set)

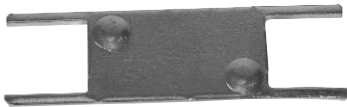
Replaces the **load side** slide-in nut assembly on Milbank 200 amp sockets. Allows for a 100 amp tap location in addition to the #6-350 kcmil load-side connector. **K5022** Includes Safety Barrier Extensions—for applications over 300 VAC.

K4977-INT INTERNAL HEX

K5022-INT INTERNAL HEX



ANTI-INVERSION CLIP



K4802

PLUG-IN BREAKER COMPATIBILITY CHART

AMPS	MILBANK	CUTLER-HAMMER (WESTINGHOUSE)	SIEMENS (ITE)	SIEMENS MURRAY / CROUSE-HINDS	G.E.	SQ-D
125-200	Q / QNR	HQP / BR / WBJ	Q / QN	MD	Q LINE	—
≤ 100	Q	QUICKLAG P / BR / HQP	QP	MP	Q LINE	HOMELINE

SEALING RINGS


SCREW TYPE
MR-4

BUCKLE HASP
MR-8

MILBANK

2-POLE—200 AMP LARGE FRAME—10,000 AIC & 22,000 AIC

AMPS	10,000 AIC PLUG-IN	22,000 AIC PLUG-IN	10,000 AIC PLUG-IN	22,000 AIC PLUG-IN	10,000 AIC BOLT-ON	22,000 AIC BOLT-ON	10,000 AIC BOLT-ON
100	UQFP-100	UQFPH-100	UQFP-M-100	UQFPH-M-100	UQFB-100	UQFBH-100	UQFB-100-X1
125	UQFP-125	UQFPH-125	UQFP-M-125	UQFPH-M-125	UQFB-125	UQFBH-125	UQFB-125-X1
150	UQFP-150	UQFPH-150	UQFP-M-150	UQFPH-M-150	UQFP-150	UQFBH-150	UQFP-150-X1
175	UQFP-175	UQFPH-175	UQFP-M-175	UQFPH-M-175	UQFB-175	UQFBH-175	UQFB-175-X1
200	UQFP-200	UQFPH-200	UQFP-M-200	UQFPH-M-200	UQFB-200	UQFBH-200	UQFB-200-X1

MAXIMUM NUMBER OF CONDUCTORS IN CONDUIT*

TYPE	CONDUCTOR SIZE AWG,MCM	CONDUIT TRADE SIZES (INCHES)									
		1/2	3/4	1	1 1/4	1 1/2	2	2 1/2	3	3 1/2	4
RHW & RHH (without outer covering) THW	14	6	10	16	29	40	65	93	143	192	
	12	4	8	13	24	32	53	76	117	157	
	10	4	6	11	19	26	43	61	95	127	163
	8	1	3	5	10	13	22	32	49	66	85
	6	1	2	3	7	10	16	23	36	48	62
TW THW FEPB (6 thru 2), RHW and RHH (without outer covering) RH, THHW	3	1	1	2	4	6	10	15	23	31	40
	1/0		1	1	2	3	5	8	12	16	21
	2/0		1	1	1	3	5	7	10	14	18
	3/0		1	1	1	2	4	6	9	12	15
	4/0			1	1	1	3	5	7	10	13
	250			1	1	1	2	4	6	8	10
	300			1	1	1	2	3	5	7	9
	350				1	1	1	3	4	6	8
	400				1	1	1	2	4	5	7
	500				1	1	1	1	3	4	6
	600					1	1	1	3	4	5
	700					1	1	1	2	3	4
	750					1	1	1	2	3	4

*This table is for concentric stranded conductors only. For cables with compact conductors refer to N.E.C.

*** ALLOWABLE AMPACITIES OF INSULATED COPPER & ALUMINUM CONDUCTORS (3W IN CONDUIT) 75°C (167°F)**

AMPACITY CORRECTION FACTORS

*CU		AL or Cu-Clad AL	
A	B	A	C
18	—	—	—
16	—	—	—
14	20†	—	—
12	25†	12	20†
10	35†	10	30†
8	50	8	40
6	65	6	50
4	85	4	65
3	100	3	75
2	115	2	90
1	130	1	100
1/0	150	1/0	120
2/0	175	2/0	135
3/0	200	3/0	155
4/0	230	4/0	180
250	255	250	205
300	285	300	230
350	310	350	250
400	335	400	270
500	380	500	310
600	420	600	340
700	460	700	375
750	475	750	385

A = Size: AWG/MCM
 B = Ampere Rating for Insulation Types:
FEPW, RH, RHW, THW, THWN, XHHW, USE, 2W.
 C = Ampere Rating for Insulation Types:
RH, RHW, THW, THWN, XHHW, USE
 (Per NEC table 310-16)

AMBIENT TEMP. C°	CORRECTION FACTOR	AMBIENT TEMP. F°
21 - 25	1.05	70 - 77
26 - 30	1.00	79 - 86
31 - 35	.94	88 - 95
36 - 40	.88	97 - 104
41 - 45	.82	106 - 113
46 - 50	.75	115 - 122
51 - 55	.67	124 - 131
56 - 60	.58	133 - 140
61 - 65	.33	142 - 158
66 - 70	—	160 - 176

Overall ampere ratings of UL Listed Milbank multiple position meter sockets are based on **1993 N.E.C. Manual article 220-32 and ANSI / UL-414** (except where restricted by line connector size). These requirements provide for a diversity factor / demand factor being utilized in determining the overall (main bus / lug) rating of a gang socket. All Milbank UL Listed gang sockets meet or exceed these diversity factor/demand factor requirements. Standard overall ampacity ratings for UL Listed and non UL Listed gang sockets are as shown in the chart below. Ampere ratings of meter sockets are based on the meter socket being wired with 75° C insulated wire conductor, sized in accordance with **Table 310-16** of the **National Electric Code**.

GANG SOCKET OVERALL AMPACITIES

NO. OF METER POSITIONS	100A / POS. AMPACITY	125A / POS. AMPACITY	150A / POS. AMPACITY	200A / POS. AMPACITY
2	200A	200A	200A	200A
3	200A	225A	225A	270A
4	200A	250A	270A	360A
5	225A	285A	338A	450A
6	270A	330A	396A	528A

† Unless otherwise permitted elsewhere in the Code, the overcurrent protection for conductor types marked with an obelisk (†) shall not exceed 15 amps for 14 AWG, 20 amps for 12 AWG, and 30 amps for 10 AWG copper; or 15 amps for 12 AWG and 25 amps for 10 AWG aluminum and copper-clad aluminum after any correction factors for ambient temperature and number of conductors have been applied.

All meter sockets are 600 Volt rated unless otherwise noted.

All meter socket ampacity ratings are continuous duty unless otherwise noted.

IMPORTANT NOTE

In addition to national and local electrical codes, many utilities have specific requirements for metering equipment. Always consult the serving utility for their specifications and requirements prior to ordering or installing Milbank meter mounting equipment.

BEFORE ENERGIZING

- A. Give equipment a thorough visual examination to determine that:
 - 1) No shipping or installation damage exists.
 - 2) Proper clearances have been maintained.
 - 3) All connections have been made.
 - 4) Equipment is clean and dry.
- B. Make a thorough examination to verify:
 - 1) Tightness of all bolted connections (see table below).
 - 2) Manually operate all circuit breakers, switches, relays, etc.
 - 3) Check rigidity of all mountings, bus bars and components.
 - 4) Use test equipment to check continuity of circuitry and integrity of insulation.
- C. All switches and circuit breakers should be in the "off" position.
- D. Verify that manual meter bypass (if applicable) is in non-bypass position.
- E. Install cover and/or close doors.
- F. If installation is not being energized at this time, follow "after-energizing" steps listed below. These steps will secure the installation in case of accidental energization.

WHEN ENERGIZING

- A. Use caution and follow established safety procedures:
 - 1) Wear safety apparel.
 - 2) Use safety equipment.
 - 3) Take action to prevent injury to yourself and others in the event of failure of the installation.
 - 4) Take action to prevent/decrease damage to property in the event of failure of the installation.
 - 5) If you are unsure how to safely energize the installation, get someone who is knowledgeable to do it.

AFTER ENERGIZING

- A. Secure the installation:
 - 1) To prevent accidental contact with energized parts, cover all openings with approved filler devices.
 - 2) To prevent unauthorized access, secure all covers and/or doors with approved security devices.
 - 3) Attach/post information to advise others of potential hazards associated with the installation.

RECOMMENDED TORQUE FOR GENERAL APPLICATIONS*

NOMINAL SIZE	JOINT DESCRIPTION		HEAD TYPE	TORQUE (INCH LBS.)
	SCREW	NUT		
10	BRASS	Brass Nut or Extruded Hole	ALL	20-25 in. lbs.
10	STEEL	CU or AL Busbar $\leq 1/8"$	ALL	25-30 in. lbs.
10	STEEL	Steel Nut or EH; CU or AL Busbar $> 1/8"$	ALL	30-35 in. lbs.
12	STEEL	Aluminum Extruded Hole	ALL	30-35 in. lbs.
12	STEEL	Steel Nut or Extruded Hole	ALL	40-50 in. lbs.
1/4	STEEL	Aluminum Extruded Hole	ALL	40-50 in. lbs.
1/4	STEEL	Steel Nut or EH; CU or AL Busbar	ALL	50-60 in. lbs.
5/16	STEEL	Aluminum Extruded Hole	HEX	60-70 in. lbs.
5/16	STEEL	Steel Nut or EH; CU or AL Busbar	HEX	100-150 in. lbs.
3/8	STEEL	Steel Nut	HEX	150-200 in. lbs.
1/2	STEEL	Steel Nut	HEX	200-250 in. lbs.

*Interior labels typically indicate the required torque for wire connectors and studs, and should be referenced first.

EH: Extruded Hole

CU: Copper

AL: Aluminum

MATERIALS

STEEL QUALITY

The meter equipment listed in this catalog is made of galvanized steel (AISI* G90) to afford the best possible weather proofing. *American Iron and Steel Institute.

STEEL SHEET

16 gauge, galvanized, sheet: 1 1/4 oz./ sq.ft. class zinc-coated.
(AISI G90)

14 gauge, galvanized, sheet: 1 1/4 oz./ sq.ft. class zinc-coated.

ALUMINUM EXTRUSION

Wire-Terminals: Alloy; 6061-T6, Tin-plated for CU/AL wire.

Bus Bar: Alloy; 6101-o & 6063-O

ALUMINUM SHEET

3000 series aluminum sheet, H14, or 5052 series aluminum sheet, H32. Where applicable thicknesses range from .064 — .125

COPPER SHEET & BUS

Electrolytic copper with tin plating in most applications.

INSULATING MATERIALS

- In most units, support bases for current-carrying components are molded from fiberglass reinforced high-strength, track resistant, thermoset polyester molding compounds.
- Clear or black safety shields and polarity barriers are molded from high-strength, track resistant, polycarbonate molding compounds.
- Various sheet insulating materials, as appropriate for the application are utilized in the fabrication of flat, formed and punched component parts and barriers.

FINISH

PROCESS

Light gray "state of the art" electrostatically applied powder paint offers a durable, non-fading finish. For further information concerning the chemical analysis of the weather resistant finish, please contact the factory.

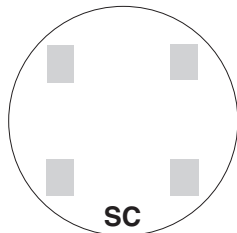
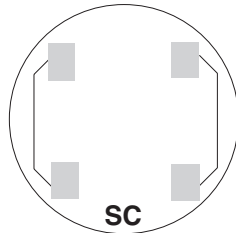
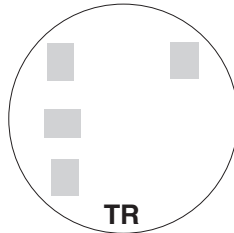
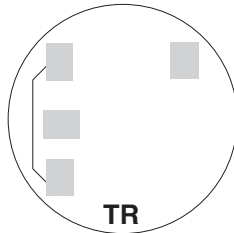
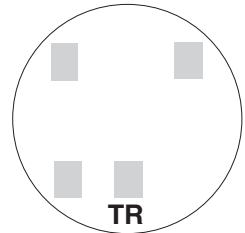
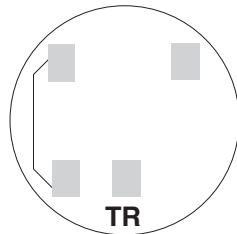
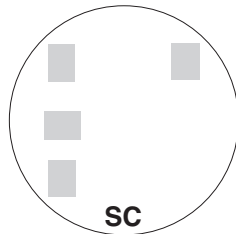
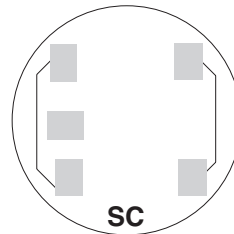
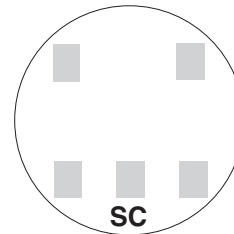
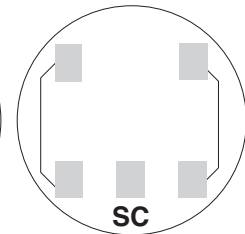
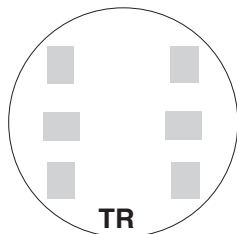
METAL FASTENERS

Zinc-coated with a chromate dip.

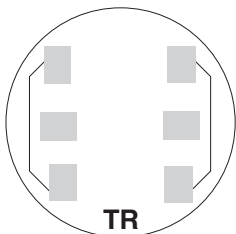
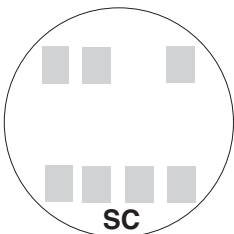
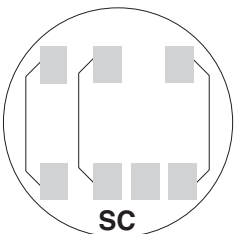
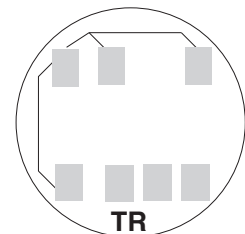
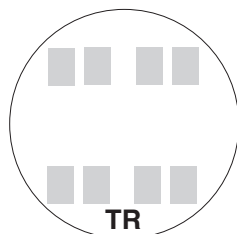
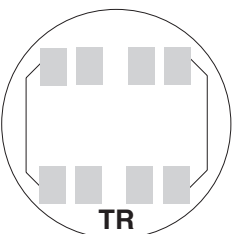
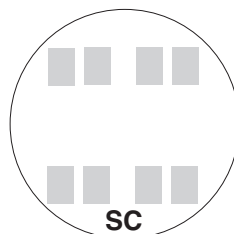
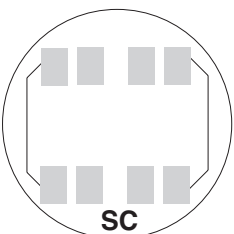
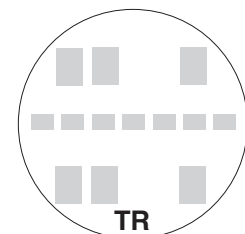
RATING

NEMA RATING

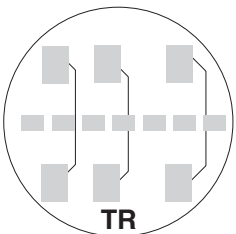
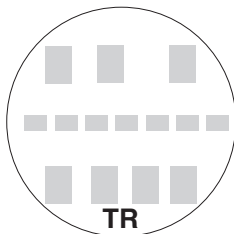
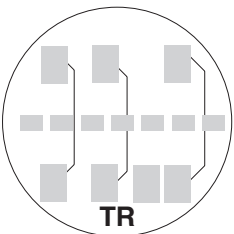
All Milbank meter sockets, CT cans and meter socket / breaker units have a Type 3R rating.


2 and 3-WIRE FORMS
1S & 2S

2 and 3-WIRE FORMS
1S & 2S with BYPASS

2-WIRE FORM 3S
5th Term. 9 o'clock

2-WIRE FORM 3S
with BYPASS

2-WIRE FORM 3S
5th Term. 6 o'clock

2-WIRE FORM 3S
with BYPASS

2 ELEMENT
3-WIRE NETWORK
FORM 12S 5th
TERM. 9 o'clock

2 ELEMENT 3-WIRE
NETWORK FORM 12S
with BYPASS
5th Term. 9 o'clock

2 ELEMENT
3-WIRE NETWORK
FORM 12S 5th
TERM. 6 o'clock

2 ELEMENT 3-WIRE
NETWORK FORM 12S
with BYPASS
5th Term. 6 o'clock


3-WIRE FORM 4S


3-WIRE FORM 4S
WITH BYPASS

2 or 3 ELEMENT
3Ø4W Y or Δ
Y FORM 14S
Δ FORM 15S

2 or 3 ELEMENT
3Ø4W Y or Δ
FORMS 14S & 15S
with BYPASS

2 ELEMENT
3Ø4W Y or Δ
Y FORM 7S
Δ FORM 24S
with BYPASS

2 ELEMENT
2Ø3W, 2Ø4W, 3Ø3W
FORM 5S

2 ELEMENT 2Ø3W,
2Ø4W, 3Ø3W
FORM 5S with
BYPASS

2 ELEMENT
2Ø3W, 2Ø4W, 3Ø3W
FORM 13S

2 or 3 ELEMENT
2Ø3W, 2Ø4W, 3Ø3W
FORM 13S with
BYPASS

2 or 3 ELEMENT
3Ø4W Y or Δ
Y FORM 9S
Δ FORM 8S

TR = TRANSFORMER RATED
SC = SELF CONTAINED


2 or 3 ELEMENT
3Ø4W Y or Δ
FORMS 8S & 9S
with BYPASS

2 ELEMENT
3Ø4W Y
FORM 6S

2 ELEMENT
3Ø4W Y
FORM 6S
with BYPASS

MISC.

WATTHOUR METERS—STANDARD FORMS—TRANSFORMER RATED OR SELF-CONTAINED

Utility requirements for this equipment may vary. Always consult the serving utility for their requirements before ordering or installing equipment in this catalog.

Other quality products available from Milbank

Commercial Pedestals



- Attractive • Easy to install
- Secure • Cost effective



**Un-
Strut Your
Stuff...**

816.483.5314 phone
816.483.6357 fax
www.milbankmfg.com
ComPed 04/05 (2.5K)

MILBANK®



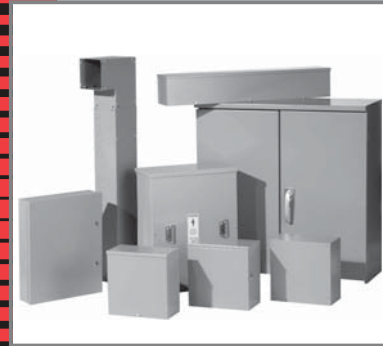
Commercial Electrical Enclosures

2006 PRICE LIST

Effective June 26, 2006

Supersedes and cancels all previous Milbank lists.
All prices listed within are subject to change without notice.

rev. 7-27-06



MILBANK MFG. CO.

4801 Deramus • PO Box 419028
Kansas City, MO 64141-6028
Tel: 816.483.5314
Fax: 816.483.6357
www.milbankmfg.com

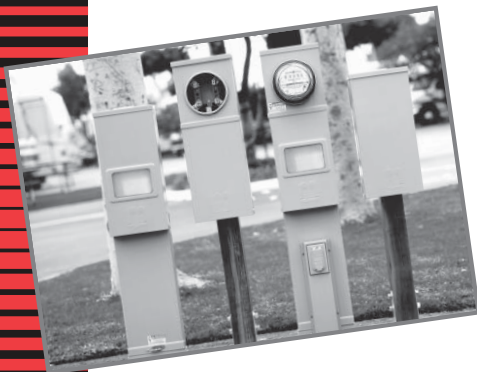
MILBANK®



Recreational Vehicle Park Electrical Products & Accessories

Millennium Series

INCLUDES REPLACEMENT PARTS



MILBANK®



In addition to your local utility's meter mounting equipment, Milbank also manufactures supporting products, such as...

**Air Conditioner Disconnects
Hot Tub Disconnects
RV/Mobile Home Power Outlets
Terminal Boxes
Temporary Power Outlets
Commercial Pedestals
Commercial Enclosures
CT Enclosures
Circuit Breakers
Distribution Unit Substations
Enclosed Circuit Breakers
Safety Switches
Test Switches**

**Contact your local distributor or go to
www.milbankmfg.com
to find additional product literature.**

MILBANK®
www.milbankmfg.com



CAT. NO.	PG	CAT. NO.	PG	CAT. NO.	PG
6003	.22	MR-4	.23	U7021-RL-TG-KK	.8
5T24R	.22	MR-8	.23	U7040-RL-TG-KK	.8
5T8K2	.22	NU8980-O-100-KK	.19	U7375-RL-KK	.18
A7514	.22	NU8980-O-100-KK-LP	.19	U7487-RL-TG-KK	.7
A7515	.22	NU8980-O-200-KK	.19	U7607-RL-200-KK	.18
A7516	.22	NU8980-O-200-KK-LP	.19	U8436-O	.16
A7517	.22	S1848	.22	U8949-RL-TG-KK	.8
A7518	.22	S2291-TO	.15	U9107-O	.17
A7551	.22	S2571	.15, 22	U9108-O	.17
A8110	.22	S3488	.22	U9550-RL	.9
A8111	.22	S8324	.22	U9551-O	.9
A8112	.22	S8988	.22	U9700-RRL	.9
A9064	.22	U1252-X-KK	.12	U9701-O	.9
CP-21	.22	U1253-X-KK	.12	UQFB-100	.37
K1047	.23	U1254-X-KK	.12	UQFB-100-X1	.37
K1350	.14, 23	U1255-X-KK	.12	UQFB-125	.37
K1350L	.23	U1256-X-KK	.12	UQFB-125-X1	.37
K1539	.14, 23	U1748-O-WI	.20	UQFB-150	.37
K1540	.14, 23	U1779-RRL	.10	UQFB-150-X1	.37
K1540L	.23	U1980-O-KK	.8	UQFB-175	.37
K1541	.14, 23	U2594-X-K7-INV	.11	UQFB-175-X1	.37
K2381	.15, 22	U2732-XT-PED	.13	UQFB-200	.37
K3082	.23	U2733-XT-PED	.13	UQFB-200-X1	.37
K3083	.23	U2734-XT-PED	.13	UQFBH-100	.37
K3235	.22	U2852-X-KK-K1-PED	.14	UQFBH-125	.37
K3441	.23	U2853-X-KK-K1-PED	.14	UQFBH-150	.37
K3442	.23	U2854-X-KK-PED	.14	UQFBH-175	.37
K3865	.22	U2855-X-KK-PED	.14	UQFBH-200	.37
K4509	.23	U2856-X-KK-PED	.14	UQFP-100	.37
K4694	.22	U2862-X-KK-K1-PED	.14	UQFP-125	.37
K4695	.22	U2863-X-KK-K1-PED	.14	UQFP-150	.37
K5035	.21	U2864-X-KK-PED	.14	UQFP-175	.37
K5086	.22	U2865-X-KK-PED	.14	UQFP-200	.37
K5193	.21	U2866-X-KK-PED	.14	UQFPH-100	.37
K5400-1450	.21	U3000-O-K3L-K2L	.10	UQFPH-125	.37
K5400-520	.21	U3800	.5	UQFPH-150	.37
K5400-520GR	.21	U3803	.5	UQFPH-175	.37
K5400-BRIDGE-1POS	.21	U3806	.5	UQFPH-200	.37
K5400-BRIDGE-2POS	.21	U3822-20GR	.6	UQFPH-M-100	.37
K5400-TT30	.21	U3849-O-2/200-INV	.20	UQFPH-M-125	.37
K5415	.21	U4881-O	.6	UQFPH-M-150	.37
K5800	.22	U4881-O-50GB	.6	UQFPH-M-175	.37
K5T	.21, 22	U4881-O-60GB	.6	UQFPH-M-200	.37
L572-XL-KK	.12	U5136-O-100S	.21	UQFP-M-100	.37
L573-XL-KK	.12	U5136-O-200S	.21	UQFP-M-125	.37
L574-XL-KK	.12	U5136-O-200S/22	.21	UQFP-M-150	.37
L575-XL-KK	.12	U5137-O-100S	.21	UQFP-M-175	.37
L576-XL-KK	.12	U5137-O-200S	.21	UQFP-M-200	.37
M5-144	.23	U5137-O-200S/22	.21		

NOTES

Lined area for notes.

Meter Mounting Equipment & More!

Commercial Electrical Enclosures

Residential & Commercial Metering

Commercial Meter Pedestals

Disconnect Devices

Current Transformer Enclosures

RV/MH Pedestals

Temporary Power Outlets

Circuit Breakers

Distribution Unit Substations

Enclosed Circuit Breakers

Safety Switches

Test Switches



REPRESENTATIVE

Callas/Kingsley

845 Lively Boulevard

Wood Dale, IL 60191

Tel: 630-595-7887 Fax: 630-595-6922

www.ckelectricalsales.com

MILBANK MFG. CO.

PO Box 419028

Kansas City, MO 64141-0028

Tel: 816-483-5314 Fax: 816-483-6357

Toll Free: 877-483-5314

www.milbankmfg.com

MILBANK®



www.milbankmfg.com

NIPSCO 11/06 (1K)