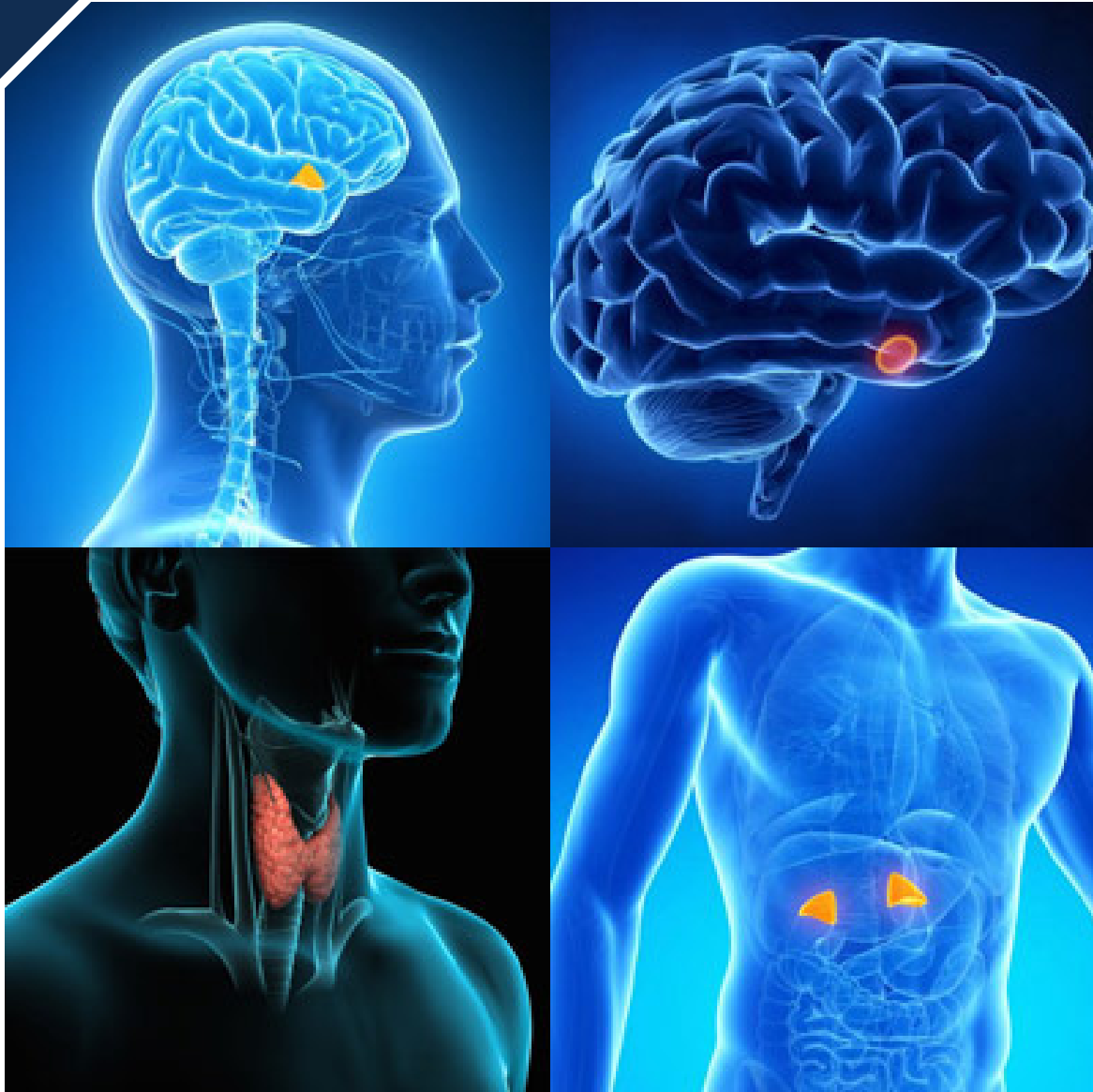


CME
A MAXIMUM OF 11.5
AMA PRA Category 1 Credits™

UC DAVIS
HEALTH



44th Annual UC Davis Health
Diabetes and Endocrinology Symposium

Friday, October 12 - Saturday, October 13, 2018

 **Hilton**
Hilton Sacramento Arden West

UC DAVIS
Conference and Event Services
116 A Street
Davis, CA 95616
(530) 747-3828
events@ucdavis.edu

SPONSORED BY:
UC DAVIS HEALTH
Office of Continuing Medical Education
Division of Endocrinology,
Diabetes and Metabolism
Department of Internal Medicine

Register online at <http://conferences.ucdavis.edu/diabetes>

Diabetes & Endocrinology Symposium

Friday, October 12, 2018

7:00 – 7:59 am	Registration, Breakfast and Visit Exhibits	1:00 – 1:50	Afternoon Keynote Speaker Diabetes Medications: Update on what effect they have on the kidneys. <i>Shubha Ananthakrishnan, MD</i>
8:00 – 8:10	Welcome and Review of Course Objectives <i>Sidika Karakas, MD</i>	1:50 – 2:30	Using Anti-Hyperglycemic Medications Sensibly When “mixing and matching”, what is the best combination? <i>John Yoon, MD</i>
8:15 – 9:00	Insulin and Insulin Pumps <i>Pamela Prescott, MD</i>	2:30 – 3:10	Dietary Extremes Can a vegan or ketogenic diet prevent type 2 diabetes? Can they be used to control glucose levels and improve diabetes control? <i>Julie Durette, RD, CDE</i> <i>Marlia Braun, PhD, RD</i>
9:00 – 9:50	Morning Keynote Speaker Why do we sleep? What effect does sleep deprivation have on our health? What is good sleep hygiene? <i>Kimberly Hardin, MD</i>	3:10 – 3:30	Break
9:50 – 10:20	Continuous Glucose Monitoring There are many new devices, the best way to use them. <i>Caroline Lenaerts, RN, CDE, MPH</i>	3:30 – 5:00	Diabetes Case Studies <ul style="list-style-type: none">• Which anti-hyperglycemic medications would be appropriate at different stages of CKD?• Adding on anti-hyperglycemic medications. Matching diet to patient lifestyle. Can a vegan or ketogenic diet be incorporated?• Sample food lists and menus for a vegan or ketogenic diet.
10:20 – 10:40	Break and Visit Exhibits		
10:40 – 12:00	Diabetes Case Studies <ul style="list-style-type: none">• Using CGM – demonstration• Diabetes case studies		
12:00 – 1:00 pm	LUNCH and Visit Exhibits		

Saturday, October 13, 2018

7:00 – 7:59 am	Registration, Breakfast and Visit Exhibits	10:05 – 10:35	Break and Visit Exhibits
8:00 – 8:05	Welcome and Review of Course Objectives <i>Sidika Karakas, MD</i>	10:35 – 11:15	PCOS: What are the roles of primary care doctor and endocrinologist? <i>Sidika Karakas, MD</i>
8:05 – 8:45	Thyroid Testing: Which tests to order and when? <i>Aili Guo, MD</i>	11:15 – 12:00pm	Advances in Infertility Treatment: From the perspective of reproductive gynecologists <i>Pravin Goud, MD, PhD</i>
8:45 – 9:25	Endocrine Approach to Common Hypoglycemia: Case based discussion <i>Sonal Phatak, MD</i>	12:00 – 12:30	Panel discussion—E Consults
9:25 – 10:05	Controversies in Endocrinology: Adrenal fatigue and adult growth hormone deficiency <i>Dana Sheely, MD</i>	12:30 – 1:00	Panel discussion—Questions from the audience
		1:00	Adjourn

Faculty

COURSE CO-CHAIRS

Pamela Prescott, MD
Professor
Division of Endocrinology, Diabetes, and Metabolism
Department of Internal Medicine
UC Davis School of Medicine

Sidika Karakas, MD
Professor and Chief
Division of Endocrinology, Diabetes, and Metabolism
Department of Internal Medicine
UC Davis School of Medicine

UC DAVIS HEALTH FACULTY

Shubha Ananthakrishnan, MD
Associate Professor
Division of Nephrology
Department of Internal Medicine

Jameson Azul, MD
Clinical Fellow
Division of Endocrinology, Diabetes and Metabolism
Department of Internal Medicine

Berit Bagley, BSN, CDE
UC Davis Inpatient Endocrinology/
Glycemic Control Team

Marlia Braun, PhD, RD

Clinical Specialist, Virta Health

William Cushard Jr., MD, FACP
Volunteer Clinical Faculty
Division of Endocrinology, Diabetes and Metabolism
Department of Internal Medicine
Endocrinologist
Mercy General Hospital-Sacramento
Sutter Medical Center-Sacramento

Julie Durette, RD, CDE
Senior Dietician
Division of Endocrinology, Diabetes, and Metabolism
Department of Internal Medicine

Pravin Goud, MD, PhD
Volunteer Clinical Faculty
Reproductive Endocrinology & Infertility
Department of Obstetrics & Gynecology
Physician
California IVF Fertility Center

Aili Guo, MD
Associate Professor
Division of Endocrinology, Diabetes and Metabolism,
Department of Internal Medicine

Kimberly Hardin, MD
Professor and Director
Sleep Medicine Fellowship Program
Division of Pulmonary & Critical Care
Department of Internal Medicine

Kent Ishihara, MD
Volunteer Clinical Faculty
Division of Endocrinology, Diabetes and Metabolism
Department of Internal Medicine
Endocrinologist
Kaiser Permanente

Caroline Lenaerts, RN, CDE, MPH
Nurse Diabetes Educator
Division of Endocrinology, Diabetes and Metabolism
Department of Internal Medicine

Mark Moriwaki, MD
Associate Physician Diplomate
Division of Endocrinology, Diabetes and Metabolism
Department of Internal Medicine

Michael Okimura, MD
Volunteer Clinical Faculty
Division of Endocrinology, Diabetes and Metabolism
Department of Internal Medicine
Endocrinologist
Kaiser Permanente

Sonal Phatak, MD
Associate Professor
Division of Endocrinology, Diabetes, and Metabolism
Department of Internal Medicine

Alison Semrad, DO
Associate Professor & Fellowship Director
Division of Endocrinology, Diabetes and Metabolism
Department of Internal Medicine

Dana Sheely, MD
Assistant Professor
Division of Endocrinology, Diabetes, and Metabolism
Department of Internal Medicine

Ajay Sood
Professor
Division of Endocrinology, Diabetes and Metabolism
Department of Internal Medicine
Endocrinologist
VA Northern California Health System

Prasanth Surampudi, MD
Associate Professor
Division of Endocrinology, Diabetes and Metabolism
Department of Internal Medicine

Arthur Swislocki
Professor
Division of Endocrinology, Diabetes and Metabolism
Department of Internal Medicine
Assistant Chief, Medical Services
Chief Endocrinology Section
VA Northern California Health System

Charity Tan, MSN, ACNP-BC
Nurse Practitioner
UC Davis Inpatient Endocrinology/
Glycemic Control Team

Kearnan Welch, DO
Clinical Fellow
Division of Endocrinology, Diabetes and Metabolism
Department of Internal Medicine

Wei Yang, MD
Clinical Fellow
Division of Endocrinology, Diabetes and Metabolism
Department of Internal Medicine

John Yoon, MD
Assistant Professor
Division of Endocrinology, Diabetes, and Metabolism
Department of Internal Medicine

Arta Zowghi, DO
Clinical Fellow
Division of Endocrinology, Diabetes and Metabolism
Department of Internal Medicine

Register online at <http://conferences.ucdavis.edu/diabetes>

Conference Information

TARGET AUDIENCE

This activity is designed for primary care providers, community physicians, family practice, internal medicine, nurse practitioners, physician assistants, registered nurses, diabetes educators, dietitians, and pharmacists who provide interdisciplinary care.

COURSE OBJECTIVES

Thyroid testing: Which tests to order and when?

Attendees will:

- Learn the most informative for diagnosing hyperthyroidism and hypothyroidism, and identifying their underlying causes such as Grave's disease, silent subacute thyroiditis, thyroid nodule, Hashimoto's disease
- Recognize the unhelpful and unnecessary tests to avoid
- Learn the most cost-effective testing approaches for different thyroid disorders

Endocrine Approach to Common Hypoglycemia: Case based discussion

Attendees will:

- Learn the common causes of hypoglycemia such as renal failure, liver failure, bariatric surgery and malnutrition
- Recognize the best testing algorithm to work up of hypoglycemia
- Learn how to treat different causes of hypoglycemia

Controversies in Endocrinology: Adrenal Fatigue and Adult Growth Hormone deficiency

Attendees will:

- Appreciate the medical and public views on these subjects to be able to address the questions and concerns of their patients
- Learn how to recognize the patients who may have significant pathology and how to test them
- Learn when treatment is necessary and how to treat

PCOS: What are the roles of primary care doctor and endocrinologist?

Attendees will:

- Learn how to correctly diagnose PCOS by using cost-effective testing
- Recognize effective treatments for different presentations of PCOS
- Learn how to prepare and when to refer the patients to reproductive gynecologist

Advances in Infertility Treatment: From the perspective of reproductive gynecologists

Attendees will:

- Learn how to determine different causes of infertility
- Recognize appropriate referral algorithms
- Appreciate the technology available to reproductive gynecologists and their success rates

LECTURES

Electronic access to course lectures will be made available to all conference attendees. Please note that a hard copy syllabus will not be available for this conference.

ACCREDITATION

The University of California, Davis Health is accredited by the Accreditation Council for Continuing Medical Education (ACCME) to provide continuing medical education for physicians.



CREDIT DESIGNATION

Physician Credit: University of California, Davis, Health designates this live activity for a maximum of 11.5 *AMA PRA Category 1 Credits™*. Physicians should only claim credit commensurate with the extent of their participation in the activity.

AAFP (Family Practice) Credit: This Live activity, 44th Annual UC Davis Health Diabetes and Endocrinology Symposium, with a beginning date of 10/12/2018, has been reviewed and is acceptable for up to 11.50 Prescribed credit(s) by the American Academy of Family Physicians. Physicians should claim only the credit commensurate with the extent of their participation in the activity.

AMA PRA Category 1 Credits™ acceptable for other health care providers

Dietitian: Registered dietitians attending this program can utilize hours earned for continuing education. Live programs can be logged as 1 CPEU per hour.

Nurse: For the purpose of recertification, the American Nurses Credentialing Center accepts *AMA PRA Category 1 Credits™* issued by organizations accredited by the ACCME. For the purpose of relicensure, the California Board of Registered Nursing accepts *AMA PRA Category 1 Credits™* (report hours of credit and fill in "CME Category 1" for the provider number).

Pharmacist: The California Board of Pharmacy accepts coursework which meets the standard of relevance to Pharmacy practice and has been approved for *AMA PRA Category 1 Credit™*.

Physician Assistant: The National Commission on Certification of Physician Assistants (NCCPA) states that *AMA PRA Category 1 Credits™* are acceptable for continuing medical education requirements for recertification.

Registration

REGISTRATION

Registration fee includes conference meals, course materials and CME certificate.

Attendee Type	Early Bird until 09/12/2018	Regular 09/13/2018-Onsite
Physicians	\$330	\$380
Other Healthcare Professionals	\$290	\$340

Register online at: <http://conferences.ucdavis.edu/diabetes>. For check payment, please see registration and mailing instructions on last page.

Please provide an email address that you check frequently. Your email address is used for critical information, including registration confirmation, evaluation, and certificate.

CANCELLATION AND REFUND POLICY

A refund of tuition, less \$75, administrative fee, will be allowed if requested in writing by **September 12, 2018**. No refunds will be provided after this date.

ELECTRONIC EVALUATION AND CREDIT

The course lectures and evaluation will be available online for 14 days after the last day of the conference. Once the online survey is completed, your certificate will be sent via email within 30 days post conference.

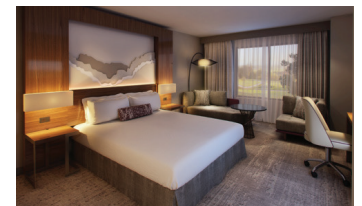
HOTEL ACCOMMODATIONS



Hilton Sacramento Arden West

2200 Harvard Street
Sacramento, CA 95815
(916)922-4700

<http://www.sacramentoardenwest.hilton.com>



A block of rooms is being held for conference participants at a rate of **\$129 single or double occupancy** plus hotel and sales tax (extension dates may be available). **After 9/20/18, reservations will be on a space and rate available basis.**

Reservations should be made directly with the hotel. Please be aware that a limited number of rooms have been reserved and the hotel will likely sell out prior to the reservations deadline of 9/20/18.

By staying at the host hotel, you help the University of California, Davis meet its contractual obligations with the Hilton Hotel Arden West and keep future registration fees reasonable. Please consider that when making your accommodation decisions. We encourage you to stay at the host hotel.

Layered clothing is recommended as the meeting room temperature may be uncomfortable for some, depending on personal preferences. If you have any special needs due to a disability as specified in the Americans with Disabilities Act, please contact UC Davis Conference and Event Services at events@ucdavis.edu, so we may make the necessary accommodations for you.



LAKE TAHOE AND NAPA VALLEY

Conveniently located two hours southwest of Lake Tahoe, site of the best winter recreation in the Sierras, and an hour east of Napa Valley, known for hillside vineyards and the world renowned wine growing region, Sacramento is an ideal hub to add on visits to both of these popular locales.

AIR TRAVEL TO SACRAMENTO INTERNATIONAL AIRPORT (SMF)

We have partnered with United Airlines to offer travel discounts to the Diabetes and Endocrinology Symposium.

Visit www.united.com/meetingtravel and enter **ZF24317762** in the Offer Code box.

You may also call United Meeting Reservation Desk at 800-426-1122 Mon-Fri 8am – 10pm ET and Sat/Sun 8am – 6pm ET.

Booking fees are waived for Meeting reservations. Please note that travel must be booked between **10/09/2018** and **10/16/2018**, in order to receive the discount.

Register online at <http://conferences.ucdavis.edu/diabetes>

Mail In Registration

DIABETES & ENDOCRINOLOGY SYMPOSIUM

Friday, October 12 - Saturday, October 13, 2018

REGISTRATION FEES (Receipt/Confirmation will be mailed within two weeks)

	Early Bird until 09/12/2018	Regular 09/13/2018-Onsite
Physician	<input type="checkbox"/> \$330	<input type="checkbox"/> \$380
Other Healthcare Professionals	<input type="checkbox"/> \$290	<input type="checkbox"/> \$340

COURSE LECTURES

Electronic access to the course lectures will be made available to all conference attendees. Please note that a hard copy syllabus will not be available for this conference.

FOR REGISTRANTS PAYING BY CHECK, PLEASE REGISTER ONLINE:

<http://conferences.ucdavis.edu/diabetes>

Use the code CHECK to register without submitting a form of payment.

Please make check payable to: UC REGENTS

Please mail check to:

UC Davis Conference and Event Services
116 A Street
Davis, CA 95616
ATTN: Diabetes

Registrations will be confirmed upon receipt of payment.

Questions: events@ucdavis.edu or 530-747-3828

FOR FURTHER INFORMATION

UC DAVIS

Conference and Event Services

Carla Datanagan
Conference Manager
116 A Street
Davis, CA 95616
(530) 747-3828
events@ucdavis.edu

UC DAVIS CME MISSION STATEMENT

To educate health care providers through evidence-based activities that emphasizes advances in medicine, new medical technology, biomedical research, and changes in healthcare delivery to improve clinical outcomes.

UC DAVIS CME VISION

Providing medical education for health care professionals to improve patient care.

BROCHURE ART CREDIT

Brochure images courtesy of Accreditation Council for Continuing Medical Education, UC Davis Public Affairs, and Google images.



Register online at <http://conferences.ucdavis.edu/diabetes>