
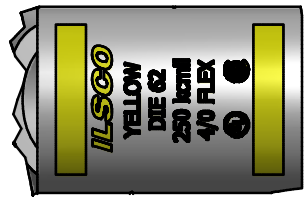
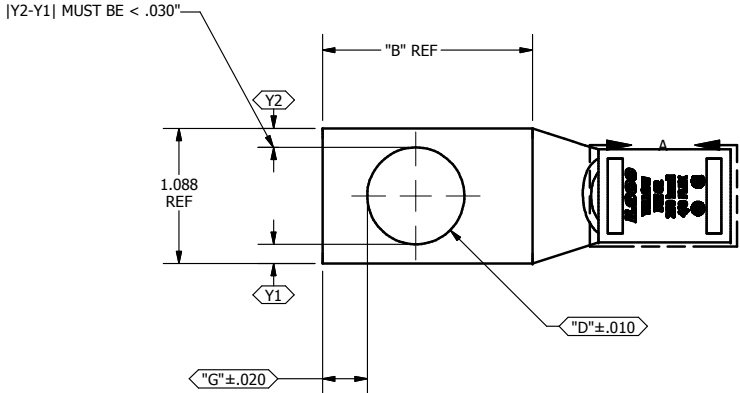


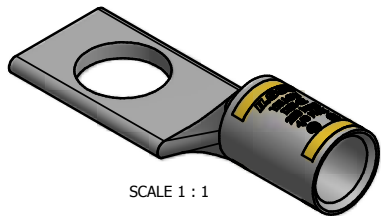
SCREW:N/A	MATERIAL: L111525, CDA-122 CU	CELL: CSP	TOLERANCES-UNLESS OTHERWISE SPECIFIED 2 PL. DEC. ±.015 TRUE C.L. ±.015 3 PL. DEC. ±.015 ANGLES ±1	DWG. NO. Y1111-S	
CAT. NO.: SEE CHART	PLATING: EL-TIN	STUFFER SHT.: FORM 157		SHEET 1 OF 1	
MASS: SEE CHART	MARKING: SEE CHART		DRAWN BY: DW	SCALE: 1:1	
SURFACE AREA:			DATE: 8/6/2007	SIZE: B	

REV.	DESCRIPTION
F	

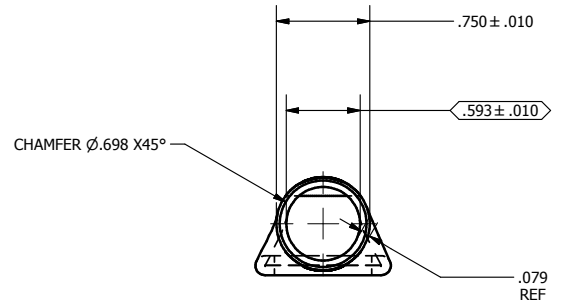
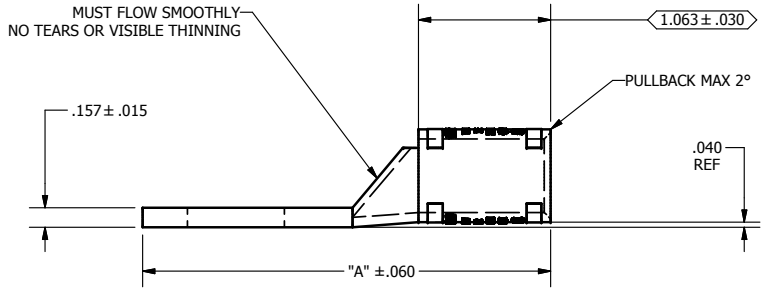


DETAIL A, SCALE 2 : 1
TOP AND BOTTOM INK MARKINGS ARE IDENTICAL
INK COLOR: YELLOW
PER SPEC #: F921

CAT #: SEE CHART BELOW



SCALE 1 : 1



Part Number	Catalog Number	"A"	"B"	"D"	"G"	TANG MARKING
Y1111C36T	CSWS-250-14	2.469	0.875	0.281	0.180	ILSCO, C-250-14, 250 kcmil, 4/0 FLEX, DIE 62, UL, CSA
Y1111C47T	CSWS-250-516	2.469	0.875	0.343	0.180	ILSCO, CSWS-250-516, 250 kcmil, 4/0 FLEX, DIE 62, UL, CSA
Y1111C46T	CSWS-250-38	2.469	0.875	0.406	0.221	ILSCO, CSWS-250-38, DIE 62, 250 kcmil, 4/0 FLEX, UL, CSA
Y1111C42T	CSWS-250-12	2.844	1.250	0.562	0.265	ILSCO, CSWS-250-12, DIE 62, 250 kcmil, 4/0 FLEX, UL, CSA
Y1111C43T	CSWS-250-58	3.031	1.437	0.656	0.343	
Y1111C44T	CSWS-250-34	3.281	1.687	0.781	0.359	ILSCO, CSWS-250-34, DIE 62, 250 kcmil, 4/0 FLEX, UL, CSA
Y1111C45T	CSWS-250-78	3.531	1.937	0.906	0.437	
Y1111C87T	CSWS-250-716	2.594	1.000	0.468	0.235	ILSCO, CSWS-250-716, 250 kcmil, 4/0 FLEX, DIE 62, UL, CSA