

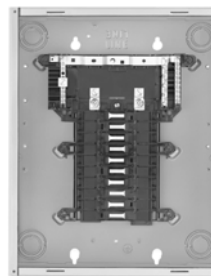
**1Ø3W Load Centers, 120/240 Vac, UL Listed**

**Table 1.16: Main Lugs (Order QO, QOT, QO-EPD, QO-GFI, QO-AFI, and QO-PL branch circuit breakers from pages 1-2 and 1-3)**

Mains Rating	Spaces	Max. 1P Circuits▲	Max. Tandem Circuit Breakers	\$ Price (Interior, Box and Cover)	Load Center Box and Interior		Indoor Cover with Door (Order Separately)			Main Wire Size AWG/kcmil		Equipment Ground Bar Kit (Order Separately)		Box No. See Page 1-17
					Cat. No.	\$ Price	Flush Cat. No.	Surface Cat. No.	\$ Price	Al	Cu	Cat. No.	\$ Price	
<b>Fixed Mains—Factory-Installed Main Lugs—10 kA Short Circuit Current Rating ■</b>														
30 A	2	2	0	41.70	QO2L30S◆★	41.70	Cover Included—Without Door			12-10	14-10	PK3GTA1	11.40	1
70 A	2	4	2	69.00	QO24L70F/S▼△	69.00	Cover Included—Without Door			12-3	14-4	PK4GTA	10.80	2
				87.00	QO612L100F/S▼□	87.00	Cover Included—Without Door			8-1		PK7GTA	11.70	4
	6	12	6	90.00	QO612L100DF/S▼□	90.00	Cover Included—With Door			8-1		PK7GTA	11.70	4
				131.00	QO816L100F/S▼□	131.00	Cover Included—Without Door			8-1		PK7GTA	11.70	4
100 A	8	16	8	143.00	QO816L100DF/S▼□	143.00	Cover Included—With Door			8-1		PK7GTA	11.70	4
				111.00	QO612L100DF/SCU▼□◇	111.00	Cover Included—With Door			8-1		PK7GTA	11.70	4
	6	12	6	174.00	QO816L100DF/SCU▼□◇	174.00	Cover Included—With Door			8-1		PK7GTA	11.70	4
125 A	4	8	4	93.00	QO148L125GF/S▼★	93.00	Cover Included—Without Door			12-2/0	14-2/0	PK7GTA*		21
<b>Convertible Mains—Factory-Installed Main Lugs—65 kA Short Circuit Current Rating QOM1 Main Frame Size—Convertible to Main Circuit Breaker—Cu Bus ▼</b>														
125 A	12	12	0	196.70	QO112L125G	159.00	QOC16UF	QOC16US	37.70	6-2/0		PK9GTA*	6	
	12	24	12	235.70	QO11224L125G	198.00	QOC16UF	QOC16US	37.70			PK15GTA*	6	
	16	16	0	255.70	QO116L125G	218.00	QOC24UF	QOC24US	37.70			PK12GTA*	7	
	16	24	8	300.70	QO11624L125G	263.00	QOC24UF	QOC24US	37.70			PK15GTA*	7	
	20	20	0	271.70	QO120L125G	234.00	QOC24UF	QOC24US	37.70			PK15GTA*	7	
	20	24	4	370.70	QO12024L125G	333.00	QOC24UF	QOC24US	37.70			PK15GTA*	7	
	24	24	0	381.70	QO124L125G	344.00	QOC24UF	QOC24US	37.70			PK15GTA*	7	
32	32	0	434.60	QO132L125G	395.00	QOC32UF	Use Flush	39.60	PK23GTA, LK100AN*	8				
<b>Convertible Mains—Factory-Installed Main Lugs—65 kA Short Circuit Current Rating, QOM2 Main Frame Size—Convertible to Main Circuit Breaker—Cu Bus ▼</b>														
150 A	20	30	10	419.00	QO12030L150G	332.00	QOC30UF	QOC30US	87.00	6-250		PK23GTA, LK100AN*	9	
	24	24	0	431.00	QO124L150G	344.00	QOC30UF	QOC30US	87.00			PK15GTA*	9	
	30	30	0	437.00	QO130L150G	350.00	QOC30UF	QOC30US	87.00			PK23GTA, LK100AN*	9	
200 A	12	12	0	353.00	QO112L200G	266.00	QOC30UF	QOC30US	87.00	6-250		PK15GTA*	9	
	24	36	12	819.00	QO12436L200FT◆	732.00	QOC40UF	QOC40US	87.00			PK23GTA, LK100AN*	10	
	30	30	0	494.00	QO130L200G	407.00	QOC30UF	QOC30US	87.00			PK23GTA, LK100AN*	9	
	30	40	10	554.00	QO13040L200G	467.00	QOC30UF	QOC30US	87.00			PK23GTA, LK100AN*	9	
	40	40	0	746.00	QO140L200G	659.00	QOC40UF	QOC40US	87.00			PK23GTA, LK100AN*	10	
	40	60	20	944.00	QO14060L200G	857.00	QOC40UF	QOC40US	87.00			(2) PK15GTA*	10	
42	52	10	921.00	QO14252L200G	810.00	QOC42UF	QOC42US	111.00	(2) PK15GTA*	11				
225 A	42	42	0	828.00	QO142L225G	717.00	QOC42UF	QOC42US	111.00	6-300		PK23GTA, LK100AN*	11	
<b>Fixed Mains—Factory-Installed Main Lugs—65 kA Short Circuit Current Rating ▼</b>														
400 A	30	30	0	1641.00	QONQ30LS400 (Int) MH50 (box)◆	1080.00 75.00	NC50NQVF	NC50NQVS	486.00	(1) 1/0-750 or (2) 1/0-300		PK27GTA◆ or PK15GTA6	33.80	15
400 A	42	42	0	1746.00	QONQ42LS400 (Int)◆ MH50 (box)	1185.00 75.00	NC50NQVF	NC50NQVS	486.00	(1) 1/0-750 or (2) 1/0-300		PK15GTA6	53.00	15

Above listings through 200 A mains rating meet Federal Specification W-P-115C as Type 1, Class 2.

- ▲ Maximum single pole branch circuits utilizing QO and/or QOT circuit breakers.
- UL short circuit current rating depends on lowest interrupting rating of circuit breaker installed.
- ◆ Will not accept QO-EPD or Qwik-Gard® QO-GFI or QO-AFI circuit breakers.
- ★ Mains rated 25 A when Al wire is used.
- ▼ Order F for flush device or S for surface device.
- △ Use 10 AWG maximum size wire for GFI and AFI circuit breakers.
- 70 A Max. branch circuit breaker and 70 A max. back fed main circuit breaker.
- ◇ CU indicates copper bus.
- ☆ Copper bus.
- ▽ UL Listed 5000 A short circuit current rating for corner grounded Delta systems. Use QO-H circuit breakers only.
- ◆ Supplied with feed-thru lugs.
- ◆ Factory-included.
- ◆ Interior only, order box separately.
- ◆ PK27GTA includes a 6-2/0 AWG Al/Cu lug.
- PE1A Discount Schedule.



QO120L125G



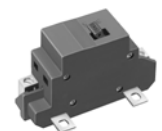
QO816L100F or S without cover

**Main Circuit Breaker Kits**

**Table 1.17: Field-Installed Main Circuit Breaker (Use with Convertible Load Centers Only)**

Main Circuit Breaker Rating▲	Convertible Load Center Mains Rating	QOM1 Frame Size			QOM2 Frame Size †			Lug Wire Size ‡ AWG/kcmil	
		22 k AIR ◆		Lug Wire Size ‡ AWG/kcmil	Main Circuit Breaker Rating▲	Convertible Load Center Mains Rating	22 k AIR ◆		
		Main Circuit Breaker	\$ Price				Main Circuit Breaker		\$ Price
50 A	100-125	QOM50VH	140.00	12-2/0 Al or Cu	100 A	150-225	QOM2100VH	468.00	
60 A	100-125	QOM60VH	140.00		125 A	150-225	QOM2125VH	468.00	
70 A	100-125	QOM70VH	140.00		150 A	150-225	QOM2150VH	468.00	
80 A	100-125	QOM80VH	201.00		175 A	200-225	QOM2175VH	468.00	
90 A	100-125	QOM90VH	201.00		200 A	200-225	QOM2200VH	468.00	
100 A	100-125	QOM100VH	201.00		225 A	225	QOM2225VH	468.00	
110 A	125	QOM110VH	468.00						
125 A	125	QOM125VH	468.00						

- Do not exceed the load center mains rating.
- ◆ 22 k AIR main circuit breaker UL Listed for use ahead of QO, QOT and QO-PL 10 k AIR branch circuit breakers to permit their application on systems with up to 22 kA available fault current.
- ‡ Wire range listed for QOM circuit breaker kits is the wire range of that circuit breaker. To find out maximum wire size permitted in a particular load center per UL, see pages 1-5 through 1-11 under Main Wire Size.
- † Add suffix 1021 for 120, 208 or 240 Vac shunt trip. Add \$126.00.



QOM1 Frame Size 50-125 Amperes



QOM2 Frame Size 100-225 Amperes

1Ø3W—120/240 Vac—UL Listed

Table 1.18: Indoor Main Circuit Breaker (Order QO, QOT, QO-EPD, QO-GFI, QO-AFI and QO-PL Branch Circuit Breakers from pages 1-2 and 1-3.)

Mains Rating	Spaces	Max. Single Pole Circuits▲	Max. Tandem Circuit Breakers	\$ Price (Interior, Box and Cover)	Load Center Box and Interior		Indoor Cover with Door (Order Separately)			Main Wire Size AWG/kcmil Al or Cu	Equipment Ground Bar Kit (Order Separately)		Box No. See Page 1-17
					Cat. No.	\$ Price	Flush Cat. No.	Surface Cat. No.	\$ Price		Cat. No.	\$ Price	
<b>Convertible Mains —Factory-installed Main Circuit Breaker, 22 kA Short Circuit Current Rating, Convertible to Main Lugs (see below) or Lower Amperage Main Circuit Breaker (See page 1-5), ■</b>													
<b>QOM1 Main Circuit Breaker Frame Size—Copper Bus</b>													
100 A	12	12	0	339.70	QO112M100	302.00	QOC12UF	QOC12US	37.70	6-1	PK9GTA	13.40	5
	16	16	0	379.70	QO116M100	342.00	QOC20U100F	QOC20U100S	37.70		PK12GTA	15.80	6
	20	20	0	433.70	QO120M100	396.00	QOC20U100F	QOC20U100S	37.70		PK15GTA	17.10	6
	24	24	0	553.70	QO124M100	516.00	QOC24UF	QOC24US	37.70	6-2/0	PK15GTA	17.10	7
32	32	0	726.70	QO132M100	689.00	QOC32UF	Use Flush	37.70	PK18GTA		18.80	8	
125 A	24	24	0	819.70	QO124M125	782.00	QOC24UF	QOC24US	37.70	6-2/0	PK15GTA	17.10	7
	32	32	0	1041.60	QO132M125	1002.00	QOC32UF	Use Flush	39.60		PK18GTA	18.80	8
<b>Convertible Mains —Factory-Installed Main Circuit Breaker, 22 kA Short Circuit Current Rating, Convertible to Main Lugs (see below) or Lower Amperage Main Circuit Breaker (See page 1-5) ■</b>													
<b>QOM2 Main Circuit Breaker Frame Size—Copper Bus</b>													
150 A	20	30	10	821.00	QO12030M150	734.00	QOC30UF	QOC30US	87.00	4-250	PK18GTA	18.80	9
	24	24	0	849.00	QO124M150	762.00	QOC30UF	QOC30US	87.00		PK15GTA	17.10	9
	30	30	0	854.00	QO130M150	767.00	QOC30UF	QOC30US	87.00		PK18GTA	18.80	9
	32	32	0	969.00	QO132M150	882.00	QOC40UF	QOC40US	87.00		PK18GTA	18.80	10
200 A	20	40	20	821.00	QO12040M200	734.00	QOC30UF	QOC30US	87.00	4-250	PK23GTA	21.30	9
	24	24	0	866.00	QO124M200	779.00	QOC30UF	QOC30US	87.00		PK15GTA	17.10	9
	24	36	12	1287.00	QO12436M200TFT◇	1200.00	QOC40UF	QOC40US	87.00		PK23GTA and LK100AN□		10
	30	30	0	879.00	QO130M200	792.00	QOC30UF	QOC30US	87.00		PK18GTA	18.80	9
	30	40	10	957.00	QO13040M200	870.00	QOC30UF	QOC30US	87.00		PK23GTA	21.30	9
	40	40	0	1121.00	QO140M200	1034.00	QOC40UF	QOC40US	87.00		PK23GTA	21.30	10
	40	60	20	1431.00	QO14060M200	1344.00	QOC40UF	QOC40US	87.00		PK23GTA	21.30	10
	42	42	0	1220.00	QO142M200	1109.00	QOC42UF	QOC42US	111.00		PK23GTA	21.30	11
225 A	42	52	10	1382.00	QO14252M200	1271.00	QOC42UF	QOC42US	111.00	4-300	PK23GTA	21.30	11
	40	40	0	1196.00	QO140M225	1085.00	QOC42UF	QOC42US	111.00		PK23GTA	21.30	11
42	42	0	1253.00	QO142M225	1142.00	QOC42UF	QOC42US	111.00		PK23GTA	21.30	11	
<b>Fixed Mains—Factory-installed LAL Main Circuit Breaker, 42 kA Short Circuit Current Rating◆</b>													
300 A	42	42	0	4909.00	QONQ42MS300 (int)★	4243.00	NC62NQVF	NC62NQVS	591.00	(1) 4-500 or (2) 4-3/0	PK27GTA▼ or PK15GTA6	33.80	16
					MH62 (box)△								
400 A	42	42	0	4909.00	QONQ42MS400 (int)★	4243.00	NC62NQVF	NC62NQVS	591.00	(1) 4-500 or (2) 4-250	PK27GTA▼ or PK15GTA6	53.00	16
					MH62 (box)△								

Above listings through 200 A mains rating meet Federal Specification W-P-115c as Type 1, Class 2.

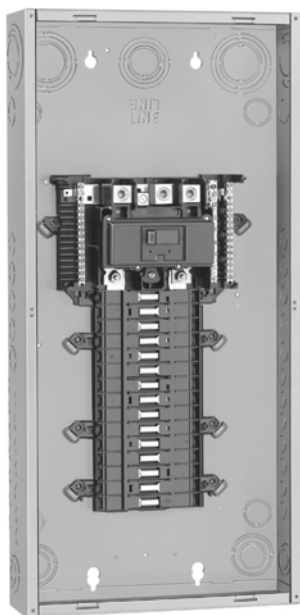
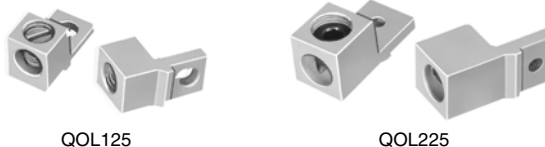
- ▲ Maximum single pole branch circuits utilizing QO and/or QOT circuit breakers.
- 22 k AIR main circuit breaker UL Listed for use ahead of QO, QOT and QO-PL 10 k AIR branch circuit breakers to permit their application on systems with up to 22 kA available fault current.
- ◆ UL short circuit current rating depends on lowest interrupting rating of circuit breakers installed. Also, UL Listed 5000 A short circuit current for corner grounded Delta systems. Use QO-H circuit breakers only.
- ★ Interior only, order box separately.
- ▼ PK27GTA includes a 6-2/0 Al/Cu lug.
- △ PE1A Discount Schedule.
- Factory included.
- ◇ Supplied with feed-thru lugs.

Main Lug Kits

Table 1.19: Field-Installed Main Lugs (Convertible Load Centers Only)

Main Lug Rating★	Use on Convertible Load Center with Mains Rating	Cat. No.	\$ Price	Lug Wire Size▽ AWG/kcmil Al or Cu
125 A	100-125 A	QOL125	44.10	6-2/0
225 A	150-225 A	QOL225	104.00	6-300

- ★ Do not exceed the load center mains rating.
- ▽ Wire range listed for QOL lug kits is the wire range of that lug. To find out maximum wire size permitted in a particular load center per UL, see pages 1-5 through 1-11 under main wire size.
- If main circuit breaker knockout has been removed from the load center's trim, order appropriate filler plate from page 1-13.



QO130M150

**1Ø3W—120/240 Vac—UL Listed**

**Table 1.20: Main Lugs (Order QO, QOT, QO-GFI, QO-EPD, QO-AFI and QO-PL branch circuit breakers from pages 1-2 and 1-3.)**

Mains Rating	Spaces	Max. Single Pole Circuits▲	Max. Tandem Circuit Breakers	\$ Price (Interior, Box and Cover)	Load Center Box and Interior		Main Wire Size AWG/kcmil		Equipment Ground Bar Kit (Order Separately)		Box No. See Page 1-17
					Cat. No.	\$ Price	Al	Cu	Cat. No.	\$ Price	
<b>Non-Metallic Enclosure</b>											
<b>Fixed Mains—Factory-installed Main Lugs—10 kA Short Circuit Current Rating</b>											
60 A	2	4	2	102.00	QO24L60NRNM	102.00	14-4	14-4	Factory-installed	—	1NM
<b>Metallic Enclosure</b>											
<b>Fixed Mains—Factory-installed Main Lugs—10 kA Short Circuit Current Rating</b>											
40 A	2	2	0	113.00	QO2L40RB■	113.00	12-6	14-6	PK3GTA1	11.40	1R
70 A	2	4	2	131.00	QO24L70RB■	131.00	12-3	14-4	PK4GTA	10.80	1R
100 A	6	12	6	143.00	QO612L100RB◆	143.00	8-1	Factory-installed	PK7GTA	11.70	2R
	6	12	6	158.00	QO612L100TRB◆	158.00			—	2R	
100 A	8	16	8	231.00	QO816L100RB◆	231.00	8-1	Factory-installed	PK7GTA	11.70	2R
	6	12	6	174.00	QO612L100RBCU◆★	174.00			PK7GTA	11.70	2R
100 A	8	16	8	279.00	QO816L100RBCU◆★	279.00	8-1	Factory-installed	PK7GTA	11.70	2R
125 A	4	8	4	152.00	QO148L125GRB★	152.00	12-2/0	14-2/0	PK7GTA Factory-included	—	15R
<b>Convertible Mains—Factory-installed Main Lugs—65 kA Short Circuit Current▼△□</b>											
<b>QOM1 Main Frame Size—Convertible to Main Circuit Breaker—Copper Bus</b>											
125 A	12	12	0	285.00	QO112L125GRB	285.00	6-2/0	Factory-installed	PK9GTA Factory-included	—	3R
	12	24	12	365.00	QO11224L125GRB	365.00			PK15GTA Factory-included	—	3R
	16	24	8	435.00	QO11624L125GRB	435.00			PK15GTA Factory-included	—	4R
	24	24	0	522.00	QO124L125GRB	522.00			PK15GTA Factory-included	—	4R
<b>Convertible Mains—Factory-installed Main Lugs—65 kA Short Circuit Current▼△□</b>											
<b>QOM2 Main Frame Size—Convertible to Main Circuit Breaker—Copper Bus</b>											
150 A	30	30	0	587.00	QO130L150GRB	587.00	4-250	Factory-installed	PK23GTA, LK100AN Factory-included	—	6R
	12	12	0	480.00	QO112L200GRB	480.00			PK9GTA Factory-included	—	5R
200 A	30	30	0	666.00	QO130L200GRB	666.00	4-250	Factory-installed	PK23GTA, LK100AN Factory-included	—	6R
	30	40	10	714.00	QO13040L200GRB	714.00			PK23GTA, LK100AN Factory-included	—	6R
	40	40	0	971.00	QO140L200GRB	971.00			PK23GTA, LK100AN Factory-included	—	7R
	40	60	20	1262.00	QO14060L200GRB	1262.00			(2) PK15GTA, (1) LK100AN Factory-included	—	7R
	42	52	10	1194.00	QO14252L200GRB	1194.00			(2) PK15GTA, (1) LK100AN Factory-included	—	8R
	225 A	42	42	0	1310.00	QO142L225GRB			1310.00	4-300	PK23GTA, LK100AN Factory-included

**1Ø3W—120/240 Vac—UL Listed**

**Table 1.21: Main Circuit Breaker Order QO, QOT, QO-GFI, QO-AFI, QO-EPD and QO-PL branch circuit breakers from pages 1-2 and 1-3.**

Mains Rating	Spaces	Max. Single Pole Circuits▲	Max. Tandem Circuit Breakers	\$ Price (Interior, Box and Cover)	Load Center Box and Interior		Main Wire Size AWG/kcmil Al or Cu	Equipment Ground Bar Kit (Order Separately)		Box No. See Page 1-17	
					Cat. No.	\$ Price		Cat. No.	\$ Price		
<b>Convertible Mains —Factory-installed Main Circuit Breaker, 22 kA Short Circuit Current Rating</b>											
<b>—Convertible to Main Lugs (see page 1-6) or Lower Amperage Main Circuit Breaker (see page 1-5)◇□</b>											
<b>QOM1 Main Circuit Breaker Frame Size—Copper Bus</b>											
100 A	12	12	0	461.00	QO112M100RB	461.00	6-2/0	Factory-installed	PK9GTA	13.40	3R
	16	16	0	504.00	QO116M100RB	504.00			PK12GTA	15.80	4R
	20	20	0	552.00	QO120M100RB	552.00			PK15GTA	17.10	4R
125 A	24	24	0	954.00	QO124M125RB	954.00	6-2/0	Factory-installed	PK15GTA	17.10	4R
<b>Convertible Mains —Factory-installed Main Circuit Breaker, 22 kA Short Circuit Current Rating</b>											
<b>—Convertible to Main Lugs (see page 1-6) or Lower Amperage Main Circuit Breaker (see page 1-5)◇□</b>											
<b>QOM2 Main Circuit Breaker Frame Size—Copper Bus</b>											
150 A	20	30	10	953.00	QO12030M150RB	953.00	4-250	Factory-installed	PK18GTA	18.80	5R
	30	30	0	1122.00	QO130M150RB	1122.00			PK18GTA	18.80	6R
200 A	20	40	20	954.00	QO12040M200RB	954.00	4-250	Factory-installed	PK23GTA	21.30	5R
	30	30	0	1154.00	QO130M200RB	1154.00			PK18GTA	18.80	6R
	30	40	10	1179.00	QO13040M200GRB	1179.00			PK23GTA	21.30	6R
	40	40	0	1397.00	QO140M200RB	1397.00			PK23GTA	21.30	7R
	40	60	20	1815.00	QO14060M200RB	1815.00			PK15GTA	17.10	7R
	42	42	0	1469.00	QO142M200RB	1469.00			PK23GTA	21.30	8R
225 A	42	42	0	1718.00	QO14252M200RB	1718.00	4-300	Factory-installed	PK15GTA	17.10	8R
225 A	42	42	0	1631.00	QO142M225RB	1631.00	4-300	Factory-installed	PK23GTA	21.30	8R
<b>QOM1/QOM2 Feed-Thru Main Circuit Breaker With Feed-Thru Lugs—Copper Bus, 22 kA Short Circuit Current Rating ◇</b>											
125 A	6	12	6	620.00	QO1612M125FTRB★	620.00	4-2/0	Factory-installed	PK12GTA	15.80	3R
150 A	8	16	8	863.00	QO1816M150FTRB★	863.00	4-250	Factory-installed	PK15GTA-L	35.00	6R
200 A	8	16	8	863.00	QO1816M200FTRB★	863.00	4-250	Factory-installed	PK15GTA-L	35.00	6R

Above listings through 200 A mains rating meet Federal Specification W-P-115c as Type 1, Class 2.

- ▲ Maximum single pole branch circuits utilizing QO and/or QOT circuit breakers.
- Use 10 AWG maximum size wire for AFI and GFI circuit breaker.
- ◆ 70 A max. branch circuit breaker and 70 A max. back fed main circuit breaker.
- ★ Copper bus.
- ▼ UL short circuit current rating depends on lowest interrupting rating of circuit breakers installed.
- △ UL Listed 5000 A short circuit current rating for corner grounded Delta systems. Use QO-H circuit breakers only.
- ◇ Side hinge door device; allow 1-1/4 in. on left side for door to open.
- 22 k AIR main circuit breaker UL Listed for use ahead of QO, QOT, QO-GFI, QO-AFI, QO-EPD and QOPL 10 k AIR branch circuit breakers to permit their application on systems up to 22 kA available fault current.
- ☆ QO1612M125FTRB provided with QOM1 frame main circuit breaker. QO1816M150FTRB and QO1816M200FTRB provided with QOM2 frame main circuit breaker.

Table 1.22: 3Ø4W 208Y/120 Vac, 3Ø4W 240/120 Vac Delta and 3Ø3W 240 Vac Delta, UL Listed.

(Order QO, QO-GFI, QO-AFI, QO-PL branch circuit breakers from pages 1-2 and 1-3.)

Mains Rating	Max. Number of 1P QO circuit breakers	\$ Price (Interior, Box and Cover)	Load Center Box and Interior		Indoor Cover with Door (Order Separately)			Main Wire Size AWG/kcmil		Equipment Ground Bar Kit (Order Separately)		Box No. See Pages 1-17
			Cat. No.	\$ Price	Flush Cat. No.	Surface Cat. No.	\$ Price	Al	Cu	Cat. No.	\$ Price▽	
<b>Fixed Mains—Factory-installed Main Lugs—Copper Bus—65 kA Short Circuit Current Rating ▲</b>												
60 A	3	107.00	QO403L60NF/S	107.00	Cover Included With Load Center (No Door)			—	10-6	PK4GTA	7.20	13
125 A	12	369.70	QO312L125G◇	332.00	QOC16UF	QOC16US	37.70☆	6-2/0	6-2/0	Factory-incl.□	—	6
	20	508.70	QO320L125G◇	471.00	QOC24UF	QOC24US	37.70☆			Factory-incl.□	—	7
	24	577.70	QO324L125G◇	540.00	QOC24UF	QOC24US	37.70☆			Factory-incl.□	—	7
200 A	18	530.00	QO318L200G◇	443.00	QOC30UF	QOC30US	87.00☆	6-250	6-250	Factory-incl.△	—	9
	30	707.00	QO330L200G◇	620.00	QOC30UF	QOC30US	87.00☆			Factory-incl.△	—	9
225 A	42	953.00	QO342L225G◇	842.00	QOC42UF	QOC42US	111.00☆	6-300	6-300	Factory-incl.△	—	11
<b>Convertible Mains—Factory-installed QDL Main Circuit Breaker—Copper Bus—25 kA Short Circuit Current Rating ■</b>												
100 A	27	1058.00	QO327M100◆	971.00	QOC30UF	QOC30US	87.00☆	4-2/0	4-2/0	PK15GTA	17.10	9
125 A	30	1931.00	QO330MQ125★◇	1839.00	QOC342MQF	QOC342MQS	92.00	4-300	4-300	PK18GTA	18.80	12
	30	1931.00	QO330MQ150★◇	1839.00	QOC342MQF	QOC342MQS	92.00			PK18GTA	18.80	12
150 A	42	2119.00	QO342MQ150★◇	2027.00	QOC342MQF	QOC342MQS	92.00	4-300	4-300	PK23GTA	21.30	12
	30	1931.00	QO330MQ200★◇	1839.00	QOC342MQF	QOC342MQS	92.00			PK18GTA	18.80	12
200 A	42	2119.00	QO342MQ200★◇	2027.00	QOC342MQF	QOC342MQS	92.00	4-300	4-300	PK23GTA	21.30	12
	42	2119.00	QO342MQ225★◇	2027.00	QOC342MQF	QOC342MQS	92.00			PK23GTA	21.30	12

<b>Fixed Mains—Factory-installed Main Lugs—Copper Bus—65 kA Short Circuit Current Rating ▲▼</b>												
60 A	3	177.00	QO403L60NRB	177.00	Cover Included			—	10-6	PK4GTA	10.80	10R
125 A	12	485.00	QO312L125GRB	485.00				6-2/0	6-2/0	Factory Incl.□	—	3R
	20	629.00	QO320L125GRB	629.00				Factory Incl.□	—	4R		
200 A	18	618.00	QO318L200GRB	618.00				6-250	6-250	Factory Incl.△	—	6R
	30	839.00	QO330L200GRB	839.00				Factory Incl.△	—	6R		
225 A	42	1494.00	QO342L225GRB	1494.00	6-300	6-300	Factory Incl.△	—	8R			
<b>Convertible Mains—Factory-installed QDL Main Circuit Breaker—Copper Bus—25 kA Short Circuit Current Rating ■▼</b>												
100 A	27	1185.00	QO327M100RB◆	1185.00	Cover Included			4-2/0	4-2/0	PK15GTA	17.10	6R
125 A	30	2147.00	QO330MQ125RB★	2147.00				4-300	4-300	PK18GTA	18.80	14R
	30	2147.00	QO330MQ150RB★	2147.00				4-300	4-300	PK18GTA	18.80	14R
200 A	30	2147.00	QO330MQ200RB★	2147.00				4-300	4-300	PK18GTA	18.80	14R
	42	2333.00	QO342MQ200RB★	2333.00				4-300	4-300	PK23GTA	21.30	14R
225 A	42	2333.00	QO342MQ225RB★	2333.00				4-300	4-300	PK23GTA	21.30	14R

Above listings through 200 A mains rating meet Federal Specification W-P-115C as Type 1, Class 2.

- ▲ UL short circuit current rating depends on lowest interrupting rating of circuit breaker installed.
- 25 kA short circuit current rating maximum with Square D Type QDL main circuit breaker, or 22 kA SCCR maximum with back-fed Type QO-VH main circuit breaker, feeding QO 10 k AIR branch circuit breakers.
- ◆ Includes factory-installed back fed QO3100VH main circuit breaker.
- ★ 65 kA Short Circuit Current Rating maximum with field-installed Square D type QGL 65 k AIR minimum main circuit breaker feeding QO and Q1 10 k AIR minimum branch circuit breakers.
- ▼ Side hinge door device allow 1-1/4 in. on left side for door to open.
- △ PK23GTA and LK100AN.
- PK15GTA.
- ◇ For Certification to IEC 60439-1 contact the local Square D sales office; otherwise panels are NOT CE marked. (For use on 415Y/240 Vac 3-phase 4-wire, 3,000 Short Circuit Current Rating when QODX...branch circuit breakers are used and 10,000 Short Circuit Current Rating when QO...VS branch circuit breakers are used).
- ☆ DE3A Discount Schedule
- ▽ DE2 Discount Schedule

Table 1.23: 3Ø Main Circuit Breakers

Field-installed alternate main circuit breakers for QO 3Ø main circuit breaker load centers rated 70-225 A. Do not exceed the load center main rating.

Amperage	25 k AIR	65 k AIR	100 k AIR○
70 A	QDL32070	QGL32070	QJL32070
80 A	QDL32080	QGL32080	QJL32080
90 A	QDL32090	QGL32090	QJL32090
100 A	QDL32100	QGL32100	QJL32100
110 A	QDL32110	QGL32110	QJL32110
125 A	QDL32125	QGL32125	QJL32125
150 A	QDL32150	QGL32150	QJL32150
175 A	QDL32175	QGL32175	QJL32175
200 A	QDL32200	QGL32200	QJL32200
225 A	QDL32225	QGL32225	QJL32225
<b>\$ Price (DE2)</b>	<b>1784.00</b>	<b>2442.00</b>	<b>2796.00</b>

○ When these 3P circuit breakers are used as the main circuit breaker of a 3Ø load center, the maximum AIR rating is 65 kA at 240 Vac and 100 kA at 208 Vac.

Table 1.24: 3Ø Main Lug Kits

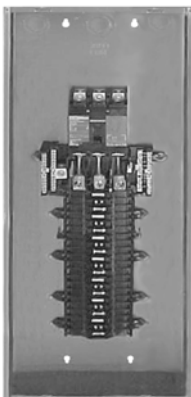
Field-installed main lugs for convertible 3Ø main circuit breaker load centers.

Main Lug Amperage Rating	Cat. No.	\$ Price	Lug Wire Size AWG/kcmil
125 A	QOL3125	67.00	6-2/0 Cu/Al
225 A	QOL3225	158.00	6-300 Cu/Al

LOAD CENTERS

INDOOR

RAIN PROOF



QO342MQ200



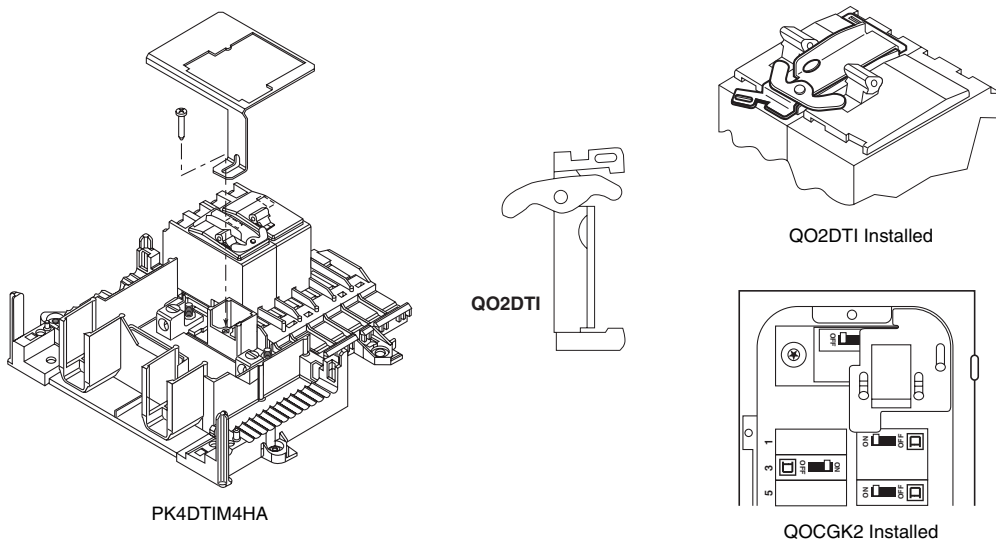
QO312L125G



**Table 1.25: Order QO, QOT, QO-EPD, QO-GFI, and QO-AFI Branch Circuit Breakers from pages 1-2 and 1-3.**

Mains Rating (A)	Spaces	Max. Single Pole Circuits ▲	Max. Tandem Circuit Breakers	Load Center Box, Interior and Cover		Equipment Grounding Bar Kit (Order Separately)		Main Wire Size AWG/kcmil		Box No. See Page 1-12		
				Cat. No.	\$ Price	Cat. No.	\$ Price	Al	Cu			
<b>Generator Panels for Sub-Feed Applications Type 1 (Indoor)</b>												
1-Phase 3-Wire 120/240 Vac Factory-Installed Main Circuit Breakers with Mechanical Interlock 10,000 RMS Sym. Amperes Short Circuit Current Rating												
30	4	8	4	QO48M30DSGP	563.00	PK7GTA	11.70	14-8	14-8	4		
60	4	8	4	QO48M60DSGP	563.00			8-2	8-2	4		
<b>Generator Panels with Power Inlet Plug for Sub-Feed Applications Type 3R (Outdoor)</b>												
1-Phase 3-Wire 120/240 Vac Factory-Installed Main Circuit Breakers with Mechanical Interlock 10,000 RMS Sym. Amperes Short Circuit Current Rating												
100	4	8	4	QO1DM10020TRBR	848.00	Factory-Installed		—	8-2	—		
	4	8	4	QO1DM10030TRBR	848.00			—		—		
	4	8	4	QO1DM10050TRBR	1148.00			—		—		
<b>Generator Panel—Automatic Transfer Switch (Contact your local Square D Field Sales office for more information.) ■</b>												
1-Phase 3-Wire 120/240 Vac Factory- or Field-Installed Main Circuit Breaker 22,000 RMS Sym. Ampere Short Circuit Current Rating												
150	38	42	42	QO13842MX150	1349.00	PK23GTA	21.30	4-250	4-250	12		
	200	38	42	42	QO13842MX200	1499.00	PK23GTA	21.30	4-250	4-250	12	
	225	38	42	42	QO13842MX225	1649.00	PK23GTA	21.30	4-250	4-250	12	
		38	42	42	QO13842UX225 ♦	1199.00			4-250	4-250	12	
					QOC38MXUF (Cover)	149.00	—					
	150	14	28	28	QO11428MX150FTRB★▼	1349.00	PK23GTA	21.30	4-250	4-250	7R	
		14	28	28	QO11428MX200FTRB★▼	1499.00	PK23GTA	21.30	4-250	4-250	7R	
		14	28	28	QO11428UX200FTRB♦★▼	1199.00	PK23GTA	21.30	4-250	4-250	7R	
	<b>QO Load Center Accessories</b>											
	<b>Manual Transfer Equipment Kit</b>								For interlocking the handles of two 2P or one 2P and one 1P QO and Q1 circuit breakers mounted side-by-side so that only one circuit breaker can be "ON" at a time.		QO2DTI	24.90
QO2DTI mechanical interlock attachment with retaining kits for securing two adjacent back-fed circuit breakers in dual power supply applications. Can be used with (2) 2P or (1) 2P and (1) 1P QO circuit breakers in QO816L100 load centers.									QO2DTIM	63.00	DE2E	
Secures two 2P circuit breakers to right side of interior when used as back-fed mains, a QO2DTI Kit included for back-up power supply applications. For 1Ø 100-125 ampere convertible main load centers. Series S01 and S02.									PK4DTIM4LA	102.00	DE3A	
Secures two 2P circuit breakers to right side of interior when used as back-fed mains, a QO2DTI Kit included for back-up power supply applications. For 1Ø 150-225 ampere convertible main load centers. Series S01 and S02.									PK4DTIM4HA	102.00	DE3A	
Secures two 2P circuit breakers to left side of interior when used as back-fed mains, a QO2DTI Kit included for back-up power supply applications. For 1Ø 100-125 ampere convertible main load centers. Series S01 and S02.									PK4DTIM4LAL	102.00	DE3A	
<b>Generator Circuit Breaker Interlock Kit</b>								For use on "G" and "S" Series NEMA 1 and "G", "S1" and "S2" Series NEMA 3R load centers. Interlocks a QOM1 2P main circuit breaker of a load center (100-125 A) with a QO 2P (15-125 A) branch circuit breaker. Includes a retaining kit.		QOCRBGK1	105.00	DE3A
								For use on "G" and "S" Series NEMA 1 and "G" and "S1" Series NEMA 3R load centers. Interlocks a QOM2 2P main circuit breaker of a load center (150-225 A) with a QO 2P (15-125 A) branch circuit breaker. Includes a retaining kit.		QOCGK2	105.00	DE3A
								For use on "S2" Series NEMA 3R load centers. Interlocks a QOM2 2P main circuit breaker of a load center (150-225 A) with a QO 2P (15-125 A) branch circuit breaker. Includes a retaining kit.		QORBGK2	105.00	DE3A

- ▲ Maximum single pole branch circuits utilizing QO and/or QOT circuit breakers.
- One main circuit breaker is included with panel. NEMA 1 indoor device requires cover ordered separately. Alternate source main circuit breaker (QO 125 A max.) ordered separately. Automatic Transfer Switch and Generator for secondary power source are ordered through a Kohler authorized dealer or contractor.
- ♦ Universal mains - No factory-installed main circuit breaker or main lugs. QOM2 frame size, field-install 22 k AIR. Main circuit breaker or main lugs (see pages 1-5 or 1-6).
- ★ Supplied with feed-thru lugs.
- ▼ Device is rated NEMA 3R and can be used for indoor or outdoor applications.



LOAD CENTERS

**Table 1.26: QO Special Application (Order QO, QOT, QO-EPD, QO-GFI and QO-AFI Branch Circuit Breakers from pages 1-2 and 1-3.)**

Mains Rating	Short Circuit Current Rating	Spaces	Max. 1P Circuits ▲	Max. Tandem Circuit Breakers	Load Center ■ Box, Interior, and Cover		Equipment Ground Bar Kit (Order Separately)		Main Wire Size AWG/kcmil		Box No. See Page 1-17	
					Cat. No.	\$ Price	Cat. No.	\$ Price	Al	Cu		
<b>Manufactured Housing:</b>												
<b>1Ø2W 120 Vac—Main Lugs Only—CSA Certified</b>												
30 A◆	10 kA	2	2	0	QO2L30TTS★	51.00	Factory-installed	12-10	14-10	1		
50 A	10 kA	2	4	2	QO24L50TTS▼	78.00						14-6
<b>1Ø2W 120 Vac—Main Circuit Breaker—CSA Certified</b>												
30 A	10 kA	3	5	2	QO35FM30TTF/S	83.00	Factory-installed	△			3	
<b>1Ø3W 120/240 Vac—Main Lugs Only—CSA Certified</b>												
70 A	10 kA	2	4	2	QO24L70TS▼	78.00	Factory Installed	12-3	14-4		2	
100 A	10 kA	6	12	6	QO612L100TF/S□	86.00		4-1				4
	10 kA	6	12	6	QO612L100DTF/S□	101.00						4
	10 kA	8	16	8	QO816L100TF/S□	137.00						4
	10 kA	8	16	8	QO816L100DTF/S□	159.00						4
<b>Load Center with Cover: 1Ø3W 120/240 Vac—UL Listed Complete QO Load Center—Box, Interior and Combination Cover in One Package</b>												
<b>Convertible Mains—Factory-Installed Main Lugs ☆—QOM1 Main Frame Size—Convertible to Main Circuit Breaker (See page 1-5)—Copper Bus</b>												
125 A	65 kA	12	12	0	QO112L125GC	188.00	PK12GTA Incl.		6-2/0		6	
	65 kA	12	24	12	QO11224L125GC	249.00	PK15GTA Incl.		6-2/0		6	
	65 kA	20	20	0	QO120L125GC	284.00	PK15GTA Incl.		6-2/0		7	
<b>Convertible Mains—Factory-Installed Main Lugs ☆—QOM2 Main Frame Size—Convertible to Main Circuit Breaker (See page 1-5)—Copper Bus</b>												
150 A	65 kA	30	30	0	QO130L150TC	452.00	PK23GTA, LK100AN Installed		6-250		9	
200 A	65 kA	30	40	10	QO13040L200GC	575.00	PK23GTA, LK100AN Incl.		6-250		9	
<b>Convertible Mains—Factory-Installed Main Circuit Breaker—QOM1 Main Frame Size—Convertible to Main Lugs (See page 1-6) or Lower Amperage Main Circuit Breaker (See page 1-5)—Copper Bus ▼</b>												
100 A	22 kA	12	12	0	QO112M100C	351.00	PK9GTA	13.40	4-1/0		5	
	22 kA	12	20	8	QO11220M100C	413.00	PK15GTA	17.10	4-1/0		5	
	22 kA	16	16	0	QO116M100C	395.00	PK12GTA	15.80	4-1/0		6	
	22 kA	20	20	0	QO120M100C	446.00	PK15GTA	17.10	4-1/0		6	
125 A	22 kA	32	32	0	QO132M125C	1041.00	PK18GTA	18.80	6-2/0		8	
<b>Convertible Mains—Factory-Installed Main Circuit Breaker—QOM2 Main Frame Size—Convertible to Main Lugs (See page 1-6) or Lower Amperage Main Circuit Breaker (See page 1-5)—Copper Bus ▼</b>												
150 A	22 kA	20	30	10	QO12030M150C	843.00	PK18GTA	18.80	4-250		9	
	22 kA	30	30	0	QO130M150C	870.00	PK18GTA	18.80	4-250		9	
200 A	22 kA	20	40	20	QO12040M200C	843.00	PK23GTA	21.30	4-250		9	
	22 kA	30	30	0	QO130M200C	896.00	PK18GTA	18.80	4-250		9	
	22 kA	30	40	10	QO13040M200C	974.00	PK23GTA	21.30	4-250		9	
	22 kA	40	40	0	QO140M200C	1137.00	PK23GTA	21.30	4-250		10	

Above listings through 200 A mains rating meet Federal Specification W-P-115c as Type 1, Class 2.

- ▲ Maximum single pole branch circuits utilizing QO and/or QOT circuit breakers.
- Order F for flush device or S for surface device.
- ◆ Mains rating 25 A when Al wire is used.
- ★ Will not accept Qwik-Gard® QO-GFI or QO-AFI circuit breaker.
- ▼ Use 10 AWG maximum size wire for GFI and AFI circuit breakers.
- △ Main circuit breaker is a field-installed standard QO single pole circuit breaker. Order separately from page 1-2.
- 70 A max. branch circuit breaker and 70 A max. back fed main circuit breaker.
- ◇ UL short circuit current rating depends on lowest interrupting rating of circuit breaker installed.
- ☆ UL Listed 5000 A short circuit current rating for corner grounded Delta systems. Use QO-H circuit breakers only.
- ▽ 22 k AIR main circuit breaker UL Listed for use ahead of QO, QOT and QO-PL 10 k AIR branch circuit breakers to permit their application on systems with up to 22,000 A available fault current.

**Table 1.27: Auxiliary Gutter**

UL Listed for use with standard 1Ø and 3Ø load centers for riser applications. For auxiliary gutter-load center compatibility, see catalog number 1100CT0501

Cat. No.	\$ Price	Cover	Conduit Riser Size	Width	Height	Depth
SDAG26	338.00	Flush	1-3/4, 2, 2-1/2 or *3	13.50	26.12	3.75

- One tap kit required for each riser wire.
- \* When used with B300 bolt-on hubs.

**Table 1.28: Tap Kits 120/240 Vac—UL Listed for use with Auxiliary Gutter SDAG26**

Cat. No.	\$ Price	Use with Auxiliary Gutter Cat. No.	Riser Wire		Tap Off Wire	
			Lug Type	Al/Cu Wire Size	Lug Type	Al/Cu Wire Size
SDGT30020	81.00	SDAG26	Mechanical (Included)	(2) 6 AWG-300 kcmil	Mechanical (Included)	(1) 6-2/0 AWG
SDGT300300	120.00	SDAG26	Mechanical (Included)	(2) 6 AWG-300 kcmil	Mechanical (Included)	(1) 6 AWG-300 kcmil
SDGT300C10C	49.70	SDAG26	Anderson VCEL030516H1 (Not included)	(2) 4 AWG-300 kcmil	Anderson VCEL02114S1 (Not included)	(1) 8-1/0 AWG
SDGT300C300C	70.00	SDAG26	Anderson VCEL030516H1 (Not included)	(2) 4 AWG-300 kcmil	Anderson VCEL030516H1 (Not included)	(1) 4 AWG-300 kcmil
QOGL20 Grounding Terminals	40.70	SDAG26	Mechanical (Included)	(2) 6-2/0 AWG	—	—

**Load Center Value Pack**

**Table 1.29: 1Ø3W—120/240 Vac—UL Listed—Convertible Mains—Factory-installed Main Circuit Breaker Complete Load Center (Box, Interior and Cover) and Selected Branch Circuit Breakers**

Mains Rating	Spaces	Max. 1P Circuits▲	Max. Tandem Circuit Breakers	Load Center Box, Interior, Cover and Branch Circuit Breakers			Equipment Ground Bar Kit (Order Separately)		Main Wire Size AWG/kcmil Al/Cu	Box No. See Pages 1-17
				Cat. No.	Included Load Center/Circuit Breakers	\$ Price	Cat. No.	\$ Price		
<b>QO—Copper Bus—Order extra QO, QOT, QO-EPD, QO-GFI, QO-AFI branch circuit breakers from pages 1-2 and 1-3.</b>										
<b>Main Circuit Breaker</b>										
100 A	32	32	0	QOVP2	(1) QO132M100C, (5) QO120	839.00	PK18GTA	18.80	4-2/0	8
200 A	30	40	10	QOVP1	(1) QO13040M200C, (5) QO120	1103.00	PK23GTA	21.30	4-250	9
200 A	30	40	10	QOVP10	(1) QO13040M200C, (10) QO120	1328.00	PK23GTA	21.30	4-250	9
<b>Homeline—Order extra HOM, HOMT, HOM-GFI, HOM-AFI branch circuit breakers from page 1-14.</b>										
<b>Main Lugs</b>										
125 A	12	24	12	HOMVPL2	(1) HOM1224L125TC, (5) HOM120	353.00	Included	—	6-2/0	6
200 A	30	40	10	HOMVPL1	(1) HOM3040L200TC, (6) HOM115, (6) HOM120, (1) HOM230, (1) HOM250	962.00	Included	—	4-250	10
<b>Main Circuit Breaker</b>										
100 A	20	20	0	HOMVP4	(1) HOM20M100C, (5) HOM115	528.00	PK15GTA	17.10	4-2/0	7
100 A	20	20	0	HOMVP5	(1) HOM20M100C, (5) HOM120	528.00	PK15GTA	17.10	4-2/0	7
150 A	30	30	0	HOMVP12	(1) HOM30M150C, (5) HOM120, (1) HOM230	983.00	PK23GTA	21.30	4-250	10
200 A	20	40	20	HOMVP16	(1) HOM2040M200TC, (5) HOM120, (1) HOM230	965.00	Included	—	4-250	9
200 A	30	40	10	HOMVP1	(1) HOM3040M200TC, (5) HOM120, (1) HOM230	1083.00	Included	—	4-250	10
200 A	30	40	10	HOMVP2	(1) HOM3040M200TC, (5) HOM115, (1) HOM230	1083.00	Included	—	4-250	10
200 A	30	40	10	HOMVP9	(1) HOM3040M200TC, (6) HOM115, (6) HOM120, (1) HOM230, (1) HOM250	1328.00	Included	—	4-250	10
200 A	30	40	10	HOMVP14	(1) HOM3040M200TC, (12) HOM120, (1) HOM230, (1) HOM250	1328.00	Included	—	4-250	10
200 A	40	40	0	HOMVP15	(1) HOM40M200C, (10) HOM120	1346.00	PK23GTA	21.30	4-250	12
<b>Homeline—Order extra HOM, HOMT, HOM-GFI, HOM-AFI branch circuit breakers from page 1-14.</b>										
<b>Main Circuit Breaker</b>										
200 A	20	40	20	HOMVPRB1	(1) HOM2040M200RB, (6) HOM115, (6) HOM120, (1) HOM230, (1) HOM250	1253.00	PK23GTA	21.30	4-250	6R

Above listings through 200 A mains rating meet Federal Specification W-P-115c as Type 1, Class 2.  
▲ Maximum single pole branch circuits utilizing QO and/or QOT circuit breakers.

**Riser Panels**

**Table 1.30: 1Ø3W 120/240 Vac—Offset Interior Wide Gutter—30 A Maximum Branch Circuit Breaker on left side of interior ♦♦**

Mains Rating	Spaces	Max. Single Pole Circuits★	Max. Tandem Circuit Breakers	Load Center Box and Interior		Load Center Cover		Equipment Ground Bar Kit (Order Separately)		Main Wire Size AWG/kcmil		Box No. See Page 1-17
				Cat. No.	\$ Price	Cat. No.	\$ Price	Cat. No.	\$ Price	Al	Cu	
<b>Convertible Mains—Factory-installed Main Lugs—65 kA Short Circuit Current Rating</b>												
<b>QOM1 Main Frame Size—Convertible to Main Circuit Breaker (See page 1-5) when used with QOC cover below—Copper Bus</b>												
125 A	12	24	12	QO11224L125WG	338.00	QOC20UFWG	53.00	PK15GTA	17.10	6-2/0	14	
125 A	20	30	10	QO12030L125WG	465.00	QOC20UFWG	53.00	PK15GTA	17.10	6-2/0	14	
<b>Convertible Mains—Factory-installed Main Lugs—65 kA Short Circuit Current Rating</b>												
<b>QOM2 Main Frame Size—Convertible to Main Circuit Breaker (See page 1-5) when used with QOC cover below—Copper Bus</b>												
200 A	30	40	10	QO13040L200WG	701.00	QOC30UFWG	102.00	PK23GTA	21.30	4-250	23	
<b>Convertible Mains—Factory-installed Main Circuit Breaker—22 kA Short Circuit Current Rating</b>												
<b>QOM2 Main Frame Size—Convertible to Main Lugs (See page 1-6)—Copper Bus</b>												
200 A	24	24	0	QO124M200WG125▼	683.00	QOC30UFWG	102.00	PK23GTA	21.30	4-250	23	

Above listings through 200 A mains rating meet Federal Specification W-P-115c as Type 1, Class 2.  
■ UL short circuit current rating depends on lowest interrupting rating of circuit breaker installed.  
♦ UL Listed 5000 A short circuit current rating for corner grounded Delta systems. Use QO-H circuit breakers only.  
★ Maximum single pole branch circuits utilizing QO and/or QOT circuit breakers.  
▼ Comes with 125 A main circuit breaker factory installed.

**Panelboard-style Covers for Riser Panels**

Mono-Flat® Front available for riser panels as an alternative to standard load center cover listed above. Provides a low-profile, aesthetically pleasing solution for high-traffic areas in upscale multi-family applications. Deadfront included. Lock kit not provided. Cover NQC30FWG CANNOT be used when panel has been converted to a main circuit breaker panel. △

Mains Rating of Load Center	Cat. No.	\$ Price
125 A	NQC20FWG	117.00
200 A	NQC30FWG	180.00

△ Order catalog number PK4FL for field-installed lock kit.

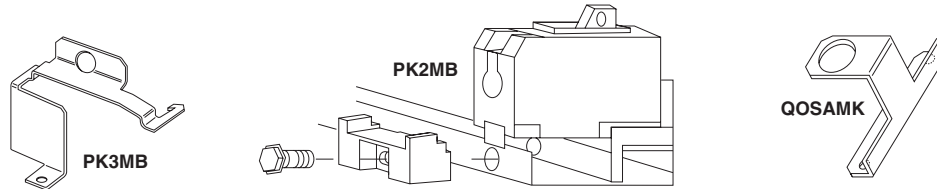
LOAD CENTERS

1

LOAD CENTERS

Table 1.31: QO Load Center Accessories

	Description	Cat. No.	\$ Price	Schedule
Retaining Kit	Secures circuit breaker to interior when used as a back-fed main. For QO612L100F/S, RB, QO612L100DF/S, QO816L100F/S, RB, QO816L100DF/S and QO148L125GF/S, GRB load centers	PK2MB	7.20	DE3A
	Secures 3P circuit breaker without accessories to left side of interior when used as a back-fed main. For 3Ø load centers	PK3MB	14.70	DE3A
	Secures circuit breaker to interior when used as a back-fed main for 2P QO 150–200 A circuit breakers.	PK5RK	14.70	DE3A
	Secures ONE circuit breaker with or without electrical accessories to right side of interior when used as a back-fed main. For 1Ø 100–125 ampere convertible main load centers. Series S01 and S02.	PK4MB2LA	14.70	DE3A
	Secures ONE circuit breaker with or without electrical accessories to right side of interior when used as a back-fed main. For 1Ø 150–225 ampere convertible main load centers. Series S01 and S02.	PK4MB2HA	14.70	DE3A
Miscellaneous	Cover Sealing Strap: Provides means of sealing trim mounting screws on QO load center covers For use on 1Ø3W, 150 Vac maximum	QO1SE	3.60	DE3A
	Surge Arresters: For use on 3Ø4W, 650 Vac maximum QO Surgebreaker $c_{UL_{US}}$ Listed Secondary Surge Arrester 150 Vac line-to-ground maximum. Homeline Surgebreaker $c_{UL_{US}}$ Listed Secondary Surge Arrester 150 Vac line-to-ground maximum.	SDSA1175	92.00	DE1B
		SDSA3650	248.00	DE1B
		QO2175SB	159.00	DE1B
	Surge Arrester Mounting Kit: UL Listed for mounting SDSA1175 surge arrester into ground bar mounting holes on 1Ø convertible main circuit breaker load centers	HOM2175SB	159.00	DE1B
	Surge Arrester Mounting Kit: UL Listed for mounting SDSA1175 surge arrester into ground bar mounting holes on 1Ø convertible main circuit breaker load centers	QOSAMK	11.40	DE3A
Replacement Cover Directory Label: 1 through 42 numbered universal replacement directory label for load center covers	LSDL	0.54	DE5	
Circuit Identification Stickers: Circuit identification stickers for use on cover directory labels to identify branch circuits	PSDS	0.75	DE5	

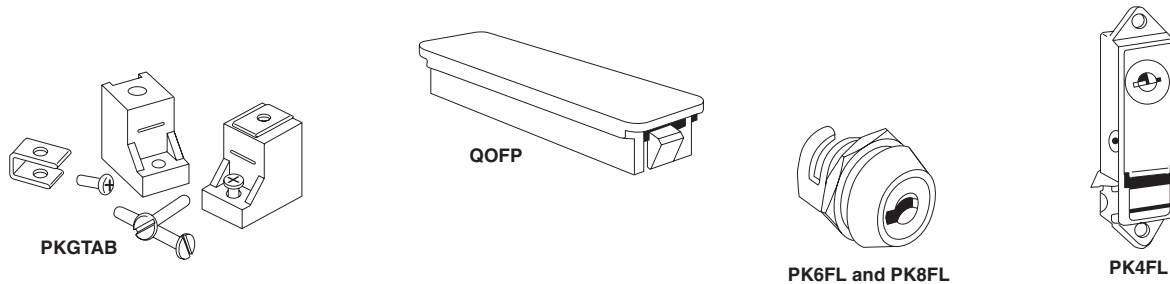




**Table 1.32: QO Load Center Accessories**

Description		Cat. No.	\$ Price	Schedule
Filler Plates	Fills opening in covers if twistout is removed in error	QOFP	3.60	DE3A
	Fills main circuit breaker opening in convertible load center covers 100–125 A	QOM1FP	20.30	DE3A
	Fills main circuit breaker opening in convertible load center covers 150–225 A	QOM2FP	20.30	DE3A
	Fills main circuit breaker opening in 3Ø load center covers (S01 and S02 Series)	KFP	20.30	DE3A
	Fills main circuit breaker opening in "Q" style 3Ø load center covers (S03 Series)	Q2FP	20.30	DE3A
Lock Kits	Use with QO612L100DF/S, QO612L100DFCU/SCU, QO612L100DTF/S, QO612L100DTF/S, QO816L100DF/S, QO816L100DFCU/SCU, QO816L100DTF/S, QO48M30DSGP, or QO48M60DSGP.	PK8FL▲	98.00	DE3A
	Use with convertible mains, 1Ø and 3Ø 100–225 A, and fixed mains, 3Ø 125–225 A indoor load centers	PK6FL	93.00	DE3A
	Use with 300 and 400 ampere indoor load centers.	PK4FL	90.00	PE1A
Neutral / Ground Lugs	Field-installed for 12–2 Al or 14–4 Cu AWG wire	LK70AN	10.10	DE3A
	Field-installed for 6–2/0 Al/Cu AWG wire	LK100AN	10.80	DE3A
	Field-installed for 14–2/0 Al/Cu AWG wire	LK125AN	22.10	DE3A
	Field-installed for 2–3/0 Al/Cu AWG wire	LK150AN	32.40	DE3A
	Field-installed for 4 AWG to 300 kcmil Al/Cu wire. Use in Series S, 150–225 A QO or HOM load center	LK225AN	33.20	DE3A
Ground Bar Kits	Standard PK15GTA with a 1–4/0 Al/Cu Lug	PK15GTAL	35.00	DE3A
	Standard PK18GTA with a 1–4/0 Al/Cu Lug	PK18GTAL	37.80	DE3A
	Standard PK23GTA with a 1–4/0 Al/Cu Lug	PK23GTAL	40.70	DE3A
	Insulator Kit for PK7GTA through PK27GTA	PKGTAB	43.80	DE3A
Handle Padlock Attachment:	For padlocking main circuit breakers in convertible load centers OFF.....50–125 A, QOM1 Frame Size	QOM1PA	11.00	DE2E
	For padlocking main circuit breakers in convertible load centers OFF.....100–225 A, QOM2 Frame Size	QOM2PA	11.00	DE2E

▲ QO403L60NF/S does not have provisions for a field-installed lock.



**Table 1.33: Homeline Load Center Accessories**

Description		Cat. No.	\$ Price	Schedule
Handle Padlock Attachment:	For padlocking main circuit breakers in convertible load center, "OFF"	50–125 A	QOM1PA	11.00 DE2E
		100–225 A	QOM2PA	11.00 DE2E
Filler Plates	Fills opening in covers if twistout is removed in error	HOMFP	3.20	DE3C
	Fills main circuit breaker opening in convertible load centers	100–125 A	QOM1FP	20.30 DE3A
		150–225 A	QOM2FP	20.30 DE3A
Neutral Lugs	Field-installed for 14–2 AWG Al or 14–4 AWG Cu wire	LK70AN	10.10	DE3B
	Field-installed for 6–2/0 AWG Al/Cu wire	LK100AN	10.80	DE3B
	Field-installed for 14–2/0 AWG Al/Cu wire	LK125AN	22.10	DE3B
	Field-installed for 4 AWG–300 kcmil Al/Cu wire. Use in Series S, 150–225 A QO or HOM load center	LK225AN	33.20	DE3A
Miscellaneous	Retaining Kit	Secures circuit breaker to interior when used as a back-fed main. For HOM612L100F/S, RB and HOM48L125GC, GRB load centers.	HOM1RK	6.50 DE3C
		Secures ONE circuit breaker right side of interior when used as a back-fed main. For 100–125 A convertible main load centers, Series S01 and S02	HOM4RK2LA	14.70 DE3C
		Secures ONE circuit breaker right side of interior when used as a back-fed main. For 150–225 A convertible main load centers, Series S01 and S02	HOM4RK2HA	14.70 DE3C
		Secures circuit breaker to interior when used as a back-fed main. For 2P 150–200 A circuit breakers	HOM5RK	14.70 DE3C
	Lock Kit	Use with convertible indoor load center covers (Series S-1)	PK6FL	93.00 DE3A
Replacement Cover Directory Label	1 through 42 numbered universal replacement directory label for load center covers	LSDL	0.54 DE5	
Circuit Identification Stickers:	Circuit identification stickers for use on cover directory labels to identify branch circuits	PSDS	0.75 DE5	
Generator Circuit Breaker Interlock Kit	For use on "S" Series NEMA 1 and "S1" and "S2" Series NEMA 3R load centers. Interlocks a QOM1 2P main circuit breaker of a load center (100–125 A) with a Homeline 2P (15–125 A) branch circuit breaker.	HOMCRBGK1	105.00 DE3D	
		For use on "S" Series NEMA 1 and "S1" Series NEMA 3R load centers. Interlocks a QOM2 2P main circuit breaker of a load center (150–225 A) with a Homeline 2P (15–125 A) branch circuit breaker.	HOMCGK2	105.00 DE3D
		For use on "S2" Series NEMA 3R load centers. Interlocks a QOM2 2P main circuit breaker of a load center (150–225 A) with a Homeline 2P (15–125 A) branch circuit breaker.	HOMRBGK2	105.00 DE3D

**Table 1.43: 1Ø3W—120/240 Vac—UL Listed—10 kA Short Circuit Current Rating**

Mains Rating	Spaces	Max. Single Pole Circuits ▲	Max. Tandem Circuit Breakers	Load Center Box, Interior and Cover ■		Main Wire Size AWG/kcmil		Equipment Ground Bar Kit (Order Separately)		Box No. See Page 1-17
				Cat. No.	\$ Price (DE3C)	Al	Cu	Cat. No.	\$ Price (DE3A)	
<b>Main Lugs—Order HOM, HOMT, HOMGFI and HOMAFI Circuit Breakers from page 1-14</b>										
<b>Factory-installed Fixed Main Lugs</b>										
70 A	2	4	2	HOM24L70F/S★◆	59.00	12-3	14-4	PK3GTA1	11.40	2
100 A	6	12	6	HOM612L100F/S◆▼	78.00	8-1		PK7GTA	11.70	4
125 A	4	8	4	HOM48L125GC	86.00	12-2/0	14-2/0	PK7GTA	Factory-included	21
<b>Convertible Mains—Factory-installed Main Lugs</b>										
<b>QOM1 Main Frame Size—Convertible to 22 k AIR Main Circuit Breaker (See page 1-16)</b>										
125 A	8	16	8	HOM816L125C	132.00	6-2/0		PK15GTA	17.10	6
	8	16	8	HOM816L125TC	150.00			Factory-installed	—	6
	12	12	0	HOM12L125C	174.00			PK15GTA	17.10	6
	12	24	12	HOM1224L125TC	204.00			Factory-installed	—	6
	16	24	8	HOM1624L125C	260.00			PK15GTA	17.10	8
	20	20	0	HOM20L125C	237.00			PK15GTA	17.10	8
	20	24	4	HOM2024L125TC	288.00			Factory-installed	—	8
24	24	0	HOM24L125TC	344.00	Factory-installed	—	8			
<b>Convertible Mains—Factory-installed Main Lugs</b>										
<b>QOM2 Main Frame Size—Convertible to 22 k AIR Main Circuit Breaker (See page 1-16)</b>										
150 A	30	30	0	HOM30L150C	375.00	4-250		PK23GTA	21.30	10
	30	30	0	HOM30L150TC	396.00	4-250		Factory-installed	—	10
200 A	16	32	16	HOM1632L200TC	357.00	4-250		Factory-installed	—	9
	16	32	16	HOM1632L200TCFT△	575.00					
	20	40	20	HOM2040L200TC	417.00					
200 A	30	30	0	HOM30L200C	420.00	4-250		PK23GTA	21.30	10
	30	30	0	HOM30L200TC	464.00			Factory-installed	—	10
	30	40	10	HOM3040L200TC	479.00			Factory-installed	—	10
	40	40	0	HOM40L200C	618.00			PK23GTA	21.30	12
	40	40	0	HOM40L200TC	671.00			Factory-installed	—	12
	40	60	20	HOM4060L200TC	839.00			Factory-installed	—	12
	42	52	10	HOM4252L200TC	804.00			Factory-installed	—	12
225 A	42	42	0	HOM42L225C	732.00	6-250		PK23GTA	21.30	12
<b>Main Circuit Breaker—22 kA Short Circuit Current Rating</b>										
<b>Convertible Mains—Factory-installed Main Circuit Breaker</b>										
<b>QOM1 Main Frame Size—Convertible to Main Lugs or Lower Amperage Main Circuit Breaker (See page 1-16)</b>										
100 A	8	16	8	HOM816M100C	315.00	6-1		PK15GTA	17.10	5
	8	16	8	HOM816M100TC	333.00	6-1		Factory-installed	—	5
	12	12	0	HOM12M100C	294.00	6-2/0		PK15GTA	17.10	6
	12	24	12	HOM1224M100TC	384.00	6-2/0		Factory-installed	—	6
	20	20	0	HOM20M100C	396.00	6-1		PK15GTA	17.10	7
	24	24	0	HOM24M100C	513.00	6-2/0		PK15GTA	17.10	8
	30	30	0	HOM30M100C	672.00	6-2/0		PK23GTA	21.30	10
125 A	12	24	12	HOM1224M125C	606.00	6-2/0		PK15GTA	17.10	6
	12	24	12	HOM1224M125TC	620.00			Factory-installed	—	6
	24	24	0	HOM24M125C	710.00			PK15GTA	17.10	8
30	30	0	HOM30M125C	812.00			PK23GTA	21.30	10	
<b>Convertible Mains—Factory-installed Main Circuit Breaker</b>										
<b>QOM2 Main Frame Size—Convertible to Main Lugs or Lower Amperage Main Circuit Breaker (See page 1-16)</b>										
150 A	16	32	16	HOM1632M150TC	636.00	4-250		Factory-installed	—	9
	20	30	10	HOM2030M150TC	750.00			Factory-installed	—	9
	30	30	0	HOM30M150C	776.00			PK23GTA	21.30	10
200 A	12	24	12	HOM1224M200TC	572.00	4-250		Factory-installed	—	9
	16	32	16	HOM1632M200TC	675.00			Factory-installed	—	9
	20	40	20	HOM2040M200C	711.00			PK23GTA	21.30	9
	20	40	20	HOM2040M200TC	764.00			Factory-installed	—	9
	30	30	0	HOM30M200C	798.00			PK23GTA	21.30	10
	30	40	10	HOM3040M200TC	891.00			Factory-installed	—	10
	40	40	0	HOM40M200C	1019.00			PK23GTA	21.30	12
	40	60	20	HOM4060M200C	1367.00			PK23GTA	21.30	12
	42	42	0	HOM42M200C	1094.00			PK23GTA	21.30	12
42	52	10	HOM4252M200C	1313.00	PK23GTA	21.30	12			
225 A	42	42	0	HOM42M225C	1116.00	4-250		PK23GTA	21.30	12
<b>Universal Mains—No Factory-installed Main Circuit Breaker or Main Lugs</b>										
<b>QOM2 Main Frame Size—Field-install 22 k AIR Main Circuit Breaker or Main Lugs (See page 1-16)</b>										
200 A	16	32	16	HOM1632U200TC	293.00	4-250		Factory-installed	—	9
	20	40	20	HOM2040U200TC	357.00			Factory-installed	—	9
	30	40	10	HOM3040U200TC	530.00			Factory-installed	—	10

Above listings through 200 A mains rating meet Federal Specification W-P-115c as Type 1, Class 2.

- ▲ Maximum single pole branch circuits utilizing HOM and/or HOMT circuit breakers.
- C at end of catalog number indicates combination flush/surface cover included with device.
- ◆ F/S at end of catalog number indicates to order F for flush device or S for surface device. The cover does not have a door.
- ★ HOM-GFI and HOM-AFI branch circuit breakers are limited to number 10 maximum wire.
- ▼ 70 A maximum branch circuit breaker, 100 A maximum back feed main circuit breaker.
- △ Supplied with feed-thru lugs.

LOAD CENTERS 1

Table 1.44: 1Ø3W 120/240 Vac UL Listed Load Centers

Mains Rating	Spaces	Max. Single Pole Circuits ▲	Max. Tandem Circuit Breakers	Load Center Box, Interior and Cover		Main Wire Size AWG/kcmil		Equipment Ground Bar Kit (Order Separately)		Box No. See Page 1-17
				Cat. No. (DE3C)	\$ Price	Al	Cu	Cat. No. (DE3A)	\$ Price	
<b>Main Lugs (Order HOM, HOMT, HOMGFI and HOMAFI Circuit Breakers from Page 1-15), 10 kA Short Circuit Current Rating</b>										
<b>Factory-installed Fixed Main Lugs, 10 kA Short Circuit Current Rating</b>										
70 A	2	4	2	HOM24L70RB ■	111.00	12-3	14-4	PK4GTA	10.80	1R
100 A	6	12	6	HOM612L100RB△	129.00	8-1		PK7GTA	11.70	2R
125 A	4	8	4	HOM48L125GRB	137.00	12-2/0	14-2/0	PK7GTA Factory-included		15R
<b>Convertible Mains with Factory-installed Main Lugs ♦, QOM1 Main Frame Size—Convertible to 22 k AIR Main Circuit Breaker (See Below)</b>										
125 A	8	16	8	HOM816L125RB	248.00	6-2/0		PK15GTA	17.10	3R
	12	12	0	HOM12L125RB	234.00			PK15GTA	17.10	3R
	12	24	12	HOM1224L125RB	278.00			PK15GTA	17.10	3R
	20	20	0	HOM20L125RB	383.00			PK15GTA	17.10	4R
<b>Convertible Mains with Factory-installed Main Lugs ♦, QOM2 Main Frame Size—Convertible to 22 k AIR Main Circuit Breaker (See Below)</b>										
200 A	12	12	0	HOM12L200RB	423.00	4-250		PK23GTA	21.30	5R
	20	40	20	HOM2040L200RB	560.00			PK23GTA	21.30	6R
	30	30	0	HOM30L200RB	587.00			PK23GTA	21.30	7R
	30	40	10	HOM3040L200RB	759.00			—	—	—
	40	40	0	HOM40L200RB	911.00			PK23GTA	21.30	14R
	40	60	20	HOM4060L200RB	1139.00			PK23GTA	21.30	14R
	42	52	10	HOM4252L200RB	1092.00			PK23GTA	21.30	14R

**Main Circuit Breaker (Order HOM, HOMT, HOMGFI and HOMAFI Circuit Breakers from Page 1-15), 22 kA Short Circuit Current Rating**

<b>Convertible Mains with Factory-installed Main Circuit Breaker, QOM1 Main Frame Size—Convertible to Main Lugs or Lower Amperage Main Circuit Breaker (See Below) ★</b>											
100 A	8	16	8	HOM816M100RB	429.00	6-1		PK15GTA	17.10	3R	
	12	12	0	HOM12M100RB	416.00			PK15GTA	17.10	3R	
	20	20	0	HOM20M100RB	531.00			6-2/0	PK15GTA	17.10	4R
	24	24	0	HOM24M100RB	606.00			PK15GTA	17.10	6R	
125 A	8	16	8	HOM816M125RB	716.00	6-2/0		PK15GTA	17.10	3R	
	24	24	0	HOM24M125RB	858.00			PK15GTA	17.10	6R	
<b>Convertible Mains with Factory-installed Main Circuit Breaker, QOM2 Main Frame Size—Convertible to Main Lugs or Lower Amperage Main Circuit Breaker (See Below)</b>											
200 A	30	30	0	HOM30M150RB	978.00	4-250		PK23GTA	21.30	7R	
	20	40	20	HOM2040M200RB	872.00			PK23GTA	21.30	6R	
	30	30	0	HOM30M200RB	1004.00			PK23GTA	21.30	7R	
	30	40	10	HOM3040M200RB	1152.00			PK23GTA	21.30	7R	
	40	40	0	HOM40M200RB	1277.00			PK23GTA	21.30	14R	
	40	60	20	HOM4060M200RB	1596.00			PK23GTA	14.20	14R	
225 A	42	52	10	HOM4252M200RB	1532.00	PK23GTA	14.20	14R			
	16	24	8	HOM1624M225RB	1182.00	4-250		PK15GTA	17.10	7R	
42	42	0	HOM42M225RB	1323.00	PK23GTA			21.30	14R		
<b>Convertible Mains with Factory-installed Main Circuit Breaker with Feed-thru Lugs ♦</b>											
150 A	8	16	8	HOM816M150FTRB	785.00	4-250		PK15GTAL	35.00	6R	
200 A ▼	8	16	8	HOM816M200FTRB	785.00	4-250		PK15GTAL	35.00	6R	
<b>Universal Main with Feed-thru Lugs—No Factory-installed Main Circuit Breaker or Main Lugs ♦</b>											
<b>QOM2 Main Frame Size—Field-install 22 k AIR Main Circuit Breaker or Main Lugs (See Kits Below)</b>											
200 A	8	16	8	HOM816U200FTRB	446.00	4-250		PK15GTAL	35.00	6R	

Above listings through 200 A mains rating meet Federal Specification W-P-115c as Type 1, Class 2.

- ▲ Maximum single pole branch circuits utilizing HOM and/or HOMT circuit breakers.
- HOM-GFI and HOM-AFI branch circuit breakers are limited to number 10 maximum wire.
- ♦ Side hinge door device allow 1-1/4 in. on left side for door to open.
- ★ 22 k AIR main circuit breaker UL Listed for use ahead of HOM and HOMT 10 k AIR branch circuit breakers to permit their application on systems with up to 22 kA available fault current.
- ▼ Rated 200 A when using copper wire. Reference NEC® Table 310.15(B)(6) when using Al wire.
- △ 70 A maximum branch circuit breaker, 100 A maximum back feed main circuit breaker.

**Field-Installed Kits**

Table 1.45: Field-Installed Mains, Convertible Load Centers Only

Field-Installed Main Type	Frame Size	Main □ Ampere Rating	Use on Convertible Load Center with Mains Rating	Cat. No.	\$ Price (DE3A)	Lug Wire Size ▽ AWG/kcmil	
Main Lug ♦	—	125 A	100-125 A	QOL125	44.10	6-2/0 Al or Cu	
		225 A	150-225 A	QOL225	104.00	6-300 Al or Cu	
Main Circuit Breaker ★	QOM1	50 A	100-125 A	QOM50VH	140.00	12-2/0 Al or Cu	
		60 A	100-125 A	QOM60VH	140.00		
		70 A	100-125 A	QOM70VH	140.00		
		80 A	100-125 A	QOM80VH	201.00		
		90 A	100-125 A	QOM90VH	201.00		
		100 A	100-125 A	QOM100VH	201.00		
	QOM2●	110 A	125 A	125 A	QOM110VH	468.00	4-300 Al or Cu
		125 A	125 A	125 A	QOM125VH	468.00	
		100 A	150-225 A	150-225 A	QOM2100VH	468.00	
		125 A	150-225 A	150-225 A	QOM2125VH	468.00	
		150 A	150-225 A	150-225 A	QOM2150VH	468.00	
		175 A	200-225 A	200-225 A	QOM2175VH	468.00	
	200 A	200-225 A	200-225 A	QOM2200VH	468.00		
	225 A	225 A	225 A	QOM2225VH	468.00		

- Do not exceed the load center mains rating.
- ♦ If main circuit breaker knockout has been removed from the load center's trim, order appropriate filler plate from page 1-13.
- ★ 22 k AIR main circuit breaker UL Listed for use ahead of HOM and HOMT 10 k AIR branch circuit breakers to permit their application on systems with up to 22 kA available fault current.
- ▽ Wire range listed for main device kits is the wire range of that device. To find out maximum wire size permitted in a particular load center per UL, see pages 1-5 through 1-11 under Main Wire Size.
- Add suffix 1021 for 120, 208, 240 Vac shunt trip. Add \$126.00.

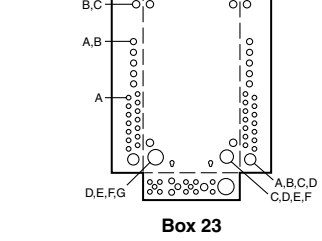
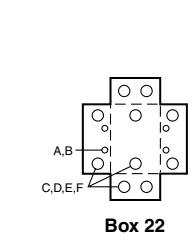
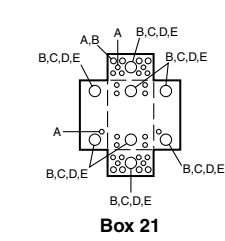
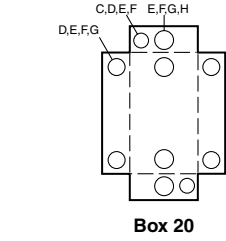
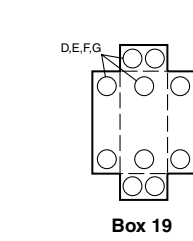
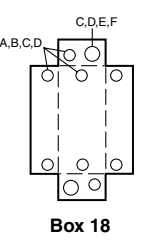
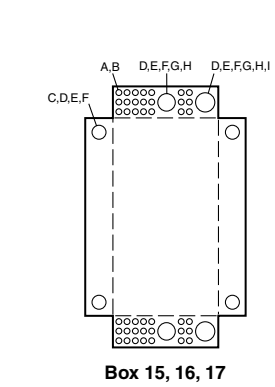
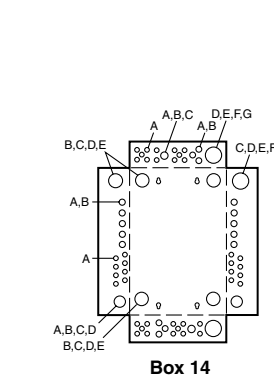
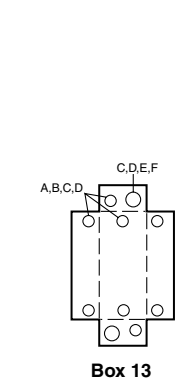
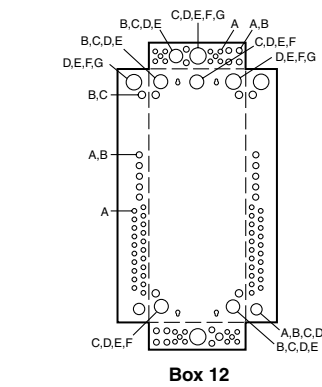
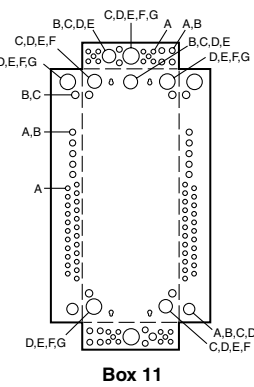
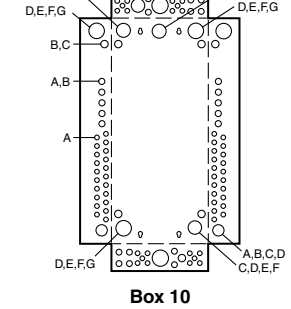
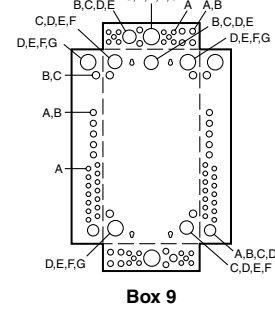
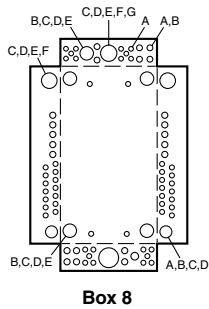
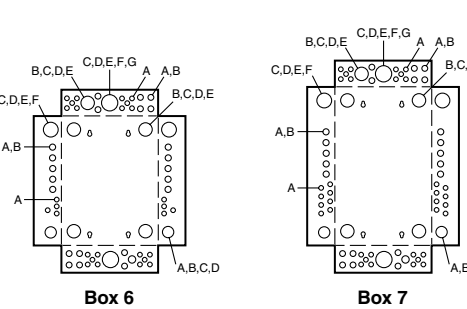
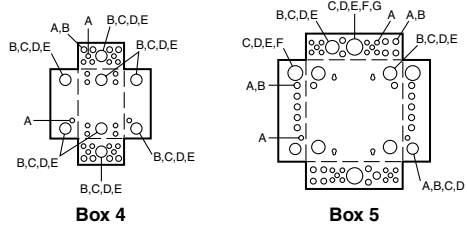
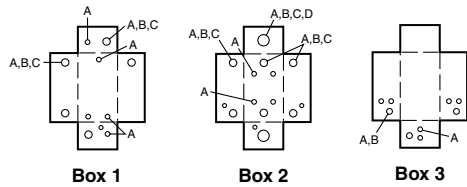
**Indoor Knockout Information and Enclosure Dimensions**

**Table 1.46: Enclosure Dimensions**

Box No.	Dimensions						Box No.	Dimensions					
	W		H		D			W		H		D	
	in.	mm	in.	mm	in.	mm		in.	mm	in.	mm	in.	mm
1	3.81	97	6.72	171	3.00	76	13	5.88	149	13.12	333	3.38	86
2	4.81	122	9.30	236	3.19	81	14	14.25	362	20.92	531	3.75	95
3	4.81	122	9.30	236	3.19	81	15	20.00	508	50.00	1270	5.75	146
4	8.88	226	12.57	319	3.80	97	16	20.00	508	62.00	1727	5.75	146
5	14.25	362	14.92	379	3.75	95	17	20.00	508	53.00	1346	5.75	146
6	14.25	362	17.92	455	3.75	95	18	5.88	149	16.12	409	3.38	86
7	14.25	362	20.92	531	3.75	95	19	7.56	192	23.12	587	4.25	108
8	14.25	362	26.04	661	3.75	95	20	9.62	244	26.12	663	4.75	121
9	14.25	362	29.86	758	3.75	95	21	8.88	226	14.80	376	3.80	97
10	14.25	362	33.78	858	3.75	95	22	8.55	217	23.92	608	3.95	100
11	14.25	362	37.98	965	3.75	95	23	14.25	362	29.86	758	3.75	95
12	14.25	362	39.37	1000	3.75	95							

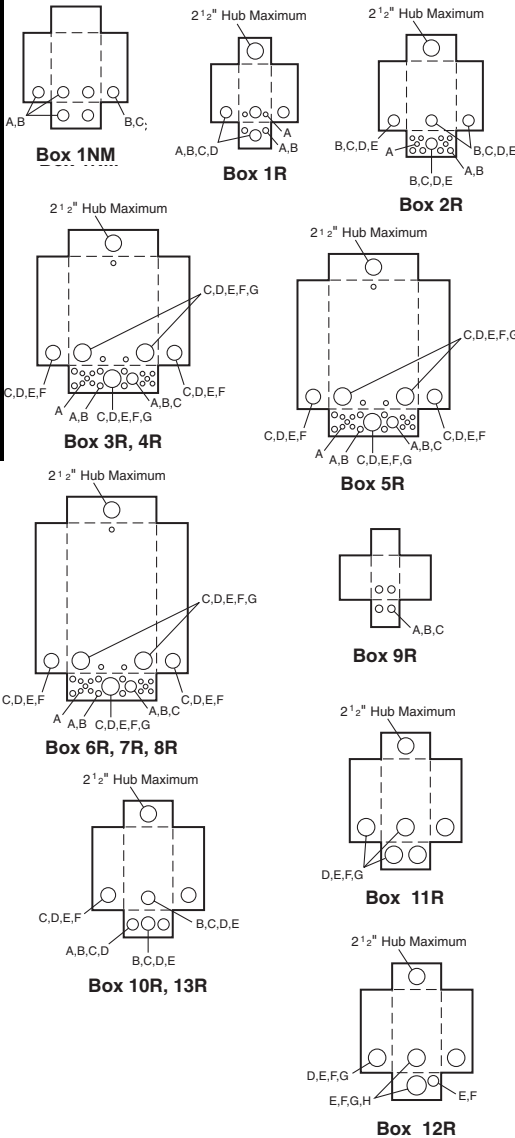
**Table 1.47: Knockout Information**

Symbol	Knockouts								
	A	B	C	D	E	F	G	H	I
Conduit Size	1/2	3/4	1	1-1/4	1-1/2	2	2-1/2	3	3-1/2



LOAD CENTERS

LOAD CENTERS



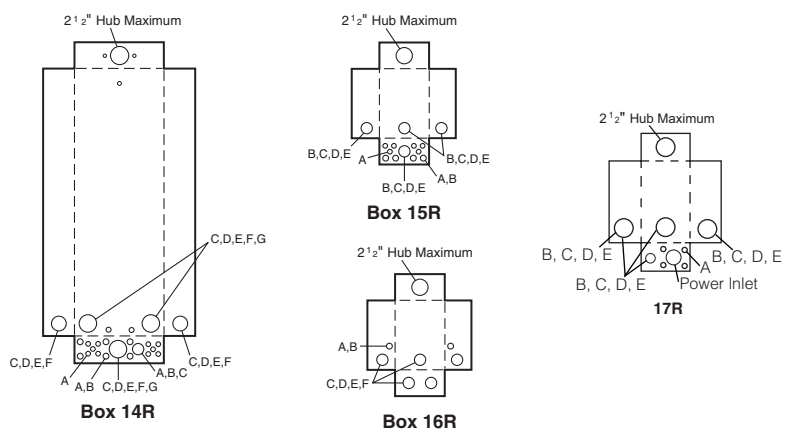
**Table 1.48: Enclosure Dimensions**

Box No.	Dimensions					
	W		H		D	
	in.	mm	in.	mm	in.	mm
1NM	6.52	166	8.79	223	3.90	99
1R▲	4.88	124	9.38	238	4.00	102
2R	8.88	226	12.65	321	4.27	108
3R	14.75	375	18.92	481	4.52	115
4R	14.75	375	22.06	560	4.52	115
5R	14.75	375	26.04	661	4.52	115
6R	14.75	375	29.86	758	4.52	115
7R	14.75	375	33.78	858	4.52	115
8R	14.75	375	37.98	965	4.52	115
9R	4.56	116	6.50	165	3.88	99
10R	6.92	176	13.18	335	4.12	105
11R	7.56	192	23.24	590	4.75	121
12R	9.62	244	26.24	666	5.50	140
13R	6.92	176	16.18	411	4.12	105
14R	14.75	375	39.37	1000	4.52	115
15R	8.88	226	14.80	376	4.27	108
16R	8.55	217	24.75	629	4.16	106
17R	8.88	226	12.65	321	4.27	108

▲ HOME250SPA and QO260NATR top endwall has no hub opening.

**Table 1.49: Knockout Information**

Symbol	Knockouts							
	A	B	C	D	E	F	G	H
	Conduit Size	1/2 in.	3/4 in.	1 in.	1-1/4 in.	1-1/2 in.	2 in.	2-1/2 in.



"RB" Hub

**Bolt-On Hubs**

Square D equipment with "R" or "RB" suffix, designated NEMA 3R rainproof construction, utilizes bolt-on hubs listed below. "RB" devices will accept 3/4 in. through 2-1/2 in. bolt-on hubs without the use of reducers. Off-center conduit thread openings and elongated mounting holes provide quick and easy adjustment to eliminate costly conduit offsets and bends. Catalog suffix "R" devices require 3 in. through 4 in. field cut opening. Hubs are suitable for use with conduit having ANSI standard taper pipe thread.

**Table 1.50: Bolt-On Hubs UL Listed for "RB" Devices**

Conduit Size	3/4 in.	1 in.	1-1/4 in.	1-1/2 in.	2 in.	2-1/2 in.
Hub Cat. No.	B075	B100	B125	B150	B200	B250
\$ Price	33.30	33.30	33.30	33.30	61.35	102.00

■ Closing cap (Cat. No. BCAP) is provided factory-installed on each device having "RB" suffix. Price if ordered separately; \$2.50

**Table 1.51: Bolt-On Hubs UL Listed for Mounting in Field-Cut Opening**

Conduit Size	3 in.	3-1/2 in.	4 in.
Hub Cat. No.	B300	B350	B400
\$ Price	186.00	300.00	368.00

Designed for mounting in field cut opening. Includes gasket and four mounting bolts and nuts.