

DRAWING NO.  
SE208119

REV	DATE	DESCRIPTION	ECO	BY	C'H'K.
M	05/21/2014 11:05:00 AM	CAT. # YA38L2TC3BE10FX ADDED TO THE TABLE	36112	BSB	PB

CONNECTOR SIZE	TOLERANCES						
	B	C	E	K DIA.	L	N	O.D.
-10C	±.03	±.04	±.02	±.02	±.06	±.03	±.01
8C - 25	±.06	±.04	±.02	±.02	±.09	±.03	±.01
26 - 34	±.08	±.04	±.02	±.02	±.12	±.03	±.01
35 AND UP	±.09	±.06	±.02	±.02	±.15	±.06	±.01

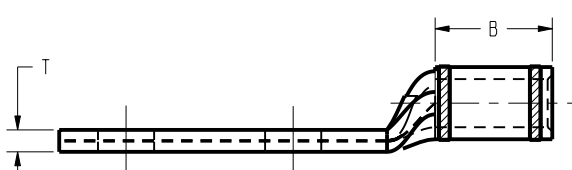
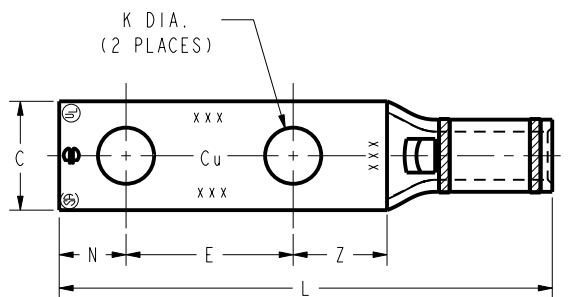


FIG. 1

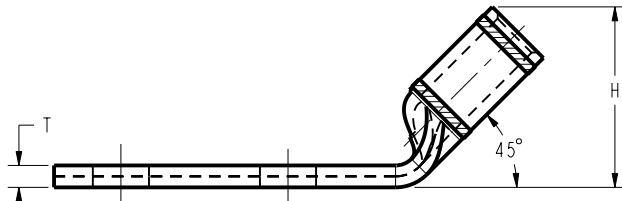
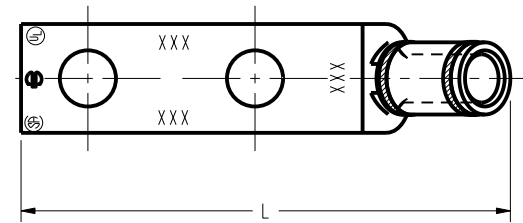


FIG. 2

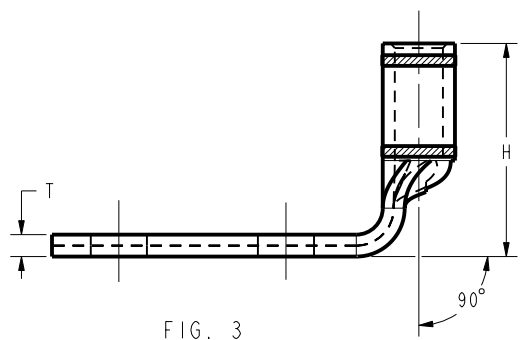
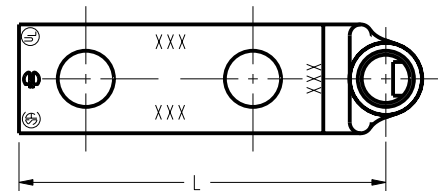


FIG. 3

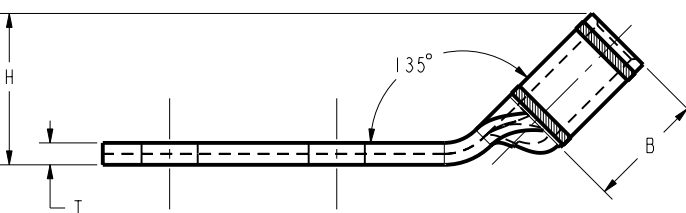
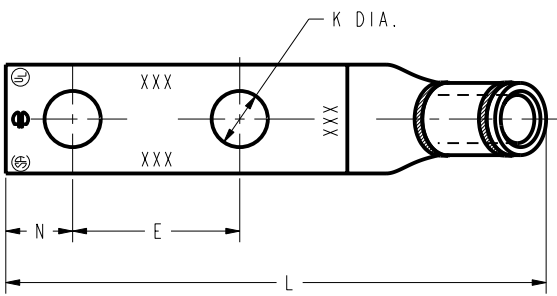


FIG. 4

NOTES:

1. MATERIAL : COPPER TUBING.
2. FINISH: TIN PLATED.
3. CATALOG # PT6515 ADAPTOR IS REQUIRED TO USE "U" DIES IN Y45 SERIES TOOLS.
4. CATALOG # PUADP-1 ADAPTOR IS REQUIRED TO USE "U" DIES IN Y46 SERIES TOOLS.
5. NAVY CABLE SIZE MAY BE OMITTED ON SOME SIZES BECAUSE OF SPACE LIMITATIONS.
6. PERMANENT DIE IN TOOLING.
7. DIMENSIONS IN [ ] BRACKETS ARE IN MILLIMETERS, ROUNDED OFF TO THE NEAREST MILLIMETER UNLESS OTHERWISE NOTED. METRIC DIMENSIONS ARE FOR REFERENCE ONLY.
8. IF HIGHEST REVISION OF THIS SALES PRINT IS AFFECTED. UPDATE PRINT WSA208758 TO INCLUDE THE NEW REVISION.
9. ALL OF THE CATALOG NUMBERS FOR THESE HYLUGS™ CAN BE ORDERED WITH OR WITHOUT SKIVE.  
EXAMPLE: YAV28L-TC14-FX (SKIVE)  
YAG28L-TC14-FX (NO SKIVE)
10. THE YA30L-FX SIZES SHOWN ON SE208119 SHEET 11 ARE NOT UL/CSA LISTED USING ANY CLASS OF 4/0 FLEX COPPER CONDUCTOR.

TO ORDER BURNDY® PRODUCTS CALL  
 UNITED STATES  
 1-800-346-4175 (LONDONDERRY, NH)  
 CANADA:  
 1-800-361-6975 (QUEBEC)  
 1-800-387-6487 (ALL OTHER PROVINCES)  
 FOR PRODUCT INFO: <http://www.burndy.com>

HYLUG™	
ITEM NO:	N/A
CAT. NO:	YAV-L-2TC-FX, YA-L-2TC-FX
DRAWN BY:	D.FILLION 12/04/92
CHECKER:	K.HENRY 12/10/92
DSN APPVL:	C.PALAGI 12/14/92
MFG APPVL:	N/A
QA APPVL:	A.LLOYD 12/14/92
MKT APPVL:	T.NELSON 12/14/92
PROJ #:	---
SCALE:	NTS
PROJECT #:	---
DOCUMENT TYPE:	Sales
REL LEVEL:	Released
DRAWING NO:	SE208119
REV:	M
SHEET 1 OF 19	

REV: PE0200

DRAWING NO.  
SE208119

7

6

5


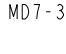
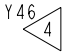
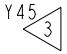
4

3

2

1

REV	DATE	DESCRIPTION	ECO	BY	C'H'K.
M	05/21/2014 11:05:00 AM	CAT. # YA8CL2TC38E10FX ADDED TO THE TABLE	36112	BSB	PB

D	CATALOG NO.	FIG. NO.	CONDUCTOR			BOLT SIZE	DIMENSIONS								BURNDY INSTALLATION TOOLING (# CRIMPS)													
			FLEX	CODE (AWG)	NAVY 		B	C	E	H	K	L	N	O.D.	T REF.	Z MIN.	DIE INDEX	COLOR CODE	MECHANICAL RATCHET			HYDRAULIC			DIELESS (# CRIMPS)	WIRE STRIP LENGTH		
																			MD7-34R	OUR840	Y8MRB-1 Y2MR 	Y750 Y35 Y39	Y46 	Y45 				
	YA8CL2TC10	1	#8 WELD 37/24	#8 AWG	23	#10	.44 [11]		.63 [16]	.68 [17]	.21 [5]	1.84 [47]	.25 [6]	.27 [7]		.08 [2]	.28 [7]	49	RED	W8CRT (1) W8CVT (1)	X8CRT (1) W8CVT (1)	(1 CRIMP)	U8CRT (1)	U8CRT (1)	U8CRT (1)		1/2"	
	YA8CL2TC1045	2						.41 [10]	.63 [16]	.68 [17]	.21 [5]	1.83 [46]	.25 [6]			.08 [2]	.28 [7]											
	YA8CL2TC1090	3							.63 [16]	.80 [20]		1.37 [35]																
	YA8CL2TC14	1										1.95 [50]																
C	YA8CL2TC1445	2				1/4		.44 [11]	.63 [16]	.67 [17]	.27 [7]	1.94 [49]	.31 [8]		.08 [2]	.34 [9]												
	YA8CL2TC1490	3							.63 [16]	.79 [20]		1.49 [38]																
	YA8CL2TC14E1	1										2.33 [59]																
	YA8CL2TC14E145	2				1/4		.44 [11]	1.00 [25]	.67 [17]	.27 [7]	2.32 [59]	.31 [8]		.08 [2]	.34 [9]												
	YA8CL2TC14E190	3							1.00 [25]	.79 [20]		1.87 [47]																
	YA8CL2TC14E2	1										2.08 [53]																
	YA8CL2TC14E245	2				1/4		.44 [11]	.75 [19]	.67 [17]	.27 [7]	2.07 [52]	.31 [8]		.08 [2]	.34 [9]												
	YA8CL2TC14E290	3							.75 [19]			1.62 [41]																
B	YA8CL2TC38	1										2.52 [64]																
	YA8CL2TC3845	2				3/8		.58 [15]	1.00 [25]	.66 [17]	.40 [10]	2.46 [62]	.41 [10]		.06 [2]	.43 [11]												
	YA8CL2TC3890	3	#8 WELD 37/24	#8 AWG	23		.44 [11]		.75 [19]			2.05 [52]		.27 [7]				49	RED	W8CRT (1) W8CVT (1)	X8CRT (1) W8CVT (1)	(1 CRIMP)	U8CRT (1)	U8CRT (1)	U8CRT (1)		1/2"	

SEE SHEET 1 OF 19 FOR NOTES

REV: PE0200

TO ORDER BURNDY® PRODUCTS CALL UNITED STATES 1-800-346-4175 (LONDONDERRY, NH) CANADA: 1-800-361-6975 (QUEBEC) 1-800-387-6487 (ALL OTHER PROVINCES) FOR PRODUCT INFO: <a href="http://www.burndy.com">http://www.burndy.com</a>		HYLUG™ ITEM NO: N/A CAT. NO: YA8CL-2TC- (TABLE) DRAWN BY: D.FILLION 12/04/92 CHECKER: K.HENRY 12/10/92 DSN APPVL: C.PALAGI 12/14/92 MFG APPVL: N/A -- QA APPVL: A.LLOYD 12/14/92 MKT APPVL: T.NELSON 12/14/92 PROD FAM: -- PROJECT #: -- DOCUMENT TYPE: Sales REL LEVEL: Released		SCALE: NTS DRAWING NO: SE208119 SHEET 2 OF 19 REV: M	
--	--	---	--	---	--

8

7

6

5

4

3

2

1

D	CATALOG NO.	CONDUCTOR			BOLT SIZE	FIG NO.	DIMENSIONS							INSTALLATION TOOLING (# CRIMPS)																																					
		FLEX	CODE (AWG)	NAVY			B	C	E	H	K	L	N	O.D.	T REF.	Z MIN.	DIE INDEX	COLOR CODE	MECHANICAL			HYDRAULIC			DIELESS (# CRIMPS)	WIRE STRIP LENGTH																									
																			MD7-34R	OUR840	Y2MR (1)	Y750 Y35 Y39 PAT750	Y46 PAT46	Y45																											
	YAV6CL2TC10FX	#6 WELD 61/24	#6 AWG	30	#10	1	.50 [13]	.45 [11]	.63 [16]	.78 [20]	.21 [5]	1.94 [49]	.25 [6]	.31 [8]	.08 [2]	.26 [7]	7 OR 374	BLUE	W5CRT X5CRT W5CVT (1)	X5CRT W5CVT (1)	(1 CRIMP)	U5CRT (1)	U5CRT (1)	U5CRT (1)		9/16"																									
	YAV6CL2TC10FX45																										#6 WELD 61/24	#6 AWG	30	#10	2	.50 [13]	.45 [11]	.63 [16]	.78 [20]	.21 [5]	1.91 [49]	.25 [6]	.31 [8]	.08 [2]	.26 [7]	7 OR 374	BLUE	W5CRT X5CRT W5CVT (1)	X5CRT W5CVT (1)	(1 CRIMP)	U5CRT (1)	U5CRT (1)	U5CRT (1)		9/16"
	YAV6CL2TC10FX90																																																		
	YAV6CL2TC10E2FX	#6 WELD 61/24	#6 AWG	30	#10	1	.50 [13]	.48 [12]	.75 [19]	.78 [20]	.21 [5]	2.06 [52]	.25 [6]	.31 [8]	.08 [2]	.26 [7]	7 OR 374	BLUE	W5CRT X5CRT W5CVT (1)	X5CRT W5CVT (1)	(1 CRIMP)	U5CRT (1)	U5CRT (1)	U5CRT (1)		9/16"																									
	YAV6CL2TC10E2FX45																										#6 WELD 61/24	#6 AWG	30	#10	2	.50 [13]	.48 [12]	.75 [19]	.78 [20]	.21 [5]	2.02 [51]	.25 [6]	.31 [8]	.08 [2]	.26 [7]	7 OR 374	BLUE	W5CRT X5CRT W5CVT (1)	X5CRT W5CVT (1)	(1 CRIMP)	U5CRT (1)	U5CRT (1)	U5CRT (1)		9/16"
	YAV6CL2TC10E2FX90																																																		
	YAV6CL2TC10E4FX	#6 WELD 61/24	#6 AWG	30	#10	1	.50 [13]	.45 [11]	.69 [17]	.78 [20]	.21 [5]	2.00 [51]	.25 [6]	.31 [8]	.08 [2]	.26 [7]	7 OR 374	BLUE	W5CRT X5CRT W5CVT (1)	X5CRT W5CVT (1)	(1 CRIMP)	U5CRT (1)	U5CRT (1)	U5CRT (1)		9/16"																									
	YAV6CL2TC10E4FX45																										#6 WELD 61/24	#6 AWG	30	#10	2	.50 [13]	.45 [11]	.69 [17]	.78 [20]	.21 [5]	1.98 [50]	.25 [6]	.31 [8]	.08 [2]	.26 [7]	7 OR 374	BLUE	W5CRT X5CRT W5CVT (1)	X5CRT W5CVT (1)	(1 CRIMP)	U5CRT (1)	U5CRT (1)	U5CRT (1)		9/16"
	YAV6CL2TC10E4FX90																																																		
	YAV6CL2TC10E9FX	#6 WELD 61/24	#6 AWG	30	#10	1	.50 [13]	.48 [12]	.50 [13]	.78 [20]	.21 [5]	1.81 [46]	.25 [6]	.31 [8]	.08 [2]	.26 [7]	7 OR 374	BLUE	W5CRT X5CRT W5CVT (1)	X5CRT W5CVT (1)	(1 CRIMP)	U5CRT (1)	U5CRT (1)	U5CRT (1)		9/16"																									
	YAV6CL2TC10E9FX45																										#6 WELD 61/24	#6 AWG	30	#10	2	.50 [13]	.48 [12]	.50 [13]	.78 [20]	.21 [5]	1.77 [45]	.25 [6]	.31 [8]	.08 [2]	.26 [7]	7 OR 374	BLUE	W5CRT X5CRT W5CVT (1)	X5CRT W5CVT (1)	(1 CRIMP)	U5CRT (1)	U5CRT (1)	U5CRT (1)		9/16"
	YAV6CL2TC10E9FX90																																																		
	YAV6CL2TC14FX	#6 WELD 61/24	#6 AWG	30	1/4	1	.50 [13]	.48 [12]	.63 [16]	.78 [20]	.27 [7]	2.06 [52]	.31 [8]	.08 [2]	.34 [9]	7 OR 374	BLUE	W5CRT X5CRT W5CVT (1)	X5CRT W5CVT (1)	(1 CRIMP)	U5CRT (1)	U5CRT (1)	U5CRT (1)	MECHANICAL: MY29-11 (1)	9/16"																										
	YAV6CL2TC14FX45																									#6 WELD 61/24	#6 AWG	30	1/4	2	.50 [13]	.48 [12]	.63 [16]	.78 [20]	.27 [7]	2.02 [51]	.31 [8]	.08 [2]	.34 [9]	7 OR 374	BLUE	W5CRT X5CRT W5CVT (1)	X5CRT W5CVT (1)	(1 CRIMP)	U5CRT (1)	U5CRT (1)	U5CRT (1)	MECHANICAL: MY29-11 (1)	9/16"		
	YAV6CL2TC14FX90																																																	#6 WELD 61/24	#6 AWG
	YAV6CL2TC14E1FX	#6 WELD 61/24	#6 AWG	30	1/4	1	.50 [13]	.48 [12]	1.00 [25]	.78 [20]	.27 [7]	2.44 [62]	.31 [8]	.08 [2]	.34 [9]	7 OR 374	BLUE	W5CRT X5CRT W5CVT (1)	X5CRT W5CVT (1)	(1 CRIMP)	U5CRT (1)	U5CRT (1)	U5CRT (1)	HYDRAULIC: Y644M (1) PAT644M(1)	9/16"																										
	YAV6CL2TC14E1FX45																									#6 WELD 61/24	#6 AWG	30	1/4	2	.50 [13]	.48 [12]	1.00 [25]	.78 [20]	.27 [7]	2.40 [61]	.31 [8]	.08 [2]	.34 [9]	7 OR 374	BLUE	W5CRT X5CRT W5CVT (1)	X5CRT W5CVT (1)	(1 CRIMP)	U5CRT (1)	U5CRT (1)	U5CRT (1)	HYDRAULIC: Y644M (1) PAT644M(1)	9/16"		
	YAV6CL2TC14E1FX90																																																	#6 WELD 61/24	#6 AWG
	YAV6CL2TC14E2FX	#6 WELD 61/24	#6 AWG	30	1/4	1	.50 [13]	.48 [12]	.75 [19]	.78 [20]	.27 [7]	2.16 [55]	.31 [8]	.08 [2]	.34 [9]	7 OR 374	BLUE	W5CRT X5CRT W5CVT (1)	X5CRT W5CVT (1)	(1 CRIMP)	U5CRT (1)	U5CRT (1)	U5CRT (1)	HYDRAULIC: Y644M (1) PAT644M(1)	9/16"																										
	YAV6CL2TC14E2FX45																									#6 WELD 61/24	#6 AWG	30	1/4	2	.50 [13]	.48 [12]	.75 [19]	.78 [20]	.27 [7]	2.15 [55]	.31 [8]	.08 [2]	.34 [9]	7 OR 374	BLUE	W5CRT X5CRT W5CVT (1)	X5CRT W5CVT (1)	(1 CRIMP)	U5CRT (1)	U5CRT (1)	U5CRT (1)	HYDRAULIC: Y644M (1) PAT644M(1)	9/16"		
	YAV6CL2TC14E2FX90																																																	#6 WELD 61/24	#6 AWG
	YAV6CL2TC516FX	#6 WELD 61/24	#6 AWG	30	5/16	1	.50 [13]	.52 [13]	1.00 [25]	.78 [20]	.33 [8]	2.50 [63]	.34 [9]	.07 [2]	.37 [9]	7 OR 374	BLUE	W5CRT X5CRT W5CVT (1)	X5CRT W5CVT (1)	(1 CRIMP)	U5CRT (1)	U5CRT (1)	U5CRT (1)	HYDRAULIC: Y644M (1) PAT644M(1)	9/16"																										
	YAV6CL2TC516FX45																									#6 WELD 61/24	#6 AWG	30	5/16	2	.50 [13]	.52 [13]	1.00 [25]	.78 [20]	.33 [8]	2.45 [62]	.34 [9]	.07 [2]	.37 [9]	7 OR 374	BLUE	W5CRT X5CRT W5CVT (1)	X5CRT W5CVT (1)	(1 CRIMP)	U5CRT (1)	U5CRT (1)	U5CRT (1)	HYDRAULIC: Y644M (1) PAT644M(1)	9/16"		
	YAV6CL2TC516FX90																																																	#6 WELD 61/24	#6 AWG
	YAV6CL2TC38FX	#6 WELD 61/24	#6 AWG	30	3/8	1	.50 [13]	.58 [15]	1.00 [25]	.77 [19]	.40 [10]	2.62 [67]	.41 [10]	.06 [2]	.43 [11]	7 OR 374	BLUE	W5CRT X5CRT W5CVT (1)	X5CRT W5CVT (1)	(1 CRIMP)	U5CRT (1)	U5CRT (1)	U5CRT (1)	HYDRAULIC: Y644M (1) PAT644M(1)	9/16"																										
	YAV6CL2TC38FX45																									#6 WELD 61/24	#6 AWG	30	3/8	2	.50 [13]	.58 [15]	1.00 [25]	.77 [19]	.40 [10]	2.56 [65]	.41 [10]	.06 [2]	.43 [11]	7 OR 374	BLUE	W5CRT X5CRT W5CVT (1)	X5CRT W5CVT (1)	(1 CRIMP)	U5CRT (1)	U5CRT (1)	U5CRT (1)	HYDRAULIC: Y644M (1) PAT644M(1)	9/16"		
	YAV6CL2TC38FX90																																																	#6 WELD 61/24	#6 AWG
	YAV6CL2NTCFX	#6 WELD 61/24	#6 AWG	30	1/2	1	.50 [13]	.83 [21]	1.75 [44]	.80 [20]	.56 [14]	3.81 [97]	.62 [16]	.12 [3]	.65 [17]	7 OR 374	BLUE	W5CRT X5CRT W5CVT (1)	X5CRT W5CVT (1)	(1 CRIMP)	U5CRT (1)	U5CRT (1)	U5CRT (1)	HYDRAULIC: Y644M (1) PAT644M(1)	9/16"																										
	YAV6CL2NTCFX45																									#6 WELD 61/24	#6 AWG	30	1/2	2	.50 [13]	.83 [21]	1.75 [44]	.80 [20]	.56 [14]	3.67 [93]	.62 [16]	.12 [3]	.65 [17]	7 OR 374	BLUE	W5CRT X5CRT W5CVT (1)	X5CRT W5CVT (1)	(1 CRIMP)	U5CRT (1)	U5CRT (1)	U5CRT (1)	HYDRAULIC: Y644M (1) PAT644M(1)	9/16"		
	YAV6CL2NTCFX90																																																	#6 WELD 61/24	#6 AWG
	YAV6CL2TC14FX135	#6 WELD 61/24	#6 AWG	30	1/4	4	.50 [13]	.48 [12																																											

D	CATALOG NO.	CONDUCTOR			BOLT SIZE	FIG. NO.	DIMENSIONS							INSTALLATION TOOLING (# CRIMPS)													
		FLEX	CODE (AWG)	NAVY			B	C	E	H	K	L	N	O.D.	T REF.	Z MIN.	DIE INDEX	COLOR CODE	MECHANICAL			HYDRAULIC				DIELESS (# CRIMPS)	WIRE STRIP LENGTH
																			MD7-34R	OUR840	Y2MR (2)	BCT500 Y500CT	Y35, Y39 Y750, BAT35 BAT750, PAT750	Y46	Y45		
	YAV4CL2NT10FX	#4 WELD 91/24 105/24	#4 AWG	40 & 50	#10	1	.50	.41	.63	--	.21	1.95	.25	.38	.09	.27	8 OR 346	GRAY	W4CRT X4CRT W4CVT (1)	X4CRT W4CVT (1)	(2 CRIMP)	W4CRT X4CRT W4CVT (1)	U4CRT (1)	U4CRT (1)	U4CRT (1)	MECHANICAL: MY29-11 (1) HYDRAULIC: Y644M (1) BAT644M	9/16"
	YAV4CL2NT10FX45				[M5]	2	[13]	[10]	[16]	.84 [21]	[5]	1.94 [49]	[6]	[10]	[2]	[7]											
	YAV4CL2NT10FX90					3				.94 [24]		1.43 [36]															
	YAV4CL2NT10E1FX				#10	1				--		2.33 [59]															
	YAV4CL2NT10E1FX45				[M5]	2		.41 [10]	1.00 [25]	.84 [21]	[5]	2.31 [59]	[6]		.09 [2]	.27 [7]											
	YAV4CL2NT10E1FX90					3				.94 [24]		1.80 [46]															
	YAV4CL2TC14FX				1/4	1				--		2.08 [53]															
	YAV4CL2TC14FX45				[M6]	2		.55 [14]	.63 [16]	.84 [21]	[7]	2.06 [52]	[8]		.09 [2]	.34 [9]											
	YAV4CL2TC14FX90					3				.94 [24]		1.55 [39]															
	YAV4CL2TC14E2FX				1/4	1				--		2.20 [56]															
	YAV4CL2TC14E2FX45				[M6]	2		.55 [14]	.75 [19]	.84 [21]	[7]	2.19 [56]	[8]		.09 [2]	.34 [9]											
	YAV4CL2TC14E2FX90					3				.94 [24]		1.68 [43]															
	YAV4CL2TC14E1FX				1/4	1				--		2.45 [62]															
	YAV4CL2TC14E1FX45				[M6]	2		.55 [14]	1.00 [25]	.84 [21]	[7]	2.44 [62]	[8]		.09 [2]	.34 [9]											
	YAV4CL2TC14E1FX90					3				.94 [24]		1.93 [49]															
	YAV4CL2TC38FX				3/8	1				--		2.68 [68]															
	YAV4CL2TC38FX45				[M10]	2		.58 [15]	1.00 [25]	.87 [22]	[10]	2.64 [67]	[10]		.08 [2]	.43 [11]											
	YAV4CL2TC38FX90					3				.97 [25]		2.11 [54]															
	YAV4CL2TC516FX				5/16	1				--		2.52 [64]															
	YAV4CL2TC516FX45				[M8]	2		.55 [14]	1.00 [25]	.84 [21]	[8]	2.50 [64]	[9]		.09 [2]	.36 [9]											
	YAV4CL2TC516FX90					3				.94 [24]		1.99 [51]															
	YAV4CL2NTCFX				1/2	1				--		3.87 [98]															
	YAV4CL2NTCFX45				[M12]	2		.83 [21]	1.75 [44]	.88 [22]	[14]	3.91 [99]	[16]		.12 [3]	.65 [17]											
	YAV4CL2NTCFX90					3				1.04 [26]		3.32 [84]															
	YAV4CL2TC10FX				#10	1				--		1.95 [50]															
	YAV4CL2TC10FX45				[M5]	2		.55 [14]	.63 [16]	.84 [21]	[5]	1.94 [49]	[6]		.09 [2]	.26 [7]											
	YAV4CL2TC10FX90					3				.94 [24]		1.43 [36]															
	YAV4CL2NT14FX				1/4	1				--		2.08 [53]															
	YAV4CL2NT14FX45	#4 WELD 91/24 105/24	#4 AWG	40 & 50	[M6]	2	.50	.45 [11]	.63 [44]	.84 [21]	[7]	2.06 [52]	[8]	.38 [10]	.09 [2]	.32 [8]	8 OR 346	GRAY	W4CRT X4CRT W4CVT (1)	X4CRT W4CVT (1)	(2 CRIMP)	W4CRT X4CRT W4CVT (1)	U4CRT (1)	U4CRT (1)	U4CRT (1)	MECHANICAL: MY29-11 (1) HYDRAULIC: Y644M (1) BAT644M	9/16"
	YAV4CL2NT14FX90					3	[13]			.94 [24]		1.55 [39]															

SEE SHEET 1 OF 19 FOR NOTES

TO ORDER BURNDY® PRODUCTS CALL		HYLUG™	
UNITED STATES		ITEM NO: N/A	
1-800-346-4175 (LONDONDERRY, NH)		CAT. NO: YAV4CL-2-TC-FX- (TABLE)	
CANADA:		DRAWN BY: D.FILLION 12/04/82	
1-800-361-6975 (QUEBEC)		CHECKER: K.HENRY 12/10/82	
1-800-387-6487 (ALL OTHER PROVINCES)		DSN APPVL: C.PALAGI 12/14/82	
FOR PRODUCT INFO: <a href="http://www.burndy.com">http://www.burndy.com</a>		MFG APPVL: N/A --	
		QA APPVL: A.LLOYD 12/14/82	
		MKT APPVL: --	
		SCALE: NTS	
		PROJ #: --	
		DRAWING NO: SE208119	
		REV: M	
		SHEET 4 OF 19	

REV: PE0200





REV	DATE	DESCRIPTION	ECO	BY	CHK
M	05/21/2014 11:05:00 AM	CAT. # YAB3L2TC3BE10FX ADDED TO THE TABLE	36112	BSB	PB

D	CATALOG NO.	FIG. NO.	CONDUCTOR			BOLT SIZE	DIMENSIONS								INSTALLATION TOOLING (# OF CRIMPS)								WIRE STRIP LENGTH				
			FLEX	CODE (AWG)	NAVY 5		B	C	E	H	K	L	N	O.D.	T REF.	Z MIN.	DIE INDEX	COLOR CODE	MECHANICAL		HYDRAULIC				DIELESS (# CRIMPS)		
																			MD7-34R	OUR840	BCT500 Y500CT	Y35, Y39, Y750, BAT35, BAT750, PAT750		Y46 4		Y45 3	
	YAV25L2NT14FX	1	1/0 WELD 275/24	1/0 AWG	100	.69 [18]	.64 [16]		--		2.39 [61]			.56 [14]	.12 [3]	.34 [9]	12 OR 348	PINK	W25RT X25RT W25VT (2)	X25RT W25VT (2)	W25RT X25RT W25VT (2)	U25RT UR4204WE (1)	U25RT UR4204WE (1)	U25RT UR4204WE (1)		11/16"	
	YAV25L2TC14FX	1					.83 [21]		--		2.39 [61]																
	YAV25L2TC14FX45	2						.63 [16]		1.20 [31]	2.35 [60]																
	YAV25L2TC14FX90	3								1.31 [33]	1.66 [42]																
	YAV25L2TC14E2FX	1							--		2.51 [64]																
	YAV25L2TC14E2FX45	2				1/4		.75 [19]		1.20 [31]	2.47 [63]																
	YAV25L2TC14E2FX90	3								1.31 [33]	1.79 [45]																
	YAV25L2TC516E2FX	1							--		2.57 [65]																
	YAV25L2TC516E2FX45	2				5/16		.75 [19]		1.20 [31]	2.53 [64]																
	YAV25L2TC516E2FX90	3								1.31 [33]	1.85 [47]																
C	YAV25L2TC516E6FX	1							--		2.70 [69]																
	YAV25L2TC516E6FX45	2				5/16		.88 [22]		1.20 [31]	2.66 [68]																
	YAV25L2TC516E6FX90	3								1.31 [33]	1.98 [50]																
	YAV25L2TC516FX	1							--		2.82 [72]																
	YAV25L2TC516FX45	2				5/16		1.00 [25]		1.20 [31]	2.78 [71]																
	YAV25L2TC516FX90	3								1.31 [33]	2.10 [53]																
	YAV25L2TC38FX	1							--		2.95 [75]																
	YAV25L2TC38FX45	2				3/8		1.00 [25]		1.20 [31]	2.91 [74]																
	YAV25L2TC38FX90	3								1.31 [33]	2.23 [57]																
	YAV25L2NTCFX	1							--		4.14 [105]																
	YAV25L2NTCFX45	2				1/2		1.75 [44]		1.20 [31]	4.10 [104]																
	YAV25L2NTCFX90	3								1.31 [33]	3.41 [87]																
B	YAV25L2TC12E1FX	1							--		3.20 [81]																
	YAV25L2TC12E1FX45	2				1/2		1.00 [25]		1.20 [31]	3.16 [80]																
	YAV25L2TC12E1FX90	3								1.31 [33]	2.48 [63]																
	YAV25L2TC14E1FX	1							--		2.76 [70]																
	YAV25L2TC14E1FX45	2				1/4		1.00 [25]		1.20 [31]	2.72 [69]																
	YAV25L2TC14E1FX90	3								1.31 [33]	2.04 [52]																
	YAV25L2NT14E1FX	1							--		2.76 [70]																
	YAV25L2NT14E1FX45	2				1/4		.69 [18]		.64 [16]	1.00 [25]																
	YAV25L2NT14E1FX90	3	1/0 WELD 275/24	1/0 AWG	100					1.31 [33]	2.04 [52]																

MECHANICAL:  
MY29-11 (1)

HYDRAULIC:  
Y644M (1)  
BAT644M (1)  
PAT644M (1)

SEE SHEET 1 OF 19 FOR NOTES & VIEWS

TO ORDER BURNDY® PRODUCTS CALL		HYLUG™	
UNITED STATES 1-800-346-4175 (LONDONDERRY, NH)		ITEM NO: N/A	
CANADA: 1-800-361-6975 (QUEBEC) 1-800-387-6487 (ALL OTHER PROVINCES)		CAT. NO: YAV25L- 2--- (TABLE)	
FOR PRODUCT INFO: <a href="http://www.burndy.com">http://www.burndy.com</a>		DRAWN BY: D.FILLION 12/07/92	
		CHECKER: K.HENRY 12/10/92	
		DSN APPVL: C.PALAGI 12/14/92	
		MFG APPVL: N/A --	
		QA APPVL: A.LLOYD 12/14/92	
		MKT APPVL: -- --	
		SCALE: NTS	
		PROJ #: --	
		DRAWING NO: SE208119	
		REV: M	
		SHEET 7 OF 19	

REV: PEO200

D	CATALOG NO.	CONDUCTOR			BOLT SIZE	FIG. NO.	DIMENSIONS										INSTALLATION TOOLING (# OF CRIMPS)													
		FLEX	CODE (AWG)	NAVY			B	C	E	H	K	L	N	O.D.	T REF.	Z MIN.	DIE INDEX	COLOR CODE	MECHANICAL RATCHET		HYDRAULIC			DIELESS (# CRIMPS)	WIRE STRIP LENGTH					
																			MD7-34R MD6	OUR840	Y500CT PAT600	Y750, Y35 Y39 PAT750	Y46 PAT46			Y45				
	YAV26L2NT14FX	2/0 WELD 325/24	2/0 AWG	125	1/4	1	.81 [21]	.76 [19]	--		2.56 [65]		.63 [16]	.13 [3]		.34 [9]	13	BLACK	W26RT X26RT W26VT (2)	X26RT W26VT (2)	W26RT X26RT W26VT (2)	U26RT UR5184WE (1)	U26RT UR5184WE (1)	U26RT UR5184WE (1)		13/16"				
	YAV26L2TC14FX								1	.93 [24]	.63 [16]	--	.27 [7]	2.56 [65]	.31 [8]															
	YAV26L2TC14FX45								2			1.38 [35]		2.49 [63]																
	YAV26L2TC14FX90								3			1.49 [38]		1.70 [43]																
	YAV26L2TC14E1FX								1		1.00 [25]	--	.27 [7]	2.93 [74]	.31 [8]															
	YAV26L2TC14E2FX								1			--		2.68 [68]																
C	YAV26L2TC14E2FX45								2	.75 [19]		1.38 [35]	.27 [7]	2.61 [66]	.31 [8]															
	YAV26L2TC14E2FX90								3			1.49 [38]		1.83 [46]																
	YAV26L2TC516FX								1			--		2.99 [76]																
	YAV26L2TC516FX45								2	1.00 [25]		1.38 [35]	.33 [8]	2.93 [74]	.34 [9]															
	YAV26L2TC516FX90								3	.93 [24]		1.49 [38]		2.14 [54]																
	YAV26L2NT38FX								1			--		3.23 [82]																
	YAV26L2NT38FX45								2	.63 [16]	1.00 [25]	1.45 [37]	.41 [10]	3.13 [80]	.41 [10]															
	YAV26L2NT38FX90								3			1.70 [43]		2.26 [57]																
	YAV26L2TC38FX								1	.93 [24]	1.00 [25]	--	.41 [10]	3.12 [79]	.41 [10]															
	YAV26L2TC38FX45				2			1.38 [35]	.41 [10]	3.05 [77]																				
	YAV26L2TC38FX90				3			1.49 [38]		2.26 [58]																				
B	YAV26L2TC12E1FX				1			--		3.37 [86]																				
	YAV26L2TC12E1FX45				2	1.00 [25]		1.38 [35]	.53 [13]	3.30 [84]	.53 [13]																			
	YAV26L2TC12E1FX90				3			1.49 [38]		2.51 [64]																				
	YAV26L2NTCFX				1			--		4.31 [109]																				
	YAV26L2NTCFX45				2	1.75 [44]		1.38 [35]	.56 [14]	4.24 [108]	.63 [16]																			
	YAV26L2NTCFX90	2/0 WELD 325/24			3			1.49 [38]		3.45 [88]																				
	YAV26L2TC38E10FX	2/0 AWG		125	3/8	.81 [21]	.93 [24]		.41 [10]	3.37 [86]	.41 [10]	.63 [16]	.13 [3]		.42 [11]	13	BLACK	W26RT X26RT W26VT (2)	X26RT W26VT (2)	W26RT X26RT W26VT (2)	U26RT UR5184WE (1)	U26RT UR5184WE (1)	U26RT UR5184WE (1)		13/16"					

MECHANICAL:  
MY29-11 (1)

HYDRAULIC:  
Y644M (1)  
PAT644 (1)  
Y81KFT (1)  
PAT81KFT (1)  
Y4PC834 (1)  
PAT4PC834 (1)

SEE SHEET 1 OF 19 FOR NOTES

TO ORDER BURNDY® PRODUCTS CALL		HYLUG™	
UNITED STATES 1-800-346-4175 (LONDONDERRY, NH)		ITEM NO: N/A	CAT. NO: YAV26L-2-TC-FX
CANADA: 1-800-361-6975 (QUEBEC) 1-800-387-6487 (ALL OTHER PROVINCES)		DRAWN BY: D.FILLION 12/7/92	CHECKER: K.HENRY 12/10/92
FOR PRODUCT INFO: <a href="http://www.burndy.com">http://www.burndy.com</a>		DSN APPVL: C.PALAGI 12/14/92	MFG APPVL: N/A --
		QA APPVL: A.LLOYD 12/14/92	MKT APPVL: T.NELSON 12/14/92
		PROJ #:	SCALE: NTS
		SIZE: D	DRAWING NO: SE208119
		DOCUMENT TYPE: Sales	REV: M
		REL LEVEL: Released	SHEET 8 OF 19

REV: PE0200



D	CATALOG NO.	CONDUCTOR			BOLT SIZE	FIG. NO.	DIMENSIONS										INSTALLATION TOOLING (# OF CRIMPS)																
		FLEX	CODE (AWG)	NAVY			B	C	E	H	K	L	N	O.D.	T REF.	Z MIN.	DIE INDEX	COLOR CODE	MECHANICAL			HYDRAULIC			DIELESS (# CRIMPS)	WIRE STRIP LENGTH							
																			MD7-34R	OUR840	BCT500 Y500CT	Y35, Y39, Y750 BAT35, BAT750	Y46	Y45									
	YAV27L2TC14FX	3/0 WELD 450/24	3/0 AWG	150	1/4	1	1.00 [25]	1.03 [26]	.63 [16]	--	.27 [7]	2.79 [71]	.31 [8]	.70 [18]	.14 [4]	.34 [9]	14	ORANGE	W27RT (2)	X27RT (3)	W27RT (2)	U27RT (1)	U27RT (1)	U27RT (1)	MECHANICAL: MY29-11 (1)  HYDRAULIC: Y644M (1) BAT644M (1)	1"							
	YAV27L2TC14FX45					2																X27RT (3)	W27VT (2)	X27RT (3)									
	YAV27L2TC14FX90					3																W27VT (2)		W27VT (2)									
	YAV27L2TC14E2FX					1																											
	YAV27L2TC14E2FX45					2																											
	YAV27L2TC14E2FX90					3																											
	YAV27L2TC516FX					3/0 WELD 450/24	3/0 AWG	150	5/16	1																							
	YAV27L2TC516FX45									2																							
	YAV27L2TC516FX90									3																							
	YAV27L2TC38FX									1																							
	YAV27L2TC38FX45									2																							
	YAV27L2TC38FX90									3																							
	YAV27L2TC38E16FX									1																							
	YAV27L2TC38E16FX45									2																							
	YAV27L2TC38E16FX90									3																							
	YAV27L2NT14FX	3/0 WELD 450/24	3/0 AWG	150	1/4	1	1.00 [25]	1.03 [26]	.76 [19]	.63 [16]	--	.27 [7]	2.79 [71]	.31 [8]	.70 [18]	.14 [4]	.34 [9]	14	ORANGE	W27RT (2)	X27RT (3)	W27RT (2)	U27RT (1)	U27RT (1)	U27RT (1)	1"							
	YAV27L2NTCFX					1																											
	YAV27L2NTCFX45					2																											
	YAV27L2NTCFX90					3																											
	YAV27L2NTC516FX					1																											
	YAV27L2NTC516FX45					2																											
	YAV27L2NTC516FX90					3																											


SEE SHEET 1 OF 19 FOR NOTES

TO ORDER BURNDY® PRODUCTS CALL		HYLUG™	
UNITED STATES 1-800-346-4175 (LONDONDERRY, NH)		ITEM NO: N/A	CAT. NO: YAV27L-2-TC-FX (TABLE)
CANADA: 1-800-361-6975 (QUEBEC) 1-800-387-6487 (ALL OTHER PROVINCES)		DRAWN BY: D.FILLION 12/07/92	CHECKER: K.HENRY 12/10/92
FOR PRODUCT INFO: <a href="http://www.burndy.com">http://www.burndy.com</a>		DSN APPVL: C.PALAGI 12/14/92	MFG APPVL: N/A --
		QA APPVL: A.LLOYD 12/14/92	MKT APPVL: -- --
		PROJ #:	SCALE: NTS
		SIZE: D	DRAWING NO: SE208119
		DOCUMENT TYPE: Sales	REV: M
		REL LEVEL: Released	SHEET 9 OF 19

REV: PE0200

REV	DATE	DESCRIPTION	ECO	BY	C'H'K.
M	05/21/2014 11:05:00 AM	CAT. # YAV28L2TC38E10FX ADDED TO THE TABLE	36112	BSB	PB

D	CATALOG NO.	FIG. NO.	CONDUCTOR			BOLT SIZE	DIMENSIONS							INSTALLATION TOOLING (# CRIMPS)					WIRE STRIP LENGTH						
			FLEX	CODE (AWG)	NAVY 5		B	C	E	H	K	L	N	O.D.	T REF.	Z MIN.	DIE INDEX	COLOR CODE		MECHANICAL RATCHET		HYDRAULIC			DIELESS (# CRIMPS)
																				MD7-34R	OUR840	Y750, Y35 Y39	Y46 4	Y45 3	
	YAV28L2TC14FX	1	4/0 WELD 550/24	4/0 AWG	200	1/4	1.03 [26]	1.14 [29]	.63 [16]	-	.27 [7]	2.86 [73]	.31 [8]	.77 [20]	.15 [4]	.34 [9]	15	PURPLE	W28RT (2) X28RT (3) W28VT (2)	X28RT (3) W28VT (2)	U28RT UR4205WE (1)	U28RT UR4205WE (1)	U28RT UR4205WE (1)	MECHANICAL: MY29-11 (1) HYDRAULIC: Y644M (1)	1-1/16"
	YAV28L2TC14FX45	2				1/4			.63 [16]	.27 [7]	2.74 [70]	.31 [8]													
	YAV28L2TC14FX90	3				1/4			.63 [16]	.27 [7]	2.74 [70]	.31 [8]													
	YAV28L2TC14E2FX	1				1/4			.75 [19]	.27 [7]	2.87 [73]	.31 [8]													
	YAV28L2TC14E2FX45	2				1/4			.75 [19]	.27 [7]	2.87 [73]	.31 [8]													
	YAV28L2TC14E2FX90	3				1/4			.75 [19]	.27 [7]	2.87 [73]	.31 [8]													
	YAV28L2TC516FX	1				5/16			1.00 [25]	.33 [8]	3.18 [81]	.34 [9]													
	YAV28L2TC516FX45	2				5/16			1.00 [25]	.33 [8]	3.18 [81]	.34 [9]													
	YAV28L2TC516FX90	3				5/16			1.00 [25]	.33 [8]	3.18 [81]	.34 [9]													
C	YAV28L2TC38FX	1				3/8		1.14 [29]	1.00 [25]	.40 [10]	3.30 [84]	.41 [10]													
	YAV28L2TC38FX45	2				3/8		1.14 [29]	1.00 [25]	.40 [10]	3.30 [84]	.41 [10]													
	YAV28L2TC38FX90	3				3/8		1.14 [29]	1.00 [25]	.40 [10]	3.30 [84]	.41 [10]													
	YAV28L2NT38FX	1				3/8		.94 [24]	1.00 [25]	.40 [10]	3.30 [84]	.41 [10]													
	YAV28L2NT38FX45	2				3/8		.94 [24]	1.00 [25]	.40 [10]	3.30 [84]	.41 [10]													
	YAV28L2NT38FX90	3				3/8		.94 [24]	1.00 [25]	.40 [10]	3.30 [84]	.41 [10]													
	YAV28L2NTC38FX	1				3/8		1.14 [29]	1.75 [44]	.40 [10]	4.05 [103]	.41 [10]													
	YAV28L2NTC38FX45	2				3/8		1.14 [29]	1.75 [44]	.40 [10]	4.05 [103]	.41 [10]													
	YAV28L2NTC38FX90	3				3/8		1.14 [29]	1.75 [44]	.40 [10]	4.05 [103]	.41 [10]													
	YAV28L2TC12E1FX	1				1/2			1.00 [25]	.53 [13]	3.55 [90]	.53 [13]													
	YAV28L2TC12E1FX45	2				1/2			1.00 [25]	.53 [13]	3.55 [90]	.53 [13]													
	YAV28L2TC12E1FX90	3				1/2			1.00 [25]	.53 [13]	3.55 [90]	.53 [13]													
	YAV28L2TC12FX	1				1/2			1.25 [32]	.53 [13]	3.80 [97]	.53 [13]													
	YAV28L2TC12FX45	2				1/2			1.25 [32]	.53 [13]	3.80 [97]	.53 [13]													
	YAV28L2TC12FX90	3				1/2			1.25 [32]	.53 [13]	3.80 [97]	.53 [13]													
	YAV28L2NTCFX	1				1/2		1.14 [29]	1.75 [44]	.56 [14]	4.49 [114]	.63 [16]													
	YAV28L2NTCFX45	2				1/2		1.14 [29]	1.75 [44]	.56 [14]	4.49 [114]	.63 [16]													
	YAV28L2NTCFX90	3				1/2		1.14 [29]	1.75 [44]	.56 [14]	4.49 [114]	.63 [16]													
	YAV28L2ENTI4FX	1	4/0 WELD 550/24	4/0 AWG	200	1/4	1.03 [26]	.76 [19]	.63 [16]	.27 [7]	2.74 [70]	.31 [8]	.77 [20]	.15 [4]	.34 [9]	15	PURPLE	W28RT (2) X28RT (3) W28VT (2)	X28RT (3) W28VT (2)	U28RT UR4205WE (1)	U28RT UR4205WE (1)	U28RT UR4205WE (1)	MECHANICAL: MY29-11 (1) HYDRAULIC: Y644M (1)	1-1/16"	
	YAV28L2ENTI4FX45	2				1/4		.76 [19]	.63 [16]	.27 [7]	2.74 [70]	.31 [8]	.77 [20]	.15 [4]	.34 [9]										
	YAV28L2ENTI4FX90	3				1/4		.76 [19]	.63 [16]	.27 [7]	2.74 [70]	.31 [8]	.77 [20]	.15 [4]	.34 [9]										

REV: PE0200	SEE SHEET 1 OF 19 FOR NOTES		TO ORDER BURNDY® PRODUCTS CALL UNITED STATES 1-800-346-4175 (LONDONDERRY, NH) CANADA: 1-800-361-6975 (QUEBEC) 1-800-387-6487 (ALL OTHER PROVINCES) FOR PRODUCT INFO: <a href="http://www.burndy.com">http://www.burndy.com</a>		HYLUG™ ITEM NO: N/A CAT. NO: YAV28L-2-TC-FX DRAWN BY: D.FILLION 12/07/92 CHECKER: K.HENRY 12/10/92 DSN APPVL: C.PALAGI 12/14/92 MFG APPVL: N/A -- QA APPVL: A.LLOYD 12/14/92 MKT APPVL: -- -- PROD FAM: -- -- PROJECT #: -- -- DOCUMENT TYPE: Sales REL LEVEL: Released	
						
					SCALE: NTS	
					DRAWING NO: SE208119 SHEET 10 OF 19	
					REV: M	
					SIZE: D	
					PROJECT #: --	
					REL LEVEL: Released	
					MFG APPVL: N/A	
					QA APPVL: A.LLOYD	

DRAWING NO.  
SE208119

7 6 5 4 3 2 1

REV	DATE	DESCRIPTION	ECO	BY	C'H'K.
M	05/21/2014 11:05:00 AM	CAT. # YA30L2TC38E10FX ADDED TO THE TABLE	36112	BSB	PB

D

D

C

C

B

B

A

A

CATALOG NO.	FIG. NO.	CONDUCTOR			BOLT SIZE	DIMENSIONS										BURNDY® INSTALLATION TOOLING (# CRIMPS)								
		FLEX	CODE (AWG)	NAVY		B	C	E	H	K	L	N	O.D.	T REF.	Z MIN.	DIE INDEX	COLOR CODE	MECHANICAL		HYDRAULIC			DIELESS (# CRIMPS)	WIRE STRIP LENGTH
																		MD7-34R	Y500CT PAT600	Y750, Y35 Y39, PAT750	Y46	Y45		
YA30L2TC516FX	1	250 FLEX CLASS G: 259 STR CLASS H: 427 STR	--	--	5/16	1.03 [26]	1.20 [30]	1.00 [25]	--	.33 [8]	3.32 [84]	.34 [9]	.81 [21]	.16 [4]	.35 [9]	16	YELLOW	W29VT (2)	W29VT (1)	U29RT (1)	U29RT (1)	U29RT (1)	HYDRAULIC: Y644M (1) BAT644M (1) PAT644M (1) Y81KFT (1) PAT81KFT (1)	1-1/16"
YA30L2TC516FX45	2					1.75 [44]			3.23 [82]															
YA30L2TC516FX90	3					1.89 [48]			2.25 [57]															
YA30L2NT38FX	1	4/0 FLEX CLASS I, 532 STR CLASS K, 2107 STR CLASS M, 5320 STR DLO, 550/24	--	--	3/8	.960 [24]	1.20 [30]	1.00 [25]	--	.41 [10]	3.45 [88]	.41 [10]	.81 [21]	.16 [4]	.35 [9]	16	YELLOW	W29VT (2)	W29VT (1)	U29RT (1)	U29RT (1)	U29RT (1)	HYDRAULIC: Y644M (1) BAT644M (1) PAT644M (1) Y81KFT (1) PAT81KFT (1)	1-1/16"
YA30L2TC38FX	1					1.75 [44]			3.45 [88]															
YA30L2TC38FX45	2					1.89 [48]			2.37 [60]															
YA30L2TC38FX90	3	250 FLEX CLASS G: 259 STR CLASS H: 427 STR	--	--	3/8	1.06 [27]	1.20 [30]	1.00 [25]	--	.41 [10]	3.51 [89]	.41 [10]	.81 [21]	.16 [4]	.35 [9]	16	YELLOW	W29VT (2)	W29VT (1)	U29RT (1)	U29RT (1)	U29RT (1)	HYDRAULIC: Y644M (1) BAT644M (1) PAT644M (1) Y81KFT (1) PAT81KFT (1)	1-1/16"
YA30L2TC38E5FX	1								1.75 [44]		3.42 [87]													
YA30L2TC38E5FX45	2								1.89 [48]		2.43 [62]													
YA30L2TC38E5FX90	3	4/0 FLEX CLASS I, 532 STR CLASS K, 2107 STR CLASS M, 5320 STR DLO, 550/24	--	--	1/2	1.25 [32]	1.20 [30]	1.00 [25]	--	.53 [13]	3.95 [100]	.53 [13]	.81 [21]	.16 [4]	.35 [9]	16	YELLOW	W29VT (2)	W29VT (1)	U29RT (1)	U29RT (1)	U29RT (1)	HYDRAULIC: Y644M (1) BAT644M (1) PAT644M (1) Y81KFT (1) PAT81KFT (1)	1-1/16"
YA30L2TC12FX	1								1.75 [44]		3.86 [98]													
YA30L2TC12FX45	2								1.89 [48]		2.87 [73]													
YA30L2TC12FX90	3	250 FLEX CLASS G: 259 STR CLASS H: 427 STR	--	--	1/2	1.75 [44]	1.20 [30]	1.00 [25]	--	.56 [14]	4.63 [118]	.63 [16]	.81 [21]	.16 [4]	.35 [9]	16	YELLOW	W29VT (2)	W29VT (1)	U29RT (1)	U29RT (1)	U29RT (1)	HYDRAULIC: Y644M (1) BAT644M (1) PAT644M (1) Y81KFT (1) PAT81KFT (1)	1-1/16"
YA30L2NFCFX	1								1.75 [44]		4.55 [116]													
YA30L2NFCFX45	2								1.89 [48]		3.56 [90]													
YA30L2NFCFX90	3	4/0 FLEX CLASS I, 532 STR CLASS K, 2107 STR CLASS M, 5320 STR DLO, 550/24	--	--	1/2	1.03 [26]	1.20 [30]	1.00 [25]	--	.56 [14]	4.63 [118]	.63 [16]	.81 [21]	.16 [4]	.35 [9]	16	YELLOW	W29VT (2)	W29VT (1)	U29RT (1)	U29RT (1)	U29RT (1)	HYDRAULIC: Y644M (1) BAT644M (1) PAT644M (1) Y81KFT (1) PAT81KFT (1)	1-1/16"
YA30L2NFCFX	1								1.75 [44]		4.55 [116]													
YA30L2NFCFX45	2								1.89 [48]		3.56 [90]													
YA30L2NFCFX90	3	250 FLEX CLASS G: 259 STR CLASS H: 427 STR	--	--	1/2	1.03 [26]	1.20 [30]	1.00 [25]	--	.56 [14]	4.63 [118]	.63 [16]	.81 [21]	.16 [4]	.35 [9]	16	YELLOW	W29VT (2)	W29VT (1)	U29RT (1)	U29RT (1)	U29RT (1)	HYDRAULIC: Y644M (1) BAT644M (1) PAT644M (1) Y81KFT (1) PAT81KFT (1)	1-1/16"
YA30L2NFCFX	1								1.75 [44]		4.55 [116]													
YA30L2NFCFX45	2								1.89 [48]		3.56 [90]													
YA30L2NFCFX90	3	4/0 FLEX CLASS I, 532 STR CLASS K, 2107 STR CLASS M, 5320 STR DLO, 550/24	--	--	1/2	1.03 [26]	1.20 [30]	1.00 [25]	--	.56 [14]	4.63 [118]	.63 [16]	.81 [21]	.16 [4]	.35 [9]	16	YELLOW	W29VT (2)	W29VT (1)	U29RT (1)	U29RT (1)	U29RT (1)	HYDRAULIC: Y644M (1) BAT644M (1) PAT644M (1) Y81KFT (1) PAT81KFT (1)	1-1/16"
YA30L2NFCFX	1								1.75 [44]		4.55 [116]													
YA30L2NFCFX45	2								1.89 [48]		3.56 [90]													
YA30L2NFCFX90	3	250 FLEX CLASS G: 259 STR CLASS H: 427 STR	--	--	1/2	1.03 [26]	1.20 [30]	1.00 [25]	--	.56 [14]	4.63 [118]	.63 [16]	.81 [21]	.16 [4]	.35 [9]	16	YELLOW	W29VT (2)	W29VT (1)	U29RT (1)	U29RT (1)	U29RT (1)	HYDRAULIC: Y644M (1) BAT644M (1) PAT644M (1) Y81KFT (1) PAT81KFT (1)	1-1/16"
YA30L2NFCFX	1								1.75 [44]		4.55 [116]													
YA30L2NFCFX45	2								1.89 [48]		3.56 [90]													
YA30L2NFCFX90	3	4/0 FLEX CLASS I, 532 STR CLASS K, 2107 STR CLASS M, 5320 STR DLO, 550/24	--	--	1/2	1.03 [26]	1.20 [30]	1.00 [25]	--	.56 [14]	4.63 [118]	.63 [16]	.81 [21]	.16 [4]	.35 [9]	16	YELLOW	W29VT (2)	W29VT (1)	U29RT (1)	U29RT (1)	U29RT (1)	HYDRAULIC: Y644M (1) BAT644M (1) PAT644M (1) Y81KFT (1) PAT81KFT (1)	1-1/16"
YA30L2NFCFX	1								1.75 [44]		4.55 [116]													
YA30L2NFCFX45	2								1.89 [48]		3.56 [90]													

SEE SHEET 1 OF 19 FOR NOTES

TO ORDER BURNDY® PRODUCTS CALL		HYLUG™	
UNITED STATES 1-800-346-4175 (LONDONDERRY, NH)		ITEM NO: N/A	CAT. NO: YA30L-2TC-FX (TABLE)
CANADA: 1-800-361-6975 (QUEBEC) 1-800-387-6487 (ALL OTHER PROVINCES)		DRAWN BY: D.FILLION 12/07/82	CHECKER: K.HENRY 12/10/82
FOR PRODUCT INFO: <a href="http://www.burndy.com">http://www.burndy.com</a>		DSN APPVL: C.PALAGI 12/14/82	MFG APPVL: N/A --
		QA APPVL: A.LLOYD 12/14/82	MKT APPVL: T.NELSON 12/14/82
		PROJ #: --	SCALE: NTS
		PROJECT #: --	SIZE: D
		DOCUMENT TYPE: Sales	DRAWING NO: SE208119
		REL LEVEL: Released	REV: M
			SHEET 11 OF 19

REV: PE0200

8 7 6 5 4 3 2 1

DRAWING NO.  
SE208119

REV	DATE	DESCRIPTION	ECO	BY	CHK
M	05/21/2014 11:05:00 AM	CAT. # YA3BL2TC38E10FX ADDED TO THE TABLE	36112	BSB	PB

D	CATALOG NO.	FIG. NO.	CONDUCTOR			BOLT SIZE	DIMENSIONS										INSTALLATION TOOLING (# CRIMPS)										
			FLEX	CODE (AWG)	NAVY $\triangle 5$		B	C	E	H	K	L	N	O.D.	T REF.	Z MIN.	DIE INDEX	COLOR CODE	MECHANICAL		HYDRAULIC			DIELESS (# CRIMPS)	WIRE STRIP LENGTH		
																			MD7-34R	BCT500 Y500CT	Y35, Y39 Y750 BAT750, PAT750	Y46 $\triangle 4$	Y45 $\triangle 3$				
	YA31L2NT38FX	1	250 FLEX 637/24 CLASS, I, K, M	--	--	3/8 [M10]	1.06 [27]	.96 [24]	1.00 [25]	--	.41 [10]	3.51 [89]	.88 [22]	.18 [4]	.43 [11]	17 OR 298	WHITE	W30VT (2)	W30VT (2)	U30RT (2)	U30RT (2)	U30RT (2)	HYDRAULIC: Y644M (1) BAT644M (1)	1-1/8"			
	YA31L2NT38FX45	2					1.29 [33]		1.00 [25]	1.85 [47]		3.43 [87]													2.41 [52]	3.43 [87]	.41 [10]
	YA31L2NT38FX90	3					1.98 [50]		2.41 [52]	3.51 [89]		2.41 [52]													3.43 [87]	.41 [10]	
	YA31L2TC38FX	1					1.29 [33]		1.00 [25]	1.85 [47]		3.43 [87]													2.41 [52]	3.51 [89]	.41 [10]
	YA31L2TC38FX45	2					1.98 [50]		2.41 [52]	3.51 [89]		2.41 [52]													3.43 [87]	.41 [10]	
	YA31L2TC38FX90	3					1.98 [50]		2.41 [52]	3.51 [89]		2.41 [52]													3.43 [87]	.41 [10]	
	YA31L2NT38E16FX	1					1.29 [33]		1.75 [44]	1.85 [47]		4.18 [106]													3.16 [80]	4.26 [108]	.41 [10]
	YA31L2NT38E16FX45	2					1.98 [50]		1.75 [44]	1.85 [47]		4.18 [106]													3.16 [80]	4.26 [108]	.41 [10]
	YA31L2NT38E16FX90	3					1.98 [50]		1.75 [44]	1.85 [47]		4.18 [106]													3.16 [80]	4.26 [108]	.41 [10]
	YA31L2NTC38FX	1					1.29 [33]		1.75 [44]	1.85 [47]		4.18 [106]													3.16 [80]	4.26 [108]	.41 [10]
	YA31L2NTC38FX45	2					1.98 [50]		1.75 [44]	1.85 [47]		4.18 [106]													3.16 [80]	4.26 [108]	.41 [10]
	YA31L2NTC38FX90	3					1.98 [50]		1.75 [44]	1.85 [47]		4.18 [106]													3.16 [80]	4.26 [108]	.41 [10]
	YA31L2TC12FX	1					1.25 [32]		1.25 [32]	1.85 [47]		3.93 [100]													2.91 [74]	4.01 [102]	.53 [13]
	YA31L2TC12FX45	2					1.98 [50]		1.25 [32]	1.85 [47]		3.93 [100]													2.91 [74]	4.01 [102]	.53 [13]
	YA31L2TC12FX90	3					1.98 [50]		1.25 [32]	1.85 [47]		3.93 [100]													2.91 [74]	4.01 [102]	.53 [13]
	YA31L2NTCFX	1					1.75 [44]		1.75 [44]	1.85 [47]		4.62 [112]													3.60 [91]	4.70 [119]	.63 [16]
	YA31L2NTCFX45	2					1.98 [50]		1.75 [44]	1.85 [47]		4.62 [112]													3.60 [91]	4.70 [119]	.63 [16]
	YA31L2NTCFX90	3					1.98 [50]		1.75 [44]	1.85 [47]		4.62 [112]													3.60 [91]	4.70 [119]	.63 [16]

SEE SHEET 1 OF 19 FOR NOTES

TO ORDER BURNDY® PRODUCTS CALL		HYLUG™	
UNITED STATES 1-800-346-4175 (LONDONDERRY, NH)		ITEM NO: N/A	CAT. NO: YA31L-2-FX- (TABLE)
CANADA: 1-800-361-6975 (QUEBEC) 1-800-387-6487 (ALL OTHER PROVINCES)		DRAWN BY: D.FILLION 12/07/92	CHECKER: K.HENRY 12/10/92
FOR PRODUCT INFO: <a href="http://www.burndy.com">http://www.burndy.com</a>		DSN APPVL: C.PALAGI 12/14/92	MFG APPVL: N/A --
		QA APPVL: A.LLOYD 12/14/92	MKT APPVL: T.NELSON 12/14/92
		PROJ #:	SCALE: NTS
		SIZE: D	DRAWING NO: SE208119
		DOCUMENT TYPE: Sales	REV: M
		REL LEVEL: Released	SHEET 12 OF 19

REV: PE0200

DRAWING NO.  
SE208119

7

6

5

4

3

2

1

REV	DATE	DESCRIPTION	ECO	BY	CHECK
M	05/21/2014 11:05:00 AM	CAT. # YA32L2TC38E10FX ADDED TO THE TABLE	36112	BSB	PB

D

D

C

C

B

B

A

A

REV: PE0200

CATALOG NO.	FIG. NO.	CONDUCTOR			BOLT SIZE	DIMENSIONS										BURNDY INSTALLATION TOOLING (# CRIMPS)							
		FLEX	CODE (AWG)	NAVY $\triangle$ 5		B	C	E	H	K	L	N	O.D.	T REF.	Z MIN.	DIE INDEX	COLOR CODE	MECHANICAL RATCHET	HYDRAULIC			DIELESS (# CRIMPS)	WIRE STRIP LENGTH
																		MD7-34R	Y750 Y35 Y39	Y46 $\triangle$ 4	Y45 $\triangle$ 3		
YA32L2NTCFX	1	313.1 kcmil 775/24 (300 kcmil FLEX)	--	--	1/2	1.19 [30]	1.40 [36]	1.75 [44]	--	.56 [14]	4.88 [124]	.63 [16]	.95 [24]	.19 [5]	.65 [17]	18 OR 324	RED	W31VT (2)	U31RT (2)	U31RT (2)	U31RT (2)	HYDRAULIC: Y644M (1)	1-1/4"
YA32L2NTCFX45	2								2.03 [52]		4.78 [121]												
YA32L2NTCFX90	3								2.19 [56]		3.64 [93]												
YA32L2TC38FX	1	313.1 kcmil 775/24 (300 kcmil FLEX)	--	--	3/8	1.19 [30]	1.40 [36]	1.00 [25]	--	.40 [10]	3.69 [94]	.41 [10]	.95 [24]	.19 [5]	.65 [17]	18 OR 324	RED	W31VT (2)	U31RT (2)	U31RT (2)	U31RT (2)	HYDRAULIC: Y644M (1)	1-1/4"
YA32L2TC38FX45	2								2.03 [52]		3.59 [91]												
YA32L2TC38FX90	3								2.19 [56]		2.45 [62]												

SEE SHEET 1 OF 19 FOR NOTES

TO ORDER BURNDY® PRODUCTS CALL UNITED STATES 1-800-346-4175 (LONDONDERRY, NH) CANADA: 1-800-361-6975 (QUEBEC) 1-800-387-6487 (ALL OTHER PROVINCES) FOR PRODUCT INFO: <a href="http://www.burndy.com">http://www.burndy.com</a>		HYLUG™ ITEM NO: N/A CAT. NO: YA32L-2NTC-FX- (TABLE) DRAWN BY: D.FILLION 12/07/92 CHECKER: K.HENRY 12/10/92 DSN APPVL: C.PALAGI 12/14/92 MFG APPVL: N/A -- QA APPVL: A.LLOYD 12/14/92 MKT APPVL: T.NELSON 12/14/92 PROD FAM: -- PROJECT #: -- DOCUMENT TYPE: Sales REL LEVEL: Released	
SCALE: NTS DRAWING NO: SE208119 SHEET 13 OF 19		REV: M	

8

7

6

5

4

3

2

1

DRAWING NO.  
SE208119

7

6

5

4

3

2

1

REV	DATE	DESCRIPTION	ECO	BY	C'H'K.
M	05/21/2014 11:05:00 AM	CAT. # YA34L2TC38E10FX ADDED TO THE TABLE	36112	BSB	PB

D	CATALOG NO.	FIG. NO.	CONDUCTOR			BOLT SIZE	DIMENSIONS									INSTALLATION TOOLING (# CRIMPS)														
			FLEX	CODE (AWG)	NAVY 5		B	C	E	H	K	L	N	O.D.	T. REF.	Z. MIN.	DIE INDEX	COLOR CODE	MECHANICAL	HYDRAULIC			DIELESS (# CRIMPS)	WIRE STRIP LENGTH						
																			MD7-34R	BCT500 Y500CT PAT600	Y750, Y35 Y39, BAT35 BAT750, PAT750	Y46 PAT46 4			Y45 3					
	YA34L2TC14FX	1	373.7 kcmil 925/24 (350 kcmil FLEX)	--	--	1/4 [M6]	1.27 [32]	.96 [24]	.62 [16]	--	.27 [7]	3.31 [84]	.31 [8]	1.06 [27]	.23 [6]	.32 [8]	19 OR 470	BLUE	W32VT (2)	W32VT (2) W32RT (2)	U32RT (2)	U32RT (2)	U32RT (2)	HYDRAULIC: Y644M (1) BAT644M (1) Y81KFT (2) PAT81KFT (2)	1-5/16"					
	YA34L2TC14FX45	2																												
	YA34L2TC14FX90	3																												
	YA34L2TC516FX	1								5/16 [M8]																				
	YA34L2TC516FX45	2																												
	YA34L2TC516FX90	3																												
	YA34L2NT38FX	1								3/8 [M10]																				
	YA34L2NT38FX45	2																												
	YA34L2NT38FX90	3																												
	YA34L2TC38FX	1								3/8 [M10]																				
	YA34L2TC38FX45	2																												
	YA34L2TC38FX90	3																												
	YA34L2NTC38FX	1								3/8 [M10]																				
	YA34L2NTC38FX45	2																												
	YA34L2NTC38FX90	3																												
	YA34L2TC12FX	1								1/2 [M12]																				
	YA34L2TC12FX45	2																												
	YA34L2TC12FX90	3																												
	YA34L2NTCFX	1				1/2 [M12]																								
	YA34L2NTCFX45	2	373.7 kcmil 925/24 (350 kcmil FLEX)				1.27 [32]	1.55 [39]	1.75 [44]	--	.56 [14]	5.00 [127]	.63 [16]	1.06 [27]	.23 [6]	.64 [16]	19 OR 470	BLUE	W32VT (2)	W32VT (2) W32RT (2)	U32RT (2)	U32RT (2)	U32RT (2)		1-5/16"					
	YA34L2NTCFX90	3																												

SEE SHEET 1 OF 19 FOR NOTES

TO ORDER BURNDY® PRODUCTS CALL		HYLUG™	
UNITED STATES 1-800-346-4175 (LONDONDERRY, NH)		ITEM NO: N/A	
CANADA: 1-800-361-6975 (QUEBEC) 1-800-387-6487 (ALL OTHER PROVINCES)		CAT. NO: YA34L-2-TC-FX- (SEE TABLE)	
FOR PRODUCT INFO: <a href="http://www.burndy.com">http://www.burndy.com</a>		DRAWN BY: D.FILLION 12/07/92	
		CHECKER: K.HENRY 12/10/92	
		DSN APPVL: C.PALAGI 12/14/92	
		MFG APPVL: N/A --	
		QA APPVL: A.LLOYD 12/14/92	
		MKT APPVL: T.NELSON 12/14/92	
		SCALE: NTS	
		PROJ. #:	
		DRAWING NO: SE208119	
		REV: M	
		SHEET 14 OF 19	

REV: PE0200

8

7

6

5

4

3

2

1

DRAWING NO.  
SE208119

7 6 5 4 3 2 1

REV	DATE	DESCRIPTION	ECO	BY	CHK
M	05/21/2014 11:05:00 AM	CAT. # YA36L2TC38E10FX ADDED TO THE TABLE	36112	BSB	PB

D

D

C

C

B

B

A

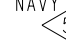
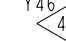
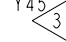
A

REV: PE0200

SEE SHEET 1 OF 19 FOR NOTES

TO ORDER BURNDY® PRODUCTS CALL		HYLUG™	
UNITED STATES 1-800-346-4175 (LONDONDERRY, NH)		ITEM NO: N/A	
CANADA: 1-800-361-6975 (QUEBEC) 1-800-387-6487 (ALL OTHER PROVINCES)		CAT. NO: YA36L-2TC-FX- (SEE TABLE)	
FOR PRODUCT INFO: <a href="http://www.burndy.com">http://www.burndy.com</a>		DRAWN BY: D.FILLION 12/07/92	
		CHECKER: K.HENRY 12/10/92	
		DSN APPVL: C.PALAGI 12/14/92	
		MFG APPVL: N/A --	
		QA APPVL: A.LLOYD 12/14/92	
		MKT APPVL: T.NELSON 12/14/92	
		SCALE: NTS	
		PROJ #:	
		SIZE	
		DRAWING NO	
		REV	
		SE208119	
		M	
		SHEET 15 OF 19	

8 7 6 5 4 3 2 1

CATALOG NO.	FIG. NO.	CONDUCTOR			BOLT SIZE	DIMENSIONS										BURNDY INSTALLATION TOOLING (# CRIMPS)								
		FLEX	CODE (AWG)	NAVY 		B	C	E	H	K	L	N	O.D.	T REF.	Z MIN.	DIE INDEX	COLOR CODE	HYDRAULIC			DIELESS (# CRIMPS)	WIRE STRIP LENGTH		
																		Y750 Y35 Y39	Y46 	Y45 				
YA36L2TC38FX	1	444.4 kcmil 1100/24 (450 kcmil FLEX)	--	--	3/8	1.38 [35]	1.74 [44]	1.00 [25]	--	.40 [10]	4.24 [108]	.50 [13]	1.19 [31]	.27 [7]	.53 [13]	20 OR 299	BROWN	U34RT (2)	U34RT (2)	U34RT (2)	HYDRAULIC: Y644M (1)	1-3/8"		
YA36L2TC38FX45	2								2.48 [63]		4.21 [107]							20 OR 299	BROWN	U34RT (2)			U34RT (2)	U34RT (2)
YA36L2TC38FX90	3								2.68 [68]		2.81 [71]													
YA36L2NTCFX	1	444.4 kcmil 1100/24 (450 kcmil FLEX)	--	--	1/2	1.38 [35]	1.74 [44]	1.75 [44]	--	.56 [14]	5.24 [133]	.63 [16]	1.19 [31]	.27 [7]	.65 [17]	20 OR 299	BROWN	U34RT (2)	U34RT (2)	U34RT (2)	HYDRAULIC: Y644M (1)	1-3/8"		
YA36L2NTCFX45	2								2.48 [63]		5.21 [132]							20 OR 299	BROWN	U34RT (2)			U34RT (2)	U34RT (2)
YA36L2NTCFX90	3								2.68 [68]		3.81 [97]													
YA36L2TC78E188FX	1	444.4 kcmil 1100/24 (450 kcmil FLEX)	--	--	7/8	1.38 [35]	1.74 [44]	1.88 [48]	.94 [24]	5.86 [149]	.88 [23]	1.19 [31]	.27 [7]	.89 [23]	20 OR 299	BROWN	U34RT (2)	U34RT (2)	U34RT (2)	HYDRAULIC: Y644M (1)	1-3/8"			

D	CATALOG NO.	FIG. NO.	CONDUCTOR			BOLT SIZE	DIMENSIONS									BURNDY INSTALLATION TOOLING (# CRIMPS)																																				
			FLEX	CODE (AWG)	NAVY 5		B	C	E	H	K	L	N	O.D.	T REF.	Z MIN.	DIE INDEX	COLOR CODE	HYDRAULIC			DIELESS (# CRIMPS)	WIRE STRIP LENGTH																													
																			Y750 Y35 Y39	Y46 PAT46 4	Y45 3																															
	YA38L2TC516FX	1	535.3 kcmil 1325/24 (500 kcmil FLEX)	--	--	5/16 [M8]	1.45 [37]	1.84 [47]	1.00 [25]	--	.33 [8]	4.04 [103]	1.25 [32]	.27 [7]	.36 [9]	L99	PINK	U38XRT UR4140WE (2)	U38XRT UR4140WE (2)	U38XRT UR4140WE (2)	HYDRAULIC: Y644- SERIES (1) PAT644- SERIES (1) Y81KFT- SERIES (1) PAT81KFT- SERIES (1) Y4PC834- SERIES (1) PAT4PC834- SERIES (1)	1-7/16"																														
	YA38L2TC516FX45	2																																																		
	YA38L2TC516FX90	3																																																		
	YA38L2NT38FX	1								3/8 [M10]	1.63 [41]	1.00 [25]						--	.40 [10]	4.35 [111]			.50 [13]	.53 [13]	L99	PINK	U38XRT UR4140WE (2)	U38XRT UR4140WE (2)	U38XRT UR4140WE (2)																							
	YA38L2NT38FX45	2																																																		
	YA38L2NT38FX90	3																																																		
	YA38L2NT38FXG2	1								3/8 [M10]	1.35 [34]	1.00 [25]						--	.40 [10]	4.26 [108]			.50 [13]	.53 [13]	L99	PINK	U38XRT UR4140WE (2)	U38XRT UR4140WE (2)	U38XRT UR4140WE (2)																							
	YA38L2TC38FX	1																																																		
	YA38L2TC38E10FX	1																																																		
	YA38L2TC38FX45	2								3/8 [M10]	1.84 [47]	1.00 [25]						--	.40 [10]	4.60 [117]			.50 [13]	.53 [13]	L99	PINK	U38XRT UR4140WE (2)	U38XRT UR4140WE (2)	U38XRT UR4140WE (2)																							
	YA38L2TC38FX90	3																																																		
	YA38L2TC12FX	1																																																		
	YA38L2TC12FX45	2								1/2 [M12]	1.25 [32]	2.60 [66]						.53 [13]	4.61 [117]	.53 [13]			.56 [14]	L99	PINK	U38XRT UR4140WE (2)	U38XRT UR4140WE (2)	U38XRT UR4140WE (2)																								
	YA38L2TC12FX90	3																																																		
	YA38L2NTCFX	1																																																		
	YA38L2NTCFX45	2								1/2 [M12]	1.84 [47]	1.75 [44]						2.60 [66]	.56 [14]	5.30 [134]			.63 [16]	.65 [17]	L99	PINK	U38XRT UR4140WE (2)	U38XRT UR4140WE (2)	U38XRT UR4140WE (2)																							
	YA38L2NTCFX90	3																																																		
	YA38L2NNTFX	1																																																		
	YA38L2NNTFX45	2	535.3 kcmil 1325/24 (500 kcmil FLEX)	--	--	1/2 [M12]	1.45 [37]	1.63 [41]	1.75 [44]	2.60 [66]	.56 [14]	5.30 [134]	.63 [16]	.65 [17]	L99	PINK	U38XRT UR4140WE (2)	U38XRT UR4140WE (2)	U38XRT UR4140WE (2)																																	
	YA38L2NNTFX90	3																																																		

SEE SHEET 1 OF 19 FOR NOTES

TO ORDER BURNDY® PRODUCTS CALL UNITED STATES 1-800-346-4175 (LONDONDERRY, NH) CANADA: 1-800-361-6975 (QUEBEC) 1-800-387-6487 (ALL OTHER PROVINCES) FOR PRODUCT INFO: <a href="http://www.burndy.com">http://www.burndy.com</a>		HYLUG™ ITEM NO: N/A CAT. NO: YA38L-2TC-FX- (SEE TABLE) DRAWN BY: D.FILLION 12/08/92 CHECKER: K.HENRY 12/10/92 DSN APPVL: C.PALAGI 12/14/92 MFG APPVL: N/A -- QA APPVL: A.LLOYD 12/14/92 MKT APPVL: T.NELSON 12/14/92 PROD FAM: -- PROJECT #: -- DOCUMENT TYPE: Sales REL LEVEL: Released	
SCALE: NTS DRAWING NO: SE208119 SHEET 16 OF 19		REV: M	

REV: PE0200





DRAWING NO.  
SE208119

7

6

5

4

3

2

1

REV	DATE	DESCRIPTION	ECO	BY	C'H'K.
M	05/21/2014 11:05:00 AM	CAT. # YA40L2TC38FX ADDED TO THE TABLE	36112	BSB	PB

D

D

C

C

B

B

A

A

REV: PE0200

SEE SHEET 1 OF 19 FOR NOTES

TO ORDER BURNDY® PRODUCTS CALL UNITED STATES 1-800-346-4175 (LONDONDERRY, NH) CANADA: 1-800-361-6975 (QUEBEC) 1-800-387-6487 (ALL OTHER PROVINCES) FOR PRODUCT INFO: <a href="http://www.burndy.com">http://www.burndy.com</a>		HYLUG™ ITEM NO: N/A CAT. NO: YA40L-2-T-FX- (SEE TABLE) DRAWN BY: D.FILLION 12/08/92 CHECKER: K.HENRY 12/10/92 DSN APPVL: C.PALAGI 12/14/92 MFG APPVL: N/A -- QA APPVL: A.LLOYD 12/14/92 MKT APPVL: T.NELSON 12/14/92 PROD FAM: -- PROJECT #: -- DOCUMENT TYPE: Sales REL LEVEL: Released	
SCALE: NTS DRAWING NO: SE208119 SHEET 18 OF 19		REV: M	

8

7

6

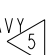
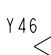
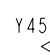
5

4

3

2

1

CATALOG NO.	FIG. NO.	CONDUCTOR			BOLT SIZE	DIMENSIONS									INSTALLATION TOOLING (# CRIMPS)							
		FLEX	CODE (AWG)	NAVY 		B	C	E	H	K	L	N	O.D.	T REF.	Z MIN.	DIE INDEX	COLOR CODE	HYDRAULIC			DIELESS (# CRIMPS)	WIRE STRIP LENGTH
																		Y750 Y35 Y39	Y46 	Y45 		
YA40L2TC38FX	1	646 kcmil 1600/24 (650 kcmil FLEX)	--	--	3/8	1.42 [36]	1.98 [50]	1.00 [25]	--	.41 [10]	4.38 [111]	.50 [13]	1.35 [34]	.30 [8]	.52 [13]	24	BLACK	U39RT (2)	U39RT (2)	U39RT (2)	HYDRAULIC: Y644M (1)	1-5/16"
YA40L2TC38FX45	2					2.71 [69]			2.91 [74]													
YA40L2TC38FX90	3					2.89 [73]			2.91 [74]													
YA40L2NNTFX	1	646 kcmil 1600/24 (650 kcmil FLEX)	--	--	1/2	1.42 [36]	1.63 [41]	1.75 [44]	--	.56 [14]	5.38 [137]	.63 [16]	1.35 [34]	.30 [8]	.65 [17]	24	BLACK	U39RT (2)	U39RT (2)	U39RT (2)	HYDRAULIC: Y644M (1)	1-5/16"
YA40L2NNTFX45	2								2.71 [69]									3.91 [99]				
YA40L2NNTFX90	3								2.89 [73]									3.91 [99]				
YA40L2NTCFX	1	646 kcmil 1600/24 (650 kcmil FLEX)	--	--	1/2	1.42 [36]	1.98 [50]	1.75 [44]	--	.56 [14]	5.38 [137]	.63 [16]	1.35 [34]	.30 [8]	.65 [17]	24	BLACK	U39RT (2)	U39RT (2)	U39RT (2)	HYDRAULIC: Y644M (1)	1-5/16"
YA40L2NTCFX45	2								2.71 [69]									3.91 [99]				
YA40L2NTCFX90	3								2.89 [73]									3.91 [99]				

DRAWING NO.  
SE208119

7 6 5 4 3 2 1

REV	DATE	DESCRIPTION	ECO	BY	CHK
M	05/21/2014 11:05:00 AM	CAT. # YA44L2TC38FX ADDED TO THE TABLE	36112	BSB	PB

D	CATALOG NO.	FIG. NO.	CONDUCTOR			BOLT SIZE	DIMENSIONS										INSTALLATION TOOLING (# CRIMPS)																																																																																			
			FLEX	CODE (AWG)	NAVY 5		B	C	E	H	K	L	N	O.D.	T REF.	Z MIN.	DIE INDEX	COLOR CODE	HYDRAULIC			DIELESS (# CRIMPS)	WIRE STRIP LENGTH																																																																													
																			Y750 Y35 Y39	Y46 4	Y45 3																																																																															
	YA44L2TC38FX	1	777.7 kcmil 1925/24 (750 kcmil/FLEX)	--	--	3/8	1.65 [42]	2.19 [56]	1.00 [25]	--	.40 [10]	4.74 [120]	.50 [13]	1.50 [38]	.33 [8]	.53 [13]	L115	YELLOW	U44XRT UR4141WE (2)	U44XRT UR4141WE (2)	U44XRT UR4141WE (2)	HYDRAULIC: Y644M (1)	1-5/8"																																																																													
	YA44L2TC38FX45	2					3.07 [78]	3.29 [84]		5.05 [128]		5.02 [128]												3.33 [85]	5.30 [135]	5.27 [134]	3.58 [91]	5.74 [146]	5.52 [140]	3.83 [97]	4.74 [120]	4.71 [120]	3.02 [77]																																																																			
	YA44L2TC38FX90	3					3.07 [78]	3.29 [84]		5.05 [128]		5.02 [128]												3.33 [85]	5.30 [135]	5.27 [134]	3.58 [91]	5.74 [146]	5.52 [140]	3.83 [97]	4.74 [120]	4.71 [120]	3.02 [77]																																																																			
	YA44L2TC12FX	1					777.7 kcmil 1925/24 (750 kcmil/flex)	--	--	1/2	1.65 [42]	2.19 [56]	1.25 [32]											--	.53 [13]	5.05 [128]	.53 [13]	1.50 [38]	.33 [8]	.56 [14]	L115	YELLOW	U44XRT UR4141WE (2)	U44XRT UR4141WE (2)	U44XRT UR4141WE (2)	HYDRAULIC: Y644M (1)	1-5/8"																																																															
	YA44L2TC12FX45	2																						3.07 [78]		3.29 [84]												5.05 [128]	5.02 [128]	3.33 [85]	5.30 [135]	5.27 [134]	3.58 [91]	5.74 [146]	5.52 [140]	3.83 [97]	4.74 [120]	4.71 [120]	3.02 [77]																																																			
	YA44L2TC12FX90	3																						3.07 [78]		3.29 [84]												5.05 [128]	5.02 [128]	3.33 [85]	5.30 [135]	5.27 [134]	3.58 [91]	5.74 [146]	5.52 [140]	3.83 [97]	4.74 [120]	4.71 [120]	3.02 [77]																																																			
	YA44L2TC12E3FX	1											777.7 kcmil 1925/24 (750 kcmil/flex)											--	--	1/2	1.65 [42]											2.19 [56]	1.50 [38]	--	.53 [13]	5.30 [135]	.53 [13]	1.50 [38]	.33 [8]	.56 [14]	L115	YELLOW	U44XRT UR4141WE (2)	U44XRT UR4141WE (2)	U44XRT UR4141WE (2)	HYDRAULIC: Y644M (1)	1-5/8"																																															
	YA44L2TC12E3FX45	2																																						3.07 [78]		3.29 [84]												5.30 [135]	5.27 [134]	3.58 [91]	5.74 [146]	5.52 [140]	3.83 [97]	5.71 [145]	4.02 [102]	5.52 [140]	3.83 [97]	4.74 [120]	4.71 [120]	3.02 [77]																																		
	YA44L2TC12E3FX90	3																																						3.07 [78]		3.29 [84]												5.30 [135]	5.27 [134]	3.58 [91]	5.74 [146]	5.52 [140]	3.83 [97]	5.71 [145]	4.02 [102]	5.52 [140]	3.83 [97]	4.74 [120]	4.71 [120]	3.02 [77]																																		
	YA44L2NTCFX	1																																					777.7 kcmil 1925/24 (750 kcmil/flex)	--	--	1/2	1.65 [42]											2.19 [56]	1.75 [44]	--	.56 [14]	5.74 [146]	.63 [16]	1.50 [38]	.33 [8]	.65 [17]	L115	YELLOW	U44XRT UR4141WE (2)	U44XRT UR4141WE (2)	U44XRT UR4141WE (2)	HYDRAULIC: Y644M (1)	1-5/8"																															
	YA44L2NTCFX45	2																																																						3.07 [78]		3.29 [84]												5.74 [146]	5.71 [145]	4.02 [102]	5.52 [140]	3.83 [97]	5.71 [145]	4.02 [102]	5.52 [140]	3.83 [97]	4.74 [120]	4.71 [120]	3.02 [77]																			
	YA44L2NTCFX90	3																																																						3.07 [78]		3.29 [84]												5.74 [146]	5.71 [145]	4.02 [102]	5.52 [140]	3.83 [97]	5.71 [145]	4.02 [102]	5.52 [140]	3.83 [97]	4.74 [120]	4.71 [120]	3.02 [77]																			
	YA44L2TC58FX	1																																																					777.7 kcmil 1925/24 (750 kcmil/flex)	--	--	5/8	1.65 [42]											2.19 [56]	1.50 [38]	--	.69 [17]	5.52 [140]	.66 [17]	1.50 [38]	.33 [8]	.68 [17]	L115	YELLOW	U44XRT UR4141WE (2)	U44XRT UR4141WE (2)	U44XRT UR4141WE (2)	HYDRAULIC: Y644M (1)	1-5/8"															
	YA44L2TC58FX45	2																																																																						3.07 [78]		3.29 [84]												5.52 [140]	5.52 [140]	3.83 [97]	5.74 [146]	5.71 [145]	4.02 [102]	5.52 [140]	3.83 [97]	4.74 [120]	4.71 [120]	3.02 [77]				
	YA44L2TC58FX90	3																																																																						3.07 [78]		3.29 [84]												5.52 [140]	5.52 [140]	3.83 [97]	5.74 [146]	5.71 [145]	4.02 [102]	5.52 [140]	3.83 [97]	4.74 [120]	4.71 [120]	3.02 [77]				
	YA44L2NT38FX	1	777.7 kcmil 1925/24 (750 kcmil/flex)	--	--	3/8								1.65 [42]	2.19 [56]	1.63 [41]	1.00 [25]	--	.40 [10]	4.74 [120]	.50 [13]	1.50 [38]	.33 [8]																																																.53 [13]	L115	YELLOW	U44XRT UR4141WE (2)	U44XRT UR4141WE (2)											U44XRT UR4141WE (2)	HYDRAULIC: Y644M (1)	1-5/8"												
	YA44L2NT38FX45	2																3.07 [78]		3.29 [84]																																																																					4.74 [120]	4.71 [120]	3.02 [77]	5.74 [146]	5.71 [145]	4.02 [102]	5.52 [140]	3.83 [97]	4.74 [120]	4.71 [120]	3.02 [77]	
	YA44L2NT38FX90	3																3.07 [78]		3.29 [84]																																																																					4.74 [120]	4.71 [120]	3.02 [77]	5.74 [146]	5.71 [145]	4.02 [102]	5.52 [140]	3.83 [97]	4.74 [120]	4.71 [120]	3.02 [77]	
	YA44L2NNTFX	1					777.7 kcmil 1925/24 (750 kcmil/flex)	--	--	1/2	1.65 [42]	2.19 [56]				1.63 [41]	1.75 [44]	--	.56 [14]	5.74 [146]	.63 [16]							1.50 [38]	.33 [8]	.65 [17]	L115	YELLOW	U44XRT UR4141WE (2)	U44XRT UR4141WE (2)	U44XRT UR4141WE (2)	HYDRAULIC: Y644M (1)	1-5/8"																																																															
	YA44L2NNTFX45	2																3.07 [78]		3.29 [84]																																																																					5.74 [146]	5.71 [145]	4.02 [102]	5.52 [140]	3.83 [97]	5.71 [145]	4.02 [102]	5.52 [140]	3.83 [97]	4.74 [120]	4.71 [120]	3.02 [77]
	YA44L2NNTFX90	3																3.07 [78]		3.29 [84]																																																																					5.74 [146]	5.71 [145]	4.02 [102]	5.52 [140]	3.83 [97]	5.71 [145]	4.02 [102]	5.52 [140]	3.83 [97]	4.74 [120]	4.71 [120]	3.02 [77]

SEE SHEET 1 OF 19 FOR NOTES

<p>TO ORDER BURNDY® PRODUCTS CALL          UNITED STATES          1-800-346-4175 (LONDONDERRY, NH)          CANADA:          1-800-361-6975 (QUEBEC)          1-800-387-6487 (ALL OTHER PROVINCES)          FOR PRODUCT INFO: <a href="http://www.burndy.com">http://www.burndy.com</a></p>		<p>HYLUG™          ITEM NO: N/A          CAT. NO: YA44L-2TC-FX- (SEE TABLE)          DRAWN BY: D.FILLION 12/08/92          CHECKER: K.HENRY 12/10/92          DSN APPVL: C.PALAGI 12/14/92          MFG APPVL: N/A --          QA APPVL: A.LLOYD 12/14/92          MKT APPVL: T.NELSON 12/14/92</p>	
<p>SCALE: NTS</p>		<p>PROJ. NO: --          PROJECT #: --          DOCUMENT TYPE: Sales          REL LEVEL: Released</p>	
<p>DRAWING NO SE208119</p>		<p>REV M</p>	

REV: PE0200

8 7 6 5 4 3 2 1