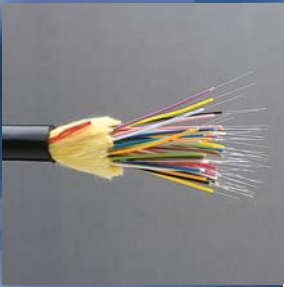


# hot products guide



people. passion. expertise.



[gocsc.com](http://gocsc.com)





## who is CSC?

Founded in 1972, Communications Supply Corporation (CSC), a subsidiary of WESCO International, Inc. (NYSE: WCC), distributes a full range of data communications and security solutions. Together, CSC and WESCO form the largest electrical, data communications and security network in North America, with 400 full-service branches and an international network designed to scale.

With vast resources at their fingertips, the CSC sales team does more than just provide product. Our tenured sales force has a passionate commitment to understanding your unique business needs and will strive every day to get you the best products, the most robust technical expertise, and the most cost-effective logistics solutions available in the data communications distribution business.



## why CSC?

it's simple. our people, passion, and expertise.

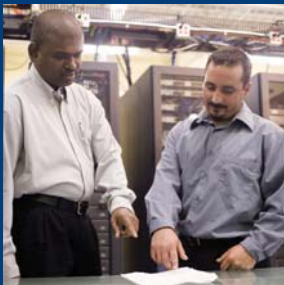
That's why customers choose CSC. They know our team will do whatever it takes to make them successful each and every day. They value the passion we put into everything we do, and realize — when their jobs are on the line — we'll be there with the answers they need. They view us as their trusted advisor, who can help them make the transition from legacy infrastructure technologies to state-of-the-art IP solutions. It's really that simple. More and more companies turn to CSC because of our people, passion, and expertise.



## services

CSC's distribution services help customers increase productivity and reduce costs by identifying and deploying services based on their specific project requirements. CSC offers an extensive range of services to fit your needs, including:

- 24/7 Customer Service and Support
- eBusiness Solutions
- Rapid Return Program
- Expedited Product Sourcing
- Feed-the-Job Delivery
- Project Staging
- Kitting and Labeling
- Strategic Sourcing and Supplier Selection
- Flexible Financing
- Technology Training and Education
- Custom and Consolidated Reporting
- Job Trailers
- Energy and Power Audits
- Recycling Services
- Integrated Supply
- Real-Time National Network
- Cut-to-Length Cabling Services



## solutions

CSC distributes a wide range of products to support commercial, residential, and government customer applications, including:

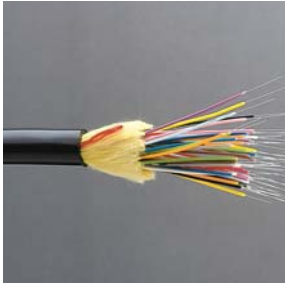
- Network Cabling and Connectivity
- Network Cabinets and Racks
- Data Center Products and Solutions
- Networking Electronics and Wireless
- Low-Voltage Cabling
  - ReelSimple
- Security Solutions
  - FTL Server and Storage
  - Sound and Paging
  - Video Surveillance
  - Notification
  - Professional Audio/Visual
  - Access Control
- Power, Cooling, and Monitoring
- Power-over-Ethernet
- Test Equipment
- Outside Plant Solutions
- Smart Grid Solutions
- FTTx (fiber to the home or business)
- Distributed Antenna Systems (DAS)



people, passion,  
AND expertise.







# hot products guide

## Optical Cable Corporation overview

From the development of their first cables through their current product offering that ranks among the industry's most comprehensive, Optical Cable Corporation (OCC®) is a company that provides uncompromising product quality and performance, with data communications cabling and connectivity solutions for a multitude of markets and applications.

For years, OCC has been internationally recognized for pioneering the design and production of fiber optic cables. Today, OCC is internationally recognized as a leader in engineering and manufacturing a complete line of top-tier cabling and connectivity solutions, including products and solutions suitable for the most demanding applications.

While OCC's heritage started with the military, their expertise now extends into the enterprise, broadcast, industrial, harsh environment and various specialty markets, and reaches worldwide through their network of distributors with customers in more than 70 countries.

OCC is headquartered in Roanoke, Virginia, and each of our three manufacturing facilities is located in the US. OCC's quality-management system and manufacturing facilities in Roanoke, Asheville, and Dallas are ISO 9001:2008 registered, and our Roanoke and Dallas facilities are certified by the U.S. Department of Defense as MIL-STD-790F, a reflection of strict compliance with government requirements.

OCC continues to drive standards for emerging technology such as 10GbE over copper connectivity and cabling, Category 6a cabling standards and Extended Power over Ethernet. OCC is making the most of these opportunities with one of the industry's widest array of structured communications product and solutions. The future is a new world, and OCC is helping it communicate.

## table of contents

<b>Copper Cable</b> .....	page(s)
Category 6A, 6 & 5e 4-Pair .....	2
<b>Copper Connectivity</b>	
Modular Jacks & Inserts .....	2
Modular Patch Panels & Accessories .....	3
<b>Fiber Optic Cable</b>	
Tight Buffered, Indoor .....	4-5
Tight Buffered, Indoor/Outdoor .....	5-6
Tight Buffered, Armored .....	7
Optical Fiber Characteristics .....	7
<b>Fiber Optic Connectivity</b>	
Distribution Panels/Enclosures .....	8-9
Splicing .....	9



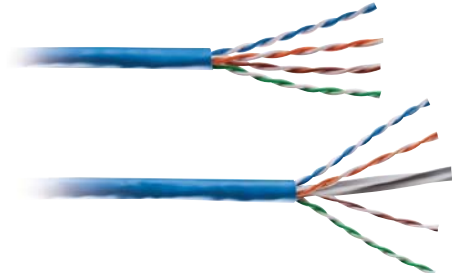
# Copper Cable

## CATEGORY 6A, 6 & 5E 4-PAIR

### OCC Copper Cable

Optical Cable Corporation's Category line of 4-pair copper cabling offers exceptional headroom and the assurance that application protocols will meet today's demanding needs. Together with their full line of copper connectivity components, OCC offers a complete end-to-end Category solution guaranteed to exceed customer expectations.

- Fully compliant with applicable category standards, offering guaranteed headroom
- Available in Riser and Plenum, Category 6a, 6, and 5e
- Compatible with OCC copper connectivity for optimal performance



CSC PART NO.	MFR. PART NO.	DESCRIPTION	CSC PART NO.	MFR. PART NO.	DESCRIPTION
470410-98947	OCC-UF6A4R-05	Category 6A U/FTP CMR Cable, Blue	470034-97963	OCC-U64R-05	Category 6+ CMR Cable, Blue
470034-97920	OCC-UF6A4PLM-05	Category 6A U/FTP CMP Cable, Blue	470034-97964	OCC-U64PLM-05	Category 6+ CMP Cable, Blue
470034-98218	OCC-U6A4R-05	Category 6A UTP CMR Cable, Blue	470034-97965	OCC-U5E4R-05	Category 5e 400 MHz CMR Cable, Blue
470034-98217	OCC-U6APLM-05	Category 6A UTP CMP Cable, Blue	470034-97966	OCC-U5E4PLM-05	Category 5e 400 MHz CMP Cable, Blue

NOTE: Other colors are available. Contact your local CSC Representative for color options.

# Copper Connectivity

## MODULAR JACKS & INSERTS

### OCC Information Outlets

#### Bezel Snap-In Jacks and Adapters

Optical Cable Corporation's Universal Modular Jack (UMJ) offers a unique locking bezel system that enables easy port identification and labeling at the work center. The jack and bezel combination creates a superior hold on the faceplate, making it virtually impossible to accidentally remove the jack.



CSC PART NO.	MFR. PART NO.	DESCRIPTION	CSC PART NO.	MFR. PART NO.	DESCRIPTION
470034-01281	U6A01	UMJ Category 6a 568A/B Jack, Office White	470034-00589	APBLK01	UMJ Blank Insert (Bag of 20), Office White
470034-01393	UMJA601	UMJ Category 6 568A/B Jack, Office White	470034-00430	AABNC01	UMJ BNC Adapter, Office White
470034-01300	UMJA5E01	UMJ Category 5e 568A/B Jack, Office White	470034-00482	AASCM01	UMJ SC Multimode Adapter, Office White
470034-01564	UMJVL8A/B01	UMJ Category 5e 568A/B Lead Frame Jack, Office White	470034-00508	AASTM01	UMJ ST Multimode Adapter, Office White
470034-01486	UMJL06U01	UMJ Category 3 USOC Jack, Office White	470034-00443	AADLCM01	UMJ Duplex LC Multimode Adapter, Office White
470034-00456	AAF01	UMJ F-Connector, Office White			

NOTE: Other colors available — 00-Electrical Ivory, 02-Black, 03-Red, 04-Green, 05-Blue, 06-Grey, 08-Orange, 09-Yellow, 10-Purple, 11-Brown, 12-Bright White; replace 01 in MFR. PART NO. (minimum and longer lead times may apply). Icon identifier available by adding following letter to end of MFR. PART NO.: V = Voice, D = Data, F = Fax, L = LAN, M = Modem.

#### Keystone Snap-In Jacks and Adapters

Optical Cable Corporation's Keystone Jacks and Adapters were created for industry-standard installations but designed with their superior performance in mind. The KMJ product line offers customers a variety of connector options with the aesthetic appeal of Keystone style.



CSC PART NO.	MFR. PART NO.	DESCRIPTION	CSC PART NO.	MFR. PART NO.	DESCRIPTION
470034-01066	K6A01	Keystone Category 6a 568A/B Jack, Office White	470034-00562	AKF01	Keystone F-Connector, Office White
470034-01068	K6A02S	Keystone Category 6a 568A/B Jack, Shielded	470034-00550	AKBLK01	Keystone Blank Insert (bag of 20), Office White
470034-01108	KMJA601	Keystone Category 6 568A/B Jack, Office White	470034-00553	AKBNC01	Keystone BNC Adapter, Office White
470034-97989	KMJSIX02S	Keystone Category 6 568A/B Jack, Shielded	470034-00586	AKSVHS01	Keystone Super VHS Adapter, Office White
470034-01081	KMJA5E01	Keystone Enhanced Category 5e 568A/B Jack, Office White	470034-00580	AKSCM01	Keystone SC Multimode Adapter, Office White
470034-01161	KMJVL8A/B01	Keystone Category 5e 568A/B Jack, Office White	470034-00583	AKSTM01	Keystone ST Multimode Adapter, Office White
470034-01083	KMJA5E02S	Keystone Category 5e 568A/B Jack, Shielded	470034-98175	AKRCA11001	Keystone RCA to 110 Adapter, Office White
470034-01135	KMJL06U01	Keystone Category 3 USOC Jack, Office White	470034-00577	AKRCAPO1	Keystone RCA Coupler Adapter, Office White
			470034-98176	AKBP01	Keystone Binding Posts (pair), Office White

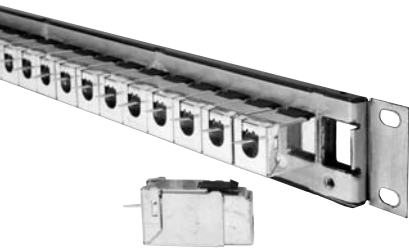
NOTE: Other jack colors available — 00-Electrical Ivory, 02-Black, 03-Red, 05-Blue, 06-Grey, 08-Orange, 12-Bright White; replace 01 in MFR. PART NO. Other adapter colors available — 00-Electrical Ivory, 12-Bright White; replace 01 in MFR. PART NO.

# Copper Connectivity

## MODULAR PATCH PANELS & ACCESSORIES

### OCC Patch Panels

#### Category 6A Patch Panels UTP and STP



OCC's Category 6A Patch Panels offer a high-density solution for guaranteed 10GBASE-T Ethernet applications. Both UTP and FTP Category 6A patch panels present a product solution that exceeds 10Gbit standards by TIA/EIA and promises superior performance compliance. As a 10-Gig component, the Category 6A patch panel is ideal for end users who are looking for advanced network performance to keep their infrastructure lasting well into the future.

- Guaranteed Augmented Category 6 compliant to TIA-TSB 155, 568B.2-10, ISO 24750, and IEEE 802.3an 10GBASE-T link segment (Clause 55.7) — when installed with approved cable and patch cords
- All-steel construction ensures panel rigidity and reliable terminations
- High-density configuration allows for 24 ports in a 1U rack space
- CSA Certified
- Write-on window plates for port identification

CSC PART NO.	MFR. PART NO.	DESCRIPTION
<b>Patch Panel, Category 6A, Utilizing K6A02 Connectors</b>		
470034-98215	DCC1688/1106A	16 Port, 110, UTP, 1 RU
470034-98214	DCC2488/1106A	24 Port, 110, UTP, 1 RU
470034-98213	ACC1688/1106A	16 Port, 110, UTP, 1 RU
470034-98212	ACC2488/1106A	24 Port, 110, UTP, 1 RU, Angled
<b>Patch Panel, Category 6A, Utilizing K6A02S Connectors</b>		
470034-98211	DCC1688/1106A-S	16 Port, 110, Shielded, 1 RU
470034-98210	DCC2488/1106A-S	24 Port, 110, Shielded, 1 RU
470034-98209	DCC4888/1106A-S	48 Port, 110, Shielded, 1 RU
470034-98208	ACC1688/1106A-S	16 Port, 110, Shielded, 1 RU, Angled
470034-98207	ACC2488/1106A-S	24 Port, 110, Shielded, 1 RU, Angled
470034-98206	ACC4888/1106A-S	48 Port, 110, Shielded, 2 RU, Angled

#### Category 5e Patch Panels

Optical Cable Corporation's Category 5e Patch Panels incorporate one of the best design and application performance specifications. Designed for the most demanding network applications, these 5e patch panels offer customers one of the highest levels of headroom to any Category 5e link or channel in an easy-to-install 110 punchdown format and universal T568A/B wiring configuration.

CSC PART NO.	MFR. PART NO.	DESCRIPTION
470034-02484	DCC1288/110A5E	Category 5e Patch Panel — Universal A or B Wired, 1 RU, 12 Ports
470034-02487	DCC1688/110A5E	Category 5e Patch Panel — Universal A or B Wired, 1 RU, 16 Ports
470034-02409	DCC2488/110A5E	Category 5e Patch Panel — Universal A or B Wired, 1 RU, 24 Ports
470034-02438	DCC3288/110A5E	Category 5e Patch Panel — Universal A or B Wired, 2 RU, 32 Ports
470034-02455	DCC4888/110A5E	Category 5e Patch Panel — Universal A or B Wired, 2 RU, 48 Ports
470034-02209	DCC6488/110A5E	Category 5e Patch Panel — Universal A or B Wired, 4 RU, 64 Ports
470034-02217	DCC9688/110A5E	Category 5e Patch Panel — Universal A or B Wired, 4 RU, 96 Ports
470034-02482	DCC12088/110A5E	Category 5e Patch Panel — Universal A or B Wired, 5 RU, 120 Ports
470034-02280	PP12A5E	Category 5e Patch Panel — Universal A or B Wired, Wall Mount, 12 Ports (89D bracket)
470034-02276	PP1288/110A5E	Category 5e Patch Panel — Universal A or B Wired, Wall Mount, 12 Ports
470034-02284	PP2488/110A5E	Category 5e Patch Panel — Universal A or B Wired, Wall Mount, 24 Ports
470034-02503	ACC2488/110A5E	Category 5e Angled Patch Panel — Universal A or B Wired, 1 RU, 24 Ports
470034-02509	ACC4888/110A5E	Category 5e Angled Patch Panel — Universal A or B Wired, 2 RU, 48 Ports

#### Category 6 Patch Panels UTP and STP

Optical Cable Corporation's Category 6 Patch Panels were designed to exceed industry expectations and surpass governing standards. These Category 6 connectivity components offer patented PCB technology and guaranteed bandwidth performance in an easy 110 style punchdown and universal T568A/B wiring.



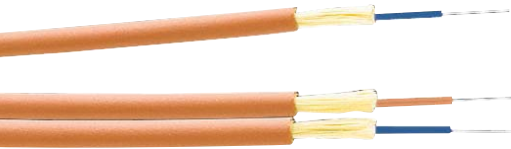
CSC PART NO.	MFR. PART NO.	DESCRIPTION
<b>Wall Mount Patch Panel</b>		
470034-02281	PP12SIX	568A/B Wired, 12 Port, 89D Bracket
470034-02277	PP1288/110A6	568A/B Wired, 12 Port
470034-02285	PP2488/110A6	568A/B Wired, 24 Port
<b>Rack Mount Patch Panel</b>		
470034-02485	DCC1288/110SIX	568A/B Wired, 12 Port, 1 RU
470034-02490	DCC1688/110SIX	568A/B Wired, 16 Port, 1 RU
470034-02412	DCC2488/110SIX	568A/B Wired, 24 Port, 1 RU
470034-02439	DCC3288/110SIX	568A/B Wired, 32 Port, 2 RU
470034-02197	DCC4888/110SIX	568A/B Wired, 48 Port, 2 RU
470034-02210	DCC6488/110SIX	568A/B Wired, 64 Port, 4 RU
470034-02218	DCC9688/110SIX	568A/B Wired, 96 Port, 4 RU
470034-02483	DCC12088/110SIX	568A/B Wired, 120 Port, 5 RU
470034-02491	DCC1688/110SIX-S	16 Port, KMJ Shielded Jacks, 1 RU
470034-02413	DCC2488/110SIX-S	24 Port, KMJ Shielded Jacks, 2 RU
470034-02440	DCC3288/110SIX-S	32 Port, KMJ Shielded Jacks, 2 RU
470034-02198	DCC4888/110SIX-S	48 Port, KMJ Shielded Jacks, 2 RU
470034-02504	ACC2488/110SIX	Angled, 568A/B Wired, 24 Port, 1 RU
470034-02510	ACC4888/110SIX	Angled, 568A/B Wired, 48 Port, 2 RU





# Fiber Optic Cable

## TIGHT BUFFERED, INDOOR



- Resilient and flexible for jumpers, patch cords, and pigtails
- Suitable for general-purpose indoor use, such as routing connections in patching systems
- Short “patch cord” cables ideal for links between electronic equipment and main fiber optic cables
- Micro cables are specifically designed for small form-factor simplex and duplex connectors, such as MT-RJ and LC connectors
- 900 micron buffer is standard; 600 micron buffer is optional

### Interconnect Cables — 2.9mm AX-Series Interconnect Riser Cables

CSC PART NO.	MFR. PART NO.	DESCRIPTION	CSC PART NO.	MFR. PART NO.	DESCRIPTION
470034-98171	AX001NWS90R	62.5/125 MM — 1 Fiber, Orange	470034-98585	AX002NWS90R	62.5/125 MM — 2 Fiber, Orange
470034-98174	AX001NALS90R	50/125 MM — 1 Fiber, Orange	470034-98167	AX002NALS90R	50/125 MM — 2 Fiber, Orange
470034-98173	AX001NALT9QR	10 GIG 50/125 MM — 1 Fiber, Aqua	470034-98166	AX002NALT9QR	10 GIG 50/125 MM — 2 Fiber, Aqua
470034-98172	AX001NSLX9YR	Singlemode — 1 Fiber, Yellow	470034-98165	AX002NSLX9YR	Singlemode — 2 Fiber, Yellow

### Interconnect Cables — 2.9mm AX-Series Interconnect Plenum Cables

CSC PART NO.	MFR. PART NO.	DESCRIPTION	CSC PART NO.	MFR. PART NO.	DESCRIPTION
470034-98168	AX001SWLS90P	62.5/125 MM — 1 Fiber, Orange	470034-98703	AX002SWLS90P	62.5/125 MM — 2 Fiber, Orange
470034-98706	AX001SALS90P	50/125 MM — 1 Fiber, Orange	470034-98705	AX002SALS90P	50/125 MM — 2 Fiber, Orange
470034-98170	AX001SALT9QP	10 GIG 50/125 MM — 1 Fiber, Aqua	470034-98164	AX002SALT9QP	10 GIG 50/125 MM — 2 Fiber, Aqua
470034-98169	AX001SSLX9YP	Singlemode — 1 Fiber, Yellow	470034-98704	AX002SSLX9YP	Singlemode — 2 Fiber, Yellow

### Interconnect Cables — 1.6mm AX-Series Micro Interconnect Riser Cables

CSC PART NO.	MFR. PART NO.	DESCRIPTION	CSC PART NO.	MFR. PART NO.	DESCRIPTION
470034-98189	AC001DWLS90R	62.5/125 MM — 1 Fiber, Orange	470034-98181	AC002DWLS90R	62.5/125 MM — 2 Fiber, Orange
470034-98192	AC001DALS90R	50/125 MM — 1 Fiber, Orange	470034-98184	AC002DALS90R	50/125 MM — 2 Fiber, Orange
470034-98191	AC001DALT9QR	10 GIG 50/125 MM — 1 Fiber, Aqua	470034-98183	AC002DALT9QR	10 GIG 50/125 MM — 2 Fiber, Aqua
470034-98190	AC001DSLX9YR	Singlemode — 1 Fiber, Yellow	470034-98182	AC002DSLX9YR	Singlemode — 2 Fiber, Yellow

### Interconnect Cables — 1.6mm AX-Series Micro Interconnect Plenum Cables

CSC PART NO.	MFR. PART NO.	DESCRIPTION	CSC PART NO.	MFR. PART NO.	DESCRIPTION
470034-98185	AC001SWLS90P	62.5/125 MM — 1 Fiber, Orange	470034-98177	AC002SWLS90P	62.5/125 MM — 2 Fiber, Orange
470034-98188	AC001SALS90P	50/125 MM — 1 Fiber, Orange	470034-98180	AC002SALS90P	50/125 MM — 2 Fiber, Orange
470034-98187	AC001SALT9QP	10 GIG 50/125 MM — 1 Fiber, Aqua	470034-98179	AC002SALT9QP	10 GIG 50/125 MM — 2 Fiber, Aqua
470034-98186	AC001SSLX9YP	Singlemode — 1 Fiber, Yellow	470034-98178	AC002SSLX9YP	Singlemode — 2 Fiber, Yellow

Other cable diameters and optical fiber types are available upon request; contact your local CSC Representative. Refer to Optical Fiber Characteristics charts on page 7.

## HD Bend-Tolerant Fiber Optic Cables

OCC's High-Density (HD)™ Bend-Tolerant cables are perfect for data centers and space-constrained applications. The small diameter of the Bend-Tolerant HD cable construction saves space and greatly increases capacity in systems, improves cable management, increases cooling efficiency, and reduces cost for under-raised floor cabling systems in data centers. Coupled with OCC's MT cable assemblies and smaller-footprint HD MT Cassette, the new Bend-Tolerant HD cable design offers true plug-and-play connectivity for a multitude of applications.



### Features

- Smaller and lighter than conventional sub-grouped cable
- Easily ribbonized for use with MPO style connectors
- UL® Listed in accordance with NEC® section 770.179(a)
- Cable materials are UV and fungus resistant
- Superior bend performance with negligible dB loss at very small bend radii

### Benefits

- Ideal for use in trunk, LAN, data center, 40/100 GbE, and other high-density applications where small size, light weight, and very small bend radii are needed or required
- Inventory one cable type to cover the complete range of legacy ST, SC, FC, LC, and advanced MPO style connectivity
- Great for installation in ducts, plenums, risers, and air handling spaces
- Space-saving applications where an MTP can be directly terminated to the sub-cables
- Small diameter — saving space and greatly increasing capacity in tray systems — improves cable management and increases cooling power efficiency and cost for under-raised floor cabling systems in data centers

CSC PART NO.	MFR. PART NO.	DESCRIPTION	CSC PART NO.	MFR. PART NO.	DESCRIPTION
470034-98205	HD008SABTJQP	HD Bend-Tolerant 10 Gig 50/125 MM — 8 Fiber, Aqua	470034-98202	HD012SABTJQP	HD Bend-Tolerant 10 Gig 50/125 MM — 12 Fiber Aqua
470034-98204	HD008SSLAJYP	HD Bend-Tolerant Singlemode — 8 Fiber, Yellow	470410-98950	HD012SSLAJYP	HD Bend-Tolerant Singlemode — 12 Fiber Yellow

NOTE: Additional fiber types and counts available; contact your local CSC Representative. Refer to Optical Fiber Characteristics charts on page 7.

## Fiber Optic Cable

### TIGHT BUFFERED, INDOOR



- Tight-buffered, compact cable design for limited conduit space
- Flexible, rugged, high-strength construction for long cable pulls
- May be directly terminated with connectors with physical protection at termination points
- Suitable for both indoor and outdoor use — no need to splice outdoor cable to indoor cable at the building entrance
- 2–144 fibers

#### DX-Series Distribution Riser Cables

CSC PART NO.	MFR. PART NO.	DESCRIPTION*
470034-98517	DX002DWLS9OR	62.5/125 MM — 2 Fiber, Orange
470034-98519	DX002DALS9OR	50/125 MM — 2 Fiber, Orange
470034-98112	DX002DALX9QR	10 GIG 50/125 MM — 2 Fiber, Aqua
470034-98111	DX002DSLX9YR	Singlemode — 2 Fiber, Yellow
470034-98104	DX004DWLS9OR	62.5/125 MM — 4 Fiber, Orange
470034-98511	DX004DALS9OR	50/125 MM — 4 Fiber, Orange
470034-98108	DX004DALX9QR	10 GIG 50/125 MM — 4 Fiber, Aqua
470034-98106	DX004DSLX9YR	Singlemode — 4 Fiber, Yellow
470034-98495	DX006DWLS9OR	62.5/125 MM — 6 Fiber, Orange
470034-98500	DX006DALS9OR	50/125 MM — 6 Fiber, Orange
470034-98893	DX006DALX9QR	10 GIG 50/125 MM — 6 Fiber, Aqua
470034-98094	DX006DSLX9YR	Singlemode — 6 Fiber, Yellow
470034-98081	DX012DWLS9OR	62.5/125 MM — 12 Fiber, Orange
470034-98479	DX012DALS9OR	50/125 MM — 12 Fiber, Orange
470034-98850	DX012DALX9QR	10 GIG 50/125 MM — 12 Fiber, Aqua
470034-98082	DX012DSLX9YR	Singlemode — 12 Fiber, Yellow

CSC PART NO.	MFR. PART NO.	DESCRIPTION*
470034-98443	DX024DWLS9OR	62.5/125 MM — 24 Fiber, Orange
470034-98074	DX024DALS9ORR	50/125 MM — 24 Fiber, Orange
470034-98447	DX024DALX9QR	10 GIG 50/125 MM — 24 Fiber, Aqua
470034-98071	DX024DSLX9YR	Singlemode — 24 Fiber, Yellow
470034-98060	DX036DWLS9OR	62.5/125 MM — 36 Fiber, Orange
470034-98065	DX036DALS9OR	50/125 MM — 36 Fiber, Orange
470034-98235	DX036DALX9QR	10 GIG 50/125 MM — 36 Fiber, Aqua
470034-98062	DX036DSLX9YR	Singlemode — 36 Fiber, Yellow
470034-98047	DX048DWLS9OR	62.5/125 MM — 48 Fiber, Orange
470034-98052	DX048DALS9OR	50/125 MM — 48 Fiber, Orange
470034-98050	DX048DALX9QR	10 GIG 50/125 MM — 48 Fiber, Aqua
470034-98048	DX048DSLX9YR	Singlemode — 48 Fiber, Yellow
470034-98036	DX072DWLS9OR	62.5/125 MM — 72 Fiber, Orange
470034-98039	DX072DALS9OR	50/125 MM — 72 Fiber, Orange
470034-98038	DX072DALX9QR	10 GIG 50/125 MM — 72 Fiber, Aqua
470034-98037	DX072DSLX9YR	Singlemode — 72 Fiber, Yellow

#### DX-Series Distribution Indoor Plenum Cables

CSC PART NO.	MFR. PART NO.	DESCRIPTION*
470034-98513	DX002SWLS9OP	62.5/125 MM — 2 Fiber, Orange
470034-98514	DX002SALS9OP	50/125 MM — 2 Fiber, Orange
470034-98110	DX002SALT9QP	10 GIG 50/125 MM — 2 Fiber, Aqua
470034-98245	DX002SSLX9YP	Singlemode — 2 Fiber, Yellow
470034-98508	DX004SWLS9OP	62.5/125 MM — 4 Fiber, Orange
470034-98234	DX004SALS9OP	50/125 MM — 4 Fiber, Orange
470034-98098	DX004SALT9QP	10 GIG 50/125 MM — 4 Fiber, Aqua
470034-98097	DX004SSLX9YP	Singlemode — 4 Fiber, Yellow

CSC PART NO.	MFR. PART NO.	DESCRIPTION*
470034-98985	DX006SWLS9OP	62.5/125 MM — 6 Fiber, Orange
470034-98487	DX006SALS9OP	50/125 MM — 6 Fiber, Orange
470034-98087	DX006SALT9QP	10 GIG 50/125 MM — 6 Fiber, Aqua
470034-98086	DX006SSLX9YP	Singlemode — 6 Fiber, Yellow
470034-98461	DX012SWLS9OP	62.5/125 MM — 12 Fiber, Orange
470034-98230	DX012SALS9OP	50/125 MM — 12 Fiber, Orange
470034-98465	DX012SALT9QP	10 GIG 50/125 MM — 12 Fiber, Aqua
470034-98464	DX012SSLX9YP	Singlemode — 12 Fiber, Yellow

\* Other fiber counts and optical fiber types are available upon request; contact your local CSC Representative. Refer to Optical Fiber Characteristics charts on page 7.

### TIGHT BUFFERED, INDOOR/OUTDOOR



- Tight-buffered, compact cable design for limited conduit space
- Flexible, rugged, high-strength construction for long cable pulls
- 2–144 fibers
- May be directly terminated with connectors with physical protection at termination points
- Suitable for both indoor and outdoor use — no need to splice outdoor cable to indoor cable at the building entrance

#### DX-Series Distribution Indoor/Outdoor Plenum Cables

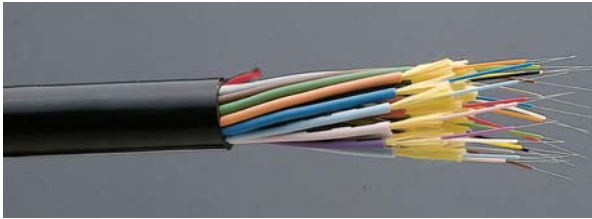
CSC PART NO.	MFR. PART NO.	DESCRIPTION*
470034-98488	DX006KWLS9OP	62.5/125 MM — 6 Fiber, Orange
470034-98093	DX006KALS9OP	50/125 MM — 6 Fiber, Orange
470034-98091	DX006KALT9QP	10 GIG 50/125 MM — 6 Fiber, Aqua
470034-98491	DX006KSXLX9YP	Singlemode — 6 Fiber, Yellow
470034-98467	DX012KWLS9OP	62.5/125 MM — 12 Fiber, Orange
470034-98471	DX012KALS9OP	50/125 MM — 12 Fiber, Orange
470034-98470	DX012KALT9QP	10 GIG 50/125 MM — 12 Fiber, Aqua
470034-98846	DX012KSXLX9YP	Singlemode — 12 Fiber, Yellow
470034-98432	DX024KWLS9OP	62.5/125 MM — 24 Fiber, Orange
470034-98437	DX024KALS9OP	50/125 MM — 24 Fiber, Orange
470034-98819	DX024KALT9QP	10 GIG 50/125 MM — 24 Fiber, Aqua
470034-98434	DX024KSXLX9YP	Singlemode — 24 Fiber, Yellow

CSC PART NO.	MFR. PART NO.	DESCRIPTION*
470034-98688	DX036KWLS9OP	62.5/125 MM — 36 Fiber, Orange
470034-98058	DX036KALS9OP	50/125 MM — 36 Fiber, Orange
470034-98056	DX036KALT9QP	10 GIG 50/125 MM — 36 Fiber, Aqua
470034-98426	DX036KSXLX9YP	Singlemode — 36 Fiber, Yellow
470034-98686	DX048KWLS9OP	62.5/125 MM — 48 Fiber, Orange
470034-98045	DX048KALS9OP	50/125 MM — 48 Fiber, Orange
470034-98043	DX048KALT9QP	10 GIG 50/125 MM — 48 Fiber, Aqua
470034-98881	DX048KSXLX9YP	Singlemode — 48 Fiber, Yellow
470034-98977	DX072KWLS9OP	62.5/125 MM — 72 Fiber, Orange
470034-98401	DX072KALS9OP	50/125 MM — 72 Fiber, Orange
470034-98035	DX072KALT9QP	10 GIG 50/125 MM — 72 Fiber, Aqua
470034-98835	DX072KSXLX9YP	Singlemode — 72 Fiber, Yellow

\* Other fiber counts and optical fiber types are available upon request; contact your local CSC Representative. Refer to Optical Fiber Characteristics charts on page 7.

# Fiber Optic Cable

## TIGHT BUFFERED, INDOOR/OUTDOOR



- Most user-friendly design and construction for LAN applications
- Core-Locked™ outer jacket design for installation survivability, long-term trouble-free service, and use in long, vertical installations
- Fibers may be directly terminated using connectors, with no further protection required
- Suitable for both indoor and outdoor use — no need to splice outdoor cable to indoor cable at the building entrance
- 2–72 fibers

### BX-Series Breakout Riser Cables

CSC PART NO.	MFR. PART NO.	DESCRIPTION*
470034-98160	BX002DWLS9OR	62.5/125 MM — 2 Fiber, Orange
470034-98163	BX002DALS9OR	50/125 MM — 2 Fiber, Orange
470034-98162	BX002DALT9QR	10 GIG 50/125 MM — 2 Fiber, Aqua
470034-98161	BX002DSLX9YR	Singlemode — 2 Fiber, Yellow
470034-98154	BX004DWLS9OR	62.5/125 MM — 4 Fiber, Orange
470034-98157	BX004DALS9OR	50/125 MM — 4 Fiber, Orange
470034-98156	BX004DALT9QR	10 GIG 50/125 MM — 4 Fiber, Aqua
470034-98155	BX004DSLX9YR	Singlemode — 4 Fiber, Yellow
470034-98551	BX006DWLS9OR	62.5/125 MM — 6 Fiber, Orange
470034-98150	BX006DALS9OR	50/125 MM — 6 Fiber, Orange
470034-98149	BX006DALT9QR	10 GIG 50/125 MM — 6 Fiber, Aqua
470034-98148	BX006DSLX9YR	Singlemode — 6 Fiber, Yellow
470034-98543	BX012DWLS9OR	62.5/125 MM — 12 Fiber, Orange
470034-98146	BX012DALS9OR	50/125 MM — 12 Fiber, Orange
470034-98145	BX012DALT9QR	10 GIG 50/125 MM — 12 Fiber, Aqua
470034-98144	BX012DSLX9YR	Singlemode — 12 Fiber, Yellow

CSC PART NO.	MFR. PART NO.	DESCRIPTION*
470034-98139	BX024DWLS9OR	62.5/125 MM — 24 Fiber, Orange
470034-98142	BX024DALS9OR	50/125 MM — 24 Fiber, Orange
470034-98141	BX024DALT9QR	10 GIG 50/125 MM — 24 Fiber, Aqua
470034-98140	BX024DSLX9YR	Singlemode — 24 Fiber, Yellow
470034-98133	BX036DWLS9OR	62.5/125 MM — 36 Fiber, Orange
470034-98136	BX036DALS9OR	50/125 MM — 36 Fiber, Orange
470034-98135	BX036DALT9QR	10 GIG 50/125 MM — 36 Fiber, Aqua
470034-98134	BX036DSLX9YR	Singlemode — 36 Fiber, Yellow
470034-98125	BX048DWLS9OR	62.5/125 MM — 48 Fiber, Orange
470034-98128	BX048DALS9OR	50/125 MM — 48 Fiber, Orange
470034-98127	BX048DALT9QR	10 GIG 50/125 MM — 48 Fiber, Aqua
470034-98126	BX048DSLX9YR	Singlemode — 48 Fiber, Yellow
470034-98113	BX072DWLS9OR	62.5/125 MM — 72 Fiber, Orange
470034-98116	BX072DALS9OR	50/125 MM — 72 Fiber, Orange
470034-98115	BX072DALT9QR	10 GIG 50/125 MM — 72 Fiber, Aqua
470034-98114	BX072DSLX9YR	Singlemode — 72 Fiber, Yellow

### BX-Series Breakout Plenum Cables

CSC PART NO.	MFR. PART NO.	DESCRIPTION*
470034-98556	BX002KWLS9OP	62.5/125 MM — 2 Fiber, Orange
470034-98159	BX002KALS9OP	50/125 MM — 2 Fiber, Orange
470034-98158	BX002KALT9QP	10 GIG 50/125 MM — 2 Fiber, Aqua
470034-98558	BX002KSLX9YP	Singlemode — 2 Fiber, Yellow
470034-98151	BX004KWLS9OP	62.5/125 MM — 4 Fiber, Orange
470034-98153	BX004KALS9OP	50/125 MM — 4 Fiber, Orange
470034-98152	BX004KALT9QP	10 GIG 50/125 MM — 4 Fiber, Aqua
470034-98555	BX004KSLX9YP	Singlemode — 4 Fiber, Yellow
470034-98546	BX006KWLS9OP	62.5/125 MM — 6 Fiber, Orange
470034-98549	BX006KALS9OP	50/125 MM — 6 Fiber, Orange
470034-98147	BX006KALT9QP	10 GIG 50/125 MM — 6 Fiber, Aqua
470034-98548	BX006KSLX9YP	Singlemode — 6 Fiber, Yellow
470034-98538	BX012KWLS9OP	62.5/125 MM — 12 Fiber, Orange
470034-98143	BX012KALS9OP	50/125 MM — 12 Fiber, Orange
470034-98541	BX012KALT9QP	10 GIG 50/125 MM — 12 Fiber, Aqua
470034-98540	BX012KSLX9YP	Singlemode — 12 Fiber, Yellow

CSC PART NO.	MFR. PART NO.	DESCRIPTION*
470034-98534	BX024KWLS9OP	62.5/125 MM — 24 Fiber, Orange
470034-98138	BX024KALS9OP	50/125 MM — 24 Fiber, Orange
470034-98137	BX024KALT9QP	10 GIG 50/125 MM — 24 Fiber, Aqua
470034-98536	BX024KSLX9YP	Singlemode — 24 Fiber, Yellow
470034-98129	BX036KWLS9OP	62.5/125 MM — 36 Fiber, Orange
470034-98132	BX036KALS9OP	50/125 MM — 36 Fiber, Orange
470034-98131	BX036KALT9QP	10 GIG 50/125 MM — 36 Fiber, Aqua
470034-98130	BX036KSLX9YP	Singlemode — 36 Fiber, Yellow
470034-98121	BX048KWLS9OP	62.5/125 MM — 48 Fiber, Orange
470034-98124	BX048KALS9OP	50/125 MM — 48 Fiber, Orange
470034-98123	BX048KALT9QP	10 GIG 50/125 MM — 48 Fiber, Aqua
470034-98122	BX048KSLX9YP	Singlemode — 48 Fiber, Yellow
470034-98117	BX060KWLS9OP	62.5/125 MM — 60 Fiber, Orange
470034-98120	BX060KALS9OP	50/125 MM — 60 Fiber, Orange
470034-98119	BX060KALT9QP	10 GIG 50/125 MM — 60 Fiber, Aqua
470034-98118	BX060KSLX9YP	Singlemode — 60 Fiber, Yellow

\* Other fiber counts and optical fiber types are available upon request; contact your local CSC Representative. Refer to Optical Fiber Characteristics charts on page 7.



# Fiber Optic Cable

## TIGHT BUFFERED, ARMORED

- Armored cables are suitable for direct-burial and aerial applications, as well as indoor/outdoor
- The armor is easily removed with an internal aramid strength member ripcord, leaving a flame-retardant (OFNR or OFNP rated) inner cable with the original cable part number and length markings printed on the cable; this eliminates the need to splice outdoor cable to indoor cable to meet the NEC® 50' maximum length requirement for outdoor cable used inside buildings
- Corrugated steel tape (CST) protects the fiber optic cable from rodents and provides additional stiffness for aerial lashing, if required
- Armored jacket is an add-on option which can be applied to most of the riser-rated and plenum-rated cable products — contact your local CSC Representative
- Suitable for direct field termination with most standard optical connectors



### DX-Series Distribution Cables with Corrugated Steel Tape Armor Indoor/Outdoor PVC Jacket

CSC PART NO.	MFR. PART NO.	DESCRIPTION*	CSC PART NO.	MFR. PART NO.	DESCRIPTION*
470034-98197	DX004DWLS9KA1	4 Fiber, 62.5/125 MM	470034-97913	DX012DWLS9KA1	12 Fiber, 62.5/125 MM
470034-97919	DX004DALS9KA1	4 Fiber, 50/125 MM	470034-97912	DX012DALS9KA1	12 Fiber, 50/125 MM
470034-97918	DX004DALT9KA1	4 Fiber, 10 GIG 50/125 MM	470034-97911	DX012DALT9KA1	12 Fiber, 10 GIG 50/125 MM
470034-97917	DX004DSLX9KA1	4 Fiber, Singlemode	470034-97910	DX012DSLX9KA1	12 Fiber, Singlemode
470034-97916	DX006DWLS9KA1	6 Fiber, 62.5/125 MM	470034-97909	DX024DWLS9KA1	24 Fiber, 62.5/125 MM
470410-98946	DX006DALS9KA1	6 Fiber, 50/125 MM	470034-97908	DX024DALS9KA1	24 Fiber, 50/125 MM
470034-97915	DX006DALT9KA1	6 Fiber, 10 GIG 50/125 MM	470034-97907	DX024DALT9KA1	24 Fiber, 10 GIG 50/125 MM
470034-97914	DX006DSLX9KA1	6 Fiber, Singlemode	470034-97906	DX024DSLX9KA1	24 Fiber, Singlemode

\* Other fiber counts and optical fiber types are available upon request; contact your local CSC Representative. Refer to Optical Fiber Characteristics charts below.

## OPTICAL FIBER CHARACTERISTICS

### Laser Ultra-Fox™ Fiber Performace

Fiber Code	Core/Cladding Diameter (µm)	Wavelength (nm)	Industry-Standard Designation	Gigabit Ethernet Distance (m)	10-Gigabit Ethernet Distance (m)	Maximum Cabled Attenuation (dB/km)	Minimum Laser EMB Bandwidth* (MHz-km)	Minimum OFL LED Bandwidth** (MHz-km)
WLS	62.5/125 Standard	850/1310	OM1 ISO/IEC 11801	300/600	33/300 <sup>^</sup>	3.5/1.5	220/500	200/500
WLX	62.5/125 XL	850/1310	OM1+ ISO/IEC 11801	500/1000	33/300 <sup>^</sup>	3.5/1.5	385/500	200/500
ALS	50/125 Standard	850/1310	OM2 ISO/IEC 11801	600/600	82/300 <sup>^</sup>	3.5/1.5	510/500	500/500
ALX	50/125 XL	850/1310	OM2+ ISO/IEC 11801	750/600	150/300 <sup>^2</sup>	3.0/1.0 <sup>3</sup>	950/500	700/500
ABX	50/125 XL Bend Tolerant	850/1310	OM2+ ISO/IEC 11801	750/600	150/300 <sup>^2</sup>	3.0/1.0 <sup>3</sup>	950/500	700/500
ALT	50/125 (300m 10-GbE)	850/1310	OM3 ISO/IEC 11801	1000/600	300/300 <sup>^2</sup>	3.0/1.0 <sup>3</sup>	2000/500	1500/500
ABT	50/125 (300m 10-GbE) Bend Tolerant	850/1310	OM3 ISO/IEC 11801	1000/600	300/300 <sup>^2</sup>	3.0/1.0 <sup>3</sup>	2000/500	1500/500
ALE	50/125 (550m 10-GbE)	850/1310	OM4 ISO/IEC 11801	1040/600	550/300 <sup>^2</sup>	3.0/1.0 <sup>3</sup>	4700/500	3500/500
ABE	50/125 (550m 10-GbE) Bend Tolerant	850/1310	OM4 ISO/IEC 11801	1040/600	550/300 <sup>^2</sup>	3.0/1.0 <sup>3</sup>	4700/500	3500/500
SLX	9 <sup>6</sup> /125 Low Water Peak Singlemode	1310/1550	ITU-T G.652.D	5 km <sup>4</sup>	10 km <sup>5</sup>	0.5/0.5	—	—
SLA	9 <sup>6</sup> /125 Bend-Tolerant Singlemode	1310/1550	ITU-T G.657.A1 ITU-T G.652.D	5 km <sup>4</sup>	10 km <sup>5</sup>	0.5/0.5	—	—

\* Minimum Laser Effective Modal Bandwidth (EMB)

\*\* For backward compatibility to LED-based systems, overfilled launch (OFL)

<sup>^</sup> 1310 nm CWDM lasers (10GBASE-LX4)

<sup>1</sup> Reach assuming 3.0 dB maximum cabled attenuation at 850 nm and 1.3 dB total connection and splice loss

<sup>2</sup> Supports 220m 10GBASE-LRM distance or 300m 10GBASE-LRM distance with 300m capable equipment

<sup>3</sup> 3.5/1.5 dB/km maximum attenuation applies for DX-Series cables greater than 36 fibers, and for all DX-Series cables with armor (corrugated steel tape or interlocked armor) or any other secondary outer jacketing

<sup>4</sup> 10 km for 1310 nm 1000BASE-LH and 5 km for 1310 nm 1000BASE-LX

<sup>5</sup> 10 km for 1310 nm 10GBASE-LR and 40 km for 1550 nm 10GBASE-ER

<sup>6</sup> Typical Mode Field Diameter at 1310 nm

NOTE: Many other fiber types, fiber bandwidth, and attenuation performances are available; contact your local CSC Representative for ordering information.

### Ultra-Fox™ Plus Fiber Performance

Fiber Code	Core/Cladding/Coating Diameter (µm)	Wavelength (nm)	Industry-Standard Designation	Gigabit Ethernet Distance (m)	10-Gigabit Ethernet Distance (m)	Maximum Cabled Attenuation (dB/km)	Minimum Laser Bandwidth (MHz-km)	Minimum LED Bandwidth (MHz-km)
WST	62.5/125/500	850/1310	OM1 ISO/IEC 11801	275/550	33/300	3.5/1.5	—	200/500
AST	50/125/500	850/1310	OM2 ISO/IEC 11801	550/550	82/300	3.5/1.5	—	500/500
SLS	9/125/500 <sup>1</sup>	1310/1550	ITU-T G.652.A	5 km <sup>2</sup>	10 km <sup>3</sup>	0.5/0.5	—	—

<sup>1</sup> Typical Mode Field Diameter at 1310 nm = 9 microns

<sup>2</sup> 10 km for 1310 nm 1000BASE-LH and 5 km for 1310 nm 1000BASE-LR

<sup>3</sup> 10 km for 1310 nm 10GBASE-LR and 40 km for 1550 nm 10GBASE-ER

NOTE: Other fiber bandwidth and attenuation performances are available. Laser-optimized fiber types available as special order.

Contact your local CSC Representative for ordering information.

# Fiber Optic Cable

## DISTRIBUTION PANELS/ENCLOSURES

### OCC Rack Mount Fiber Optic Cabinets



RTC18A



RTC1UB



RTS24B

- All RTC cabinets are made of 16-gauge steel with powder-coat finish
- Locking options available on all OCC Fiber Optic cabinets
- Accommodates any OCC snap-in adapter plates
- High-density patch and splice features
- Fiber Storage Hoops, Mounting Hardware, and Port Identification included

CSC PART NO.	MFR. PART NO.	DESCRIPTION
470034-02025	RTC18A	Rack Mount Cabinet — 18-Port, Almond*
470034-02034	RTC36A	Rack Mount Cabinet — 36-Port, Almond*
470034-02036	RTC72A	Rack Mount Cabinet — 72-Port, Almond*
470034-02023	RTC144A	Rack Mount Cabinet — 144-Port, Almond*
470034-02079	RTS18B	Rack Mount Cabinet — 18-Port, Sliding Tray, 1 RU, Black
470034-02080	RTS24B	Rack Mount Cabinet — 24-Port, Sliding Tray, 2 RU, Black
470034-02077	RTR12B	Rack Mount Cabinet — 12-Port, High-Density, Recessed, 1 RU, Black
470034-02027	RTC1UB	Rack Mount Cabinet — 18-Port, High-Density, 1 RU, Black, Empty
470034-02028	RTC1UB-24SC	Rack Mount Cabinet — 24-Port, High-Density, 1 RU, SC, Simplex, SM/MM, Black
470034-02031	RTC1UB-48DLC	Rack Mount Cabinet — 48-Port, High-Density, 1 RU, LC, Duplex, SM/MM, Black

\* Also available in Black. Replace "A" with "B" in MFR. PART NO. for Black finish.



RTC72B

### OCC Wall Mount Fiber Optic Cabinets

#### Features

- Constructed of 16-gauge steel with durable powder-coat finish
- Removable hinged door provides easy front access and lockable hasp
- Two-tier fiber storage hoops designed to maintain orderly fiber management
- Lockable inner door is removable and can be used as a work surface by inserting tabs into the slots provided at the bottom frame of cabinet
- All WTC Series enclosures meet NEMA 12 rated requirements

#### Benefits

- Accommodate OCC snap-in adapter plates and cassette modules
- Include port identification sheets
- Include mounting hardware
- Available in almond or black

CSC PART NO.	MFR. PART NO.	DESCRIPTION
470034-02182	WTC12/24A	Wall Mount Cabinet — 12-Port, Almond
470034-02184	WTC12/24A-RT	Wall Mount Cabinet — 12-Port, Almond, Runt Tray
470034-02183	WTC12/24A-PT	Wall Mount Cabinet — 24-Port, Almond, Pup Tray
470034-02190	WTC48A	Wall Mount Cabinet — 48-Port, Almond
470034-02192	WTC72A	Wall Mount Cabinet — 72-Port, Almond
470034-02188	WTC144A	Wall Mount Cabinet — 144-Port, Almond

NOTE: Also available in Black. Replace "A" with "B" in MFR. PART NO. for Black finish.



WTC12/24



WTC72A

# Fiber Optic Cable

## DISTRIBUTION PANELS/ENCLOSURES

### OCC Uncontrolled Environment Fiber Optic Enclosures

- Accommodate OCC snap-in adapter plates and cassette modules
- Lockable hasp ideal for any combination padlock
- Fiber storage hoops designed to maintain orderly fiber management
- Include port identification sheets
- Include mounting hardware



OCC072NX



OCC06N

CSC PART NO.	MFR. PART NO.	DESCRIPTION
470034-01954	OC06N	Wall Mount Cabinet, 6-Port, NEMA 3
470034-01955	OC06NS	Wall Mount Cabinet, 6-Port, Splice Block, NEMA 3
470034-01956	OC012N	Wall Mount Cabinet, 12-Port, NEMA 3
470034-01957	OC012NS	Wall Mount Cabinet, 12-Port, Splice Block, NEMA 3
470034-98800	OC012NX	Wall Mount Cabinet, 12-Port, NEMA 4X
470034-98799	OC012NXSB	Wall Mount Cabinet, 12-Port, Patch/Splice Block, NEMA 4X

CSC PART NO.	MFR. PART NO.	DESCRIPTION
470034-98193	OC012NXS	Wall Mount Cabinet, 12-Port, Patch and Splice, NEMA 4X
470034-98248	OC048NX	Wall Mount Cabinet, 48-Port, NEMA 4X
470034-98806	OC048NXS	Wall Mount Cabinet, 48-Port, Patch and Splice, NEMA 4X
470034-98200	OC072NX	Wall Mount Cabinet, 72-Port, NEMA 4X
470034-98199	OC072NXS	Wall Mount Cabinet, 72-Port, Patch and Splice, NEMA 4X
470410-98949	OC096NX	Wall Mount Cabinet, 96-Port, NEMA 4X
470034-98198	OC096NXS	Wall Mount Cabinet, 96-Port, Patch and Splice, NEMA 4X

### OCC Fiber Optic Snap-In Adapter Plates



600



616DLC



6112SMDLC



616SC50G

CSC PART NO.	MFR. PART NO.	DESCRIPTION
470034-01649	600	Blank Plate
470034-01688	616MMST	6-Port, MM, ST Adapter Plate
470034-01701	616ST	6-Port, Phos-Bronze Sleeve, ST Adapter Plate
470034-01700	616SMST	6-Port, Ceramic Sleeve, ST Adapter Plate
470034-01687	616MMSC	6-Port, MM, SC Adapter Plate
470034-01690	616SC	6-Port, Phos-Bronze Sleeve, SC Adapter Plate
470034-01692	616SC50G	6-Port, MM, 50 Micron 10-Gig, SC Adapter Plate
470034-01699	616SMSC	6-Port, Ceramic Sleeve, SC Adapter Plate
470034-01674	616DLC	6-Port, Phos-Bronze Sleeve, Dual LC Adapter Plate
470034-01675	616DLC50G	6-Port, MM, 50 Micron 10-Gig, Dual LC Adapter Plate
470034-01677	616DSC50G	6-Port, MM, 50 Micron 10-Gig, Dual SC Adapter Plate
470034-01695	616SMDLC	6-Port, Ceramic Sleeve, Dual LC Adapter Plate
470034-01686	616MMRJ	6-Port, MM, MT-RJ Adapter Plate

50 micron laser optimized also available.

CSC PART NO.	MFR. PART NO.	DESCRIPTION
470034-01664	6112MMDST	12-Port, MM, Dual ST Adapter Plate
470034-01657	6112DLC50G	12-Port, MM, 50 Micron 10-Gig, Dual LC Adapter Plate
470034-01660	6112DST	12-Port, Phos-Bronze Sleeve, Dual ST Adapter Plate
470034-01669	6112SMDST	12-Port, Ceramic Sleeve, Dual ST Adapter Plate
470034-01663	6112MMDSC	12-Port, MM, Dual SC Adapter Plate
470034-01658	6112DSC	12-Port, Phos-Bronze Sleeve, Dual SC Adapter Plate
470034-01659	6112DSC50G	12-Port, MM, 50 Micron 10-Gig, Dual SC Adapter Plate
470034-01667	6112SMDSC	12-Port, Ceramic Sleeve, Dual SC Adapter Plate
470034-01656	6112DLC	12-Port, Phos-Bronze Sleeve, Dual LC Adapter Plate
470034-01665	6112SMDLC	12-Port, Ceramic Sleeve, Dual LC Adapter Plate
470034-01662	6112MMDRJ	12-Port, MM, Dual MT-RJ Adapter Plate
470034-01671	6124QLC50G	24-Port, MM, 50 Micron 10-Gig, Quad LC Adapter Plate

## SPLICING

### OCC Fiber Optic Splice Tray Kits

Each kit includes splice tray(s), transition tray(s), tubing, mounting hardware, and accessories for rack mount and wall mount cabinets.

CSC PART NO.	MFR. PART NO.	DESCRIPTION
470034-01997	R12S	Rack Mount Cabinet Fusion Splice Kit — 12 Fiber Capacity
470034-02002	R24S	Rack Mount Cabinet Fusion Splice Kit — 24 Fiber Capacity
470034-02007	R48S	Rack Mount Cabinet Fusion Splice Kit — 48 Fiber Capacity
470034-02010	R72S	Rack Mount Cabinet Fusion Splice Kit — 72 Fiber Capacity
470034-02013	R96S	Rack Mount Cabinet Fusion Splice Kit — 96 Fiber Capacity
470034-01999	R144S	Rack Mount Cabinet Fusion Splice Kit — 144 Fiber Capacity
470034-02172	W48S	Wall Mount Cabinet Fusion Splice Kit — 48 Fiber Capacity
470034-02175	W72S	Wall Mount Cabinet Fusion Splice Kit — 72 Fiber Capacity
470034-02167	W144S	Wall Mount Cabinet Fusion Splice Kit — 144 Fiber Capacity
470034-02170	W288S	Wall Mount Cabinet Fusion Splice Kit — 288 Fiber Capacity







# gocsc.com



**CSC CORPORATE HEADQUARTERS**  
200 East Lies Road  
Carol Stream, IL 60188  
[www.gocsc.com](http://www.gocsc.com)  
[www.wesco.com](http://www.wesco.com)

©2011 Communications Supply Corporation | 47036298962