



- Third Party Verified Category 6A Component Exceeding TIA and ISO Limits
- Exclusive 1-Punch Termination Reduces Termination Time by 75%
- Mating Cycles Exceed Industry Standard by 4 Times
- Green Friendly Bulk Packaging Reduces Excess Waste on the Job

**FEATURES**

- 4.5db min NEXT margin over TIA 568-C.2 component at 500MHz
- 1.5 dB min NEXT margin over ISO 11801 6<sub>A</sub> component requirements
- Supports permanent links: 2-100 Meters
- Enhanced common mode design eliminates residual and reflected NEXT and ANEXT
- Designed and tested for 850mA of continuous current per conductor (1.7A per pair)
- Manufacturing: 100% factory tested
- Universal Wiring (T568A or T568B)
- Center port identification allows for greater visibility of labels on a 48-port patch panel

**SPECIFICATIONS**

- Nose contact material: beryllium copper with precious metal plating with nickel under-plating
- Panel material: 14 ga. steel rolled-edge construction
- 2000+ mating cycles with FCC 8-position plug
- Dimensions and mounting holes per CEA-310-E
- HP6Axx jacks are not compatible with RJ11, RJ14 or RJ25 6-position plugs

**STANDARDS**

- TIA-568-C.2 Category 6A component
- ISO 11801/60603-7 6<sub>A</sub> component
- Third Party tested for TIA 568-C.2 Requirements. Component/Link/Channel
- Category 6A and ISO 11801 Class E<sub>A</sub>
- Application: Third-Party qualified for 10 Gigabit Ethernet Transmission IEEE 802.3an
- Current Capacity: Exceeds current levels for PoE and PoE+ IEEE 802.3at
- Mechanical: Verified to TIA-568-C.2
- UL Listed 1863

HUBBELL **NextSpeed** Ascent Patch Panels  
Category 6A Component



**Performance**

Zero-crosstalk contact structure provides the highest electrical performance while maintaining true balance.

**Installation Aid**

Third hand location pin and hands-free installation.

**Extra Wide IDC Spacing**

Increased space for lacing and routing cable.

**Rigidity**

Rolled edge construction eliminates flex during termination.



**NEXTSPEED®** Ascent Category 6A solution is a tuned system of structured cabling components designed and balanced to work together to deliver bandwidth beyond 625MHz.

**NEXTSPEED®** Ascent Category 6A Panel is third party verified exceeding all TIA and ISO component performance requirements. The well balanced design of the HP6A allows the NEXTSPEED Ascent systems to be utilized in links under 10 meters, which is a perfect solution for the datacenter, providing a fully compliant solution from 2-100 Meters.

Ascent 6A series patch panels provide a rugged, feature rich, solution supporting today's high bandwidth mission critical applications.

Don't jeopardize your network, Hubbell's NextSpeed Ascent 6A solution is the product for the digital world, and provides a migration path for tomorrows emerging network applications.

**APPLICATIONS**

- Data Center
- 10GBASE-T (10-Gigabit Ethernet )
- Consolidation, Server Clustering & Scalable Virtualization
- Mass Data Storage, Storage Area Networks (SAN)
- Web enablement of applications (WEB 2.0)
- Voice Protocol – VoIP, SIP, SCCP, MGCP
- Video Protocol – IPTV, RTSP, RTP



**ORDERING INFORMATION**

**NEXTSPEED® Ascent Category 6A Patch Panel**

Ports	Height	Rack Units	Black Catalog No.	Silver Catalog No.
24	1.75" (45 mm)	1	<b>HP6A24U</b>	<b>HP6A24US</b>
48	3.50" (45 mm)	2	<b>HP6A48U</b>	<b>HP6A48US</b>
96	7.00" (178 mm)	4	<b>HP6A96U</b>	<b>HP6A96US</b>



**RELATED PRODUCT**

**NEXTSPEED® Ascent Category 6A Angled Patch Panel**

Ports	Height	Rack Units	Black Catalog Number
24	1.75" (45 mm)	1	<b>HP6A24AU</b>
48	3.50" (45 mm)	2	<b>HP6A48AU</b>



**ACCESSORIES**

**Rear Cable Management Bars**

Description	Catalog Number
Screws to rear flange of 19" rack	<b>CMBR</b>



**Angled Blank Panels**

Description	Height	Color	Catalog Number
Blank Panel	1U (1.75")	Black	<b>ABP175</b>
	2U (3.50")	Black	<b>ABP350</b>



**NEXTSPEED® Ascent C6A Component Jack**

1 Jack per package      25 Jacks per package

**HJ6AXX      HJ6AXX25**



<b>AL</b> =Almond	<b>BK</b> =Black	<b>B</b> =Blue	<b>EI</b> =Electric Ivory	<b>GL</b> =Gold	<b>GY</b> =Gray	<b>GN</b> =Green	<b>LA</b> =Light Almond
<b>OW</b> =Office White	<b>OR</b> =Orange	<b>P</b> =Purple	<b>R</b> =Red	<b>W</b> =White	<b>Y</b> =Yellow	<b>BN</b> =Brown	

**NEXTSPEED® Ascent Category 6A Cable**

Description	Plenum Spool	Riser Spool
Category 6A UTP Cable	<b>C6ASPXX</b>	<b>C6ASRXX</b>

XX = Cable Color Options

XX = MTO Cable Color Options

<b>B</b> =Blue	<b>GY</b> =Gray	<b>W</b> =White	<b>Y</b> =Yellow	<b>G</b> =Green	<b>OR</b> =Orange
----------------	-----------------	-----------------	------------------	-----------------	-------------------



**NEXTSPEED® Ascent Category 6A Patch Cords**

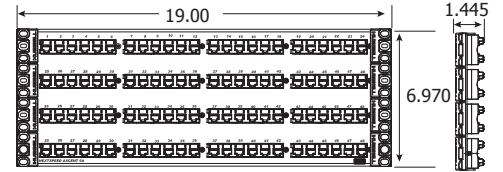
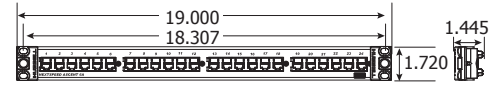
Color	Catalog Number
Gray	<b>HC6AxxXX</b>

xx Standard Colors - **B**=Blue; **GY**=Gray.

XX Standard Lengths - **01**=1'; **03**=3'; **05**=5'; **07**=7'; **10**=10'; **15**=15'; **20**=20'



**DIMENSIONS**



**INTEGRATED SOLUTIONS**



**Cross-Connect Solutions**

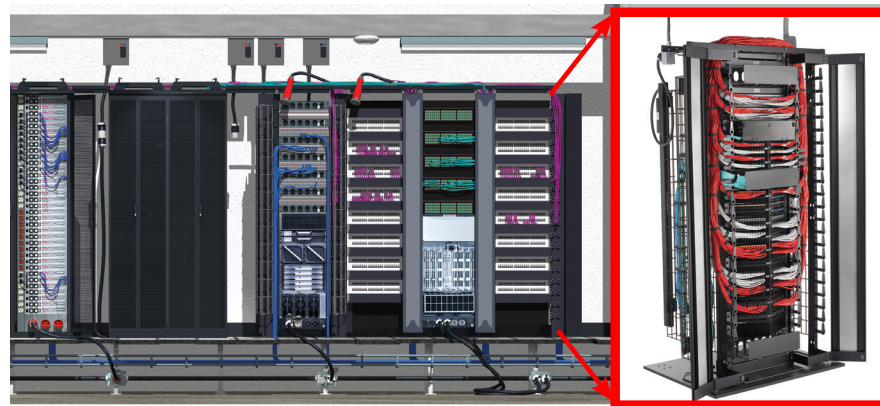
- Data Center Solutions
- XXL Cable Organizers
- NEXTFRAME® Cable Management
- Velcro® Cable Management
- ShieldBond Grounding Systems
- NEXTSPEED Ascent Horizontal Cable
- BIDnet™



**TYPICAL APPLICATION**

Cat 6A - 10 Gigabit Ethernet has become the standard for connecting active gear in data centers.

BIDnet™ Cat 6A assemblies provide simplicity between switches, servers and patch panels



Cat 6A delivers high performance computing (HPC) to the desktop.