

HomeWorks RF Maestro Local Controls

HomeWorks RF Maestro local controls function much like standard dimmers and switches, but can be controlled as part of the whole-house lighting control system. Local lighting controls are useful in locations where single circuits of lighting need to be dimmed or switched. Local fan speed controls are useful in locations where control of a single ceiling paddle fan is needed.

RF Maestro dimmers incorporate advanced features such as fade on/fade off, long fade off, and rapid full on. In addition, the local controls may be programmed similar to a keypad button press with single and double tap functions, turning multiple lights on or off.

RF Maestro local controls include a Front Accessible Service Switch (FASS™) for safe lamp replacement. HomeWorks RF Maestro local controls install in single-pole, 3-way, or 4-way applications.

Model Numbers

Dimmers

Incandescent/Magnetic Low-voltage

HRD-6D-XX 600 W/600 VA Dimmer

HRD-6ND-XX 600 W/600 VA Neutral Dimmer

HRD-10D-XX 1000 W/1000 VA Dimmer

HRD-10ND-XX 1000 W/1000 VA Neutral Dimmer

Electronic Low-voltage

HRD-5NE-XX 500 W Dimmer

Fan Speed Control

Single ceiling paddle fan only

HRD-2ANF-XX 2 A Fan Speed Control

Switch

Lighting and motor loads

HRD-8ANS-XX 8 A Lighting, 5.8 A Motor
Electronic Switch

Accessory Controls

HD-RD-XX Accessory Dimmer

HD-RS-XX Accessory Switch

"XX" in the model number represents color/finish code.

Dimmer



Fan Speed Control



Accessory Dimmer



Switch



Accessory Switch



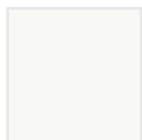
Job Name:

Model Numbers:

Job Number:

Colors and Finishes

Gloss Finishes



White
WH



Ivory
IV



Hot
HT



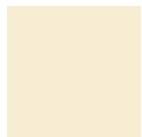
Merlot
MR



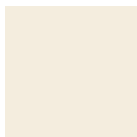
Plum
PL



Turquoise
TQ



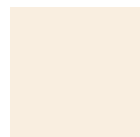
Almond
AL



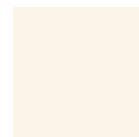
Light
Almond
LA



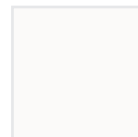
Taupe
TP



Eggshell
ES



Biscuit
BI



Snow
SW



Gray
GR



Brown
BR



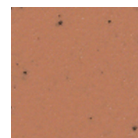
Palladium
PD



Midnight
MN



Sienna
SI



Terracotta
TC



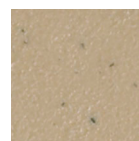
Black
BL



Greenbriar
GB



Bluestone
BG



Mocha
Stone
MS



Goldstone
GS

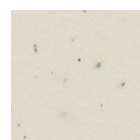
- Due to printing limitations, colors and finishes shown cannot be guaranteed to perfectly match actual product colors.
- Color chip keychains are available for more precise color matching:

Gloss Finishes- CG-CK-1

Satin Finishes - SC-CK-1



Desert Stone
DS



Stone
ST



Limestone
LS

Metal Finish (wallplate only)



Stainless
Steel SS

When using Stainless Steel wallplates, it is recommended to order the controls in Black (BL) or Midnight (MN).

Job Name:

Model Numbers:

Job Number:

Load Type and Capacity

Control	Load Type	Minimum Load	Not Ganged	End of Gang	Middle of Gang	Neutral Connection
HRD-6D ¹	Incand.	50 W	600 W	500 W	400 W	— —
	MLV ²	50 W/VA	450 W/ 600 VA	400 W/ 500 VA	300 W/ 400 VA	
HRD-6ND ^{1,5}	Incand.	10 W	600 W	500 W	400 W	YES
	MLV ²	10 W/VA	450 W/ 600 VA	400 W/ 500 VA	300 W/ 400 VA	
HRD-10D ¹	Incand.	50 W	1000 W	800 W	650 W	—
	MLV ²	50 W/VA	800 W/ 1000 VA	600 W/ 800 VA	500 W/ 650 VA	
HRD-10ND ^{1,5}	Incand.	10 W	1000 W	800 W	650 W	YES
	MLV ²	10 W/VA	800 W/ 1000 VA	600 W/ 800 VA	500 W/ 650 VA	
HRD-5NE	ELV/Incand.	10 W	500 W	450 W	400 W	YES
HRD-8ANS ³	Lighting	10 W	8 A	6.5 A	5 A	YES
	Motor	0.083 A	1/4 HP 5.8 A	5.8 A	5 A	
HRD-2ANF ⁴	Ceiling Fan	0.083 A	2 A	2 A	2 A	YES

¹ Dimmer Load Type: -6D, -6ND, -10D and -10ND are designed for use with permanently installed incandescent, magnetic low-voltage, or tungsten halogen only. Do not install dimmers to control receptacles or motor-operated appliances.

² Low-Voltage Applications: Use -6D, -6ND, -10D and -10ND with magnetic (core and coil) low-voltage transformers only. Not for use with electronic (solid-state) low-voltage transformers. To control electronic low-voltage transformers, use the HRD-5NE control. Operation of a low-voltage circuit with lamps inoperative or removed may result in transformer overheating and premature failure. Lutron strongly recommends the following:

- Do not operate low-voltage circuits without operative lamps in place.
- Replace burned-out lamps as quickly as possible.
- Use transformers that incorporate thermal protection or fused transformer primary windings to prevent transformer failure due to overcurrent.

³ Switch Load Type: -8ANS is designed for use with all permanently installed lighting loads and with motor loads up to 1/4 HP (5.8 A).

⁴ Ceiling Fan Application (HRD-2ANF):

DO:

- Use to control one paddle-type ceiling fan (permanent split-capacitor)*.
- Use the ceiling fan's pull chain to set its speed to the highest setting*.

DO NOT:

- Do not use to control fans that use shaded-pole motors (i.e. bath exhaust fans)*.
- Do not use to control fans that have integrated fan speed controls (i.e. fans that have a remote control), unless the integrated control is removed from the ceiling fan*.
- Do not connect to any other motor-operated appliance or to any lighting load type.
- Do not use to control a fan lighting load (i.e. light kit).

* See Application Note # 217 — "HomeWorks® Maestro® Controls Reference" for more information.

⁵ Can control the following power boosters/load interfaces: Power Booster (NGRX-PB-WH), Electronic Low-Voltage Interface (ELVI-1000), Fluorescent Interface (GRX-FDBI-16A), Hi-Power® Boosters (HP-2, HP-4, HP-6), 0-10 Volt Interface (GRX-TVI), Minimum Load Interface (LUT-LBX).

Job Name:

Model Numbers:

Job Number:

Specifications

Regulatory Approvals

- UL Listed* and CSA Certified*.
- NOM Certified*.
- FCC Approved. Complies with the limits for a Class B digital device, pursuant to Part 15 of the FCC Rules.
- Industry Canada Certified*.

* Pending for HRD-2ANF Fan Speed Control

Power

Operating voltage:
120 V~ 50/60 Hz

Key Design Features

Dimmers

- On a single-tap, lights fade ON or OFF.
- On a double-tap, lights go to full ON.
- When ON, press and hold to engage long fade to OFF.
- Light levels can be fine-tuned by pressing and holding the dimming rocker until the desired light level is reached.
- Two-wire dimmers available.
- Electronic low voltage dimmer available.

Switch

- On a single-tap, lights turn ON or OFF.
- Requires a neutral connection.

Fan Speed Control

- On a single-tap, fan turns ON or OFF.
- Fan speeds can be selected by pressing and holding the speed control rocker until the desired fan speed is reached.
- Controls one paddle-type ceiling fan (permanent split-capacitor motor) up to 2 A. Not for use with shaded-pole type motors (i.e. bath exhaust fans)
- Provides four (4) quiet speeds plus OFF.
- Not for use with fans that have integrated fan speed and/or light control modules.
- Requires a neutral connection.

All RF Local Controls

- Tested to withstand electrostatic discharge without damage or memory loss, in accordance with IEC 61000-4-2.

- Tested to withstand surge voltages without damage or loss of operation, in accordance with IEEE C62.41-1991 Recommended Practice on Surge Voltages in Low-Voltage AC Power Circuits.
- Controls operate locally and do not require system control.
- Power failure memory: should power be interrupted, the control will return to its previously set level prior to the interruption when power is restored.
- Uses conventional 3-way and 4-way wiring.
- Multiple location control from Dimmer/Switch/Fan Speed Control and up to 9 Remote Dimmer(s)/Switch(es).
- Use Lutron® Designer (Claro® or Satin Colors®) wallplates or designer-style wallplates from other manufacturers (it is not recommended to use metal wallplates from other manufacturers, as the RF signal can be reduced). Wallplates are sold separately.
- Lutron *Claro* and *Satin Colors* wallplates snap on with no visible means of attachment.
- Supports color change kits (except -5NE).
- Requires a 1-gang U.S. wallbox. 3½ in (89 mm) deep recommended, 2¼ in (57 mm) deep minimum.

System Communications and Capacity

- RF Local Controls communicate with the *HomeWorks* RF Processor or Hybrid Repeater through radio frequency (RF).
- RF Local Controls must be located within 30 feet (9 m) of an RF Signal Repeater or an RF Processor. Multiple repeaters may be necessary to provide adequate coverage.
- Each *HomeWorks* Processor (RF or with Hybrid Repeater link) is capable of directly controlling up to 64 RF Local Controls.

Environment

- Ambient operating temperature: 32 °F to 104 °F (0 °C to 40 °C), 0%-90% humidity, non-condensing. Indoor use only.

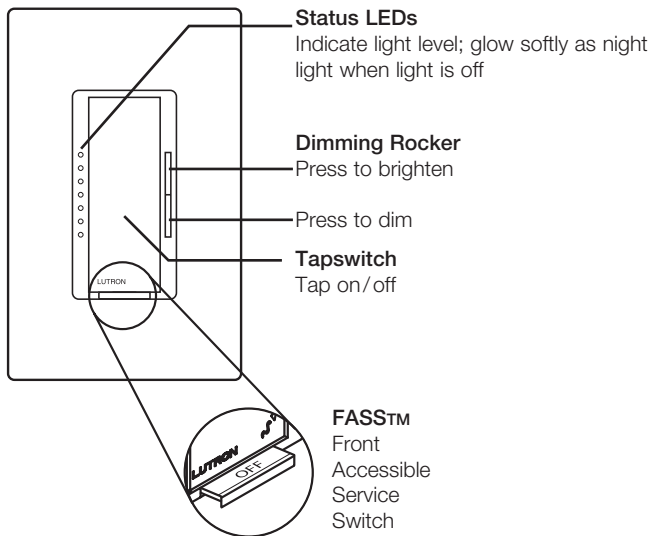
Warranty

- 8 Year Limited Warranty.
Visit <http://www.lutron.com/resiinfo>

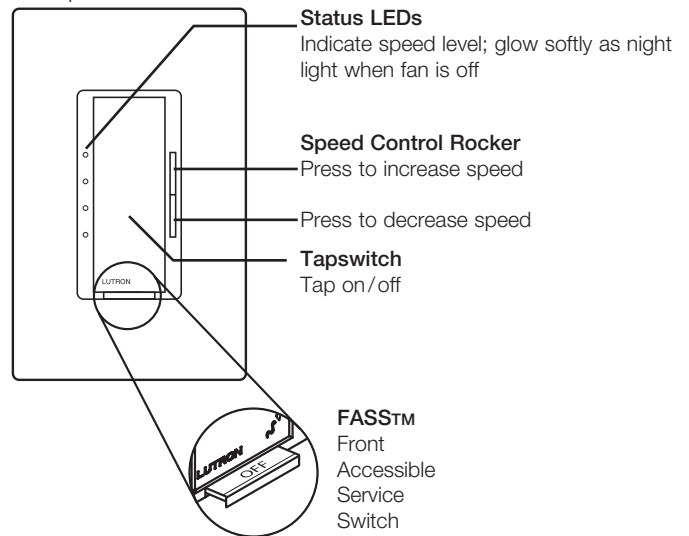
Job Name:	Model Numbers:
Job Number:	

Operation

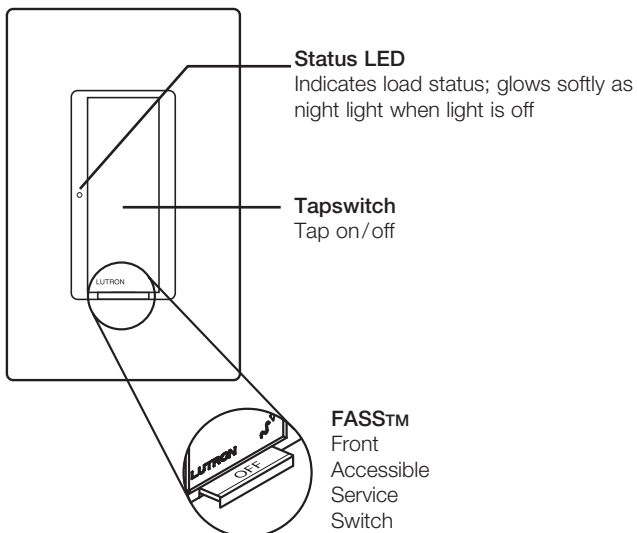
Dimmer



Fan Speed Control



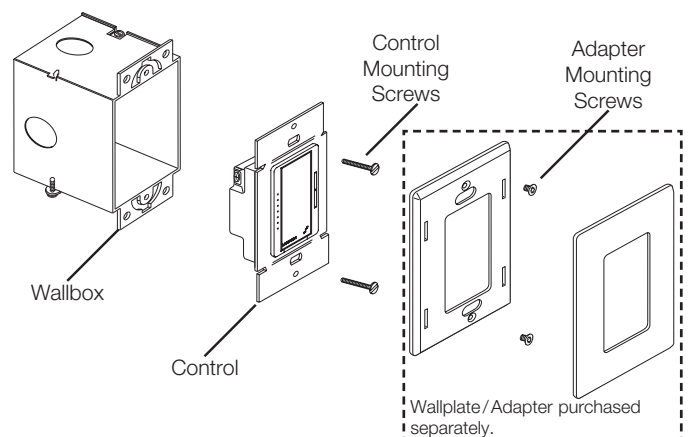
Switch



IMPORTANT NOTICE:

FASS - Front Accessible Service Switch - to replace bulb, remove power by pulling the FASS switch out fully (or slide to the left on the -5NE) on either the Dimmer or Remote Dimmer. After replacing bulb, push the FASS switch back in fully (slide to the right on the -5NE) to restore power to the control.

Mounting



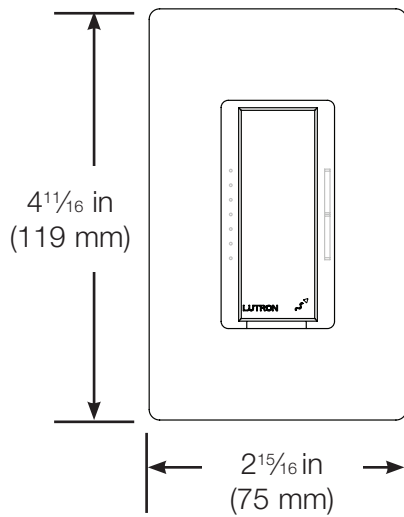
Job Name:

Model Numbers:

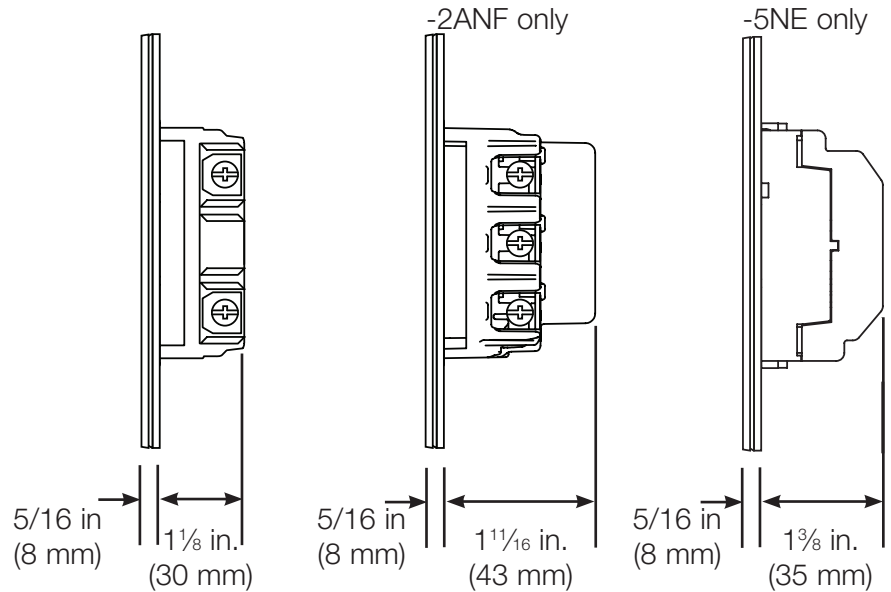
Job Number:

Dimensions

Front View

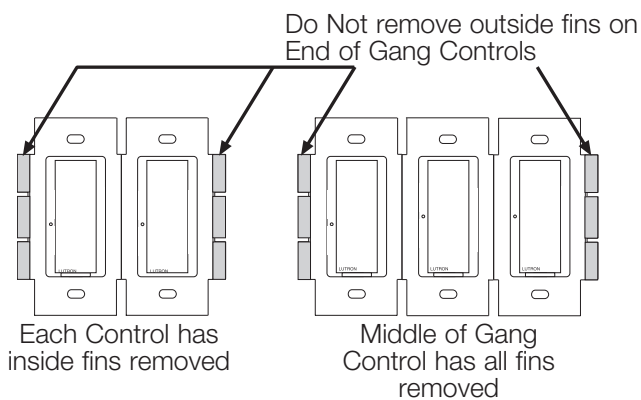


Side View



Ganging and Derating

When ganging with other controls in the same wallbox, derating is required. See Load Type and Capacity chart. Only -8ANS controls have fins that need to be removed for multigang installations. No other controls have fins, but they must still be derated in multigang installations.



Terminal/Wire Color

The HRD-5NE dimmer does not have terminals—it has wires. Refer to the chart below for wire color equivalents when viewing the wiring diagrams for the -5NE.

Terminal Color	-5NE Wire Color
Black	Black
Brass	Yellow
Silver	White
Blue	Blue

Job Name:

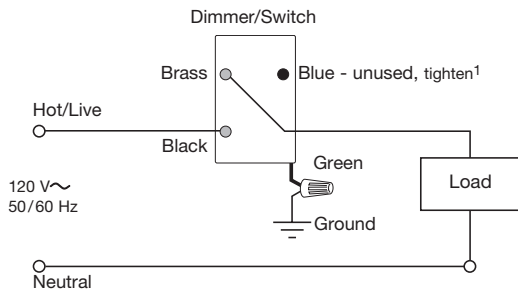
Model Numbers:

Job Number:

Wiring Diagrams

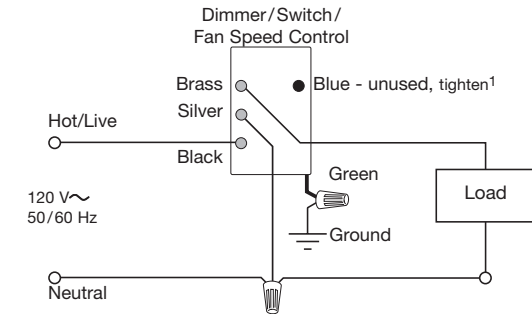
Single Location Installation

-6D, -10D



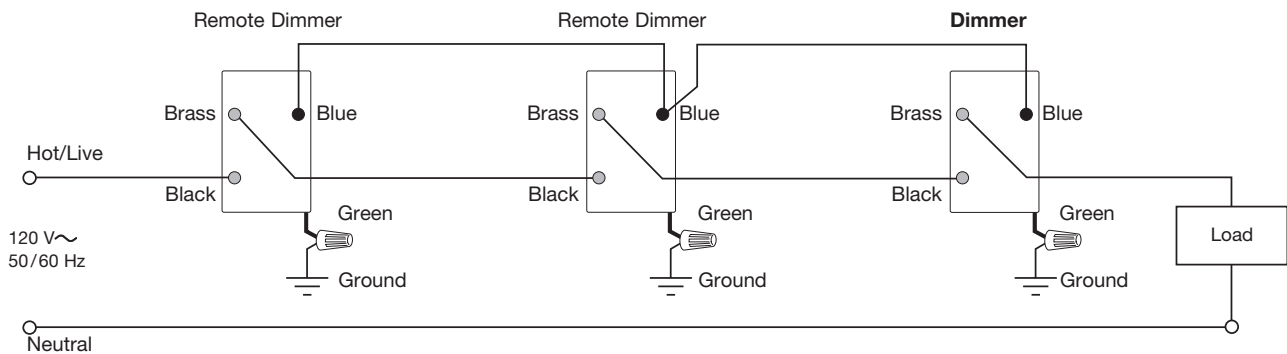
Single Location Installation with Neutral

-6ND, -10ND, -5NE, -8ANS, -2ANF



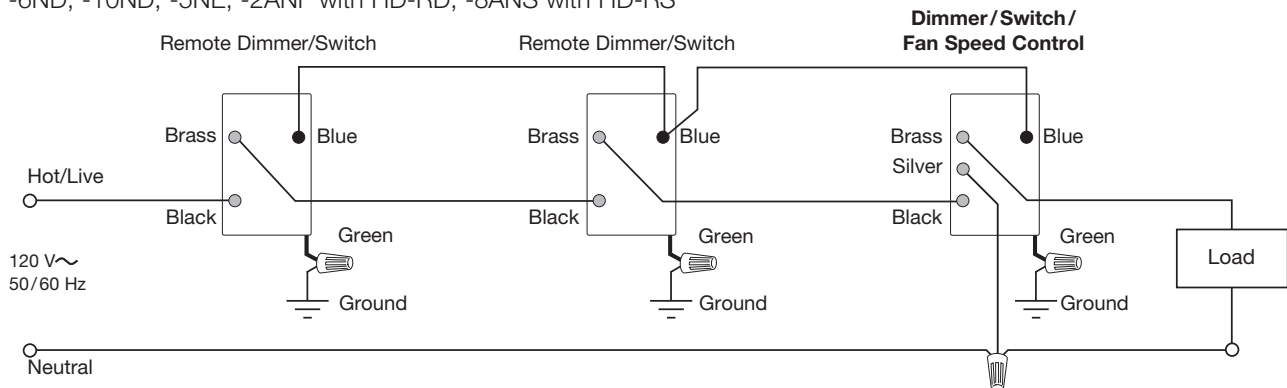
Multi-Location Installation²

-6D, -10D with HD-RD



Multi-Location Installation with Neutral^{2,3}

-6ND, -10ND, -5NE, -2ANF with HD-RD; -8ANS with HD-RS



¹ When using controls in single location installations, tighten the blue terminal. **DO NOT** connect the blue terminal to any other wiring or to ground.

² Up to 9 HomeWorks Maestro Remote Dimmers/Switches may be connected to the HomeWorks RF Maestro Dimmer/Switch/Fan Speed Control. Total blue terminal wire length may be up to 250 ft. (76 m).

³ Neutral wire Dimmers/Switches/Fan Speed Controls must be connected on the Load side of a multi-location installation.

Job Name:

Model Numbers:

Job Number: