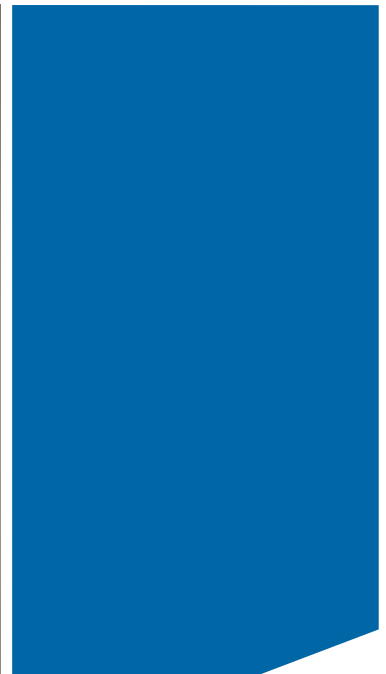




EID Disconnect Assembly

Designed with safety and reliability in mind

 **COOPER** Crouse-Hinds



EID Disconnect Assembly



Introduction

The EID Disconnect Assembly provides an explosionproof disconnect switch assembly for hazardous area electrical systems. This disconnect solution incorporates Cooper Crouse-Hinds' high integrity manufacturing standards for reliability and safety in a compact, space-efficient NEMA 4 enclosure.

FEATURES

- Can be ordered as enclosure only
- NEMA 4X Breather and Drain*
- Small, compact footprint
- Large red painted aluminum rotary handle operator mounted on cover assembly
- Neoprene cover gasket
- Detachable/adjustable mounting feet
- Stainless steel hinges
- (2) Conduit entries, one on top and one on bottom
EIDA—1" NPT entries
EIDB—1 1/2" NPT entries
- (2) 1/2" NPT conduit entries, one on top and one on bottom
- Provides lockout/tagout capability which complies with OSHA requirements
- Complies with NEC Article 312 wire bending requirements for max gauge wire

*when ordered with suffix S756V

BENEFITS

- Allows for field installation of switch while maintaining product certification
- Provides a moisture control solution in hosedown applications
- Less mounting space required
- Provides rugged, reliable performance in the field and allows for the position of the switch to be easily identified from a distance
- Provides UL Type 4 (hose-tight) environmental rating
- Provides flexible mounting alternatives for ease of installation, no need to replace the entire enclosure if a mounting foot is broken
- Easy access to inside enclosure for wiring and maintenance
- For easy top or bottom feed of conductors
- For field addition of breather and/or drain or for use with auxiliary contacts; **holes come plugged with Cooper Crouse-Hinds PLG explosionproof as standard
- Allows for locking in the ON or OFF position for standard maintenance checks
- Allows for easy and safe installation, and reliable operation of product

**for both drains & auxiliary contacts, please contact factory

FINISHES

- Copper-free Aluminum—Natural
- Steel—Electro-galvanized

ELECTRICAL RATINGS

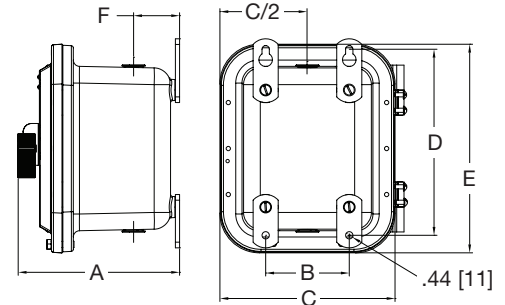
- 600 VAC
- Amperages and Horse Power Ratings

Amp Rating	HP Rating at:				
	200V	208V	240V	480V	600V
30	10	10	10	20	30
60	20	20	20	40	40
100	25	25	30	50	50

WEIGHTS

EIDA	36 lbs	16 kg
EIDB	62 lbs	28 kg

DIMENSIONS



	EIDA	EIDB
A	9.65" 245mm	11.75" 298mm
B	5" 127mm	7" 178mm
C	10.47" 266mm	12.53" 318mm
D	11.13" 283mm	15.13" 384mm
E	12.47" 317mm	16.53" 420mm
F	2.75"	2.75"

CERTIFICATIONS

- Class I, Divisions 1 & 2, Groups B, C, & D
- Class I, Zones 1 & 2
- Class II, Division 1, Groups E, F, & G
- Class III
- Enclosure Type 3, 3R, 4, or 4X*, 7BCD, 9EFG
- UL Standard 886
- cUL to CSA C22.2 No. 30

*when ordered with S752 or S753 suffix

ORDERING INFORMATION

Switch Rating (amps)	Enclosure Only	Enclosure with Switch
30	EIDA	EIDA3030
60	EIDA	EIDA3060
100	EIDB	EIDB3100

OPTIONS

add suffix

Auxiliary Contact (single block)	S784
Auxiliary Contacts (two blocks)	S785
Breather and Drain	S756V
Epoxy Powder Coat Finish (external only)	S752
Epoxy Powder Coat Finish (internal and external)	S753
External Ground Lug	S214

STANDARD MATERIALS

- Body and Cover—Copper-free Aluminum
- Gasket—Neoprene
- Cover Bolts—Steel
- Hinges—Stainless Steel
- Mounting Plate Sheet—Aluminum
- Rotary Actuating Handle—Aluminum

Cooper Crouse-Hinds

PO Box 4999
Syracuse, NY 13221
Toll Free: (866) 764-5454
FAX: (315) 477-5179 FAX Orders Only: (866) 653-0640
crouse.customerctr@cooperindustries.com