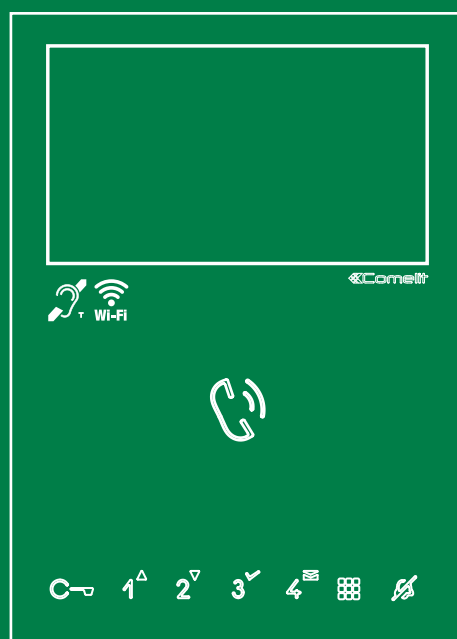
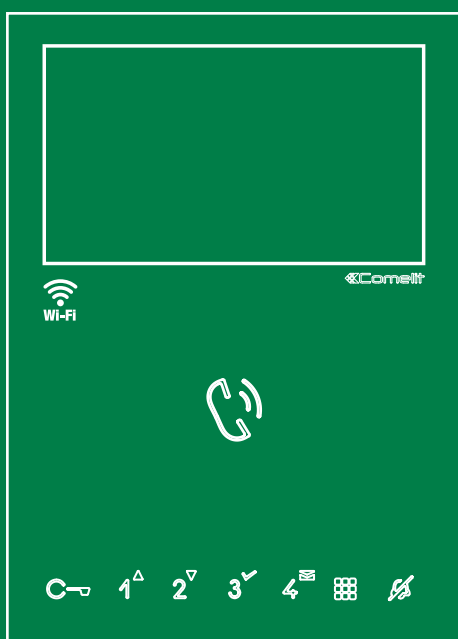


EN

USER
MANUAL



Mini hands-free Wi-Fi monitor
Art. 6741W, Art. 6741W/BM

 **Comelit**[®]
Passion. Technology. Design.

Warning

Intended use

This Comelit product was designed for use in the creation of audio and video communication systems in residential, commercial or industrial settings and in public buildings or buildings used by the public.

Installation

All activities connected to the installation of Comelit products must be carried out by qualified technical personnel, with careful observation of the indications provided in the Manuals / Instruction sheets supplied with those products.

Safe usage

Comelit Group S.p.A. declines any responsibility for improper use of the apparatus, for modifications made by third parties for any reason or purpose, and for the use of accessories and materials which are not originals.

Caution! In order to reduce the risk of faults and electric shocks: do not open the apparatus or carry out any repairs yourself. If necessary, request the services of qualified personnel. Do not insert objects or pour liquids into the device.

Manutenzione

Clean using a damp cloth. Do not use alcohol or other aggressive products.

Any repair work must be carried out

- for the products themselves, exclusively by **Comelit Group S.p.A.**,
- for systems, by qualified technical personnel.

Disclaimer

Comelit Group S.p.A. does not assume any responsibility for

- any usage other than the intended use
- non-observance of the indications and warnings contained in this Manual / Instruction sheet.

Comelit Group S.p.A. nonetheless reserves the right to change the information provided in this Manual / Instruction sheet at any time and without prior notice.

Table of contents

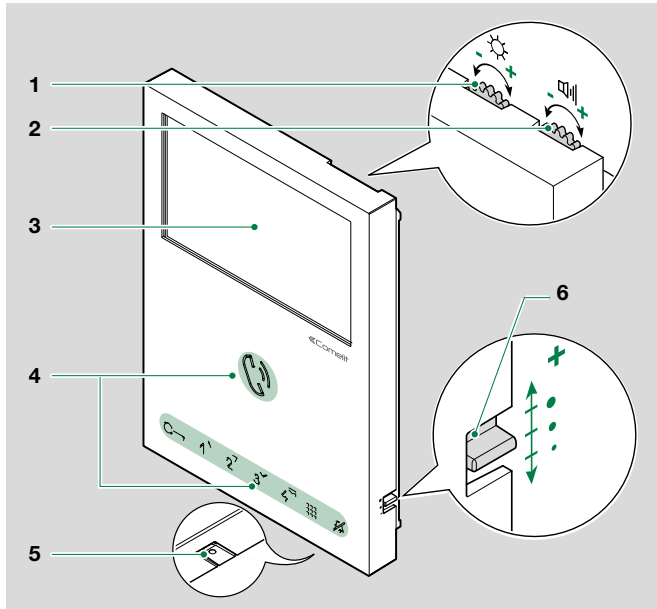
Warning	2
Description.....	3
Key functions.....	3
Significato led.....	3
Navigation mode.....	4
Device functions.....	4
Video memory	4
Video messages	4
Wi-Fi	4
Wi-Fi connection status - Key to symbols.....	4
WiFi setup via the monitor	5
Procedure via WPS.....	5
Manual procedure.....	5
WiFi setup via the COMELIT app.....	5
Setup.....	5
Wi-Fi reporting unconnected	5
App registration enable	5
Date and time settings.....	5
Language	6
Information	6
Reset	6
Update product	6

Description

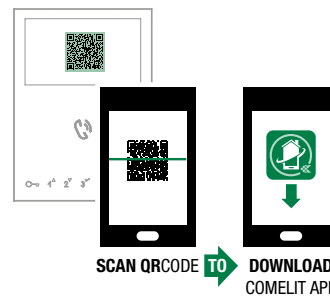
Wi-Fi hands-free monitor Art. 6741W, 6741W/BM can be used in "Building Kit" (exclusively 2-wire), Simplebus Top and Kit Video systems. With 8 touch-sensitive buttons for answering calls, controlling door opening, executing programmed functions (controlling an actuator, carrying out self-ignition, making a switchboard call...) and activating the Privacy function.

Used in conjunction with the COMELIT app, it allows you to answer calls directly from your smartphone/tablet, whether you are at home or away.

Version **6741W/BM** is equipped with a magnetic induction audio amplification system.



1. Brightness control
 - ▶ To increase the value, turn clockwise
2. Loudspeaker volume control
 - ▶ To increase the value, turn clockwise
3. LCD display 4,3" 16:9



4. Soft-touch keys
5. Microphone
6. Call volume adjustment (high - medium - low)

Key functions

- MENU**
SHORT PRESS
- ▶ with display off: the display comes on
 - ▶ on the homepage screen: the display switches off
 - ▶ while navigating the menu: return to previous screen

- AUDIO**
- ▶ **PRESS AND RELEASE:** answer/end a call
 - ✓ Incoming call:
 - ▶ Press to start the conversation
 - ▶ Press again to interrupt the conversation
 - ▶ **PRESS AND HOLD (5s):** enables/disables the Hands Free function (on receipt of a call the device will respond automatically)

- LOCK-RELEASE**
 Opens the corresponding door lock
- ▶ **SHORT PRESS:** door opening

- 1234** **PROGRAMMABLE KEYS**
- ▶ **PRESS AND RELEASE (with display off):** carry out the programmed function
 - ▶ **PRESS AND HOLD (5s):**
 - activate/deactivate the programmed doctor function (automatic door opening) (default key 4)
 - activate/deactivate the programmed self-ignition function (default key 2)

- ARROWS FOR SCROLLING THROUGH MENUS**
- ▶ **PRESS AND RELEASE** while navigating the menu: up, down, right and left.

- CONFIRM SELECTION**
- ▶ **PRESS AND RELEASE:** confirm a selection, select / deselect an option.


- MESSAGE MENU**
- ▶ **PRESS AND RELEASE with monitor on:** quick access to the video messages section.

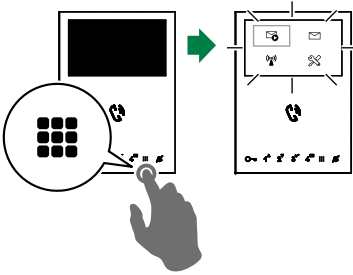
- PRIVACY**
- ▶ **PRESS AND RELEASE:** activate/deactivate the Privacy function to exclude the ringer in response to a call from an external unit and from the porter switchboard


Significato led

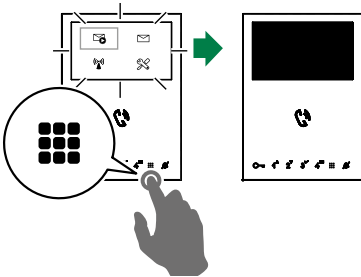
- FLASHING LED: user notification present
- STEADY LED: conversation in progress and/or Hands Free function activated
 FLASHING LED: incoming call
- STEADY LED: door open confirmed
 FLASHING LED: door open or incoming call from the external unit
- 4 FLASHES: the device called is busy
 3 FLASHES EVERY 5 SEC. = Doctor function activated
 STEADY LED: Privacy function active (Ringtone in silent mode)
 STEADY AND FLASHING LED: Doctor and Privacy active.



Navigation mode

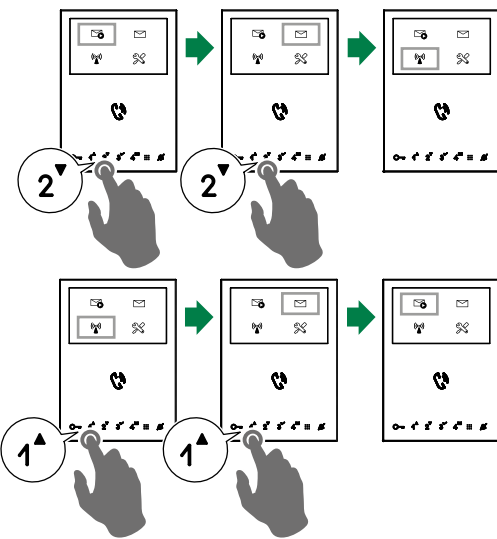
- ▶ With the monitor in standby, press  to switch on the display





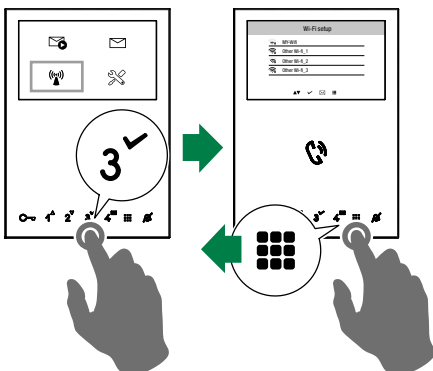
- ▶ Press  to turn off the display



- ▶ Navigate the menu using the  and  keys



- ▶ Press  to confirm a selection
- ▶ Press  to return to the previous screen

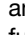


Device functions

Video memory

This function automatically starts audio/video recording in the event of no reply.

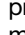


- ▶ Scroll through the menu to the icon and press  to confirm and enable the function
 - » The blue icon indicates that the function is active.

Video messages

The function allows you to view the video messages stored in the memory



- ▶ Scroll through the menu to the icon and press  to confirm and access the video memory submenu
 - » The blue icon indicates that there is at least one video message that has not yet been viewed.

Wi-Fi

The icon in the main menu offers access to the Wi-Fi connection settings for the device while indicating its connection status.

Wi-Fi connection status - Key to symbols



Access point

If the system requires wireless connection of the monitor, link the device with the local router.



Connection absent:

Monitor Wi-Fi reception is enabled, therefore you need to check the router conditions (on/off, correct operation, distance from the monitor, correct password).



Router connected, no internet

Check with your internet provider..

Signal strength:



Excellent



Good



Moderate



Weak

WiFi setup via the monitor

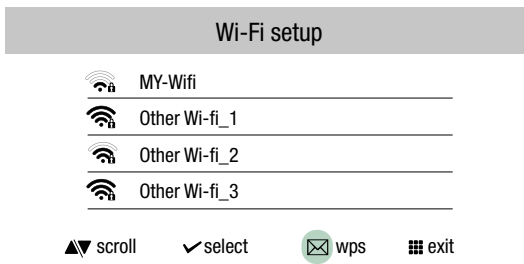


- ▶ Scroll through the menu to the Wi-Fi icon and press ✓ to confirm and access the Wi-Fi connection setup
 - » *the monitor will scan available networks*

We recommend linking the monitor to your router by means of the WPS button. If the router does not have a WPS button, proceed manually

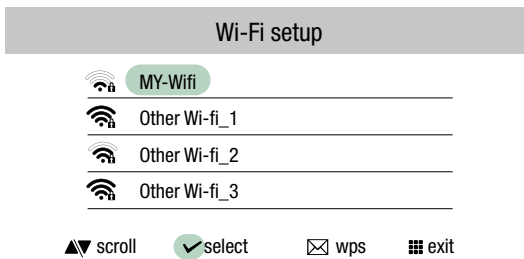
Procedure via WPS

Once the networks have been scanned, press for secure linking via WPS and follow the instructions which appear on the display.

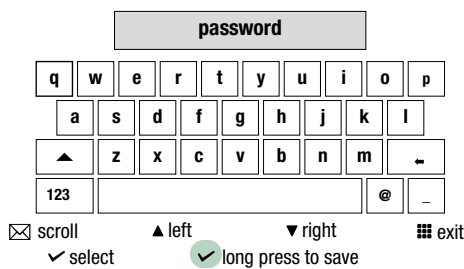


Manual procedure

1. If the router does not have a WPS button, select your network and confirm by pressing ✓



2. Enter the password manually and press and hold ✓ to confirm



Install the COMELIT application on your smartphone to ensure you have all the device functions at your disposal.

Instructions at pro.comelitgroup.com > 6741W > User manual for Comelit Application.

WiFi setup via the COMELIT app

Setup can also be carried out from your smartphone via the app.

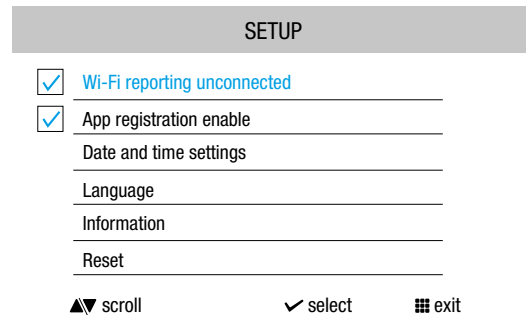
Refer to the dedicated section on the website pro.comelitgroup.com > 6741W > Smart registration.

Setup

This section allows you to configure the device (language, date and time...)



- ▶ Scroll through the menu to the Setup icon and press ✓ to confirm and access the device setup



Wi-Fi reporting unconnected

The monitor provides *pop-up* notification in the event that there is no Wi-Fi connection between the monitor and the router.

The lack of Wi-Fi connection will prevent calls from being received on a smartphone (and, in some types of system, on the monitor too) and cancels all main functions that can be controlled via the app.

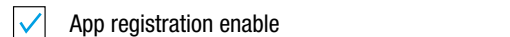
- ▶ Select/deselect the function to enable/disable the pop-up notification



App registration enable

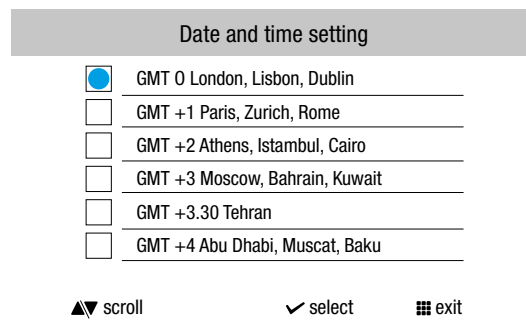
Permits a new user register his/her own smartphone in order to gain access to monitor functions, or prohibits him/her from doing so.

- ▶ Select/deselect the function to enable/disable App registration



Date and time settings

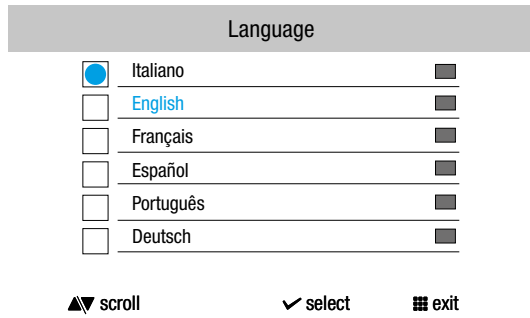
Allows setting of the device date and time, by selecting your GMT time difference




- ▶ Navigate to the desired option, then confirm the selection ✓ or exit

Language

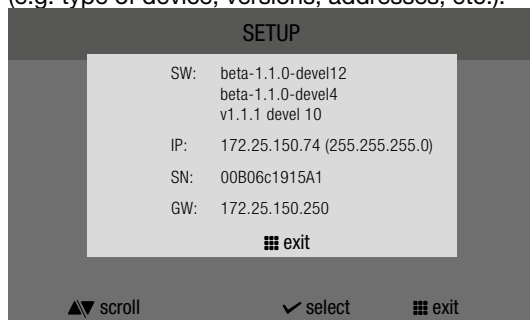
Used to set the device language.




- ▶ Navigate to the desired option, then confirm the selection
✓ or exit 

Information

This menu provides technical information about the device (e.g. type of device, versions, addresses, etc.).

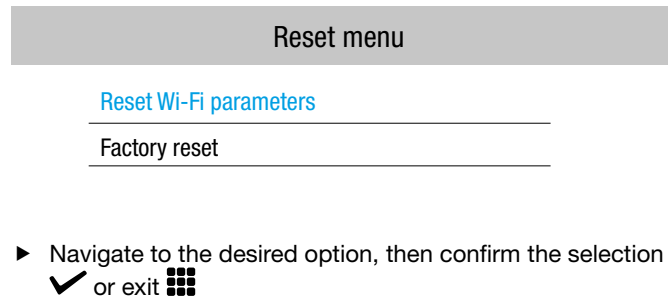


- ▶ Press  to exit the screen

Reset

The menu can be used to:

- **reset the Wi-Fi parameters** by returning the device to access point mode
- **restore the factory settings of the device** by deleting the user and system configurations.



Update product

Select the option **“Update product”** to install the latest SW version available.

CERTIFIED MANAGEMENT SYSTEMS



www.comelitgroup.com

Via Don Arrigoni, 5 - 24020 Rovetta (BG) - Italy

1st edition 02/2018
cod. 2G40002041