

WB^T LLC

WB^T

SHAPING THE FUTURE
CABLE MANAGEMENT SYSTEMS

PERFORMANCE CABLETRAY

WBT offers the best in cable management products to the market today. WBT is comprised of industry leaders who have worked for years introducing and refining the market and products here in the U.S. We hold patents on many of the 'best' ideas and solutions that you may purchase from multiple vendors today.

WBT's premise is simple: a higher quality 'PERFORMANCE' cabletray, 100% manufactured in the U.S., utilizing 100% domestic recycled steel, with minimized environmental impact finishes. WBT offers better cabling support, LEED submittal documentation, USGBC support, better leadtimes and unparalleled customer service.

WBT's products are a mix of the best new concepts and ideas, designed and created with a sole purpose, to provide the BEST in mesh cabletray, while supporting you and your customers with the most innovative and creative products in the market, period. Manufactured in our state of the art, newly expanded facility with proprietary custom machinery, the days of long leadtimes, poor quality and offshore products are over.

Welcome to WBT, where we are shaping the future of cabletray. Browse through our catalog and see the results of almost 45 years of combined mesh experience, new ideas and fresh approaches to your needs.



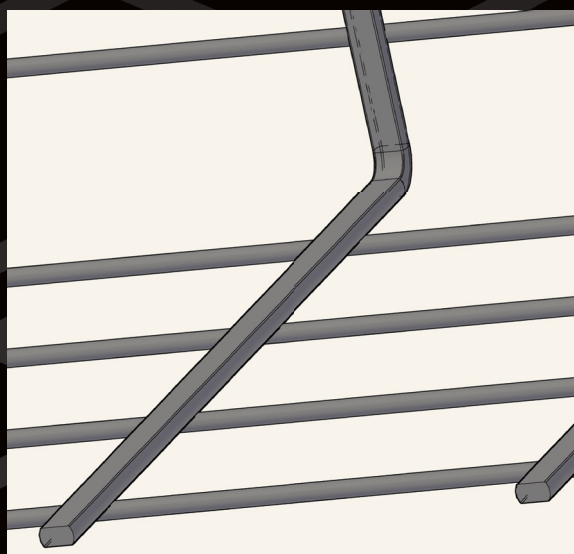
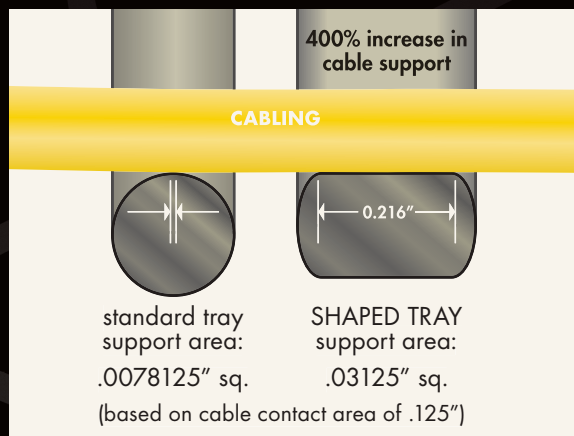
SHAPING THE FUTURE

All wire tray manufacturers utilize round wire in the construction of their straight sections, round wire on the linewires and crosswires. This has not changed since mesh tray was introduced. The problem is that high performance cabling installed in the tray today has evolved several generations.

A round crosswire supporting a round cable offers very little surface area support. When you add additional cables, the weight creates a pressure point/strain on the cables within the tray. What WBT has pioneered is a design utilizing shaped crosswires, which increases the support of your critical cabling.

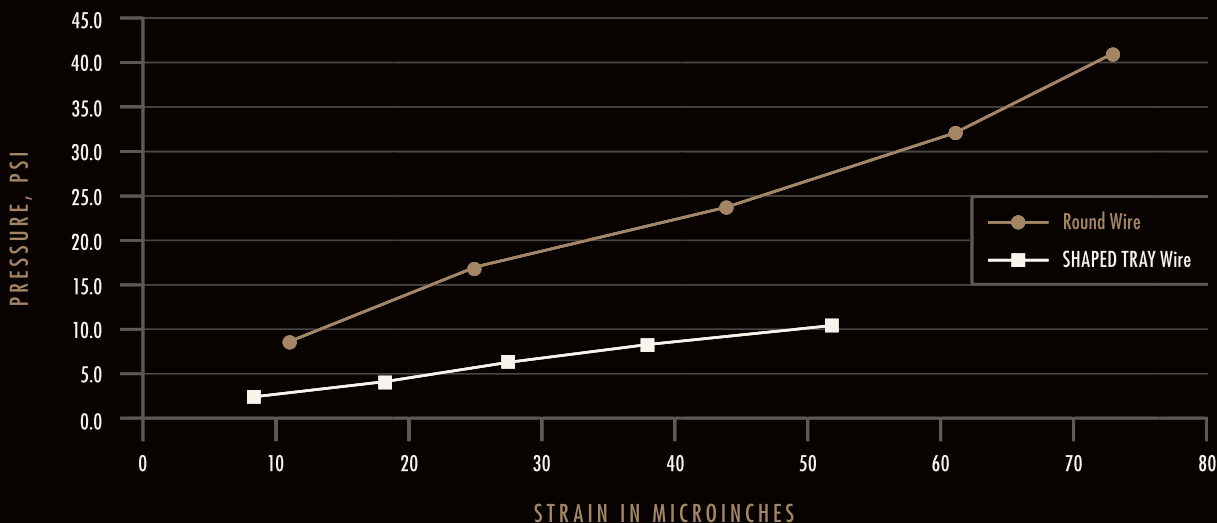
A medium sized 6x12 tray holds over a thousand cables. The cables installed at the bottom of the pathway support the weight of several hundred sitting on top. The glass/copper conductors are subjected to tremendous loading and pressure points every 4" on the apex of a round wire (outlined right). WBT's shaped crosswires eliminate cable stress by increasing the support of the cabling, yet still offers the same functionality of wire tray to cut and configure, and utilizes the same splicing and mounting hardware.

WBT also offers the full round wire configuration if preferred, or for industrial/electrical applications where performance is not an issue, or where inserts are being utilized.



Our Shaped Wire offers:

- A Minimum 400+% Increase in Cabling Support
- Up To 68% Reduction in Cabling Pressure/Strain*
- Cuts, Configures and Splices the Same
- No Premium over Competitors 'Old Round Crosswire'
- 100% Domestic Recycled Content



* Please contact WBT for our independent study testing round versus WBT's shaped wire constructions.



THE WBT DIFFERENCE



A TRULY GREEN OFFERING

With today's emphasis on LEED Certifications and materials sustainability, only WBT can offer Green product solutions that not only match customer goals, but offer the potential for submittal on LEED installations.

WBT utilizes 100% recycled steel in the manufacture of our tray sections. Throughout our manufacturing processes, we can document that the tray we deliver is born from recycled content.

In addition, today's manufacturers have standardized on post zinc plating on tray sections. This involves a chemical cleaning and stripping process, followed by a series of heavy metal dipping vats to adhere the zinc to the steel. It is not environmentally friendly, with the fumes and disposal of the chemicals and metals (the EPA is growing ever stricter on the handling and disposal of these chemicals/metals). WBT offers a mill PreGalv, which holds up as well for indoor applications as the post zinc plate, and avoids the secondary chemical processing. We mechanically clean each piece after fabrication to remove any oils or soot from the welding process. It looks like the zinc plate, but is better for the environment.



WBT GREEN POINTS:

- Utilizing 100% recycled steel content in the manufacturing of our trays
- MillCerts are available to document recycled content for possible LEED credits/certification
- No post production chemical cleaning and plating (a huge environmental impact)
- WBT utilizes kraft packaging (no bleaching white). Packaging and strapping are recyclable
- Catalog is printed on recycled paper with soy based inks
- WBT plant operation and policies utilize solar and other minimal environmental impact policies

LEED REGISTRATION?

Check with WBT for Project Submittal documents.

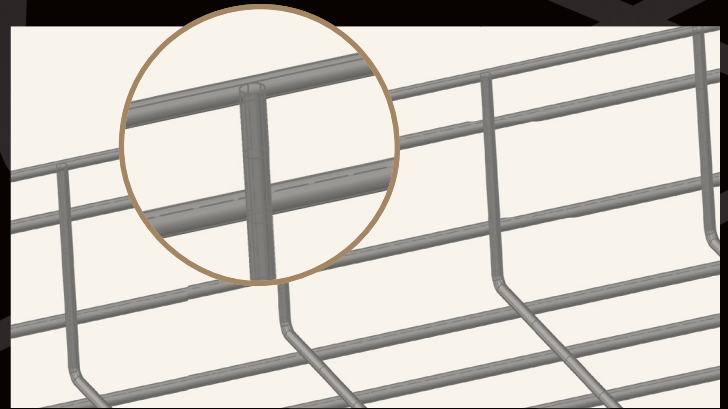
UL CLASSIFIED PAINTED TRAY

If you prefer a painted tray, with most manufacturers you need to remove the paint at the splicing points to complete an electrical ground (for UL and CUL classifications). All of WBT's tray sections are UL Classified when they leave the factory. There is no labor and time in field removal of the paint. Simply splice the trays as you would any Galvanized sections, and you're compliant.

WBT offers both black and pewter as standard colors. Other custom colors are available with minimal leadtimes.

T-WELD ON ALL TRAY CONFIGURATIONS

WBT provides a T-Weld edgewire on all of its tray configurations. This product design provides protection for both the installer and the cabling from any sharp points within the tray.



DESIGN SERVICE AND INSTALLATION HELP






WBT is available to work with you on product selection, installation questions and to provide a BOM list from your drawings. No charge, no problems.

WBT^{LLC}

TRAY FINISHES

WBT trays are available in a wide variety of finishes to meet the environmental or aesthetic requirements of your installations. Use the chart below to find the finish suffix that will meet your needs.

Finish codes: WBT2x4 BL = Tray Depth x Width x Finish
 Notate finish code when ordering trays and fittings.

Suffix	Finish	Specifications	Use	UL/cUL
no suffix required	Pre-Galvanized Finish applied before fabrication	ASTM A641	Limited industrial & interior applications recommended	 on sizes below when spliced as recommended
PW	Pewter Powder Coated Finish applied after fabrication	N/A	Controlled interior applications	 on sizes below when spliced as recommended
BL	Black Powder Coated Finish applied after fabrication	N/A	Controlled interior applications	 on sizes below when spliced as recommended
CPC	Custom Powder Coated Finish applied after fabrication	N/A	Controlled interior applications	 on sizes below when spliced as recommended
304L & 316S	304L Stainless Steel & 316S Stainless Steel	ASTM A580	Food preparation, wash-down areas, highly corrosive applications & marine environments	 on sizes below when spliced as recommended

WBT offers Electro-Zinc Plated material that is UL Classified as well as cUL Classified

UL CLASSIFIED & cUL LISTED ON PAINTED TRAY

WBT offers painted tray that is UL Classified and cUL Classified as an equipment ground conductor. No field removal of the paint is required.



2" depth	4" depth	6" depth	8" depth	
WBT2x6/S	WBT4x6/S	WBT6x8/S	WBT8x8/S	
WBT2x8/S	WBT4x8/S	WBT6x12/S	WBT8x12/S	
WBT2x12/S	WBT4x12/S	WBT6x16/S	WBT8x16/S	
WBT2x16/S	WBT4x16/S	WBT6x18/S	WBT8x18/S	
WBT2x18/S	WBT4x18/S	WBT6x20/S	WBT8x20/S	
WBT2x20/S	WBT4x20/S	WBT6x22/S		
WBT2x24/S	WBT4x24/S	WBT6x24/S		

/S denotes the part number for shaped.

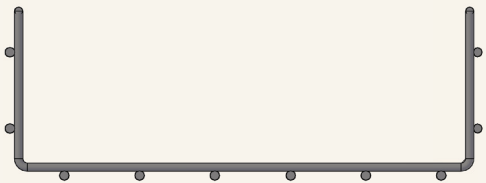
2" DEEP TRAY



PART NUMBER	PART NUMBER	WIDTH	WT. per pc.	FILL*	LOAD lbs/ft	SPLICE quantity
WBT2X4	WBT2X4S	4"	7 lbs	108	45	2
WBT2X6	WBT2X6S	6"	9 lbs	163	50	4
WBT2X8	WBT2X8S	8"	10.5 lbs	218	52	4
WBT2X12	WBT2X12S	12"	12 lbs	326	58	4
WBT2X16	WBT2X16S	16"	15 lbs	439	70	4
WBT2X18	WBT2X18S	18"	23 lbs	495	70	4
WBT2X20	WBT2X20S	20"	25 lbs	550	73	5
WBT2X22	WBT2X22S	22"	27 lbs	600	73	5
WBT2X24	WBT2X24S	24"	31 lbs	660	75	5
WBT2X26	WBT2X26S	26"	33 lbs	671	73	6
WBT2X28	WBT2X28S	28"	35 lbs	723	73	6
WBT2X30	WBT2X30S	30"	38 lbs	826	70	6
WBT2X32	WBT2X32S	32"	39 lbs	881	70	6

S denotes the part number for shaped.

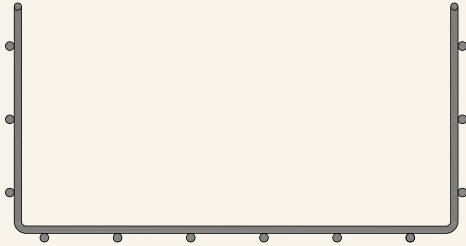
4" DEEP TRAY



PART NUMBER	PART NUMBER	WIDTH	WT. per pc.	FILL*	LOAD lbs/ft	SPLICE quantity
WBT4X4	WBT4X4S	4"	12 lbs	205	49	4
WBT4X6	WBT4X6S	6"	13 lbs	310	49	5
WBT4X8	WBT4X8S	8"	15 lbs	416	78	6
WBT4X12	WBT4X12S	12"	23 lbs	621	78	6
WBT4X16	WBT4X16S	16"	27 lbs	837	108	7
WBT4X18	WBT4X18S	18"	29 lbs	942	116	7
WBT4X20	WBT4X20S	20"	31 lbs	1047	116	7
WBT4X22	WBT4X22S	22"	33 lbs	1152	116	8
WBT4X24	WBT4X24S	24"	35 lbs	1257	116	8
WBT4X28	WBT4X28S	28"	39 lbs	1460	108	9

S denotes the part number for shaped.

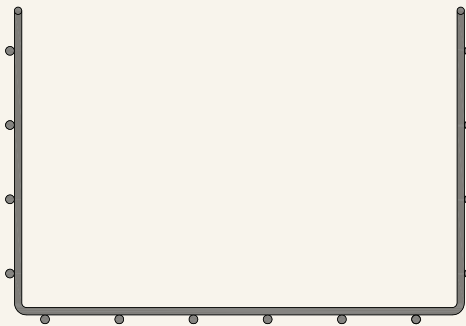
6" DEEP TRAY



PART NUMBER	PART NUMBER	WIDTH	WT. per pc.	FILL*	LOAD lbs/ft	SPLICE quantity
WBT6X8	WBT6X8S	8"	23 lbs	623	116	6
WBT6X12	WBT6X12S	12"	27 lbs	931	123	6
WBT6X16	WBT6X16S	16"	31 lbs	1255	123	7
WBT6X18	WBT6X18S	18"	33 lbs	1413	127	7
WBT6X20	WBT6X20S	20"	35 lbs	1571	127	7
WBT6X22	WBT6X22S	22"	37 lbs	1728	127	8
WBT6X24	WBT6X24S	24"	39 lbs	1886	150	8

S denotes the part number for shaped.

8" DEEP TRAY



PART NUMBER	PART NUMBER	WIDTH	WT. per pc.	FILL*	LOAD lbs/ft	SPLICE quantity
WBT8X8S	WBT8X8S	8"	27 lbs	835	116	8
WBT8X12S	WBT8X12S	12"	31 lbs	1256	116	8
WBT8X16S	WBT8X16S	16"	35 lbs	1677	116	9
WBT8X18S	WBT8X18S	18"	37 lbs	1887	116	9
WBT8X20S	WBT8X20S	20"	39 lbs	2098	116	9

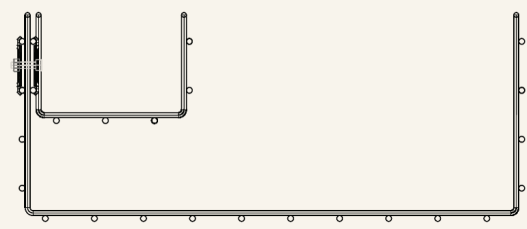
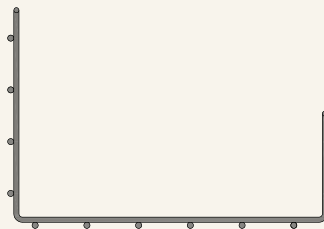
S denotes the part number for shaped.

STANDARD FINISH:  | AVAILABLE IN FINISHES: **BL**, **PW**, **CPC**

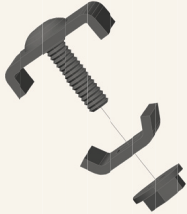
*fill is a theoretical calculation based on a .19" diameter cable

CUSTOM TRAY

WBT can fabricate various custom configurations. Please contact the factory for details.



SPLICE KIT



PART NUMBER	DESCRIPTION	WT. per box	QUANTITY per box
SPLICE KIT	3 piece staked bolt/washer and nut combination used to splice straight sections and fittings.	5 lbs	50 sets

STANDARD FINISH: ZINC PLATED | AVAILABLE IN FINISH: **BL**

WASHER SUPPORT



PART NUMBER	DESCRIPTION	WT. per box	QUANTITY per box
WASHER SUPPORT	2" square washer that can be used to splice straight sections and fittings. This part can also be used as a hold down method.	6 lbs	50 each

STANDARD FINISH: ZINC PLATED | AVAILABLE IN FINISHES: **BL, PW, CPC**

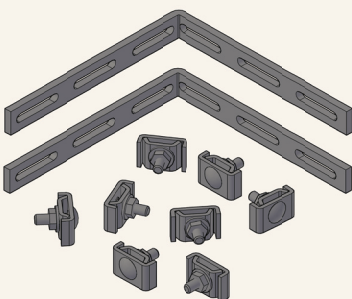
BAR SPLICE



PART NUMBER	DESCRIPTION	WT. per box	QUANTITY per box
BAR SPLICE	Slotted bar 11-15/16" long used to splice straight sections and fittings.	14 lbs	50 each

STANDARD FINISH: ZINC PLATED | AVAILABLE IN FINISHES: **BL, PW, CPC**

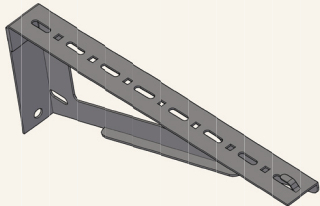
CORNER SPLICE



PART NUMBER	DESCRIPTION	WT. per box	QUANTITY per box
CORNER SPLICE	Kit used to splice fittings. Each kit includes two 90 degree splice bars and 8 sets of the splice kit.	1 lbs	1 kit

STANDARD FINISH: ZINC PLATED | AVAILABLE IN FINISH: **BL**

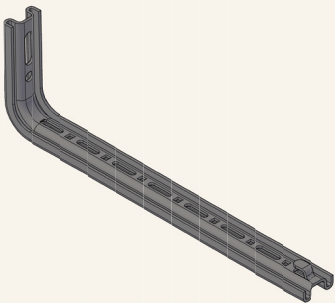
SHELF SUPPORT




PART NUMBER	DESCRIPTION	WT. per pc.	QUANTITY per box
SHELF SUPT 4	Shelf/Wall support for 4" wide tray.	0.4 lbs	1 each
SHELF SUPT 6	Shelf/Wall support for 6" wide tray.	0.5 lbs	1 each
SHELF SUPT 8	Shelf/Wall support for 8" wide tray.	0.6 lbs	1 each
SHELF SUPT 12	Shelf/Wall support for 12" wide tray.	1.2 lbs	1 each
SHELF SUPT 16	Shelf/Wall support for 16" wide tray.	1.7 lbs	1 each
SHELF SUPT 18	Shelf/Wall support for 18" wide tray.	1.9 lbs	1 each
SHELF SUPT 20	Shelf/Wall support for 20" wide tray.	2.6 lbs	1 each
SHELF SUPT 24	Shelf/Wall support for 24" wide tray.	3.2 lbs	1 each

STANDARD FINISH: ZINC PLATED | AVAILABLE IN FINISHES: **BL**, **PW**, **CPC**

L BRACKET




PART NUMBER	DESCRIPTION	WT. per pc.	QUANTITY per box
L BRACKET 4	Wall L bracket for 4" wide tray.	0.7 lbs	1 each
L BRACKET 6	Wall L bracket for 6" wide tray.	0.8 lbs	1 each
L BRACKET 8	Wall L bracket for 8" wide tray.	0.9 lbs	1 each
L BRACKET 12	Wall L bracket for 12" wide tray.	1.4 lbs	1 each
L BRACKET 16	Wall L bracket for 16" wide tray.	1.5 lbs	1 each
L BRACKET 18	Wall L bracket for 18" wide tray.	1.7 lbs	1 each
L BRACKET 20	Wall L bracket for 20" wide tray.	2.1 lbs	1 each
L BRACKET 24	Wall L bracket for 24" wide tray.	2.3 lbs	1 each

STANDARD FINISH:  | AVAILABLE IN FINISHES: **BL**, **PW**, **CPC**

C BRACKET



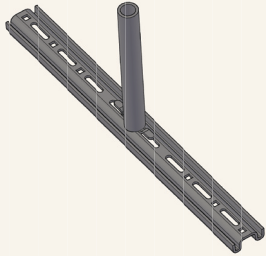
PART NUMBER	DESCRIPTION	WT. per pc.	QUANTITY per box
C BRACKET 4	Wall/Ceiling C bracket for 4" wide tray.	1.2 lbs	1 each
C BRACKET 8	Wall/Ceiling C bracket for 8" wide tray.	1.5 lbs	1 each
C BRACKET 12	Wall/Ceiling C bracket for 12" wide tray.	2 lbs	1 each
C BRACKET 18	Wall/Ceiling C bracket for 18" wide tray.	2.7 lbs	1 each

STANDARD FINISH:  | AVAILABLE IN FINISHES: **BL**, **PW**, **CPC**



= PRE-GALVANIZED FINISH

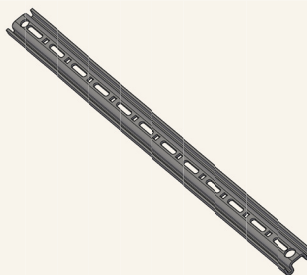
CENTER SUPPORTS



PART NUMBER	DESCRIPTION	WT. per pc.	QUANTITY per box
CENTER SUPT 4	Center Support for 4" wide tray.	1.6 lbs	1 each
CENTER SUPT 6	Center Support for 6" wide tray.	1.8 lbs	1 each
CENTER SUPT 8	Center Support for 8" wide tray.	2 lbs	1 each
CENTER SUPT 12	Center Support for 12" wide tray.	2.7 lbs	1 each
CENTER SUPT 16	Center Support for 16" wide tray.	3.3 lbs	1 each
CENTER SUPT 18	Center Support for 18" wide tray.	3.4 lbs	1 each
CENTER SUPT 20	Center Support for 20" wide tray.	3.8 lbs	1 each
CENTER SUPT 24	Center Support for 24" wide tray.	4.4 lbs	1 each

STANDARD FINISH: ZINC PLATED | AVAILABLE IN FINISHES: **BL**, **PW**, **CPC**

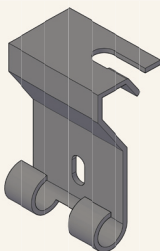
CEILING SUPPORTS



PART NUMBER	DESCRIPTION	WT. per pc.	QUANTITY per box
CEILING SUPT 12	Profile style support for 12" wide tray & smaller.	1.1 lbs	1 each
CEILING SUPT 16	Profile style support for 16" wide tray.	1.5 lbs	1 each
CEILING SUPT 18	Profile style support for 18" wide tray.	1.6 lbs	1 each
CEILING SUPT 20	Profile style support for 20" wide tray.	1.9 lbs	1 each
CEILING SUPT 24	Profile style support for 24" wide tray.	1.9 lbs	1 each

STANDARD FINISH:  | AVAILABLE IN FINISHES: **BL**, **PW**, **CPC**

TRAPEZE SUPPORTS



PART NUMBER	DESCRIPTION	WT. per pc.	QUANTITY per box
TRAP SUPT	Trapeze style side support attaches to the side of the tray; suggested for tray sizes 16" wide & smaller.	9 lbs	50pcs/ box

STANDARD FINISH:  | AVAILABLE IN FINISHES: **BL**, **PW**, **CPC**

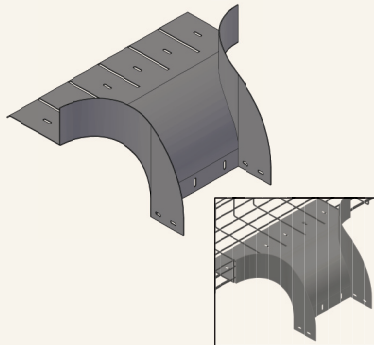
TRAPEZE SUPPORTS

- No polymer grommets required to hold threaded rod in place
- Able to support two individual sections of tray
- Works with splice hardware at tray junctions



= PRE-GALVANIZED FINISH

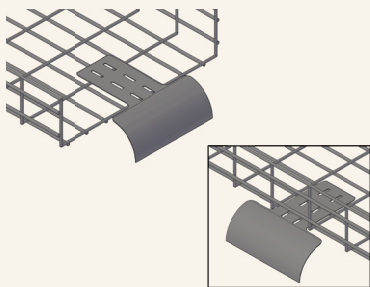
RADIUS DOWN



PART NUMBER	DESCRIPTION	WT. per pc.	QUANTITY per box
RADIUS DOWN 4	Radius Down with side panels for increased cable protection. Allows connection between both trays.	2.5 lbs	1 each
RADIUS DOWN 6	Radius Down with side panels for increased cable protection. Allows connection between both trays.	3.75 lbs	1 each
RADIUS DOWN 12	Radius Down with side panels for increased cable protection. Allows connection between both trays.	7.5 lbs	1 each

STANDARD FINISH: ZINC PLATED | AVAILABLE FINISHES: **BL**, **PW**, **CPC**

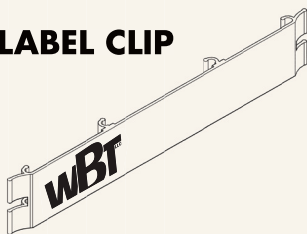
VERTICAL DOWN



PART NUMBER	DESCRIPTION	WT. per pc.	QUANTITY per box
VERTICAL DOWN	Use the vertical down when dropping cables from the end or the side of tray.	1.5 lbs	1 each

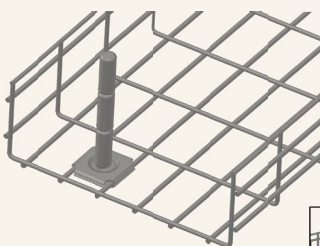
STANDARD FINISH: ZINC PLATED | AVAILABLE FINISHES: **BL**, **PW**, **CPC**

LABEL CLIP

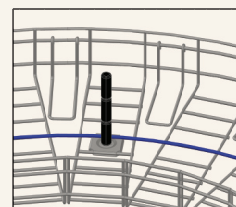
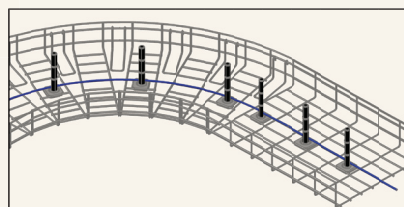


PART NUMBER	DESCRIPTION	WT. per pc.	QUANTITY per box
LABEL CLIP	Label Clip attachment for all sizes of tray	0.1 lb	1 each

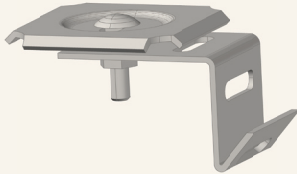
CABLE GUIDES



PART NUMBER	DESCRIPTION	WT. per pc.	QUANTITY per box
CABLE GUIDE	The cable guide is used to maintain cable bend radius when routing or pulling cables through fittings. It can also be used as a divider for straight sections as well as fittings.	1 lb	1 each



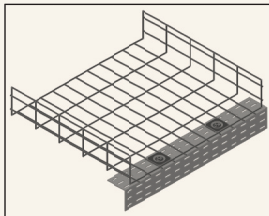
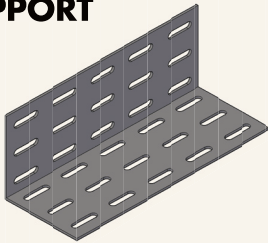
RACK ATTACHMENT



PART NUMBER	DESCRIPTION	WT. per pc.	QUANTITY per box
RACK ATTACHMENT	Attaches tray directly to the top of a standard rack.	1 lb	1 kit

STANDARD FINISH: ZINC PLATED | AVAILABLE FINISH: **BL**

TERMINATION SUPPORT

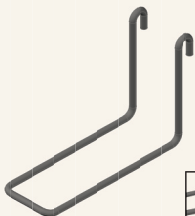


PART NUMBER	DESCRIPTION	WT. per pc.	QUANTITY per box
TERM SUPPORT 6	Wall termination for 6" wide tray	0.75 lb	1 each
TERM SUPPORT 8	Wall termination for 8" wide tray	1 lb	1 each
TERM SUPPORT 12	Wall termination for 12" wide tray	1.2 lbs	1 each
TERM SUPPORT 16	Wall termination for 16" wide tray	1.4 lbs	1 each
TERM SUPPORT 18	Wall termination for 18" wide tray	1.6 lbs	1 each
TERM SUPPORT 20	Wall termination for 20" wide tray	1.75 lbs	1 each
TERM SUPPORT 24	Wall termination for 24" wide tray	2 lbs	1 each

STANDARD FINISH: ZINC PLATED | AVAILABLE IN FINISHES: **BL, PW, CPC**

* Custom widths available.

FITTING ATTACHMENT



PART NUMBER	DESCRIPTION	WT. per pc.	QUANTITY per box
FITTING ATTACHMENT 2	Use the fitting attachment 2 to fill the gap in 2" tray when creating fittings.	1 lb	1 each
FITTING ATTACHMENT 4/6	Use the fitting attachment 4/6 to fill the gap in 4" or 6" tray when creating fittings.	1 lb	1 each

STANDARD FINISH:  | AVAILABLE IN FINISHES: **BL, PW, CPC**




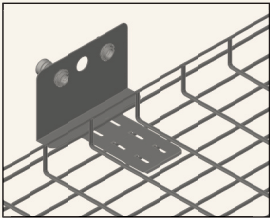
= PRE-GALVANIZED FINISH

CONDUIT ATTACHMENT



PART NUMBER	DESCRIPTION	WT. per pc.	QUANTITY per box
CONDUIT ATTACHMENT 3	Conduit to tray attachment for 1/2", 3/4" & 1" Conduit	1.5 lbs	1 each

STANDARD FINISH:  | AVAILABLE IN FINISHES: **BL**, **PW**, **CPC**

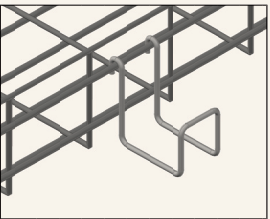


SIDECAR

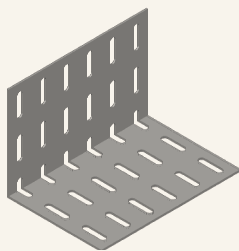


PART NUMBER	DESCRIPTION	WT. per pc.	QUANTITY per box
SIDE CAR	Additional cable support 2" deep	0.5 lb	1 each


STANDARD FINISH:  | AVAILABLE IN FINISHES: **BL**, **PW**, **CPC**

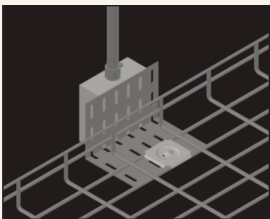


ELECTRICAL BOX



PART NUMBER	DESCRIPTION	WT. per pc.	QUANTITY per box
WBTELECTRICALBOX	Box to tray attachment	0.75 lb	1 each

STANDARD FINISH:  | AVAILABLE IN FINISHES: **BL**, **PW**, **CPC**



 = PRE-GALVANIZED FINISH

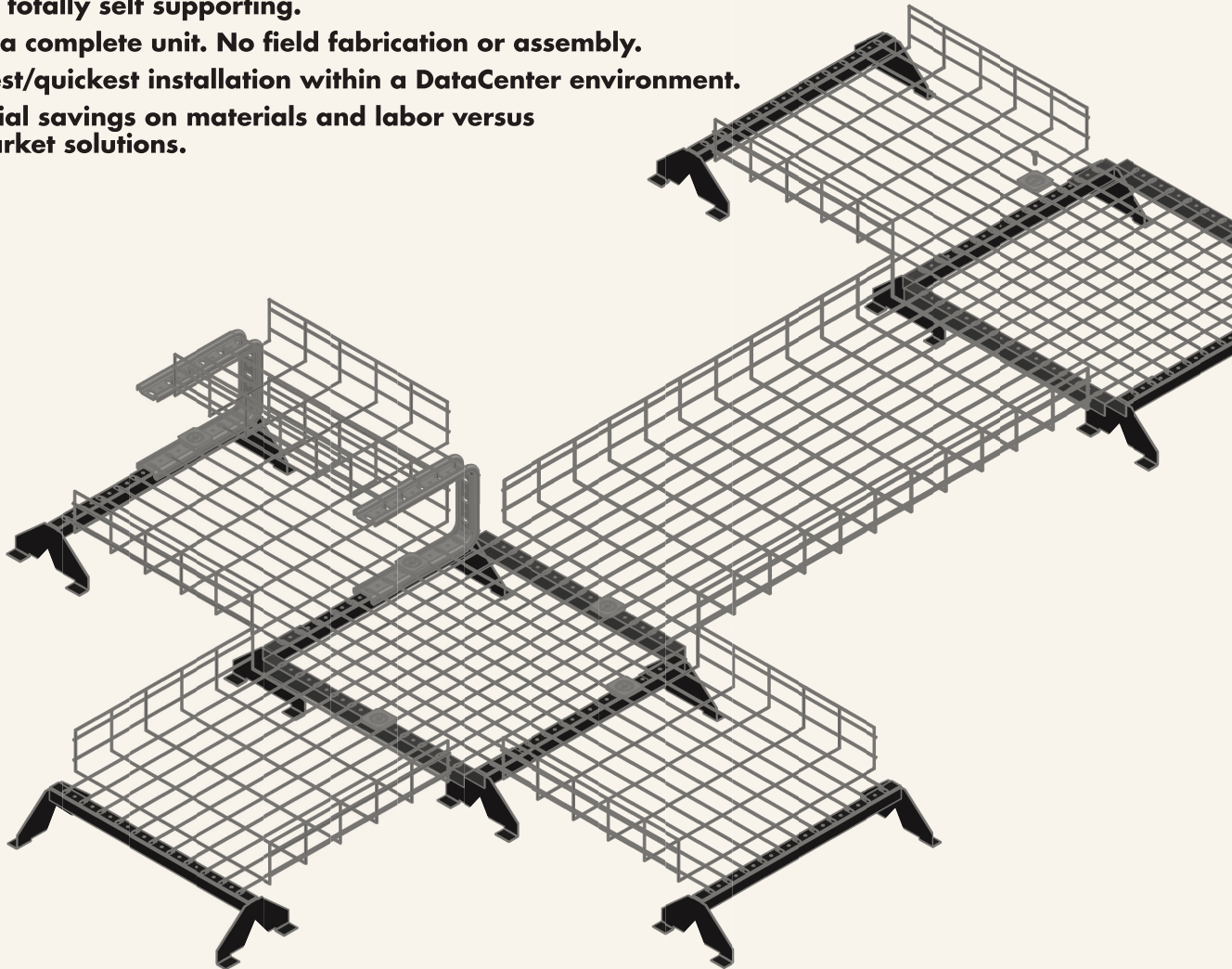
DATACENTER OR GENERAL OFFICE: WBT-U HAS YOU SUPPORTED.

WBT introduces another innovation to the marketplace, WBT-U. Too many underfloor/access floor solutions in today's market are comprised of components that require onsite assembly and configuration. WBT-U solves that problem. With WBT-U, the need to assemble each support, multilevel bars, brackets and complex splicing scenarios are gone.

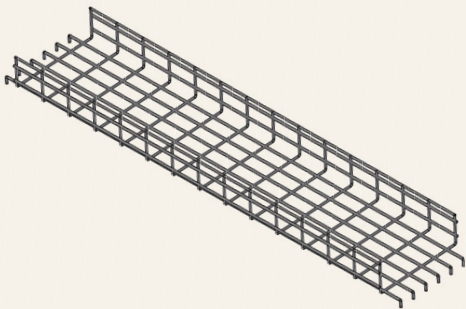
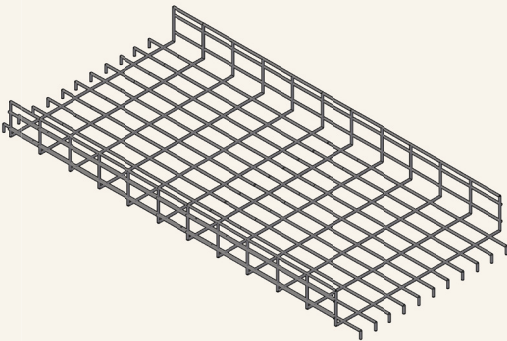
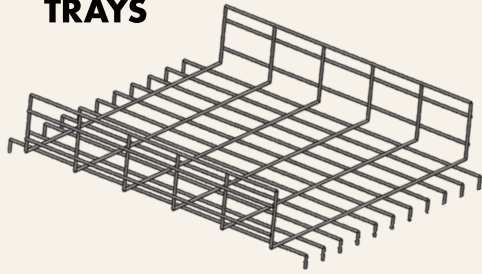
The supports ship as a complete unit. From the box to the floor in seconds, no fabrication or assembly, no tools or fasteners – start to finish.

The benefits of WBT-U include:

- **UL/cUL classified as equipment ground conductor.**
- **Single and Multilevel tray runs can be supported.**
- **WBT-U is zinc whisker free.**
- **Manufactured from PreGalv material, and then mechanically cleaned prior to shipment to remove oils and metallic particles.**
- **Tray lengths from 2' up to 10'. Less splicing, less supports, lower material and installed cost.**
- **WBT-U is totally self supporting.**
- **Ships as a complete unit. No field fabrication or assembly.**
- **The fastest/quickest installation within a DataCenter environment.**
- **Substantial savings on materials and labor versus other market solutions.**



TRAYS

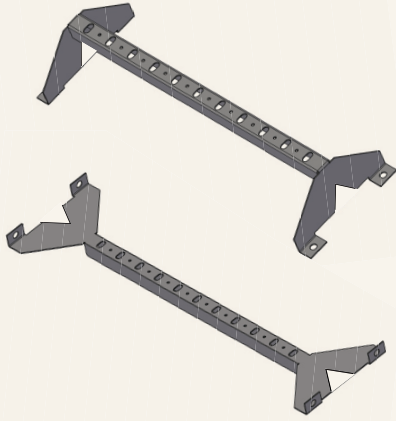


PART NUMBER	DEPTH	WIDTH	WT. per pc.	FILL*	LOAD lbs/ft
WBT2X6X2	2	6	2.25 lbs	211	n/a
WBT2X6X4	2	6	4.5 lbs	211	n/a
WBT2X6X6	2	6	6.75 lbs	211	n/a
WBT2X12X2	2	12	3.25 lbs	419	65
WBT2X12X4	2	12	6.25 lbs	419	65
WBT2X12X6	2	12	9.5 lbs	419	58
WBT2X24X2	2	22	4.75 lbs	772	116
WBT2X24X4	2	22	9.5 lbs	772	115
WBT2X24X6	2	22	14.25 lbs	772	75
WBT4X6X2	4	6	2.75 lbs	421	49
WBT4X6X4	4	6	5.5 lbs	421	49
WBT4X6X6	4	6	8.25 lbs	421	49
WBT4X12X2	4	12	3.75 lbs	838	143
WBT4X12X4	4	12	7.5 lbs	838	143
WBT4X12X6	4	12	11.25 lbs	838	78
WBT4X24X2	4	22	5.5 lbs	1543	116
WBT4X24X4	4	22	11 lbs	1543	115
WBT4X24X6	4	22	16.5 lbs	1543	115
WBT6X6X2	6	6	3.5 lbs	632	n/a
WBT6X6X4	6	6	7 lbs	632	n/a
WBT6X6X6	6	6	10.5 lbs	632	n/a
WBT6X12X2	6	12	4.5 lbs	1256	157
WBT6X12X4	6	12	9 lbs	1256	157
WBT6X12X6	6	12	13.5 lbs	1256	123
WBT6X24X2	6	22	6.25 lbs	2315	151
WBT6X24X4	6	22	12.5 lbs	2315	151
WBT6X24X6	6	22	18.75 lbs	2315	150
WBT8X12X2	8	12	5.25 lbs	1684	150
WBT8X12X4	8	12	10.5 lbs	1684	150
WBT8X12X6	8	12	15.75 lbs	1684	116
WBT8X20X2	8	20	7 lbs	2813	150
WBT8X20X4	8	20	14 lbs	2813	150
WBT8X20X6	8	20	21 lbs	2813	116
WBT0x24x2	0	22	4 lbs	n/a	67

8' sections available. Please consult the factory for details.

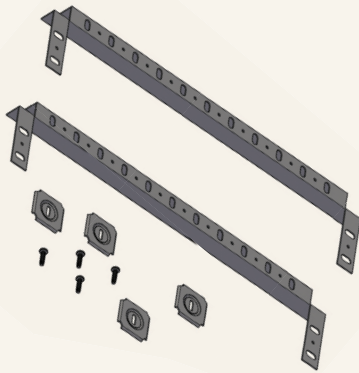
*The fill is a theoretical calculation based on a .19" diameter cable.

SUPPORT

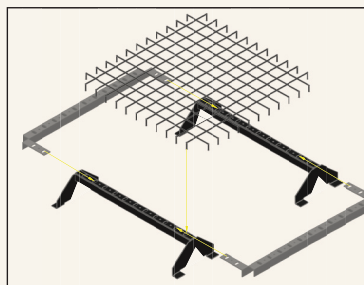


PART NUMBER	DESCRIPTION	WT. per pc.	QUANTITY per box
WBTUS4	Independent Underfloor support 4" high.	1.9 lbs	1 each
WBTUS6	Independent Underfloor support 6" high.	2.1 lbs	1 each
WBTUS8	Independent Underfloor support 8" high.	2.4 lbs	1 each
WBTUS10	Independent Underfloor support 10" high.	3.0 lbs	1 each
WBTUS12	Independent Underfloor support 12" high.	3.5 lbs	1 each
WBTUS14	Independent Underfloor support 14" high.	4.1 lbs	1 each
WBTUS16	Independent Underfloor support 16" high.	4.7 lbs	1 each
WBTUS18	Independent Underfloor support 18" high.	5.3 lbs	1 each
WBTUS20	Independent Underfloor support 20" high.	5.9 lbs	1 each
WBTUS22	Independent Underfloor support 22" high.	6.4 lbs	1 each
WBTUS24	Independent Underfloor support 24" high.	6.5 lbs	1 each
WBTUS26	Independent Underfloor support 26" high.	7.0 lbs	1 each
WBTUS28	Independent Underfloor support 28" high.	7.5 lbs	1 each
WBTUS30	Independent Underfloor support 30" high.	8.1 lbs	1 each

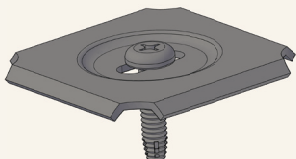
UNDERFLOOR FITTING



PART NUMBER	DESCRIPTION	WT. per pc.	QUANTITY per box
WBTUFITTING	Intersection fitting kit used with WBT0x24x2.	3 lbs	1 kit

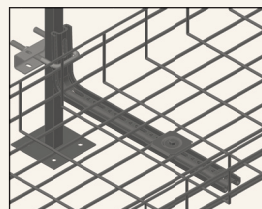
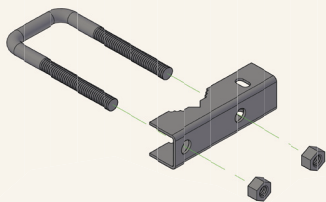


GROUND/HOLD DOWN



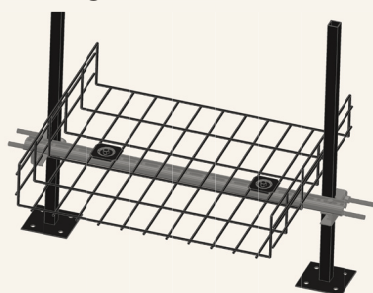
PART NUMBER	DESCRIPTION	WT. per box	QUANTITY per box
GROUND SPLICE	Ground/hold down method used with underfloor tray.	7 lbs	50 sets

PEDESTAL CLAMP



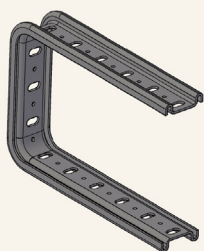
PART NUMBER	DESCRIPTION	WT. per box	QUANTITY per box
PEDESTAL CLAMP	Underfloor support clamp.	0.5 lbs	1 each

PEDESTAL KIT



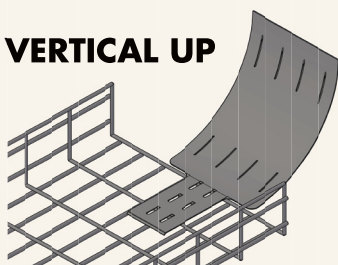
PART NUMBER	DESCRIPTION	WT. per box	QUANTITY per box
PEDESTAL KIT	Underfloor support kit.	3 lbs	1 each

UNDERFLOOR C BRACKET



PART NUMBER	DESCRIPTION	WT. per box	QUANTITY per box
WBTU6C	Multi-tier C bracket used to support 2nd tier of 6" wide tray underfloor.	2 lbs	1 each
WBTU12C	Multi-tier C bracket used to support 2nd tier of 12" wide tray underfloor.	4 lbs	1 each

VERTICAL UP



PART NUMBER	DESCRIPTION	WT. per box	QUANTITY per box
VERTICAL UP	The Vertical Up is used when transitioning cabling up from a raised computer floor.	1.75 lbs	1 each

WBTFORM

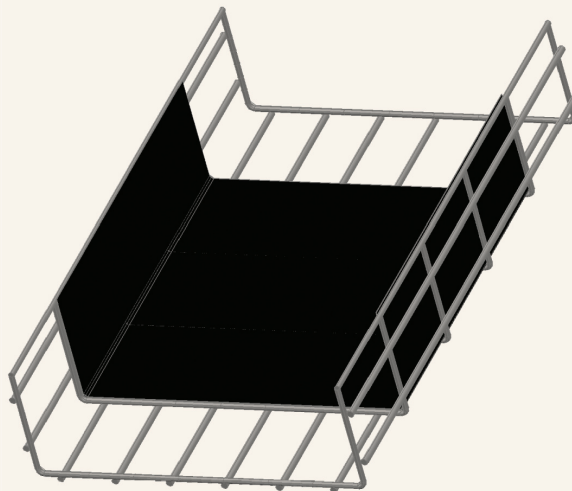
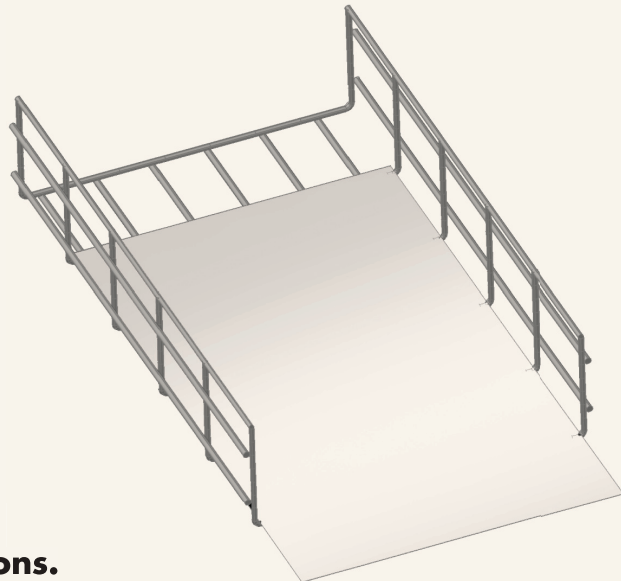
Non metallic solutions

WBT is proud to introduce WBTFORM, a new system for utilizing flame retardant polymer for use in creating tray inserts and covers. WBTFORM allows you to configure the material as a tray liner or insert, with the option of a flat bottom, or prescored to the tray depth for coverage of the bottom and sides.

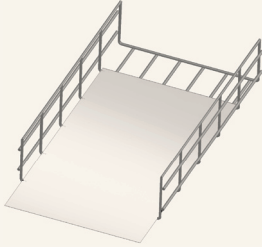
WBTFORM can even be utilized to envelop the entire tray, providing bottom, side and cover protection. WBTFORM is easily configurable into a variety of solutions from the simple to creative.

WBTFORM is:

- **UL 94V-0 Flame Class Rating.**
- **RoHS compliant.**
- **Non-hydroscopic (moisture absorption <0.1%).**
- **Temperature range to 115°C/239°F.**
- **Easily field configurable.**
- **Can be prescored at the factory for specific applications.**
- **Available in rolls for longer installations.**



WBTFORM

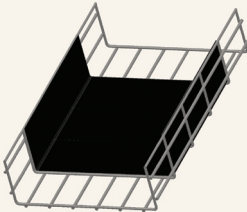


PART NUMBER	DESCRIPTION	WT. per pc.	QUANTITY per box
WBTFORM04	Polymer bottom insert for 4" wide tray 10' long	0.5 lb	1 each
WBTFORM06	Polymer bottom insert for 6" wide tray 10' long	0.65 lb	1 each
WBTFORM08	Polymer bottom insert for 8" wide tray 10' long	0.75 lb	1 each
WBTFORM12	Polymer bottom insert for 12" wide tray 10' long	1 lb	1 each
WBTFORM16	Polymer bottom insert for 16" wide tray 10' long	1.25 lbs	1 each
WBTFORM18	Polymer bottom insert for 18" wide tray 10' long	1.5 lbs	1 each
WBTFORM20	Polymer bottom insert for 20" wide tray 10' long	1.75 lbs	1 each
WBTFORM24	Polymer bottom insert for 24" wide tray 10' long	2.25 lbs	1 each

*WBTFORM parts are supplied as one continuous roll.

KEY: WBTFORM^{depth}X^{width} (i.e. – WBTFORM2X12 is for 2" deep X 12" wide tray)

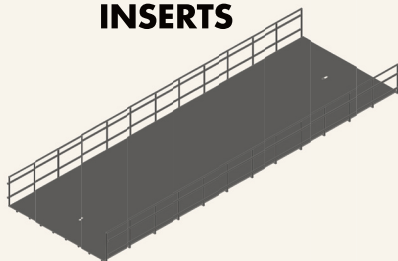
WBTFORM WITH SIDES



PART NUMBER	DESCRIPTION	WT. per pc.	QUANTITY per box
WBTFORM__X__	Polymer bottom insert with sides for specific tray depth and width 10' long	1 lb	1 each

*WBTFORM parts are supplied as one continuous roll.

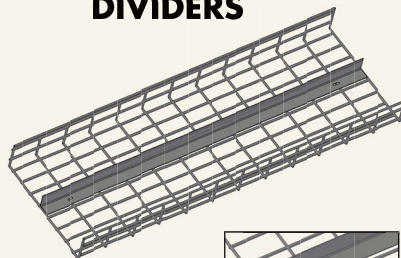
INSERTS



PART NUMBER	DESCRIPTION	WT. per pc.	LENGTH
INSERT4	Solid insert used with 4" wide tray galvanized.	3.5 lbs	5'
INSERT6	Solid insert used with 6" wide tray galvanized.	5 lbs	5'
INSERT8	Solid insert used with 8" wide tray galvanized.	7 lbs	5'
INSERT12	Solid insert used with 12" wide tray galvanized.	11 lbs	5'
INSERT16	Solid insert used with 16" wide tray galvanized.	13.5 lbs	5'
INSERT18	Solid insert used with 18" wide tray galvanized.	16.5 lbs	5'
INSERT20	Solid insert used with 20" wide tray galvanized.	18 lbs	5'
INSERT24	Solid insert used with 24" wide tray galvanized.	20 lbs	5'

STANDARD FINISH: | AVAILABLE IN FINISHES: **BL**, **PW**, **CPC**

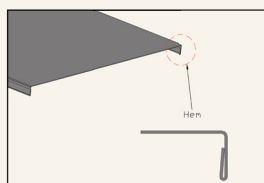
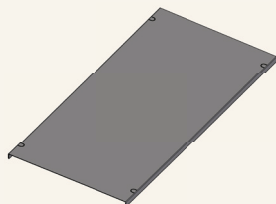
DIVIDERS



PART NUMBER	DESCRIPTION	WT. per pc.	LENGTH
DIVIDER2	Divider used with 2" deep tray galvanized.	2 lbs	5'
DIVIDER4	Divider used with 4" deep tray galvanized.	5 lbs	5'
DIVIDER6	Divider used with 6" deep tray galvanized.	7.5 lbs	5'
DIVIDER8	Divider used with 8" deep tray galvanized.	10 lbs	5'

STANDARD FINISH: | AVAILABLE IN FINISHES: **BL**, **PW**, **CPC**

COVERS



PART NUMBER	DESCRIPTION	WT. per pc.	LENGTH
COVER4	Metal cover for 4" wide tray galvanized.	3 lbs	5'
COVER6	Metal cover for 6" wide tray galvanized.	3.5 lbs	5'
COVER8	Metal cover for 8" wide tray galvanized.	4.5 lbs	5'
COVER12	Metal cover for 12" wide tray galvanized.	6 lbs	5'
COVER16	Metal cover for 16" wide tray galvanized.	8 lbs	5'
COVER18	Metal cover for 18" wide tray galvanized.	8.5 lbs	5'
COVER20	Metal cover for 20" wide tray galvanized.	9.5 lbs	5'
COVER24	Metal cover for 24" wide tray galvanized.	11 lbs	5'

STANDARD FINISH: | AVAILABLE IN FINISHES: **BL**, **PW**, **CPC**

= PRE-GALVANIZED FINISH

APPLICATIONS FOR WBT

Whatever your project details, WBT has a solution (standard or custom) to meet your leadtimes and budgets, and to exceed your expectations.

COMMUNICATIONS/DATACOM



Largest number/variety of trays and UL certified solutions.

Industry Firsts:

- WBT shaped wire (patent pending) for increased cable support and minimized cable strain
- Green PreGalv finish
- WBT-U DataCenter/Access Floor solution
- 12' standard tray sections
- UL Classified on all painted tray colors
- 8" depth trays
- Black and Pewter as standard paint finishes
- WBTFORM
- Vertical UP for cable routing from underfloor into cabinets or racks

INDUSTRIAL/ELECTRICAL



- Full offering of solutions to install tray in any industrial environment
- Higher loading capabilities allow for higher quantities and heavier cables
- Stainless steel tray, mounting accessories and splicing hardware for outdoor, caustic environments, food preparation and marine/offshore
- Custom tray configurations and solutions for unique environments
- Full inventory of trays and support products for quick ship capabilities

MARINE/OFFSHORE



- WBT offers Stainless Steel tray, mounting accessories and splicing hardware for marine/offshore
- Hot Dipped tray sections for severe/outdoor installation environments
 - Shaped tray offers higher load capabilities than competitive round/round constructions
 - 12' sections install faster and reduce labor and materials to splice tray sections by 20%

VISIT US ONLINE: **WWW.WBTRAY.COM**

WBT gives you access to a bevy of valuable online tools and forms such as cut sheets, CSI specs, technical specs, certified test reports & more.

WBT

http://www.wbtray.com/

LOCATE A REP CONTACT P: 888.492.8729

HOME WELCOME TO WBT WHY USE WBT APPLICATIONS FOR WBT PRODUCT CATALOG RESOURCES DEALER LOCATOR CONTACT

33% to 65% reduction in cable strain.

The shape tray utilizes the same standard hardware.

SHAPING THE FUTURE

The collective expertise within WBT has created an offering that no other single company can match. The differences between WBT's products and the market are substantial and numerous. [Learn more](#)

400% more cabling support.

SHAPING THE FUTURE ▶ The future of wire mesh tray providing unparalleled support for your cabling media.

PRODUCT CATALOG ▶ WBT at your fingertips. Click here to view our latest Product Catalog.

WBT DIFFERENCE ▶ WBT's products are a mix of innovative new concepts and ideas that offer better cabling support, less environmental impact and easier and faster installations.

DOWNLOADS ▶ Here you'll find Technical Specifications, Cut Sheets, and other useful information on our Programs, Policies and Support.

LOCATE A REP ▶ Locate field sales support, and WBT contacts for questions.

Home · Welcome to WBT · Why Use WBT · Applications For WBT · Product Catalog · Resources · Dealer Locator · Locate A Rep · Contact

© 2011 WBT. All Rights Reserved.

WBT CUT SHEETS

WBT CSI SPECIFICATIONS

WBT TECHNICAL SPECIFICATIONS

WBT Technical Drawing

**WBT offers unrivaled Customer Support.
Our services include the following:**

- Installation assistance
- Free BOM from your drawings or blueprints
- Bid Specification Documents
- Engineering Drawings
- Design Assistance
- Custom Fabricated parts for your specific installation needs

Please visit our website for further
information and downloads: **WBTray.com**

Email us: **sales@WBTray.com**

Call us toll free: **888.4WB.TRAY**
888.492.8729

Call us locally: **618.918.3821**

Fax us: **618.918.3825**

As part of a process of ongoing innovation, WBT reserves the right to change specifications without prior notice. This includes changes in product dimensions, materials and finish material/ processes and product availability. Please consult WBT for any questions.

It is acknowledged that all Trade Marks, Product Data, Logos, etc. used within this catalog are the sole and exclusive property of WBT LLC.





SHAPING THE FUTURE

115 Harting Drive
Centralia, IL 62801

888.4WB.TRAY
WBTRAY.COM



100% POST CONSUMER
RECYCLED CONTENT

