

20" High Velocity Floor Fan

Use a "QR Code App" on your smart phone to access our website and browse our entire product offering or go to: www.hurricane-fans.com



Hurricane™

www.hurricane-fans.com

Hurricane™



20" High Velocity Floor Fan Instruction Guide

Hurricane™

www.hurricane-fans.com

SAFETY

CAUTION

Read Rules for Safe Operation and Instructions carefully.

WARNING

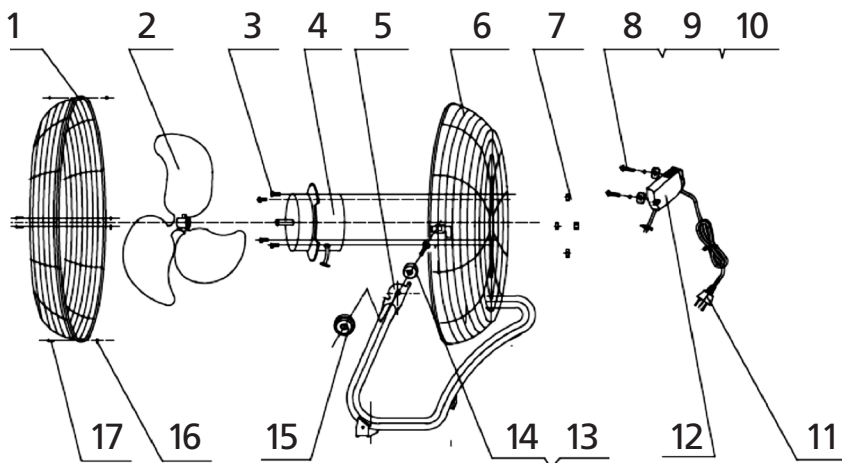
1. To reduce the risk of fire or electric shock, do not use this fan with any solid-state speed control device.
2. This appliance has a polarized plug (one blade is wider than the other). To reduce the risk of electric shock, this plug is intended to fit in a polarized outlet only one way. If plug does not fit fully in the outlet, reverse the plug. If it still does not fit, contact a qualified electrician. Do not attempt to defeat this safety feature.
3. To reduce the risk of fire or electric shock, DO NOT use this fan with any solidstate speed control devices.
4. Do not leave the fan running unattended.
5. Please make sure the voltage of the power supply is the same as shown on the fan nameplate.

RULES FOR SAFETY OPERATION

1. Never insert fingers, pencils, or any other object through the grille when fan is running.
2. Disconnect fan when moving from one location to another.
3. Disconnect fan when removing grilles for cleaning.
4. Be sure fan is on stable surface when operating to avoid overturning.
5. DO NOT use fan in window, rain may create electrical hazard.
6. Indoor use only.

PART NAMES

1. Front Guard 2. Blade 3. Screw 4. Motor 5. Stand 6. Rear Guard 7. Nut 8. Screw 9. Spring Washer 10. Washer 11. Power Cord 12. Switch Box 13. Bolt 14. Plastic Washer 15. Knob 16. Nut 17. Screw



OPERATING INSTRUCTIONS

1. Only operate the fan with the recommended voltage designated on the fan rating label.
2. To adjust fan speed turn the speed control knob located on the switch box to the desired speed:
0---Stop 1—Low 2—Medium 3—High
3. Adjust the tilt angle of the fan head by pushing the grille up or down to the desired position.

RULES FOR SAFETY OPERATION

- a) Never leave the fan running unattended. Unplug the fan when not in use.
- b) Position fan in an area that is free from obstructions. This will help to keep the fans air intake and discharge grille free from blockage.
- c) Never connect the fan to a power source while disassembled.
- d) Never insert fingers or any other object through the grille while the fan is running.
- e) Unplug from outlet when not in use or cleaning.
- f) If the power cord is damaged – discontinue the use immediately
- g) Do not cover the power cord with a rug, carpet or other material. Keep the power cord out of high traffic areas to avoid injury or damage to the cord.

CLEANING AND MAINTENANCE

- a. Always unplug the fan before cleaning.
- b. Do not allow water to drip on or enter into the fan motor housing.
- c. Use a soft dry cloth to clean exterior fan grille and motor housing.
- d. Do not use chemicals to clean the fan