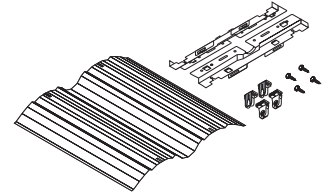


Catalog Number _____
 Type _____
 Date _____
 Prepared By _____
 Project _____

RFP Retrofit kit for parabolic troffers



REFLECTOR: Precision formed aluminum in with white, specular or enhanced specular finish. 1, 2 or 3 lamp versions are available. Reflectors are designed for tool-less snap-in installation

SOCKET BRACKETS: Die formed aluminum embossed for strength and uniformity. All painted metal parts are pre-treated with a phosphate bonding process and painted with electro-statically applied, high temperature baked enamel for superior quality and durability.

Material form, fit, and thickness meet or exceed, UL1598

standards. Components are Underwriters Laboratories classified for use in retrofit applications.

Computer assisted design results in maximum light output, uniform light distribution, rigid strength and ballast access without the use of tools.

SOCKETS: Rotary type shunted sockets designed for T8 instant start (contact factory for rapid start or programmed start applications). T5 sockets are non-shunted rotary type for programmed Start ballasts.

Each kit contains:

- Reflector
- Socket brackets
- Sockets
- Hardware

Reflector Lengths

2 Lamp model: 45.5"

3 lamp model: 46.25"

DIMENSIONS ARE NOMINAL

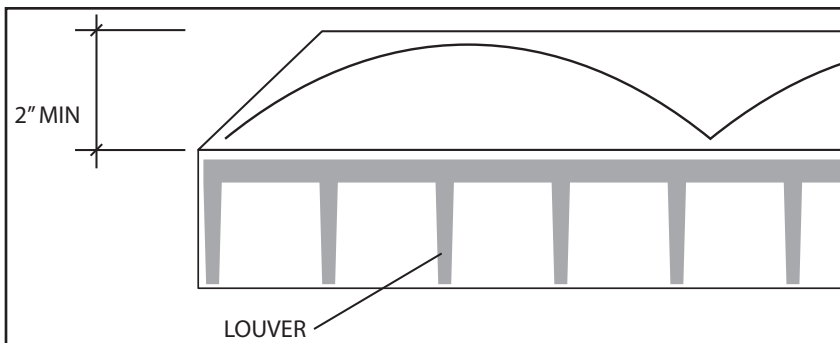
RFP Ordering Information

| Series | Size | #Lamps | Lamp Type | Reflector |
|--------|--|--|--|--|
| RFP | 12 = 1 X 2 14 = 1 X 4 22 = 2 X 2 24 = 2 X 4 | 1 = 1 lamp (1x2 and 1x4 only) 2 = 2 lamps 3 = 3 lamps (2x2 and 2x4 only) | T5 = F14T5 or F24T5HO (2' only) F28T5 or F54T5HO (4' only) T8 = F17T8 or F32T8 | W = White S = Specular M4 = 95% reflective specular Aluminum |

Optional Ballast Ordering Information

| Lamp Wattage / Type | Ballast | Voltage | Options |
|---------------------------|--|-----------------|---|
| 14T5 = F14T5 (2' only) | E = Electronic | U1 = 120 - 277V | ELS1 = Emergency Lighting (low lumens) |
| 17T8 = F17T8 (2' only) | E(x) = Electronic HPT8* | U3 = 347 - 480V | ELS2 = Emergency Lighting (medium lumens) |
| 24T5H = F24T5HO (2' only) | B12 = T5 Programmed Start | 347 = 347V | ELS3 = Emergency Lighting (high lumens) |
| 28T5 = F28T5 (4' only) | EDH = Daylight Harvesting Ballast for T8** | 480 = 480V | |
| 54T5H = F54T5HO (4' only) | | | |
| 32T8 = F32T8 (4' only) | | | |

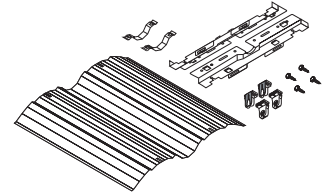
*Specify Ballast Factor: L = Low; N = Normal; or H = High **Contact Factory for availability



RFP Kits are designed to fit parabolic or lensed fixtures with at least 2" clearance from the top of the housing to the top of the louver or lens.

Catalog Number _____
 Type _____
 Date _____
 Prepared By _____
 Project _____

RFL Retrofit kit for lensed and recessed troffers



REFLECTOR: Precision formed aluminum in with white, specular or enhanced specular finish. RFL can be used on most lensed or parabolic troffers.

SOCKET BRACKETS: Die formed aluminum embossed for strength and uniformity. All painted metal parts are pre-treated with a phosphate bonding process and painted with electro-statically applied, high temperature baked enamel for superior quality and durability.

Material form, fit, and thickness meet or exceed, UL1598 standards. Components are Underwriters Laboratories classified for use in retrofit applications.

Computer assisted design results in maximum light output, uniform light distribution, rigid strength and ballast access without the use of tools.

SOCKETS: Rotary type shunted sockets designed for T8 instant start (contact factory for rapid start or programmed start applications). T5 sockets are non-shunted rotary type for programmed start ballasts.

RFL Ordering Information

| Series | Size | #Lamps | Lamp Type | Reflector |
|--------|--|--|--|--|
| RFL | 12 = 1 X 2 14 = 1 X 4 22 = 2 X 2 24 = 2 X 4 | 1 = 1 lamp (1x2 and 1x4 only) 2 = 2 lamps 3 = 3 lamps (2x2 and 2x4 only) | T5 = F14T5 or F24T5HO (2' only) F28T5 or F54T5HO (4' only) T8 = F17T8 or F32T8 | W = White S = Specular M4 = 95% reflective specular Aluminum |

EACH KIT CONTAINS:

- Reflector
- Socket brackets
- Sockets
- Hardware

OPTIONAL BALLAST ORDERING INFO

| Lamp Wattage / Type | Ballast | Voltage | Options |
|---------------------------|--|-----------------|---|
| 14T5 = F14T5 (2' only) | E = Electronic | U1 = 120 - 277V | ELS1 = Emergency Lighting (low lumens) |
| 17T8 = F17T8 (2' only) | E(x) = Electronic HPT8* | U3 = 347 - 480V | ELS2 = Emergency Lighting (medium lumens) |
| 24T5H = F24T5HO (2' only) | B12 = T5 Programmed Start | 347 = 347V | ELS3 = Emergency Lighting (high lumens) |
| 28T5 = F28T5 (4' only) | EDH = Daylight Harvesting Ballast for T8** | 480 = 480V | |
| 54T5H = F54T5HO (4' only) | B12DH = Daylight Harvesting Ballast for T5** | | |
| 32T8 = F32T8 (4' only) | | | |

*Specify Ballast Factor: L = Low; N = Normal; or H = High **Contact Factory for availability

Reflector Lengths

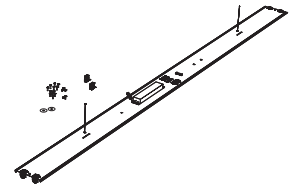
2 Lamp model: 45.5"

3 lamp model: 46.25"

DIMENSIONS ARE NOMINAL

Catalog Number _____
 Type _____
 Date _____
 Prepared By _____
 Project _____

RFC Retrofit kit for channel fixtures



BALLAST COVER AND END CAPS: Die formed heavy gauge steel embossed for strength and uniformity. All painted metal parts are pre-treated with a phosphate bonding process and painted with electrostatically applied, high temperature baked enamel for superior quality and durability. Beaded chain attachment system assures secure mounting and ease of installation. Material form, fit, and thickness meet or exceed, UL1598 standards. Components are Underwriters Laboratories classified for use in retrofit applications.

BALLAST: T8: is fully wired for 120V – 277V, 50-60Hz AC operation, thermally protected, Class P sound rated A, NPF. <10% THD. UL and C-UL listed damp location. Instant Start. T5: is fully wired for 120V – 277V, 50-60Hz AC operation, thermally protected, Class P sound rated A, NPF. <10% THD. UL and C-UL listed damp location. Programmed Start.

SOCKETS: Rotary type shunted sockets designed for T8 instant start (contact factory for rapid start or programmed start applications) T5 sockets are non-shunted rotary type for programmed Start ballasts.

APPLICATIONS: For retrofit of channels up to 5" wide.

RFC Ordering Information

| Series | Size | #Lamps | Lamp Wattage / Type | Ballast |
|--------|--------|---------------------|-----------------------------|---------------------------|
| RFC | 4 = 4' | 1 = 1 lamp | 28T5 = F28T5 | E = Electronic |
| | 8 = 8' | 2 = 2 lamps | 32T8 = F32T8 (4' and 8') | E(x) = Electronic HPT8* |
| | | 2T = 2 lamps Tandem | 54T5H = F54T5HO (4' and 8') | B12 = T5 Programmed Start |
| | | 4T = 4 lamps Tandem | | Blank = No ballast |

*Specify Ballast Factor: L = Low; N = Normal; or H = High

| Voltage | Options |
|-----------------|---|
| U1 = 120 - 277V | ELS1 = Emergency Lighting (low lumens) |
| U3 = 347 - 480V | ELS2 = Emergency Lighting (medium lumens) |
| 347 = 347V | ELS3 = Emergency Lighting (high lumens) |
| 480 = 480V | |

EACH KIT CONTAINS:

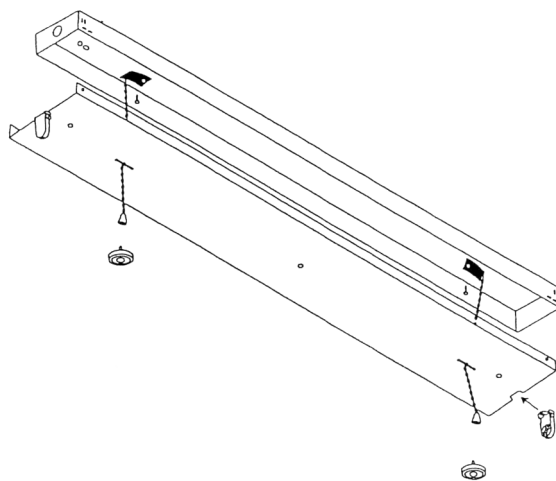
- Ballast cover (gear tray)
- Universal voltage ballast
- Sockets
- Hardware

Reflector Lengths

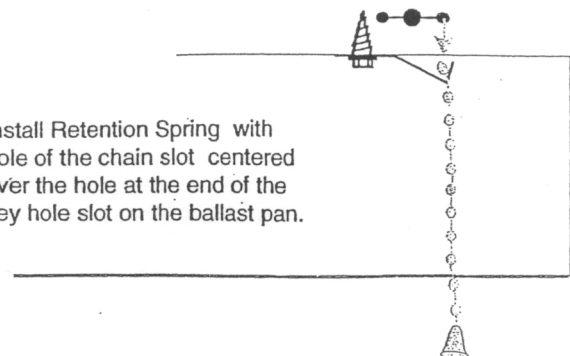
4' model: 48"

8' Model: 96"

DIMENSIONS ARE NOMINAL

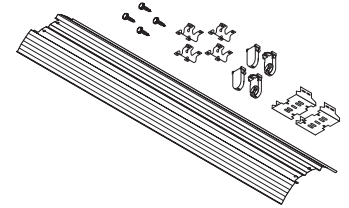


Install Retention Spring with hole of the chain slot centered over the hole at the end of the key hole slot on the ballast pan.



Catalog Number _____
 Type _____
 Date _____
 Prepared By _____
 Project _____

RFI Retrofit kit for industrial fixtures



REFLECTOR/BALLAST COVER: Precision formed aluminum in with white, specular or enhanced specular finish attached by quarter turn fasteners.

SOCKET BRACKETS: Die formed aluminum embossed for strength and uniformity. All painted metal parts are pre-treated with a phosphate bonding process and painted with electrostatically applied, high temperature baked enamel for superior quality and durability.

Material form, fit, and thickness meet or exceed, UL1598 standards. Components are Underwriters Laboratories classified for use in retrofit applications.

Computer assisted design results in maximum light output, uniform light distribution, rigid strength and ballast access without the use of tools.

SOCKETS: Rotary type shunted sockets designed for T8 instant start (contact factory for rapid start or programmed start applications) T5 sockets are non-shunted rotary type for programmed Start ballasts.

APPLICATIONS: For retrofit of channels up to 5" wide.

RFI Ordering Information

| Series | Size | #Lamps | Lamp Type | Reflector Width | Reflector |
|--------|--------|---------------------|-----------------------|-----------------|---------------------------------------|
| RFI | 4 = 4' | 1 = 1 lamp | T5 = F28T5 or F54T5HO | N = Narrow (6") | W = White |
| | 8 = 8' | 2 = 2 lamps | T8 = F32T8 | M = Medium (8") | S = Specular |
| | | 2T = 2 lamps Tandem | | W = Wide (10") | M4 = 95% reflective specular Aluminum |
| | | 4T = 4 lamps Tandem | | | |

EACH KIT CONTAINS:

- Reflector(s) / ballast cover(s)
- Socket brackets
- Sockets
- Center Saddle (8' version)
- Hardware

Reflector Lengths

4' model: 48.25"

8' model: 96.5"

DIMENSIONS ARE NOMINAL

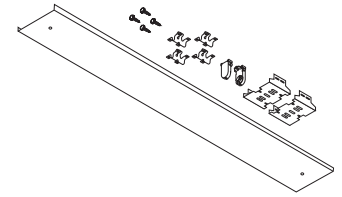
OPTIONAL BALLAST ORDERING INFO

| Lamp Wattage / Type | Ballast | Voltage | Options |
|---------------------|---------------------------|-----------------|---|
| 28T5 = F28T5 | E = Electronic | U1 = 120 - 277V | ELS1 = Emergency Lighting (low lumens) |
| 54T5H = F54T5HO | E(x) = Electronic HPT8* | U3 = 347 - 480V | ELS2 = Emergency Lighting (medium lumens) |
| 32T8 = F32T8 | B12 = T5 Programmed Start | 347 = 347V | ELS3 = Emergency Lighting (high lumens) |
| | Blank = No ballast | 480 = 480V | |

*Specify Ballast Factor: L = Low; N = Normal; or H = High

Catalog Number _____
 Type _____
 Date _____
 Prepared By _____
 Project _____

RFF Ballast cover retrofit kit



BALLAST COVER, END CAPS, CENTER SADDLE: Die formed aluminum embossed for strength and uniformity. All painted metal parts are pre-treated with a phosphate bonding process and painted with electrostatically applied, high temperature baked enamel for superior quality and durability. Ballast cover is one piece and tethered to allow ease of installation.

Material form, fit, and thickness meet or exceed, UL1598 standards. Components are Underwriters Laboratories classified for use in retrofit applications.

APPLICATIONS: For retrofit of channels up to 5" wide.

RFF Ordering Information

| Series | Size | #Lamps | Lamp Type |
|--------|--------|---------------------|-------------------------------------|
| RFF | 2 = 2' | 1 = 1 lamp | T5 = F14T5 or F24T5HO (2') |
| | 4 = 4' | 2 = 2 lamps | F28T5 or F54T5HO (4' or 8') |
| | 8 = 8' | 2T = 2 lamps Tandem | T8 = F17T8 (2') or F32T8 (4' or 8') |
| | | 4T = 4 lamps Tandem | |

Note: A 4' and 2' kit can be combined to convert a 6' fixture.

OPTIONAL BALLAST ORDERING INFO

| Lamp Wattage / Type | Ballast | Voltage | Options |
|---------------------|---------------------------|-----------------|---|
| 28T5 = F28T5 | E = Electronic | U1 = 120 - 277V | ELS1 = Emergency Lighting (low lumens) |
| 54T5H = F54T5HO | E(x) = Electronic HPT8* | U3 = 347 - 480V | ELS2 = Emergency Lighting (medium lumens) |
| 32T8 = F32T8 | B12 = T5 Programmed Start | 347 = 347V | ELS3 = Emergency Lighting (high lumens) |
| | Blank = No ballast | 480 = 480V | |

*Specify Ballast Factor: L = Low; N = Normal; or H = High

Reflector Lengths

4' model: 46.5" x 5.25"

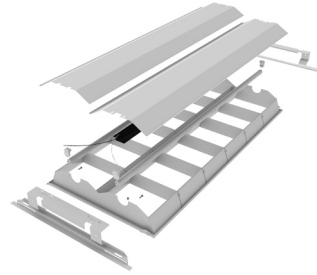
8' model: 93" x 5.25"

DIMENSIONS ARE NOMINAL

EACH KIT CONTAINS:

- Ballast cover
- Sockets
- End brackets
- Center saddle (8' version)
- Hardware

Catalog Number _____
 Type _____
 Date _____
 Prepared By _____
 Project _____



RFB Louver conversion kit

Reflector Precision formed pre painted aluminum in white. RFL can be used on most lensed or parabolic troffers with a depth greater than 4 1/2".

Louver Post painted white embossed aluminum to reduce lamp imaging

Socket Brackets Die formed steel embossed for strength and uniformity. All painted metal parts are pre-treated with a phosphate bonding process and painted with electro-statically applied, high temperature baked enamel for superior quality and durability. Material form, fit, and thickness meet or exceed, UL1598 standards. Components are Underwriters Laboratories classified for use in retrofit applications. Computer assisted design results in maximum light output, uniform light distribution, rigid strength and easy ballast access

Sockets Rotary type shunted sockets designed for T8 instant start (contact factory for rapid start or programmed start applications). T5 sockets are non-shunted rotary type for programmed Start ballasts.

RFF Ordering Information

| Series | Size | Diffuser | #Lamps | Lamp Wattage / Type |
|--------|------------|--|-------------|---|
| RFB | 22 = 2 X 2 | 12C = 12 cell White parabolic (2X4) 6C = 6 cell White parabolic (2X2) | 2 = 2 lamps | 14T5 = F14T5 (2' only) |
| | 24 = 2 X 4 | | | 17T8 = F17T8 (2' only) 28T5 = F28T5 (4' only) 54T5H = F54T5HO (4' only) 32T8 = F32T8 (4' only) |

EACH KIT CONTAINS:

- Reflector / Ballast cover
- End brackets
- Aluminum louver
- Hardware

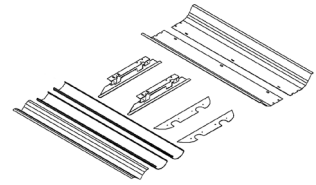
| Ballast (Sold separately) | Voltage | Options |
|---------------------------|-----------------|---|
| E = Electronic | U1 = 120 - 277V | ELS1 = Emergency Lighting (low lumens) |
| E(x) = Electronic HPT8* | U3 = 347 - 480V | ELS2 = Emergency Lighting (medium lumens) |
| B12 = T5 Programmed Start | 347 = 347V | ELS3 = Emergency Lighting (high lumens) |
| Blank = No ballast | 480 = 480V | |

*Specify Ballast Factor: L = Low; N = Normal; or H = High

Catalog Number _____
 Type _____
 Date _____
 Prepared By _____
 Project _____

RFT8

T8 Retrofit troffer to direct/indirect recessed



Socket Brackets / Reflector: Die formed heavy gauge steel. All painted metal parts are pre-treated with a phosphate bonding process and painted with electro-statically applied, high temperature baked enamel for superior quality and durability. Ballast cover removable without tools

Material form, fit, and thickness meet or exceed UL1598 standards. Components are Underwriters Laboratories classified for use in retrofit applications.

BALLAST (OPTIONAL): T8: is fully wired for 120V – 277V, 50-60Hz AC operation, thermally protected, Class P sound rated A, NPF. <10% THD. UL and C-UL listed damp location. Instant start and programmed start available.

DIFFUSER: Available with Acrylic extruded lenses or Die formed Steel micro-perf pre-treated with a phosphate bonding process and painted with electrostatically applied, high temperature baked enamel for superior quality and durability.

Minimum depth of existing fixture must be 3.5".

RFT Ordering Information

| Series | Size | Diffuser | #Lamps | Start Type |
|--------|--------------------------|--|-------------|--|
| RFT8 | 22 = 2 X 2 24 = 2 X 4 | A = Acrylic, white translucent P = Micro perf | 2 = 2 lamps | Blank = Instant start PS = Programmed start |

*Specify Ballast Factor: L = Low; N = Normal; or H = High

| Lamp Wattage / Type | Ballast | Voltage |
|------------------------|--------------------|-----------------|
| 17T8 = F17 (2' only) | Blank = No Ballast | U1 = 120 - 277V |
| 32T8 = F32T8 (4' only) | E = Electronic | U3 = 347 - 480V |
| | E(x) = Electronic | 347 = 347V |
| | HPT8* | 480 = 480V |

EACH KIT CONTAINS:

- Reflectors
- Ballast cover
- Sockets
- End brackets
- Acrylic or Micro-perf lenses
- Hardware
- End covers

Reflector Lengths

2x2 model: 22.375"

2x4 model: 46.25"

DIMENSIONS ARE NOMINAL