

Zinc Set-Screw Connectors & Couplings

For EMT

Type TC-500 Couplings

Use:

To join lengths of steel EMT for concrete-tight or dry location applications.

Features:

- Concretetight
- Pre-set/pre-staked set screws
- Combination head set screws

Material/Finish:

Zinc Die Cast

Third Party Certification:



UL Listed: E-35001



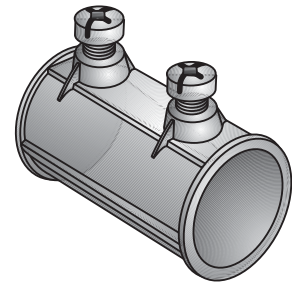
CSA Certified: 014489

Applicable Third Party Standards:

UL Standard: 514B
 CSA Standard: C22.2 No. 18
 NEMA: FB-1
 Fed. Spec: W-F-408E
 Type 2, Class 2, Kind K

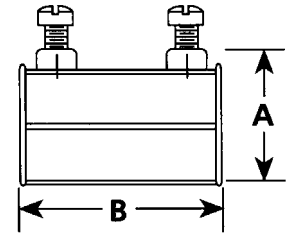
Note:

TC-511, 512, and 513 are single set-screw each end. TC-514, 515, 516, 517, 518, 519, and 520 are double set-screw each end.



TC-511

Trade Size (inches)	Catalog Number	Dimensions in Inches	
		A	B
½	TC-511	1.05	1.50
¾	TC-512	1.24	1.88
1	TC-513	1.53	2.00
1¼	TC-514	1.98	2.50
1½	TC-515	2.20	2.87
2	TC-516	2.69	3.44
2½	TC-517	3.33	4.01
3	TC-518	3.98	4.48
3½	TC-519	4.48	4.93
4	TC-520	4.98	5.23



Type TC-500 Connectors

Use:

To secure and terminate steel EMT to knockouts in concretetight box or dry location applications.

Features:

- Concretetight
- Pre-set/pre-staked set screws
- Combination head set screws
- Male hub threads NPS
- Available with insulated throat

Material/Finish:

Zinc Die Cast

Third Party Certification:



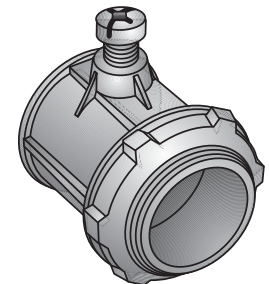
UL Listed: E-35001



CSA Certified: 014489

Note:

TC-501, 502, and 503 are single set-screw. TC-504, 505, 506, 507, 508, 509, and 510 are double set-screw. TCI-501, 502, and 503 are single set-screw. TCI-504, 505, 506, 507, 508, 509, and 510 are double set-screw.



TC-501

Trade Size (inches)	Catalog Number	Insulated Throat Catalog Number	Dimensions in Inches		
			A	B	C
½	TC-501	TCI-501	1.15	0.40	1.05
¾	TC-502	TCI-502	1.41	0.46	1.29
1	TC-503	TCI-503	1.56	0.53	1.51
1¼	TC-504	TCI-504	1.97	0.62	1.98
1½	TC-505	TCI-505	2.21	0.73	2.20
2	TC-506	TCI-506	2.51	0.76	2.69
2½	TC-507	TCI-507	3.10	1.04	3.33
3	TC-508	TCI-508	3.39	1.06	3.98
3½	TC-509	TCI-509	3.56	1.06	4.48
4	TC-510	TCI-510	3.78	1.11	4.98

