

# SERVICE AND WIRING SHEET

2265591-A



**ELECTRICAL SHOCK HAZARD**

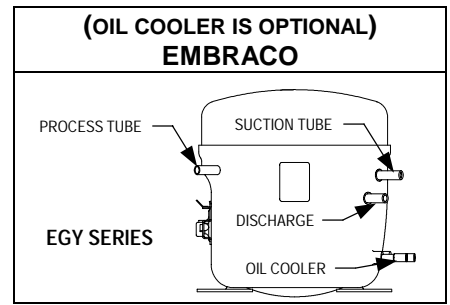
Disconnect electrical power before servicing

Failure to do so can result in death or electrical shock

PERFORMANCE DATA (NORMAL OPERATING CONDITIONS)			
AMB	WATTS	SYSTEM PRESURE (PSIG)	
		HIGH SIDE	LOW SIDE
70°	160 ± 20	95 ± 20	-7 TO 3
90°	170 ± 20	135 ± 20	-4 TO 3
110°	190 ± 20	185 ± 20	-2 TO 4

\* Normal operating conditions are viewed when the air and temperature controls are at mid-setting, freezer section 0 to -5°F and unit is cycling.

NOTE: Watt and pressure readings will vary and are influenced by the existing condition of the appliance, such as iced-up evaporator, condition of condenser, defrost cycle, pull-down time and customer use.



**SERVICE INFORMATION ( 2265592 REV.A)**

1. COMPRESSOR SUCTION AND PROCESS STUBS MAY NOT BE INTERCHANGED UNLESS INDICATED BY \*\*.
2. REFRIGERANT CHARGE MUST BE APPLIED TO HIGH SIDE ONLY.
3. ICE MAKER AND WATER VALVE NOT ORIGINAL EQUIPMENT ON ALL MODELS.
4. CAUTION: ICE MAKER CYCLE MUST BE INITIATED ELECTRICALLY. DO NOT TRY TO MANUALLY START CYCLE.
5. SERVICE DEFROST BIMETALS - 50°F OPEN.
6. DEFROST TIMER MAY CONTAIN A CAPACITOR IN SERIES WITH MOTOR. DO NOT CONTINUITY TEST WHEN CHECKING FOR FAILED TIMER MOTOR. INSTEAD, ENERGIZE TIMER AND LISTEN FOR GEAR MOVEMENT.
7. PART NUMBER CAN BE FOUND ON THE COMPONENT.

SERVICEABLE PARTS	CUBIC FEET		WATTAGE	RESISTANCE
	18' CD CB	18' CD CB		
COMPRESSOR	Embraco 2216049	Matsushita 2217634	120V	120V
RUN WINDINGS				1-6
START WINDINGS				3-11
PTC RELAY				
OVERLOAD				
RUN CAPACITOR				
THERMOSTAT				
DEFROST TIMER **				
ADAPTIVE DEFROST **(OPT)				
DEFROST HEATER			450-500	28-32
DEFROST BI-METAL				
CONDENSER FAN				
EVAPORATOR FAN			5-10	

\*\* PRIMARY SOURCE PART NUMBER

**STEPS TO ENTER ELECTRONIC DEFROST CONTROL TEST MODE (IF APPLICABLE)**

OPTION #1 (BI-METAL CLOSED)

STEPS

- #1 - POWER OFF TO REFRIGERATOR FOR AT LEAST 30 SECONDS
- #2 - THERMOSTAT OFF
- #3 - POWER ON TO REFRIGERATOR

OPTION #2 (BI-METAL CLOSED)

STEPS

- #1 - THERMOSTAT OFF 15 SECONDS
- #2 - THERMOSTAT ON 5 SECONDS  
(REPEAT STEPS 1 & 2 TWO MORE TIMES)
- #3 - THERMOSTAT OFF

ENTER TEST MODE

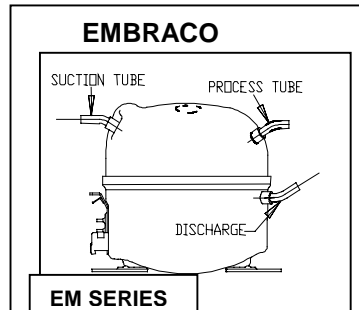
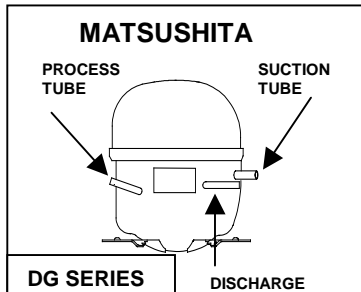
IN 3 - 8 SECONDS, CONTROL WILL TURN ON DEFROST HEATER. DEFROST HEATER WILL TURN ON FOR 21 MINUTES OR UNTIL BI-METAL OPENS. TO TERMINATE TEST EARLY, REMOVE POWER FROM REFRIGERATOR.

NOTE: IF OPTION #2 DOES NOT WORK, TRY OPTION #1 BEFORE REPLACING CONTROL. ALWAYS CHECK CONNECTIONS BEFORE REPLACING CONTROL.

HELPFUL HINT: UPON ENTERING TEST MODE, A RELAY TURNS OFF THE COMPRESSOR AND TURNS ON THE DEFROST TIMER. LISTEN FOR THE RELAY TO CLICK. IF RELAY CLICKS ONCE UPON ENTERING TEST MODE, CHECK FOR DEFROST HEAT. IF RELAY CLICKS TWICE, CHECK FOR BI-METAL OPEN.



**WARNING** IF BI-METAL IS BY-PASSED FOR TESTING (IF APPLICABLE), DO NOT OVERHEAT EVAPORATOR AREA.



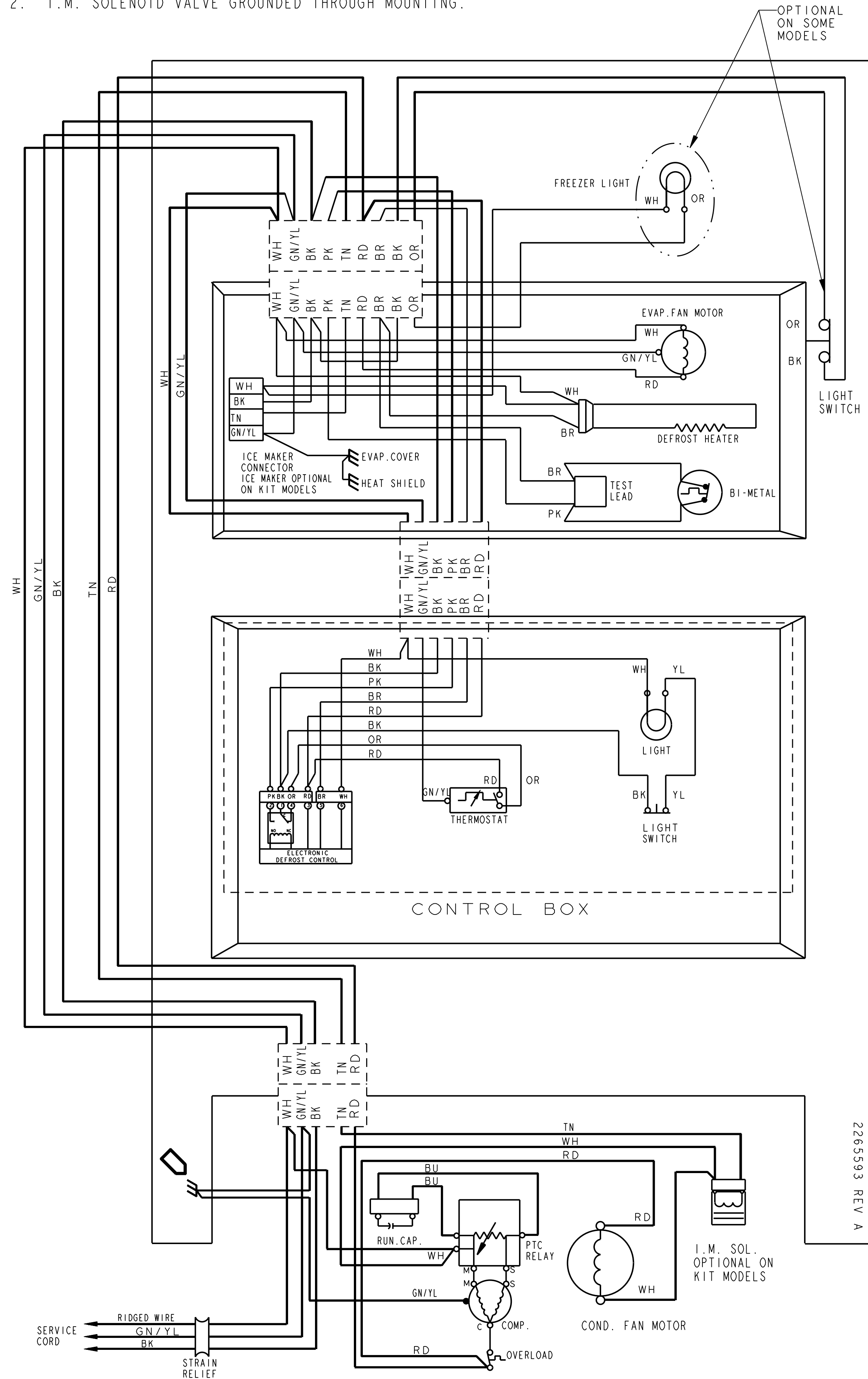
SERVICE & WIRING SHEET NO.

2265591-A

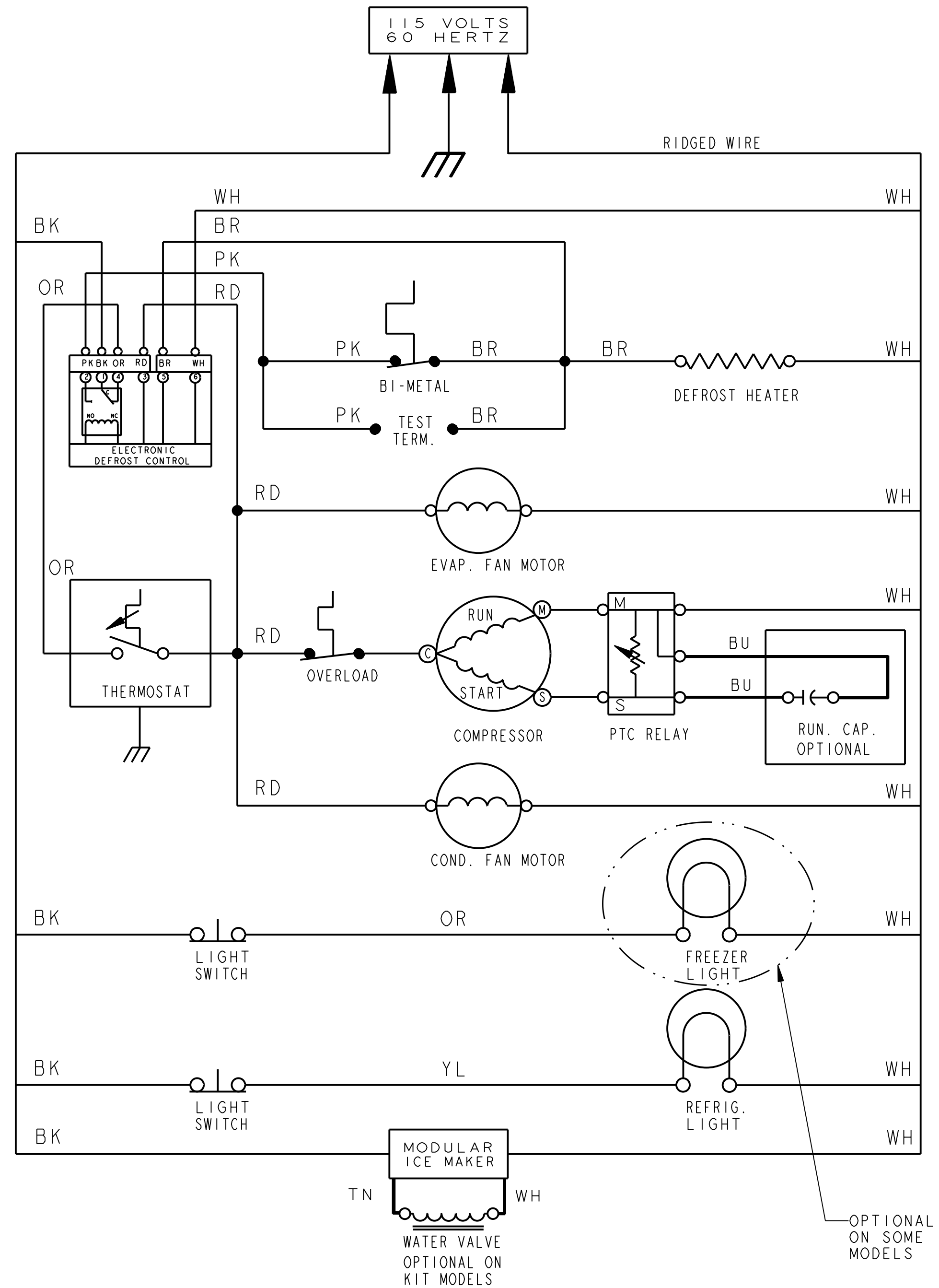
SERVICE & WIRING SHEET NO.

2265591-A

- NOTES:  
 1. COMPRESSOR GROUNDED THROUGH CONDENSER.  
 2. I.M. SOLENOID VALVE GROUNDED THROUGH MOUNTING.



2265593 REV A



WIRE COLOR CODE

- GN/YL - GREEN/YELLOW TRACER
- WH - WHITE
- YL - YELLOW
- RD - RED
- BU - BLUE
- BK - BLACK
- OR - ORANGE
- BR - BROWN
- GY - GRAY
- PK - PINK
- TN - TAN

MANUFACTURED UNDER ONE OR MORE OF THE FOLLOWING UNITED STATES PATENTS

3,960,631	4,659,157	4,765,696	4,908,544	5,011,101
4,084,725	4,665,708	4,767,896	4,911,508	5,033,182
4,090,641	4,694,553	4,768,353	4,914,928	5,033,273
4,102,660	4,706,169	4,776,178	4,920,758	5,042,398
4,327,557	4,707,401	4,787,216	4,924,680	5,044,704
4,330,310	4,709,556	4,799,362	4,934,541	5,050,777
4,640,432	4,715,512	4,800,935	4,936,641	5,070,708
4,649,712	4,728,759	4,801,181	4,944,566	5,077,985
4,649,717	4,745,656	4,833,894	4,958,890	D309,461
4,649,718	4,745,775	4,862,577	4,996,848	

OTHER PATENTS PENDING

SYMBOL CODE

- (●) - CONNECTOR - SCREW ON
- (○) - CONNECTOR - CLOSED END
- - PERMANENT CONNECTION
- - DISCONNECT TERMINAL
- ⎓ - PLUG CONNECTOR
- ⎓ - GROUND (CHASSIS)

**WARNING**  
 DISCONNECT FROM  
 ELECTRICAL SUPPLY  
 BEFORE SERVICING  
 UNIT.

THE INFORMATION BELOW IS FOR THE PURPOSE OF DISTRIBUTION AND IS SUBJECT TO REVISION WITHOUT NOTICE

DISTRIBUTION CODE	
SPECIAL DISTRIBUTION	
TOTAL PRINTS:	

UNLESS OTHERWISE SPECIFIED ALL TOLERANCES AND DATUMS APPLY RFS		DATABASE COPIED FROM: 2217548
PART NO.	2265593	PART REV A