



Featuring VirtualSource VS Reflectors

# 8" Horizontal VirtualBaffle™ One Lamp Downlights **CFCB832THEB** **CFCB842THEB**

One 26W, 32W, or 42W  
Triple Tube 4-Pin Lamp  
120V to 277V and 347V  
Non-IC Rated

DATE: \_\_\_\_\_ TYPE: \_\_\_\_\_

FIRM NAME: \_\_\_\_\_

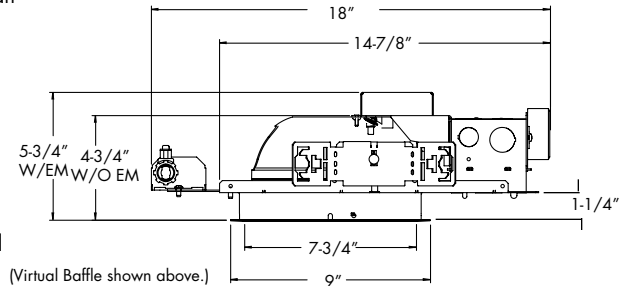
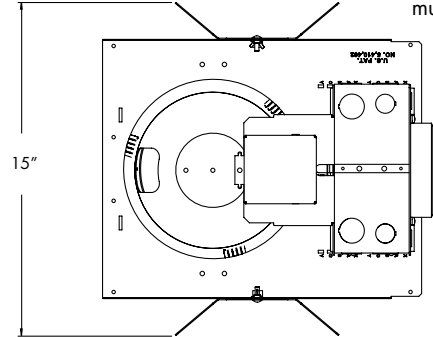
PROJECT: \_\_\_\_\_



Ceiling Cutout: 8 1/4"  
Maximum Ceiling Thickness: 1 1/4"

For conversion to millimeters,  
multiply by 25.4

Scale: NTS



**Virtual Baffle**



CB Model

### APPLICATIONS:

Virtual Baffle luminaires feature downlight and wall wash distributions with excellent brightness and glare control in a shallow plenum housing. Suitable for use in a wide variety of commercial applications including offices, lobbies, and retail projects where shallow plenum luminaires are required. The CFCB8 series is compatible with the Signos8 family of architectural elements.

### HOUSING:

One-piece galvanized 18-gauge cold rolled steel platform. Prewired J-box with snap-on cover for easy access.

### REFLECTOR:

360° rotatable Virtual Source® cross baffle or Turbo Baffle™ with upper reflector that allows for perfect jobsite alignment. Available in specular clear, champagne gold, or white. Self trim standard. A painted white self trim option and American Matte (MFC) also available.

### BALLAST:

One (1) compact fluorescent Class 'P' electronic multi-volt (120V through 277V) ballast suitable for operating all 26W, 32W, and 42W triple tube lamps. HPF and EOL protection standard. Accessible from below ceiling.

### LAMP/SOCKET:

One injection molded socket. Suitable for one 26W (GX24q-3 base), one 32W (GX24q-3 base), or one 42W (GX24q-4 base) 4-pin triple tube compact fluorescent lamp. Lamp furnished by others or as option below.

### INSTALLATION:

Universal adjustable mounting brackets accommodate 1 1/2" or 3/4" lathing channel (by others) or Prescolite 24" bar hangers (B24 or B6).

### LABELS:

UL listed or UL/CSA listed with CDN option for lamp locations. Approved for through wiring. Non-type IC and NYC approved.

### LAMP INCLUDED OPTION:

Specify lamp type T (Triple 4-pin) and temperature as shown below.

CATALOG NUMBER:

EXAMPLE: CFCB842THEBDM STCB8ACG LP42T30K B6

HOUSINGS	HOUSING OPTIONS	HOUSING OPTIONS	REFLECTORS	REFLECTOR FINISH	ACCESSORIES
<input type="checkbox"/> <b>CFCB832THEB</b> 8", (1) 26W or 32W Triple tube, multi-volt electronic ballast <input type="checkbox"/> <b>CFCB842THEB</b> 8", (1) 42W Triple tube, multi-volt electronic ballast	<input type="checkbox"/> <b>CDN</b> Canadian electrical code compliant ballast disconnect <input type="checkbox"/> <b>CDN 347V<sup>7</sup></b> Canadian electrical code compliant ballast disconnect <input type="checkbox"/> <b>EM<sup>2,4,8</sup></b> Emergency battery pack with integral test switch and indicator light. <input type="checkbox"/> <b>DM</b> Electronic Analog Dimming Ballast to 3%, 4-wire, 0-10V (120-277V) <input type="checkbox"/> <b>7DM</b> Advance Mark 7 Dimming Ballast to 5%, 4-wire, 0-10V, analog (120V-277V) (specify voltage/wattage) <input type="checkbox"/> <b>XDM</b> Advance Mark 10 Dimming Ballast to 5%, 2-wire, line voltage (specify supply voltage) <input type="checkbox"/> <b>ECDM</b> Lutron EcoSystem or 3-wire line voltage dimming ballast (120-277V). Dims to 5%.	<input type="checkbox"/> <b>HDM<sup>5</sup></b> Lutron Hi-Lume Dimming Ballast to 1%, 3-wire, line voltage (specify supply voltage/wattage) <input type="checkbox"/> <b>2DM<sup>5</sup></b> Lutron Tu-Wire Dimming Ballast to 5%, 2-wire, line voltage (120 volt only) (specify wattage) <input type="checkbox"/> <b>EMR<sup>3,8</sup></b> Emergency battery pack with remote test switch and indicator light <input type="checkbox"/> <b>FSDFA</b> Fuse kit installed at factory <input type="checkbox"/> <b>RIF1<sup>8</sup></b> Radio interference filter (single circuit) <input type="checkbox"/> <b>MW26<sup>9</sup></b> Max Wattage label, 26W <input type="checkbox"/> <b>SYL<sup>5</sup></b> Osram Sylvania Ballast (available only for standard EB option) <input type="checkbox"/> <b>SMT<sup>8</sup></b> Philips Advance SmartMate® ballast	<input type="checkbox"/> <b>STCB8ACL</b> vs 8" clear Alzak Cross Baffle reflector <input type="checkbox"/> <b>STCB8ACG</b> vs 8" champagne gold Alzak Cross Baffle reflector <input type="checkbox"/> <b>STTB8ACL</b> vs 8" clear anodized Turbo Baffle reflector (Available in clear finish only) <input type="checkbox"/> <b>STCB8AWH</b> 8" white cross baffle reflector with white flange	<input type="checkbox"/> <b>Blank</b> Specular <input type="checkbox"/> <b>SS<sup>1,2</sup></b> Semi-specular <hr/> <b>REFLECTOR OPTIONS</b> <input type="checkbox"/> <b>WW<sup>2</sup></b> Wall wash reflector <input type="checkbox"/> <b>L<sup>2</sup></b> Clear glass lens <input type="checkbox"/> <b>SL<sup>2</sup></b> Glass prismatic spread lens <input type="checkbox"/> <b>WT<sup>2</sup></b> Painted white self-flange	<input type="checkbox"/> <b>B24</b> Set of two (2) 24" bar hangers for T-bar ceilings <input type="checkbox"/> <b>B6</b> Set of two (2) bar hangers for ceiling joists up to 24" centers <input type="checkbox"/> <b>FSDFI</b> Fuse kit for field installation <hr/> <b>LAMP ACCESSORIES</b> <input type="checkbox"/> <b>LP</b> -wattage=26, 32, or 42 -type= T (Triple 4-pin) -temp=27K 30K 35K 41K (Kelvin) *Example: LP42T30K

<sup>1</sup>Not available for Champagne Gold with cross blades.  
<sup>2</sup>Not available for Turbo Baffle.  
<sup>3</sup>Remote mount test switch and indicator light for use with lensed trim.  
<sup>4</sup>Not valid with lensed trim.  
<sup>5</sup>Not available in 42 watt.  
<sup>6</sup>Available for Osram Sylvania Quick 60+® Limited Warranty when used with Osram lamps). See www.prescolite.com for details.  
<sup>7</sup>Dimming option not available in 347V.  
<sup>8</sup>Not available for 347V  
<sup>9</sup>Available for CFCB832THEB only



In a continuing effort to offer the best product possible we reserve the right to change, without notice, specifications or materials that in our opinion will not alter the function of the product.  
 Web: [www.prescolite.com](http://www.prescolite.com) • Tech Support: (888) 777-4832

**ARCH-CFL-027**

# PHOTOMETRIC DATA

## Architektur - 8" Horizontal VirtualBaffle® Downlights - CFCB8THEB Series

### BALLAST DATA

	26W Triple			32W Triple			42W Triple		
	120V	277V	347V	120V	277V	347V	120V	277V	347V
Total System Watts	28W	28W	38W	35W	35W	42W	44W	47W	48W
Input Current (Amps)	0.23	0.1	0.11	0.29	0.13	0.12	0.36	0.17	0.14
Input Frequency in Hz	50/60	50/60	50/60	50/60	50/60	50/60	50/60	50/60	50/60
Power Factor	>97%	>97%	>97%	>97%	>97%	>97%	>97%	>97%	>97%
Ballast Factor	>98%	>98%	>98%	>98%	>98%	>98%	>98%	>98%	>98%
Total Harmonic Distortion	<10%	<10%	<10%	<10%	<10%	<10%	<10%	<10%	<10%
Minimum Starting Temp	-18°C (0° F)	-18°C (0° F)	-18°C (0° F)	-18°C (0° F)	-18°C (0° F)	-18°C (0° F)	-18°C (0° F)	-18°C (0° F)	-18°C (0° F)

### LAMP DATA

	26W Triple	32W Triple	42W Triple
Rated Watts	26W Triple	32W Triple	42W Triple
Rated Lumens	1800	2400	3200
Efficacy (LPW)	69	75	76
Rated Life	10,000 hrs.	10,000 hrs.	10,000 hrs.
CRI	82	82	82
Minimum Starting Temp.	0°F	0°F	0°F

### CFCB832THEB-STCB8ACL Virtual Baffle

Test No. PL5764

### LUMINANCE DATA IN CANDELA/SQ. METER

Angle in Vertical	Average 0°	Average 45°	Average 90°
45°	10919	7370	40012
55°	400	0	4683
65°	0	0	0
75°	0	0	0
85°	0	0	0

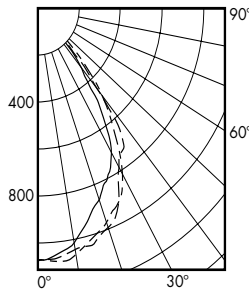
### CFCB832THEB-STCB8ACL Virtual Baffle

Lamp: 32W

Spacing Criteria: 0° = 1.0  
90° = 1.0

Efficiency: 56.1 %

### CANDLEPOWER DISTRIBUTION



Test No. PL576 4

### CANDLEPOWER SUMMARY

Angle	0°	45°	90°
0	1079	1079	1079
5	1092	1074	1060
10	1067	1046	1011
15	1018	1046	934
25	916	913	800
35	646	723	534
45	256	165	154
55	21	14	22
65	0	0	0
75	0	0	0
85	0	0	0

### CFCB832THEB-STCB8ACL Virtual Baffle

Test No. PL5764

### AVERAGE INITIAL FOOTCANDLES

Multiple Units (Square Array)  
Ceiling 80% Wall 50% Floor 20%

SPACING	RCR1	RCR3	RCR7
8.0	23	19	14
9.0	18	15	11
10.0	14	12	8
11.0	12	10	7
12.0	10	8	6

### CFCB832THEB-STCB8ACL Virtual Baffle

Test No. PL5764

### COEFFICIENTS OF UTILIZATION Zonal Cavity Method

Room Cavity Ratio	% Effective Floor Cavity Reflectance													
	20% Effective Floor Cavity Reflectance													
	% Wall Reflectance													
	80%			70%			50%			30%			10%	
	70	50	30	10	70	50	30	10	50	30	10	50	30	10
1	.64	.62	.61	.60	.63	.61	.60	.59	.59	.58	.57	.57	.56	.55
2	.61	.59	.57	.55	.60	.58	.56	.54	.56	.54	.53	.54	.53	.52
3	.58	.55	.52	.50	.57	.54	.52	.50	.53	.51	.49	.51	.50	.48
4	.56	.52	.49	.47	.55	.51	.48	.46	.50	.48	.46	.49	.47	.45
5	.53	.48	.45	.43	.52	.48	.45	.43	.47	.44	.42	.46	.44	.42
6	.50	.46	.42	.40	.49	.45	.42	.40	.44	.42	.40	.43	.41	.39
7	.47	.42	.39	.37	.47	.42	.39	.37	.41	.39	.37	.41	.38	.36
8	.45	.40	.37	.34	.44	.39	.36	.34	.39	.36	.34	.38	.36	.34
9	.42	.37	.34	.32	.42	.37	.34	.32	.36	.33	.31	.36	.33	.31
10	.40	.35	.31	.29	.39	.34	.31	.29	.34	.31	.29	.33	.31	.29

**Note:** Use of horizontally-lamped open downlights with amalgam-based CFL lamps in air-handling plenums is not recommended because cool air flow over the lamps will result in reduced light output. Prescolite recommends vertical lamp downlights or use of the regressed lensed trim option for horizontal downlights in these applications to reduce this effect. Refer to Prescolite White Paper WP0003 at [www.prescolite.com](http://www.prescolite.com) for more information.

### NOTES

Ⓞ vs Denotes a Virtual Source reflector.

Refer to [www.prescolite.com](http://www.prescolite.com) for additional photometric tests (IES Files).



Web: [www.prescolite.com](http://www.prescolite.com) • Tech Support: (888) 777-4832

701 Millennium Blvd., Greenville, SC 29607 U.S.A. • Phone (864) 678-1000

Copyright ©2015 Prescolite, Inc., a division of Hubbell Lighting, Inc. All Rights Reserved

Specifications subject to change without notice. • Printed in U.S.A. • ARCH-CFL-027 • 4/16/15



**HUBBELL**  
Lighting, Inc.