

## Test Report

No.: CANEC1520080904

Date: 04 Dec 2015

Page 1 of 6

GEM TERMINAL IND.CO.,LTD.

NO.138 LANE513,TA-TUNG ROAD,LU-CHU HSIANG,KAOHSIUNG HSIEN,TAIWAN.

The following sample(s) was/were submitted and identified on behalf of the clients as : PLUG FITTING C5191 PHOSPHOR

SGS Job No. : CP15-065535 - SZ  
Tested Sample Info. : PLUG FITTING C5191 PHOSPHOR  
Date of Sample Received : 20 Nov 2015  
Testing Period : 20 Nov 2015 - 02 Dec 2015  
Test Requested : Selected test(s) as requested by client.  
Test Method : Please refer to next page(s).  
Test Results : Please refer to next page(s).

Conclusion : Based on the performed tests on submitted sample(s), the results of Lead, Mercury, Cadmium, Hexavalent chromium comply with the limits as set by RoHS Directive (EU) 2015/863 amending Annex II to Directive 2011/65/EU.

Signed for and on behalf of  
SGS-CSTC Standards Technical Services Co., Ltd. Guangzhou Branch



Alkene Liang  
Approved Signatory



This document is issued by the Company subject to its General Conditions of Service printed overleaf, available on request or accessible at <http://www.sgs.com/en/Terms-and-Conditions.aspx> and, for electronic format documents, subject to Terms and Conditions for Electronic Documents at <http://www.sgs.com/en/Terms-and-Conditions/Terms-e-Document.aspx>. Attention is drawn to the limitation of liability, indemnification and jurisdiction issues defined therein. Any holder of this document is advised that information contained hereon reflects the Company's findings at the time of its intervention only and within the limits of Client's instructions, if any. The Company's sole responsibility is to its Client and this document does not exonerate parties to a transaction from exercising all their rights and obligations under the transaction documents. This document cannot be reproduced except in full, without prior written approval of the Company. Any unauthorized alteration, forgery or falsification of the content or appearance of this document is unlawful and offenders may be prosecuted to the fullest extent of the law. Unless otherwise stated the results shown in this test report refer only to the sample(s) tested.

Attention: To check the authenticity of testing /inspection report & certificate, please contact us at telephone: (86-755) 8307 1443, or email: [CN.Doccheck@sgs.com](mailto:CN.Doccheck@sgs.com)

198 Kezhu Road, Sciencetech Park Guangzhou Economic & Technology Development District, Guangzhou, China 510663 t (86-20) 82155555 f (86-20) 82075113 www.sgsgroup.com.cn  
中国·广州·经济技术开发区科学城科珠路198号 邮编: 510663 t (86-20) 82155555 f (86-20) 82075113 e [sgs.china@sgs.com](mailto:sgs.china@sgs.com)

Test Results:

Test Part Description:

Specimen No.	SGS Sample ID	Description
SN1	CAN15-200809.004	Copper-colored metal

Remarks:

- (1) 1mg/kg=1ppm=0.0001%
- (2) MDL = Method Detection Limit
- (3) ND = Not Detected (<MDL)
- (4) “-” = Not Regulated

**RoHS Directive (EU) 2015/863 amending Annex II to Directive 2011/65/EU**

Test Method:

- (1) With reference to IEC 62321-5:2013, determination of Cadmium by ICP-OES.
- (2) With reference to IEC 62321-5:2013, determination of Lead by ICP-OES.
- (3) With reference to IEC 62321-4:2013, determination of Mercury by ICP-OES.
- (4) With reference to IEC 62321:2008, determination of Hexavalent Chromium by spot test / Colorimetric Method using UV-Vis.

Test Item(s):	Limit	Unit	MDL	004
Cadmium(Cd)	100	mg/kg	2	ND
Lead (Pb)	1000	mg/kg	2	13
Mercury (Hg)	1000	mg/kg	2	ND
Hexavalent Chromium (Cr(VI))	-	-	◇	Negative

Notes:

- (1)The maximum permissible limit is quoted from RoHS Directive (EU) 2015/863.
- (2)◇ Spot-test:  
 Negative = Absence of CrVI coating, Positive = Presence of CrVI coating;  
 (The tested sample should be further verified by boiling-water-extraction method if the spot test result is Negative or cannot be confirmed.)  
 ◇ Boiling-water-extraction:  
 Negative = Absence of CrVI coating  
 Positive = Presence of CrVI coating; the detected concentration in boiling-water-extraction solution is equal or greater than 0.02 mg/kg with 50 cm<sup>2</sup> sample surface area.  
 Information on storage conditions and production date of the tested sample is unavailable and thus Cr(VI) results represent status of the sample at the time of testing.



This document is issued by the Company subject to its General Conditions of Service printed overleaf, available on request or accessible at <http://www.sgs.com/en/Terms-and-Conditions.aspx> and, for electronic format documents, subject to Terms and Conditions for Electronic Documents at <http://www.sgs.com/en/Terms-and-Conditions/Terms-e-Document.aspx>. Attention is drawn to the limitation of liability, indemnification and jurisdiction issues defined therein. Any holder of this document is advised that information contained hereon reflects the Company's findings at the time of its intervention only and within the limits of Client's instructions, if any. The Company's sole responsibility is to its Client and this document does not exonerate parties to a transaction from exercising all their rights and obligations under the transaction documents. This document cannot be reproduced except in full, without prior written approval of the Company. Any unauthorized alteration, forgery or falsification of the content or appearance of this document is unlawful and offenders may be prosecuted to the fullest extent of the law. Unless otherwise stated the results shown in this test report refer only to the sample(s) tested.

**Attention: To check the authenticity of testing /inspection report & certificate, please contact us at telephone: (86-755) 8307 1443, or email: CN.Doccheck@sgs.com**

Material No.: PLUG FITTING C5191

88051DPL-0	92523PS-1	96748PS-2	98042APS-2	98713APS-0
88051DPL-2	92523PS-2	96900PS-2	98042BPL-1	98713PS-0
88051DPS-2	92524PS-0	96900SPS-2	98042EPL-1	98714APS-0
92024LPS-2	92525BS-2	97641BPL-0	98042FPL-1	98714APS-2
92024PS-2	92525PL-0	97711PS-0	98051A	98714BPS-0
92027LPS-2	92525PL-2	97711PS-2	98051B	98714CPS-0
92027PS-2	92526PS-0	97712APS-2	98051M	98714PS-0
92028LPS-2	92526PS-1	97712PS-2	98079DPL-1	98714PS-1
92028PS-2	92526PS-2	97713PS-2	98127PS-0	98714PS-2
92047PS-0	92528PS-0	97714APS-0	98136PL-0	98714APS-0T
92047PS-2	92529PS-0	97714PS-0	98160APS-0	98715APS-0
92053LPS-2	93733PS-2	97714PS-1	98167PS-0	98715PS-0
92053PS-2	95612PL-1	97715APS-0	98170PS-0	98715PS-1
92053SPS-2	95712PL-0	97715PS-0	98170PS-0A	98715PS-2
92059PS-2	95712PL-1	97716APS-0	98172PS-0	98715PS-A0
92083LPS-2	95712PL-1	97716PS-0	98223PS-0	98716PS-0
92083PS-2	96700PS-0	97717PS-0	98223PS-1	98717PS-0
92084PS-2	96700PS-2	97717PS-2	98230PS-0	98718PL-1
92085PS-2	96730PS-0	97718PS-1	98234APS-0	98718PS-1
92517PS-0	96730PS-2	97719PS-1	98236PS-0	98719PL-1
92517PS-1	96735SPS-2	97740LPS-0	98238PS-0	98719PS-1
92518PL-0	96740PS-2	97740PS-0	98239PS-0	98721PS-0
92518PL-1	96741LPS-2	97741APS-0	98283PS-0	98722PS-0
92519PS-0	96741PS-2	97741APS-2	98575PS-0	98728PS-0
92519PS-1	96741SPS-2	97741PS-0	98575PS-1	98728PS-2
92519PS-2	96747APS-0	97742APS-0	98702APS-0	98732APS-0
92520PL-0	96747APS-1	97742PS-0	98702APS-1	98732APS-2
92520PL-1	96747LAPS-0	97747PS-0	98702APS-2	98732CPS-0



This document is issued by the Company subject to its General Conditions of Service printed overleaf, available on request or accessible at <http://www.sgs.com/en/Terms-and-Conditions.aspx> and, for electronic format documents, subject to Terms and Conditions for Electronic Documents at <http://www.sgs.com/en/Terms-and-Conditions/Terms-e-Document.aspx>. Attention is drawn to the limitation of liability, indemnification and jurisdiction issues defined therein. Any holder of this document is advised that information contained hereon reflects the Company's findings at the time of its intervention only and within the limits of Client's instructions, if any. The Company's sole responsibility is to its Client and this document does not exonerate parties to a transaction from exercising all their rights and obligations under the transaction documents. This document cannot be reproduced except in full, without prior written approval of the Company. Any unauthorized alteration, forgery or falsification of the content or appearance of this document is unlawful and offenders may be prosecuted to the fullest extent of the law. Unless otherwise stated the results shown in this test report refer only to the sample(s) tested.

Attention: To check the authenticity of testing /inspection report & certificate, please contact us at telephone: (86-755) 8307 1443, or email: CN.Doccheck@sgs.com

92520PL-2	96747LAPS-1	97766PL-0	98702BPS-0	99222PS-0
92521PL-1	96747LPS-1	98042APL-1	98702PS-0	99222PS-2
92522PL-1	96747PS-1	98042APS-0	98702PS-1	99223PS-0
92523PS-0	96747PS-2	98042APS-1	98702PS-2	99761PS-0
98735PL-1	99223PS-2	99831PS-2	M98051A-1W	99775APS-0
98739APS-0	99411PS-0	99846PS-2	M98745P-0W1	99775APS-2
98739LPS-0	99411PS-2	99851PS-0	M98793	99783PS-0
98739PS-0	99465PS-0	99851PS-2	M98793C	99783PS-2
98740DPS-0	99570PS-0	99852PS-0	M98795AP-X	99787PS-2
98740LPS-0	99570PS-2	99852PS-2	M98795A-X	99789PS-0
98740PS-0	99577PS-0	99854PS-0	M98796AP-X	99789PS-1
98741APS-0	99577PS-2	99854PS-2	M98796A-X	99789PS-2
98741BPS-0	99731PS-0	99855PS-0	97733PS-1	99797PS-1
98741PS-0	99737APS-0	99855PS-2	96142PS-2	99831PS-0
98741SPS-0	99737APS-2	99866PS-0	98230APS-0	A98795B
98742PS-0	99737LPS-0	99866PS-2	98238APS-0	A98795BP
98745CPS-0	99737LPS-2	99877PS-0	98741BSPS-0	A98796A
98745PS-0	99737PS-0	99877PS-2	97720PS-0	A98796AP
98746APS-0	99737PS-2	99878PS-0	98752LPS-0	A98796B
98746BPS-0	99741BPS-0	99880PS-2	97722PL-0	A98796BP
98746PS-0	99741PS-0	A61625AP	97723PL-0	M88051PL-1B
98750DPS-0	99741PS-1	A88051EP	98170PS-1	M88052PL-1B
98750PS-0	99741PS-2	A92069-1	88051DPS-1	M88052PL-1BMT
98752PS-0	99745PS-0	A98793A	M87642BL-0W	M98051A
98752PS-0	99745PS-1	A98793B	M87642BL-1W	M98051A-1
98760PS-0	99745PS-2	A98793C	98739BPS-0	98732PS-0
98760PS-ODM1	99754PS-2	A98793D	97793PL-0	98732PS-2
98775PL-1	99754PS-2	A98795A	M98740P-0W	98733PS-0
98782PL-06	99754SPS-2	A98795AP	98714DPS-0	98733PS-1
98783PL-06	98793BPS-0	98793DPS-0	99165PS-0	
98793APS-0	98793CPS-0	99138PS-0	99165PS-2	



This document is issued by the Company subject to its General Conditions of Service printed overleaf, available on request or accessible at <http://www.sgs.com/en/Terms-and-Conditions.aspx> and, for electronic format documents, subject to Terms and Conditions for Electronic Documents at <http://www.sgs.com/en/Terms-and-Conditions/Terms-e-Document.aspx>. Attention is drawn to the limitation of liability, indemnification and jurisdiction issues defined therein. Any holder of this document is advised that information contained hereon reflects the Company's findings at the time of its intervention only and within the limits of Client's instructions, if any. The Company's sole responsibility is to its Client and this document does not exonerate parties to a transaction from exercising all their rights and obligations under the transaction documents. This document cannot be reproduced except in full, without prior written approval of the Company. Any unauthorized alteration, forgery or falsification of the content or appearance of this document is unlawful and offenders may be prosecuted to the fullest extent of the law. Unless otherwise stated the results shown in this test report refer only to the sample(s) tested.

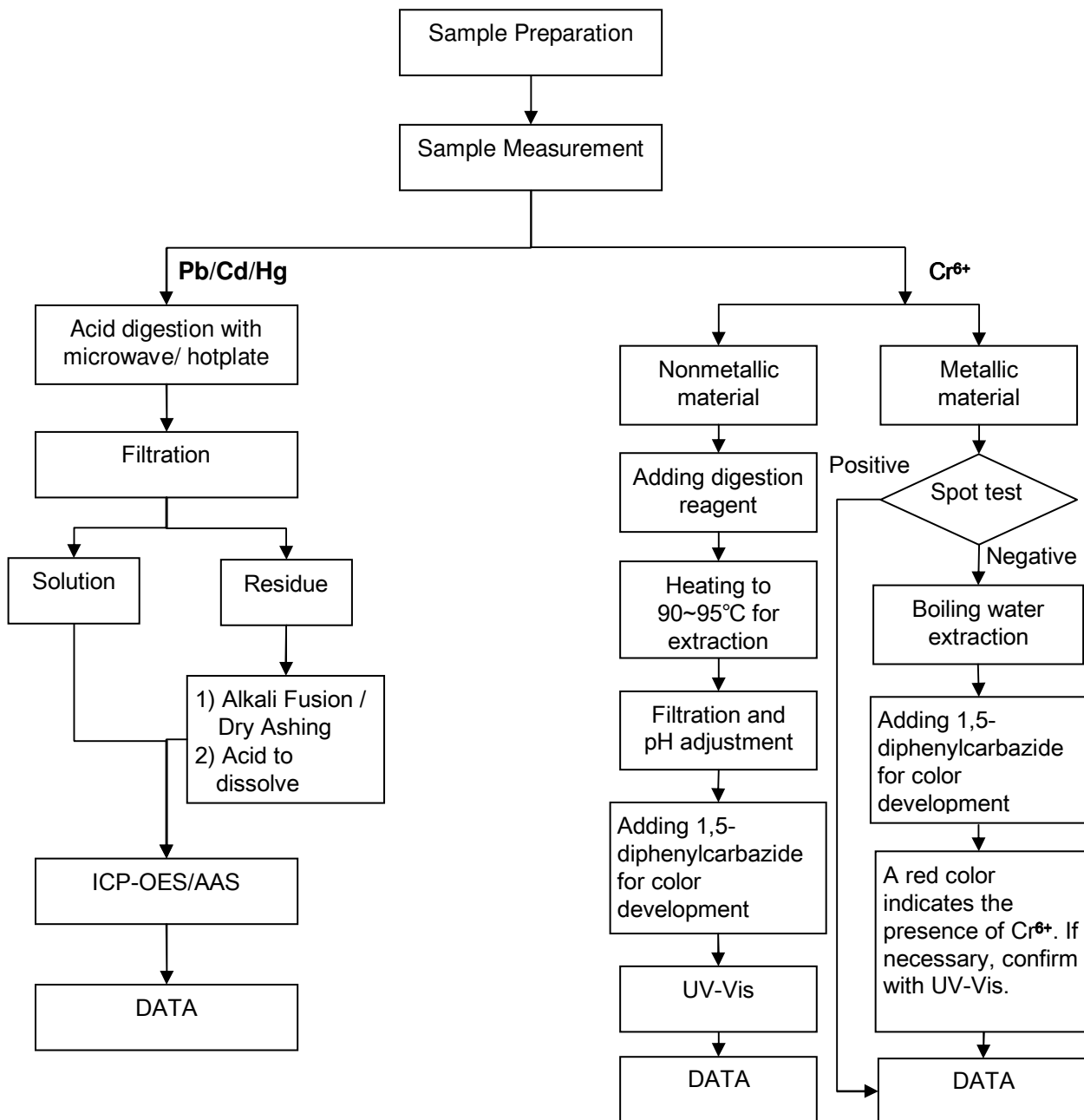
Attention: To check the authenticity of testing /inspection report & certificate, please contact us at telephone: (86-755) 8307 1443, or email: CN.Doccheck@sgs.com



## ATTACHMENTS

### RoHS Testing Flow Chart

- 1) Name of the person who made testing: Bruce Xiao
- 2) Name of the person in charge of testing: Bella Wang
- 3) These samples were dissolved totally by pre-conditioning method according to below flow chart (Cr6+ test method excluded).



This document is issued by the Company subject to its General Conditions of Service printed overleaf, available on request or accessible at <http://www.sgs.com/en/Terms-and-Conditions.aspx> and, for electronic format documents, subject to Terms and Conditions for Electronic Documents at <http://www.sgs.com/en/Terms-and-Conditions/Terms-e-Document.aspx>. Attention is drawn to the limitation of liability, indemnification and jurisdiction issues defined therein. Any holder of this document is advised that information contained hereon reflects the Company's findings at the time of its intervention only and within the limits of Client's instructions, if any. The Company's sole responsibility is to its Client and this document does not exonerate parties to a transaction from exercising all their rights and obligations under the transaction documents. This document cannot be reproduced except in full, without prior written approval of the Company. Any unauthorized alteration, forgery or falsification of the content or appearance of this document is unlawful and offenders may be prosecuted to the fullest extent of the law. Unless otherwise stated the results shown in this test report refer only to the sample(s) tested.

Attention: To check the authenticity of testing /inspection report & certificate, please contact us at telephone: (86-755) 8307 1443, or email: [CN.Doccheck@sgs.com](mailto:CN.Doccheck@sgs.com)

198 Kezhu Road, Sciencetech Park Guangzhou Economic & Technology Development District, Guangzhou, China 510663 t (86-20) 82155555 f (86-20) 82075113 www.sgsgroup.com.cn  
中国·广州·经济技术开发区科学城科珠路198号 邮编: 510663 t (86-20) 82155555 f (86-20) 82075113 e [sgs.china@sgs.com](mailto:sgs.china@sgs.com)

Sample photo:



SGS authenticate the photo on original report only

\*\*\* End of Report \*\*\*