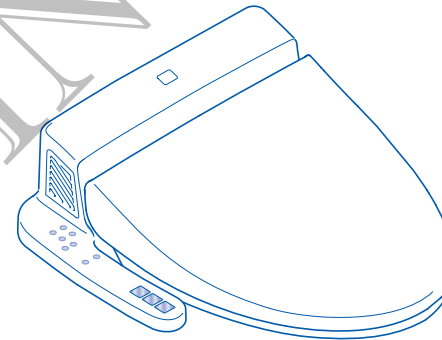


# TOTO

## Washlet® C110

SW524 (Elongated Type)

SW523 (Round Type)



# TOTO

1155 Southern Road  
Morrow, GA 30260  
(770) 282 8686

For your safety, be sure to inspect your Washlet C110 occasionally.

- Is the power plug abnormally hot?
- Is the power plug covered with dust?
- Is the outlet loose?
- Is your Washlet operating differently than usual?

\* In case anything is abnormal, contact TOTO USA to prevent a fire or an electrical shock.

2008.10.31  
D08248-2

# Instruction Manual

## washlet®

Important Safety Instructions . . . . .	2	Introduction
Grounding Instructions . . . . .	6	
Operational Instructions . . . . .	7	
Performance Features . . . . .	8	
Parts and Features . . . . .	9	
Before Using the Washlet® . . . . .	10	

How to Use the Washlet® . . . . .	11	Operation
For Best Results . . . . .	12	
● Adjusting the Temperature . . . . .	12	
● Turning Off the Water or Seat Heaters . . . . .	13	
Energy-Saving Features . . . . .	14	
● Timer Energy Saver . . . . .	14	
● Auto Energy Saver . . . . .	15	

Caring for your Washlet® . . . . .	17	Maintenance
● Before Cleaning the Washlet® . . . . .	17	
● Daily Care and Maintenance . . . . .	17	
● Thorough Cleaning of the Product . . . . .	18	
● Cleaning the main unit, toilet seat and Lid . . . . .	18	
● Cleaning the area between the main unit and the toilet bowl . . . . .	20	
● Periodic Cleaning of the Product . . . . .	20	
● Cleaning the power supply plug . . . . .	20	
● Cleaning the wand . . . . .	21	
● Cleaning the water filter with drain valve . . . . .	22	

Preventing Damage Due to Frozen Water Pipes . . . . .	24	Troubleshooting
● When there is a risk of frozen water pipes . . . . .	24	
● When not using the Washlet over an extended period of time . . . . .	25	
● Re-supplying water to the unit after the pipes have been drained . . . . .	26	
Troubleshooting . . . . .	27	
Specifications . . . . .	30	

Limited warranty . . . . .	31
----------------------------	----

\* Thank you for your recent purchase of the TOTO Washlet. Please read the enclosed information to ensure the safe use of your product.

\* Be sure to read this Instruction Manual before using your product and keep it in a safe place for future reference.

# Important Safety Instructions

Be sure to read the following safety instructions and use the product only as described in this manual. Please follow basic safety instructions to ensure the safe use of your product.

## READ ALL INSTRUCTIONS BEFORE USING

The following symbols are used to indicate important safety instructions for the use of the product.

Symbol	Definition
	The  symbol indicates a prohibited use of the product. The symbol to the left means "Do not disassemble this product".
	This symbol is used to indicate a required step in the use of this product. The symbol to the left means "Always follow this precaution".

<b>DANGER</b>							
Avoid direct contact with water	<b>Do not wash the main unit or electrical plug with water or detergent.</b> <ul style="list-style-type: none"> <li>● Doing so may cause fire or electrical shock.</li> </ul>						
Do not use this product in wet or damp places	<b>Do not install the product in a room where the humidity can exceed 90% RH.</b> <ul style="list-style-type: none"> <li>● Doing so may cause fire or electrical shock.</li> </ul>						
Do not disassemble	<b>Never disassemble, repair or modify this product.</b> <ul style="list-style-type: none"> <li>● Doing so may cause fire or electrical shock.</li> </ul>						
Do not handle the electrical plug with wet hands	<b>Do not handle the electrical plug with wet hands.</b> <ul style="list-style-type: none"> <li>● Doing so may cause electrical shock.</li> </ul>						
	<b>Do not continue to use the product if it is malfunctioning.</b> <ul style="list-style-type: none"> <li>● If the following occurs, disconnect the electrical plug from the wall outlet, and close the water shutoff valve to prevent the water flow.                     <div style="background-color: #0056b3; color: white; padding: 5px; margin-top: 5px;"> <p>Possible malfunctions:</p> <table border="0" style="width: 100%; font-size: small;"> <tr> <td>● Water leaks from either the main unit or the water pipes.</td> <td>● The product feels extremely hot.</td> </tr> <tr> <td>● The product makes a strange noise or emits a strange odor.</td> <td>● The product is cracked or broken.</td> </tr> <tr> <td></td> <td>● The product is smoking.</td> </tr> </table> </div> </li> <li>● Continued use of a product that is malfunctioning may result in fire or electrical shock or cause water damage.</li> </ul>	● Water leaks from either the main unit or the water pipes.	● The product feels extremely hot.	● The product makes a strange noise or emits a strange odor.	● The product is cracked or broken.		● The product is smoking.
● Water leaks from either the main unit or the water pipes.	● The product feels extremely hot.						
● The product makes a strange noise or emits a strange odor.	● The product is cracked or broken.						
	● The product is smoking.						

<b>DANGER</b>	
	<b>Avoid damaging the electrical cord or toilet seat cord.</b> <div style="background-color: #0056b3; color: white; padding: 5px; margin-top: 5px;"> <p>Do not crack, bend, twist or pull the cords. Do not treat or heat the cords or place heavy objects on top of them.</p> </div> <ul style="list-style-type: none"> <li>● Use of damaged electrical cords may result in a short circuit, electrical shock or fire.</li> </ul>
	<b>Do not use a loose or faulty electrical outlet.</b> <ul style="list-style-type: none"> <li>● Doing so may cause fire or electrical shock.</li> </ul>
	<b>This product should be used with 120V, 60Hz electrical current only.</b> <ul style="list-style-type: none"> <li>● Use of multi-prong outlet adapters with this product may result in overheating or fire.</li> </ul>
	<b>Only use tap water or potable water (ground water).</b> <ul style="list-style-type: none"> <li>● Use of water that is not safe for drinking may cause irritation or injury to the skin.</li> </ul>
	<b>Improper use of heated toilet seats can result in a low-grade burn.</b> <ul style="list-style-type: none"> <li>● When sitting on the heated toilet seat for extended periods of time, turn the temperature setting to OFF.</li> <li>● Make sure that the temperature setting for the heated toilet seat has been set to the OFF position before being used by the following:                     <div style="border: 1px solid black; padding: 5px; margin-top: 5px;"> <ul style="list-style-type: none"> <li>- Young children, the aged or users who cannot perform appropriate setting of the temperature.</li> <li>- Sick or disabled users who do not have freedom of movement.</li> <li>- Users who are on medication that causes drowsiness.</li> <li>- Users that have consumed a great deal of alcohol or who are extremely tired and may fall asleep while using the toilet.</li> </ul> </div> </li> </ul>
	<b>Periodically remove dust and dirt from the electrical plug and make sure it is securely plugged into the wall outlet.</b> <ul style="list-style-type: none"> <li>● Failure to do so may result in electrical shock or fire.</li> <li>● Pull the plug out from the outlet and wipe clean with a dry cloth.</li> </ul>
Removal of the electrical plug	<b>When removing the main unit for cleaning, be sure to unplug the electrical cord from the wall outlet to prevent the risk of electrical shock.</b>
Grounded Outlet	<b>Make sure that a properly grounded (3 prong) outlet has been installed.</b> <ul style="list-style-type: none"> <li>● Failure to install in a grounded outlet could result in electrical shock in the event of a malfunction or short circuit.</li> </ul>



## WARNING

**Use only a mild dish detergent diluted with water to clean your Washlet. Do not use the following to clean the Washlet.**

Toilet bowl cleaner, household cleaner, benzene, paint thinner, powdered cleanser, or nylon scrubbing pads.

- Use of any cleaning product other than diluted dish detergent may crack the plastic and cause injury to the user or may damage the hose resulting in water leakage.

**Do not stand on or place heavy objects on top of the toilet.**

- To avoid injury or damage to the toilet unit, do not stand on or place heavy objects on top of the toilet.

**Do not raise the toilet seat or lid while objects are resting on top of the toilet.**

- Lifting the toilet seat/cover with objects resting on them could cause the main unit to become detached, resulting in injury.

**Do not bend or crush the water hose.**

- Bending or crushing the water hose may result in water leakage.

**To prevent sudden water leakage, do not remove the water filter with drain valve when the water shutoff valve is open.**

- Refer to Page 22 for instructions on cleaning the water filter.
- Do not install base plate to Washlet when not attached to the toilet.  
\* Fire or damage may result.

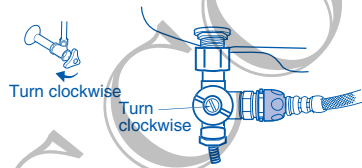
**Do not use this product while smoking.**

- To avoid the risk of fire, do not smoke while using this product.

**When not using the Washlet over an extended period of time, drain the water out of the hose and pull the electrical plug from the wall outlet.**

- Water left standing in the toilet hose over an extended period of time could cause irritation to the skin.  
Refer to Page 25 for instructions on draining the hose.

**If water leakage should occur, always close the water shutoff valve and then turn off the water.**



**When installing the water drain valve with water filter, make sure that it is securely tightened in its proper position.**

- Improper tightening of the water valve may result in water leakage.

**Preventing damage due to frozen pipes and hoses.**

- Frozen water pipes will cause the Washlet main unit and the pipes to break, resulting in water leakage.
- Regulate the room temperature to prevent the pipes and hoses from freezing during cold months.

Refer to Page 24 for instructions on how to prevent frozen pipes.



## DANGER

To reduce the risk of electrocution:

1. Do not use while bathing.
2. Do not place or store the product where it can fall or be pulled into the tub or sink.
3. Do not place in or drop into water or other liquid.
4. Do not reach for the product when it has fallen into water. Unplug immediately.



## WARNING

To reduce the risk of burns, electrocution, fire or injury to persons:

1. Close supervision is necessary when this product is used by, on, or near children or invalids.
2. Use this product only for its intended use as described in this manual. Do not use attachments not recommended by the manufacturer.
3. Never operate this product if it has a damaged cord or plug, is not working properly, has been dropped or damaged, or has been dropped in water. Return the product to a service center for examination and repair.
4. Keep cord away from heated surfaces.
5. Never block the air openings of the product or place it on a soft surface, such as a bed or couch, where the air openings may be blocked. Keep the air openings free of lint, hair, and other similar items.
6. Never use while sleepy or drowsy.
7. Never drop or insert any object into any opening or hose.
8. Do not use outdoors. Do not operate where aerosol (spray) products are being used or where oxygen is being administered.
9. Connect this product to a properly grounded outlet only. See Grounding Instructions.
10. Reservoir should be filled with water only.

Save these instructions.

## Grounding Instructions

This product should be grounded. In the event of an electrical short circuit, grounding reduces the risk of electric shock by providing an escape wire for the electrical current. This product is equipped with a cord having a grounding wire with a grounding plug. The plug must be plugged into an outlet that is properly installed and grounded.



**DANGER** - Improper use of the grounding plug can result in a risk of electric shock.

If repair or replacement of the cord or plug is necessary, do not connect the grounding wire to either flat blade terminal. The wire insulation having with outer surface that is green or green with yellow stripes contains the grounding wire.

Check with a qualified electrician or serviceman if the grounding wire instructions are not completely understood, or if in doubt as to whether the product is properly grounded.

This product is factory equipped with a specific electric cord and plug to permit connection to a proper electric circuit. Make sure that the product is connected to an outlet having the same configuration as the plug. No adapter should be used with this product. Do not modify the plug provided - if it will not fit in the outlet, have the proper outlet installed by a qualified electrician. If the product must be reconnected for use on a different type of electric circuit, the reconnection should be made by qualified service personnel.

If it is necessary to use an extension cord, use only a three wire extension cord that has a three blade grounding plug, and a three-slot receptacle that will accept the plug on the product. Replace or repair a damaged cord.



## Operational Instructions

Always follow these precautions to ensure the safe use of your product.

### Do not wipe the toilet bowl, seat, or lid with a dry cloth or toilet paper.

- Use of a dry cloth or toilet paper to wipe the toilet bowl, seat or lid will scratch the surface.

Refer to Page 17 for instructions on how to care for your Washlet.

Two reasons we should probably not make this recommendation for the toilet bowl:

- 1) The toilet bowl is separate from the Washlet and these instructions are supposed to be for the Washlet.
- 2) I am not certain that a dry cloth or toilet paper can really damage a ceramic glaze.

### Do not expose the product directly to sunlight.

- Color change, irregular temperature, malfunction and sensor malfunction may result.

### Avoid getting urine on the Washlet main unit or the wand as this may result in the product malfunctioning.

### Do not cover seat sensor.

- The Washlet may not respond appropriately to commands.

### Do not lean back against the lid

- Leaning against the toilet seat cover may damage or break it.

### To avoid electrical damage to your unit, be sure to unplug the electrical plug during lightning storms.

### Do not use the Washlet near a radio or stereo equipment.

- Use of the Washlet near a radio, etc. will cause electrical interference.

# Performance Features

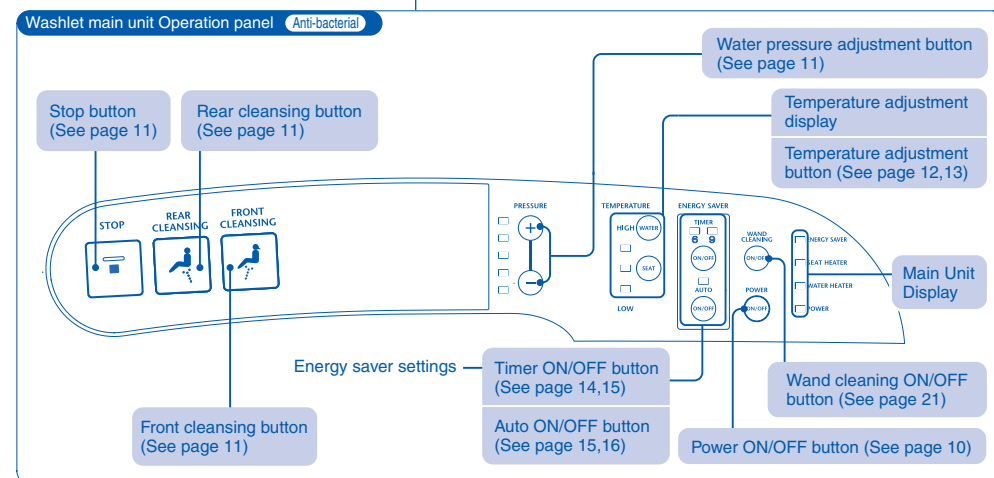
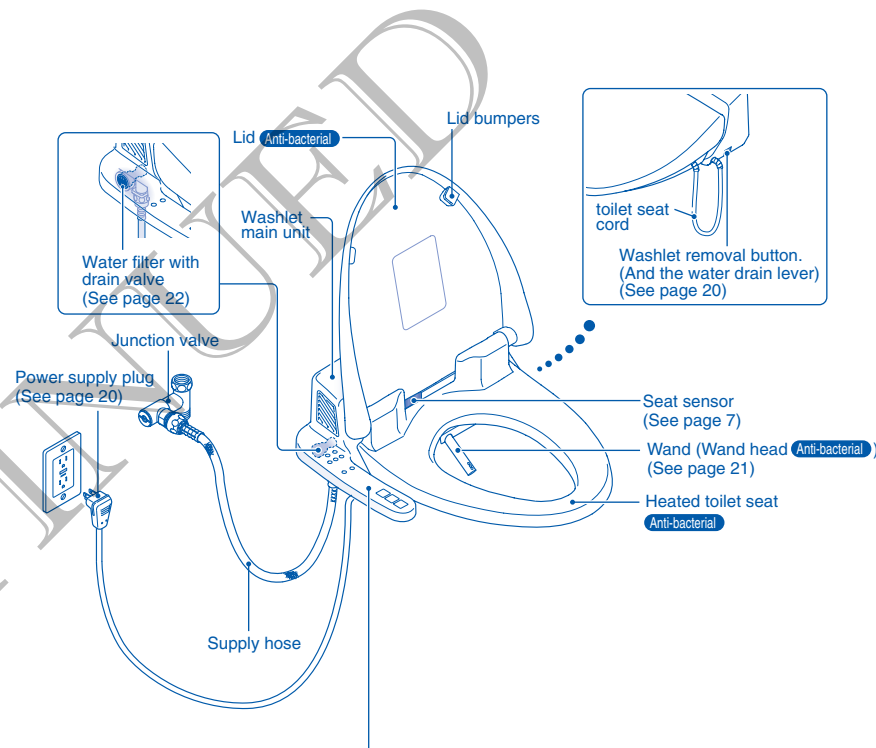
Washlet Functions		Page
<b>Rear Cleansing</b>	<ul style="list-style-type: none"> <li>Washes the rear portion of the body.</li> </ul>	11
<b>Front Cleansing</b>	<ul style="list-style-type: none"> <li>Front wash for ladies.</li> </ul>	
<b>Water pressure adjustment</b>	<ul style="list-style-type: none"> <li>The water pressure strength can be adjusted.</li> </ul>	11

Amenities		Page
<b>Heated toilet seat</b>	<ul style="list-style-type: none"> <li>Warms the toilet seat.</li> </ul>	—
<b>Temperature adjustment</b>	<ul style="list-style-type: none"> <li>Adjusts the temperature of the water, toilet seat and warm air dryer.</li> </ul>	12,13
<b>Seat sensor</b>	<ul style="list-style-type: none"> <li>The sensor detects when someone sits on the toilet seat.</li> </ul>	—
<b>Soft Close</b>	<ul style="list-style-type: none"> <li>Gently lowers the toilet seat and lid.</li> </ul>	—

Energy Saving Features		Page
<b>Timer Energy Saver</b>	<ul style="list-style-type: none"> <li>Conserve energy by pre-setting the timer to turn off the toilet seat and water heater for the same time period each day. (Can be set for 6 or 9 hour periods of time)</li> </ul>	14
<b>Auto Energy Saver</b>	<ul style="list-style-type: none"> <li>Records information about when the Washlet is being used, determines when it is least likely to be used, and reduces the seat temperature to save energy during that time.</li> </ul>	15
<b>Power ON/OFF</b>	<ul style="list-style-type: none"> <li>Use the Power button to turn off the Washlet, stop the toilet seat from warming and conserve energy.</li> </ul>	10

Sanitary Features		Page
<b>Removable toilet seat and lid</b>	<ul style="list-style-type: none"> <li>The toilet seat and lid can be removed for easy cleaning.</li> </ul>	18, 19
<b>One-touch removal of the Washlet main unit</b>	<ul style="list-style-type: none"> <li>The Washlet main unit can be removed for easy and thorough cleaning with a simple "one-touch" mechanism.</li> </ul>	20
<b>Anti-bacterial feature</b>	<ul style="list-style-type: none"> <li>The toilet seat and buttons have been treated with an anti-bacterial finish.</li> </ul>	9
<b>Wand Self Cleaning</b>	<ul style="list-style-type: none"> <li>Before and after flushing, the wand tip is automatically cleaned very thoroughly.</li> </ul>	—
<b>Full Wand Cleaning</b>	<ul style="list-style-type: none"> <li>Each time the wand extends or stores itself, it is cleaned thoroughly.</li> </ul>	—
<b>Clean-coat wand</b>	<ul style="list-style-type: none"> <li>The wand is treated with smudge resistant coating.</li> </ul>	—
<b>"Wand Cleaning ON/OFF" button</b>	<ul style="list-style-type: none"> <li>The wand can be extended without spraying water for easier cleaning.</li> </ul>	21

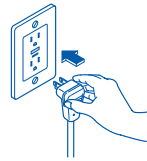
# Parts and Features



# Before Using the Washlet®

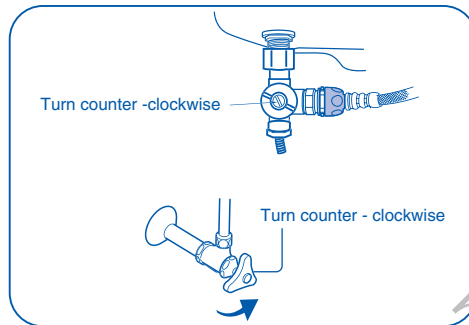
## Preparation

**1** Insert the power supply plug into the wall outlet.



**2** Open the water shutoff valve and junction valve.

- Use a flat head screwdriver to open the water shutoff valve.



**3** Check the [Washlet main unit operation panel].

- Are the "POWER" "WATER HEATER" and "SEAT HEATER" lights on the Washlet main unit operation panel on?

**Tip 1**

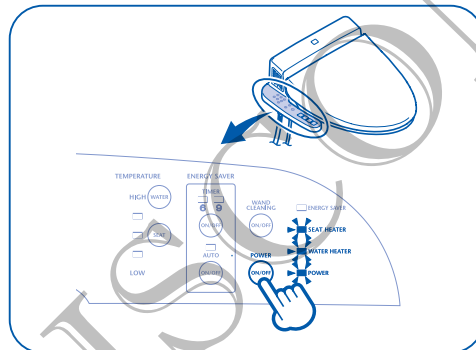
If the "POWER" light is not lit, then it won't be possible to use all of the functions.

(This excludes instances when an energy saver mode is in operation.

See page 14.)

Press the **POWER** button on the operation panel on the Washlet body.

(Then, the light will turn on.)

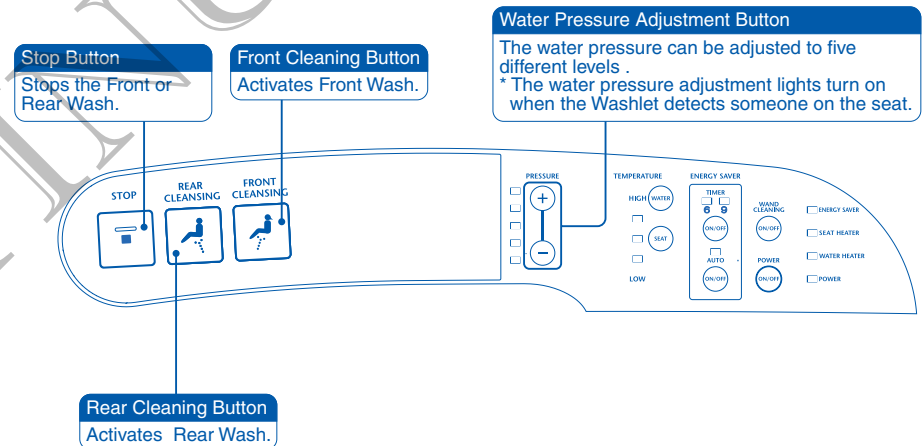


# How to Use the Washlet®

## Standard use

**1** Sit **Tip 2**  
The seat sensor becomes activated and all of the functions becomes ready for use.

**2** Wash **Tip 3**



**Stop Button**  
Stops the Front or Rear Wash.

**Front Cleaning Button**  
Activates Front Wash.

**Water Pressure Adjustment Button**  
The water pressure can be adjusted to five different levels.  
\* The water pressure adjustment lights turn on when the Washlet detects someone on the seat.

**Rear Cleaning Button**  
Activates Rear Wash.

### Useful Information

- Water comes out of the base of the wand while it is self-cleansing. The dripping water does not indicate a problem.
- As water is heated in the warm water tank it expands and may occasionally drip out of the wand. This occasional dripping does not indicate a problem.
- The Washlet only uses tap water or potable water (underground water).

**Tip 1** As for "ON/OFF" and temperature control of the toilet seat and water, please refer to the "Temperature Control Method" in page 12.

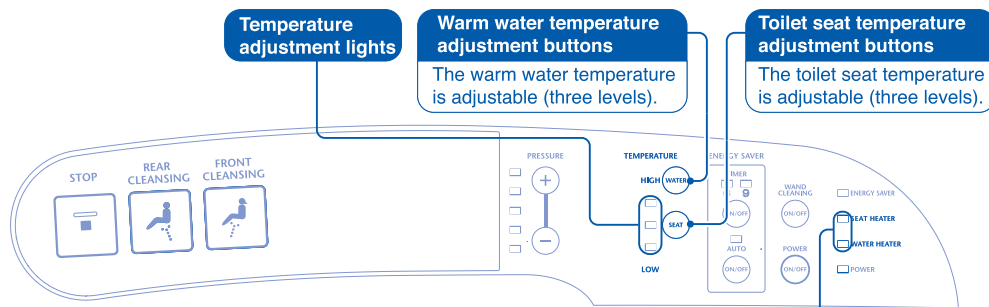
**Tip 2** Sit back on the toilet seat!  
By so doing, you can wash easily in position and water will not spatter.

**Tip 3** Since the warm water tank contains a limited amount of water, continuous use of the warm water cleansing feature may lower the water temperature.

# For Best Results

## Adjusting the Temperature

- The temperature of the cleansing water and of the toilet seat can be adjusted using the temperature adjustment buttons on the Washlet main unit operation panel. Set both to the desired temperatures.



### 1 Press the temperature adjustment button on the Washlet main unit operation panel.

- Press the button for either **WATER** or **SEAT** whichever temperature is to be changed.

Tip 1

The temperature adjustment light turns on and the current temperature level is displayed.

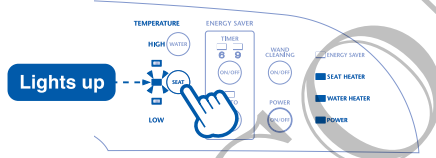
### 2 Press the temperature adjustment button repeatedly until the desired temperature level is reached.

Tip 2

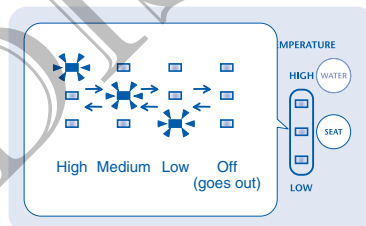
The temperature adjustment lights alternate each time the button is pressed.

**Main unit display**  
While in water temperature adjustment mode the Water Heater light will be on.  
While in seat temperature adjustment mode the Seat Heater light will be on.

[Example: Changing the toilet seat temperature]



[Temperature level switching]



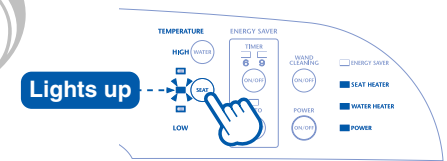
## Turning Off the Water or Seat Heaters.

### 1 Press the temperature adjustment button on the Washlet main unit operation panel.

- Press either the **WATER** or **SEAT** whichever is to be turned off.

The temperature adjustment light turns on and the current temperature level is displayed.

[Example: Turning off SEAT]



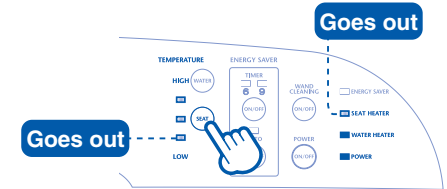
### 2 Press the temperature adjustment button repeatedly until the temperature adjustment lights are all turned off.

The temperature adjustment lights turn off and the water or seat heaters are turned off.

Tip 3

- To turn on the water or seat heaters again, press either the **WATER** button or **SEAT** button, whichever is to be turned on, until the temperature adjustment lights turn on.

Tip 4



Tip 1

- The temperature adjustment lamp serves as an indicator of the cleansing water temperature and toilet seat temperature. The temperature level is displayed only when the temperature adjustment button is pressed.

Tip 2

- The temperature adjustment lights will go out if the button is not pressed for 10 seconds during temperature adjustment. In that case, press the button again.

Tip 3

- The temperature adjustment lights goes out and the display lights also goes out.

Tip 4

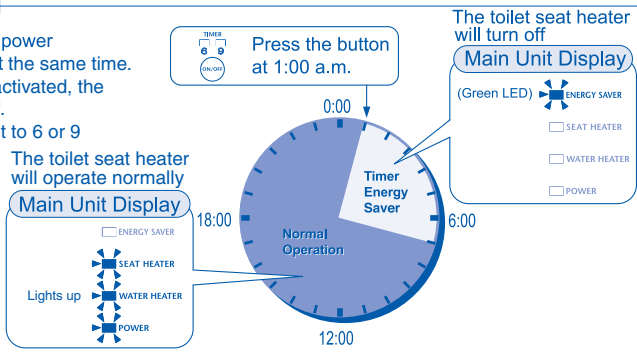
- The temperature adjustment lights and the display lights turn on.

# Energy-Saving Features

## Timer Energy Saver

### The Timer Energy Saver

- Once the settings are configured, power saving will take place every day at the same time. While the Timer Energy Saver is activated, the toilet seat heater will be turned off. The energy saving time can be set to 6 or 9 hours.
- Example: Set the Timer Energy Saver to be on from 1:00 a.m. until 7:00 a.m. (6 hours)

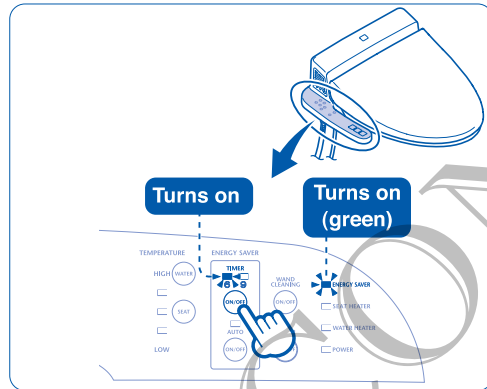


Example: When saving power from 1:00 a.m. until 7:00 a.m. (six hours)

- Press the button on the Washlet main unit operation panel at the time you desire to begin saving energy. (1:00 a.m.)

### Energy Saving Will Begin

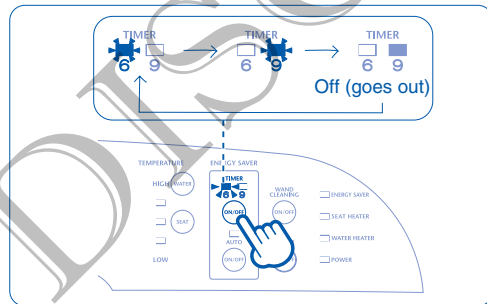
- The "TIMER" light on the Washlet main unit operation panel turns on. **Tip 1**
- When the Timer Energy Saver is on, the "ENERGY SAVER" LED (green) will light up on the Washlet main unit operation panel.



## Changing the Energy Saving Period.

- Press **Tip 2**

- Select the amount of time to set the Timer Energy Saver for. The lights alternate each time the button is pressed.
- When you change the energy saver time (6 or 9 hrs), the timer start time is reset.



**Tip 1** The Washlet can still be used, while the Timer Energy Saver is activated. If someone sits on the toilet seat while the Timer Energy Saver is activated, the toilet seat heater will turn on temporarily. It takes about 15 minutes for the seat to heat up.

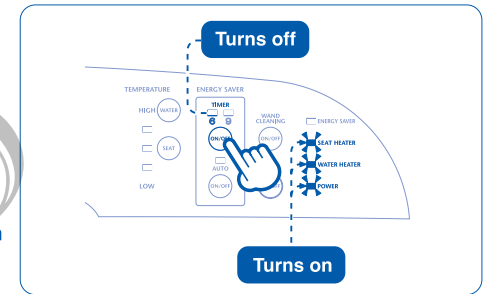
**Tip 2** When you want to change the Timer Energy Saver start time, first shut off the Timer Energy Saver and then press the button once again.

## Turning Off the Timer Energy Saver

- Press until the "TIMER" light turns off.

### Timer Energy Saver is turned off

- The "POWER", "WATER HEATER" and "SEAT HEATER" lights on the Washlet main unit operation panel turn on.

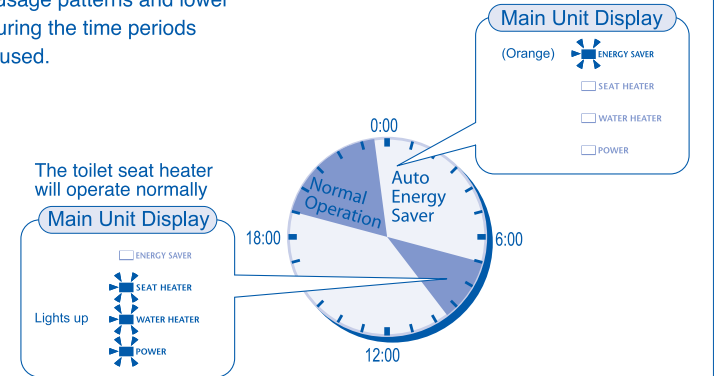


## Auto Energy Saver

### The Auto Energy Saver

- The Washlet will learn usage patterns and lower the seat temperature during the time periods where it is infrequently used.

The toilet seat temperature will be lowered.

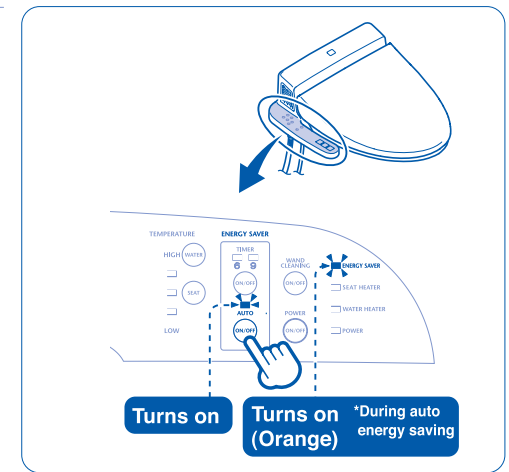


- Press the button on the Washlet main unit operation panel.

### The toilet seat temperature automatically decreases when the Auto Energy Saver is turned on

**Tip 3**

- The "AUTO" light on the Washlet main unit operation panel turns on. During times when the toilet is used infrequently, the "ENERGY SAVER" light (orange) turns on.



- Tip 3** It takes a few days for the Washlet to identify the times when the toilet is used infrequently. During this period, the Auto Energy Saver mode goes into effect gradually.
- The Washlet can be used even Auto Energy Saver is activated. Although the toilet seat temperature is set at about 79°F (26°C) while Auto Energy Saver is activated the toilet seat will be temporarily become warmer if you sit on the toilet seat.

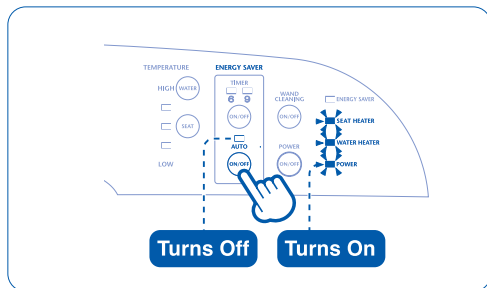


## Turning Off the Auto Energy Saver

Press 

Auto energy saving is turned off.

- The "AUTO" light on the Washlet main unit operation panel turns off.
- The "POWER", "WATER HEATER" and "SEAT HEATER" lights turn on.



## When using both Time Energy Saver and Auto Energy Saver

- The buttons can be pressed in any order.

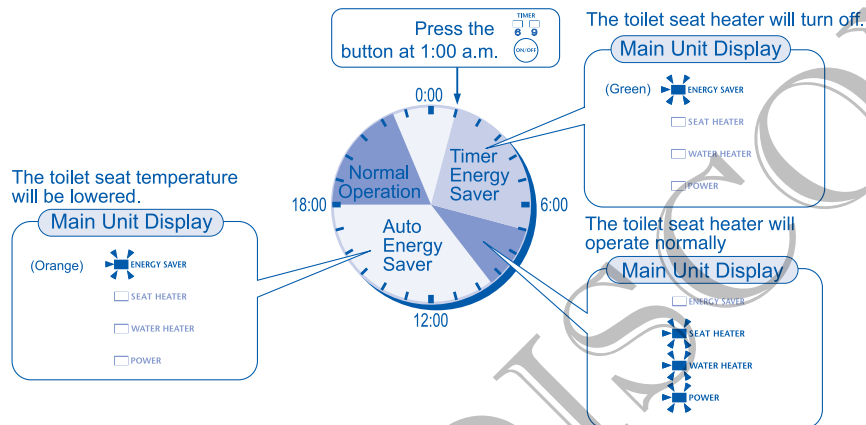
Press the  at the time you want to begin saving energy.

- See page 14 for Timer Energy Saver.

Press 

- See page 15 for Auto Energy Saver.

For example, energy saving as follows

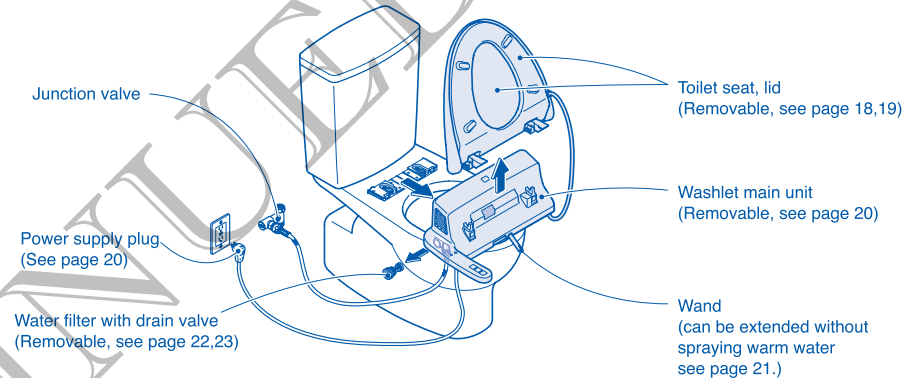


- When the Timer Energy Saver is not activated, the Auto Energy Saver will be operational.

## Caring for your Washlet®

### Before Cleaning the Washlet®

Each component can be disassembled for a thorough cleaning.



### Daily Care and Maintenance

Cleaning the Washlet main unit, toilet seat and lid.

#### Wipe the components with a soft damp cloth.

- Wet and wring out a soft cloth for wiping the surface of the components.
- Do not use a dry cloth or toilet tissue to wipe plastic components as this may scratch the surfaces.
- Be careful not to get water on the electrical components. Always wipe up any excess detergent and water that gets into crevices.
- Please keep the seat sensor clean! Many of the functions will not work if it becomes dirty.

#### Cleaning very dirty components.

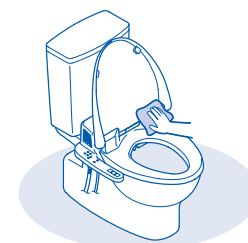
- Wet a soft cloth with diluted dish detergent (mild alkaline) and wipe down the Washlet surfaces.
- Then wipe off the detergent solution with a damp cloth.

#### If toilet bowl cleaner gets on the plastic components.

- Wipe the component surface with a wet cloth and wipe dry.

#### When cleaning the toilet bowl with cleaner

- After using a toilet bowl cleaner or disinfectant to clean the toilet bowl, flush the bowl right away (within 3 minutes) and leave the toilet seat and lid open. Wipe away any cleaner that spills onto the toilet seat. (To prevent evaporated gas from the toilet bowl cleaner from getting into the main unit of the Washlet.)



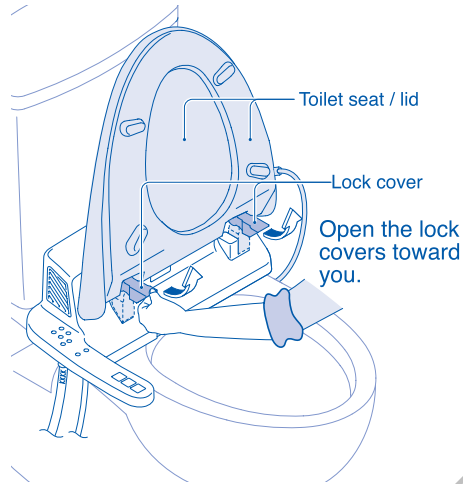
## Thorough Cleaning of the Product

### Cleaning the Washlet main unit, toilet seat and lid.

The toilet seat and lid are removable, so that they can be cleaned thoroughly.

#### 1 Disconnect the power supply plug.

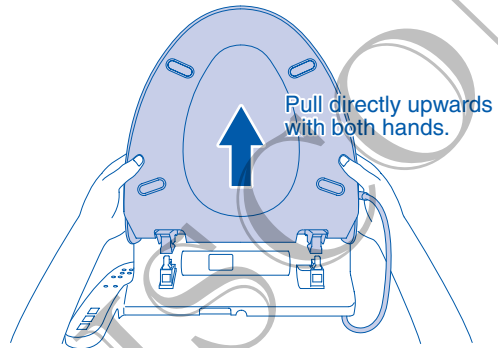
- For safety, disconnect the power supply plug before removing the toilet seat and lid. Also, be careful not to splash water on the disconnected power supply plug.



#### 2 Open the left and right lock covers by opening the toilet seat and lid.

#### 3 Pull the toilet seat and lid directly upwards with both hands.

- The toilet seat cord cannot be disconnected.
- Do not pull the toilet seat and toilet lid up at an angle or apply excessive force to them. (They may break.)



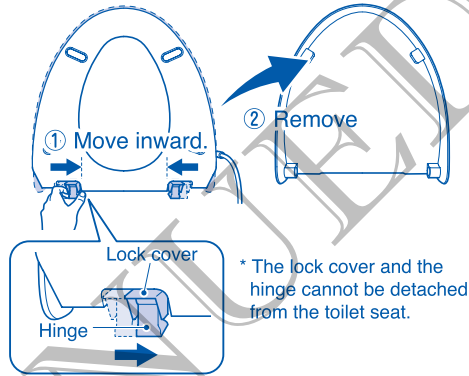
#### 4 Clean the Washlet main unit, toilet seat and lid.

Follow the procedures shown in "Daily Care and Maintenance" on page 17.

The lid can be detached from the toilet seat!

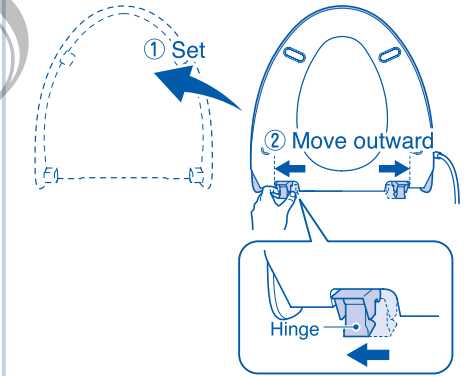
#### [How to remove]

- Move the left and right hinges inward.
- The toilet seat and lid can now be detached from each other.



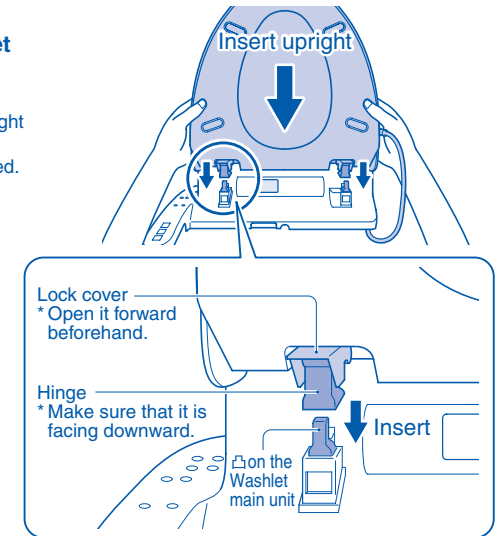
#### [How to reinstall]

- Set the toilet seat onto the lid.
- Move the left and right hinges outward.

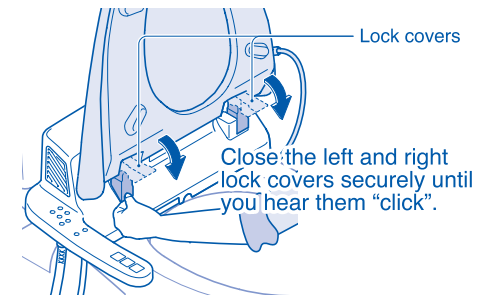


#### 5 Align the left and right hinges with the protrusion (凸) on the Washlet main unit and insert them.

- Face the left and right hinges downward.
- Prevent the toilet seat cord from being caught between the toilet bowl and the toilet seat.
- Do not install with the toilet seat cord twisted.



#### 6 Close the lock covers.



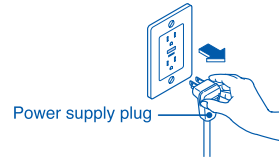
#### 7 Insert the power plug.

## Cleaning the area between the Washlet main unit and the toilet bowl. (Perform once a month.)

- The Washlet main unit can be removed for easier cleaning of the toilet bowl and bottom of the Washlet main unit.

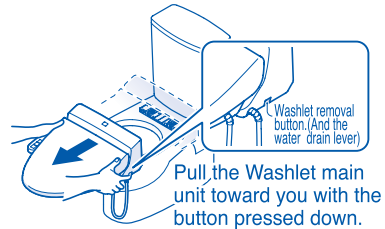
### 1 Pull the power supply plug from the wall outlet.

- Take care not to get water on the power supply plug.



### 2 Remove the Washlet main unit.

- Press down on the Washlet removal button (and the water drain lever) located on the right side of the Washlet main unit and pull it forward.
- \* Do not pull the connection hose or power cord with force when removing the Washlet main unit.

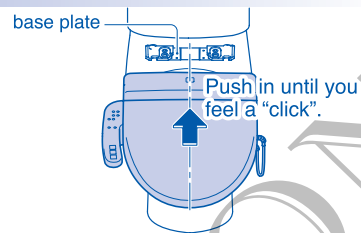


### 3 Clean the Washlet main unit.

- Refer to the "Daily Care and Maintenance" instructions on page 17.

### 4 Reattach the Washlet main unit.

- Align the center of the Washlet main unit with that of the base plate.
  - Slide the Washlet main unit along the toilet bowl surface and push it in securely until you hear it click.
- \* The Washlet will not work unless the Washlet main unit is securely pushed into the base plate.



### 5 Insert the power supply plug into the wall outlet.

## Periodic Cleaning of the Product

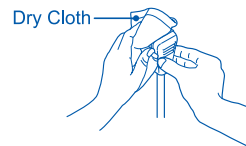
### Cleaning the power supply plug.

- Please check the power supply plug around once a month to make sure that it is in proper working condition.

### 1 Pull the power supply plug from the wall outlet.

### 2 Clean.

- Remove any dust that is on the blades of the plug using a dry cloth.



### 3 Insert the power supply plug into the wall outlet.

- Securely plug in the power cord so that it touches the base.

**Tip 1** If you pull the Washlet removal button (and the water drain lever) when the Washlet is dismantled, water drains out of the product. (About 1.2L)  
Do not pull the Washlet removal button (and the water drain lever) unless you want to drain the water.

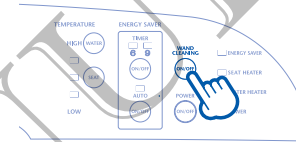
## Cleaning the wand.

- The wand can be extended without spraying warm water, which makes cleaning easy.

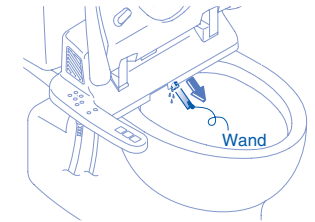
### 1 Extend the wand.

- Push the button on the top unit controller.

The wand is extended

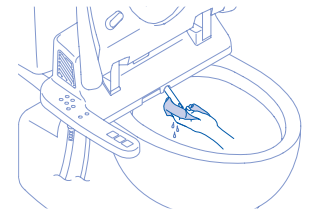


- The wand will automatically retract after 5 minutes.



### 2 Clean the wand.

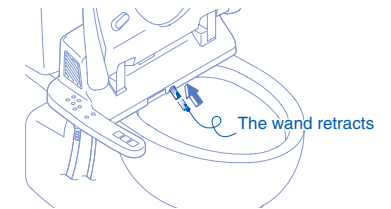
- Wipe the wand clean with a soft damp cloth.
- \* Do not apply force when pushing or pulling the wand as this may damage the mechanism.



### 3 Store the wand.

- Push the ON/OFF button again.

The wand retracts and is automatically cleaned

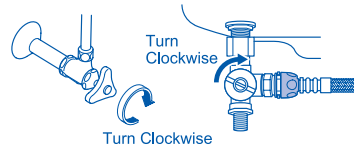


## Cleaning the Water filter with drain valve.

- If you feel as though the water pressure has weakened, clean the water filter with drain valve.

### 1 Turn off the water shut off valve and the junction valve.

- Please close the water shut off valve and the junction valve with a flathead screwdriver.
- Turn the toilet tank lever and run the water out of the tank. (This will relieve pressure in the water supply hose.)
- Press to let the nozzle extend and press again (to release the pressure from the water supply pipe).



#### Caution

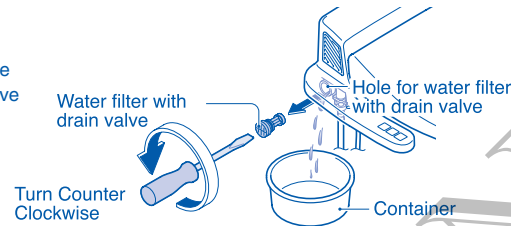


Prohibited

- Do not remove the water filter with drain valve when the water shut off valve and the junction valve are opened.
- Other wise, water will gush out.

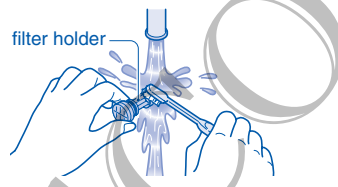
### 2 Remove the water filter with drain valve.

- After loosening the water filter with drain valve with a flat head screwdriver pull on it to remove it from the main unit.



### 3 Clean.

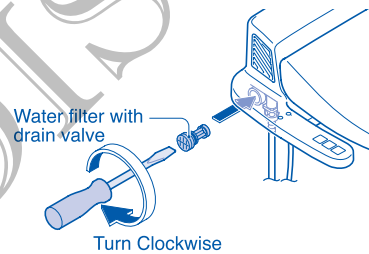
- Wash and remove sediment blocking the filter with water.
- For fine sediment, use a toothbrush or similar implement in order to remove everything completely. Please use a cotton swab or similar implement to remove sediment that is caught in the hole for the water drain valve (with water filter).



Tip 1

### 4 Install the water filter with drain valve.

- Push the water drain valve (with water filter) into place and tighten securely using a flathead screwdriver.



#### Caution



Mandatory

- Tighten the water filter with drain valve securely.
- Failure to tighten it securely could result in leaks.

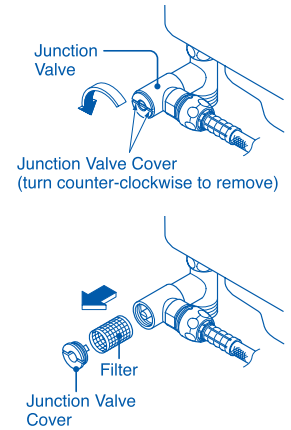
#### Tip 1

Cleaning the filter

- Please use plain water (without detergent) for washing.
- Do not remove or break the filter.
- If the filter becomes extremely dirty, we recommend that you replace it with a new one.

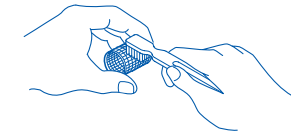
### 5 Remove the water filter.

- To access the "junction valve" filter, the junction valve cover must be removed. Use a large flathead screwdriver or coin and turn the valve cover counter-clockwise.
- Place a container underneath the junction valve. After removing the junction valve cover, gently pull the filter out.



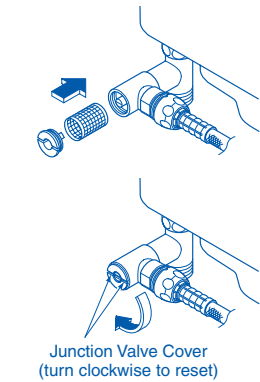
### 6 Clean the filter.

- Remove sediment from the filter using a toothbrush.



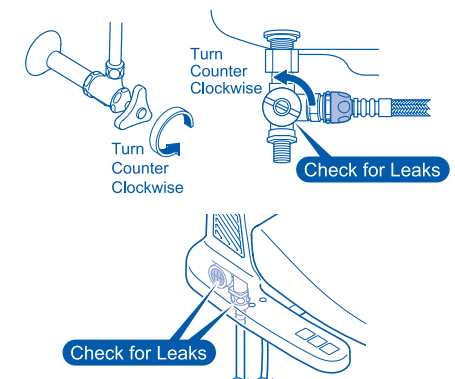
### 7 Insert the junction valve cover with filter.

- Push the junction valve cover with filter into the junction valve and turn it clockwise.
- Be sure to tighten it securely.



### 8 Open the water shut off valve and junction valve.

- Open the junction valve with a flathead screwdriver.
- Make sure that there is no water leaking from the water filter with drain valve or from the junction valve cover.



# Preventing Damage Due to Frozen Water Pipes

## When There is a Risk of Frozen Water Pipes Tip 1

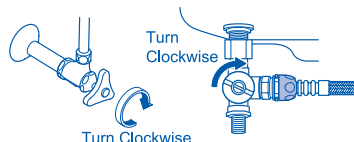
Please keep the bathroom interior warm when the outdoor temperature is expected to be below freezing. When that is not possible, please remove the water from the system. When there is a risk of freezing conditions, please prevent it by taking the following steps. If the product freezes, the unit could be damaged, resulting in leaks.

**Please take note!** Before doing any freeze prevention measures, please close the toilet seat and lid.

## Water Removal

### 1 Removing water from the toilet tank.

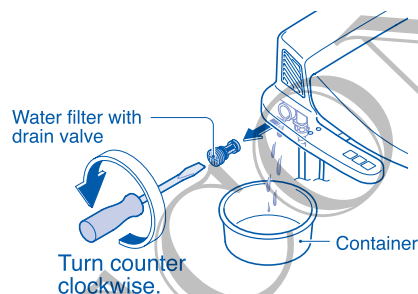
- Turn off the water supply by turning off the water shut off valve and the junction valve.
  - Turn off the junction valve with a flathead screwdriver.



- Turn the toilet tank lever and remove the water from the tank. Tip 2

### 2 Drain the water from the pipes.

- Press on the Washlet main unit operation panel. (Drain the residual water from inside of the product.)
- Remove the water filter with drain valve.

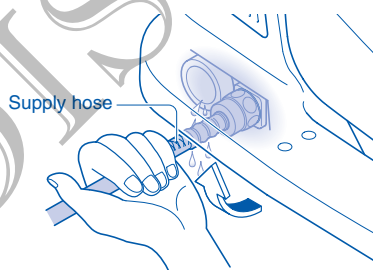


#### Caution



- Do not remove the water filter with drain valve when the water shut off valve and the junction valve are opened.
- Otherwise, water will gush out.

- Drain the water, which should be about 1 fl. oz. (30ml), from inside of the supply hose by keeping the hose in a horizontal position.
- Press again. (Put the nozzle back in place.)



**Tip 1** When freezing temperatures are anticipated. Please do not use the power saving features. The product could be damaged by freezing.

- See page 15 about stopping the Time Energy Saver.
- See page 16 about stopping the Auto Energy Saver.

**Tip 2** Please keep the toilet tank lever turned until the tank has completely emptied.

- Reinstall the water filter with drain valve.

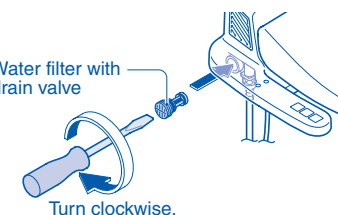
#### Caution



Mandatory

- Tighten the water filter with drain valve securely.
- Failure to tighten it securely could result in leaks.

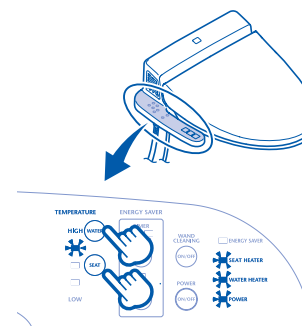
Water filter with drain valve



Turn clockwise.

### 3 Keep the inside of Washlet warm.

- Make sure that the "POWER" light on the Washlet main unit operation panel is lit and set the WATER and SEAT temperatures to "HIGH", respectively.
- Close the lid.



## When Not Using the Washlet Over an Extended Period of Time

When not using the Washlet for extended periods, changes in the water could cause skin inflammation. There is also a chance that the product could freeze, so please remove the water. Tip 3

## Removing the Water

### 1 Removing water from the toilet tank. See Page 24

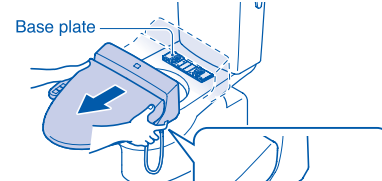
### 2 Drain the water from the pipes. See Page 24

### 3 Pull the power supply plug from the wall outlet.

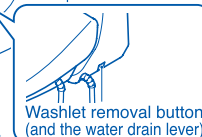
- Be sure to unplug the power cord before removing the Washlet main unit from the toilet.

### 4 Remove the Washlet main unit.

- Place the detached Washlet main unit on the front side of top of the toilet bowl.



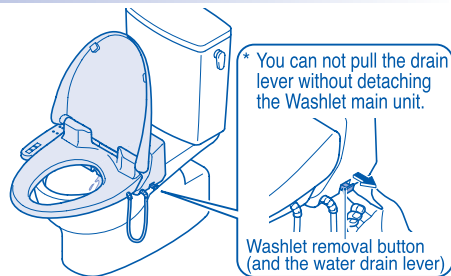
\* Press down on the Washlet removal button (and the water drain valve) locked on the right side of the Washlet main unit and pull it forward.



**Tip 3** When leaving a site for the winter... When using at a cabin or other location... Please remove the water! There can be severe cold spells during wintertime absences. Please be sure to remove the water in order to avoid freezing.

## 5 Drain the water from inside of the Washlet main unit by pulling the Washlet removal button (and the water drain lever).

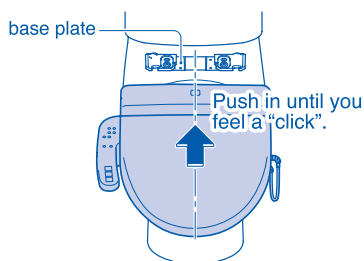
- Water flows out from the side of the nozzle. Drain the water into the toilet bowl. It takes about three minutes to drain the water completely.



## 6 Put the Washlet removal button (and the water drain lever) back in place.

## 7 Reattach the Washlet main unit.

- Align the center of the Washlet main unit with that of the base plate.
  - Slide the Washlet main unit along the toilet bowl surface and push it in securely until you hear it click.
- \* The Washlet will not work unless the Washlet main unit is securely pushed into the base plate.

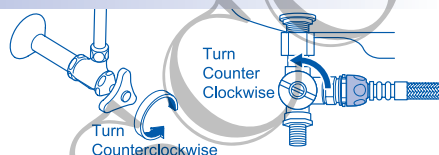


## 8 Pour antifreeze liquid into the toilet bowl.

### Re-supplying Water To the Unit After the Pipes Have Been Drained

## 1 Open up the water shut off valve and the junction valve.

- Open the junction valve with a flathead screwdriver. Confirm that no water is leaking from the Washlet main unit or hoses.



## 2 Insert the power supply plug into the wall outlet.

## 3 Let the water flow out from the nozzle.

Tip 1

- Cover the seat sensor with a piece of white paper and let the water flow out from the nozzle for about two minutes by pressing . (It takes about one minute to discharge the water from the nozzle. Collect the discharged water in a paper cup, etc.)

Tip 1 If no water flows out because the remaining water froze, warm the inside of the toilet and also warm the supply hose and the water shutoff valve using a cloth soaked in hot water.

# Troubleshooting

Please check the following before calling for service.

If that doesn't solve the problem, please call TOTO U.S.A., Inc. Technical Support at (888) 295-8134

**Caution**

Mandatory

Whenever there is a leak, turn off the water shut off valve and the junction valve to stop the supply of water.

■ Please check the following before requesting repairs.






### General

Problem	Check (Cause)	Response
Doesn't work at all.	Is there a power outage or is the circuit breaker out?	Wait until the power is restored. Turn the circuit breaker back ON.
	Are all of the LEDs on Washlet main unit operation panel out?	Push the  button on the Washlet main unit operation panel. <a href="#">Page 10</a>
	Is the Washlet main unit lined up properly with the base plate?	Detach the Washlet main unit from the base plate and reinstall. <a href="#">Page 20</a>




### Rear Cleansing / Front Cleansing

Problem	Check (Cause)	Response
Water will not spray.	Has water stopped flowing from the main supply?	Push the  button and wait until the main water supply is restored.
	Are the water shut off valve and the junction valve closed?	Open the water shutoff valve and the junction valve. <a href="#">Page 10</a>
	Is the seat sensor working properly?	Change the way you sit and / or hold your arms near the seat sensor.
The water pressure is low.	Is the Washlet main unit lined up properly with the base plate?	Detach the Washlet main unit from the base plate and reinstall. <a href="#">Page 20</a>
	Is the water pressure setting set too low?	Push the water pressure adjustment  button on the Washlet main unit operational panel. <a href="#">Page 11</a>
The cleansing water is too cold.	Is the water filter with drain valve dirty?	Clean the water filter with drain valve. <a href="#">Page 22</a>
	Is the water temperature setting button OFF or set too low?	Adjust the water temperature by pushing the high. <a href="#">Page 12</a>
	Is the timer energy saver activated?	Sit on the toilet seat and wait for about 10 minutes.


## Rear Cleansing / Front Cleansing

Problem	Check (Cause)	Response
The cleansing water stops spraying while the unit is in use.	If the  or  buttons are pushed, the water spray automatically stops after 5 minutes.	Push the  or  button again.  Page 11
	Is the seat sensor working properly?	Change the way you sit and / or hold your arms near the seat sensor.

## Heated Toilet Seat

Problem	Check (Cause)	Response
The toilet seat does not get warm.	Is the toilet seat temperature setting turned OFF or set too low?	Adjust the water temperature by pushing the high.  Page 12
	Is the Timer Energy Saver activated?	It takes 15 minutes for the toilet seat to get warm after sitting on it.  Page 14
	Is the Auto Energy Saver activated?	When you sit on the toilet seat, the seat will become warm temporarily.  Page 15
Heated seat does not heat.	Is the seat sensor working properly?	Clean the seat sensor.
	After one hour of sitting, the seat will turn off as a safety precaution. After user moves off of the seat, the seat heater will reset.	—


## Energy Saver Function

Problem	Check (Cause)	Response
The Auto Energy Saver does not work even after the button is pressed.	It takes 2 to 3 days to determine the time periods when the toilet is used infrequently.	—
	This is not a malfunction. The Washlet may not go into energy-saving mode if the toilet is used three or four times during the same time period.	—
Energy Saver will not activate at the time that is set to do so.	Is the electrical plug inserted into the wall outlet properly?	Set the Time Energy Saver to "ON". (If the power is turned off, the "TIMER" light will blink.)
	Is there a power outage? (If so, the time settings may be incorrect.)	Auto energy saver will take place normally on and after the following day.  Page 15

## Soft Close

Problem	Check (Cause)	Response
After a cover is placed on the seat and lid, the seat and lid close too quickly.	Due to the added weight of the cover, the seat and lid close more quickly. This is not a malfunction.	—
The speed of the seat and lid closure varies in summer and winter.	Due to changes in room temperature or the frequency of Washlet, the speed of the lid closure may vary. This is not a malfunction.	—

## Seat Sensor

Problem	Check (Cause)	Response
When you press the "Front" or "Rear" button, the cleansing feature operates even though the toilet seat is not occupied.	The seat sensor is covered.	Do not cover the seat sensor.  Page 9
	The seat sensor is dirty or wet.	Clean the seat sensor.
The cleansing feature does not work even though the toilet seat is occupied.	The seat sensor may not detect you depending on the way you are sitting, the color of your clothing, or the material of your clothing.	Change the way you sit and/or hold your arms near the seat sensor.
	The seat sensor is covered with clothing, dust, or water.	Remove the clothing, dust, or water.

## Other

Problem	Check (Cause)	Response
Washlet main unit rattling or shaking.	Check to see if Base Plate bolts are tight.	Firmly tighten Base Plate bolts.
Water leaks from the pipe fittings.	Are the bolts loose?	Tighten the bolts with a monkey wrench.

# Specifications

Items		Contents		
Rated Power Supply		120 VAC 60Hz		
Rated Power Consumption		570W		
Standard power Consumption per hour		29Wh		
Power Cord Length		3 ft. (1.0 m)		
Washlet	Spray Amount	Rear Cleansing	About 11.8 - 30.4 oz/min (0.35 - 0.90L/min)	
		Front Cleansing	About 15.2 - 33.8 oz/min (0.45 - 1.00L/min)	
	Water Temperature		About 86 - 104°F (30 - 40°C)	
	Heater Capacity		517W (Instantaneous)	
	Tank Capacity		0.30 gallon (1.14L)	
	Safety Devices		Temperature fuse, Bimetal switch (excess heat), Float switch (empty water)	
Backflow Prevention Devices		Vacuum breaker, One-way valve		
Heated Seat	Surface Temperature		About 86 - 97°F (30 - 36°C) (With Auto Energy Saver: 79°F (26°C))	
	Heater Power		53W	
	Safety Devices		Temperature Fuse	
Supply Water Pressure		7 Psi - 110 Psi (0.05 MPa - 0.75 MPa)		
Supply Water Temperature		32 - 96°F (0 - 35°C)		
Ambient Temperature		32 - 104°F (0 - 40°C)		
Product Dimensions	Round	19.3" x 19.9" x 7.0" (W 490mm, D506mm, H178mm)		
	Elongated	19.3" x 21.1" x 7.0" (W 490mm, D535mm, H178mm)		
Product weight		10.6 lbs. (4.8kg)		

# Limited Warranty

## One Year Limited Warranty

1) TOTO USA, Inc ("TOTO") warrants its products to be free from manufacturing defects under normal use and service for a period of one (1) year from the date of purchase. This warranty is extended only to the ORIGINAL PURCHASER.

TOTO's obligations under this warranty are limited to repair or replacement, at TOTO's option, of products or parts found to be defective, provided that such products were properly installed and used in accordance with instructions. TOTO reserves the right to make such inspections as may be necessary in order to determine the cause of the defect. TOTO will not charge for labor or parts in connection with warranty repairs or replacements. TOTO is not responsible for the cost of removal, return and/or reinstallation of products.

2) This warranty does not apply to the following items:

- Damage or loss sustained in a natural calamity such as fire, earthquake, flood, thunder and/ or electrical storm, etc.
- Damage or loss resulting from any unreasonable use, misuse, abuse, negligence, or improper maintenance of the product.
- Damage or loss resulting from removal, improper repair, or modification of the product.
- Damage or loss resulting from sediments or foreign matter contained in a water system.
- Damage or loss resulting from improper installation or from installation of a Washlet in a harsh and/or hazardous environment.

This includes locations where the water pressure exceeds the maximum allowed by local codes. Note: model codes allow a maximum of 80 PSI. Check local code for requirement.

3) This warranty applies only to the Washlet, and not to any other items such as the toilet bowl, etc.

4) To obtain warranty repair service under this warranty, you must take the defective product or deliver it prepaid (shipping and handling) to an authorized TOTO USA, INC. service center. To find the closest authorized dealer, please call 1-888-295-8134.

5) In order for this limited warranty to be valid, TOTO USA, INC. must receive the completed attached warranty registration card and your proof of purchase within 30 days of the original purchase date.

6) If the danger label which has been placed over the seams on the back of the Washlet's main unit is broken or otherwise not intact, this limited warranty is void.

This written warranty is the only warranty made by TOTO. Repair or replacement as provided under this warranty shall be the exclusive remedy available to the purchaser. TOTO shall not be responsible for loss of the product or for other incidental, special or consequential damages or expenses incurred by the purchaser, or for labor or other costs due to installation or removal, or costs of repairs by others, or for any other expense not specifically stated above. TO THE EXTENT PERMITTED BY LAW, TOTO DISCLAIMS ALL OTHER IMPLIED WARRANTIES INCLUDING THAT OF MERCHANTABILITY AND FITNESS FOR A PARTICULAR PURPOSE. TOTO ALSO DISCLAIMS ANY LIABILITY FOR SPECIAL, INCIDENTAL, OR CONSEQUENTIAL DAMAGES. Some states do not allow limitations of how long an implied warranty lasts or the exclusion or limitation of special, incidental or consequential damages, so these limitations and exclusions may not apply to you. This warranty gives the consumer specific legal rights. You may also have other rights that vary from state to state. This warranty is to the original purchaser only, and excludes product damage due to installation error, product abuse, or product misuse, whether performed by a contractor, service company, or the consumer.

Warning! TOTO shall not be responsible or liable for any failure of, or damage to, this plumbing product or product component caused by either chloramines in the treatment of public water supply or cleaners containing chlorine (calcium hypochlorite).

Note: The use of a high concentrate of chlorine or chlorine related products can seriously damage the fittings. This damage can cause leakage and serious property damage.

THIS IS OUR EXCLUSIVE WRITTEN WARRANTY.

DISCONTINUED