

Software license manager

# DS FLEX

DRAFT



Installation manual



# **DS\_FLEX**

**Deltares Software License Manager**

**Installation Manual**

Version: 4.02  
SVN Revision: 50387

April 18, 2018

## DS\_FLEX, Installation Manual

### Published and printed by:

Deltares  
Boussinesqweg 1  
2629 HV Delft  
P.O. 177  
2600 MH Delft  
The Netherlands

telephone: +31 88 335 82 73  
fax: +31 88 335 85 82  
e-mail: [info@deltares.nl](mailto:info@deltares.nl)  
www: <https://www.deltares.nl>

### For sales contact:

telephone: +31 88 335 81 88  
fax: +31 88 335 81 11  
e-mail: [software@deltares.nl](mailto:software@deltares.nl)  
www: <https://www.deltares.nl/software>

### For support contact:

telephone: +31 88 335 81 00  
fax: +31 88 335 81 11  
e-mail: [software.support@deltares.nl](mailto:software.support@deltares.nl)  
www: <https://www.deltares.nl/software>

Copyright © 2018 Deltares

All rights reserved. No part of this document may be reproduced in any form by print, photo print, photo copy, microfilm or any other means, without written permission from the publisher: Deltares.

## Contents

<b>List of Figures</b>	<b>v</b>
<b>1 FLEXnet installation</b>	<b>1</b>
1.1 Installing FLEXnet on Windows . . . . .	1
1.1.1 Checklist before starting the installation . . . . .	1
1.1.2 Installation . . . . .	1
1.1.3 Functionality of the installation configurations . . . . .	8
1.1.4 How to add license files . . . . .	8
<b>2 Frequently asked questions for FLEXnet</b>	<b>11</b>
2.1 FAQ's on Windows . . . . .	11
2.1.1 Error on client: Server node is down or not responding, although server log file looks fine . . . . .	11
2.1.2 My server client licensing system is not running properly . . . . .	12
2.1.3 If not all license files are listed in the log file . . . . .	12
2.1.4 Which installation configuration do I need? . . . . .	15
2.1.5 Old Delft3D versions and USB dongles . . . . .	15
2.1.6 "Can not find license file" error . . . . .	15
2.1.7 Order in which license files are accessed . . . . .	16
2.1.8 Environment variables . . . . .	16
2.1.9 Registry keys . . . . .	16
2.1.10 Running a license server with license files for Delft3D version 3.23.04 or lower generates errors . . . . .	16
2.1.11 Restarting vendor daemons on a license Server . . . . .	17

DRAFT

## List of Figures

1.1	Software license <b>Welcome</b> window . . . . .	2
1.2	<b>Setup detected a previous installation</b> window . . . . .	2
1.3	<b>Choose Configuration Options</b> window . . . . .	3
1.4	<b>Choose Destination Folder</b> window . . . . .	4
1.5	<b>Install the License File</b> window . . . . .	5
1.6	<b>Specify License File Location</b> window, locate license file . . . . .	5
1.7	<b>Specify License File Location</b> window, license found . . . . .	6
1.8	<b>Start Installation</b> window . . . . .	6
1.9	<b>Progressbar</b> window . . . . .	7
1.10	Installation <b>Finish</b> window . . . . .	7
1.11	Installation <b>Add License File</b> tool . . . . .	8
1.12	<b>Specify License File Location</b> window for <i>Server only</i> and <i>Local, Client</i> configuration . . . . .	9
1.13	<b>Locate License File</b> window . . . . .	9
1.14	<b>Deltares License Manager Installation</b> window when installing the license file . . . . .	10
2.1	Imtools: <b>Config Services</b> tab . . . . .	12
2.2	Imtools: <b>Start/Stop/Reread</b> tab . . . . .	13
2.3	Imtools: <b>System Settings</b> tab . . . . .	14



DRAFT

# 1 FLEXnet installation

## 1.1 Installing FLEXnet on Windows

### 1.1.1 Checklist before starting the installation

- 1 Before starting the installation you need to make sure that you have available the license file to license your application. The license file is provided to you by Deltares and can be requested at the Deltares Software Helpdesk, probably you have already received the file.

**Remark:**

- ◇ The license files may not be stored temporarily in a root (for instance d:\).
- 2 Also you need to be aware which type of installation you want to perform. There are 3 types of installation:
    - ◇ *Local, Client*; required for Delft3D  
This installation supports the licensing on a single computer (stand-alone) and supports the licensing for a concurrent user, using a license Server in the network.
    - ◇ *Server and Client*; not relevant any more for Delft3D  
This '*Server and Client*' installation is done when using a local license server on a workstation. Using the license manager in this way has the advantage that the workstation can be approached by 'Remote Desktop', which is not possible/allowed when using a stand-alone (node locked) license.
    - ◇ *Server only*; not relevant any more for Delft3D  
With this option a service with floating licenses is installed on a server.



When you have received the license file you need to perform a '*Local, Client*' installation. The other choices are not relevant for Delft3D

**Remark:**

- ◇ When the License Manager is already installed as part of another (Deltares) software package, then you only need to add the license file(s). See [section 1.1.4 "How to add license files"](#).



### 1.1.2 Installation

During the installation of Deltares' software you have to install the licensing software. This section guides you step-by-step through this installation process.

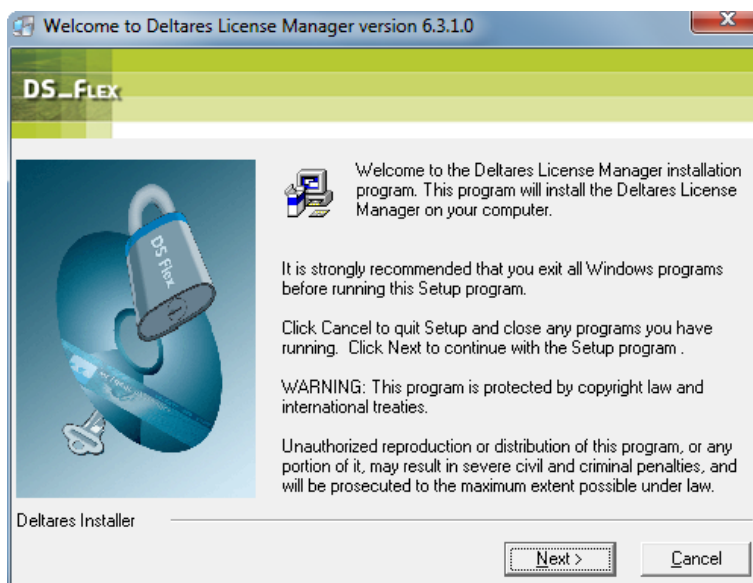
**Note:**

Do not connect the dongle to the computer before the installation of the License Manager is completed. First install the License Manager, and after that connect the dongle.



## Welcome window

The **Welcome** window depicts the general information about the License Manager.



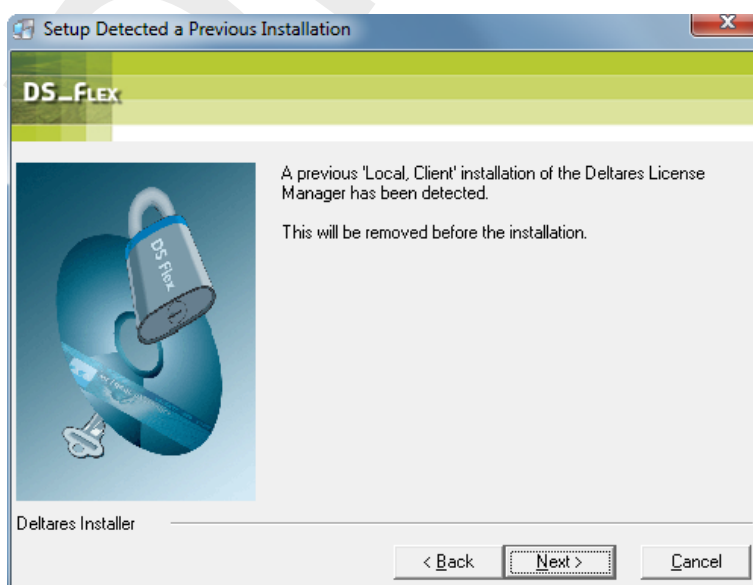
**Figure 1.1:** Software license **Welcome** window

This window will only be visible if DS\_Flex (the Deltares Software License Manager) is started stand-alone. When the Deltares Software License Manager installation is started as part of another installation, the **Welcome** window will be omitted.

- ◇ Click *Next* to continue

## Previous installation

In case there is already a version of the License Manager installed, the following screen will appear.



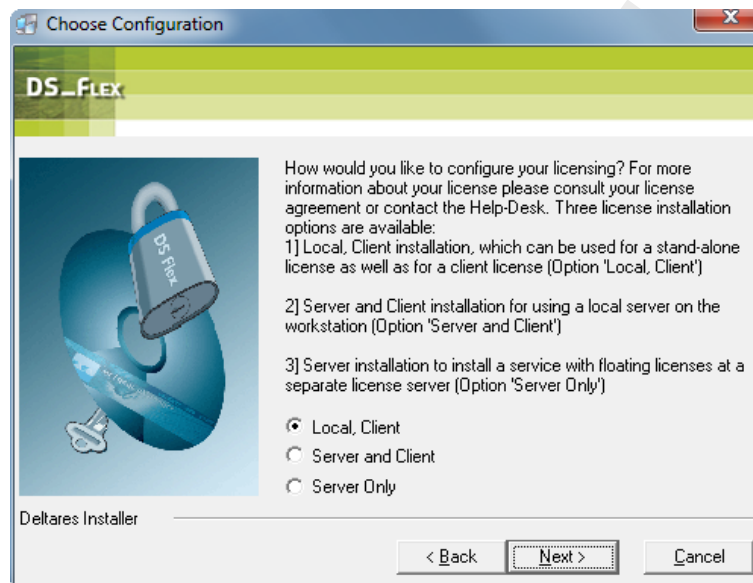
**Figure 1.2:** Setup detected a previous installation window

The type of installation mentioned depends on the type of the current installation. The current installation will be removed before installing the new version.

- ◇ Click *Next* to continue

### Choose Configuration

The **Choose Configuration** window allows the selection of the kind of configuration used for the Deltares Software License Manager. The default is 'Local, Client' or the option which was used when installing the previous version.



**Figure 1.3: Choose Configuration Options** window

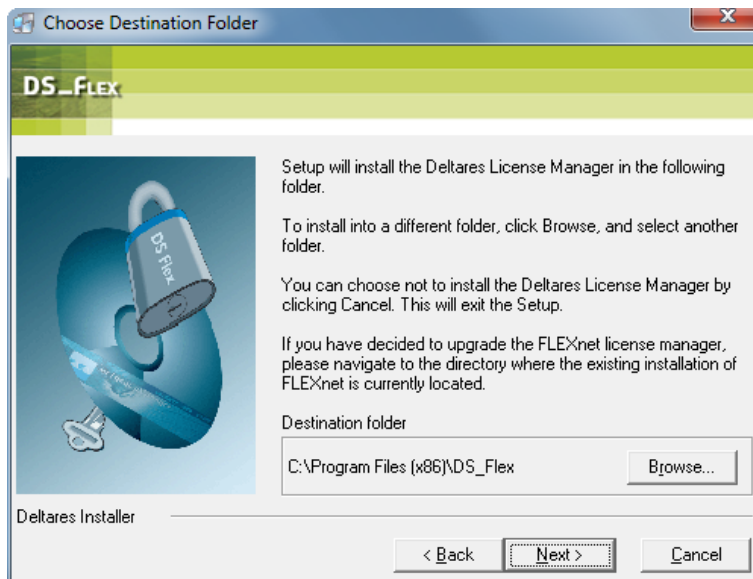
The possible options are, where only *Local, Client* is relevant for Delft3D:

- 1 *Local, Client*; required for Delft3D  
This installation is used for a local (stand-alone) as well as for a client license. **Unless the pc you are installing the license manager on is a license server, you will always need to use this option.**
- 2 *Server and Client*; not relevant any more for Delft3D  
This server and client installation is done when using a local license server on a workstation. Using the license manager in this way has the advantage that the workstation can be approached by 'Remote Desktop', which is not possible/allowed when using a stand-alone (node locked) license.
- 3 *Server Only*; not relevant any more for Delft3D  
With this option a service with floating licenses is installed at a separate license server.

- ◇ In order to continue, select the desired option and press the *Next* button.

### Choose Destination Folder

Using the **Choose Destination Folder** window, you can select where the Deltares Software License Manager will be installed. Use the Browse option to change the default folder. It is common practice to use the default folder.



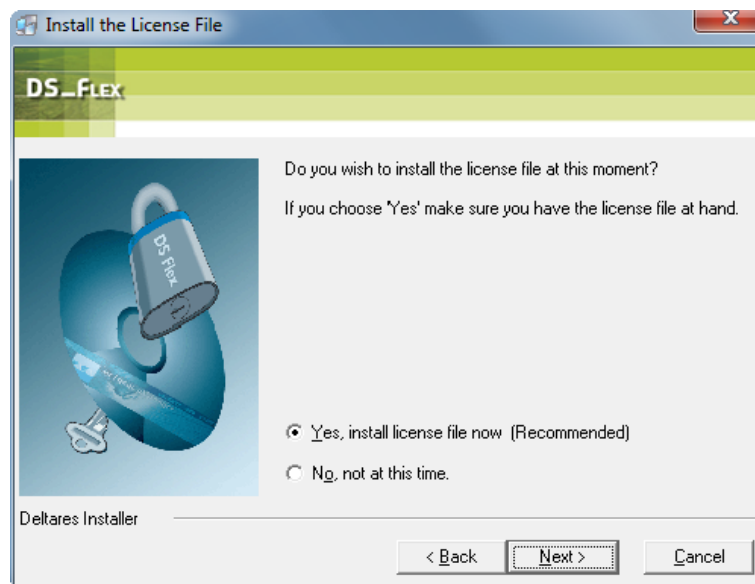
**Figure 1.4: Choose Destination Folder window**

Using this window, you can select where the Deltares Software License Manager will be installed. Use the Browse option to change the default folder. It is common practice to use the default folder.

- ◇ Click *Next* to continue

### Install the License File

The **Install the License File** window allows the selection of the desired license file. This file will be copied to the Deltares Software License Manager Installation directory when the installation is finished the extension of the license file will be changed to `<*.lic>`.



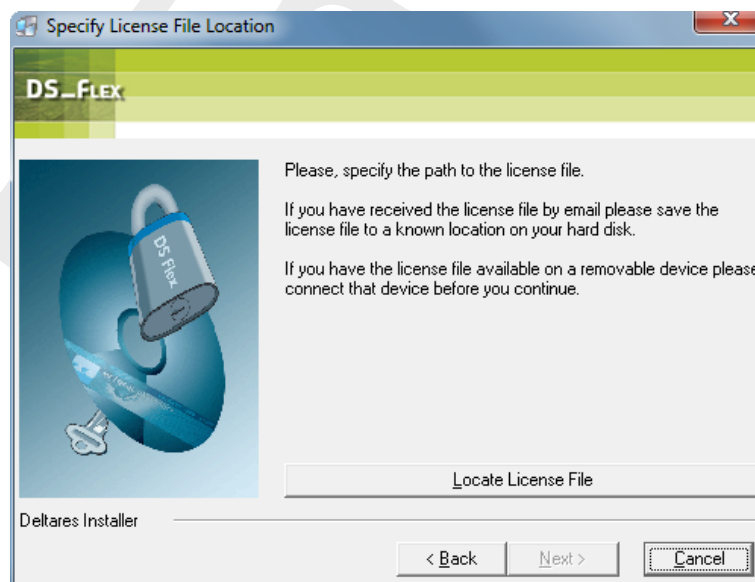
**Figure 1.5: Install the License File window**

- ◇ Click *Next* to continue

If *Yes* was selected, the **Specify License File Location** window is shown.

### Specify License File Location

The **Specify License File Location** window is used to specify the exact location of the license file. Press the *Locate License File* button and browse to the directory containing the license file and select the required file.



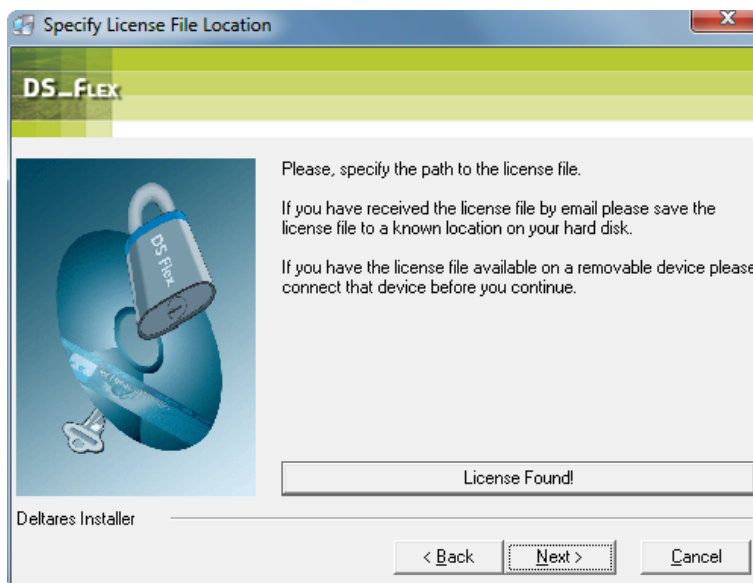
**Figure 1.6: Specify License File Location window, locate license file**

### Remark:

- ◇ If you are provide with more than one license file, see the section about how to add or update license files.



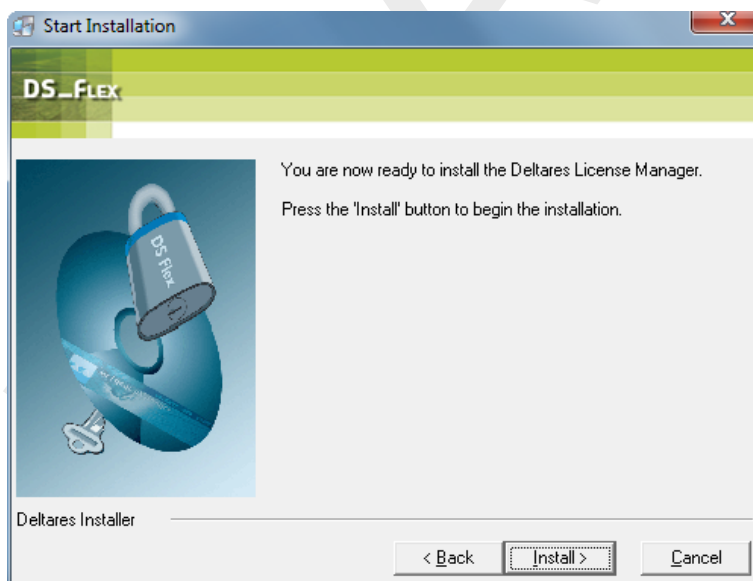
After selecting a license file you get the following window:



**Figure 1.7: Specify License File Location window, license found**

### Start installation

The configuration of the installation is now done.



**Figure 1.8: Start Installation window**

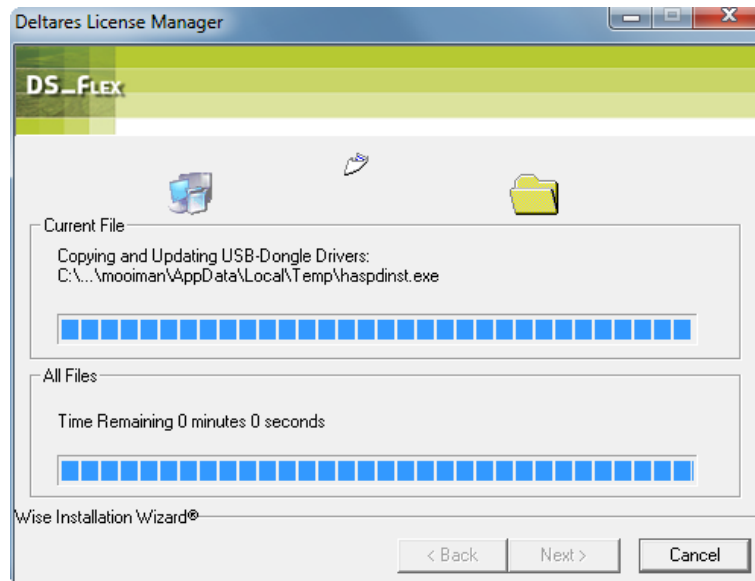
- ◇ Click *Install* to install the License Manager.

Now the installation will start. A progress bar is displayed showing the steps of the installation

### Deltares Software License Manager Installation progress

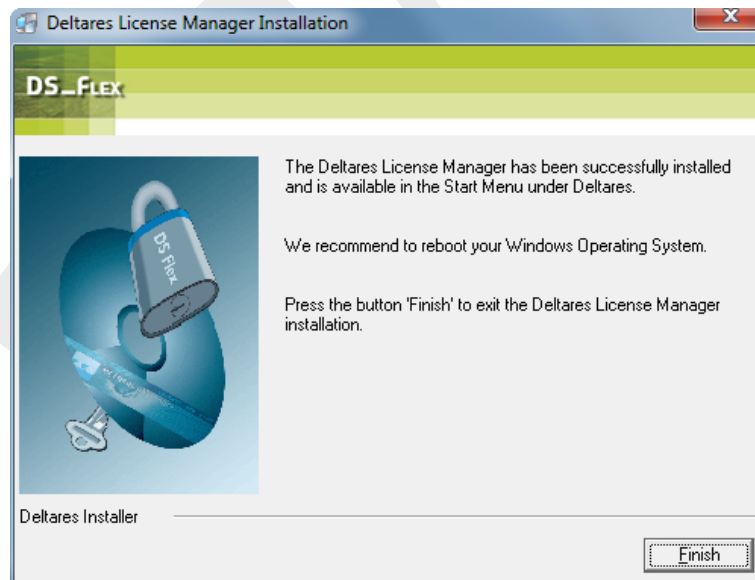
The **Deltares License Manager** window shows the progress of the installation of the Deltares Software License Manager. Just be patient, because the installer has to check some system

settings. If you press *cancel* the installation will be canceled, than the license manager will not work properly and because of that the Deltares-programs will not recognize the licenses.



**Figure 1.9: Progressbar window**

At the completion of the installation the following screen will be shown. However if the Deltares Software License Manager Installation has been started by a Deltares-program, this window does not appear.



**Figure 1.10: Installation Finish window**

This means that the Deltares software License Manager has been installed successfully.

- ◇ The installation procedure can be exited by pressing the *Finish* button.

## Mounting the dongle

Always install the License Manager before connecting the dongle. When the License Manager has been installed. The dongle can be connected to the computer.

Now you are ready to use Deltares software

### 1.1.3 Functionality of the installation configurations

#### Local, Client configuration

When adding a license file using the *Add License File* tool, the license file is copied to the <DS\_Flex> directory; no license server is started.

#### Server Only configuration

When adding a license file using the *Add License File* tool, the license file is copied to the <DS\_Flex> directory. Also a license server is started. When the operating system supports this, a service is defined that starts the license server at start-up. The license Server computer can also be used as a Client computer. This means that Delft3D can run on the license Server.

#### Combining standalone and client configuration

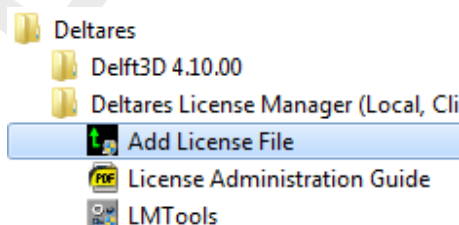
When it is required that standalone licenses can be run on a Client computer, the Client computer should have a standalone configuration. This way all license files that are added with the *Add License File* tool are copied to the local <DS\_Flex> directory. The Client computer will find the license Server because it is defined in the license file. Please note that when the files on the license Server are updated, they need to be updated on the Client computer as well.

#### Changing the license configuration

If you want to change the license configuration, you need to de-install the License Manager software and re-install it choosing the new configuration. De-installing the License Manager software can be done via the *Add or Remove Programs* menu (see Start → Control Panel).

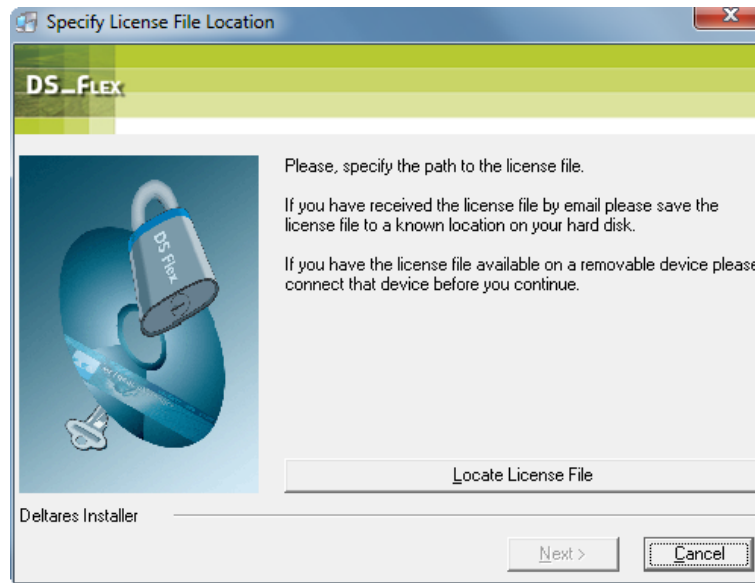
### 1.1.4 How to add license files

A license file can be added or updated using the *Add License File* tool, see [Figure 1.11](#):



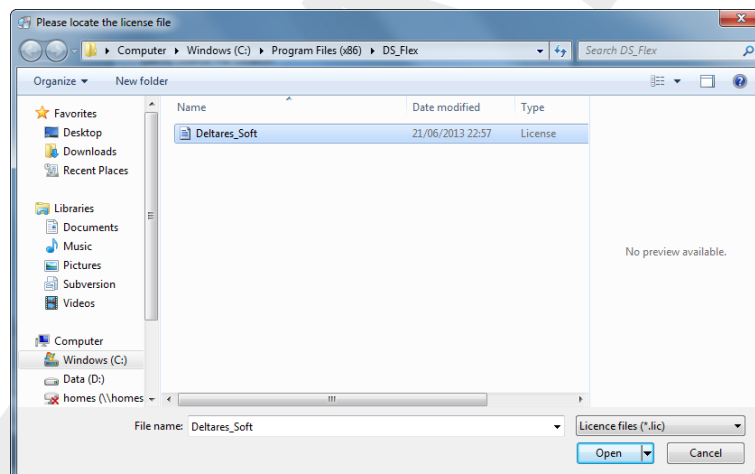
**Figure 1.11:** Installation *Add License File* tool

Next the **Specify License File Location** window appears, see [Figure 1.12](#).



**Figure 1.12: Specify License File Location** window for Server only and Local, Client configuration

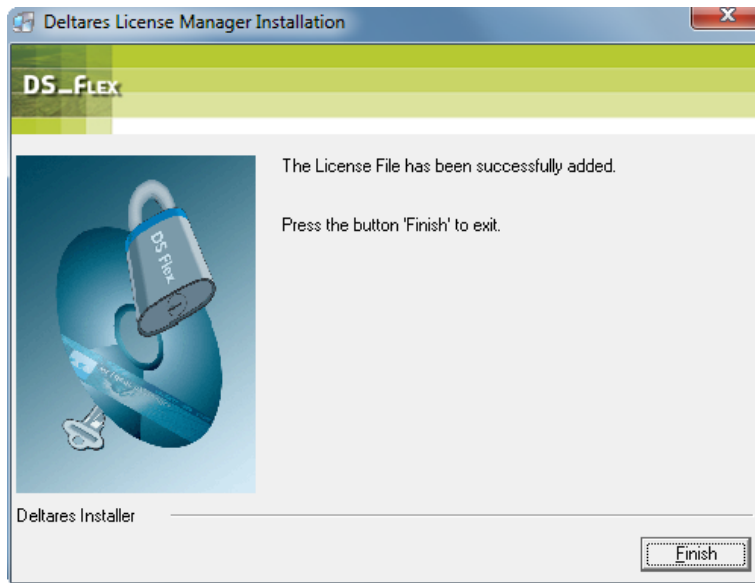
Click *Locate License File* and browse to the license file to add or update, see [Figure 1.13](#).



**Figure 1.13: Locate License File** window

Click *Open*, next the **Specify License File Location** window is displayed again.

Press *Next* to continue, after a while the **Deltares License Manager Installation** window appear, see [Figure 1.14](#).



**Figure 1.14:** *Deltares License Manager Installation* window when installing the license file

Click *Finish* to exit the License File installation.

## 2 Frequently asked questions for FLEXnet

### 2.1 FAQ's on Windows

#### 2.1.1 Error on client: Server node is down or not responding, although server log file looks fine

I have configured my license Server and the server log does not contain any errors. When I start my application on the Client PC, I get the error:

##### Server node is down or not responding

The client application needs to connect to the license daemon and vendor daemon processes that are running on the Server.

You need to check if there is a fire wall configured on the Server that blocks the connection to these processes. In the FLEXnet server log file the port numbers that are used by the license daemon lmgrd and the vendor daemons lmwldelft, dwldelft and dhsdelft are reported.

```
14:53:18 (lmgrd) -----
14:53:18 (lmgrd) Please Note:
14:53:18 (lmgrd)
14:53:18 (lmgrd) This log is intended for debug purposes only.
14:53:18 (lmgrd) In order to capture accurate license
14:53:18 (lmgrd) usage data into an organized repository,
14:53:18 (lmgrd) please enable report logging. Use Macrovision's
14:53:18 (lmgrd) software license administration solution,
14:53:18 (lmgrd) FLEXnet Manager, to readily gain visibility
14:53:18 (lmgrd) into license usage data and to create
14:53:18 (lmgrd) insightful reports on critical information like
14:53:18 (lmgrd) license availability and usage. FLEXnet Manager
14:53:18 (lmgrd) can be fully automated to run these reports on
14:53:18 (lmgrd) schedule and can be used to track license
14:53:18 (lmgrd) servers and usage across a heterogeneous
14:53:18 (lmgrd) network of servers including Windows NT, Linux
14:53:18 (lmgrd) and UNIX. Contact Macrovision at
14:53:18 (lmgrd) www.macrovision.com for more details on how to
14:53:18 (lmgrd) obtain an evaluation copy of FLEXnet Manager
14:53:18 (lmgrd) for your enterprise.
14:53:18 (lmgrd) -----
14:53:18 (lmgrd)
14:53:18 (lmgrd) Done rereading
14:53:18 (lmgrd) FLEXnet Licensing (v10.1.3) started on WL06008 (IBM PC) (2/17/2006)
14:53:18 (lmgrd) Copyright (c) 1988-2004 by Macrovision Corporation. All rights reserved.
14:53:18 (lmgrd) US Patents 5,390,297 and 5,671,412.
14:53:18 (lmgrd) World Wide Web: http://www.macrovision.com
14:53:18 (lmgrd) License file(s): C:\Program Files\DS_Flex\delft3d_00247ede5be0.lic
14:53:18 (lmgrd) lmgrd tcp-port 8500
14:53:18 (lmgrd) Starting vendor daemons ...
14:53:18 (lmgrd) Started dhsdelft (pid 1660)
14:53:18 (lmgrd) Started dwldelft (pid 4012)
14:53:18 (dwldelft) Server started on WL06008 for: Delft3D
14:53:18 (dwldelft) D3D_FLOW
14:53:18 (dhsdelft) Server started on WL06008 for: DHS_Delft3D
14:53:18 (dhsdelft) DHS_Delft3D_FLOW
14:53:18 (lmgrd) dwldelft using TCP-port 1245
14:53:19 (lmgrd) dhsdelft using TCP-port 1249
```

In this example you need to make sure that the port numbers used by the license Server, dhsdelft (1249) and the vendor daemon dwldelft and lmgrd (in the session that is shown in the

log file: 1245 and 8500) are available and can be reached by the Client computer.

To specify the port numbers that are used by the license Server and the vendor daemon, you can modify the license file:

```
SERVER WL06008 FLEXID=8-5E700060C1CF TCP:8500
VENDOR dhsdelft "C:\Program Files\DS_Flex\dhsdelft.exe" PORT=8550
VENDOR dwldelft "C:\Program Files\DS_Flex\dwldelft.exe" PORT=8570
```

(See also the FLEXnet end-user guide pg. 106, 107)

You need to check in the firewall configuration if these ports can be reached. If you are running Windows XP Server SP2, be aware that a fire wall is installed automatically.

## 2.1.2 My server client licensing system is not running properly

### Check if the Server is running properly

Firstly you need to check if the license Server supports all the licensing features that you expect it to support.

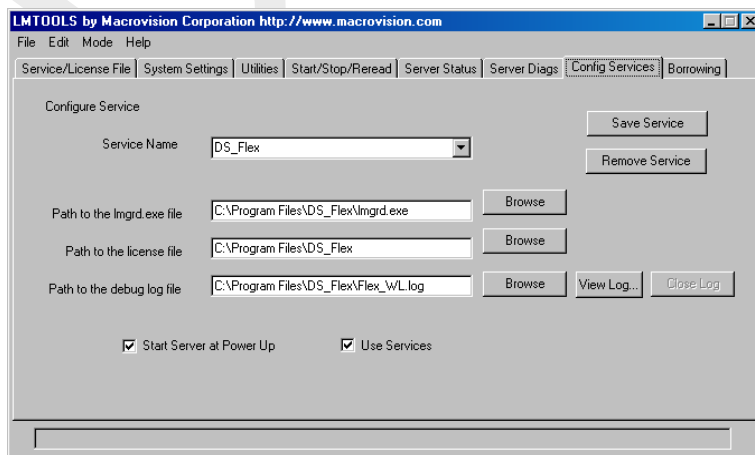
You can do this by inspecting the <Flex\_WL.log> file in the <DS\_Flex> directory on the Server.

In this file you will find the license files that are read by the license Server process (<Imgrd.exe>) and a list of features that are supported.

## 2.1.3 If not all license files are listed in the log file

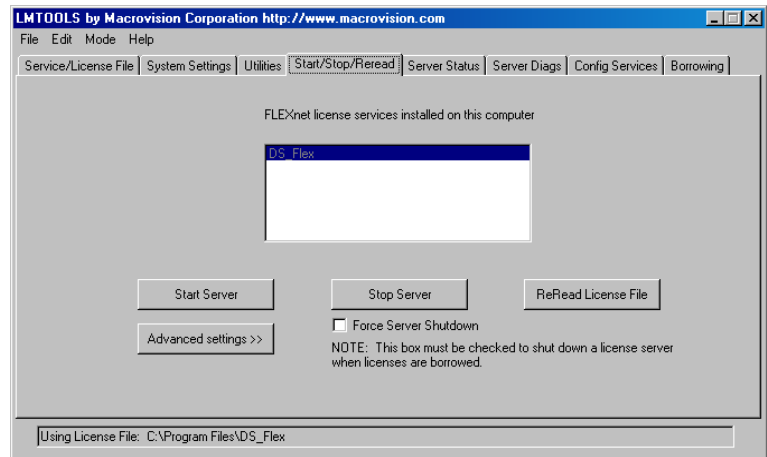
### Check if the 'service configuration' of the license Server is correct

- ◇ Start *Imtools* by activating *Start* → *All Programs* → *Deltares* → *License Manager* → *Imtools*.
- ◇ Go to the **Config Services** tab.
- ◇ Check if the *Path to the license file* contains only the <DS\_Flex> directory and no specific license file, see [Figure 2.1](#).



**Figure 2.1:** *Imtools: Config Services* tab

If you have edited the path to the license file, you should save the service and stop and start the license Server. Stopping and starting the license Server can be done with the **Start/Stop/Reread** tab, see [Figure 2.2](#).



**Figure 2.2:** *Imtools: Start/Stop/Reread tab*

Now you can check the log file again and see if all license files and features are logged in the log file.

### All license files?

Have all the license files in the <DS\_Flex> directory been added with the Add License File tool that can be found under *Start* → *All Programs* → *Deltares* → *Deltares License Manager* → *Add License File*?

This can be diagnosed by inspecting the first two lines in the license files. When they look like:

```
SERVER SERVER_NAME FLEXID=9-23EE9563 TCP:8500
VENDOR dhsdelft DHSDELFT_DAEMON
```

it has not been processed by the *Add License File* tool; when the first two lines look like:

```
SERVER WL06008 FLEXID=9-23EE9562 TCP:8500
VENDOR dhsdelft "C:\Program Files (x86)\DS_Flex\dhsdelft.exe"
```

then the license file has been processed by the *Add License File* tool. It has replaced the string "SERVER\_NAME" with the actual server name, in this example "WL06008" and it has replaced the string "DHSDELFT\_DAEMON" with the actual path to the vendor daemon, in this example <C:\Program Files (x86)\DS\_Flex\dhsdelft.exe>.

If files are found that have not been processed with the *Add License File* tool, remove them from the <DS\_Flex> directory and add them with the *Add License File* tool.

Now stop and start the license Server, see [Figure 2.2](#), and inspect the log file of the license Server. All the files should be logged in the log file.

### If not all features that you expect can be found in the log file

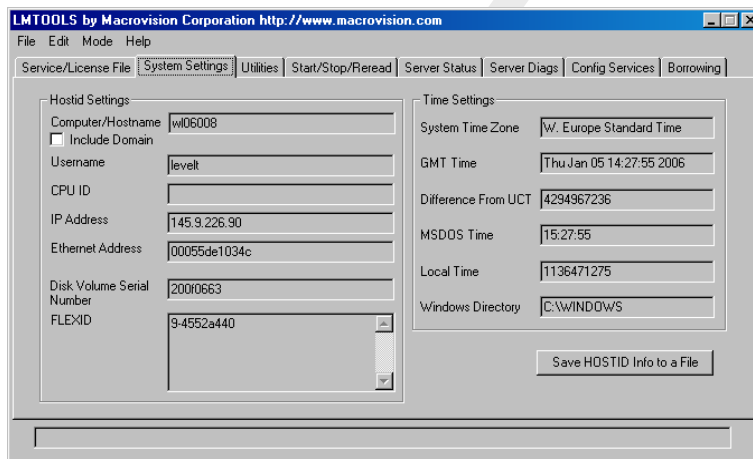
Make sure that all the license files that you have received from Deltares have been added with the *Add License File* tool. Restart the Server if necessary.

### If the log file reports a hostid error

```
14:38:28 (dhsdelft) Wrong hostid on SERVER line for license file:
14:38:28 (dhsdelft) C:\Program Files\DS_Flex\delft3d.9-23EE9562.lic
14:38:28 (dhsdelft) SERVER line says FLEXID=9-23EE9562, hostid is (Can't get hostid of type 15
    [Cannot read dongle: check dongle or driver. (-110,511)])
14:38:28 (dhsdelft) Invalid hostid on SERVER line
```

You can also use *Imtools* to check if the USB dongle is recognised by the computer.

You can start *Imtools* and activate the **System Settings** tab, see [Figure 2.3](#). In the FLEXID box, the dongle number of the USB dongle should be visible:



**Figure 2.3:** *Imtools*: System Settings tab

#### Step I

Check if the dongle is inserted in the USB port of the computer.

If the dongle is not inserted in the USB port, insert the dongle and check if *Imtools* reports the dongle now.

#### Step II

Perform an installation with the latest DS\_Flex installer. This installer can be found at the Deltares Support Site:

<Deltares\_Software/FLEXnet/DS\_Flex.exe>

During the installation the dongle should be removed from the computer.

## Check the client

When the Server is running correctly, it is still possible that the application on the client is not running correctly.

Use the *Add License File* tool to select a license file on the Server.

The *Add License File* tool on the Client PC only stores the path to the license file on the Server in an environment variable. This environment variable is used by the application to find the license files in the <DS\_Flex> directory on the Server. So only 1 license file (on the Server) needs to be selected from the Client PC and no files are copied to a local directory on the Client PC.

### 2.1.4 Which installation configuration do I need?

When you have received an *Evaluation License* or *Single Computer Personal License* you need to perform a *Local, Client* installation.

When you have received a *Network Server License*, you need to perform a *Server only* or *Server and Client* installation on your network license Server computer, and a client installation on all the computers of the concurrent users of Deltares software. The server installation needs to be performed first.

### 2.1.5 Old Delft3D versions and USB dongles

Not all Delft3D versions can work with a USB dongle. Up until version 3.23.04 of Delft3D the licensing software cannot work with a USB dongle. You either have to upgrade to a higher version of Delft3D or when this is not possible, you need to contact the helpdesk.

### 2.1.6 “Can not find license file” error

This error can be caused by the incorrect definition of the environment variables that are used by FLEXnet to search for license files.

The FLEXnet error message contains the license files that are used by the application when it encounters the error. When only a directory is shown and no license files are shown, the definition of the environment variable that points to the directory where FLEXnet searches for license files can be erroneous.

For windows XP the path should have no backslash at the end:

```
;C:\Program Files\DS_Flex;
```

The ‘;’ at the start and end of the string is optional.

For windows 2000 the general rule is that the path should have a backslash at the end:

```
;C:\Program Files\DS_Flex\;
```

The ‘;’ at the start and end of the string is optional.

This is taken care of by the DS\_Flex installer that is part of the Delft3D installation.

It has been reported that on some Windows 2000 machines, the backslash should be removed.

### 2.1.7 Order in which license files are accessed

License file locations that are used by FLEXnet to locate license files can be specified in the environment, the registry and within the application itself. What is the order in which these locations are used?

The order in which these sources are used is:

- ◇ The environment
- ◇ The registry

### 2.1.8 Environment variables

The environment variables that are used are:

DHSDLEFT\_LICENSE\_FILE

This environment variable is used by all Deltares/Delft Hydraulics applications that have vendor daemon 'dhsdleft'.

### 2.1.9 Registry keys

The registry keys that are used have the same names as the environment variables and the same versions of Delft3D are applicable (see Section 4.8.1).

They can be found in:

HKEY\_CURRENT\_USER\Software\FLEXnet

### 2.1.10 Running a license server with license files for Delft3D version 3.23.04 or lower generates errors

When you use the latest distribution of license files on a license Server it is possible that the oldest vendor daemon , lmwldelft, will generate errors.

```
14:45:28 (lmgrd) -----
14:45:28 (lmgrd) Please Note:
14:45:28 (lmgrd)
14:45:28 (lmgrd) This log is intended for debug purposes only.
14:45:28 (lmgrd) In order to capture accurate license
14:45:28 (lmgrd) usage data into an organized repository,
14:45:28 (lmgrd) please enable report logging. Use Macrovision's
14:45:28 (lmgrd) software license administration solution,
14:45:28 (lmgrd) FLEXnet Manager, to readily gain visibility
14:45:28 (lmgrd) into license usage data and to create
14:45:28 (lmgrd) insightful reports on critical information like
14:45:28 (lmgrd) license availability and usage. FLEXnet Manager
14:45:28 (lmgrd) can be fully automated to run these reports on
14:45:28 (lmgrd) schedule and can be used to track license
14:45:28 (lmgrd) servers and usage across a heterogeneous
14:45:28 (lmgrd) network of servers including Windows NT, Linux
14:45:28 (lmgrd) and UNIX. Contact Macrovision at
14:45:28 (lmgrd) www.macrovision.com for more details on how to
14:45:28 (lmgrd) obtain an evaluation copy of FLEXnet Manager
14:45:28 (lmgrd) for your enterprise.
14:45:28 (lmgrd)
14:45:28 (lmgrd) -----
14:45:28 (lmgrd)
14:45:28 (lmgrd)
14:45:28 (lmgrd) Done rereading
```

```

14:45:28 (lmgrd) FLEXnet Licensing (v10.1.3) started on WL06008 (IBM PC) (2/21/2006)
14:45:28 (lmgrd) Copyright (c) 1988-2004 by Macrovision Corporation. All rights reserved.
14:45:28 (lmgrd) US Patents 5,390,297 and 5,671,412.
14:45:28 (lmgrd) World Wide Web: http://www.macrovision.com
14:45:28 (lmgrd) License file(s): C:\Program Files\DS_Flex\delft3d_00247ede5be0.lic
14:45:28 (lmgrd) lmgrd tcp-port 8500
14:45:28 (lmgrd) Starting vendor daemons ...
14:45:28 (lmgrd) Started dhsdelft (pid 3832)
14:45:28 (lmgrd) Started dwldelft (pid 2708)
14:45:28 (lmgrd) Started lmwldelft (pid 1592)
\textbf{14:45:29 (lmwldelft) Cannot open license file C:\flexlm\license.dat}

```

As long as you run Delft3D version 3.24.00 or higher this will cause no problems running Delft3D. We advise you to migrate to a higher version of Delft3D. When this is not possible, you need to contact the helpdesk.

### 2.1.11 Restarting vendor daemons on a license Server

When you run a license Server with multiple license daemons, as is the case with many Delft3D set-ups, it is possible that you get restarting license daemons. This results in no licenses being served by the license Server. This problem can also occur when you run license files from several suppliers on one license Server.

#### Log file

```

15:04:36 (lmgrd) -----
15:04:36 (lmgrd) Please Note:
15:04:36 (lmgrd)
15:04:36 (lmgrd) This log is intended for debug purposes only.
15:04:36 (lmgrd) In order to capture accurate license
15:04:36 (lmgrd) usage data into an organized repository,
15:04:36 (lmgrd) please enable report logging. Use Macrovision's
15:04:36 (lmgrd) software license administration solution,
15:04:36 (lmgrd) FLEXnet Manager, to readily gain visibility
15:04:36 (lmgrd) into license usage data and to create
15:04:36 (lmgrd) insightful reports on critical information like
15:04:36 (lmgrd) license availability and usage. FLEXnet Manager
15:04:36 (lmgrd) can be fully automated to run these reports on
15:04:36 (lmgrd) schedule and can be used to track license
15:04:36 (lmgrd) servers and usage across a heterogeneous
15:04:36 (lmgrd) network of servers including Windows NT, Linux
15:04:36 (lmgrd) and UNIX. Contact Macrovision at
15:04:36 (lmgrd) www.macrovision.com for more details on how to
15:04:36 (lmgrd) obtain an evaluation copy of FLEXnet Manager
15:04:36 (lmgrd) for your enterprise.
15:04:36 (lmgrd) -----
15:04:36 (lmgrd)
15:04:36 (lmgrd) Done rereading
15:04:36 (lmgrd) FLEXnet Licensing (v10.1.3) started on WL06008 (IBM PC) (3/2/2006)
15:04:36 (lmgrd) Copyright (c) 1988-2004 by Macrovision Corporation. All rights reserved.
15:04:36 (lmgrd) US Patents 5,390,297 and 5,671,412.
15:04:36 (lmgrd) World Wide Web: http://www.macrovision.com
15:04:36 (lmgrd) License file(s): C:\Program Files\DS_Flex\delft3d.00055de1034c.lic
15:04:36 (lmgrd) lmgrd tcp-port 8500
15:04:36 (lmgrd) Starting vendor daemons ...
15:04:36 (lmgrd) Started dhsdelft (pid 1960)
15:04:36 (lmgrd) Started dwldelft (pid 3976)
15:04:37 (dhsdelft) Server started on wl06008 for: DHS_Delft3D
15:04:37 (dwldelft) Server started on wl06008 for: Delft3D
15:04:37 (dwldelft) \DRGFGRID\ D3D_GIS_\DRGFGRID

```

```
15:04:37 (lmgrd) dhsdelft using TCP-port 4523
15:04:37 (lmgrd) dwldelft using TCP-port 4524
15:04:37 (lmgrd) dhsdelft using TCP-port 4523
15:04:37 (dhsdelft) No master, exiting
15:04:37 (lmgrd) REStarted dhsdelft (pid 1968)
15:04:37 (dwldelft) No master, exiting
15:04:37 (dhsdelft) Server started on w106008 for: DHS_Delft3D
15:04:37 (lmgrd) REStarted dwldelft (pid 3660)
15:04:37 (lmgrd) dhsdelft using TCP-port 4530
15:04:37 (lmgrd) dhsdelft using TCP-port 4530
15:04:37 (dhsdelft) No master, exiting
15:04:37 (dwldelft) Server started on w106008 for: Delft3D
15:04:37 (dwldelft) \DRGFGRID\ D3D_GIS_\DRGFGRID
15:04:37 (lmgrd) REStarted dhsdelft (pid 2720)
15:04:37 (lmgrd) dwldelft using TCP-port 4533
15:04:37 (dwldelft) No master, exiting
15:04:37 (dhsdelft) Server started on w106008 for: DHS_Delft3D
15:04:37 (lmgrd) REStarted dwldelft (pid 3816)
15:04:37 (lmgrd) dhsdelft using TCP-port 4537
15:04:37 (lmgrd) dhsdelft using TCP-port 4537
15:04:37 (dwldelft) Server started on w106008 for: Delft3D
15:04:37 (dwldelft) \DRGFGRID\ D3D_GIS_\DRGFGRID
15:04:37 (dhsdelft) No master, exiting
```

This error is caused by mixing up upper and lower case server names in the license files that are used.

#### License file delft3d. 68D5E486.lic

```
# FLEXLM version 7.0 used
# Created by LicFilGen (License File Generator), 2.57 February 2007
#
# Begin Delft3D license
#
# Delft3D : 3.26.00
# Cfg-file: 3.14.00
# Date : 25 Apr 2007
#
FEATURE DHS_Delft3D dhsdelft 3.39 01-feb-2009 209 \
  VENDOR_STRING="USERNAME = 'Support'; FIRMNAME = 'Deltares' ; \
  " HOSTID=FLEXID=9-68D5E486 SIGN="0DFD DE7D \
  2E29 F719 1BA6 B59A E37D 8D8D E5CE EF68 F602 13EC 365B 7571 \
  10A8 0EE7 DE61 1C13 0E12 B1C9 9C14 7564 A1DD 1BDB 91A7 6773 \
  B085 16BC F986 1F2A"
#
# Grid and bathymetry modules
#
```

#### **Case 1: Only License files from Deltares are used on this server**

When the *Add License File* tool is consequently used when adding the license files to the Server computer, this problem will not occur.

To solve the problem, take the license files that were originally provided by Deltares and add them, using the *Add License File* tool.

#### **Case 2: License files from multiple vendors are used on this Server**

Modify the server names in all license files so that the case (upper or lower) that is used in all the license files is the same. Take care to use the server name that is defined in license files from Deltares that have been added to the Server computer using the *Add Li-*

*license File* tool or alternatively use the server name that is defined in the registry key "System/CurrentControlSet/Control/ComputerName/ComputerName". The *Add License File* tool uses the same registry key to determine the server name on during installation of the license file.

DRAFT

Deltares, 2016. "BIBTEX key with no entry, needed if no citations are made in the document."

DRAFT



DRAFT



# Deltares

PO Box 177  
2600 MH Delft  
Rotterdamseweg 185  
2629 HD Delft  
The Netherlands

T +31 (0)88 335 82 73  
F +31 (0)88 335 85 82

[software@deltares.nl](mailto:software@deltares.nl)  
[www.deltares.nl](http://www.deltares.nl)