

The Dacor logo is written in a bold, italicized, sans-serif font. The letters are black with a white outline, giving it a three-dimensional appearance. A registered trademark symbol (®) is located at the end of the word.

Family-Owned. American-Made.

The words "PARTS CATALOG" are written in large, bold, white, sans-serif capital letters. The text has a slight drop shadow and is centered over a background image of a kitchen with a stainless steel range and various kitchen items on the counter.

1998 Field Service Bulletins

98-01 Exhaust Grill Change	98-02 RV Keyboards	98-03 RSG ERC's
98-04 Raised Vent Modification	98-05 CER Glass Change	98-06 Not Used
98-07 Loose Doors	98-08 Product Design Change	98-09 ECC Knobs Not Turning
98-10 ESG366/486 Regulator Change	98-11 New Product SGM365SS	



Field Service Bulletin

dacor®

950 South Raymond Avenue
Pasadena, CA 91105

Page 1 of 1

Issued By: Technical Service	Date Issued: 7-2000	Distribution: Service/Parts	Supercedes: 98-01
Subject: Hi Limit Tripping	Product Type: Epicure Wall Ovens	Model No: ECPS/ECPD	Bulletin No: 98-01R.1

EXHAUST GRILL CHANGE

Dacor has found that some installations can restrict the airflow on the exhaust grill. A thick drawer front or cabinet drawer located directly below the oven can block a portion of the exhaust pathway – restricting the airflow and causing the oven control area temperatures to rise until the hi-limit trips.

Consumers should be advised to allow at least one inch of clearance between the bottom of the oven and any drawer fronts or cabinet drawers.

Dacor has also changed the exhaust grill to allow more air movement to eliminate nuisance tripping of the hi-limit switches. Service Assembly numbers are listed below:

ECP127 – 86701B,R,S
ECP227 – 86702B,R,S
ECP130 – 86703B,R,S
ECP230 – 86705B,R,S

Ovens with a Revision level of D or higher (VD8260000) were manufactured with the new style grill. If you have a unit with a serial number prior to (VD8260000) then you will need to replace with this service assembly.



Field Service Bulletin

dacor®

950 South Raymond Avenue
Pasadena, CA 91105

Page 1 of 1

Issued By: Technical Service	Date Issued: 7-1998	Distribution: Service/Parts	Supercedes:
Subject: INCORRECT PARTS	Product Type: RAISED VENTS	Model No: RV – RVR - RVC	Bulletin No: 98-02

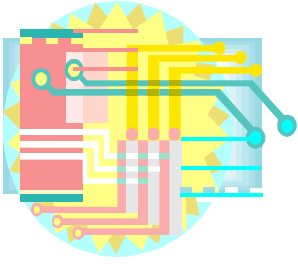
RV KEYBOARDS

Please verify the model number if the product when ordering replacement parts. The Tech-line has received numerous calls from technicians who report that the keyboard will not fit. All downdrafts do not have the same model number and parts are not interchangeable.

The keypad and keyboard are the two most common parts ordered incorrectly.

RV KEYPAD	82757	RVC/RVR KEYPAD	82711
RV KEYBOARD	82633	RV KEYPAD	86347

NOTE** You can use the keyboard for the RVC/RVR on the RV in an emergency (such as a backorder situation.) You cannot use the keyboard for the RV (82633) on the RVC/RVR (86347)



Field Service Bulletin

dacor

950 South Raymond Avenue
Pasadena, CA 91105

Page 1 of 1

Issued By: Technical Service	Date Issued: 7-1998	Distribution: Service/Parts	Supercedes:
Subject: ERC Operation	Product Type: GAS RANGE	Model No: RSG	Bulletin No: 98-03

RSG ERC'S

There has been a programming change on the all gas range. The ERC is now programmed to turn on the convection fan during the preheating using the convection fan will supply a more even temperature throughout the oven cavity. If the original ERC has failed, please order part number as the old part 82235 is no longer available.



Field Service Bulletin



950 South Raymond Avenue
Pasadena, CA 91105

Page 1 of 1

Issued By: Technical Service	Date Issued: 7-1998	Distribution: Service/Parts	Supercedes:
Subject: MODIFICATION	Product Type: VENTILATION	Model No: RV	Bulletin No: 98-04

RAISED VENT MODIFICATION

The limit switches are now mounted directly on the drive motor body, where they cannot move independently of the other motor assembly components. It will now be much harder for the switches to move out of position once they have been secured.

The part number for the new drive motor/limit switch combination is 62198. This part will fit into the older RV units, it will not fit into the RVR and RVC units. The motor switch combination replaces parts 82712, 26652, 82713. A service kit has been created to provide all of the necessary parts to accommodate this change - the kit part number is 86919.

The limit switch mounting change is indicated by a change to the Revision - on the serial tag. All units with serial tags RA through RF have the old motor/switch combination, all units with serial numbers beginning with RG have the new motor switch combination.



Field Service Bulletin



950 South Raymond Avenue
Pasadena, CA 91105

Page 1 of 1

Issued By: Technical Service	Date Issued: 7-1998	Distribution: Service/Parts	Supercedes:
Subject: MODIFICATION	Product Type: GLASS COOKTOP	Model No: CER	Bulletin No: 98-05

CER GLASS CHANGE

There are two significant changes in the re-design of the CER. First, the chassis size of the CER now matches the chassis size of the ETT. This means that the cutout sizes of the CER and the ETT are now the same, while previously the CER had a larger cutout.

Secondly, the available colors on the CER have changed. The CER was previously available in Black (B) and White (W). Now the CER is available in Black Texture (BT) and Arctic(R). The new style CER is not available in the plain black color.

The second change makes it easy to determine which style of CER the customer is using. The B and W models represent the old style, while the BT and R models represent the new style.

Part numbers for the new CER glass panels are as follows:

13320BT	Frame/Glass Panel Assembly, CER304BT
13320R	Frame/Glass Panel Assembly, CER304R
13321BT	Frame/Glass Panel Assembly, CER365BT
13321R	Frame/Glass Panel Assembly, CER365R



Field Service Bulletin

dacor®

950 South Raymond Avenue
Pasadena, CA 91105

Page 1 of 1

Issued By: Technical Service	Date Issued: 6-1998	Distribution: Service/Parts	Supercedes:
Subject: REPAIR	Product Type: WALL OVEN	Model No:	Bulletin No: 98-07

LOOSE DOORS

It has been observed that the screws near the upper corners on the sides of the door tend to strip out over time, causing the fit of the door to become loose. We have made a change on the tooling of the outer liner of the door. We have removed the 1/8" holes and embosses on the sides and replaced them with square holes suitable for mounting a pair of nut retainers. These nut retainers will provide extra reinforcement for the door screws and will prevent them from stripping out.

The change will fit on the existing ovens and ranges in the field. The technicians will need to change the outer door liner and add the nut retainers and new screws. The new part numbers are:

Outer liner 27352BP (36" Door) 27353BP (18" Door)
 27425BP (27" Door) 27460BP (30" Door)

Door Screws (2 required) 83416 (ERSD36/48) 83572 (Arctic)
 83336 (Black/Stainless)

Nut Retainer (2 required) 83418

Service kits have been created to provide everything needed to replace these door liners:

86740 (18" Door)	86744 (27" Door)
86746 (30" Door)	86753 (36" Door)



Field Service Bulletin



950 South Raymond Avenue
Pasadena, CA 91105

Page 1 of 1

Issued By: Technical Service	Date Issued: 6-1998	Distribution: Service/Parts	Supercedes:
Subject: CHANGES	Product Type: RANGE, COOKTOP	Model No: ERSD30, ESG486	Bulletin No: 98-08

DESIGN CHANGE

Dacor has changed the design on the ESG486 and the ERSD30 to remove the secondary air fan, pressure switch and solenoid valve. Because the design changes to both products were extensive, units in the field with the old configuration cannot be changed to the new style. Parts are available for both styles.

These changes have been noted on the serial tag. For the ESG486 the revision level has been changed to "B." All units with serial numbers that start with SA have the fan, pressure switch and solenoid valve. All units with serial numbers that start with SB have the new configuration. For the ERSD30, the revision level has been changed to "C." All units with serial numbers that start with "FA" or "FB" have the fan, pressure switch and solenoid valve. All units with serial numbers that start with "FC" have the new configuration.



Field Service Bulletin



950 South Raymond Avenue
Pasadena, CA 91105

Page 1 of 1

Issued By: Technical Service	Date Issued: 6-1998	Distribution: Service/Parts	Supercedes:
Subject: NEW PRODUCT	Product Type: COOKTOPS	Model No: SGM365	Bulletin No: 98-11

NEW PRODUCT

Dacor has added a new cooktop to the SGM line, the SGM365SS. This cooktop is a 36 inch, stainless steel, 5 burner cooktop. There is one burner with 14,000BTU's, 2-12,500 BTU burners and 2-8,500 BTU Burners. The warranty for this product is one year parts and labor.



Field Service Bulletin



950 South Raymond Avenue
Pasadena, CA 91105

Page 1 of 1

Issued By: Technical Service	Date Issued: 6-1998	Distribution: Service/Parts	Supercedes:
Subject: REPAIR	Product Type: COOKTOP	Model No: ECC36, 46	Bulletin No: 98-09

KNOBS NOT TURNING

If you encounter an ECC cooktop where the knobs won't push down far enough to turn on the switch, you will need to order and install an extra infinite switch nut, part # 83528. This will pull up the switch plate and give the proper clearance to allow the knob to turn properly.

You will need to order a quantity of one (1) for the ECC36 and a quantity of two (2) for the ECC46.

How to install:

ECC36 - Remove one of the center switch knobs. Install nut onto the switch and tighten.

ECC46 - Remove two of the center switch knobs. Install the nuts onto the switch and tighten.



Field Service Bulletin



950 South Raymond Avenue
Pasadena, CA 91105

Page 1 of 1

Issued By: Technical Service	Date Issued: 6-1998	Distribution: Service/Parts	Supercedes:
Subject: REGULATOR	Product Type: COOKTOPS	Model No: ESG366/486	Bulletin No: 98-10

REGULATOR CHANGE

The gas regulators on the ESG366/486 cooktops have been changed to a 3/4" regulator. The part numbers for the 3/4" regulator are 62320 for NG and 62434 for LP. All cooktops having a serial number SA8020003 or higher will include the new 3/4" regulator. The original 1/2" regulator is still available for those units requiring the original regulator.