

DISHDRAWER

PHASE 1 & 2 DRAWER OUTER PANEL GRAPHICS (NZ, AUS)

All phase 1 & 2 upper drawer front panels supplied through spare parts now come with the standard F&P graphics only. Panels with the Quantum style graphics are no longer available and if ordered will automatically supercede to the equivalent panel with F&P graphics. Please note there are no graphics on the lower drawer panel so this will not result in a mismatch.

PHASE 1 & 2 AIR PUMP PRESSURES (NZ, AUS, USA)

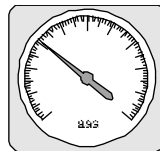
Please update the following DishDrawer service manuals with the information below:

Phase 1 service manual 599022 page 34

Phase 2 service manual 599039 page 32

Phase 1 diagnostics sheets 599034 page 14

Phase 2 diagnostics sheets 599043 page 14



The pressure reached after running the air pump for 60 seconds should be between 20 – 40Kpa. After the pump is switched off it should not drop more than 2Kpa in a 30 second period.

NEW DISPENSER COILS (NZ, AUS, USA, UK)

Due to a supply problem, we have been temporarily forced to change the 24V coils used on the phase 1, 2 & 3 DishDrawer detergent dispensers. The coils we are now using have spade terminals (6.3 quick connect) for the wiring connections where the old coils had a RAST 2.5 edge connector fitting. We are trying to source some more of the original coils for spare parts but in the interim we ask that you do one of the following when fitting a new dispenser with spade terminals:

- If the coils on the old dispenser are electrically ok swap them onto the new dispenser.
- If the coils on the old dispenser are faulty you will need to cut the RAST 2.5 plug off the wiring harness and reterminate it with 6.3 quick connect spade terminals in order to connect to the new coils.



This change of coil has also necessitated a change to the current phase 3 DishDrawer dispenser harness. Please add the new harness part number into the phase 3 DishDrawer parts manual.

526788

HARNESS DISPENSER Ph3 QC6.3

Fisher & Paykel Appliances Ltd

78 Springs Road, East Tamaki, PO Box 58-046, Greenmount,
Auckland, New Zealand, Ph: 09 273 0680, Fax: 09 273 0689

Fisher & Paykel Customer Services Pty Ltd

A.C.N. 003 3335 171, 19 Enterprise Street, Cleveland, QLD 4163
PO Box 798, Cleveland, QLD 4163, Ph: 07 3826 9100, Fax: 07 3826 9164

Fisher & Paykel Appliances Inc

27 Hubble, Irvine, California, CA92618, USA,
Ph: 949 790 8900, Fax: 949 790 8911

Fisher & Paykel Appliances Ltd UK

Broxell Close, Wedgnoek Industrial Estate, Warwick CV34 5QF,
Ph: 01926 626700, Fax: 01926 626701

DW025

June 2001

The original phase 3 dispenser harness 526263 is still available as a spare part as currently listed in the parts manual.

F1 FAULT PHASE 3 DISHDRAWER (NZ, AUS, USA, UK)

Listed below are some areas to look at closely if you are having trouble locating the cause of an F1 fault in a phase 3 DishDrawer: This list should be used in conjunction with the information already supplied in the service manual.

Product Faults:

- Is there a bad or intermittent connection where the lid motors plug onto the chassis circuit board? **Extreme care** should be taken when plugging in & unplugging the lid motors to prevent damage to the plugs and circuit board.
- Is the lid fitted the wrong way around? It has the words *front* moulded into the top of it.
- Are the stainless steel stiffening braces crimped to the front and rear of the lid dislodged or missing?
- Is one of the yokes damaged or not clipped in correctly to the front or rear of the chassis effecting the alignment when the lid seals on the tub?
- Are all the lid actuators clipped onto their relevant slide rail and yoke correctly?

Customer Faults:

- Was the spray arm in place? If the spray arm in a phase 3 DishDrawer manufactured prior to CRM729231 is not in place, there is a chance that it will over fill and flood out the rear vent hole before it faults U1. This is more likely to happen if it is connected to a hot water fill as there is more pressure generated within the tub when filling with hot water. Products manufactured after the above serial number have a software change to ensure they will fault U1 before flooding.
- Did the customer spill rinse agent when filling the dispenser? This would cause excessive foaming which would subsequently spill out the drying vents.
- Did the customer squeeze a large item into the DishDrawer that has prevented the lid from coming all the way down and sealing correctly?

TUB LATCHES CLICKING CLOSED PHASE 3 DISHDRAWER (NZ, AUS, USA, UK)

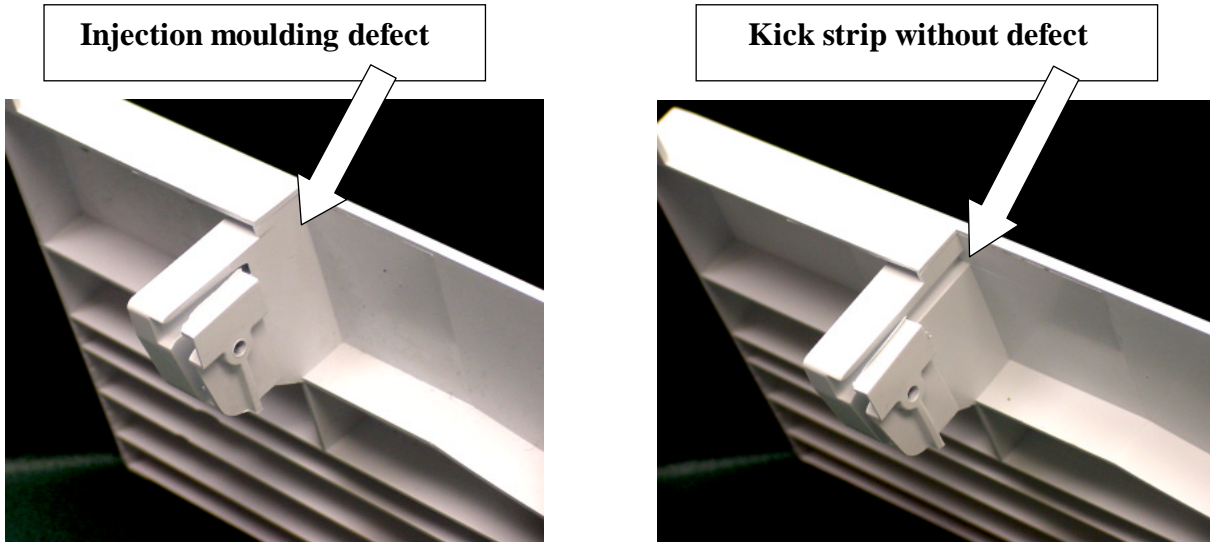
We have identified a potential fault with a small batch of tub latches that mount on the rear of the slide rails. There is the potential for a faulty latch to flick closed when the tub is pulled open. The resulting problem is that the tub won't close completely and will protrude out slightly on one side. If this fault is encountered and it is not something an installer or service person has accidentally done, then it is recommended that the offending tub latch be replaced to prevent any future problems.

DW025

June 2001

KICK STRIP DEFECT PHASE 3 DISHDRAWER (NZ, AUS, USA, UK)

We have found a batch of phase 3 kick strips with an injection-moulding defect around the mounting detail. The implications are that if a kitchen toe kick is any deeper than 50mm it may not be possible to slide the kick strip far enough back on the tub to line up with the adjacent joinery. If this problem is encountered, simply cut away the thin piece of plastic that is interfering. Refer pictures below.



DOOR ASSEMBLIES PHASE 3 DISHDRAWER (NZ, AUS, USA, UK)

All spare part door assemblies supplied for phase 3 DishDrawers now come completely assembled with the plastic door insert, 526080, and the relevant piece of door insulation, 526653, 526654, or 526655. The part numbers of the doors have not changed and the door insert and insulation are still available separately if required.

DW025

June 2001

DISHWASHER

HANDLE KITS DW820 / 920 (NZ, AUS)

We will now be supplying the follow handle kits through spare parts for all DW820 & 920 dishwashers:

521413 KIT HANDLE 820 WH SATIN

521411 KIT HANDLE 920 WH SATIN

521412 KIT HANDLE 920 BK SATIN

If ordering a handle only from the spare parts manual, it will automatically supercede to one of the above kits. These kits include the following parts: *handle, handle insert, latch handle & new mounting screws*. When fitting a new handle it is important that all of the parts in the kit be fitted including the new latch handle & screws.

ADDITIONS TO DW820 / 920 PARTS MANUAL (NZ, AUS)

The following part numbers are additions to the DW820/920 parts manual. Please add in:

521678 SOUND ABSORBER BLANKET
521529 BLANKET CHASSIS DW920 ONLY
521528 BLANKET SERVICE PANEL DW920 ONLY
521577A CABINET WRAPPER GRAY
521763 WIRING LOOM 920/820
521546 FOOT ANCHOR (attaches to floor for back feet to slide into)

WIRING LOOM PART NUMBERS FOR 818S / 918TD (NZ, AUS)

The following part numbers can be added to the 818S/918TD parts manual:

521658 WIRING LOOM 918TD
521659 WIRING LOOM 818S

PLUG CONNECTORS FOR 813E / 913T WIRING LOOMS (NZ, AUS)

The following part numbers can be added to the 812E/813E/912T/913T parts manual. They are the multi-pin plugs fitted to the end of the wiring looms that plug into the power controller in the base of the product:

555917 TERM CONN 6 WAY AMP640585-1
555918 TERM CONN 8 WAY AMP0-0926301-1

DW025

June 2001