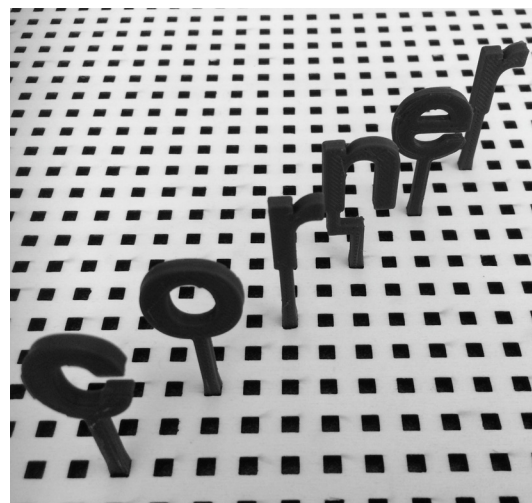
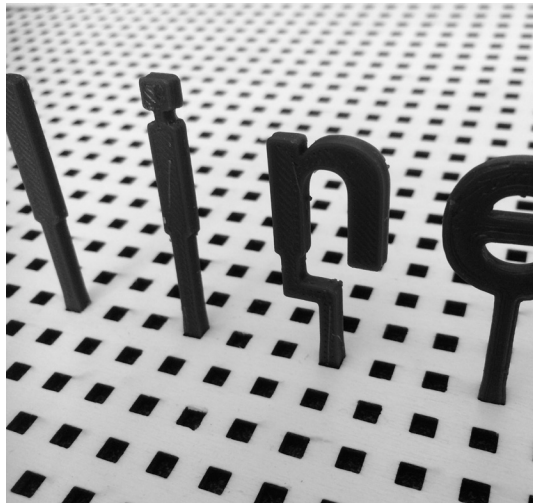
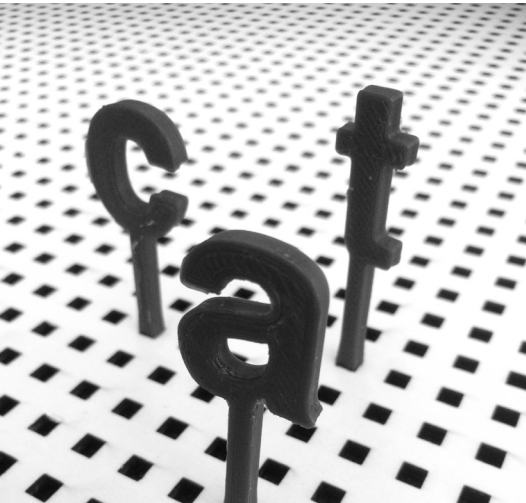
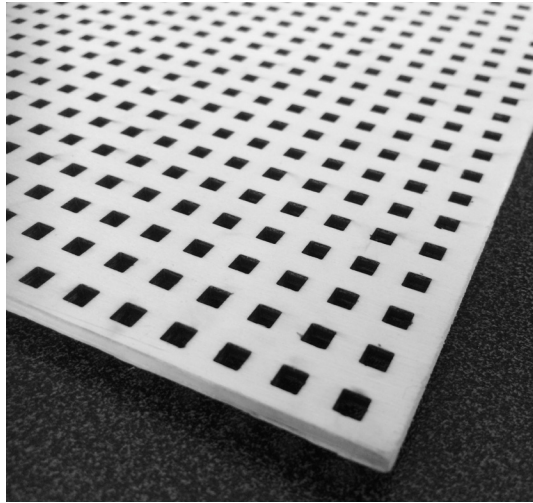
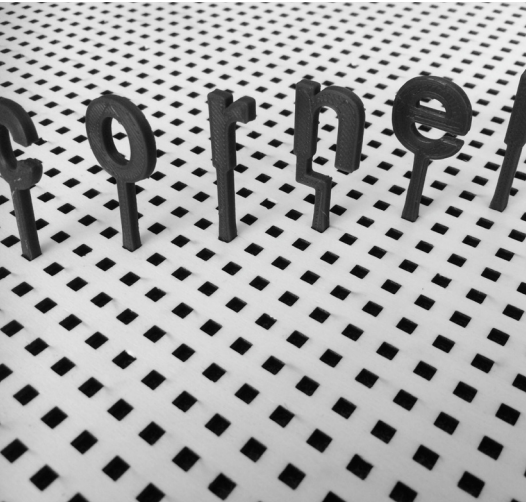
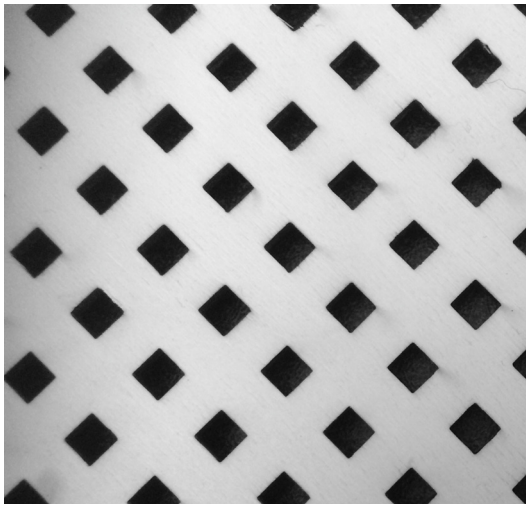


the wood plate and the let- ters

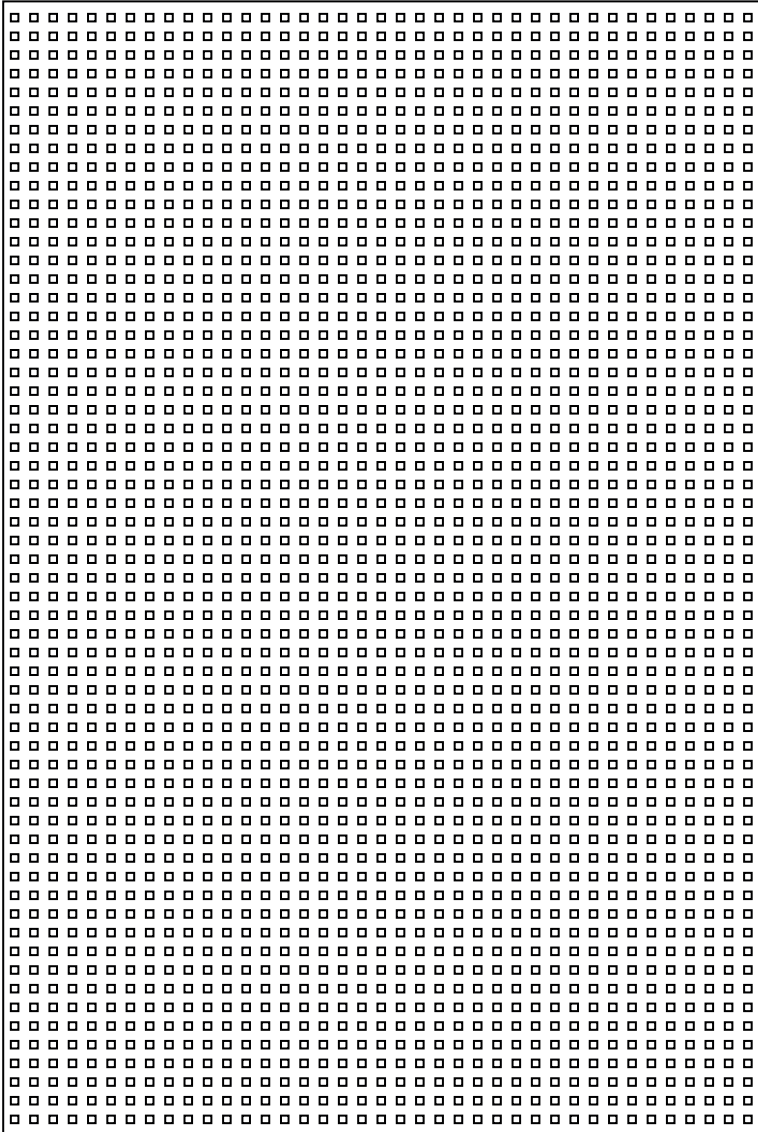
plans and manufacturing details





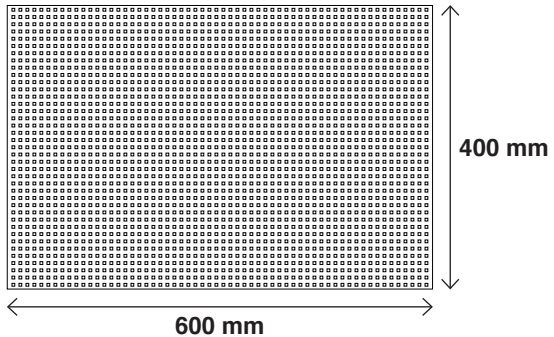
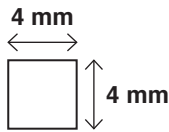
1

■ make the wood plate



to build your own plane you need :

- instructions at <https://github.com/laurasavignac/wood-plate>
- a laser cutting/engraving machine
- a plate of wood (600 x 400 mm)



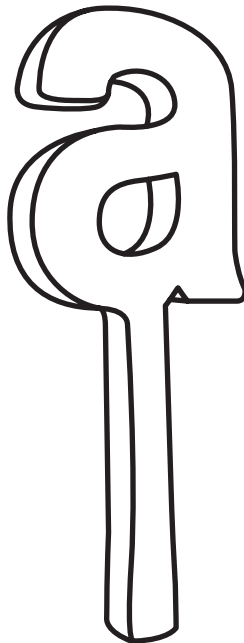
You can increase or decrease the number of holes on the plate as you want. Just be sure the bottom of the letter is the same size as the hole so it easily fit together.

1 ■ make the set of letters

to build your set of letters you need :

- instructions at <https://github.com/laurasavignac/3D-printed-letters>
- a 3D printer

The GitHub folder contains the set of lowercase, uppercase, numbers and glyphs. The type used is Helvetica Bold but you can use any other type you like.



or make your own letters

1 / On Adobe Illustrator, choose the type you want to use and vectorize the letters you need.



2 / Create the «leg» of the letter (as high as you want).



3 / Create the «foot» of the letter, the part that will slot on the wood plate. The width of it must be the same as the size of the holes on the plate.



4 / Combine the 3 parts together and use pathfinder to have a single form. Then you can easily make a 3D printable version of your letters using Bender or any 3D software.



The wood plate, the letters and its plans are under Creative Commons licence : Attribution-ShareAlike 4.0 International (CC BY-SA 4.0). You can copy and redistribute the material in any medium or format or remix, transform, and build upon the material for any purpose, even commercially. The plane plan and this guide were made by Laura Savignac.