

# Technical Bulletin

# MAYTAG®

**Date:** June 2005

**Type** Policy Letter  
√ Service Information

**No:** TDL-0084-B  
Page 1 of 1

**Attention** Service Managers  
√ Service and Parts Managers

**Models** AAV1200AGW, AAV1200AJW, AAV1200AKW, AAV2200AGW, AAV2200AJW, AAV4200AGW, AAV7000AWW, AAV8000AWW, AAV9000AWW, ALW221RJW, CAV2004AJW, CAV2004AKW, CAV2004AWW, CAV4004AGW, CAV4004AWW, CW5500W, CW6500Q, CW6500W, CW8500W, HAV1200ARW, HAV1200AWW, HAV2357AWW, HAV2360AWW, HAV2460AWW, HAV2557AWW, HAV2558AWW, HAV3460AWW, HAV4200AKW, HAV4200ATW, HAV4200AWW, HAV4657EWW, MAV2200AJW, MAV3350AGW, PAV2300AGW, PAV3300AGW, PAV3300AKW, PAVS234AWW, PAVS244AWW, PAVT234AWW, PAVT244AWW, PAVT344AWW, PAVT454EWW, AAV4000AWW, CAV1004AWW, PAVT134AWW, PAVT144AWW

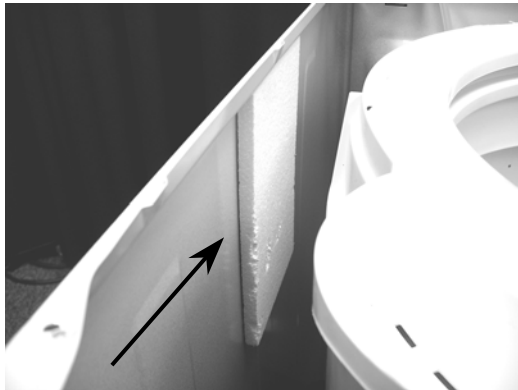
**Brand**  
Admiral  
Amana  
Crosley  
Magic Chef  
Maytag  
Performa

**Product**  
Laundry

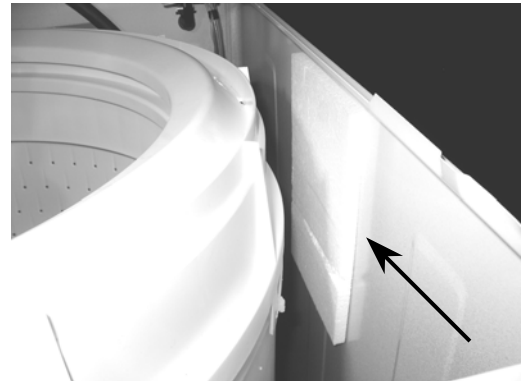
**Issue** Machine vibration

**Warranty** Standard product manufacturing warranty applies.

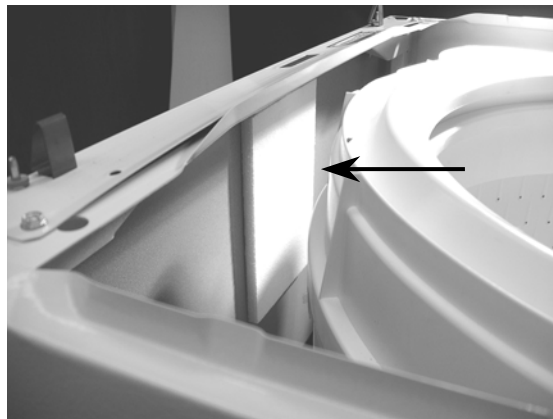
**Action** In June of 2005 on the above models, manufacturing removed three shipping pads from inside the washer cabinet.



Left side Cabinet

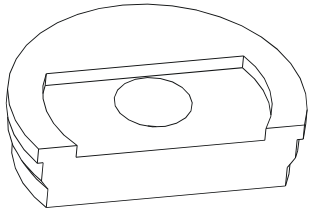


Right Side Cabinet



Front Panel  
©2005 Maytag Services

A Styrofoam shipping tub block 22004398 is being used in there place.



This change allows more travel (approximately 5/8 inch) for the washer suspension to operate inside the cabinet. This change also reduces the amount of tub hits reported in the field. During certain out of balance load conditions, the washer can experience excessive vibration when the Outer Tub hits the Styrofoam pads.

On any above washer model built between Oct 2003 and June 2005 that is displaying excessive vibration, raise the washer top and remove the three Styrofoam pads pictured above. By removing the three pads some off balance loads, will self correct and spin up to proper speed while reducing tub hits.

Perform the standard out of balance checks with leveling legs, and confirm floor sturdiness to eliminate all excessive vibration possibilities. If the customer needs a shipping tub block for moving purposes, mail a 22004398 tub block to them.