

# 4" Square LED Lensed Downlight LF4SQSL LENS

120V-277V  
High Efficacy  
0-10V Dimming

## APPLICATIONS:

LiteFrame LF4SQSL is a 4" specification grade LED lensed downlight that utilizes remote phosphor technology to obtain color consistency, energy savings, and low maintenance costs. 50,000 hours minimum life up to 35°C (95°F) in open plenum applications.

## HOUSING:

One-piece 22 gauge non-corrosive steel platform. Pre-wired j-box with snap-on cover for easy access. Snap-in connection from driver compartment allows easy installation of light engine/trim assembly without tools above or below the ceiling and can be upgraded to accommodate technology improvements. Approve for 8 (4 in/4 out) No. 12 AWG conductors rated for 90°C through wiring.

## REFLECTOR:

Self-trim standard with a regressed clear, prismatic, or diffused lens. Painted white self-trim (WT) available as option. Reflector is made from anodized AlanoD Miro 4 aluminum.

## LED LIGHT ENGINE:

The LF4SQSL uses the Philips Fortimo DLM Gen 5 LED Module with remote phosphor technology. This technology provides controlled color consistency (3 SDCM) from fixture to fixture. The system is designed for optional life and lumen maintenance (>50,000 hours at 70% lumen maintenance). Both reflector and light engine assembly are mechanically retained to housing. The light engine comes standard with 90 CRI in all Kelvin temperatures.

## LED DRIVER:

The LF4SQSL utilizes the Philips Fortimo LED Driver specifically designed to optimize efficiency of the Fortimo DLM Module. Driver is designed to match the 50,000 hour minimum life expectancy of the system. Meets UL Class 2, inherent short circuit protection, self limited, overload protected. If critical temperatures are reached on driver or LED module, integrated thermal feedback loop will gradually reduce current to protect system life. Driver is universal 120V-277V. Optional Lutron Series A driver is also available.

## DIMMING:

Comes standard with 0-10V dimming capability. Flicker-free dimming to 10%. 0-10V control may consume up to 1mA. 0-10V, Lutron 2 wire, 3 wire, and EcoSystem dimming available to 1% and DMX with RDM (remote device management) dimming to less than 0.1%.

## INSTALLATION:

Adjustable Bar hangers included(not with CP option). Universal adjustable mounting brackets also accept 1/2" EMT conduit or 1 1/2" or 3/4" lathing channel (by others) or Prescolite 24" bar hangers (B24 or B6). Housing provides up to 6° rotational adjustment of the square trim.

## CERTIFICATIONS:

CSA certified to US and Canadian safety standards. Suitable for wet locations. Approved for through wiring. Non-IC rated. EMR is damp rated and for US use only.

## WARRANTY:

5 year warranty. See [www.prescolite.com](http://www.prescolite.com) for details.

DATE: \_\_\_\_\_ TYPE: \_\_\_\_\_

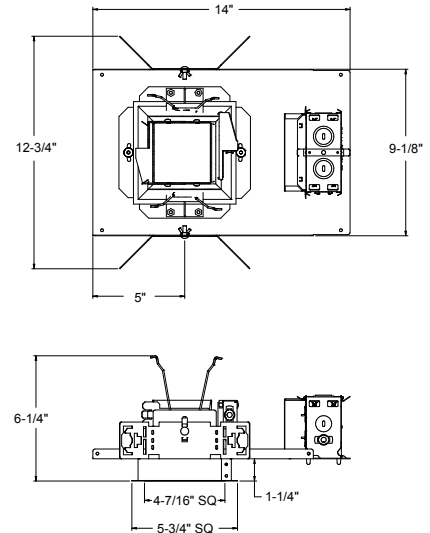
FIRM NAME: \_\_\_\_\_

PROJECT: \_\_\_\_\_

# LiteFrame®

Ceiling Cutout: 5-1/4" x 5-1/4"  
Maximum Ceiling Thickness 1 1/4"

For conversion to millimeters,  
multiply inches by 25.4  
Not to Scale



See page 3 for EMR, CP  
and NX(W)E lineart

CATALOG NUMBER:

EXAMPLE: LF4SQSLDM1 4SQSL15L40KCL

Order housing, reflector, and accessories separately

| HOUSING  | DRIVER OPTIONS   | VOLTAGE OPTION   | HOUSING OPTIONS   | TRIM APERTURE  | KELVIN  | REF. COLOR OPTIONS  | LENS  | ACCESSORIES  |
|--|--|--|---|--|---|---|---|--|
| <input type="checkbox"/> <b>LF4SQSL</b><br>Standard<br>Lumen 0-10V<br>10% dimming<br>120-277V  | Standard 0-10V<br>10% Dimming<br><input type="checkbox"/> <b>DM1</b><br>0-10V<br>dimming at 1%<br><input type="checkbox"/> <b>DMT<sup>7,8</sup></b><br>SpectraSync™<br>Tunable White<br><input type="checkbox"/> <b>DMTW<sup>9</sup></b><br>SpectraSync™<br>Dim to Warm                            | Standard<br>120V-277V<br><input type="checkbox"/> <b>347</b><br>347V                       | <input type="checkbox"/> <b>EMR<sup>3</sup></b><br>Emergency Battery<br>Pack with remote<br>test switch and<br>indicator light<br><input type="checkbox"/> <b>CP<sup>2,3,10,12</sup></b><br>Chicago Plenum<br><input type="checkbox"/> <b>LV<sup>6</sup></b><br>Lutron Vive Enabled,<br>0-10V, 120-277V<br><input type="checkbox"/> <b>NXWE<sup>2,11,12</sup></b><br>NX Wireless Enabled<br><input type="checkbox"/> <b>NXE<sup>2,11,12</sup></b><br>NX Enabled, Dual<br>SmartPorts | <input type="checkbox"/> <b>45QSL</b><br>Semi-Diffuse<br>Clear Alzak<br><br><b>OUTPUT</b><br><input type="checkbox"/> <b>11L</b><br>1100<br>Lumen<br>Module<br><input type="checkbox"/> <b>15L</b><br>1500<br>Lumen<br>Module<br><input type="checkbox"/> <b>20L<sup>10</sup></b><br>2000<br>Lumen<br>Module | <input type="checkbox"/> <b>30K</b><br>3000 Kelvin,<br>90 CRI<br><input type="checkbox"/> <b>35K</b><br>3500 Kelvin,<br>90 CRI<br><input type="checkbox"/> <b>40K</b><br>4000 Kelvin,<br>90 CRI<br><input type="checkbox"/> <b>2230TD</b><br>2200K-3000K<br>SpectraSync™<br>Dim to Warm<br><input type="checkbox"/> <b>2750T</b><br>2700K-5000K<br>SpectraSync™<br>Tunable White<br><input type="checkbox"/> <b>2765T</b><br>2700K-6500K<br>SpectraSync™<br>Tunable White | Standard<br>Clear Alzak<br><input type="checkbox"/> <b>CG</b><br>Champagne<br>Gold Alzak<br><input type="checkbox"/> <b>BL</b><br>Black Alzak<br><input type="checkbox"/> <b>WE</b><br>Wheat Alzak<br><input type="checkbox"/> <b>LW</b><br>Light Wheat Alzak<br><input type="checkbox"/> <b>PW</b><br>Pewter Alzak<br><input type="checkbox"/> <b>WH</b><br>Painted Matte<br>White Reflector<br>and Flange<br><input type="checkbox"/> <b>BC</b><br>Painted Black<br>Reflector and<br>Flange | <input type="checkbox"/> <b>CL</b><br>Regressed<br>Clear Lens<br><input type="checkbox"/> <b>DL</b><br>Regressed<br>Diffuse Lens<br><input type="checkbox"/> <b>PL</b><br>Regressed<br>Prismatic Lens | <input type="checkbox"/> <b>B24<sup>5</sup></b><br>Set of two 24" bar<br>hangers for T-bar ceilings<br><input type="checkbox"/> <b>B6<sup>5</sup></b><br>Set of two (2) bar<br>hangers for ceiling joist<br>up to 24" centers<br><input type="checkbox"/> <b>LiteGear<sup>4</sup></b><br>Inverter, single phase<br>central lighting, 125VA-<br>250VA<br><input type="checkbox"/> <b>LPS Series<sup>4</sup></b><br>LitePower micro-inverter,<br>20VA-55VA |
| <b>Use with HDM/2DM/DMX dimming option:<br/>Match Housing to Trim Output</b>   |  |  |   |  |   |   |   |  |
| <input type="checkbox"/> <b>LF4SQSL11L</b><br><input type="checkbox"/> <b>LF4SQSL15L</b><br><input type="checkbox"/> <b>LF4SQSL20L</b> | <input type="checkbox"/> <b>HDM<sup>1</sup></b><br>Hi-Lume<br>1% 3-wire/<br>EcoSystem LED<br>Driver<br><input type="checkbox"/> <b>2DM<sup>1</sup></b><br>Hi-Lume 1%<br>2-wire LED Driver<br>(120V only)<br><input type="checkbox"/> <b>DMX<sup>1</sup></b><br>DMX with RDM<br>dimming to<br><0.1% | <input type="checkbox"/> <b>120</b><br>120V<br><input type="checkbox"/> <b>277</b><br>277V | <input type="checkbox"/> <b>LVE (HDM Only)</b><br>Lutron Vive Enabled,<br>EcoSystem<br><br>*HDM, 2DM & DMX<br>also available with<br>EMR and VVV  | <b>TRIM OPTIONS</b><br><input type="checkbox"/> <b>WT</b><br>Painted<br>White<br>Flange Only   |   |   |   |  |

## Notes:

- For HDM, 2DM and DMX options, housing output must match trim output
- Not available with EMR, DMX, LV or LVE
- Not available with 347V
- See Central Inverter compatibility note and web links on page 2
- Accessories should be selected with CP housing if required.
- LV requires standard dimming or DM1
- Must select either 2750T or 2765T Kelvin with DMT driver option
- Not available with LV or LVE
- Must select 2230TD with DMTW driver option
- Not compatible with DMT or DMTW
- Not available with CP option
- Not available with HDM, 2DM or DMX



In a continuing effort to offer the best product possible we reserve the right to change, without notice, specifications or materials that in our opinion will not alter the function of the product.  
Web: [www.prescolite.com](http://www.prescolite.com) • Tech Support: (888) 777-4832

LFR-LED-015

STANDARD 0-10V DIMMING

ALTERNATIVE DIMMING TO 1% & 0.1%

# PHOTOMETRIC DATA

## LiteFrame - 4" LF4SQSL Downlight

| DRIVER DATA             | LF4SQSL20L 30K                 | LF4SQSL15L 30K                 | LF4SQSL11L 30K                 |
|-------------------------|--------------------------------|--------------------------------|--------------------------------|
| Input Voltage           | 120-277V                       | 120-277V                       | 120-277V                       |
| Input Frequency         | 50/60 Hz                       | 50/60 Hz                       | 50/60 Hz                       |
| Input Current           | 0.209A (120V)<br>0.091A (277V) | 0.158A (120V)<br>0.068A (277V) | 0.116A (120V)<br>0.050A (277V) |
| Input Power             | 25.1W                          | 19.1W                          | 13.9W                          |
| Constant Current Output | 200-1000mA                     | 200-1000mA                     | 200-1000mA                     |
| Power Factor            | ≥0.90                          | ≥0.90                          | ≥0.90                          |
| THD                     | <20%                           | <20%                           | <20%                           |
| EMI Filtering           | FCC 47CFR<br>Part 15, Class A  | FCC 47CFR<br>Part 15, Class A  | FCC 47CFR<br>Part 15, Class A  |
| Operating Temperature   | -20°C to 35°C                  | -20°C to 35°C                  | -20°C to 35°C                  |
| Dimming                 | 0-10V                          | 0-10V                          | 0-10V                          |

Over-voltage, over-current, short-circuit protected

\*Power consumption and photometric output may vary slightly with HDM or 2DM option.

When operating in EM mode, the fixture will deliver approximately 30% of the published full lumen output.

### Dimming Compatibility Table

| Dimming Ballast | Manufacturer                                  | Web Link  |
|-----------------|---|---|
| DM/DM1          | Lutron DTV                                    | <a href="http://bit.ly/11jSvZg">http://bit.ly/11jSvZg</a> |
| DM/DM1          | Leviton AWRMG-7xx,<br>AWSMG-7xx,<br>AWSMT-7xx | <a href="http://bit.ly/1BJn2R9">http://bit.ly/1BJn2R9</a> |
| HDM             | Lutron  | <a href="http://bit.ly/1vijHAL">http://bit.ly/1vijHAL</a> |
| 2DM             | Lutron  | <a href="http://bit.ly/1S4WjXK">http://bit.ly/1S4WjXK</a> |

### DMX

See instruction sheet on [www.prescolite.com](http://www.prescolite.com) for connection & installation information.

Other useful links: <http://www.eldoled.com/led-drivers/powerdrive/50-watt/ac-561s/>

### Central Inverters

For full fixture output in back-up mode, we recommend you visit [www.dual-lite.com](http://www.dual-lite.com) for your Central Lighting Inverter options. Please contact your local Hubbell representative for any assistance with proper sizing and loading of your inverter selection. Central lighting inverters must be ordered separately.

**LiteGear:** [www.dual-lite.com/products/litegear\\_lg\\_series](http://www.dual-lite.com/products/litegear_lg_series)

**LPS Series:** [www.dual-lite.com/products/lps](http://www.dual-lite.com/products/lps)

### SpectraSync™ Color Tuning Technology:

Control your space based on the needs of the application, specific activities throughout the day and preferences of the occupants with two distinct SpectraSync™ Color Tuning Technology.

**Dim to Warm:** Dim to Warm mimics the familiar warming effect that occurs with traditional incandescent sources as they are dimmed. (Available with 2200K-3000K).

**Tunable White:** Tunable White offers users the ability to tailor CCT to their personal preference, enhancing task visibility, material and colors or the aesthetics of the space. (Available with 2700K-5000K or 2700K-6500K).

See separate [SpectraSync™ Tech Sheet](#) for additional details.

### NX Distributed Intelligence:

Supports indoor and outdoor applications, wired, wireless and hybrid networked NX lighting control deployments and enables emerging applications such as Hubbell Lighting's SpectraSync™ color tuning technology.

See separate [NX™ Solutions Guide](#) for additional details.

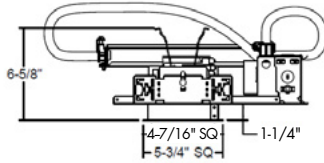
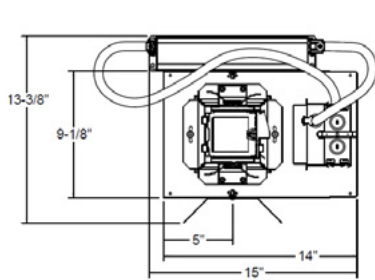
See Hubbell Controls Solution [NX Brochure](#).



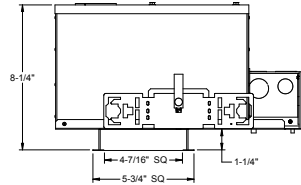
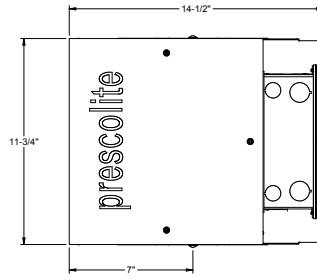
Web: [www.prescolite.com](http://www.prescolite.com) • Tech Support: (888) 777-4832  
701 Millennium Boulevard • Greenville, SC 29607 U.S.A. • Phone (864) 678-1000  
Copyright ©2017 Prescolite, Inc., a division of Hubbell Lighting, Inc. All Rights Reserved  
Specifications subject to change without notice. • Printed in U.S.A. • LFR-LED-015 • 10/11/17



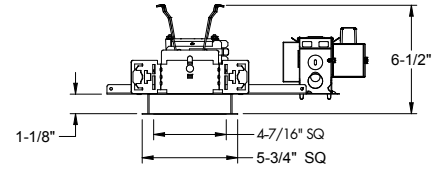
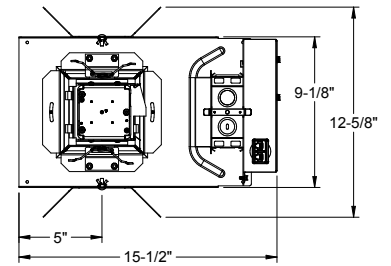
# LiteFrame - 4" LF4SQSL Downlight



**LF4SQSL EMR**



**LF4SQSL CP**



**LF4SQSL LENS NX(W)E**



Web: [www.prescolite.com](http://www.prescolite.com) • Tech Support: (888) 777-4832  
 701 Millennium Boulevard • Greenville, SC 29607 U.S.A. • Phone (864) 678-1000  
 Copyright ©2017 Prescolite, Inc., a division of Hubbell Lighting, Inc. All Rights Reserved  
 Specifications subject to change without notice. • Printed in U.S.A. • LFR-LED-015 • 10/11/17

