

# 6" LED Wall Wash Downlight

## LF6SL WW

120V-277V  
0-10V Dimming

### APPLICATIONS:

LiteFrame LF6SL is a 6" specification grade LED wall wash downlight that utilizes remote phosphor technology to obtain color consistency, energy savings, and low maintenance costs. 50,000 hours minimum life up to 35°C (95°F) in open plenum applications.

### HOUSING:

One-piece 22 gauge non-corrosive steel platform. Pre-wired j-box with snap-on cover for easy access. Snap-in connection from driver compartment allows easy installation of light engine/trim assembly without tools above or below the ceiling and can be upgraded to accommodate technology improvements. Approve for 8 (4 in/4 out) No. 12 AWG conductors rated for 90°C through wiring.

### REFLECTOR:

High purity aluminum, Alzak, iridescence suppressed, semi-diffuse reflector. Self-trim standard. Painted white self-trim (WT) available as option.

### LED LIGHT ENGINE:

The LF6SL uses the Philips Fortimo DLM Gen 5 LED Module with remote phosphor technology. This technology provides controlled color consistency (3 SDCM) from fixture to fixture. The system is designed for optional life and lumen maintenance (>50,000 hours at 70% lumen maintenance). Both reflector and light engine assembly are mechanically retained to housing. The light engine comes standard with 90 CRI in all Kelvin temperatures.

### LED DRIVER:

The LF6SL utilizes the Philips Fortimo LED Driver specifically designed to optimize efficiency of the Fortimo DLM Module. Driver is designed to match the 50,000 hours minimum life expectancy of the system. Meets UL Class 2, inherent short circuit protection, self limited, overload protected. If critical temperatures are reached on driver or LED module, integrated thermal feedback loop will gradually reduce current to protect system life. Driver is universal 120V-277V. Optional Lutron Series A driver is also available.

### DIMMING:

Comes standard with 0-10V dimming capability. Flicker-free dimming to 10%. 0-10V control may consume up to 1mA. 0-10V, Lutron 2 wire, 3 wire, and EcoSystem dimming available to 1% and DMX with RDM (remote device management) dimming to less than 0.1%.

### INSTALLATION:

Adjustable Bar hangers included (Not with CP housing). Universal adjustable mounting brackets also accept 1/2" EMT conduit or 1 1/2" or 3/4" lathing channel (by others) or Prescolite 24" bar hangers (B24 or B6).

### CERTIFICATIONS:

CSA certified to US and Canadian safety standards. Approved for through wiring. Non-IC rated.

### WARRANTY:

5 year warranty. See [www.prescolite.com](http://www.prescolite.com) for details.

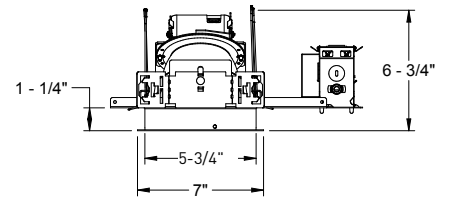
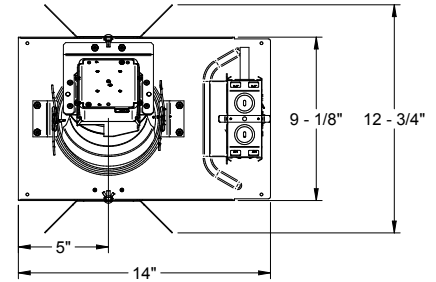
DATE: \_\_\_\_\_ TYPE: \_\_\_\_\_

FIRM NAME: \_\_\_\_\_

PROJECT: \_\_\_\_\_

# LiteFrame®

Ceiling Cutout: 6 1/4"  
Maximum Ceiling Thickness 1 1/4"  
For conversion to millimeters,  
multiply inches by 25.4  
Not to Scale



See page 3 for CP, LV(E) and NX(W)E lineart

CATALOG NUMBER:

EXAMPLE: LF6SLWW 6LFLS20L40KWW

Order housing, reflector, and accessories separately

ALTERNATIVE DIMMING TO 1% & 0.1% STANDARD 0-10V DIMMING

HOUSING	DRIVER OPTION	HOUSING OPTIONS	TRIM APERTURE	OUTPUT	KELVIN	REF. FINISH OPTIONS	REF. COLOR OPTIONS	REFLECTOR OPTIONS	ACCESSORIES
<input type="checkbox"/> <b>LF6SL</b> Standard Lumen 0-10V 10% dimming 120-277V	Standard 0-10V 10% Dimming <input type="checkbox"/> <b>DM1</b> 0-10V dimming at 1% <input type="checkbox"/> <b>DMT<sup>9,9</sup></b> SpectraSync™ Tunable White <input type="checkbox"/> <b>DMTW<sup>10</sup></b> SpectraSync™ Tunable Dim to Warm <b>VOLTAGE OPTION</b> Standard 120V-277V <input type="checkbox"/> <b>347</b> 347V	<input type="checkbox"/> <b>CP<sup>3,5,11</sup></b> Chicago Plenum <input type="checkbox"/> <b>WW<sup>2</sup></b> Wall Wash <input type="checkbox"/> <b>LV<sup>7</sup></b> Lutron Vive Enabled, 0-10V, 120-277V <input type="checkbox"/> <b>NXWE<sup>5,12,13</sup></b> NX Wireless Enabled <input type="checkbox"/> <b>NXE<sup>5,12,13</sup></b> NX Enabled, Dual SmartPorts	<input type="checkbox"/> <b>6LFLS</b> Semi-Diffuse Clear Alzak	<input type="checkbox"/> <b>11L</b> 1100 Lumen Module <input type="checkbox"/> <b>15L</b> 1500 Lumen Module <input type="checkbox"/> <b>20L<sup>11</sup></b> 2000 Lumen Module <input type="checkbox"/> <b>2750T</b> 2700K-5000K SpectraSync™ Tunable White <input type="checkbox"/> <b>2765T</b> 2700K-6500K SpectraSync™ Tunable White	<input type="checkbox"/> <b>30K</b> 3000 Kelvin, 90 CRI <input type="checkbox"/> <b>35K</b> 3500 Kelvin, 90 CRI <input type="checkbox"/> <b>40K</b> 4000 Kelvin, 90 CRI <input type="checkbox"/> <b>2230TD</b> 2200K-3000K SpectraSync™ Dim to Warm <input type="checkbox"/> <b>VS</b> Kurt Versen Softglow® <input type="checkbox"/> <b>VSS</b> Kurt Versen SoftSheen™	<input type="checkbox"/> <b>SP</b> Specular <input type="checkbox"/> <b>SS</b> Semi-Specular <input type="checkbox"/> <b>MFC</b> American Matte™ <input type="checkbox"/> <b>V</b> Kurt Versen Specular <input type="checkbox"/> <b>VS</b> Kurt Versen Softglow® <input type="checkbox"/> <b>VSS</b> Kurt Versen SoftSheen™	Standard Clear Alzak <input type="checkbox"/> <b>CG</b> Champagne Gold Alzak <input type="checkbox"/> <b>GD</b> Gold Alzak <input type="checkbox"/> <b>BL</b> Black Alzak <input type="checkbox"/> <b>WE</b> Wheat Alzak <input type="checkbox"/> <b>LW</b> Light Wheat Alzak <input type="checkbox"/> <b>PW</b> Pewter Alzak <input type="checkbox"/> <b>WH</b> Painted Matte White Reflector and Flange <input type="checkbox"/> <b>BC</b> Painted Black Reflector and Flange	<input type="checkbox"/> <b>WW<sup>2</sup></b> Wall Wash <b>TRIM OPTIONS</b> <input type="checkbox"/> <b>WT</b> Painted White Flange Only <input type="checkbox"/> <b>TRG</b> Trim Ring Gasket <input type="checkbox"/> <b>WF</b> Wide Flange	<input type="checkbox"/> <b>B24<sup>4</sup></b> Set of two 24" bar hangers for T-bar ceilings <input type="checkbox"/> <b>B6<sup>4</sup></b> Set of two (2) bar hangers for ceiling joist up to 24" centers <input type="checkbox"/> <b>LFSC6</b> 6" Reflector screw cover <input type="checkbox"/> <b>LFSC6EM</b> 6" Reflector screw cover for EM <input type="checkbox"/> <b>Signos6</b> Architectural glass elements. Refer to specification sheets ARCH-SIG-001 and -003 <input type="checkbox"/> <b>LiteGear<sup>6</sup></b> Inverter, single phase central lighting, 125VA-250VA <input type="checkbox"/> <b>LPS Series<sup>6</sup></b> LiteFrame micro-inverter, 20VA-55VA

**Use with HDM/2DM/DMX dimming option:  
Match Housing to Trim Output**

- |  |  |  |  |
|--|--|--|--|
| <input type="checkbox"/> <b>LF6SL11L</b><br><input type="checkbox"/> <b>LF6SL15L</b><br><input type="checkbox"/> <b>LF6SL20L</b> | <input type="checkbox"/> <b>HDM<sup>1</sup></b><br>Hi-Lume 1% 3-wire/<br>EcoSystem LED Driver<br><input type="checkbox"/> <b>2DM<sup>1</sup></b><br>Hi-Lume 1% 2-wire LED Driver (120V only)<br><input type="checkbox"/> <b>DMX<sup>1</sup></b><br>DMX with RDM dimming to <0.1% | <input type="checkbox"/> <b>120</b><br>120V<br><input type="checkbox"/> <b>277</b><br>277V | <input type="checkbox"/> <b>LVE (HDM Only)</b><br>Lutron Vive Enabled, EcoSystem |
|--|--|--|--|

\*HDM, 2DM & DMX also available with EMR and WWW

### Notes:

- For HDM, 2DM, and DMX options, housing output must match trim output
- WW option required on both housing and trim.
- Not available with 347V
- For WW fixtures bar hanger accessory should be selected with CP housing, not included as standard.
- Not available with DMX, LV, or LVE
- See Central Inverter compatibility note and web links on page 2
- LV requires standard dimming or DM1
- Must select either 2750T or 2765T Kelvin with DMT driver option
- Not available with LV or LVE
- Must select 2230TD with DMTW driver option
- Not compatible with DMT or DMTW
- Not available with CP option
- Not available with HDM, 2DM or DMX

# LiteFrame - 6" LF6SL Wall Wash

DRIVER DATA	LF6SL20L 30K	LF6SL15L 30K	LF6SL11L 30K
Input Voltage	120-277V	120-277V	120-277V
Input Frequency	50/60 Hz	50/60 Hz	50/60 Hz
Input Current	0.210A (120V)	0.160A (120V)	0.116(120V)
	0.091 (277V)	0.069 (277V)	0.050 (277V)
Input Power	25.2W	19.2W	13.9W
Constant Current Output	200-1000mA	200-1000mA	200-1000mA
Power Factor	≥0.90	≥0.90	0.90
THD	<20%	<20%	<20%
EMI Filtering	FCC 47CFR Part 15, Class A	FCC 47CFR Part 15, Class A	FCC 47CFR Part 15, Class A
Operating Temperature	-20°C to 35°C	-20°C to 35°C	-20°C to 35°C
Dimming	0-10V	0-10V	0-10V

Over-voltage, over-current, short-circuit protected

\*Power consumption and photometric output may vary slightly with HDM option.

## Dimming Compatibility Table

Dimming Ballast	Manufacturer	Web Link
DM/DM1	Lutron DTV	<a href="http://bit.ly/11jSvZg">http://bit.ly/11jSvZg</a>
DM/DM1	Leviton AWRMG-7xx, AWSMG-7xx, AWSMT-7xx	<a href="http://bit.ly/1Bjn2R9">http://bit.ly/1Bjn2R9</a>
HDM	Lutron	<a href="http://bit.ly/1vtjHAL">http://bit.ly/1vtjHAL</a>
2DM	Lutron	<a href="http://bit.ly/1S4WjXK">http://bit.ly/1S4WjXK</a>

## DMX

See instruction sheet on [www.prescolite.com](http://www.prescolite.com) for connection & installation information.

Other useful links: <http://www.eldoled.com/led-drivers/powerdrive/50-watt/ac-561s/>

## Central Inverters

For full fixture output in back-up mode, we recommend you visit [www.dual-lite.com](http://www.dual-lite.com) for your Central Lighting Inverter options. Please contact your local Hubbell representative for any assistance with proper sizing and loading of your inverter selection. Central lighting inverters must be ordered separately.

**LiteGear:** [www.dual-lite.com/products/litegear\\_lg\\_series](http://www.dual-lite.com/products/litegear_lg_series)

**LPS Series:** [www.dual-lite.com/products/lps](http://www.dual-lite.com/products/lps)

## SpectraSync™ Color Tuning Technology:

Control your space based on the needs of the application, specific activities throughout the day and preferences of the occupants with two distinct SpectraSync™ Color Tuning Technology.

**Dim to Warm:** Dim to Warm mimics the familiar warming effect that occurs with traditional incandescent sources as they are dimmed. (Available with 2200K-3000K).

**Tunable White:** Tunable White offers users the ability to tailor CCT to their personal preference, enhancing task visibility, material and colors or the aesthetics of the space. (Available with 2700K-5000K or 2700K-6500K).

See separate [SpectraSync™ Tech Sheet](#) for additional details.

## NX Distributed Intelligence:

Supports indoor and outdoor applications, wired, wireless and hybrid networked NX lighting control deployments and enables emerging applications such as Hubbell Lighting's SpectraSync™ color tuning technology.

See separate [NX™ Solutions Guide](#) for additional details.

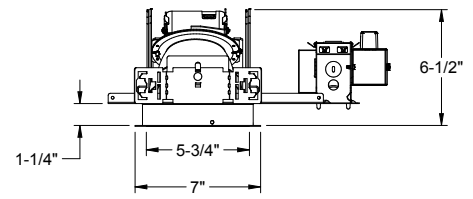
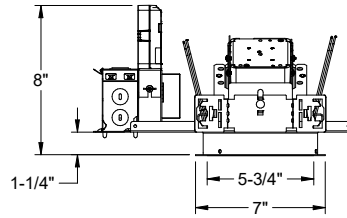
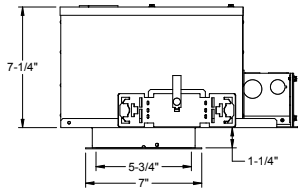
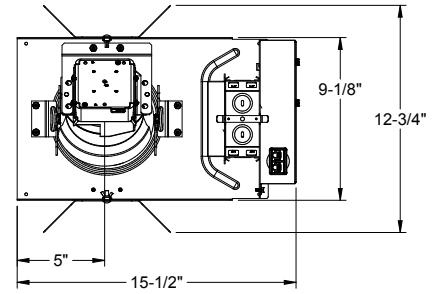
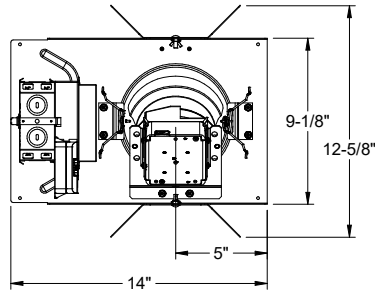
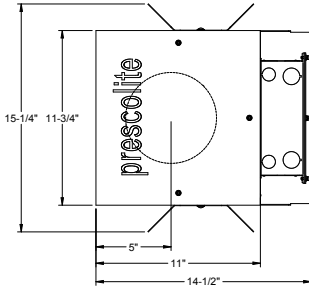
See Hubbell Controls Solution [NX Brochure](#).



Web: [www.prescolite.com](http://www.prescolite.com) • Tech Support: (888) 777-4832  
 701 Millennium Boulevard • Greenville, SC 29607 U.S.A. • Phone (864) 678-1000  
 Copyright ©2017 Prescolite, Inc., a division of Hubbell Lighting, Inc. All Rights Reserved  
 Specifications subject to change without notice. • Printed in U.S.A. • LFR-LED-026 • 9/18/17



# LiteFrame - 6" LF6SL Wall Wash



**LF6SLWW CP**

**LF6SLWW LV(E)**

**LF6SLWW NX(W)E**

