

SERVICE BULLETIN

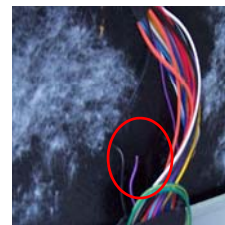


LG Electronics Inc.

Date of issue: 01 Mar 2007

Buyer Model: LDF7811XX, LDF7810XX, LDS5811XX, LDF6810XX, LDF8812XX	
LGE Model: LD-6100XX, LD-6105XX, LD-6090XX, LD-6300XX, LD-6310XX	
Buyer Name: LGEAI, LGECI	Effective Date: 02 Mar 2007
Applicable Serial No: 501KWXXXXX ~ 702KWXXXXX	
Subject: Doorliner Damping sheet	

- 1. **Phenomenon** : Harness wire cut off
- 2. **Reason** : Wire bury in the damping sheet



3.Improvement

- Door liner	Old type	New type
P/No:4936ED1002A	Add non woven fabric	
SERIAL # 501KW - 612KWXXXXXX 601XXXXXXXXXX (only) 701XXXXXXXXXX and above		HARNESS 6877DD1002A 6877DD1002B 6877DD1002C
		DOOR LINER AGM34891601 AGM34891601 4937DD1001C
*DO NOT install door liner 4937DD1001C on models with serial number under 701 or it will interfere with the blower motor operation and the control panel.		

* Interchangeability Code	Alphabetic Code	Numeral Code	
	A Interchangeable : Old and new parts can be used in products as the bulletin regardless of manufacturing date.	1	To improve performance
	B Old parts can be substituted for new parts : Old parts can be used in products regardless of manufacture date. New parts can be used in new products only.	2	To improve productivity
	C New parts can be substituted for old parts : Only new parts can be used in products regardless of manufacture date.	3	To improve reliability
	D Not interchangeable : New parts can be used in new products only.	4	Change of material or dimension
		5 Addition	
		6 Deletion	
		7 Correction	

Y.H.Kim

Y.H Kim
Dish Washer Engineering
Design Department.

SERVICE BULLETIN

WM

WM

LG Electronics Inc.

Date of issue: 01 Mar 2007

4.SVC Method

-Improved parts have been applied to all models that were produced since 1 March 2007. Desire to change by improved New Door liner ASM, if badness happen such as preceding descriptions.

-Temporary SVC

When wire cut off, add felt to protect wire melted after reconnection with insulation tape.

1) Connecting wire



Insulation tape

2) Divide felt and Add divided felt to damping sheet to protect wire melted



[Difference of before and after]

[P/No] Door liner ASM : 4936ED1002A

Difference of improved parts are confirmed by fabric, Because P/No is equal.

* Interchangeability Code	Alphabetic Code	Numeral Code
	A	Interchangeable: Old and new parts can be used in products as the bulletin regardless of manufacturing date.
B	Old parts can be substituted for new parts: Old parts can be used in products regardless of manufacture date. New parts can be used in new products only.	2 To improve productivity
C	New parts can be substituted for old parts: Only new parts can be used in products regardless of manufacture date.	3 To improve reliability
D	Not interchangeable: New parts can be used in new products only.	4 Change of material or dimension
		5 Addition
		6 Deletion
		7 Correction

Y.H.Kim

Y.H Kim
Dish Washer Engineering
Design Department.