



FEATURES

- LED technology in a lensed striplight
- Matches LAW (LED) and AWN (fluorescent) in appearance
- Long life 50,000 hour LEDs at L80 for reduced maintenance
- Four LED color choices with 80 CRI
- Available in 4' or 8' lengths
- Choice of four lumen packages
- Heavy gauge steel housing, die embossed for cooler operation and longer life
- Clear prismatic diffuser with flat bottom and vertical sides
- Hinges from either side
- LED light engine accessible for future maintenance or upgrades; modular replaceability
- Surface mount or stem mount
- QR code for traceability
- DesignLights Consortium® qualified
- 5 Year Warranty

PROJECT INFORMATION

Project Name _____

Type _____

Catalog No. _____

Date _____

CONSTRUCTION

Housing and wireway are formed from code-gauge steel. Housing components act as heat sink for LED heat dissipation. Knockouts are provided for electrical access and mounting.

SHIELDING

100% clear prismatic acrylic.

FINISH

All parts pre-painted with high gloss baked white enamel, minimum reflectance 86%, applied over iron phosphate pre-treatment for maximum adhesion and rust resistance.

ELECTRICAL

Long-life LEDs are rated for 50,000 hours at L80 lumen maintenance. Driver options include fixed output for on/off function, step dimming (high/low/off) or continuous 0-10V dimming.

CERTIFICATION

All luminaires are built to UL 1598 and 2108 standards, and bear appropriate CSA labels. Damp location labeling is standard. Emergency equipped fixtures built to UL924. Adheres to LM79, LM80 and TM21 industry standards. DesignLights Consortium® (DLC) qualified. Please refer to the DLC website for specific product qualifications at www.designlights.org.

WARRANTY

Five year warranty (Terms and Conditions Apply).

ORDERING INFORMATION

EXAMPLE LR04-35ML-ESDU

LRO		SIZE	COLOR TEMP	LUMEN OUTPUT	DRIVER	VOLTAGE	OPTIONS
MODEL	LRO LED Lensed Strip	4 4'	35 3500K	LW Low Watt	E Fixed Output	U 120V-277V	ELL14 Emergency Battery Pack, 1400 Lumens ^{1,2}
		8 8'	40 4000K	ML Medium Lumen	ESD Step Dimming	347 347V (E, ED, ED1 only)	GLR Fast Blow Fuse
				HL High Lumen	ED 0-10V Dimming		PAF Paint After Fabrication
				VL Very High Lumen	ED1 0-10V 1% Dimming		NYC NYC Compliant
				See Product Availability Table below.	LUTH Hi-lume 1% EcoSystem LED driver with Soft-on, Fade-to-Black dimming technology ³		
					LUTS 5-Series EcoSystem LED driver ³		

PRODUCT AVAILABILITY			
SIZE	OUTPUT	NOMINAL LUMENS (3500K)	NOMINAL WATTS
4'	LW	2,700	25
	ML	5,000	53
	HL	6,400	63
	VL	9,600	105
8'	LW	5,400	50
	ML	10,000	106
	HL	12,800	126
	VL	19,200	210

ACCESSORIES (ORDER SEPARATELY)

- ITB4** T-Bar Hanger
- S18** 18" Stem, Canopy
- SS18** 18" Swivel Stem, 45° Swivel, Canopy

Actual lumens will vary according to color temperature and other factors. For exact lumens and watts see specific photometric test(s).

¹ For compatibility with Dual-Lite LiteGear® inverters in lieu of installed battery pack, contact Hubbell Lighting representative.
² ELL14 not available with VL lumen packages.
³ Not available in VL packages

PHOTOMETRIC DATA

Test #8319 Test Date 12/19/2013

LUMINAIRE DATA

Luminaire	LRO4-35HL-EDU LRO LED Corridor, Wraps 6" x 48" LED LUMINAIRE WITH WRAPAROUND ACRYLIC PRISMED LENS
Ballast	(2) D185CQ30UNVA-A
Ballast Factor	1.00
Lamp	LED
Fixture Lumens	6362
Watts	62.10
Mounting	Surface
Shielding Angle	0° = 90 90° = 90
Spacing Criterion	0° = 1.29 90° = 1.18
Luminous Opening in feet	Length: 4.00 Width: 0.50 Height: 0.21

ZONAL LUMEN SUMMARY

Zone	Lumens	%Lamp	%Fixt.
0-30	1891	29.7	29.7
0-40	3009	47.3	47.3
0-60	4684	73.6	73.6
0-90	5792	91.0	91.0
0-180	6362	100.0	100.0

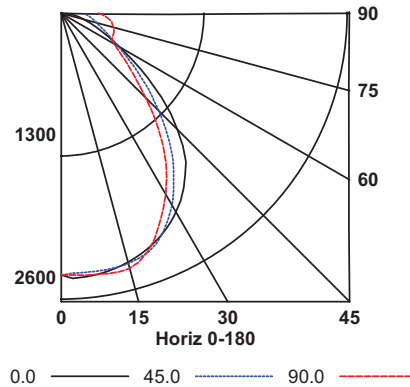
ENERGY DATA

Total Luminaire Efficiency	100.0%
Total Lumens per Watt	102
ANSI/IESNA RP-1-2004 Compliance	Noncompliant
Comparative Yearly Lighting Energy Cost per 1000 Lumens	\$2.33 based on 3000 hrs. and \$0.08 per KWH

COEFFICIENTS OF UTILIZATION (%)

RCR	RC	80			70			50			0		
		RW	70	50	30	10	70	50	30	10	50	30	10
1	106	102	97	93	103	98	95	91	93	89	86	76	
2	97	89	83	77	94	87	81	76	82	77	73	64	
3	89	79	72	65	86	77	70	64	73	67	62	55	
4	82	71	63	56	79	69	61	55	65	59	54	48	
5	76	64	55	49	73	62	54	48	59	52	47	42	
6	71	58	49	43	68	57	49	43	54	47	42	38	
7	66	53	44	39	63	52	44	38	49	42	37	34	
8	61	48	40	35	59	47	40	34	45	38	34	30	
9	57	45	37	31	56	44	36	31	42	35	30	27	
10	54	41	34	29	52	40	33	28	39	32	28	25	

INDOOR CANDELA PLOT



AVG. LUMINANCE (Candela/Sq. M.)

Average Luminance Angle	0.0	22.5	45.0	67.5	90.0
0	12804	12804	12804	12804	12804
30	12570	11505	10487	9702	9498
40	11850	9957	8390	7447	7138
45	10790	8787	7171	6130	5826
50	9369	7352	5964	5002	4754
55	7699	5946	4853	4203	3965
60	6068	4709	4084	3645	3464
65	4910	3745	3561	3409	3424
70	4181	3167	3233	3546	3726
75	3791	2802	3110	3717	3969
80	3463	2495	3083	3899	4261
85	2740	2185	3127	4121	4418

RCR = Room Cavity Ratio

RC = Effective Ceiling Cavity Reflectance RW = Wall Reflectance

Test #8317 Test Date 12/18/2013

LUMINAIRE DATA

Luminaire	LRO4-35LU-EDU LRO LED Corridor, Wraps 6" x 48" LED LUMINAIRE WITH WRAPAROUND ACRYLIC PRISMED LENS
Ballast	D150CQ25UNVA-A
Ballast Factor	1.00
Lamp	LED
Fixture Lumens	2683
Watts	25.30
Mounting	Surface
Shielding Angle	0° = 90 90° = 90
Spacing Criterion	0° = 1.26 90° = 1.18
Luminous Opening in feet	Length: 4.00 Width: 0.50 Height: 0.21

ZONAL LUMEN SUMMARY

Zone	Lumens	%Lamp	%Fixt.
0-30	799	29.8	29.8
0-40	1270	47.3	47.3
0-60	1973	73.5	73.5
0-90	2441	91.0	91.0
0-180	2683	100.0	100.0

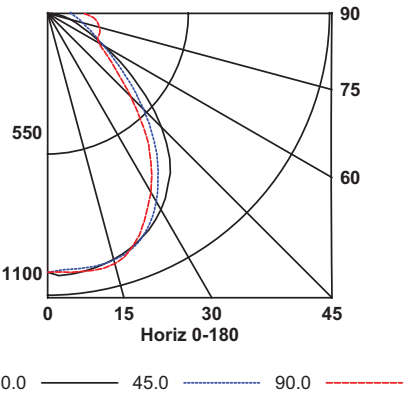
ENERGY DATA

Total Luminaire Efficiency	100.0%
Total Lumens per Watt	106
ANSI/IESNA RP-1-2004 Compliance	Noncompliant
Comparative Yearly Lighting Energy Cost per 1000 Lumens	\$2.24 based on 3000 hrs. and \$0.08 per KWH

COEFFICIENTS OF UTILIZATION (%)

RCR	RC	80			70			50			0		
		RW	70	50	30	10	70	50	30	10	50	30	10
1	106	102	97	93	103	98	95	91	93	89	86	76	
2	97	89	83	77	94	87	81	76	82	77	73	64	
3	89	79	72	65	86	77	70	64	73	67	62	55	
4	82	71	63	56	79	69	61	55	65	59	54	48	
5	76	64	55	49	73	62	54	48	59	52	47	42	
6	71	58	49	43	68	57	49	43	54	47	42	38	
7	66	53	44	39	63	52	44	38	49	42	37	34	
8	61	48	40	35	59	47	40	34	45	39	34	30	
9	57	45	37	31	56	44	36	31	42	35	31	27	
10	54	41	34	29	52	40	33	28	39	32	28	25	

INDOOR CANDELA PLOT



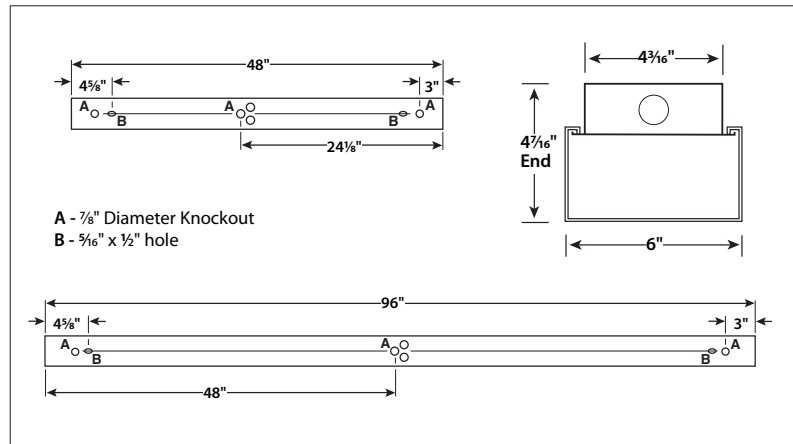
AVG. LUMINANCE (Candela/Sq. M.)

Average Luminance Angle	0.0	22.5	45.0	67.5	90.0
0	5430	5430	5430	5430	5430
30	5326	4841	4407	4109	4026
40	4980	4201	3528	3135	3018
45	4541	3682	3018	2567	2455
50	3924	3103	2503	2073	1970
55	3221	2514	2033	1737	1654
60	2555	1983	1711	1520	1446
65	2049	1600	1506	1433	1447
70	1747	1339	1362	1506	1585
75	1582	1179	1314	1574	1685
80	1433	1063	1317	1655	1805
85	1081	929	1333	1755	1884

RCR = Room Cavity Ratio

RC = Effective Ceiling Cavity Reflectance RW = Wall Reflectance

DIMENSIONAL DATA



NOTE: All dimensions are in inches; dimensions and specifications are subject to change without notice. Please consult factory or check sample for verification.