



Recessed Step Light **37CFQ13EB**

One 13W Quad Tube Compact
Fluorescent Lamp
Non-IC Rated
120V, 208V, 240V, or 277V

DATE: _____ TYPE: _____

FIRM NAME: _____

PROJECT: _____

LiteStep

For conversion to millimeters,
multiply inches by 25.4
Not to Scale

APPLICATIONS:

The 37CFQ13EB compact fluorescent step light is a heavy-duty, energy efficient step light for a wide variety of interior and exterior applications. Fully gasketed, the 37CFQ13EB luminaire is approved for wet or concrete pour applications.

HOUSING:

Diecast aluminum housing with white baked enamel finish.

FACEPLATE:

Die cast aluminum faceplates are available with a choice of louvered with a prismatic glass lens (LF) or open with a prismatic glass lens (OF). Available in black (BL), bronze (BZ), white (WH) or Prescolite's exclusive Zet (Z, metallic silver) finish.

BALLAST:

One (1) multi-volt (120V thru 277V) compact fluorescent class "P" electronic ballast suitable for operating 13W quad tube lamps. Ballast is accessible through the housing for servicing. See reverse side for additional ballast information.

LAMP:

One (1) 13W (G24q-1 base) 4-pin quad tube compact fluorescent lamp. Lamp furnished by others.

SOCKET:

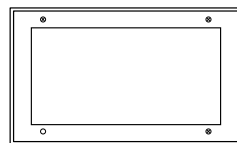
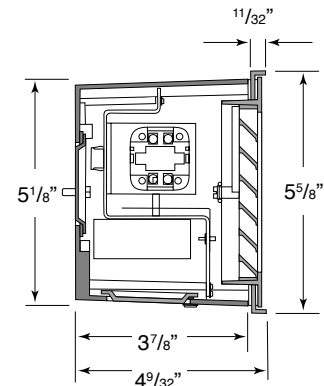
One (1) injection molded socket (G24q-1 base) suitable for 13W quad tube lamps.

INSTALLATION:

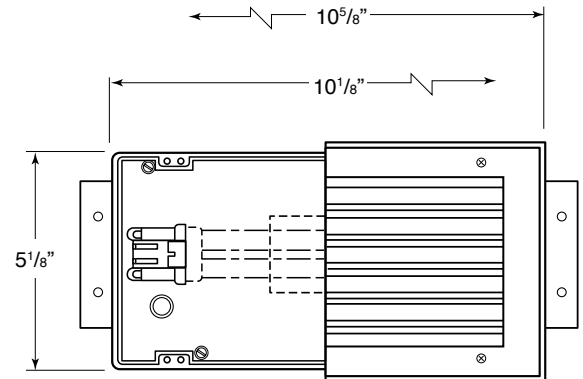
Galvanized steel mounting brackets are included.

LABELS/WEIGHT:

U.L., CSA approved for wet locations and concrete pour. Contact Technical Support for questions. Approved for exterior/interior installations. Non-IC rated. Consult factory for N.Y. City approval.



Open Faceplate (OF)



Louvered Faceplate (LF)

CATALOG NUMBER:

EXAMPLE: 37CFQ13EB - LFZ TPS

HOUSING	HOUSING OPTION -	FACEPLATE	FINISH	FACEPLATE OPTION
<input type="checkbox"/> 37CFQ13EB 13W quad tube CFL, Non-IC, recessed step light	<input type="checkbox"/> TW Through wiring capability <input type="checkbox"/> CDN 120V Canadian electrical code compliant ballast disconnect <input type="checkbox"/> CDN 347V Canadian electrical code compliant ballast disconnect	<input type="checkbox"/> LF Diecast aluminum louwered faceplate with prismatic lense <input type="checkbox"/> OF Diecast aluminum open faceplate with prismatic lense	<input type="checkbox"/> BL Black <input type="checkbox"/> BZ Bronze <input type="checkbox"/> WH White <input type="checkbox"/> Z Zet, metallic silver	<input type="checkbox"/> TPS Tamper proof screws

PHOTOMETRIC DATA

LiteStep Step Light - 37CFQ13EB

BALLAST DATA

13W

120V

277V

Total System Watts	16W	17W
Input Current (Amps)	0.14	0.06
Input Frequency in Hz	50/60	50/60
Power Factor	>97%	>97%
Ballast Factor	>98%	>98%
Total Harmonic Distortion	<10%	<10%
Minimum Starting Temp.	-18°C (0°F)	-18°C (0°F)

LAMP DATA

Rated Watts	13W
Rated Lumens	860
Efficacy (LPW)	66
Rated Life (hours)	10,000
CRI	82
Min. Starting Temp.	0°F
Base (4 Pin)	G24q-1

NOTES

Refer to www.prescolite.com for additional photometric tests (IES Files).



Web: www.prescolite.com • Tech Support: (888) 777-4832

701 Millennium Blvd., • Greenville, SC 29607 U.S.A. • Phone (864) 678-1000

Prescolite is a division of Hubbell Lighting, Inc., with representatives' offices throughout North America

Copyright ©2013 Prescolite, All Rights Reserved • Specifications subject to change without notice. • Printed in U.S.A. • LS002 • 4/9/13



Hubbell Lighting, Inc.