


**Model: WAP257**

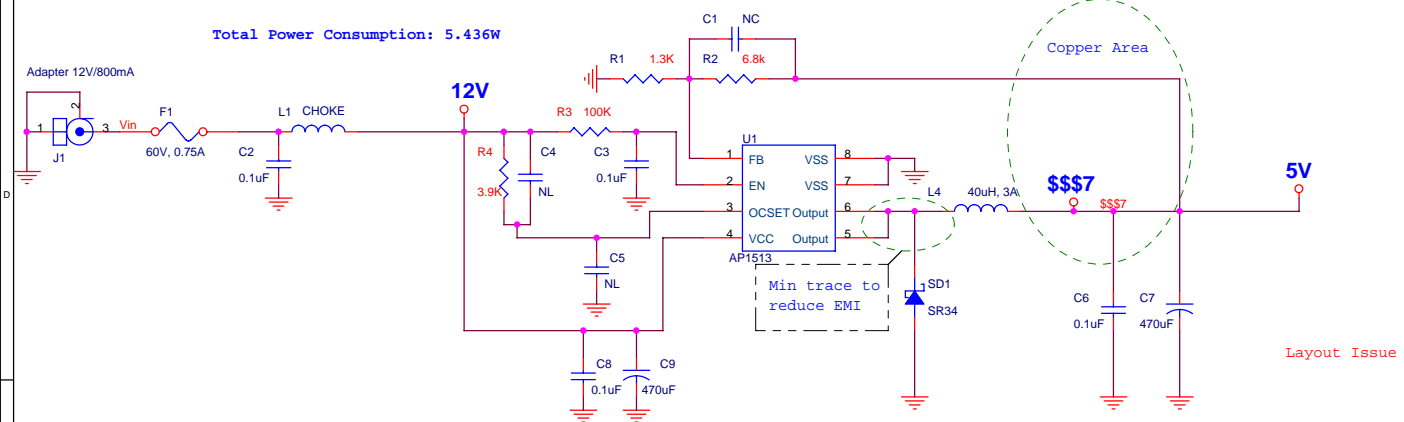
**Description: IEEE802.11g WLAN 2 Ports AP**

**Solution:  
RTL8186+RTL8225+RFMDdoubleD+RTL8201CP\*2**

WAP257 IEEE802.11g WLAN APr Revision History			
X10	2006/2/17	First Revision	

 <b>AboCom Systems, Inc</b>			
Title <b>802.11g WLAN 2 Ports AP (WAP257)</b>			
Size B	Document Number <b>Cover</b>		Rev D10
Date: Monday, June 26, 2006	Sheet	1	of 10

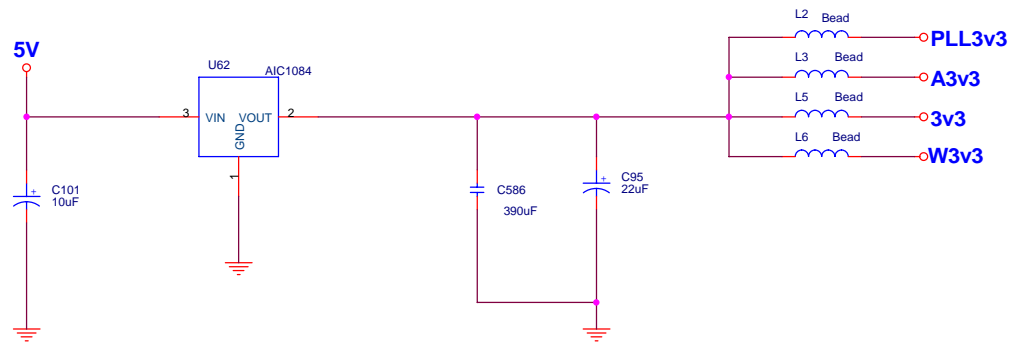
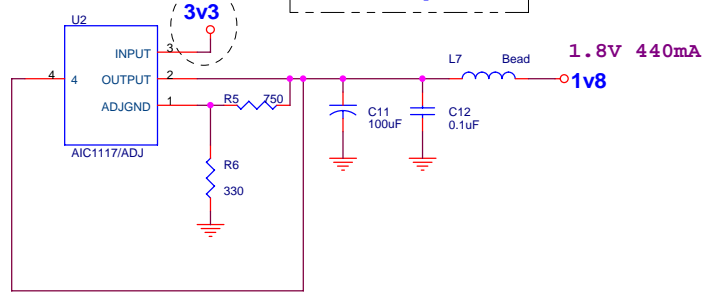
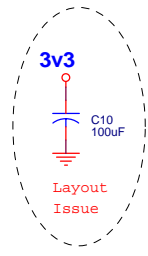
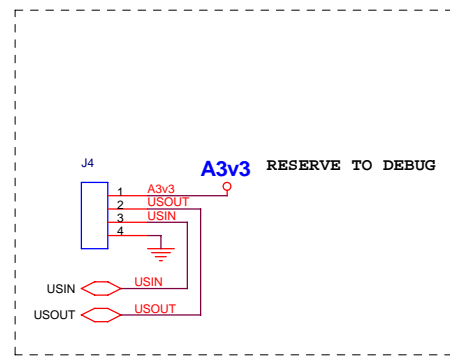
Total Power Consumption: 5.436W

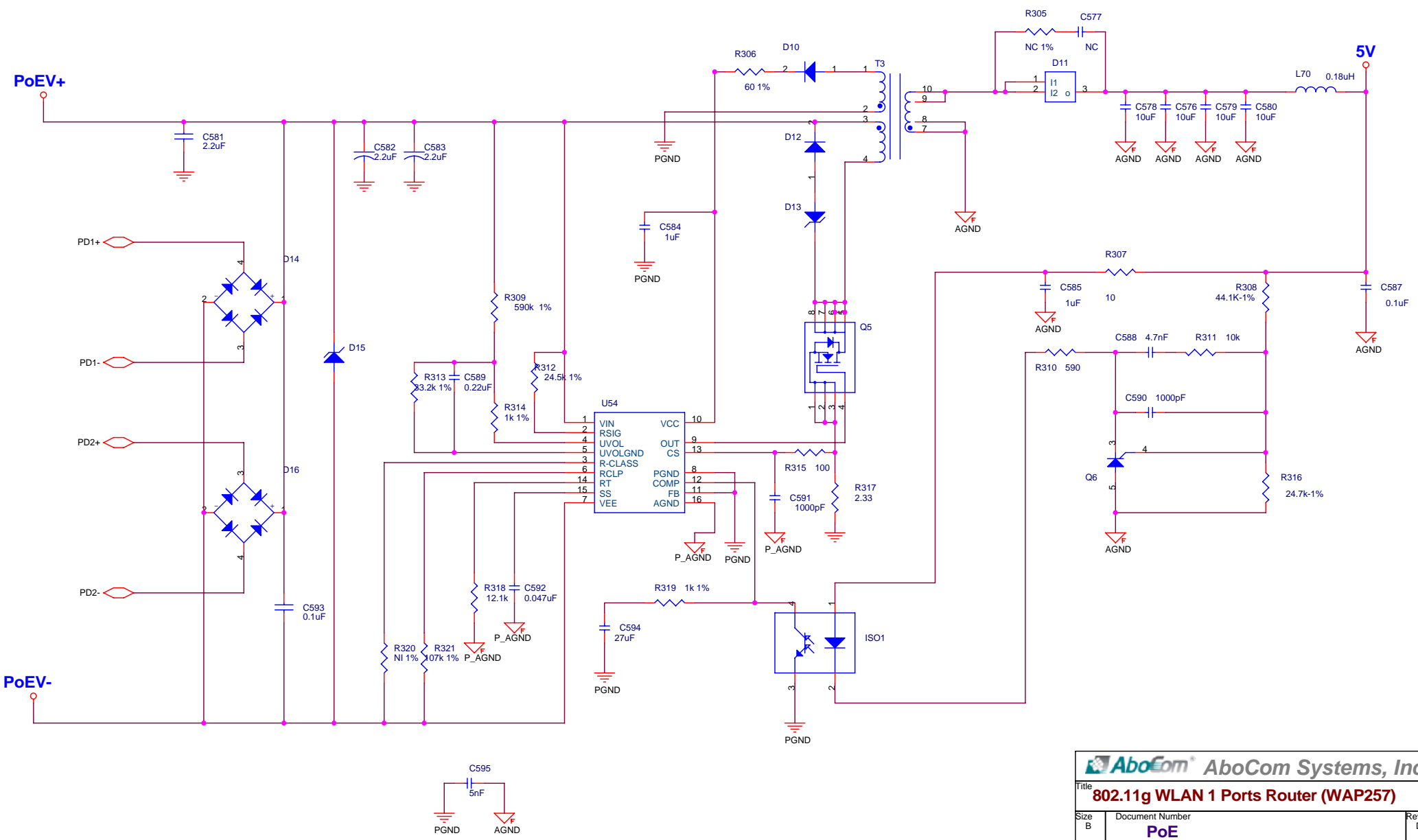


Layout Issue

Min trace to reduce EMI

If U2 is far away from filter cap, more caps are needed @ pin3





**AboCom** AboCom Systems, Inc

Title: **802.11g WLAN 1 Ports Router (WAP257)**

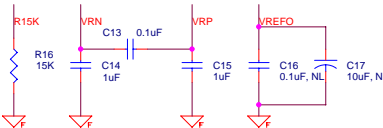
Size: B Document Number: **PoE** Rev: D10

Date: Monday, June 26, 2006 Sheet 3 of 10

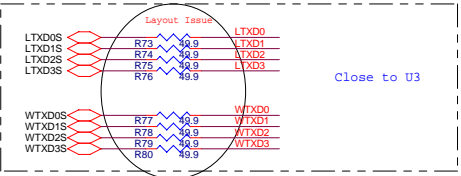
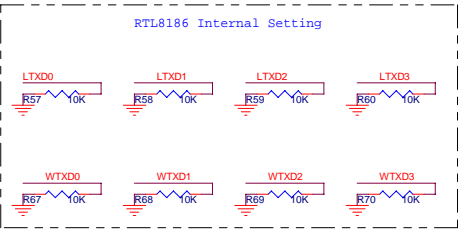
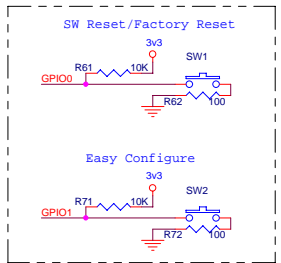
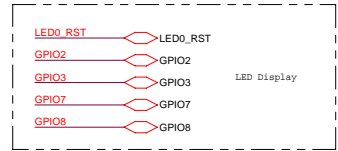
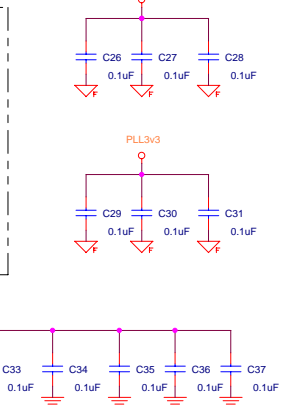
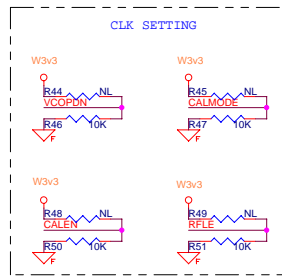
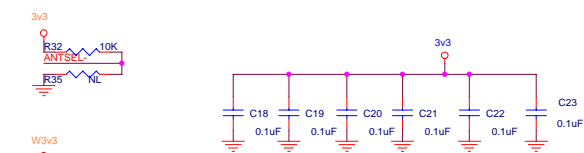
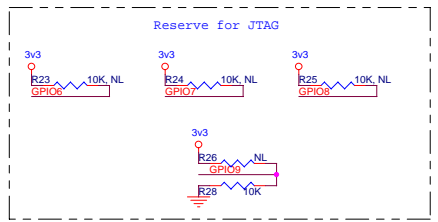
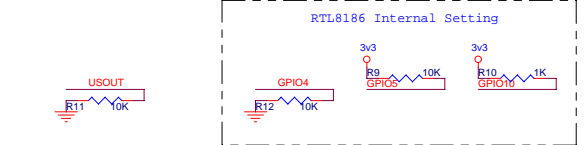
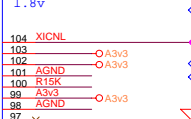


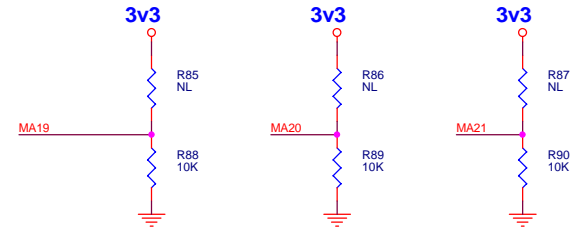
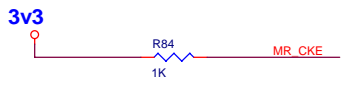
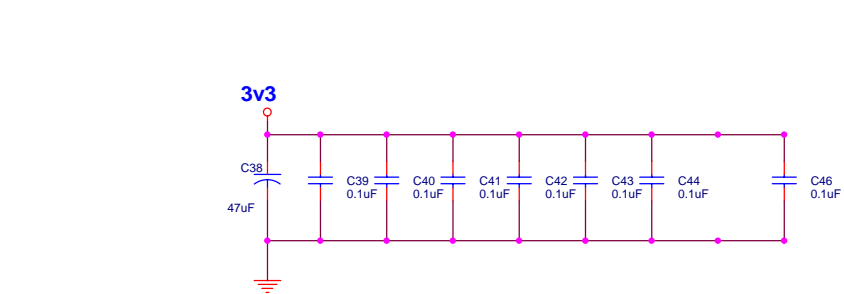
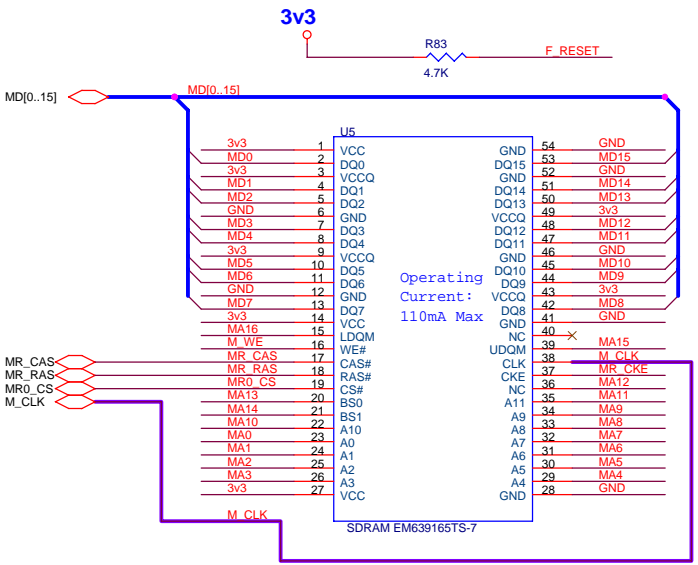
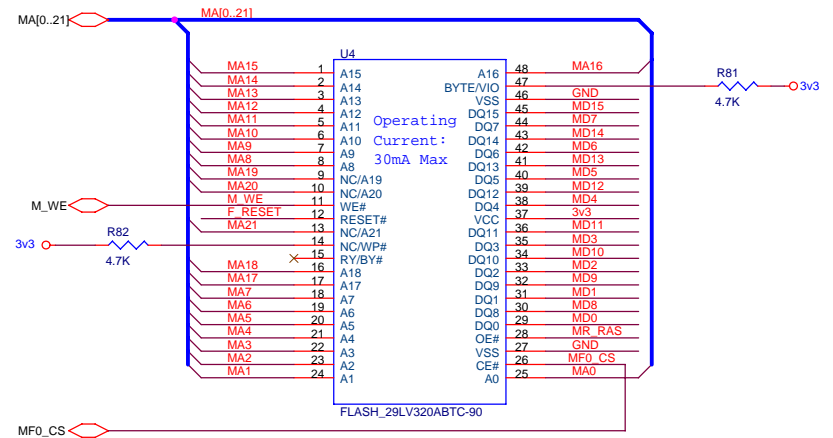
# RTL8186

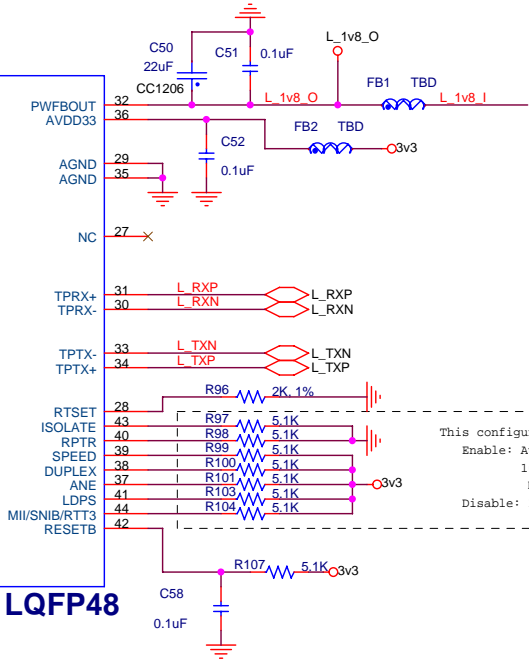
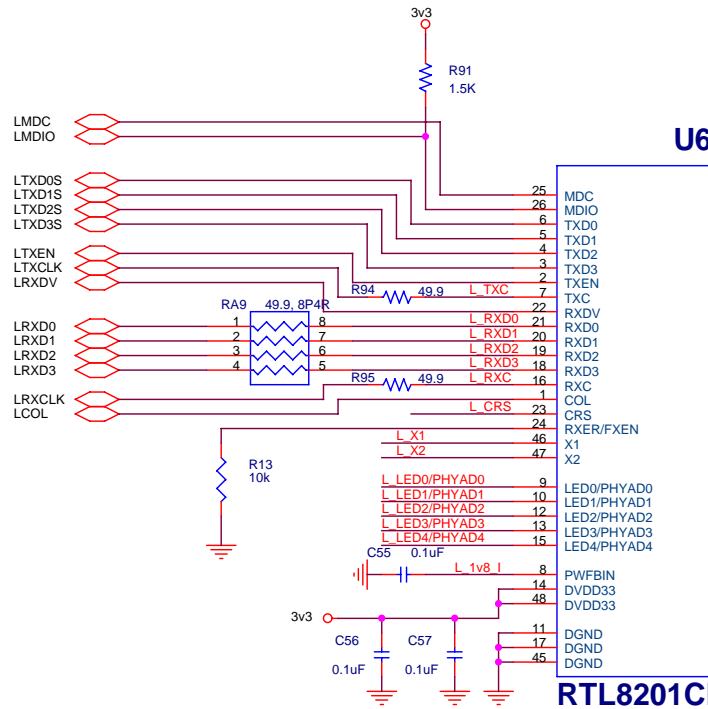
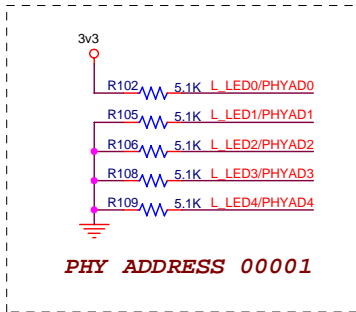
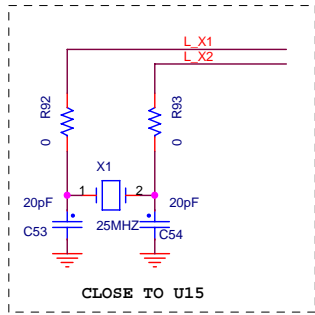
place close to RTL8186 as possible



Operation freq voltage selection btw 3.3v and 1.8v



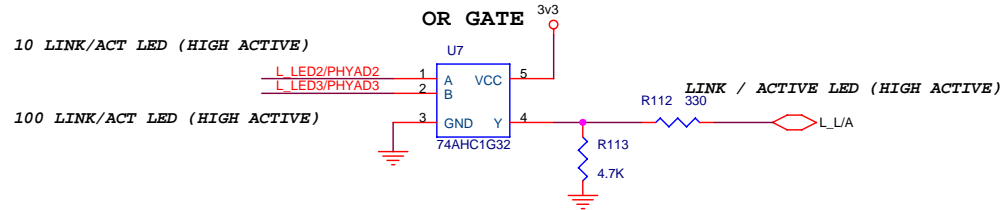
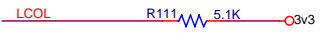




This configuration shows  
 Enable: Auto negotiation, Full duplex,  
 100Mbps, Link Down Power Saving,  
 MII interface  
 Disable: Isolate, Repeater mode

reserve to ensure operating at normal mode

Enable BL LED mode

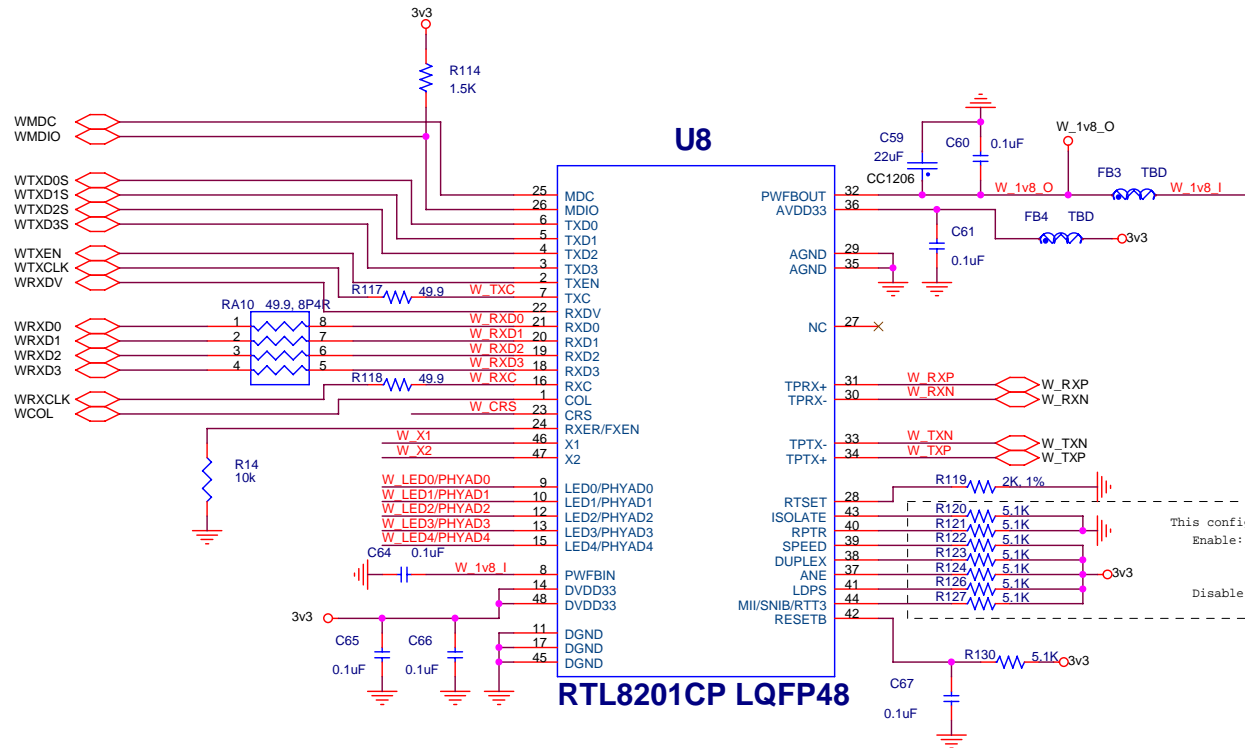
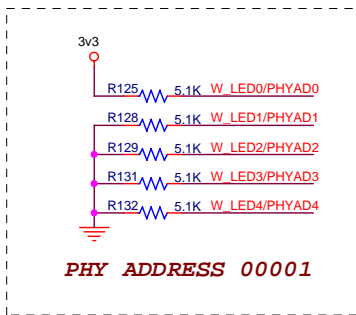
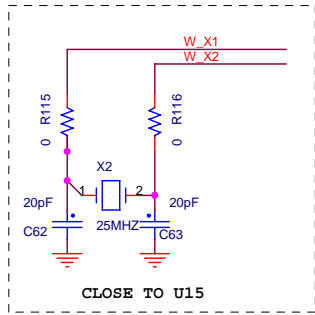


**AboCom Systems, Inc**

**802.11g WLAN 2 Ports AP (WAP257)**

1st PHY (RTL8201CP)

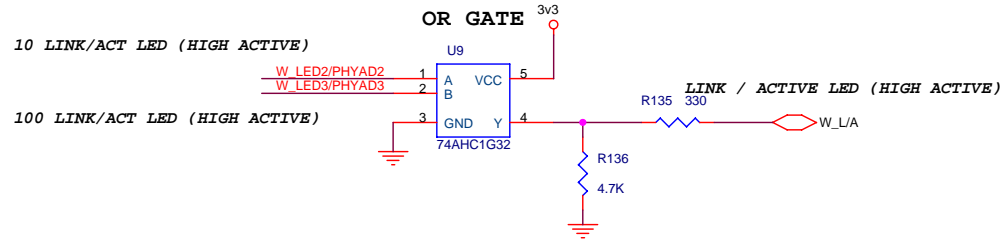
Date: Monday, June 26, 2006 Sheet 6 of 10



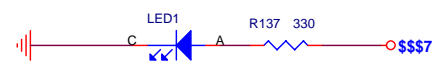
This configuration shows  
 Enable: Auto negotiation, Full duplex,  
 100Mbps, Link Down Power Saving,  
 MII interface  
 Disable: Isolate, Repeater mode

reserve to ensure operating at normal mode

Enable BL LED mode



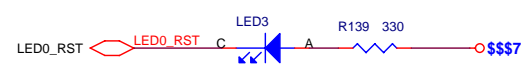
POWER LED



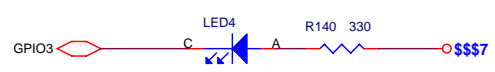
EZ Config LED



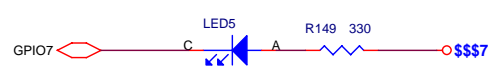
Wireless Link/Act LED



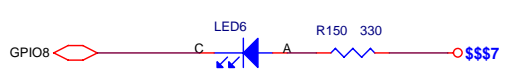
WEP LED



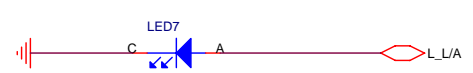
MAC Ctrl LED



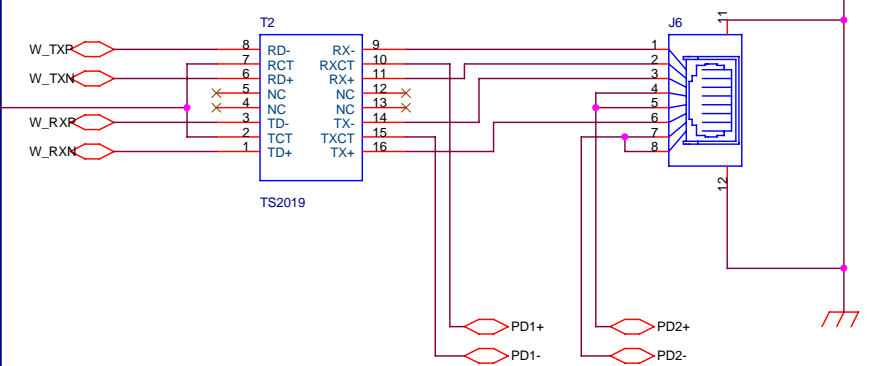
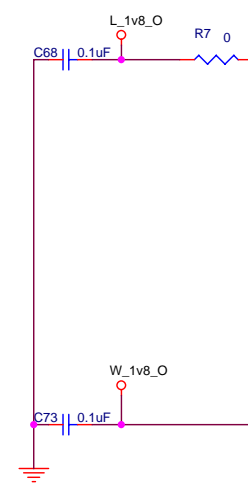
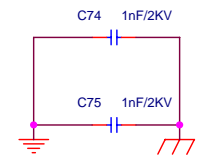
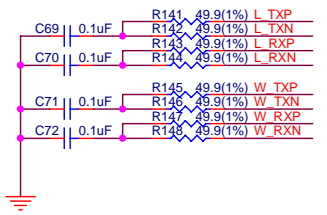
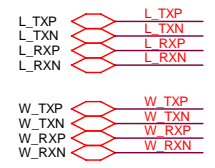
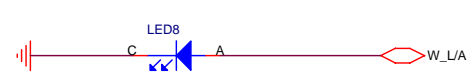
Bridge LED



LAN1 Link/Act

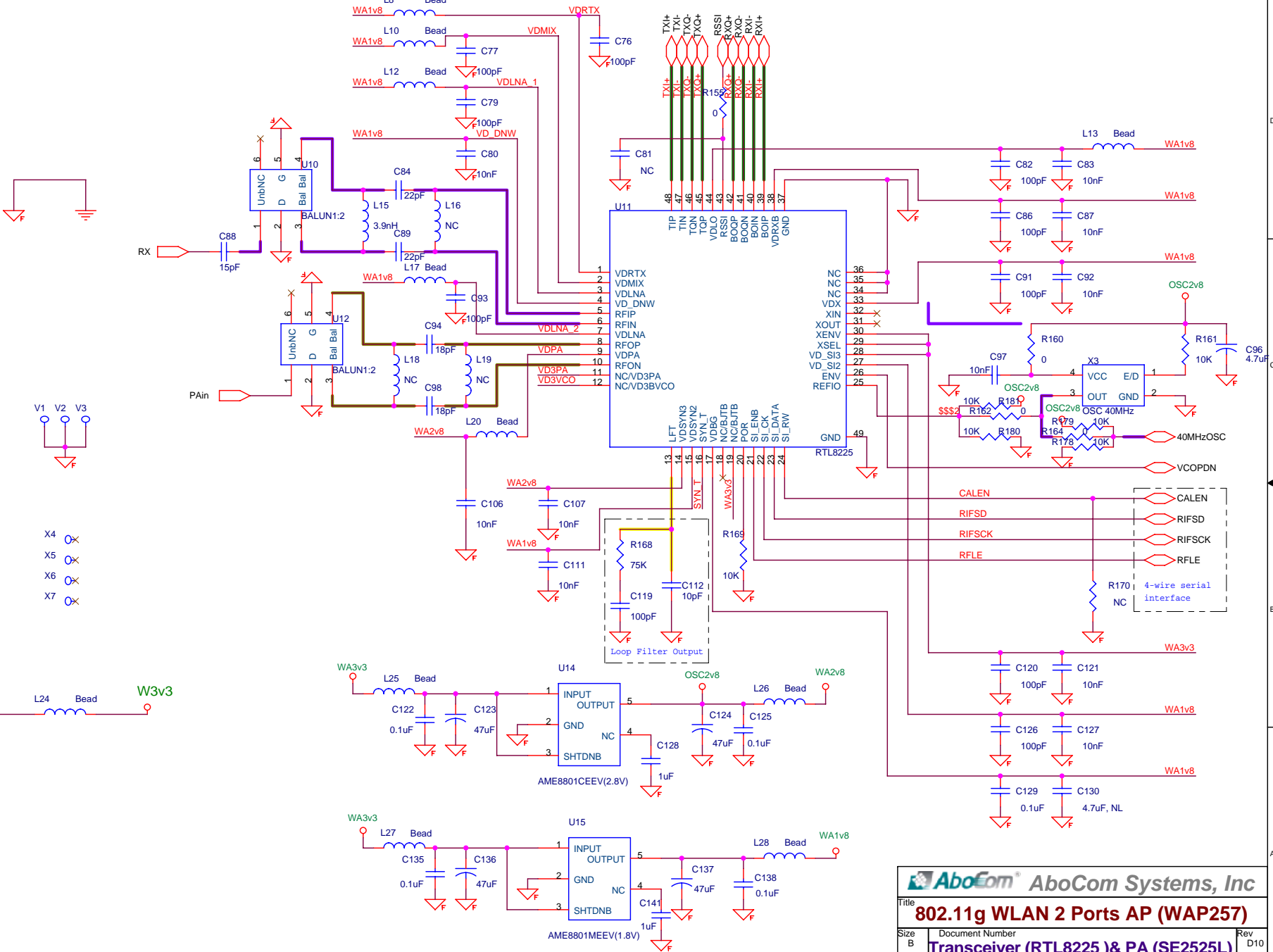
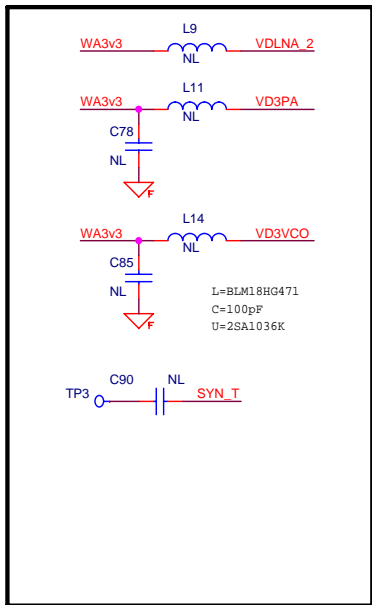


LAN2 Link/Act



**AboCom Systems, Inc**  
**802.11g WLAN 2 Ports AP (WAP257)**  
**RJ45 & LED**  
 Date: Monday, June 26, 2006 Sheet 8 of 10





**AboCom** AboCom Systems, Inc  
**802.11g WLAN 2 Ports AP (WAP257)**  
 Title  
 Size B Document Number  
**Transceiver (RTL8225) & PA (SE2525L)** Rev D10  
 Date: Monday, June 26, 2006 Sheet 9 of 10

