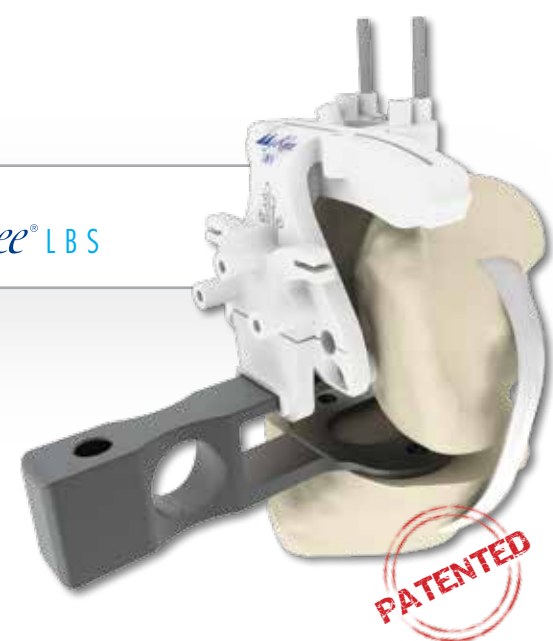


MyKnee<sup>®</sup> LBS



PATENTED

MyKnee<sup>®</sup> MIS



**SPECIAL FEATURES OF MYKNEE<sup>®</sup>:**

- THIS ONE WORKS! Proven accuracy and effectiveness of MyKnee<sup>®</sup> [1-11]
- Actual Cutting Blocks, not only pin positioners
- CT or MRI based
- Online case management
- Complete in-house technology ensuring the assistance of a personal MyKnee<sup>®</sup> technician and only 3 weeks lead time!

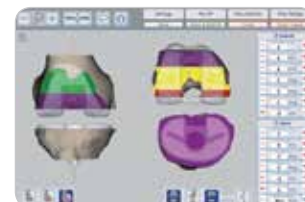
**MYKNEE<sup>®</sup> ADVENTURE**



1. Medacta<sup>®</sup> receives the CT or MRI images of the patient's leg.



2. A virtual positioning of the implant is proposed to the surgeon who can modify the planning as he wishes.



3. Starting from the 3D reconstruction of the joint and following the surgeon preferences, the MyKnee<sup>®</sup> preoperative planning is performed.



4. Once the planning has been validated by the surgeon, the in-house manufacturing process starts.

**HOW TO START WITH MYKNEE<sup>®</sup>**

**MYKNEE<sup>®</sup> EDUCATION PROGRAM**

When attempting a new procedure or working with new technology one is always challenged with the associated learning curve. This can often lead to discouragement and could even prevent perseverance which would prevent one from taking full advantage of the benefits offered by the new procedure or technology. To minimize this learning curve and guided by the successful AMIS<sup>®</sup> Education Program (continuously training hundreds of surgeons worldwide), the M.O.R.E. Institute has created a comprehensive Education Program which supports the surgeon step-by-step in the application of the MyKnee<sup>®</sup> system.

- **1<sup>st</sup> step: The Reference Center**  
Available in several countries worldwide you will have the opportunity to visit a Reference Center and attend live MyKnee<sup>®</sup> surgeries.
- **2<sup>nd</sup> step: The Learning Center**  
The MyKnee<sup>®</sup> Learning Center offers you the opportunity to attend live MyKnee<sup>®</sup> surgeries, meet experienced surgeons and discuss the clinical and economical aspects of MyKnee<sup>®</sup> technology.
- **3<sup>rd</sup> step: Support**  
Upon request you will receive the assistance of an experienced Reference Surgeon to assist with your first surgeries in your own hospital.
- **4<sup>th</sup> step: Continuous Education**  
You can continue your education through GMK<sup>®</sup> and MyKnee<sup>®</sup> user meetings, M.O.R.E. International events, Reference Center visits and other educational tools.

**Designed for you by you!**

Just contact Medacta<sup>®</sup> and we will arrange the Education Program for You!



Medacta International  
Siroda Regina - 6874 Castel San Pietro - Switzerland  
Phone: +41 91 696 60 60 - Fax: +41 91 696 60 66  
Info@medacta.ch - www.medacta.com

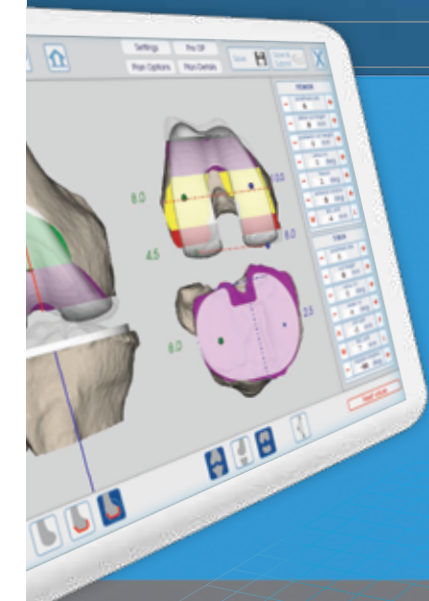
Medacta USA  
4725 Calle Quetzal Suite B - Camarillo California 93012  
Phone: +1 805 437 7085 - Fax: +1 805 437 7089  
Info@medacta.us.com

MyKnee<sup>®</sup> Leaflet  
99.my26.11US  
rev.03



PATIENT MATCHED TECHNOLOGY  
IN KNEE REPLACEMENT

DESIGNED FOR YOU BY YOU!



Hip | **Knee** | Spine | Navigation

Brochure



**INNOVATION: THE KEY TO SUCCESS**

Medacta's core philosophy is based on the belief that innovation is the key to success. This leads to a constant effort towards the development of cutting edge solutions for Orthopaedics.

MyKnee<sup>®</sup> is a patient-specific cutting block, allowing the surgeon to realize his pre-operative 3D planning, based on CT or MRI images of the patient's knee. This innovative concept combines different features giving potential benefits to both the surgeon and to the patient.

- Accurate implant positioning [1-11]
- No intramedullary canal violation
- Up to 60% reduction of surgical steps for bone resection and related time
- Potentially one extra case per surgery session
- Up to 66% reduction of time and cost in washing, assembling and sterilization procedures
- Interactive 3D web planning



**Designed for you by you!**



# PATIENT MATCHED TECHNOLOGY

## ACCURATE IMPLANT POSITIONING<sup>[1-11]</sup>

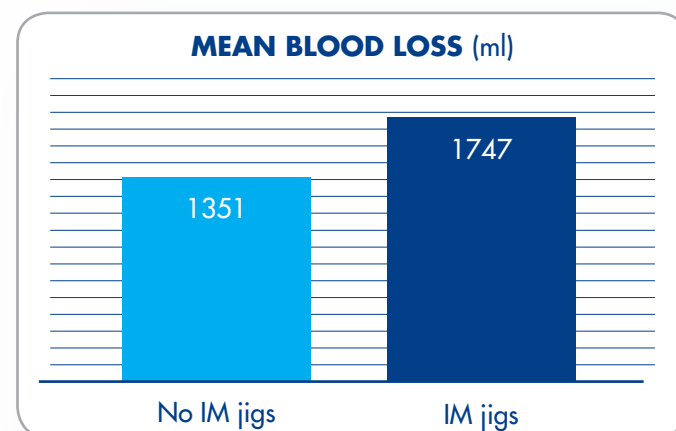
The MyKnee® cutting blocks are made to accurately match the surgeon's preoperative planning, based on individual patient's anatomy and his mechanical axis:

- **Unmistakable positioning:** The MyKnee® guides are positioned on the bone referring to distinct references: the osteophytes.
- **Maximized visibility** through the guides during both blocks positioning and resections.
- **Telescopic alignment rod:** The guides allow a drop rod to be connected, allowing you to validate intraoperatively the actual positioning and axial alignment of the blocks.



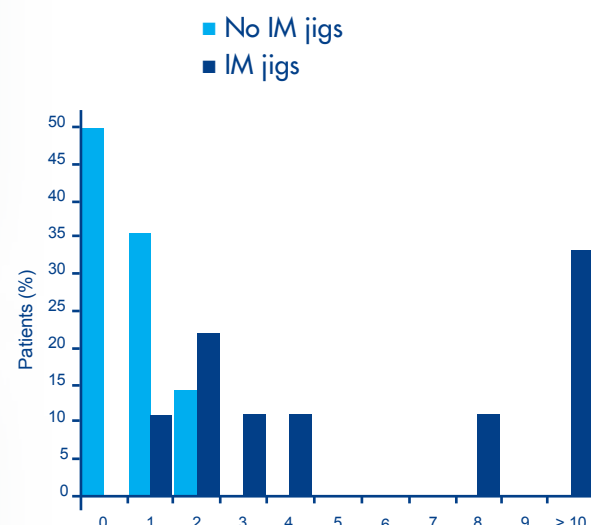
## NO INTRAMEDULLARY CANAL VIOLATION

- Less bleeding<sup>[13]</sup>

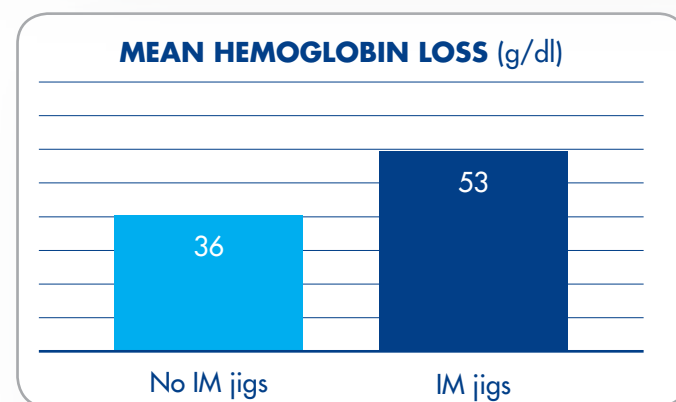


- Less risk of emboli<sup>[14]</sup>

Emboli distribution as a percentage of patients operated comparing using IntraMedullary jigs with not using IntraMedullary jigs.



- Less haemoglobin loss



Having less blood loss allows the hospital structure and patient to save money associated with transfusions<sup>[10]</sup>

## MYKNEE® OFFERS YOU MORE. . .

### ■ THIS ONE WORKS!

Published articles prove the accuracy and effectiveness of MyKnee®<sup>[1-11]</sup>

### ■ ACTUAL CUTTING BLOCKS, NOT ONLY PIN POSITIONERS

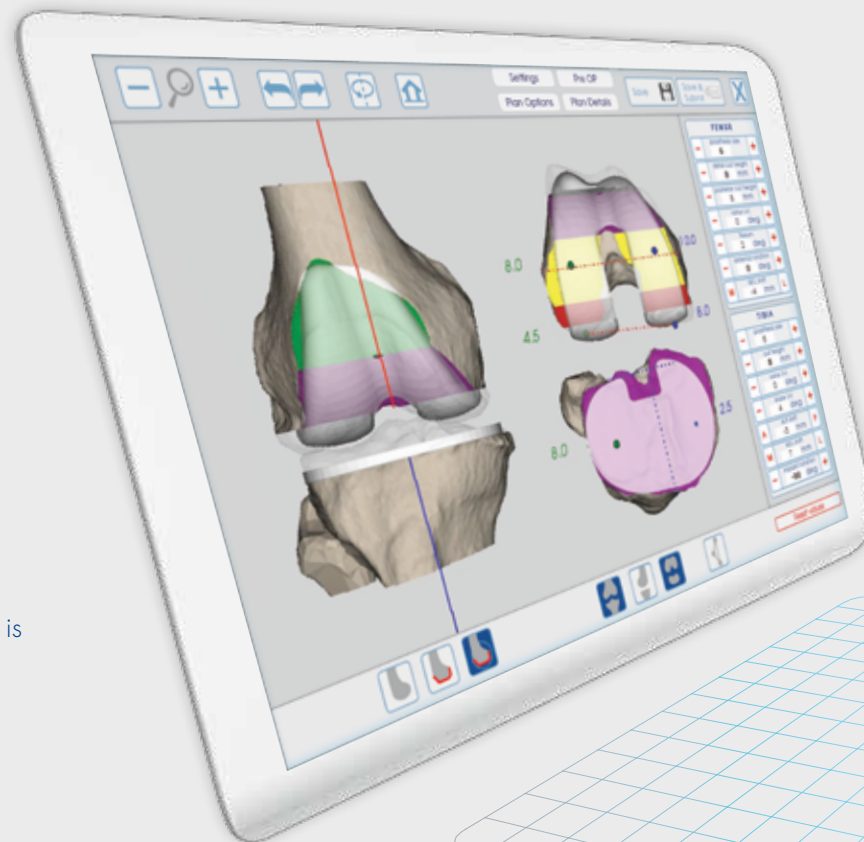
The bone resections are performed directly through the slots and all the checks can be done intraoperatively before pinning the cutting blocks.

### ■ CT OR MRI BASED

Freedom to choose the preferred imaging technology.

### ■ ONLINE CASE MANAGEMENT

The MyKnee® cases are managed entirely online, without the need of installing any software. The cases database is available to the surgeon at any time from everywhere and, moreover, the information on the website is always kept up-to-date.



### ■ COMPLETE IN HOUSE TECHNOLOGY

The MyKnee® process is entirely kept in house from the 3D anatomical reconstruction to the cutting blocks manufacturing, allowing a direct contact between the surgeon and his personal MyKnee® technician.

### ■ A PERSONAL MYKNEE® TECHNICIAN JUST FOR YOU

Each surgeon is assigned a MyKnee® technician who is his reference person for all questions and needs.

### ■ ONLY 3 WEEKS LEAD TIME

The shortest delivery time in today's market for this technology.

## UP TO 60% REDUCTION OF SURGICAL STEPS FOR BONE RESECTION AND RELATED TIME<sup>[13]</sup>

Only 3 surgical steps are needed using MyKnee® cutting guides: **fit – pin – cut**, saving more than 20 steps.

Having a smaller number of surgical steps may reduce the overall surgical time, **POTENTIALLY ADDING ONE EXTRA CASE PER SURGERY SESSION**.<sup>[8]</sup>

Moreover the patient may benefit:

- Less exposure to the risk of infection<sup>[15]</sup>
- Less time under anaesthesia
- Less tourniquet time

## UP TO 66% REDUCTION OF TIME AND COST IN WASHING, ASSEMBLING AND STERILIZATION PROCEDURES<sup>[10,16]</sup>



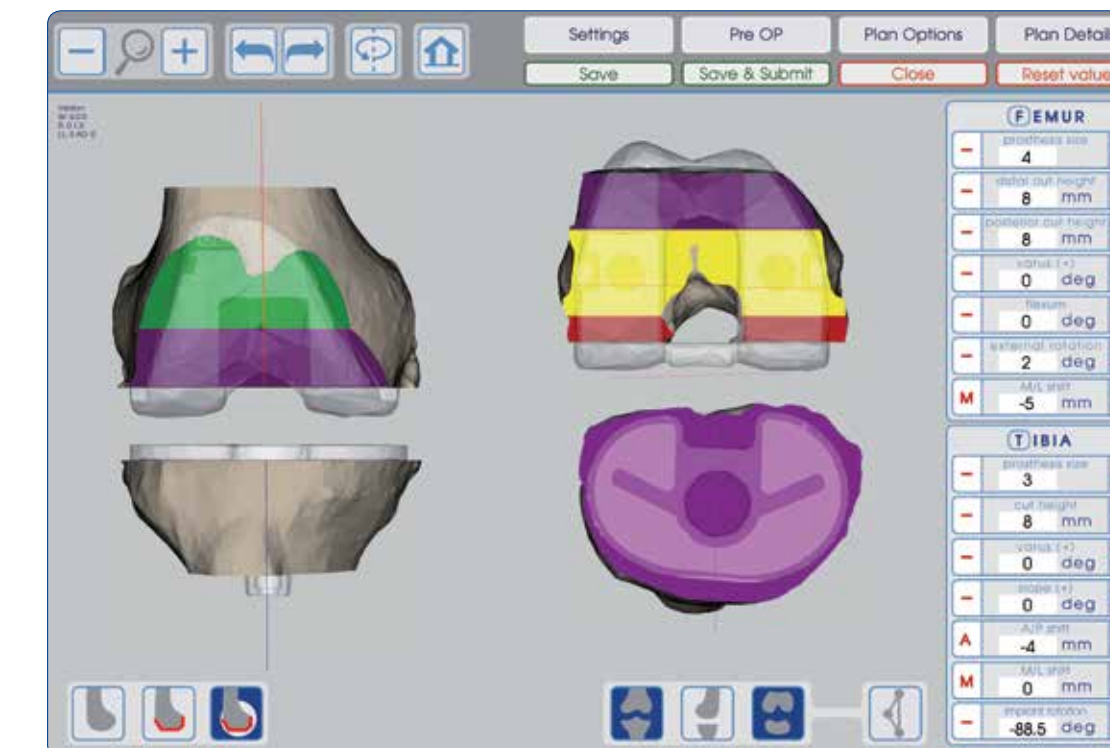
- Only 2 MyKnee® trays opened vs. 6 or more for a conventional TKR
- Specific implants ready in the operative room
- Less set-up time & turnover time
- Less risk of losing and damaging pieces
- Fewer cleaning requirements
- Improved overall operative room logistics and efficiency



## INTERACTIVE 3D WEB PLANNING

### DESIGNED BY YOU!

The MyKnee® preoperative planning is based on the surgeon's specific preferences and submitted to the surgeon for approval through an interactive website available at <https://myknee.medacta.com>.



The user interface may change without notice. The picture is only indicative and shows the information provided by the interactive website.

For every case the surgeon can modify all femur and tibia parameters such as:

- Femoral distal and anterior-posterior resection levels, femoral rotation, femoral flexion, femoral and tibial varus/valgus,
- Tibial resection level and tibial slope.

The MyKnee® team is always at surgeon's disposal and is pleased to collaborate.

Once approved by the surgeon, Medacta® produces MyKnee® cutting blocks using in house laser sintering technology. The guides are then shipped to be setup for surgery.

## REFERENCES

[1] Leon V. Patient matched technology vs conventional instrumentation and CAS, Poster at the 13th EFORT Congress, Berlin, May 23-25 2012. [2] Koch P, Müller D, Pisan M, Fucini S, Radiographic accuracy in TKA with CT-based patient-specific cutting block technique. *Knee Surg Sports Traumatol Arthrosc.* 2013 Oct;21(10):2200-5. [3] Dussault M, Goldberg T, Greenhow R, Hampton D, Parry S, Slimack M - Preoperative planning accuracy of MyKnee system. *M.O.R.E. Journal.* 2012 May; 2:22-25. [4] Müller D et al. CT based patient specific cutting blocks for total knee arthroplasty: technique and preliminary radiological results. *Podium Presentation at the 71st Annual Congress of the SSO, Lausanne, Switzerland, June 22-24, 2011.* [5] Goldberg T et al. CT-based Patient-Specific Instrumentation is Accurate for TKA: A Single-Surgeon Prospective Trial. *Bone Joint Journal.* vol. 95-B no. SUPP 34, 325, 2013. [6] Goldberg T et al. CT-based Patient-Specific Instrumentation is Effective in Patients With Pre-Existing Hardware about the Knee. *Bone Joint Journal.* vol. 95-B no. SUPP 34, 326, 2013. [7] Tring M, Helmy N et al. Improved positioning of the tibial component in unicompartmental knee arthroplasty with patient-specific cutting blocks. *Knee Surg Sports Traumatol Arthrosc.* 2014 Jan. Epub ahead of print. [8] Goldberg T - MyKnee economical and clinical results. *Podium Presentation at the 6th M.O.R.E International symposium, Stresa, Italy, May 13-14, 2011.* [9] Koch P - MyKnee System - A new vision in total knee replacement. *Leading Opinions - Orthopédie & Rhumatologie* 2, 2011; 32-35. [10] Gagnia G - Aspects économiques de la technologie sur mesure MyKnee en chirurgie prothétique du genou. *Podium Presentation at the SICOT Annual Meeting, Paris, November 11-14, 2012.* [11] Baldo F, Bonifant B - Patient-specific cutting blocks for total knee arthroplasty: preoperative planning reliability. *J Orthopaed Traumatol* 2011; 12 (Suppl 1): S23-S28. [12] Rhee MA, et al. Postoperative alignment of total knee replacement: its effect on survival. *Clin Orthop.* 1999; 299:153-156. [13] Kalraiah Y, et al. Blood loss after total knee replacement: effects of computer-assisted surgery. *JBS Br.* 2005 - Nov;8(711):1480-2. [14] Kalraiah Y, et al. Are systemic emboli reduced in computer-assisted knee surgery? A prospective, randomised, clinical trial. *JBS Br.* 2006 Feb;8(82):198-202. [15] Peersman G, et al. Prolonged Operative Time Correlates with Increased Infection Rate after Total Knee Arthroplasty. *Hospital for Special Surgery Journal* 2006-Feb;2(11):70-2. [16] Data on file: Medacta