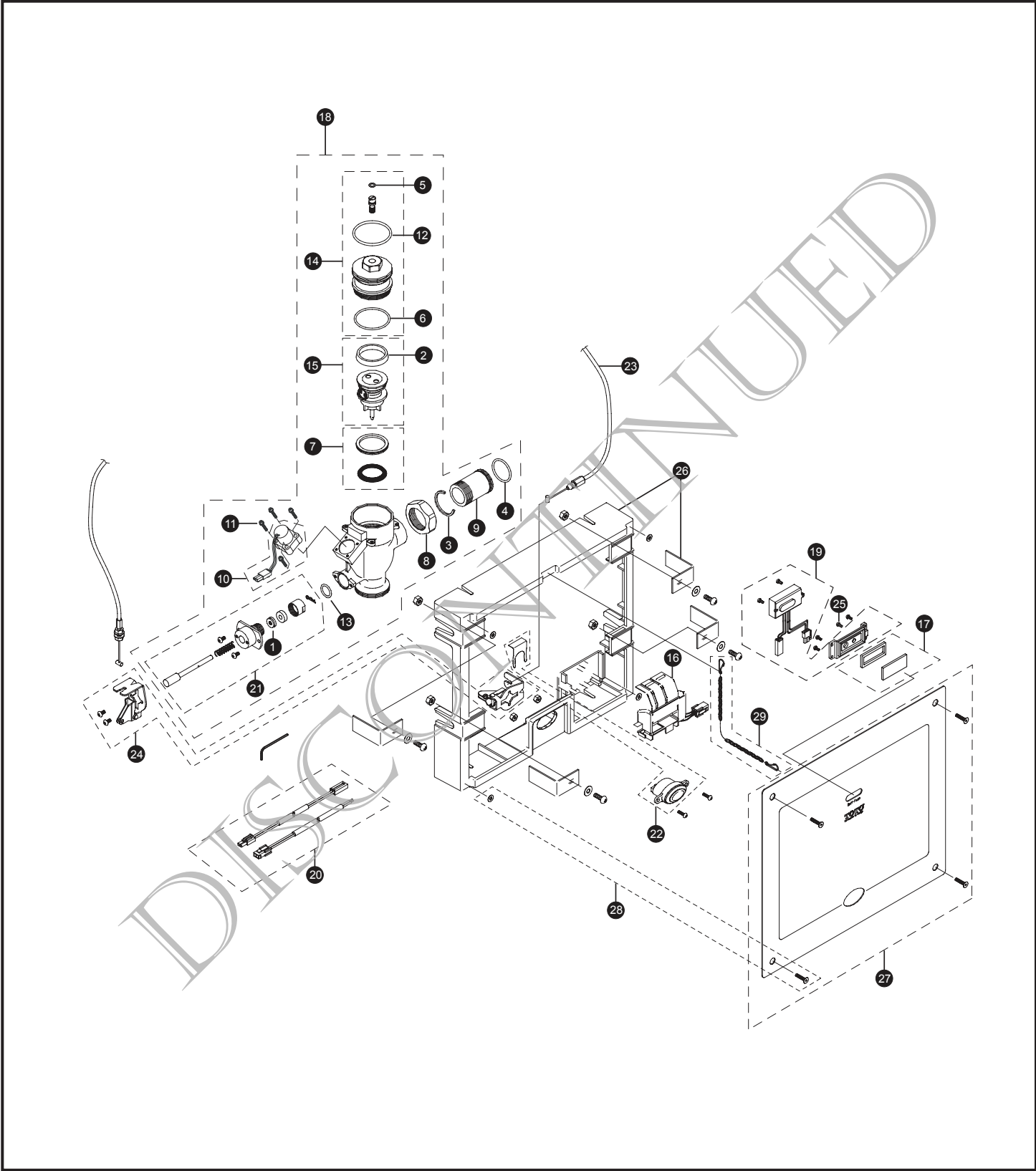


TET2DNS-31
TET2DNS-32
TET2DNS-33

**Sensor Toilet Flush Valve
Concealed (14" x 12") - 1.6 Gpf
Battery Powered (6V DC)**



TET2DNS-31
TET2DNS-32
TET2DNS-33

**Sensor Toilet Flush Valve
Concealed (14" x 12") - 1.6 Gpf
Battery Powered (6V DC)**

Item	Part	Description
1	TH302RV100	Gaskets (U-Packing) (x 10)
2	TH305SV103	U-Packing (For Piston) (x 10)
3	TH305SV105	Locking Rings (x 10)
4	TH305SV106	O-Rings (Tail Piece) (x 10)
5	TH305SV111	O-Rings (Cap Screw) (x 10)
6	TH305SV112	O-Rings (Valve Guide) (x 10)
7	TH321	Seal Washer Kit
8	TH305SV113	Nut
9	TH305SV114	Tail Piece
10	TH559EDV300	Solenoid Unit & Diaphragm Assembly
11	TH559EDV301	Double Sems Screws M3 (x 4)
12	TH559EDV302	O-Ring (Valve Cap)
13	TH559EDV303	O-Ring (Push Rod)
14	TH559EDV304	Valve Cap Assembly - Toilet
15	TH559EDV306R	Piston Assembly (1.6 GPF)
16	TH559EDV308	Battery Case - DC
17	TH559EDV327	Glass & Packing Set
18	TH559EDV328	Valve Body for Concealed (Toilet 1.6 GPF)
19	TH559EDV330	Sensor Controller - DC Toilet
20	TH559EDV334	Wire Set (DC Type)
21	TH559EDVL10	Push Button Assembly replaces TH559EDV336
22	TH559EDV337	Push Button & Clip Set
23	TH559EDV338	Wire Cable
24	TH559EDV339	Bracket Set
25	TH559EDV361	Screw Set 4-40UNC
26	TH559EDV341	Wall Frame
27	TH559EDV342	Front Panel (Toilet)
28	TH559EDV344	Hex Socket Flat Head Cap Screw Set
29	TH559EDV345	Chain Set

Vacuum Breaker Sets

- VB13RB-31 Concealed - Back Spud (1-1/2" Outlet)
- VB9RB-32 Concealed - Top Spud (1-1/2" Outlet)
- VB13RB-33 Concealed - Back Spud Floor Mount (1-1/2" Outlet)

Note: For additional information, refer to the individual vacuum breaker parts sheets.

Product Number Explanations

Flush Valve	Flush Valve	Flush Valve
(T) Fitting	(T) Fitting	(T) Fitting
(E) Electronic	(E) Electronic	(E) Electronic
(T) Toilet 1.6	(T) Toilet 1.6	(T) Toilet 1.6
(2) Concealed Large Plate	(2) Concealed Large Plate	(2) Concealed Large Plate
(D) DC Battery	(D) DC Battery	(D) DC Battery
(N) Neutral Rough-In	(N) Neutral Rough-In	(N) Neutral Rough-In
(S) Stainless Finish	(S) Stainless Finish	(S) Stainless Finish
(3) 1-1/2" Outlet	(3) 1-1/2" Outlet	(3) 1-1/2" Outlet
(1) Back Spud Wall	(2) Top Spud	(3) Back Spud Floor Mount