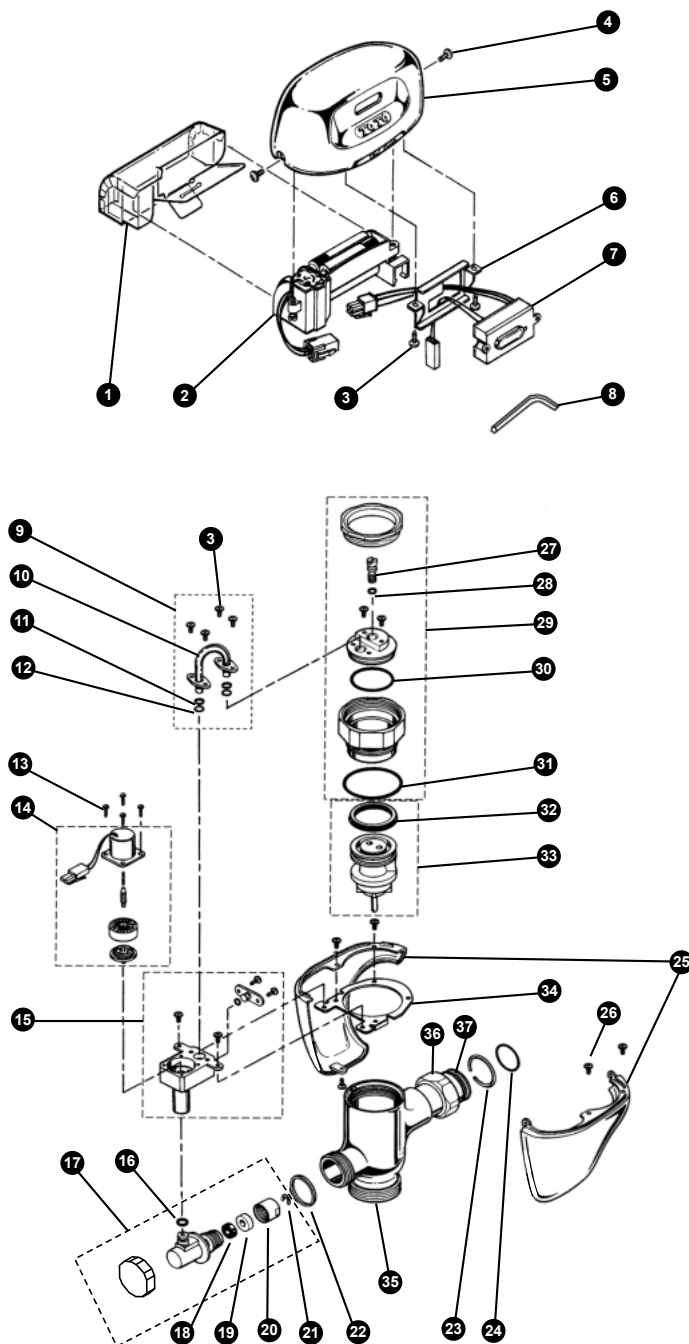


TEU1DNC
TEU1DNC-12
TEU1DNC-22

**Sensor Urinal Flush Valve, Exposed - 1.0 GPF
Battery Powered (6V, DC)**



Reliance Commercial Line

TEU1DNC Series

TEU1DNC
TEU1DNC-12
TEU1DNC-22

Sensor Urinal Flush Valve, Exposed - 1.0 GPF Battery Powered (6V, DC)

No.	Part Number	Description	Qty		No.	Part Number	Description	Qty
1	H660101	Battery Case Cover	1	Obsolete	35	R11149W-1	Valve Body (EFV) - No Logo	1
2	TH559EDV352	Battery Case Assembly	1		36	TH305SV113	Nut	1
3	H660301	Phillips Pan Head Screws (430 SS)	20		37	TH305SV114	Tail Piece	1
4	H660401	Hex Socket Cap Screws (304 SS)	10		Note: Allen Wrench 3/32" is for reference purposes only. H660301 Phillips Pan Head Screws are 8-32 UNC x 1/4". H660401 Hex Socket Cap Screws are 8-32 UNC x 3/8". Order H660501 until depleted, then order TH559EDV351.			
5	H660501	Top Cover (DC Type)	1					
6	H660601	Sensor Bracket Set	1					
7	VCA9A	Sensor Controller - DC Urinal 1.0 GPF	1					
8	3/32"	Allen Wrench	1	Reference	Vacuum Breaker Sets			
9	H660701	Copper Tube Sub-Assembly w/Packing	1		VB9CP-12	Exposed - Top Spud (3/4" Outlet)	1	
10	H662301	Copper Tube	1		VB9CP-22	Exposed - Top Spud (1-1/4" Outlet)	1	
11	H660801	Back-Up Rings	10		Note: For additional information, refer to the individual vacuum breaker parts sheets. TOTO urinals UT104, UT370 and UT447 have 3/4" Top Spud Inlets.			
12	H660901	O-Rings (Tube Assembly)	10					
13	H661001	Double Sems Screws #4-40	10					
14	VCA503A	Solenoid Unit & Diaphragm Assembly	1					
15	H661101	Solenoid Valve Seat Assembly	1					
16	H661201	O-Rings (Plunger Guide)	10					
17	H661401	Push Button Assembly (For Urinal)	1					
18	TH302RV100	Gaskets (U-Packing)	10					
19	R91112MZ	Guide Rings	10					
20	R23024MZ	Guide Ring Stoppers	10					
21	H661601	E-Rings	10					
22	H661701	Gaskets (Plunger Guide)	10					
23	TH305SV105	Locking Rings	10					
24	TH305SV106	O-Rings (Tail Piece)	10					
25	TH559EDV321	Lower Urinal Cover Set	1					
26	TH559EDV325	Screw Set 8-32 UNC	10					
27	R31057MZ	Cap Adjustment Screws	10					
28	TH305SV111	O-Rings (Cap Screw)	10					
29	H662001	Valve Cap Assembly	1					
30	H662101	O-Rings (Valve Cap)	10					
31	TH305SV112	O-Rings (Valve Guide)	10					
32	R81019-1MZ	U-Packing (For Piston)	10					
33	R15186W	Piston Assembly (1.0GPF & 3.5GPF)	1					
34	H662201	Plate	1					

Model Explanation

T - Fitting	T - Fitting
E - Electronic	E - Electronic
U - Urinal 1.0	U - Urinal 1.0
1 - Exposed	1 - Exposed
D - DC Battery	D - DC Battery
N - Neutral Rough-In	N - Neutral Rough-In
C - Chrome Finish	C - Chrome Finish
1 - 3/4" Outlet	2 - 1-1/4" Outlet
2 - Top Spud	2 - Top Spud