

# BC35-G&BC28

# UEMonitor User Guide

**NB-IoT Module Series**

Rev. BC35-G&BC28\_UEMonitor\_User\_Guide\_V1.0

Date: 2017-12-14

Status: Released



**Our aim is to provide customers with timely and comprehensive service. For any assistance, please contact our company headquarters:**

**Quectel Wireless Solutions Co., Ltd.**

7<sup>th</sup> Floor, Hongye Building, No.1801 Hongmei Road, Xuhui District, Shanghai 200233, China

Tel: +86 21 5108 6236

Email: [info@quectel.com](mailto:info@quectel.com)

**Or our local office. For more information, please visit:**

<http://quectel.com/support/sales.htm>

**For technical support, or to report documentation errors, please visit:**

<http://quectel.com/support/technical.htm>

Or Email to: [support@quectel.com](mailto:support@quectel.com)

**GENERAL NOTES**

QUECTEL OFFERS THE INFORMATION AS A SERVICE TO ITS CUSTOMERS. THE INFORMATION PROVIDED IS BASED UPON CUSTOMERS' REQUIREMENTS. QUECTEL MAKES EVERY EFFORT TO ENSURE THE QUALITY OF THE INFORMATION IT MAKES AVAILABLE. QUECTEL DOES NOT MAKE ANY WARRANTY AS TO THE INFORMATION CONTAINED HEREIN, AND DOES NOT ACCEPT ANY LIABILITY FOR ANY INJURY, LOSS OR DAMAGE OF ANY KIND INCURRED BY USE OF OR RELIANCE UPON THE INFORMATION. ALL INFORMATION SUPPLIED HEREIN IS SUBJECT TO CHANGE WITHOUT PRIOR NOTICE.

**COPYRIGHT**

THE INFORMATION CONTAINED HERE IS PROPRIETARY TECHNICAL INFORMATION OF QUECTEL WIRELESS SOLUTIONS CO., LTD. TRANSMITTING, REPRODUCTION, DISSEMINATION AND EDITING OF THIS DOCUMENT AS WELL AS UTILIZATION OF THE CONTENT ARE FORBIDDEN WITHOUT PERMISSION. OFFENDERS WILL BE HELD LIABLE FOR PAYMENT OF DAMAGES. ALL RIGHTS ARE RESERVED IN THE EVENT OF A PATENT GRANT OR REGISTRATION OF A UTILITY MODEL OR DESIGN.

***Copyright © Quectel Wireless Solutions Co., Ltd. 2017. All rights reserved.***

# About the Document

## History

Revision	Date	Author	Description
1.0	2017-12-14	Donald TANG	Initial

---

## Contents

About the Document .....	2
Contents .....	3
Figure Index .....	4
<b>1 Introduction .....</b>	<b>5</b>
<b>2 Tool Installation.....</b>	<b>6</b>
2.1. Microsoft .NET Framework Installation .....	6
2.2. UEMonitor Installation .....	8
<b>3 View Logs .....</b>	<b>10</b>

## Figure Index

FIGURE 1: MICROSOFT .NET FRAMEWORK INSTALLATION PACKAGE .....	6
FIGURE 2: LICENSE AGREEMENT FOR MICROSOFT .NET FRAMEWORK INSTALLATION .....	6
FIGURE 3: MICROSOFT .NET FRAMEWORK IS INSTALLING .....	7
FIGURE 4: MICROSOFT .NET FRAMEWORK SUCCESSFULLY INSTALLED .....	7
FIGURE 5: UEMONITOR SETUP INTERFACE .....	8
FIGURE 6: INSTALLING UEMONITOR .....	8
FIGURE 7: INSTALLATION COMPLETED .....	9
FIGURE 8: UEMONITOR DESKTOP ICON .....	9
FIGURE 9: MAIN INTERFACE OF UEMONITOR.....	10
FIGURE 10: CREATE A NEW PROJECT .....	10
FIGURE 11: SELECT DEBUG PORT AND FIRMWARE PACKAGE .....	11
FIGURE 12: LOG INFORMATION AND PROJECT NAME AFTER CONNECTION.....	11

# 1 Introduction

This document mainly introduces how to use UEMonitor tool to view logs via debug port for Quectel BC35-G and BC28 modules on Window 7 system.

## 2 Tool Installation

Customers need to install “Microsoft .NET Framework” (4.5.2 version or later) on PC before installing the UEMonitor.

### 2.1. Microsoft .NET Framework Installation

1. Double-click *microsoft.net framework 4.5.2.exe* to install Microsoft .NET Framework.

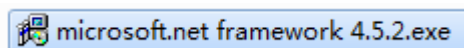


Figure 1: Microsoft .NET Framework Installation Package

2. Wait until the following window comes up, and then click “**I have read and accept the license terms**” and “**Install**” as shown below.

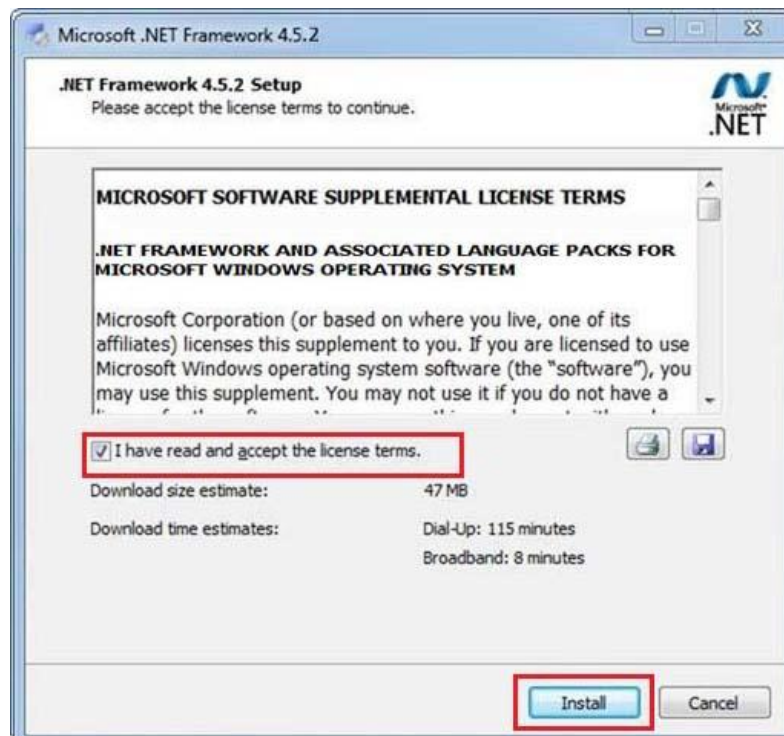


Figure 2: License Agreement for Microsoft .NET Framework Installation

- Please wait for the program to install.

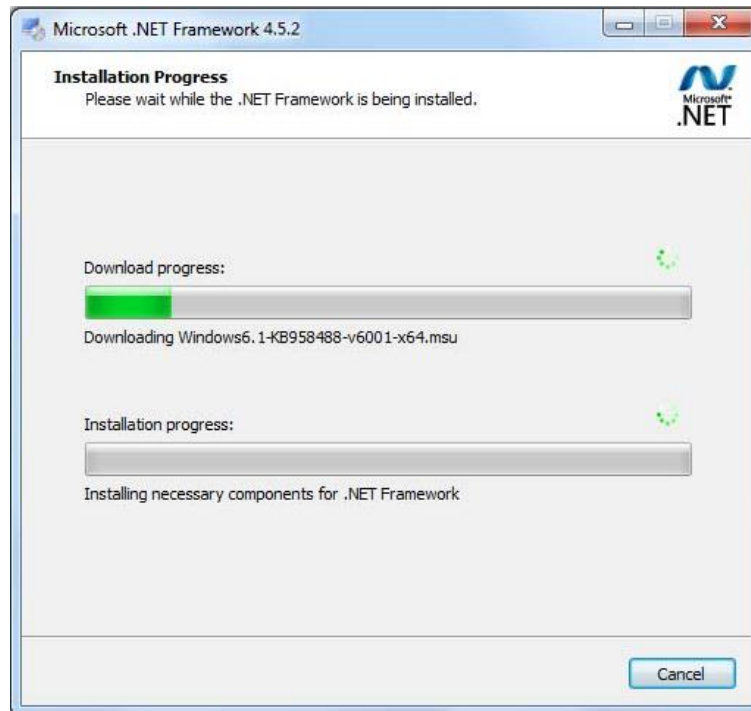


Figure 3: Microsoft .NET Framework is Installing

- Click “**Finish**” to accomplish installation.

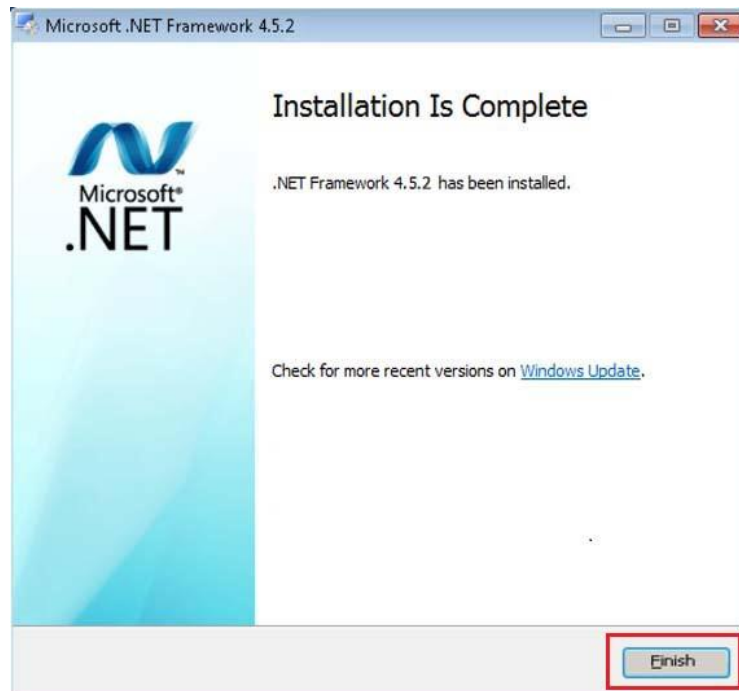


Figure 4: Microsoft .NET Framework Successfully Installed



## 2.2. UEMonitor Installation

**Step 1:** Double-click the installation package, and then the installation interface shown as below will pop up. Click “**Next**” and wait during the installation.

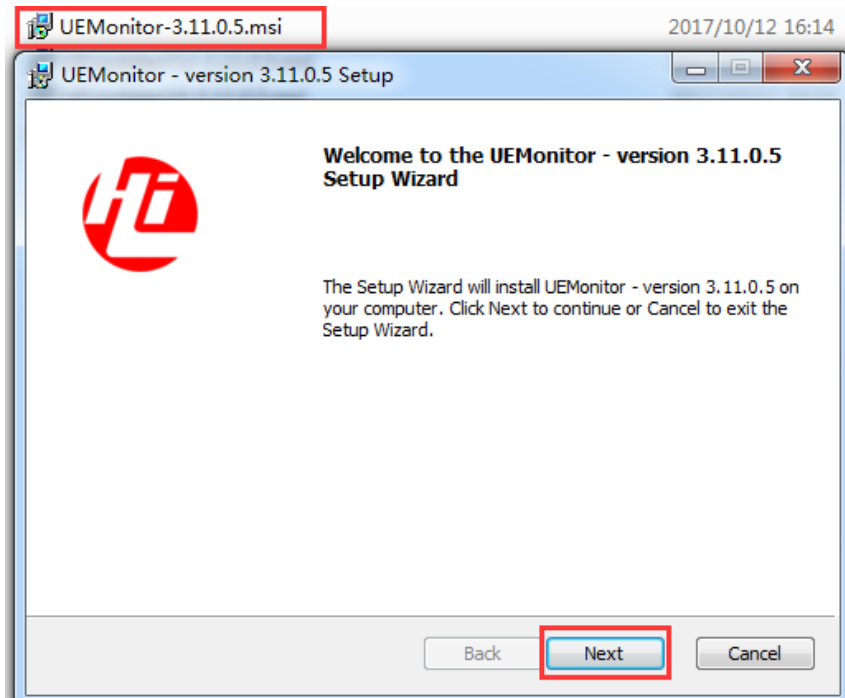


Figure 5: UEMonitor Setup Interface

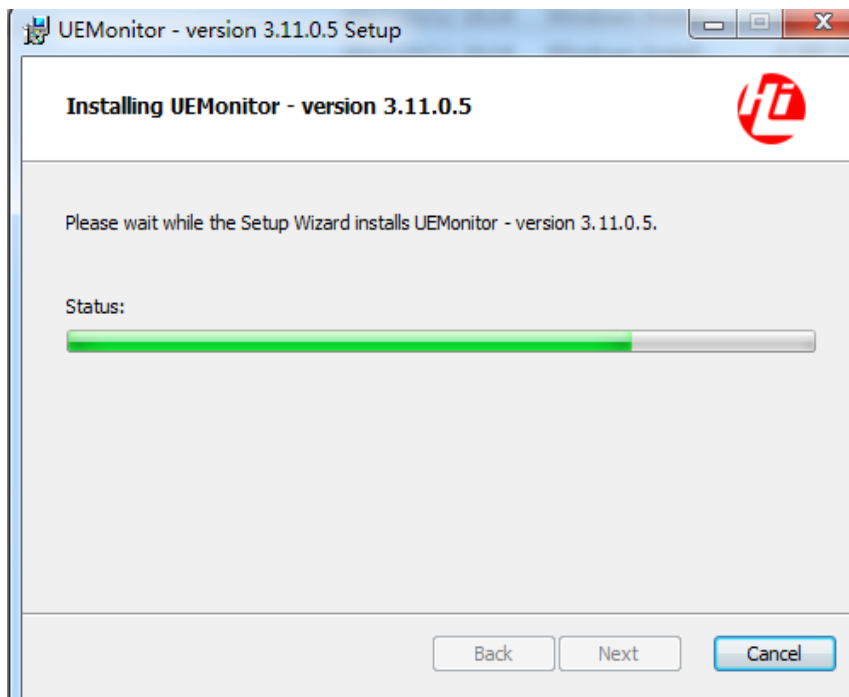
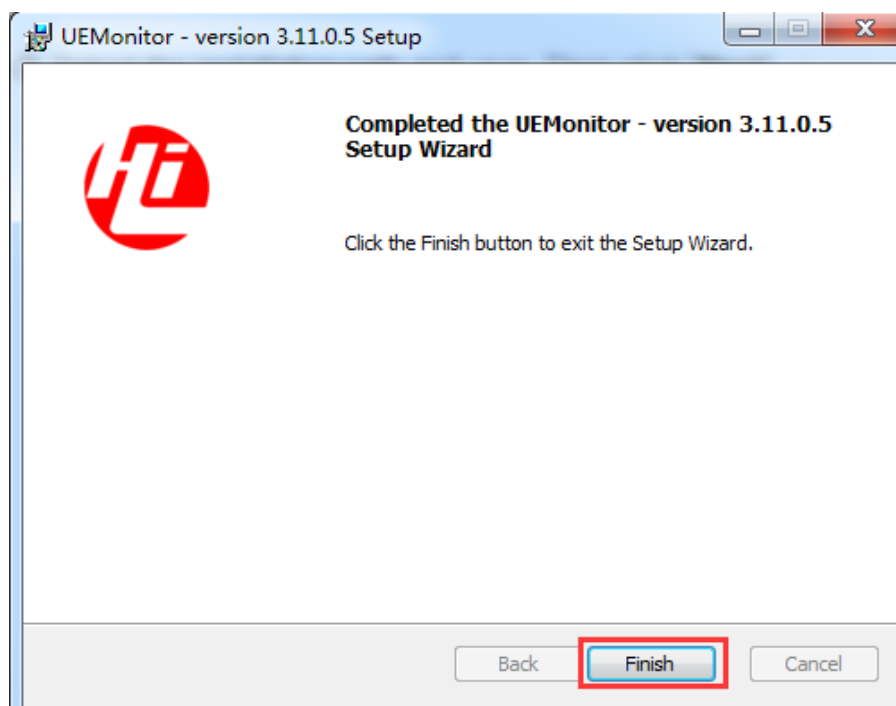


Figure 6: Installing UEMonitor

**Step 2:** Click “Finish” to finish the installation.



**Figure 7: Installation Completed**

**Step 3:** After installation, the following icon will be shown on the desktop.



**Figure 8: UEMonitor Desktop Icon**

## 3 View Logs

This chapter mainly introduces how to use the UEMonitor tool to view logs.

**Step 1:** Open the tool, and then the main interface will be shown as below.

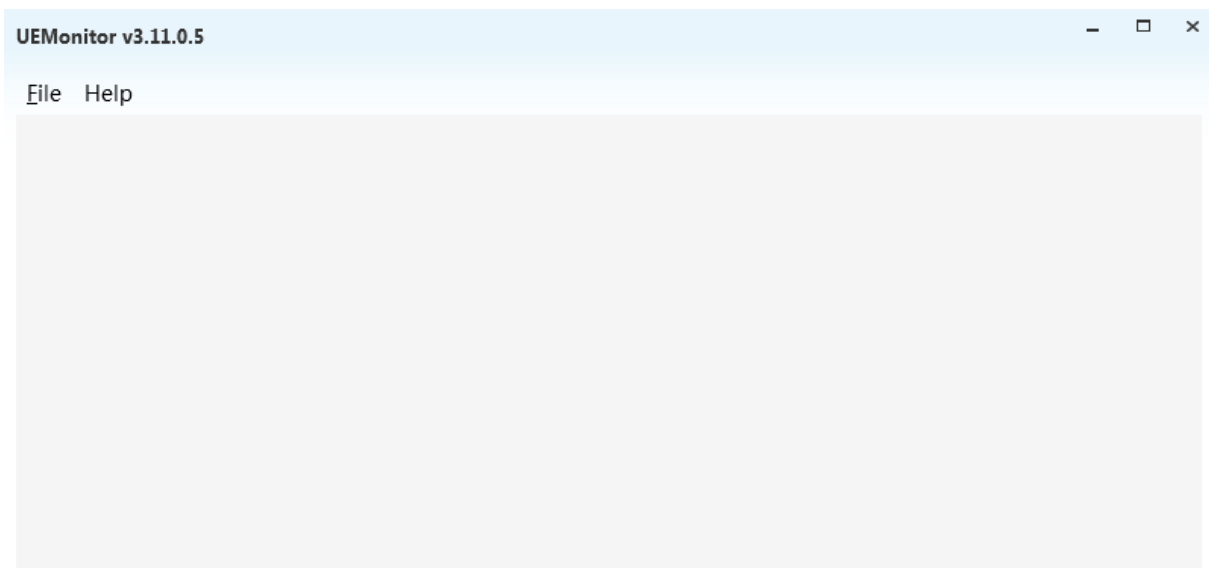


Figure 9: Main Interface of UEMonitor

**Step 2:** Create a new project by clicking “**New Project**” in the drop-down list of “**File**”.

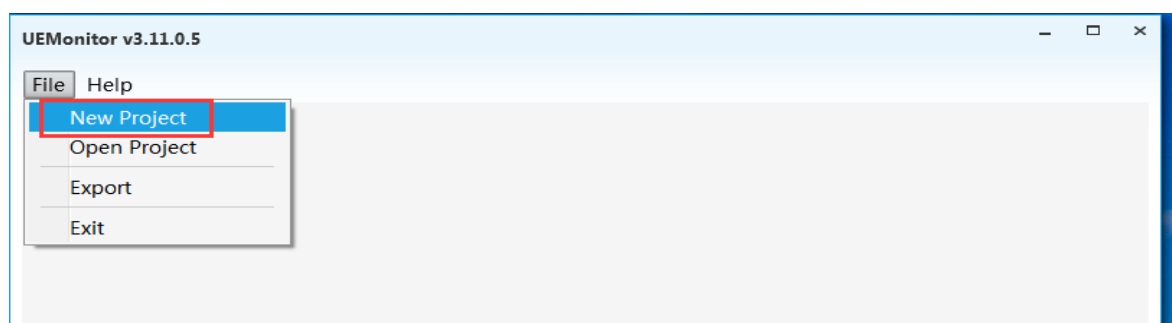
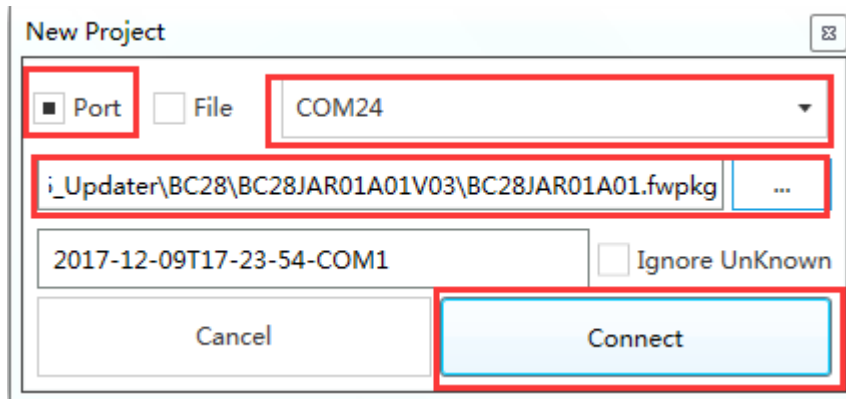


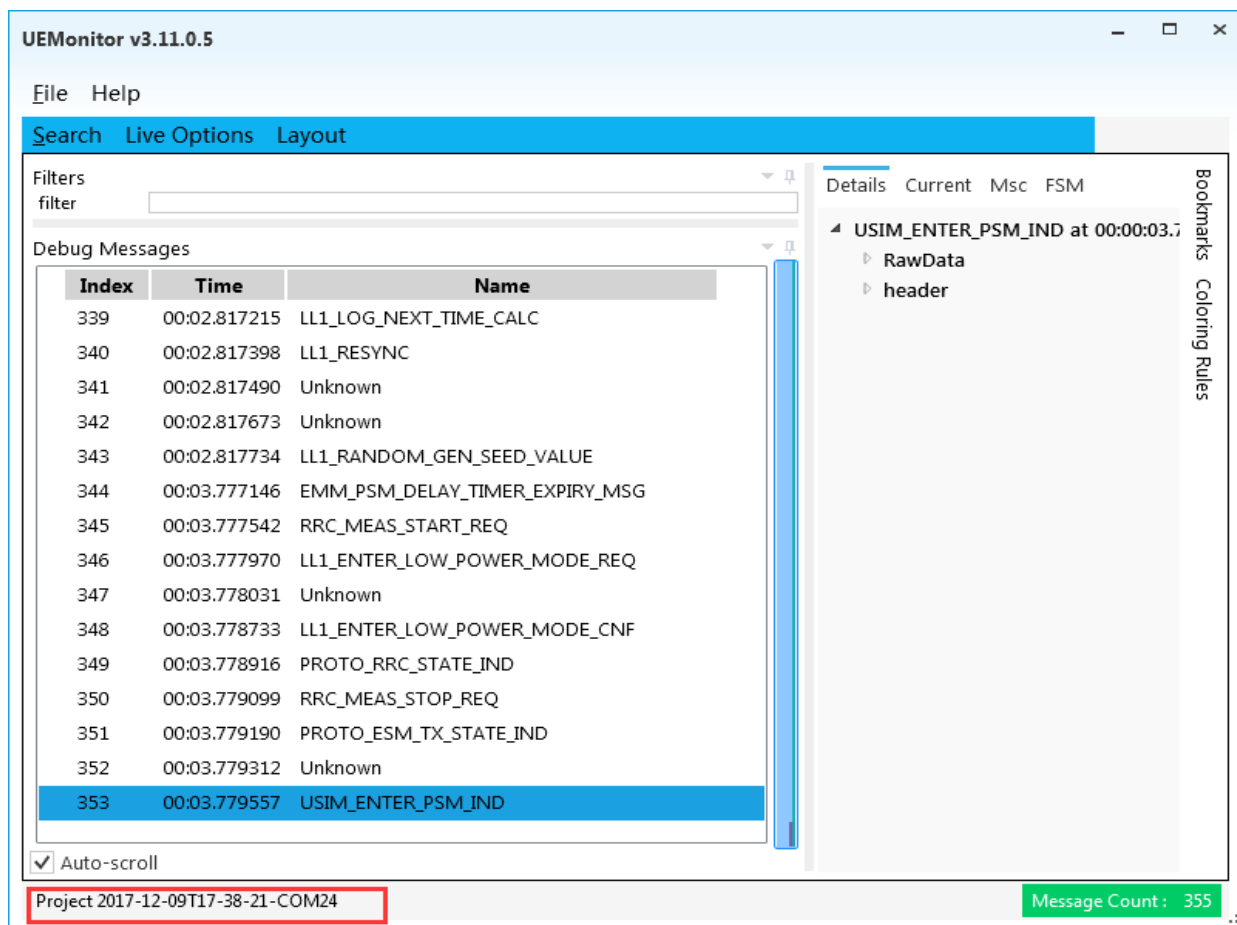
Figure 10: Create a New Project

**Step 3:** Select the debug port and firmware package file in *.fwpkg* format (or *message.xml* file).



**Figure 11: Select Debug Port and Firmware Package**

**Step 4:** Click “**Connect**”, and the log information can be viewed from the interface. The logs will be automatically saved into “*C:\Users\xxx\Documents\UEMonitor\Projects*” path. Please note that the module should be powered on before connection.



**Figure 12: Log Information and Project Name after Connection**