



Clemas & Co Ltd

Industrial Cleaning Equipment
Sales - Hire - Service

R48 SCARIFIER OPERATOR AND PARTS MANUAL



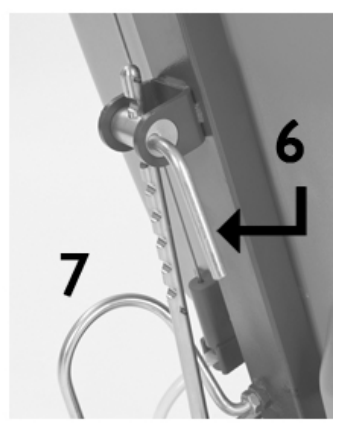
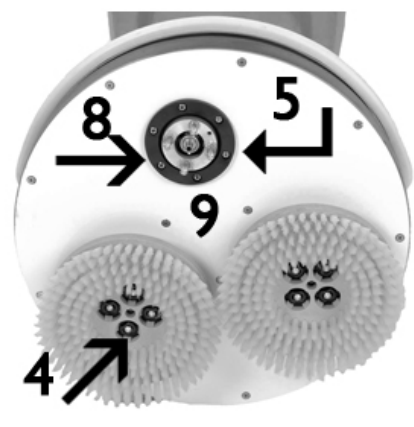
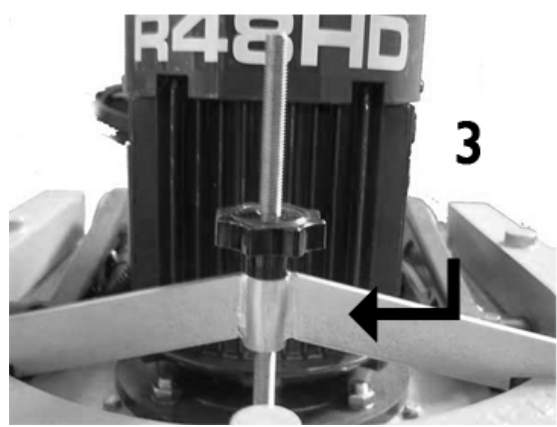
Clemas & Co. Unit 5 Ashchurch Business Centre, Alexandra Way, Tewkesbury,
Gloucestershire, GL20 8NB.

Tel: 01684 850777

Fax: 01684 850707

Email: info@clemas.co.uk

Web: www.clemas.co.uk



ORIGINAL INSTRUCTIONS

WARNING - READ THESE INSTRUCTIONS BEFORE USING THE MACHINE & RETAIN FOR FUTURE REFERENCE

CIMEX HD

The following manual contains important information about the machine and safety advice for the operator.



WARNING



Earth Ground Symbol



Waste Electrical & Electronic Equipment (WEEE)

Do not dispose of this device with unsorted waste. Improper disposal may be harmful to the environment and human health. Please refer to your local waste authority for information on return and collection systems in your area.

EC DECLARATION OF CONFORMITY

Machine Type: Heavy duty scarifier

Type: Cimex HD

Model: R48HD

This machine is in conformity with the following EU directives:

2006/42/EC

Machinery Directive

2004/108/EC

The EMC Directive

Applied harmonised standards

EN60335-1, EN60335-2-67,
EN55014-1, EN55014-2,
EN610003-2, EN610003-3,
EN62233

Truvox International
Unit C (East) Hamilton
Business Park, Manaton
Way, Botley Road, Hedge
End, Southampton,
SO30 2JR, England

CE *M. Eneas.*
Malcolm Eneas
Operations Manager

Southampton, 30-04-2004

TECHNICAL SPECIFICATIONS

Model		Cimex Heavy Duty 48
Product Code		R48HD
Motor power (single phase/ three phase)	W	1500/ 2200
Productivity rate	m ² /h	600
Pad/brush speed	rpm	400
Pad/brush diameter	cm	48
Productivity - Scrubbing	m ² /h	1140
Productivity - Polishing	m ² /h	1710
Productivity - Spray clean	m ² /h	850
Dimensions (L x W x H)	cm	75 x 55 x 120
Weight	kg	60
Ballast weights	kg	17
No. units supplied		2
Cable length	m	15
Warranty		1 year

- Machine is of Class I construction. Enclosure to IPX2.
- Models - 230 V ~ 50 Hz. fitted with 15m supply cord type H05VV-F 3x1.0mm² (10A), and plug.
- Sound pressure levels measured at a distance of 1 metre from machine and 1.6 metres above floor, when scrubbing a hard floor. Measurements recorded using a hand held meter.
- Handle vibration does not exceed 2.5m/s², when operating on any surface with brush or pads. Measurements recorded by an independent test laboratory.

If you have any queries or questions, please contact the supplier who you purchased the machine from or Truvox International.

Truvox International Limited

Unit C (East) Hamilton Business Park, Manaton Way, Botley Road, Hedge End, Southampton, SO30 2JR, United Kingdom; Tel.: +44 (0) 23 8070 6600; Fax: +44 (0) 23 8070 5001; Email: sales@truvox.com; Web: www.truvox.com

Please refer to machine pictures on page 1

- | | |
|---|---|
| 1 Motor switch lever
When raised switches motor ON and starts the rotating heads, when released switches motor OFF and stops the heads. Each time the lever is operated the direction of head rotation is reversed, improving the quality of cleaning and prolonging disc/pad life. | 6 Handle adjustment lever
From the upright position, lift the handle adjustment lever and pull the handle backwards to a comfortable working height, then press lever down to lock handle in position |
| 2 Handle | 7 Cable hooks
Used to hold supply cord in place on handle when machines not in use |
| 3 Clamping bar | 8 Drive plates
Attachment point for brushes or drive discs and pads |
| 4 Drive pins | 9 Rotating dust cover |
| 5 Rotating heads | |

- **CAUTION** - This machine is for dry indoor use only and should not be used or stored outdoors in wet conditions.
- All parts are to be positioned as indicated in the instructions before using the machine.
- The machine must be unpacked and assembled in accordance with these instructions before connecting to the electrical supply.
- **DO NOT** use where hazardous dust is present.
- **DO NOT** use in an explosive atmosphere.
- **DO NOT** pick up or use near flammable fluids, dusts or vapours.
- **DO NOT** use to clean up any burning or lighted materials such as cigarettes, matches, ashes or other combustible objects.
- Take care when using a machine near the top of stairs to avoid overbalancing.
- Only use the machine on firm level surfaces. **DO NOT** use on a gradient or more than 2% slopes.
- **DO NOT** use diesel/petrol or corrosive detergents to wash floors.
- **DO NOT** wash and vacuum corrosive, flammable and/or explosive liquids, even if diluted.
- **DO NOT** put any object into openings. **DO NOT** use with any opening blocked; keep free of dust, debris and anything that may reduce airflow.
- **DO NOT** cover machine when in use.
- **DO NOT** leave the machine connected to the electricity supply when not in use; always remove the plug from the socket outlet.
- **DO NOT** leave machine running unattended.
- This machine should always be connected to a fully earthed power supply of the right voltage and frequency.
- The machine shall be disconnected from its power source during its cleaning or maintenance and when replacing parts or accessories, by removing the plug from the socket-outlet.
- **DO NOT** use if it has been damaged, left outdoors or dropped into water.
- **DO NOT** operate switches or touch the mains plug with wet hands as this may cause electric shock.
- **WARNING** - Keep the power supply cord clear of moving parts (and/or rotating brushes). During operation hazard may occur when running the machine over the power supply cord.
- **DO NOT** operate the machine with a damaged supply cord or plug, or after the machine malfunctions or is damaged in any way. Contact an authorised Service Agent for repair or adjustment.
- **DO NOT** pull or carry by the supply cord. **DO NOT** use cord as a handle, close door on cord or pull cord around sharp edges or corners.
- The plug of the power supply cord must be removed from the socket-outlet before commencing cleaning of the machine or undertaking maintenance operations.
- **DO NOT** kink or twist the power cord and keep cord away from heated surfaces. □
- When unplugging, pull the plug, not the supply cord.
- The power supply cord must be regularly inspected for signs of damage. If the power supply cord is damaged, it shall only be replaced by a suitable cord by the

1. Product information

This heavy duty three brush floor cleaning machine is suitable for heavy duty commercial use. Ideal for floor preparation; removing impacted grease, oil and debris from concrete floors; removing build-up of ice in cold store floors; and glue, carpet backing foam and rubber removal. The machine is intended for commercial use, for example in hotels, schools, hospitals, factories, shops, offices, rental businesses and other than normal housekeeping purposes.

The following instructions contain important information about the machines and safety advice for the operator. These instructions are valid for the following models:

Cimex HD - R48HD...

Equipment must be operated, serviced and maintained in accordance with the manufacturer's instructions. If in doubt contact the supplier of your machine.



1.1 Important safety advice

When using this machine, basic safety precautions should be followed, including the following:

- This machine must only be used for the manufacturer's approved application as described in this manual.
- Please note that the safety information described in the manual supplements and does not replace standards in force in the country in which the machine is used.
- **WARNING** - Only use accessories and spare parts provided with the machine or those approved by the manufacturer. The use of other spare parts or accessories may impair the safety of the machine.

manufacturer, its service agent or a similar qualified person in order to avoid a hazard.

- Never use excessive foaming or highly corrosive cleaning solutions.

1.2 Guidelines for the operator

- This machine is not intended for use by persons (including children) with reduced physical, sensory or mental capabilities, or lack of experience and knowledge, unless they have been given supervision or instruction concerning use of the machine by a person responsible for their safety.
- Operators must be fully trained in the use of the machine in accordance with these instructions, able to perform user maintenance and the correct selection of accessories.
- Operators should be physically capable to manoeuvre, transport and operate the machines.
- Operators should be able to recognise unusual operation of the machine and report any problems.
- Keep children and unauthorised persons away from the machine when in use.
- Keep cleaning solutions away from children and pets at all times.
- **CAUTION** - This machine is for dry indoor use only and should not be used or stored outdoors in wet conditions.
- **DO NOT** clean the machine using water sprays or jets.
- Keep hair, loose clothing, hands, feet and all other parts of the body away from openings and moving parts.
- Keep machine clean and in good operating condition.
- Let the machine do the work. Grip the handle as lightly as possible.
- Stand with feet slightly apart to maintain good balance. Avoid twisting the body more than 45 degrees.
- Wear suitable footwear to avoid slipping.
- Wear suitable clothing to keep dry and warm.
- Where possible implement job rotation and adequate rest periods to avoid continuous use of the same muscles.
- **DO NOT** smoke when using the machine.

1.3 Transporting the machine

CAUTION - THIS MACHINE IS HEAVY

Do not attempt to lift the machine without assistance. Incorrect lifting techniques may result in personal injury. We advise that the manual handling regulations are followed. Please refer to the technical table for details on weight of machine. **CAUTION** – When lifting the machine the brush head is free to tip backwards, ensure fingers are kept well clear of the side arms of the chassis. The machine can be moved to the area to be cleaned by wheeling on its rear transport wheels. When transporting the machine ensure that all components, tanks and removable parts are securely fastened. Detach hose and wand from machine where applicable. When moving the machine the handle should be locked and the machine tilted back on its wheels. Do not lift or transport the machine whilst containing liquid as this will add considerably to the weight. Take extreme care when moving the machine up or down steps or stairs.

CAUTION – Bumping over thresholds, kerbs and similar obstacles can damage the machine. Small obstacles can be overcome by pulling the machine backwards.

2. Preparing for use

2.1 Electrical connection

Before connecting the machine to the power supply, check that your supply voltage corresponds with that marked on the rating label on the machine.

UK only

The supply cord for 230v models is fitted with a plug containing a 13 amp fuse. Should the fuse require replacement it must only be replaced by a 13 amp fuse conforming to BS1362, and the fuse cover must be refitted. If the fuse cover is lost the plug must not be used until the correct replacement cover is fitted.

Should an extension cord be used, ensure cord rating is adequate for the equipment. Do not use extension cord in coiled condition as this could result in overheating of the cord. The power supply cord plus any extension leads should not exceed 30 m in total. The cross-section of any extension cable wiring must be at least 2, 5 mm².

WARNING – THIS APPLIANCE MUST BE EARTHED.

2.2 Fitting brushes and pads

- **WARNING** - This appliance has been designed for use with the brushes specified by the manufacturer. The use of other brushes may impair safety.
- Always ensure machine is unplugged before fitting or removing parts.
- Tip the brush head backwards towards the handle, and push 3 brushes of the same type, or drive discs and pads, onto the four drive pins (4) on each of the rotating heads (5).
- Return brush head to the floor.
- Remove brushes by simply pulling them off the drive pins.
- **IMPORTANT** - Never allow the brush head to rest on the drive pins, always tip brush head back when not in use.
- Always keep brushes and pads in sets of three, to ensure even wear in order to prevent vibration.

2.3 Fitting scarifying brushes

- Tip the machine brush head backwards towards the handle, and push 3 scarifying brushes of the same type onto the four drive pins on each of the rotating heads (5).
- Fit retaining clip onto pins, ensuring it is located in the groove on each pin (4).
- Return brush head to the floor.
- Remove brushes by simply removing retaining clip and pulling brush off the drive pins.

2.4 Fitting heavy duty tools

- Heavy duty tools (such as star-wheels carbide blocks and scrapers) must be bolted onto the machine.
- To bolt tool to machine two drive pins (diagonally opposite each other) must be removed from each of the rotating heads.
- Fit three matching heavy duty tools over each pair of drive pins.
- Secure each tool using two M5 bolts. Always use spring washers with bolts to minimise chance of tools working loose. **IMPORTANT** – regularly check that bolts are tight.

2.5 Adjusting the handle height

Select the most comfortable handle height using the adjustment lever and lock in position.

2.6 Adding weights

- Before adding additional weights switch off the machine.
- Unscrew knob and lift off clamping bar (4).
- Add additional weight as required, and refit clamping bar.

3. Controls

The operating controls are located on the handle (1). Please refer to page 1.

4. Operation

4.1 Starting the machine

- Fully unwind the supply cord from the handle and plug in to a convenient socket outlet.
- With the handle set at a comfortable working height, and with both hands on the handle, lift the start/stop lever to START the machine. Releasing the lever will STOP the machine.
- **WARNING** - Never start the machine without brushes or heavy duty tools fitted.
- Normal movement of the machine is in a forward and backward direction.
- Always work away from the supply socket to avoid running into the supply cord.

4.2 Using the machine

- Fit brushes or tools suitable for the surface to be cleaned/ prepared.
- Adjust handle to suit operator
- Tilt the machine slightly backwards so that the brushes/ tools are clear of the floor and wheel the machine to the area to be cleaned.
- Switch on the machine. Always work away from the mains socket – this will help to avoid running into the cable.
- Scarifying is normally a dry process. Because of the extremely harsh abrasive action of scarifying brushes and heavy duty tools, only resilient floors such as concrete, metal tile etc. should be scarified.
- Walk slowly behind the machine, overlapping each pass to ensure an even finish.
- Do not keep the machine rotating on one spot as this could damage the floor surface.

- Should the machine start to vibrate, or resist the cleaning action on the floor, check the brushes/ tools for wear.
- Each area of the floor should be covered at half walking pace. Some floors may require extra passes to process it thoroughly.
- On reaching the original starting point, position the machine to process another path parallel to the first and overlapping by 50mm.
- When the entire floor area has been covered, clear debris using suitable vacuum cleaner or sweeper.

4.3 Processing the floor

- We recommend that the surrounding floor area is protected with plastic sheet, sealed at the edges with adhesive tape.
- When the floor area is sealed off, the processing of the floor can begin.
- Walk at half speed down the edge of the floor, keeping the head of the machine at the edge of the tape. The discs will ride over the tape should you accidentally run onto it.
- Dispense enough solution to keep the floor wet while the machine is operating. When you reach a wall or the extent of the supply cord, return over the same path just covered.
- Each area of the floor should be covered at least twice at half walking pace. Some floors may require extra passes to process it thoroughly.
- On reaching the original starting point, position the machine to process another path parallel to the first and overlapping by 50mm.
- When the entire floor area has been covered, use a wet vacuum with a squeegee attachment to pick up the water and stone residue from the floor.
- Repeat the process using progressively finer discs in turn.
- In areas too small to use the machine, it will be necessary to use a hand polisher with a single abrasive disc.
- Wet vacuum all remaining solution to dry the floor quickly.
- NOTE - If the floor has lippage, or an area of the floor has lippage, it should be wet vacuumed after each processing grit. Lippage will damage abrasive discs and fragments could be picked up and scratch the floor surface. The floor should be vacuumed at any point if the slurry becomes heavy.
- As the floor dries, remove the protective plastic sheeting and tape.
- Where carpet or fabric materials are wet with water and surface residue, flush with clean water and extract with the wet vacuum. This process may need to be repeated several times to remove all residue.
- Where surface residue has dried on a hard surface, a clean dry cloth will quickly remove it.
- Following clean up, damp mop twice with clean water to remove surface residue. The floor will then appear dull and hazy.
- The polishing procedure should be performed after a twenty four hour drying period. On smaller floors the surface may be mechanically dried. The drive backs

should be changed to 'Instalok' type fitted with suitable pads for the polishing process. Do not use rusty or discoloured polishing pads.

- Do not leave the machine stationary during polishing, as marks will be left on the floor which may result in the whole procedure having to be repeated.
- Apply polish from a spray bottle; apply sparingly just ahead of the machine as you work. Do not leave wet polish on the floor; work in immediately as it can cause spotting on the floor.
- While processing, the technician should frequently inspect the abrasive pads for wear or damage.
- The survey should determine which grade of disc is used to begin the process. Normally coarse are the starting grit, except where lippage is extreme or surface damage is very slight.
- To eliminate lippage, weights may be added to the machine.
- The operator should examine the floor surface following each processing grade to determine whether the removal of wear or scratching is effective.

4.4 When processing is finished

- When processing is finished, unplug the machine from the power supply, remove weights, raise the brush head and remove the drive backs, and abrasive discs or pads. Wipe over the machine with a damp cloth.
- Remove and clean finishing discs and polishing pads.

4.5 Polishing and buffing

- Fit drive discs and pads suitable for the surface to be polished.
- Ensure the floor is clean and dry.
- Walk slowly behind the machine, overlapping each pass to ensure an even finish.
- Do not keep the machine rotating on one spot for more than 10-15 seconds, as this could cause overheating and damage the floor surface.
- Should the machine start to vibrate, or resist the buffing action on the floor, check the cleanliness of the pads. When dirty on one side the pad may be reversed.

4.6 When cleaning is finished

- When cleaning is finished, unplug the machine from the power supply, raise the brush head and remove brushes or pads, and wipe over the machine with a damp cloth.
- Wash brushes and pads in warm soapy water, rinse and allow to dry naturally.

5. Storage

- After use always wipe down and dry the machine, and remove and clean the drive backs, pads or brushes. Clean the rotating dust cover (10) and check the condition of the brush seals (9). The seals should be cleaned periodically to maintain their effectiveness.
- The solution tank should be emptied and flushed out with clean water.
- The machine should normally be stored with the handle in the raised position and the brush head tipped back. Never leave the brush head resting on the drive pins.
- Wrap supply cord around the handlebar and cable winder ensuring that the plug is not trailing on the floor.

- Store the machine in a dry indoor area only.

6. Maintenance

WARNING - Before undertaking maintenance operations or adjustments switch off machine and unplug from the electricity supply.

IMPORTANT – All other servicing and repairs should only be performed by a Truvox engineer or Authorised Service Agent.

IMPORTANT – Should the machine fail to operate please refer to the fault diagnosis section in the back of this instruction manual. If the problem/ remedy is not listed please contact Truvox Customer Service Department for rapid attention.

The machine requires minimum maintenance apart from the following checks by the operator prior to use:

- Supply cord - Regularly inspect sheath, plug and cord anchorage for damage or loose connection. Only replace the supply cord with the type specified in these instructions.
- Drive backs, pads and brushes - Inspect for wear and replace worn brushes. Clean under running water.
- Body of the machine - Clean with a damp cloth.
- Brushes - Inspect for wear and replace worn brushes. Clean under running water.

7. After sales service

Truvox machines are high quality machines that have been tested for safety by authorised technicians. It is always apparent that after longer working periods, electrical and mechanical components will show signs of wear and tear or ageing. To maintain operational safety and reliability the following service interval has been defined: Every year or after 250 hours. Under extreme or specialised conditions and/or insufficient maintenance, shorter maintenance intervals are necessary. Use only original Truvox spare parts. Use of other spare parts will invalidate all warranty and liability claims. Should you require after sales service please contact the supplier from whom you purchased the machine, who will arrange service. Repairs and servicing of Truvox products should only be performed by trained staff. Improper repairs can cause considerable danger to the user.

8. Guarantee

Your product is guaranteed for one year from the date of original purchase, or hire purchase, against defects in materials or workmanship during manufacture. Within the guarantee period we undertake at our discretion, to repair or replace free of charge to the purchaser, any part found to be defective, subject to the following conditions:

CONDITIONS

1. Claims made under the terms of the guarantee must be supported by the original invoice/bill of sale issued at the time of sale, or the machine Serial No.
2. For claims under this guarantee contact the supplier from whom you purchased the product who will arrange the appropriate action. Do not initially return the product as this could result in transit damage.
3. Neither Truvox nor its distributor shall be liable for any incidental or consequential loss.

4. This guarantee is governed by the laws of England.

5. This guarantee does not cover any of the following:

- Periodic maintenance, and repair or replacement of parts due to normal wear and tear.
- Damage caused by accident, misuse or neglect, or the fitting of other than genuine Truvox parts.
- Defects in other than genuine Truvox parts, or repairs, modifications or adjustments performed by other than a Truvox service engineer or authorised service agent.

- Costs and risks of transport relating directly or indirectly to the guarantee of this product.
- Consumable items such as, brushes, drive discs, filters and vacuum skirts.
- This guarantee does not affect your statutory rights, or your rights against the supplier arising from their sales or purchase contract. Truvox International Limited policy is one of continual product development and we reserve the right to alter specifications without prior notice.

9. Accessories

Item	Part No.	Usage
Crimped wire	11-2041-0500	Chequer plate cleaning
Steel wire 18G	11-2043-0500	Concrete finishing
Bronze wire 18G	11-2045-0500	Spark-free scarifying
Steel wire 3x 16G	11-2049-0500	General scarifying
Steel wire 3x 14G	11-2051-0500	Heavy duty scarifying
Spare retaining clips for heavy duty brushes (set)	03-6938-0000	
Spare horseshoe weight (17kg each)	03-7004-0000	

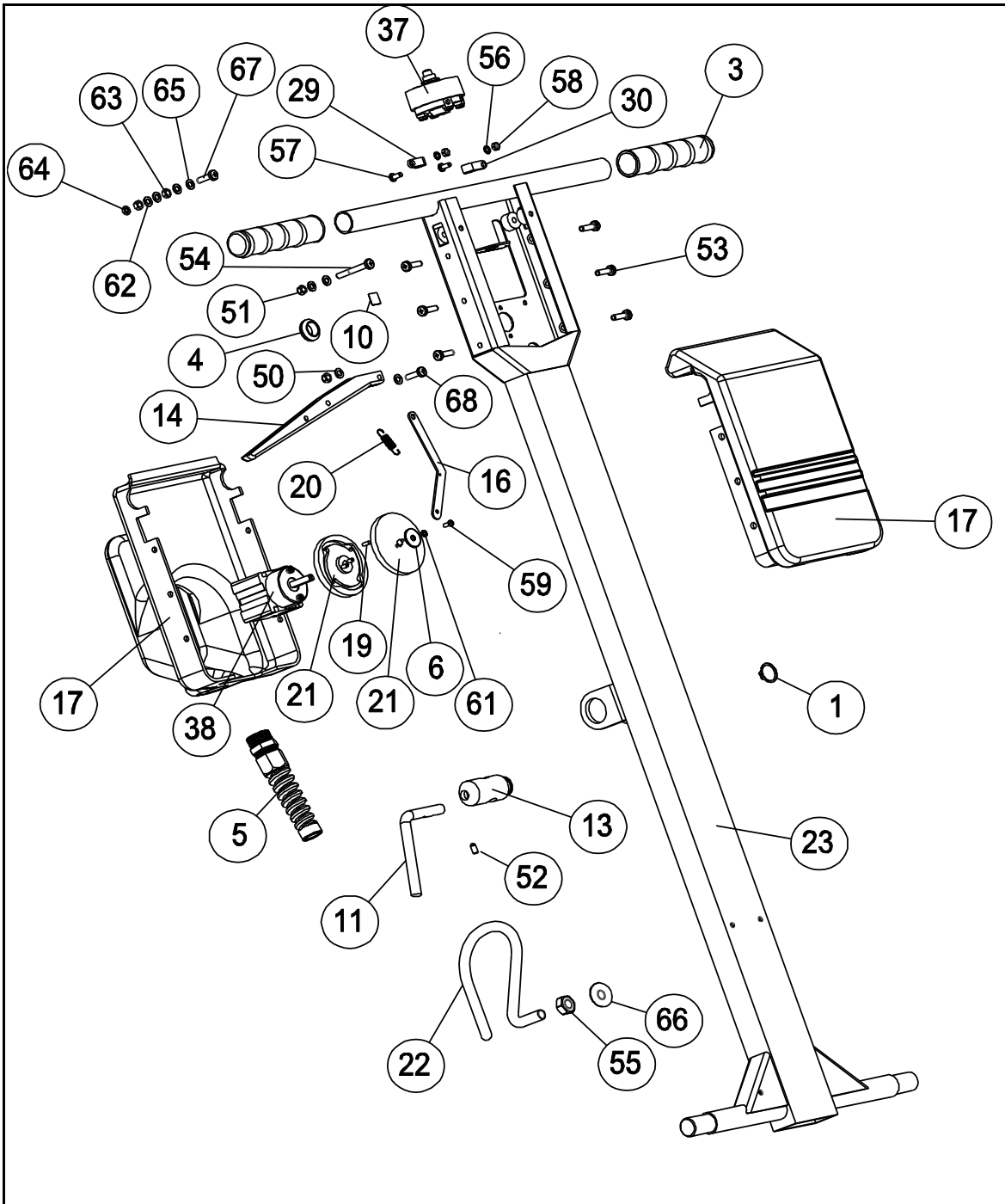
NOTE - Brushes are supplied in sets of 3.

10. Fault diagnosis

The following simple checks may be performed by the operator:

Trouble	Reason	Remedy
Motor not running	<ul style="list-style-type: none"> • Lack of voltage/ electrical supply • Safety cut-out switch faulty 	<ul style="list-style-type: none"> • Check fuse *, supply cord, plug, socket outlet and circuit breaker
Machine stalls during operation	<ul style="list-style-type: none"> • Damaged brushes/ pads 	<ul style="list-style-type: none"> • Replace brushes/ pads
Motor running, but brushes not rotating	<ul style="list-style-type: none"> • Loose or broken drive belt 	<ul style="list-style-type: none"> • Remove rotating dust cover and fit new drive belt, or call Service Agent
Machine vibrates	<ul style="list-style-type: none"> • Damaged or dirty brushes/ pads • Unequal thickness of brushes/ pads 	<ul style="list-style-type: none"> • Replace or clean brushes/ pads • Replace with 3 brushes/ pads of equal thickness

* If the fuse blows several times, the machine should be checked by an authorised Service Agent.



R48/HD Handle Assembly

Drawing Number: 09-1047-0000

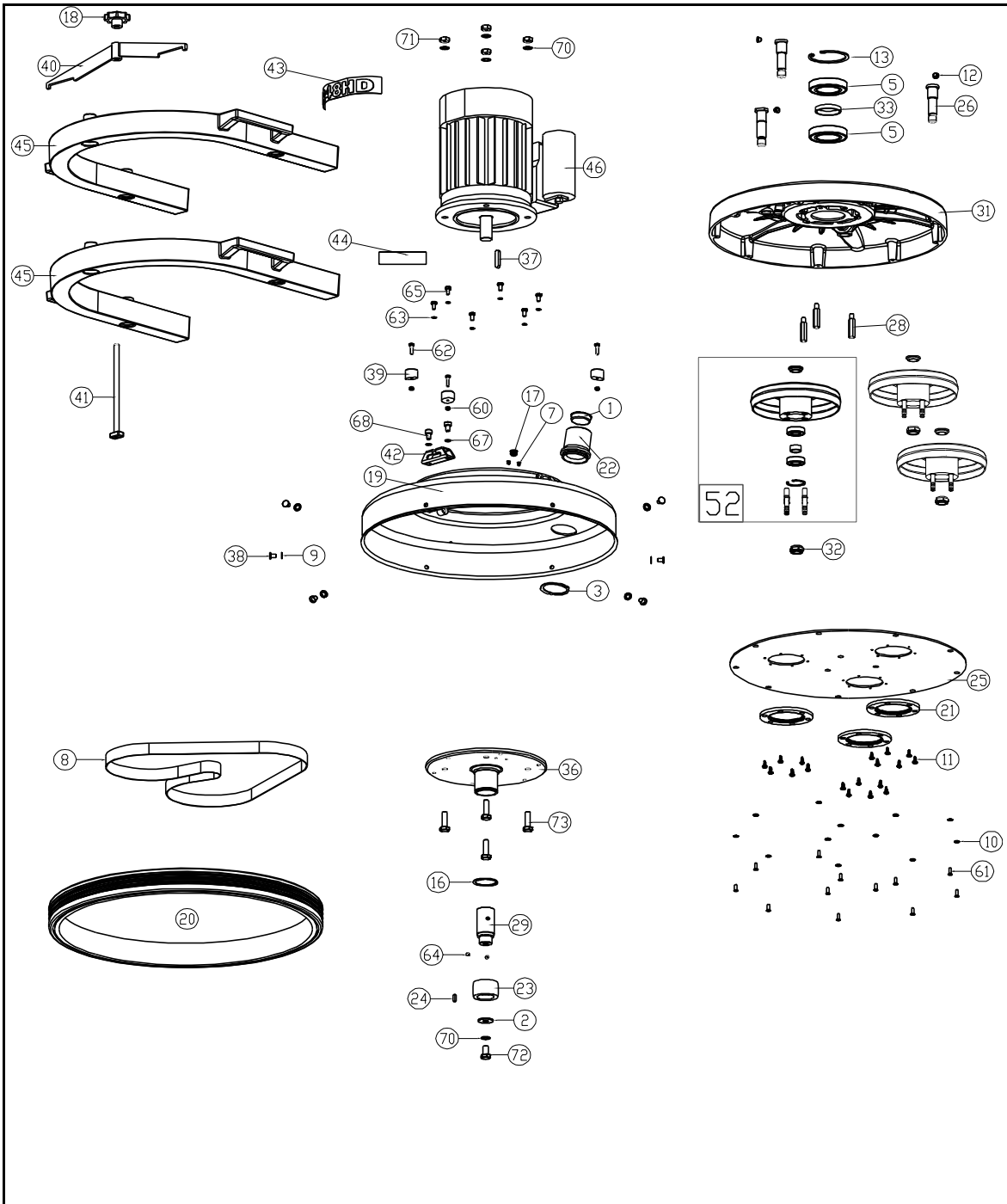
Date:	04/02/2009		
Machine:	R48/HD		
Reference Parts List:	05-4496-0000		
Modified By:	G SECHERE	DESCRIPTION OF CHANGE	ECN #
Revision:	B	COMPONENTS CHANGE	N/A

R48/HD Handle Assembly

Part Reference: 05-4496-0000

Date:	04/02/2009		
Machine:	R48/HD		
Reference Drawing Number:	09-1047-0000		
Modified By:	G SECHERE	DESCRIPTION OF CHANGE	ECN #
Revision:	B	COMPONENTS CHANGE	N/A

Ref. No.	Part No.	Part Description	Qty
CORE COMPONENTS			
1	02-3950-0000	3/4 in EXTERNAL CIRCLIP	1
2	02-4065-0000	SLEEVING 2MM CLEAR	4"
3	02-4175-0000	HANDLE GRIP	2
4	02-4176-0000	GROMMET	1
5	02-4186-0000	CABLE GLAND	1
6	02-4311-0000	PENNY WASHER	1
7	02-4149-0000	TYRAP - SMALL (BI) *NOT SOWHN*	7
8	02-3702-0000	SLEEVING FOR CABLE (10/13AMP) *NOT SHOWN*	40"
10	03-6185-0000	EARTH POINT LABEL	1
11	03-6953-0000	LOCKING HANDLE	1
13	03-6957-0000	PIVOT	1
14	03-7281-0000	LEVER	1
16	03-7298-0000	SWITCH CAM LEVER	1
17	03-7300-1000	HANDLE BOX (FRONT & REAR SET)	1
19	03-7433-0000	CAM FOLLOWERS	1
20	03-7434-0000	SPRING	1
21	03-7435-0000	REVERSE SWITCH CAMS	1
22	03-7660-0000	CABLE HOOK	1
23	03-8005-0000	CR / RHD COMMON HANDLE FRAME	1
29	02-4026-0000	P CLIP (DROPLEAD)	1
30	02-4219-0000	P CLIP (MAINS CABLE)	1
31	04-3416-0000	SUPPRESSOR RF 0.47UF	1
33	04-3576-0000	CRIMP TERMINAL PRE-INSULATED *NOT SHOWN*	5
32	04-3480-0000	TERMINAL (FORK) *NOT SHOWN*	2
34	04-3481-0000	TERMINAL (SPRING SPADE) *NOT SHOWN*	4
35	04-3602-0000	TERMINAL (RING) *NOT SHOWN*	2
36	04-3681-0000	MAINS CABLE 1.5MM SQ GREY PVC 3 CORE	600"
37	04-3686-0000	SWITCH (MOMENTARY)	1
38	04-3809-0000	SWITCH (CAM OPERATED)	1
43	04-3553-0000	CABLE 2.5MM 14AWG BLACK *NOT SHOWN* (DROPLEAD)	158"
44	04-3556-0000	CABLE 2.5MM 14AWG BLUE *NOT SHOWN* (DROPLEAD)	79"
45	04-3558-0000	CABLE 2.5MM 14AWG BROWN *NOT SHOWN* (DROPLEAD)	79"
46	04-3559-0000	CABLE 2.5MM 14AWG GREEN/YELLOW *NOT SHOWN* (DROPLEAD)	79"
47	04-3552-0000	CABLE 2.5MM 14AWG RED *NOT SHOWN* (DROPLEAD)	79"
48	04-0299-0000	PLUG (UK) *NOT SHOWN*	1
48	04-3030-0000	PLUG (EURO) *NOT SHOWN*	1
48	04-3156-0000	PLUG (110V PLUG) *NOT SHOWN*	1
48	04-3563-0000	PLUG (3-PHASE GERMAN LEGRAND 05) *NOT SHOWN*	1
FASTENERS			
50	00-0500-0503	M5 PLAIN WASHER	4
51	00-0500-0723	M5 NYLOC NUT	2
52	00-0510-0171	M5 x 10 SOCKET SET SCREW	1
53	00-0512-0013	M5 X 12 POZI PAN HEAD SCREW	6
54	00-0540-0013	SCREW, M5 X 40 PAN HEAD	1
55	00-1000-0703	M10 FULL NUT	1
56	00-0400-0523	M4 SHAKEPROOF WASHER	2
57	00-0410-0023	M410 POZI PAN HEAD	2
58	00-0400-0703	M4 FULL NUT	2
59	00-0308-0013	M3x8 POZI PAN HD SCREW	1
61	00-0300-0503	M3 PLAIN WASHER	1
62	00-0500-0507	M5 BRASS WASHER	3
63	00-0500-0703	M5 FULL NUT	2
64	00-0500-0713	M5 LOCK NUT	1
65	00-0500-0521	M5 SHAKEPROOF WASHER Z/P	1
66	00-1000-0523	M10 SHAKEPROOF WASHER	1
67	00-0520-0013	M5x20 POZI PAN HD SCREW	1
68	00-0518-0013	M5 X 12 POZI PAN HEAD SCREW	1



R48/HD Head Assembly

Drawing Number: 09-1072-0000

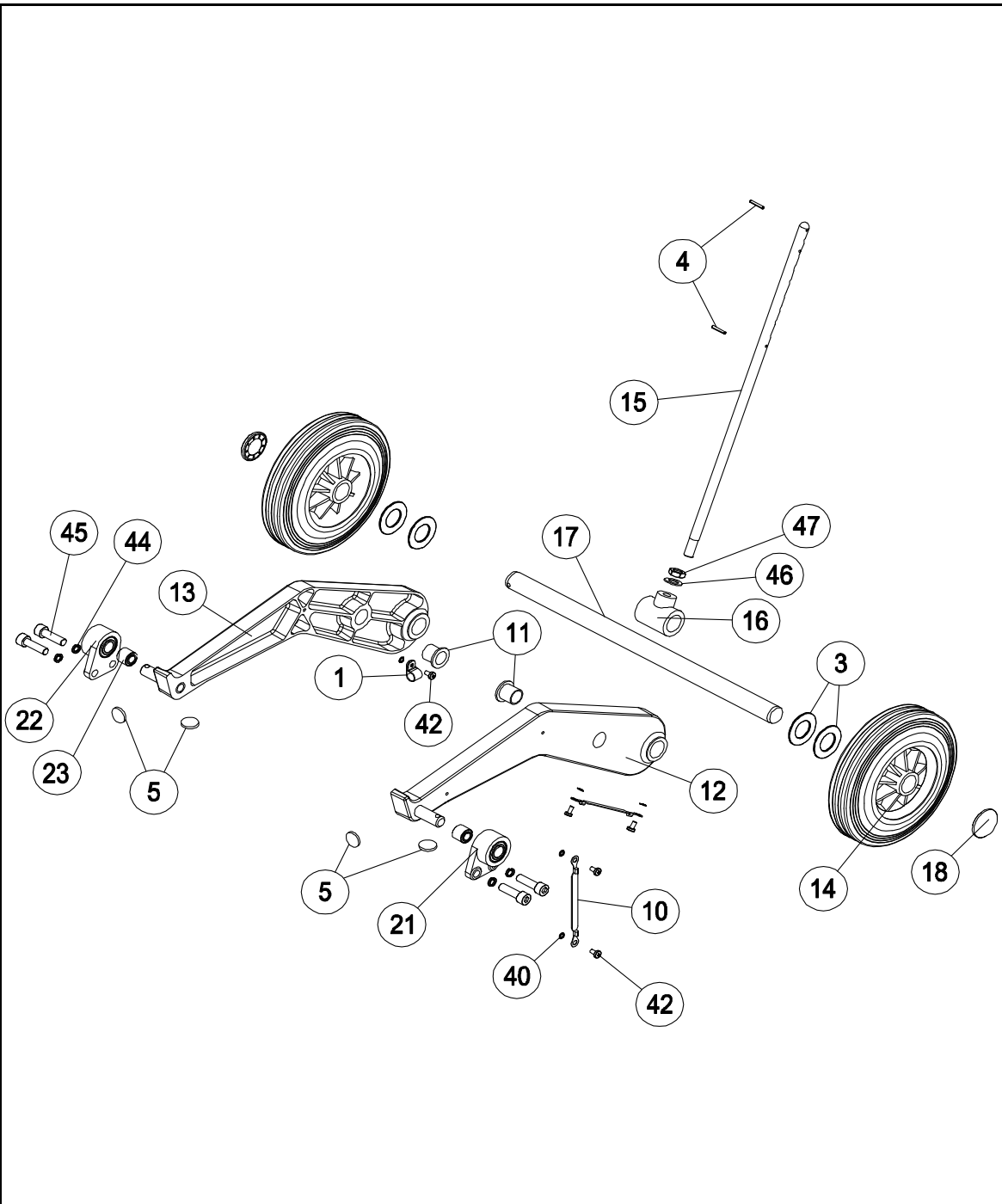
Date:	04/02/2009		
Machine:	R48/HD		
Reference Parts List:	05-3917-0000		
Modified By:	G SECHERE	DESCRIPTION OF CHANGE	ECN #
Revision:	B	COMPONENTS CHANGE	N/A

R48/HD Head Assembly

Part Reference: 05-3917-0000

Date:	04/02/2009		
Machines:	R48/HD		
Reference Drawing Number:	09-1072-0000		
Approved By:	G SECHERE	DESCRIPTION OF CHANGE	ECN #
Revision:	B	COMPONENTS CHANGE	N/A

Ref. No.	Part No.	Part Description	Qty
CORE COMPONENTS			
1	02-4587-0000	VAC TUBE PLUG	1
2	02-4335-0000	M10 WASHER	1
3	02-4184-0000	CIRCLIP 46.5 ID (VACUUM OUTLET)	1
4	02-4025-0000	M5 SPLINED LARGE FLANGE *NOT SHOWN*	1
5	02-4020-0000	BEARING 6009-2RS	2
7	02-4035-0000	POP RIVET (HOLE BLANKING)	2
8	02-4191-0000	BELT - NITTA 1465x25 (BLUE POLY)	1
9	02-4085-0000	STARLOCK WASHER 8mm	6
10	02-4320-0000	BRASS CUP WASHER No8	12
11	02-4323-0000	SELF TAP No10x12 POZI PAN HD ST/ST	18
12	02-4381-0000	PLASTIC INSERT (REF 12157)	3
13	02-4380-0000	CIRCLIP INTERNAL 1300 - 75mm	1
16	02-4024-0000	CIRCLIP EXTERNAL	1
17	02-4161-0000	HOLE PLUG	1
18	02-4447-0000	CLAMP KNOB	1
19	03-6972-0000	BUMPER SHIELD	1
20	03-7278-1000	BUMPER RUBBER	63.5"
21	03-6910-0000	DUST SEAL	3
22	03-8090-0000	2" O/D VACUUM OUTLET	1
23	03-6927-0000	MOTOR PULLEY NOM DIA 50mm	1
24	03-6931-0000	KEY 3/16 x 3/16 x 5/8	1
25	03-6940-0000	BOTTOM COVER PLATE	1
26	03-7331-0000	BRUSH SPINDLE - NO WATER	3
28	03-6946-0000	BOTTOM COVER SPACER	3
29	03-6968-0000	MOTOR SHAFT EXTENSION	1
31	03-6962-0000	EDU BOWL (BLUE) CR48	1
32	03-7220-0000	M16 NYLOC NUT (M'C'D)	3
33	03-7284-0000	CENTRE BEARING SPACER	1
36	03-6971-0000	SPIGOT PLATE	1
37	03-7008-0000	SPECIAL KEYBAR	1
38	03-6967-0000	HD SKIRT PIN	6
39	03-6969-0000	WEIGHT LOCATOR	3
40	03-7714-0000	WEIGHT CLAMP BAR	1
41	03-7715-0000	WEIGHT CLAMP BOLT	1
42	03-7716-0000	WEIGHT CLAMP BRACKET	1
43	03-6806-0000	DECAL - R48 HD	1
44	03-7944-0000	DECAL - CIMEX FROM TRUVOX *NOT SHOWN*	1
45	03-7004-0000	BALLAST WEIGHT	2
46	04-3852-0000	MOTOR 230V 50Hz 1.5kW 4 POLE	1
47	04-3602-0000	TERMINAL (RING) *NOT SHOWN*	6
52	05-4546-0000	R48HD PULLEY ASSEMBLY	3
53	72470A	HEAT SHRINK TUBING	12"
FASTENERS			
60	00-0500-0723	M5 NYLOC NUT ST/ST	3
61	00-0512-0033	M5x12 COUNTERSUNK SCREW ST/ST	12
62	00-0520-0013	M5x20 POZI PAN HD SCREW ST/ST	3
63	00-0600-0523	M6 INT SHAKEPROOF WASHER ST/ST	6
64	00-0606-0171	M6x6 GRUB SCREW SOCKET HD	2
65	00-0612-0113	M6 x 12 HEX HD BOLT ST/ST	6
67	00-0800-0523	M8 INT SHAKEPROOF WASHER ST/ST	2
68	00-0812-0093	M8 x 12 CAP HD SCREW ST/ST	2
70	00-1000-0523	M10 INTERNAL SHAKEPROOF WASHER	5
71	00-1000-0703	M10 LOCK NUT ST/ST	4
72	00-1020-0123	M10x20 BOLT S/S	1
73	00-1035-0111	M10x35 BOLT Z/P	4



R48/HD Chassis Assembly

Drawing Number: 09-1064-0000

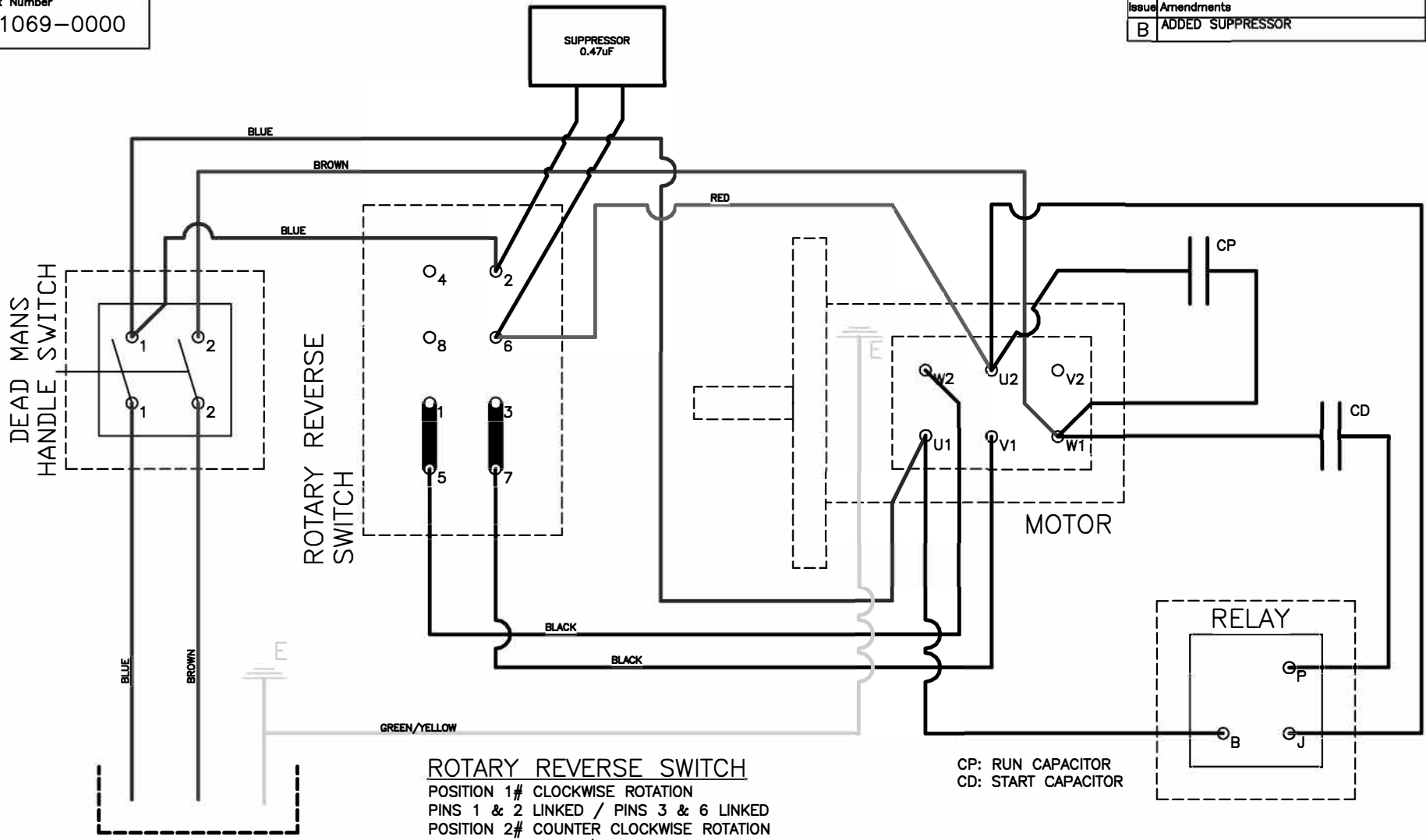
Date:	04/02/2009		
Machine:	R48/HD		
Reference Parts List:	05-4479-0000		
Modified By:	G SECHERE	DESCRIPTION OF CHANGE	ECN #
Revision:	B	COMPONENTS CHANGE	N/A

R48/HD Chassis Assembly

05-4479-0000

Date:	04/02/2009		
Machine:	R48/HD		
Reference Drawing Number:	09-1064-0000		
Approved By:	G SECHERE	DESCRIPTION OF CHANGE	ECN #
Revision:	B	COMPONENTS CHANGE	N/A

Ref. No.	Part No.	Part Description	Qty
CORE COMPONENTS			
1	02-4448-0000	P CLIP	1
3	02-4363-0000	WASHER (USED AS WHEEL SPA CEP SUBJECT TO QTY CHANGE)	4
4	02-4208-0000	SELLOCK PIN 1/8x7/8	2
5	02-4187-0000	BUFFER RUBBER 19mm x 1.5mm	4
10	03-6899-0000	EARTH LEAD (WITH INTEGRAL TERMS)	2
11	03-6919-0000	FORK HANDLE BUSH (BLACK)	2
12	03-8175-0000	CR48 SOLID LIFTING FORK (L/H)	1
13	03-8176-0000	CR48 SOLID LIFTING FORK (R/H)	1
14	03-7277-0000	WHEEL 200mm DIA	2
15	03-7279-0000	SWIVEL CLAMP ROD	1
16	03-7306-0000	TEE PIECE	1
17	03-7308-0000	AXLE - CR48,CR61	1
18	03-7658-0000	STARLOCK HUB CAP	2
20	04-3688-0000	20mm CONDUIT *NOT SHOWN*	43"
21	03-6925-0000	PIVOT BLOCK (L/H)	1
22	03-6926-0000	PIVOT BLOCK (R/H)	1
23	03-6929-0000	SILENT BEARING	2
FASTENERS			
40	00-0500-0521	M5 INTERNAL SHAKEPROOF WASHER	5
42	00-0512-0013	M5x12 POZI PAN HEAD SCREW ST/ST	5
44	7CL003	M10 SPRING WASHER ST/ST	4
45	00-1030-0103	M10x30 CAP HD SCREW ST/ST	4
46	00-1200-0503	M12 WASHER FORM B ST/ST	1
47	00-1200-0713	M12 LOCKNUT ST/ST	1



ROTARY REVERSE SWITCH
 POSITION 1# CLOCKWISE ROTATION
 PINS 1 & 2 LINKED / PINS 3 & 6 LINKED
 POSITION 2# COUNTER CLOCKWISE ROTATION
 PINS 2 & 3 LINKED / PINS 1 & 6 LINKED

CP: RUN CAPACITOR
 CD: START CAPACITOR

- FOR USE ON THE FOLLOWING MACHINES:-
- | | | |
|-----------------|--------------|----------------|
| CR48/DF | CR48/DF/EURO | CG48 |
| CR76 | CR48/DF/RCD | CG48/110 |
| CR76/EURO | R48/HD | CG48/110/50-60 |
| R48/HD/220 | R48/HD/EURO | CG48/EURO |
| R48/HD/R/230/50 | RHD76 | CG48/EURO/60 |
| RHD76/EURO | RHD76/110/50 | R48/HD/110/50 |

3 CORE MAINS
CABLE



3RD ANGLE PROJECTION
 DIMENSIONS IN
 MILLIMETRES
 DO NOT SCALE DRAWING
 ©COPYRIGHT

Material	-----
Finish	-----
Drawn	S JONES
Checked	G.SECHERE

General Tolerance	±0.25
Scale	N.T.S.
Date	02.04.09

TRUVOX™ INTERNATIONAL LIMITED

Title
(CIMEX) WIRING DIAGRAM WITH
LEROY SOMER MOTOR

Drawing/Part Number
09-1069-0000

RED
ON
MASTER

Authorised dealer: