



SPORTON LAB.

Certificate No : L181654L082

CERTIFICATE

● **EQUIPMENT :** 300N Wireless LAN Broadband Router
MODEL NO. : BR-6428GN; GR-428GN; 3G-6408GN; 3G-408GN;
3G-6408n; LT-6408n
APPLICANT : EDIMAX TECHNOLOGY CO., LTD.
No.3,Wu-Chuan 3rd Road,Wu-Ku Industrial Park, New
Taipei City, Taiwan



I HEREBY

CERTIFY THAT :

THE MEASUREMENTS SHOWN IN THIS TEST REPORT WERE MADE IN ACCORDANCE WITH THE PROCEDURES GIVEN IN **EUROPEAN COUNCIL DIRECTIVE 2006/95/EC**. THE EQUIPMENT **PASSED** THE TEST PERFORMED ACCORDING TO

European Standard:

IEC 60950-1: 2005 (2nd Edition)
EN60950-1: 2006+A11:2009

This evaluation was carried out to the best of our knowledge and ability, and our responsibility is limited to the exercise of reasonable care. This certification is not intended to relieve the sellers from their contractual obligations.

THE CERTIFICATE WAS CARRIED OUT ON May 28, 2012 AT SPORTON INTERNATIONAL INC. LAB.

Hans Hsieh
Director

LOW VOLTAGE DIRECTIVE TEST REPORT IEC 60950-1: 2005 (2nd Edition) and/or EN 60950-1: 2006 Information technology equipment – Safety – Part 1: General requirements	
Report Reference No.	L181654L082
Compiled by (+ signature)	Nancy Shi Engineer <i>Nancy Shi</i>
Approved by (+ signature)	Peter Hsu Reviewer <i>Peter Hsu</i>
Date of Issue	May 28, 2012
Testing laboratory	Sporton International Inc.
Address	14 Fl-2, No. 186, Jianyi Road, Zhonghe District, New Taipei City, Taiwan.
Testing location	Taiwan
Applicant	EDIMAX TECHNOLOGY CO., LTD.
Address	No.3,Wu-Chuan 3rd Road,Wu-Ku Industrial Park, New Taipei City, Taiwan
Standard	IEC 60950-1: 2005 (2nd Edition) and/or EN60950-1: 2006+A11:2009
Test Report Form No.	LVD 60950-1
Test procedure	Sporton LVD type test approval
Procedure deviation.....	N/A
Non-standard test method.....	N/A
Type of test object	300N Wireless LAN Broadband Router
Trademark	EDIMAX
Model/type reference.....	BR-6428GN; GR-428GN; 3G-6408GN; 3G-408GN; 3G-6408n; LT-6408n
Manufacturer	EDIMAX TECHNOLOGY CO., LTD. No.3,Wu-Chuan 3rd Road,Wu-Ku Industrial Park, New Taipei City, Taiwan
Rating.....	DC 5 V, 1A

Test item particulars:	
Equipment mobility	<input checked="" type="checkbox"/> movable <input type="checkbox"/> hand-held <input type="checkbox"/> transportable <input type="checkbox"/> stationary <input type="checkbox"/> for building-in <input type="checkbox"/> direct plug-in
Connection to the mains	<input type="checkbox"/> pluggable equipment <input type="checkbox"/> type A <input type="checkbox"/> type B <input type="checkbox"/> permanent connection <input type="checkbox"/> detachable power supply cord <input type="checkbox"/> non-detachable power supply cord <input checked="" type="checkbox"/> not directly connected to the mains
Operating condition	<input checked="" type="checkbox"/> continuous <input type="checkbox"/> rated operating / resting time:
Access location	<input checked="" type="checkbox"/> operator accessible <input type="checkbox"/> restricted access location
Over voltage category (OVC)	<input type="checkbox"/> OVC I <input type="checkbox"/> OVC II <input type="checkbox"/> OVC III <input type="checkbox"/> OVC IV <input checked="" type="checkbox"/> other: N/A
Mains supply tolerance (%) or absolute mains supply values	Not directly connected to the mains
Tested for IT power systems	<input type="checkbox"/> Yes <input checked="" type="checkbox"/> No
IT testing, phase-phase voltage (V)	N/A
Class of equipment	<input type="checkbox"/> Class I <input type="checkbox"/> Class II <input checked="" type="checkbox"/> Class III <input type="checkbox"/> Not classified
Considered current rating (A)	N/A
Pollution degree (PD)	<input type="checkbox"/> PD 1 <input checked="" type="checkbox"/> PD 2 <input type="checkbox"/> PD 3
IP protection class	IPX0
Altitude during operation (m)	Up to 2000 m
Altitude of test laboratory (m)	Not over 2000 m
Mass of equipment (kg)	Approx. 0.216g (Type 1), 0.196g (Type 2), 0.232g (Type 3), 0.240g (Type 4)
Test case verdicts	
Test case does not apply to the test object.....	N (N.A.)
Test item does meet the requirement.....	P (Pass)
Test item does not meet the requirement.....	F (Fail)
Testing:	
- Date of receipt of test item	2012-03-20
- Date(s) of performance of test.....	2012-03-21
General remarks:	
The test result presented in this report relate only to the object(s) tested.	
This report shall not be reproduced, except in full, without the written approval of the Issuing testing laboratory.	
"(see appended table)" refers to a table appended to the report.	
Throughout this report a comma (point) is used as the decimal separator.	

Comments:

The test results are true for the test sample(s) only.

A part of this test report or certificate should not be duplicated in any way; however, the duplication of the whole document is allowed.

This test-report includes the following documents:

Test report - (39 pages)

Photo - (27 pages)

General product information:

-The equipment is a 300N Wireless LAN Broadband Router, intended for used with information technology equipment.

-The external power adaptor is approved product and complied with the requirements of sub-clause 2.5 as a limited power source, see appended table 1.5.1 for detail.

-There are two type of enclosure for used and plastic enclosure was secured together by screws

- A) Overall dimensions of the equipment were approximate 157.4 by 105.9 by 29.3 mm. (see appendix photo of type 1 and 2, that are different of USB optional provided and wireless antenna type)

- B) Overall dimensions of the equipment were approximate 180.6 by 111.6 by 25.7 mm. (see appendix photo of type 3)

-Except heating /abnormal test were conducted on type 2 and 3, all test were conducted on type 2 replace to others.

-All models are identical except for model designation for marketing purpose only

-The equipment was evaluated for use in a maximum air ambient of 40°C.

-The test sample is pre-production without serial number.

-Instructions and equipment marking related to safety is applied in the language that is acceptable in the country in which the equipment is to be sold.

Clause	Requirement - Test	Result - Remark	Verdict
--------	--------------------	-----------------	---------

1	GENERAL		Pass
---	----------------	--	-------------

1.5	Components		Pass
1.5.1	Comply with IEC 60950 or relevant component standard	Components, which were found to affect safety aspects, comply with the requirements of this standard or with the safety aspects of the relevant IEC/EN component standards.	Pass
1.5.2	Evaluation and testing of components	Components, which are certified to IEC/EN and/or national standards, are used correctly within their ratings or have been evaluated during this approval.	Pass
1.5.3	Thermal controls		N.A.
1.5.4	Transformers		N.A.
1.5.5	Interconnecting cables		N.A.
1.5.6	Capacitors bridging insulation		N.A.
1.5.7	Resistors bridging insulation		N.A.
1.5.7.1	Resistors bridging functional, basic or supplementary insulation		N.A.
1.5.7.2	Resistors bridging double or reinforced insulation between a.c. mains and other circuits		N.A.
1.5.7.3	Resistors bridging double or reinforced insulation between a.c. mains and antenna or coaxial cable		N.A.
1.5.8	Components in equipment for IT power systems		N.A.
1.5.9	Surge suppressors		N.A.
1.5.9.1	General		N.A.
1.5.9.2	Protection of VDRs		N.A.
1.5.9.3	Bridging of functional insulation by a VDR		N.A.
1.5.9.4	Bridging of basic insulation by a VDR		N.A.
1.5.9.5	Bridging of supplementary, double or reinforced insulation by a VDR		N.A.

1.6	Power interface		Pass
1.6.1	AC power distribution systems.....		N.A.
1.6.2	Input current	See appended table 1.6.2	Pass
1.6.3	Voltage limit of hand-held equipment	.	N.A.

1.6.4	Neutral conductor		N.A.
1.7	Marking and instructions		Pass
1.7.1	Power rating	See below	Pass
	Rated voltage(s) or voltage range(s) (V)	The unit does not directly connect to Mains supply. (Rated voltage DC 5.0V is optional marked)	N.A.
	Symbol for nature of supply, for d.c. only	no direct connection to the mains supply (DC symbol is optional marked)	N.A.
	Rated frequency or rated frequency range (Hz)	DC input	N.A.
	Rated current (mA or A)	The unit does not directly connect to Mains supply. (Rated current 1.0 A is optional marked)	N.A.
	Manufacturer's name or trade-mark or identification mark	See page 1.	Pass
	Type/model or type reference	See page 1.	Pass
	Symbol for Class II equipment only	Class III equipment.	N.A.
	Other symbols	Additional symbols or marking do not give rise to misunderstandings.	Pass
1.7.2	Safety instructions and marking	See below.	Pass
1.7.2.1	General	Operation/installation instruction is provided with each unit.	Pass
1.7.2.2	Disconnect devices		N.A.
1.7.2.3	Overcurrent protective device		N.A.
1.7.2.4	IT power distribution systems		N.A.
1.7.2.5	Operator access with a tool		N.A.
1.7.2.6	Ozone		N.A.
1.7.3	Short duty cycles		N.A..
1.7.4	Supply voltage adjustment		N.A.
	Methods and means of adjustment; reference to installation instructions		N.A.
1.7.5	Power outlets on the equipment		N.A.
1.7.6	Fuse identification (marking, special fusing characteristics, cross-reference)		N.A.
1.7.7	Wiring terminals		N.A.
1.7.7.1	Protective earthing and bonding terminals		N.A.
1.7.7.2	Terminal for a.c. mains supply conductors		N.A.
1.7.7.3	Terminals for d.c. mains supply conductors		N.A.

1.7.8	Controls and indicators		N.A.
1.7.8.1	Identification, location and marking		N.A.
1.7.8.2	Colours		N.A.
1.7.8.3	Symbols according to IEC 60417		N.A.
1.7.8.4	Markings using figures		N.A.
1.7.9	Isolation of multiple power sources		N.A.
1.7.10	Thermostats and other regulating devices		N.A.
1.7.11	Durability		N.A.
1.7.12	Removable parts	No markings placed on removable parts.	Pass
1.7.13	Replaceable batteries		N.A.
	Language(s)		—
1.7.14	Equipment for restricted access locations	Not intended for use in restricted access locations.	N.A.

2	PROTECTION FROM HAZARDS		Pass
----------	--------------------------------	--	-------------

2.1	Protection from electric shock and energy hazards		Pass
2.1.1	Protection in operator access areas	See below	Pass
2.1.1.1	Access to energized parts	The unit is supplied from approved power supply that provides SELV. Only SELV circuit inside the unit. No electrical shock or energy hazards.	Pass
	Test by inspection		N.A.
	Test with test finger (Figure 2A)		N.A.
	Test with test pin (Figure 2B).....		N.A.
	Test with test probe (Figure 2C)		N.A.
2.1.1.2	Battery compartments.....		N.A.
2.1.1.3	Access to ELV wiring		N.A.
	Working voltage (V_{peak} or V_{rms}); minimum distance through insulation (mm)		—
2.1.1.4	Access to hazardous voltage circuit wiring		N.A.
2.1.1.5	Energy hazards	No energy hazard in operator access area. The connectors of the equipment below 240VA.	Pass
2.1.1.6	Manual controls		N.A.
2.1.1.7	Discharge of capacitors in equipment		N.A.
	Time-constant (s); measured voltage (V).....		—
2.1.1.8	Energy hazards – d.c. mains supplies		N.A.

	a) Capacitor connected to the d.c. mains supply		N.A.
	b) Internal battery connected to the d.c. mains supply		N.A.
2.1.1.9	Audio amplifiers		N.A.
2.1.2	Protection in service access areas		N.A.
2.1.3	Protection in restricted access locations		N.A.

2.2	SELV circuits		Pass
2.2.1	General requirements	See below	Pass
2.2.2	Voltages under normal conditions (V)	Between any SELV circuits 42.4 V peak and 60 Vdc are not exceeded.	Pass
2.2.3	Voltages under fault conditions (V).....	Single fault did not cause excessive voltage in accessible SELV circuits. Limits of 71V peak and 120Vd.c. were not exceeded within 0.2s and limits 42.4V peak and 60Vd.c. were not exceeded for longer than 0.2s.	Pass
2.2.4	Connection of SELV circuits to other circuits	SELV circuit only connected to SELV	Pass

2.3	TNV circuits		N.A.
2.3.1	Limits		N.A.
	Type of TNV circuits.....		—
2.3.2	Separation from others circuits and from accessible parts		N.A.
2.3.2.1	General requirements		N.A.
2.3.2.2	Protection by basic insulation		N.A.
2.3.2.3	Protection by earthing		N.A.
2.3.2.4	Protection by other constructions		N.A.
2.3.3	Separation from hazardous voltages		N.A.
	Insulation employed		—
2.3.4	Connection of TNV circuits to other circuits		N.A.
	Insulation employed		—
2.3.5	Test for operating voltages generated externally		N.A.

2.4	Limited current circuits		N.A.
2.4.1	General requirements		N.A.
2.4.2	Limit values		N.A.
	Frequency (Hz)		—
	Measured current (mA).....		—

	Measured voltage (V) :		—
	Measured capacitance (μF).....		—
2.4.3	Connection of limited current circuits to other circuits		N.A.

2.5	Limited power sources		Pass
	a) Inherently limited output	For data port	Pass
	b) Impedance limited output		N.A.
	c) Regulating network limited output under normal operating and single fault condition	USB circuit design from 5V output of adaptor directly. Which compliance with LPS. No test was conducted on USB port.	Pass
	d) Overcurrent protective device limited output		N.A.
	Max. output voltage (V), max. output current (A), max. apparent power (VA)	See appended table 2.5	—
	Current rating of overcurrent protective device (A)		—

2.6	Provisions for earthing and bonding		N.A.
2.6.1	Protective earthing	Class III equipment.	N.A.
2.6.2	Functional earthing		N.A.
2.6.3	Protective earthing conductors and protective bonding conductors		N.A.
2.6.3.1	General		N.A.
2.6.3.2	Size of protective earthing conductors		N.A.
	Rated current (A), cross-sectional area (mm ²), AWG.....		—
2.6.3.3	Size of protective bonding conductors		N.A.
	Rated current (A), cross-sectional area (mm ²), AWG.....		—
	Protective current rating (A), cross-sectional area (mm ²), AWG		N.A.
2.6.3.4	Resistance of earthing conductors and their terminations; resistance (Ω), voltage drop (V), test current (A), duration (min).....		N.A.
2.6.3.5	Colour of insulation		N.A.
2.6.4	Terminals		N.A.
2.6.4.1	General		N.A.
2.6.4.2	Protective earthing and bonding terminals		N.A.
	Rated current (A), type and nominal thread diameter (mm)		—

2.6.4.3	Separation of the protective earthing conductor from protective bonding conductors		N.A.
2.6.5	Integrity of protective earthing		N.A.
2.6.5.1	Interconnection of equipment		N.A.
2.6.5.2	Components in protective earthing conductors and protective bonding conductors		N.A.
2.6.5.3	Disconnection of protective earth		N.A.
2.6.5.4	Parts that can be removed by an operator		N.A.
2.6.5.5	Parts removed during servicing		N.A.
2.6.5.6	Corrosion resistance		N.A.
2.6.5.7	Screws for protective bonding		N.A.
2.6.5.8	Reliance on telecommunication network or cable distribution system		N.A.

2.7	Overcurrent and earth fault protection in primary circuits		N.A.
2.7.1	Basic requirements	Class III equipment.	N.A.
	Instructions when protection relies on building installation.		N.A.
2.7.2	Faults not simulated in 5.3.7		N.A.
2.7.3	Short-circuit backup protection		N.A.
2.7.4	Number and location of protective devices		N.A.
2.7.5	Protection by several devices		N.A.
2.7.6	Warning to service personnel		N.A.

2.8	Safety interlocks		N.A.
2.8.1	General principles		N.A.
2.8.2	Protection requirements		N.A.
2.8.3	Inadvertent reactivation		N.A.
2.8.4	Fail-safe operation		N.A.
2.8.5	Moving parts		N.A.
2.8.6	Overriding		N.A.
2.8.7	Switches and relays		N.A.
2.8.7.1	Contact gaps (mm)		N.A.
2.8.7.2	Overload test		N.A.
2.8.7.3	Endurance test		N.A.
2.8.7.4	Electric strength test		N.A.
2.8.8	Mechanical actuators		N.A.

2.9	Electrical insulation		Pass
2.9.1	Properties of insulating materials		Pass
2.9.2	Humidity conditioning		N.A.
	Humidity (%), Temperature (°C)		—
2.9.3	Grade of insulation	The unit supply by SELV, only Functional insulation in the unit. See Clause 5.3.4.	Pass
2.9.4	Separation from hazardous voltages		N.A.
	Method(s) used		—

2.10	Clearances, creepage distances and distances through insulation		Pass
2.10.1	General	Functional insulation only. See Clause 5.3.4.	Pass
2.10.1.1	Frequency		N.A.
2.10.1.2	Pollution degrees		N.A.
2.10.1.3	Reduced values for functional insulation		N.A.
2.10.1.4	Intervening unconnected conductive parts		N.A.
2.10.1.5	Insulation with varying dimensions		N.A.
2.10.1.6	Special separation requirements		N.A.
2.10.1.7	Insulation in circuits generating starting pulses		N.A.
2.10.2	Determination of working voltage		N.A.
2.10.2.1	General		N.A.
2.10.2.2	RMS working voltage		N.A.
2.10.2.3	Peak working voltage		N.A.
2.10.3	Clearances		N.A.
2.10.3.1	General		N.A.
2.10.3.2	Mains transient voltages		N.A.
	a) AC mains supply		N.A.
	b) Earthed d.c. mains supplies		N.A.
	c) Unearthed d.c. mains supplies		N.A.
	d) Battery operation		N.A.
2.10.3.3	Clearances in primary circuits		N.A.
2.10.3.4	Clearances in secondary circuits		N.A.
2.10.3.5	Clearances in circuits having starting pulses		N.A.
2.10.3.6	Transients from a.c. mains supply		N.A.
2.10.3.7	Transients from d.c. mains supply		N.A.
2.10.3.8	Transients from telecommunication networks and cable distribution systems		N.A.

2.10.3.9	Measurement of transient voltage levels		N.A.
	a) Transients from a mains supply		N.A.
	For an a.c. mains supply		N.A.
	For a d.c. mains supply		N.A.
	b) Transients from a telecommunication network..		N.A.
2.10.4	Creepage distances		N.A.
2.10.4.1	General		N.A.
2.10.4.2	Material group and comparative tracking index		N.A.
	CTI tests		N.A.
2.10.4.3	Minimum creepage distances		N.A.
2.10.5	Solid insulation		N.A.
2.10.5.1	General		N.A.
2.10.5.2	Distances through insulation		N.A.
2.10.5.3	Insulating compound as solid insulation		N.A.
2.10.5.4	Semiconductor devices		N.A.
2.10.5.5.	Cemented joints		N.A.
2.10.5.6	Thin sheet material – General		N.A.
2.10.5.7	Separable thin sheet material		N.A.
	Number of layers (pcs).....		—
2.10.5.8	Non-separable thin sheet material		N.A.
2.10.5.9	Thin sheet material – standard test procedure		N.A.
	Electric strength test		—
2.10.5.10	Thin sheet material – alternative test procedure		N.A.
	Electric strength test		—
2.10.5.11	Insulation in wound components		N.A.
2.10.5.12	Wire in wound components		N.A.
	Working voltage		N.A.
	a) Basic insulation not under stress		N.A.
	b) Basic, supplementary, reinforced insulation		N.A.
	c) Compliance with Annex U		N.A.
	Two wires in contact inside wound component; angle between 45° and 90°		N.A.
2.10.5.13	Wire with solvent-based enamel in wound components		N.A.
	Electric strength test		—
	Routine test		N.A.
2.10.5.14	Additional insulation in wound components		N.A.
	Working voltage		N.A.

	- Basic insulation not under stress		N.A.
	- Supplementary, reinforced insulation		N.A.
2.10.6	Construction of printed boards		N.A.
2.10.6.1	Uncoated printed boards		N.A.
2.10.6.2	Coated printed boards		N.A.
2.10.6.3	Insulation between conductors on the same inner surface of a printed board		N.A.
2.10.6.4	Insulation between conductors on different layers of a printed board		N.A.
	Distance through insulation		N.A.
	Number of insulation layers (pcs)		N.A.
2.10.7	Component external terminations		N.A.
2.10.8	Tests on coated printed boards and coated components		N.A.
2.10.8.1	Sample preparation and preliminary inspection		N.A.
2.10.8.2	Thermal conditioning (°C)		N.A.
2.10.8.3	Electric strength test		—
2.10.8.4	Abrasion resistance test		N.A.
2.10.9	Thermal cycling		N.A.
2.10.10	Test for Pollution Degree 1 environment and insulating compound		N.A.
2.10.11	Tests for semiconductor devices and cemented joints		N.A.
2.10.12	Enclosed and sealed parts		N.A.

3	WIRING, CONNECTIONS AND SUPPLY	Pass
----------	---------------------------------------	-------------

3.1	General		Pass
3.1.1	Current rating and overcurrent protection	All wires/conductors possess adequate cross-sectional areas for their intended application and Internal wiring are adequately insulated.	Pass
3.1.2	Protection against mechanical damage	The wires are well routed away from sharp edges, etc. and are adequately fixed to prevent excessive strain on wire and terminals.	Pass
3.1.3	Securing of internal wiring	The wires are positioned in such a manner that prevents excessive strain, loosening of terminal connections and damage of conductor insulation.	Pass
3.1.4	Insulation of conductors		N.A.
3.1.5	Beads and ceramic insulators		N.A.

3.1.6	Screws for electrical contact pressure		N.A.
3.1.7	Insulation materials in electrical connections		N.A.
3.1.8	Self-tapping and spaced thread screws		N.A.
3.1.9	Termination of conductors		N.A.
	10 N pull test		N.A.
3.1.10	Sleeving on wiring		N.A.

3.2	Connection to a mains supply		N.A.
3.2.1	Means of connection	Class III equipment.	N.A.
3.2.1.1	Connection to an a.c. mains supply		N.A.
3.2.1.2	Connection to a d.c. mains supply		N.A.
3.2.2	Multiple supply connections		N.A.
3.2.3	Permanently connected equipment		N.A.
	Number of conductors, diameter (mm) of cable and conduits		—
3.2.4	Appliance inlets		N.A.
3.2.5	Power supply cords		N.A.
3.2.5.1	AC Power supply cords		N.A.
	Type.....		—
	Rated current (A), cross-sectional area (mm ²), AWG.....		—
3.2.5.2	DC power supply cords		N.A.
3.2.6	Cord anchorages and strain relief		N.A.
	Mass of equipment (kg), pull (N)		—
	Longitudinal displacement (mm)		—
3.2.7	Protection against mechanical damage		N.A.
3.2.8	Cord guards		N.A.
	Diameter or minor dimension D (mm); test mass (g)		—
	Radius of curvature of cord (mm).....		—
3.2.9	Supply wiring space		N.A.

3.3	Wiring terminals for connection of external conductors		N.A.
3.3.1	Wiring terminals	No wiring terminals	N.A.
3.3.2	Connection of non-detachable power supply cords		N.A.
3.3.3	Screw terminals		N.A.
3.3.4	Conductor sizes to be connected		N.A.

	Rated current (A), cord/cable type, cross-sectional area (mm ²).....		—
3.3.5	Wiring terminal sizes		N.A.
	Rated current (A), type and nominal thread diameter (mm)		—
3.3.6	Wiring terminals design		N.A.
3.3.7	Grouping of wiring terminals		N.A.
3.3.8	Stranded wire		N.A.

3.4	Disconnection from the mains supply		N.A.
3.4.1	General requirement	Class III equipment.	N.A.
3.4.2	Disconnect devices		N.A.
3.4.3	Permanently connected equipment		N.A.
3.4.4	Parts which remain energized		N.A.
3.4.5	Switches in flexible cords		N.A.
3.4.6	Number of poles – single-phase and d.c. equipment		N.A.
3.4.7	Number of poles – three-phase equipment		N.A.
3.4.8	Switches as disconnect devices		N.A.
3.4.9	Plugs as disconnect devices		N.A.
3.4.10	Interconnected equipment		N.A.
3.4.11	Multiple power sources		N.A.

3.5	Interconnection of equipment		Pass
3.5.1	General requirements	See below.	Pass
3.5.2	Types of interconnection circuits	Interconnection circuits of SELV through the connectors.	Pass
3.5.3	ELV circuits as interconnection circuits		N.A.
3.5.4	Data ports for additional equipments	See appended table 2.5	Pass

4	PHYSICAL REQUIREMENTS		Pass
----------	------------------------------	--	-------------

4.1	Stability		N.A.
	Angle of 10°	< 7 kg.	N.A.
	Test: force (N)		N.A.

4.2	Mechanical strength		N.A.
4.2.1	General		N.A.

4.2.2	Steady force test, 10 N		N.A.
4.2.3	Steady force test, 30 N		N.A.
4.2.4	Steady force test, 250 N		N.A.
4.2.5	Impact test		N.A.
	Fall test		N.A.
	Swing test		N.A.
4.2.6	Drop test; height (mm)		N.A.
4.2.7	Stress relief test		N.A.
4.2.8	Cathode ray tubes		N.A.
	Picture tube separately certified.....		N.A.
4.2.9	High pressure lamps		N.A.
4.2.10	Wall or ceiling mounted equipment; force (N)		N.A.

4.3	Design and construction		Pass
4.3.1	Edges and corners	All edges and corners are rounded or smoothed	Pass
4.3.2	Handles and manual controls; force (N)		N.A.
4.3.3	Adjustable controls		N.A.
4.3.5	Connection of plugs and sockets		N.A.
4.3.6	Direct plug-in equipment		N.A.
	Dimensions (mm) of mains plug for direct plug-in		N.A.
	Torque and pull test of mains plug for direct plug-in; torque (Nm);pull(N)		N.A.
4.3.7	Heating elements in earthed equipment		N.A.
4.3.8	Batteries		N.A.
	- Overcharging of a rechargeable battery		N.A.
	- Unintentional charging of a non-rechargeable battery		N.A.
	- Reverse charging of a rechargeable battery		N.A.
	- Excessive discharging rate for any battery		N.A.
4.3.9	Oil and grease		N.A.
4.3.10	Dust, powders, liquids and gases		N.A.
4.3.11	Containers for liquids or gases		N.A.
4.3.12	Flammable liquids		N.A.
	Quantity of liquid (l)		N.A.
	Flash point (°C)		N.A.
4.3.13	Radiation; type of radiation	See below.	Pass

4.3.13.1	General	See below.	Pass
4.3.13.2	Ionizing radiation		N.A.
	Measured radiation (pA/kg)		—
	Measured high-voltage (kV)		—
	Measured focus voltage (kV)		—
	CRT markings		—
4.3.13.3	Effect of ultraviolet (UV) radiation on materials		N.A.
	Part, property, retention after test, flammability classification		N.A.
4.3.13.4	Human exposure to ultraviolet (UV) radiation		N.A.
4.3.13.5	Laser (including LEDs)	For LED user as indicating lights Indicating LED used.	Pass
	Laser class		—
4.3.13.6	Other types		N.A.

4.4	Protection against hazardous moving parts		N.A.
4.4.1	General		N.A.
4.4.2	Protection in operator access areas		N.A.
4.4.3	Protection in restricted access locations		N.A.
4.4.4	Protection in service access areas		N.A.

4.5	Thermal requirements		Pass
4.5.1	General	See below	Pass
4.5.2	Temperature tests	See appended table 4.5	Pass
	Normal load condition per Annex L	See appended table 1.6.2	—
4.5.3	Temperature limits for materials	See appended table 4.5	Pass
4.5.4	Touch temperature limits	See appended table 4.5	Pass
4.5.5	Resistance to abnormal heat		N.A.

4.6	Openings in enclosures		Pass
4.6.1	Top and side openings	See below	Pass
	Dimensions (mm)	See appended table 4.6.1.	—
4.6.2	Bottoms of fire enclosures	Fire enclosure is not required, reference only	N.A.
	Construction of the bottom, dimensions (mm)	See appended table 4.6.1.	—
4.6.3	Doors or covers in fire enclosures		N.A.
4.6.4	Openings in transportable equipment		N.A.
4.6.4.1	Constructional design measures		N.A.

	Dimensions (mm)		—
4.6.4.2	Evaluation measures for larger openings		N.A.
4.6.4.3	Use of metallized parts		N.A.
4.6.5	Adhesives for constructional purposes		N.A.
	Conditioning temperature (°C)/time (weeks)		—

4.7	Resistance to fire		Pass
4.7.1	Reducing the risk of ignition and spread of flame	See below.	Pass
	Method 1, selection and application of components wiring and materials	Use of materials with the required flammability classes.	Pass
	Method 2, application of all of simulated fault condition tests		N.A.
4.7.2	Conditions for a fire enclosure	See below.	Pass
4.7.2.1	Parts requiring a fire enclosure		N.A.
4.7.2.2	Parts not requiring a fire enclosure	<p>With having the following parts :</p> <ul style="list-style-type: none"> ● Components in secondary (supplied by LPS). ● Components mounted on material of flammability Class V-1. <p>The fire enclosure is not required.</p>	Pass
4.7.3	Materials	See below.	Pass
4.7.3.1	General	See appended table 1.5.1 for PCB	Pass
4.7.3.2	Materials for fire enclosures		N.A.
4.7.3.3	Materials for components and other parts outside fire enclosures		N.A.
4.7.3.4	Materials for components and other parts inside fire enclosures		N.A.
4.7.3.5	Materials for air filter assemblies		N.A.
4.7.3.6	Materials used in high-voltage components		N.A.

5	ELECTRICAL REQUIREMENTS AND SIMULATED ABNORMAL CONDITIONS	Pass
----------	--	-------------

5.1	Touch current and protective conductor current		N.A.
5.1.1	General	Class III equipment.	N.A.
5.1.2	Equipment under test (EUT)		N.A.
5.1.2.1	Single connection to an a.c. mains supply		N.A.
5.1.2.2	Redundant multiple connections to an a.c. mains supply		N.A.
5.1.2.3	Simultaneous multiple connections to an a.c. mains supply		N.A.

5.1.3	Test circuit		N.A.
5.1.4	Application of measuring instrument		N.A.
5.1.5	Test procedure		N.A.
5.1.6	Test measurements		N.A.
	Supply voltage (V)		—
	Measured touch current (mA)		—
	Max. allowed touch current (mA)		—
	Measured protective conductor current (mA)		—
	Max. allowed protective conductor current (mA).....		N.A.
5.1.7	Equipment with touch current exceeding 3.5 mA		N.A.
5.1.7.1	General		N.A.
5.1.7.2	Simultaneous multiple connections to the supply		N.A.
5.1.8	Touch currents to and from telecommunication networks and cable distribution systems and from telecommunication networks		N.A.
5.1.8.1	Limitation of the touch current to a telecommunication network and a cable distribution system		N.A.
	Supply voltage (V)		—
	Measured touch current (mA)		—
	Max. allowed touch current (mA).....		—
5.1.8.2	Summation of touch currents from telecommunication networks		N.A.
	a) EUT with earthed telecommunication ports		N.A.
	b) EUT whose telecommunication ports have no reference to protective earth		N.A.

5.2	Electric strength		N.A.
5.2.1	General		N.A.
5.2.2	Test procedure		N.A.

5.3	Abnormal operating and fault conditions		Pass
5.3.1	Protection against overload and abnormal operation	See below.	Pass
5.3.2	Motors		N.A.
5.3.3	Transformers		N.A.
5.3.4	Functional insulation	Complied with the requirements c).	Pass
5.3.5	Electromechanical components		N.A.
5.3.6	Audio amplifiers in ITE		N.A.

5.3.7	Simulation of faults	See appended table 5.3	Pass
5.3.8	Unattended equipment		N.A.
5.3.9	Compliance criteria for abnormal operating and fault conditions	See below.	Pass
5.3.9.1	During the tests	Neither fire the equipment nor molten metal was emitted.	Pass
5.3.9.2	After the tests		N.A.

6	CONNECTION TO TELECOMMUNICATION NETWORKS	N.A.
----------	---	-------------

6.1	Protection of telecommunication network service personnel, and users of other equipment connected to the network, from hazards in the equipment	N.A.
6.1.1	Protection from hazardous voltages	N.A.
6.1.2	Separation of the telecommunication network from earth	N.A.
6.1.2.1	Requirements	N.A.
	Supply voltage (V)	—
	Current in the test circuit (mA)	—
6.1.2.2	Exclusions	N.A.

6.2	Protection of equipment users from overvoltages on telecommunication networks	N.A.
6.2.1	Separation requirements	N.A.
6.2.2	Electric strength test procedure	N.A.
6.2.2.1	Impulse test	N.A.
6.2.2.2	Steady-state test	N.A.
6.2.2.3	Compliance criteria	N.A.

6.3	Protection of telecommunication wiring system from overheating	N.A.
	Max. output current (A)	—
	Current limiting method	—

7	CONNECTION TO CABLE DISTRIBUTION SYSTEMS	N.A.
----------	---	-------------

7.1	General		N.A.
7.2	Protection of cable distribution system service persons, and users of other equipment connected to the system, from hazardous voltages in the equipment		N.A.
7.3	Protection of equipment users from overvoltages on the cable distribution system		N.A.



7.4	Insulation between primary circuits and cable distribution systems		N.A.
7.4.1	General		N.A.
7.4.2	Voltage surge test		N.A.
7.4.3	Impulse test		N.A.

A	ANNEX A, TESTS FOR RESISTANCE TO HEAT AND FIRE	N.A.
A.1	Flammability test for fire enclosures of movable equipment having a total mass exceeding 18 kg, and of stationary equipment (see 4.7.3.2)	N.A.
A.1.1	Samples	—
	Wall thickness (mm)	—
A.1.2	Conditioning of samples; temperature (°C)	N.A.
A.1.3	Mounting of samples	N.A.
A.1.4	Test flame (see IEC 60695-11-3)	N.A.
	Flame A, B, C or D	N.A.
A.1.5	Test procedure	N.A.
A.1.6	Compliance criteria	N.A.
	Sample 1 burning time (s)	—
	Sample 2 burning time (s)	—
	Sample 3 burning time (s)	—
A.2	Flammability test for fire enclosures of movable equipment having a total mass not exceeding 18 kg, and for material and components located inside fire enclosures (see 4.7.3.2 and 4.7.3.4)	N.A.
A.2.1	Samples, material	—
	Wall thickness (mm)	—
A.2.2	Conditioning of samples; temperature (°C)	N.A.
A.2.3	Mounting of samples	N.A.
A.2.4	Test flame (see IEC 60695-11-4)	N.A.
	Flame A, B or C	—
A.2.5	Test procedure	N.A.
A.2.6	Compliance criteria	N.A.
	Sample 1 burning time (s)	—
	Sample 2 burning time (s)	—
	Sample 3 burning time (s)	—
A.2.7	Alternative test acc. To IEC 60695-11-5, cl. 5 and 9	N.A.
	Sample 1 burning time (s)	—
	Sample 2 burning time (s)	—
	Sample 3 burning time (s)	—
A.3	Hot flaming oil test (see 4.6.2)	N.A.
A.3.1	Mounting of samples	N.A.
A.3.2	Test procedure	N.A.
A.3.3	Compliance criterion	N.A.

B	ANNEX B, MOTOR TESTS UNDER ABNORMAL CONDITIONS (see 4.7.2.2 and 5.3.2)		N.A.
B.1	General requirements		N.A.
	Position		—
	Manufacturer		—
	Type		—
	Rated values		—
B.2	Test conditions		N.A.
B.3	Maximum temperatures		N.A.
B.4	Running overload test		N.A.
B.5	Locked-rotor overload test		N.A.
	Test duration (days)		—
	Electric strength test: test voltage (V)		—
B.6	Running overload test for DC motors in secondary circuits		N.A.
B.6.1	General		N.A.
B.6.2	Test procedure		N.A.
B.6.3	Alternative test procedure		N.A.
B.6.4	Electric strength test; test voltage (V)		N.A.
B.7	Locked-rotor overload test for DC motors in secondary circuits		N.A.
B.7.1	General		N.A.
B.7.2	Test procedure		N.A.
B.7.3	Alternative test procedure;.....		N.A.
B.7.4	Electric strength test; test voltage (V)		N.A.
B.8	Test for motors with capacitors		N.A.
B.9	Test for three-phase motors		N.A.
B.10	Test for series motors		N.A.
	Operating voltage (V)		—

C	ANNEX C, TRANSFORMERS (see 1.5.4 and 5.3.3)		N.A.
	Position		—
	Manufacturer		—
	Type		—
	Rated values		—
	Method of protection		—
C.1	Overload test		N.A.

C.2	Insulation		N.A.
	Protection from displacement of windings		N.A.

D	ANNEX D, MEASURING INSTRUMENTS FOR TOUCH-CURRENT TESTS		N.A.
D.1	Measuring instrument		N.A.
D.2	Alternative measuring instrument		N.A.

E	ANNEX E, TEMPERATURE RISE OF A WINDING (see 1.4.13)		N.A.
----------	--	--	-------------

F	ANNEX F, MEASUREMENT OF CLEARANCES AND CREEPAGE DISTANCES (see 2.10)		N.A.
----------	---	--	-------------

G	ANNEX G, ALTERNATIVE METHOD FOR DETERMINING MINIMUM CLEARANCES		N.A.
G.1	Clearances		N.A.
G.1.1	General		N.A.
G.1.2	Summary of the procedure for determining minimum clearances		N.A.
G.2	Determination of mains transient voltage (V)		N.A.
G.2.1	AC mains supply		N.A.
G.2.2	Earthed d.c. mains supplies		N.A.
G.2.3	Unearthed d.c. mains supplies		N.A.
G.2.4	Battery operation		N.A.
G.3	Determination of telecommunication network transient voltage (V).....		N.A.
G.4	Determination of required withstand voltage (V)....		N.A.
G.4.1	Mains transients and internal repetitive peaks		N.A.
G.4.2	Transients from telecommunication networks		N.A.
G.4.3	Combination of transients		N.A.
G.4.4	Transients from cable distribution systems		N.A.
G.5	Measurement of transient levels (V)		N.A.
	a) Transients from a mains supply		N.A.
	For an a.c. mains supply		N.A.
	For a d.c. mains supply		N.A.
	b) Transients from a telecommunication network		N.A.
G.6	Determination of minimum clearances		N.A.

H	ANNEX H, IONIZING RADIATION (see 4.3.13)		N.A.
----------	---	--	-------------

J	ANNEX J, TABLE OF ELECTROCHEMICAL POTENTIALS (see 2.6.5.6)	N.A.
	Metal used	—

K	ANNEX K, THERMAL CONTROLS (see 1.5.3 and 5.3.8)	N.A.
K.1	Making and breaking capacity	N.A.
K.2	Thermostat reliability; operating voltage (V)	N.A.
K.3	Thermostat endurance test; operating voltage (V)	N.A.
K.4	Temperature limiter endurance; operating voltage (V)	N.A.
K.5	Thermal cut-out reliability	N.A.
K.6	Stability of operation	N.A.

L	ANNEX L, NORMAL LOAD CONDITIONS FOR SOME TYPES OF ELECTRICAL BUSINESS EQUIPMENT (see 1.2.2.1 and 4.5.2)	Pass
L.1	Typewriters	N.A.
L.2	Adding machines and cash registers	N.A.
L.3	Erasers	N.A.
L.4	Pencil sharpeners	N.A.
L.5	Duplicators and copy machines	N.A.
L.6	Motor-operated files	N.A.
L.7	Other business equipment	Pass

M	ANNEX M, CRITERIA FOR TELEPHONE RINGING SIGNALS (see 2.3.1)	N.A.
M.1	Introduction	N.A.
M.2	Method A	N.A.
M.3	Method B	N.A.
M.3.1	Ringling signal	N.A.
M.3.1.1	Frequency (Hz)	—
M.3.1.2	Voltage (V)	—
M.3.1.3	Cadence; time (s), voltage (V)	—
M.3.1.4	Single fault current (mA)	—
M.3.2	Tripping device and monitoring voltage	N.A.
M.3.2.1	Conditions for use of a tripping device or a monitoring voltage	N.A.
M.3.2.2	Tripping device	N.A.
M.3.2.3	Monitoring voltage (V)	N.A.

N	ANNEX N, IMPULSE TEST GENERATORS (see 1.5.7.2, 1.5.7.3, 2.10.3.9, 6.2.2.1, 7.3.2, 7.4.3 and Clause G.5)		N.A.
N.1	ITU-T impulse test generators		N.A.
N.2	IEC 60065 impulse test generator		N.A.

P	ANNEX P, NORMATIVE REFERENCES		Pass
----------	--------------------------------------	--	-------------

Q	ANNEX Q, Voltage dependent resistors (VDRs) (see 1.5.9.1)		N.A.
	a) Preferred climatic categories		N.A.
	b) Maximum continuous voltage		N.A.
	c) Pulse current		N.A.

R	ANNEX R, EXAMPLES OF REQUIREMENTS FOR QUALITY CONTROL PROGRAMMES		N.A.
R.1	Minimum separation distances for unpopulated coated printed boards (see 2.10.6.2)		N.A.
R.2	Reduced clearances (see 2.10.3)		N.A.

S	ANNEX S, PROCEDURE FOR IMPULSE TESTING (see 6.2.2.3)		N.A.
S.1	Test equipment		N.A.
S.2	Test procedure		N.A.
S.3	Examples of waveforms during impulse testing		N.A.

T	ANNEX T, GUIDANCE ON PROTECTION AGAINST INGRESS OF WATER (see 1.1.2)		N.A.
			—

U	ANNEX U, INSULATED WINDING WIRES FOR USE WITHOUT INTERLEAVED INSULATION (see 2.10.5.4).		N.A.
			—

V	ANNEX V, AC POWER DISTRIBUTION SYSTEMS (see 1.6.1)		N.A.
V.1	Introduction		N.A.
V.2	TN power distribution systems		N.A.

W	ANNEX W, SUMMATION OF TOUCH CURRENTS		N.A.
W.1	Touch current from electronic circuits		N.A.
W.1.1	Floating circuits		N.A.
W.1.2	Earthed circuits		N.A.

W.2	Interconnection of several equipments		N.A.
W.2.1	Isolation		N.A.
W.2.2	Common return, isolated from earth		N.A.
W.2.3	Common return, connected to protective earth		N.A.

X	ANNEX X, MAXIMUM HEATING EFFECT IN TRANSFORMER TESTS (see clause C.1)		N.A.
X.1	Determination of maximum input current		N.A.
X.2	Overload test procedure		N.A.

Y	ANNEX Y, ULTRAVIOLET LIGHT CONDITIONING TEST (see 4.3.13.3)		N.A.
Y.1	Test apparatus		N.A.
Y.2	Mounting of test samples		N.A.
Y.3	Carbon-arc light-exposure apparatus		N.A.
Y.4	Xenon-arc light-exposure apparatus		N.A.

Z	ANNEX Z, OVERVOLTAGE CATEGORIES (see 2.10.3.2 and Clause G.2)		N.A.
----------	--	--	-------------

AA	ANNEX AA, MANDREL TEST (see 2.10.5.8)		N.A.
-----------	--	--	-------------

BB	ANNEX BB, CHANGES IN THE SECOND EDITION		—
-----------	--	--	---

1.5.1	TABLE: list of critical components					Pass
object/part No.	manufacturer/ trademark	type/model	technical data	standard	mark(s) of conformity	
Adaptor	Dee Van Enterprise Co., Ltd.	DSC-6PFA-05 FEU 050100	I/p: 100-240 Vac, 50/60 Hz. 0.2 A; o/p : 5Vdc, 1.0A. Class II, 50 °C, L.P.S.	EN 60950-1: 2006+A11+A1	TUV Rh (Certificate No.: S1 50148464 006)	
	Dee Van Enterprise Co., Ltd.	DSA-12PFA-05 FEU-050200	I/p: 100-240 Vac, 50/60 Hz, 0.5A; o/p : 5Vdc, 2.0A. Class II, 40 °C, L.P.S.	EN 60950-1: 2006+A11+A1	TUV Rh (Certificate No.: S1 50195500)	
PCB	--	--	Min. V-1, Min. 105 °C	UL 796	UL	
Plastic Enclosure	--	--	HB min.	UL 94	UL	
* Additional testing and evaluation may be required based on auditing agency's discretion.						

1.6.2	TABLE: electrical data (in normal conditions)						Pass
fuse #	I _{rated} (A)	U (V)	P (W)	I (A)	I _{fuse} (A)	condition/status	
--	1.0	5 Vdc	3.350	0.67	--	Max. Normal load.	
Comments: Maximum Normal Load: The equipment continuous communicated to other device via wireless, LAN ports and WAN port and With each USB port loaded 2.5 W.							

2.1.1.5	TABLE: max. V, A, VA test				N.A.
Voltage (rated) (V)	Current (rated) (A)		Voltage (max.) (V)	Current (max.) (A)	VA (max.) (VA)
Note(s)					

2.1.1.7	TABLE: discharge test				N.A.
Condition	τ calculated (s)	τ measured (s)	t _u → 0V (s)	Comments	
Note(s)					

2.2.2	TABLE: Hazardous voltage measurement				N.A.
Transformer	Location	max. Voltage		Voltage Limitation Component	
		V peak	V d.c.		
Note(s)					

2.2.3	TABLE: SEL voltage measurement		N.A.
Location	Voltage measured (V)		Comments
Note(s)			

2.4.2	TABLE: limited current circuit measurement					N.A.
Location	Voltage (V)	Current (mA)	Freq. (kHz)	Limit (mA)	Comments	

Note(s)					

2.5	TABLE: limited power source measurement			Pass
	Limits	Measured	Verdict	
For LAN port 1~4				
According to Table 2B (normal condition), Pin 1~8, Uoc = 0 V				
current (in A)	8	0	Pass	
Apparent power (in VA)	≤ 100	0	Pass	
For WAN port				
According to Table 2B (normal condition), Pin 1~8, Uoc = 0 V				
current (in A)	8	0	Pass	
Apparent power (in VA)	≤ 100	0	Pass	

2.6.3.4	TABLE: ground continue test		N.A.
Location	Resistance measured(m Ω)	Comments	
Note(s)			

2.10.2	TABLE: working voltage measurement			N.A.
Location	RMS voltage (V)	Peak voltage (V)	Comments	
Note(s)				

2.10.3 and 2.10.4	TABLE: clearance and creepage distance measurements					N.A.
clearance cl and creepage distance dcr at/of:	Up (V)	U r.m.s. (V)	required cl (mm)	cl (mm)	required dcr (mm)	dcr (mm)
Notes: Functional insulation only.						

2.10.5	TABLE: distance through insulation measurements				N.A.
distance through insulation di at/of:	U r.m.s. (V)	test voltage (V)	required di (mm)	di (mm)	

Note(s)

4.3.8	TABLE: Batteries								N.A.	
The tests of 4.3.8 are applicable only when appropriate battery data is not available				--				N.A.		
Is it possible to install the battery in a reverse polarity position?				--				--		
	Non-rechargeable batteries			Rechargeable batteries						
	Discharging		Un-intentional charging	Charging		Discharging		Reversed charging		
	Meas. Current	Manuf. Specs.		Meas. Current	Manuf. Specs.	Meas. Current	Manuf. Specs.	Meas. Current	Manuf. Specs.	
Max. current during normal condition	--	--	--	--	--	--	--	--	--	
Max. current during fault condition	--	--	--	--	--	--	--	--	--	
Test results:										
- Chemical leaks								Verdict		
- Explosion of the battery								N.A.		
- Emission of flame or expulsion of molten metal								N.A.		
- Electric strength tests of equipment after completion of tests								N.A.		
Supplementary information:										

4.5	TABLE: maximum temperatures			Pass
	test voltage (V).....	5Vdc	5Vdc	—
	t _{amb1} (°C).....	--	--	—
	t _{amb2} (°C).....	--	--	—
temperature rise dT of part/at:		T (°C)		allowed T _{max} (°C)
Test Sample	Type 2	Type 3	--	
PCB near U17	51.2	56.3	105	
PCB near U11	47.4	51.6	105	
PCB near IC(RTL8192CE)	57.4	61.8	105	
C255 body	45.1	47.4	105	
L134 body	45.6	48.0	105	
Plastic enclosure inside near IC (RTL8192CE)	46.2	50.6	--	

Plastic enclosure outside near IC (RTL8192CE)	44.2		47.9		95
Ambient temperature T of winding:	40.0(22.8)		40.0(22.9)		--
	R1 (Ω)	R2 (Ω)	dT ($^{\circ}$ K)	allowed T_{max} ($^{\circ}$ C)	insulation class
Supplementary information:					
1) All values for T ($^{\circ}$ C) are re-calculated from Tamb respectively.					
2) The maximum ambient temperature specified by manufacturer is 40 $^{\circ}$ C (Tma)					

4.5.5	TABLE: ball pressure test of thermoplastics parts			N.A.
	Allowed impression diameter (mm):	≤ 2 mm		—
part:		test temperature ($^{\circ}$ C)	impression diameter (mm)	
Note(s)				

4.6.1, 4.6.2	TABLE: Enclosure openings			Pass
	Location	Size(mm)	Comments	
Type A enclosure				
	Top	10.8 x 0.2 max.	Numbers rectangle openings.	
	Side	11.1 x 1.2 max.	Numbers rectangle openings.	
	Bottom	7.6 x 0.2 max.	Numbers rectangle openings.	
Type B enclosure				
	Side	5.2 x 1.1 max.	Numbers rectangle openings.	
	Bottom	17.5 x 1.6 max.	Numbers rectangle openings.	
Note(s):				

4.7	Table: Resistance to fire				N.A.
Part	Manufacturer of material	Type of material	Thickness (mm)	Flammability class	Evidence
Note(s):					

5.1.6	TABLE: touch current measurement				N.A.
Condition	L→terminal A (mA)	N→terminal A (mA)	Limit	Comments	

Note(s)

5.2	TABLE: electric strength tests, impulse tests and voltage surge tests			N.A.
test voltage applied between:		Voltage shape (AC, DC, impulse, surge)	test voltage (V)	breakdown
Note(s)				

5.3	TABLE: fault condition tests							Pass
ambient temperature (°C)..... :		See below.					—	
model/type of power supply..... :		See appended table 1.5.1					—	
manufacturer of power supply..... :		See appended table 1.5.1					—	
rated markings of power supply..... :		See appended table 1.5.1					—	
No.	component No.	fault	test voltage (V)	test time	fuse No.	fuse current (A)	result	
1.	Ventilation Openings (Type 2)	Blocked	5Vdc	5 hr	--	--	Unit normal operation. No hazardous. No damaged. Max temperature: PCB near IC(RTL8192)= 45.5°C Ambient =22.9°C	
2.	Ventilation Openings (Type 3)	Blocked	5Vdc	3 hr	--	--	Unit normal operation. No hazardous. No damaged. Max temperature: PCB near IC(RTL8192)= 47.9°C Ambient =22.5°C	
Note(s)								

EN 60950-1:2006 – CENELEC COMMON MODIFICATIONS																																																																										
Contents	<p>Add the following annexes:</p> <p>Annex ZA (normative) Normative references to international publications with their corresponding European publications</p> <p>Annex ZB (normative) Special national conditions</p> <p>Annex ZC (informative) A-deviations</p>	Pass																																																																								
General	<p>Delete all the “country” notes in the reference document according to the following list:</p> <table border="0"> <tr> <td>1.4.8</td> <td>Note 2</td> <td>1.5.1</td> <td>Note 2 & 3</td> <td>1.5.7.1</td> <td>Note</td> </tr> <tr> <td>1.5.8</td> <td>Note 2</td> <td>1.5.9.4</td> <td>Note</td> <td>1.7.2.1</td> <td>Note 4, 5 & 6</td> </tr> <tr> <td>2.2.3</td> <td>Note</td> <td>2.2.4</td> <td>Note</td> <td>2.3.2</td> <td>Note</td> </tr> <tr> <td>2.3.2.1</td> <td>Note 2</td> <td>2.3.4</td> <td>Note 2</td> <td>2.6.3.3</td> <td>Note 2 & 3</td> </tr> <tr> <td>2.7.1</td> <td>Note</td> <td>2.10.3.2</td> <td>Note 2</td> <td>2.10.5.13</td> <td>Note 3</td> </tr> <tr> <td>3.2.1.1</td> <td>Note</td> <td>3.2.4</td> <td>Note 3.</td> <td>2.5.1</td> <td>Note 2</td> </tr> <tr> <td>4.3.6</td> <td>Note 1 & 2</td> <td>4.7</td> <td>Note 4</td> <td>4.7.2.2</td> <td>Note</td> </tr> <tr> <td>4.7.3.1</td> <td>Note 2</td> <td>5.1.7.1</td> <td>Note 3 & 4</td> <td>5.3.7</td> <td>Note 1</td> </tr> <tr> <td>6</td> <td>Note 2 & 5</td> <td>6.1.2.1</td> <td>Note 2</td> <td>6.1.2.2</td> <td>Note</td> </tr> <tr> <td>6.2.2</td> <td>Note 6.</td> <td>2.2.1</td> <td>Note 2</td> <td>6.2.2.2</td> <td>Note</td> </tr> <tr> <td>7.1</td> <td>Note 3</td> <td>7.2</td> <td>Note</td> <td>7.3</td> <td>Note 1 & 2</td> </tr> <tr> <td>G.2.1</td> <td>Note 2</td> <td>Annex H</td> <td>Note 2</td> <td></td> <td></td> </tr> </table>	1.4.8	Note 2	1.5.1	Note 2 & 3	1.5.7.1	Note	1.5.8	Note 2	1.5.9.4	Note	1.7.2.1	Note 4, 5 & 6	2.2.3	Note	2.2.4	Note	2.3.2	Note	2.3.2.1	Note 2	2.3.4	Note 2	2.6.3.3	Note 2 & 3	2.7.1	Note	2.10.3.2	Note 2	2.10.5.13	Note 3	3.2.1.1	Note	3.2.4	Note 3.	2.5.1	Note 2	4.3.6	Note 1 & 2	4.7	Note 4	4.7.2.2	Note	4.7.3.1	Note 2	5.1.7.1	Note 3 & 4	5.3.7	Note 1	6	Note 2 & 5	6.1.2.1	Note 2	6.1.2.2	Note	6.2.2	Note 6.	2.2.1	Note 2	6.2.2.2	Note	7.1	Note 3	7.2	Note	7.3	Note 1 & 2	G.2.1	Note 2	Annex H	Note 2			Pass
1.4.8	Note 2	1.5.1	Note 2 & 3	1.5.7.1	Note																																																																					
1.5.8	Note 2	1.5.9.4	Note	1.7.2.1	Note 4, 5 & 6																																																																					
2.2.3	Note	2.2.4	Note	2.3.2	Note																																																																					
2.3.2.1	Note 2	2.3.4	Note 2	2.6.3.3	Note 2 & 3																																																																					
2.7.1	Note	2.10.3.2	Note 2	2.10.5.13	Note 3																																																																					
3.2.1.1	Note	3.2.4	Note 3.	2.5.1	Note 2																																																																					
4.3.6	Note 1 & 2	4.7	Note 4	4.7.2.2	Note																																																																					
4.7.3.1	Note 2	5.1.7.1	Note 3 & 4	5.3.7	Note 1																																																																					
6	Note 2 & 5	6.1.2.1	Note 2	6.1.2.2	Note																																																																					
6.2.2	Note 6.	2.2.1	Note 2	6.2.2.2	Note																																																																					
7.1	Note 3	7.2	Note	7.3	Note 1 & 2																																																																					
G.2.1	Note 2	Annex H	Note 2																																																																							
1.3.Z1	<p>Add the following subclause:</p> <p>1.3.Z1 Exposure to excessive sound pressure</p> <p>The apparatus shall be so designed and constructed as to present no danger when used for its intended purpose, either in normal operating conditions or under fault conditions, particularly providing protection against exposure to excessive sound pressures from headphones or earphones.</p> <p>NOTE Z1 A new method of measurement is described in EN 50332-1, Sound system equipment: Headphones and earphones associated with portable audio equipment - Maximum sound pressure level measurement methodology and limit considerations - Part 1: General method for “one package equipment”, and in EN 50332-2, Sound system equipment: Headphones and earphones associated with portable audio equipment - Maximum sound pressure level measurement methodology and limit considerations - Part 2: Guidelines to associate sets with headphones coming from different manufacturers.</p>	N.A.																																																																								

1.5.1	<p>Add the following NOTE:</p> <p>NOTE Z1 The use of certain substances in electrical and electronic equipment is restricted within the EU: see Directive 2002/95/EC</p>	N.A.									
1.7.2.1	<p>Add the following NOTE:</p> <p>NOTE Z1 In addition, the instructions shall include, as far as applicable, a warning that excessive sound pressure from earphones and headphones can cause hearing loss</p>	N.A.									
2.7.1	<p>Replace the subclause as follows:</p> <p>Basic requirements</p> <p>To protect against excessive current, short-circuits and earth faults in PRIMARY CIRCUITS, protective devices shall be included either as integral parts of the equipment or as parts of the building installation, subject to the following, a), b) and c):</p> <p>a) except as detailed in b) and c), protective devices necessary to comply with the requirements of 5.3 shall be included as parts of the equipment;</p> <p>b) for components in series with the mains input to the equipment such as the supply cord, appliance coupler, r.f.i. filter and switch, short-circuit and earth fault protection may be provided by protective devices in the building installation;</p> <p>c) it is permitted for PLUGGABLE EQUIPMENT TYPE B or PERMANENTLY CONNECTED EQUIPMENT, to rely on dedicated overcurrent and short-circuit protection in the building installation, provided that the means of protection, e.g. fuses or circuit breakers, is fully specified in the installation instructions.</p> <p>If reliance is placed on protection in the building installation, the installation instructions shall so state, except that for PLUGGABLE EQUIPMENT TYPE A the building installation shall be regarded as providing protection in accordance with the rating of the wall socket outlet.</p>	N.A.									
2.7.2	<p>This subclause has been declared 'void'.</p>	N.A.									
3.2.3	<p>Delete the NOTE in Table 3A, and delete also in this table the conduit sizes in parentheses.</p>	N.A.									
3.2.5.1	<p>Replace "60245 IEC 53" by "H05 RR-F"; "60227 IEC 52" by "H03 VV-F or H03 VVH2-F"; "60227 IEC 53" by "H05 VV-F or H05 VVH2-F2".</p> <p>In Table 3B, replace the first four lines by the following:</p> <table border="0" data-bbox="384 1339 1230 1435"> <tr> <td> Up to and including 6</td> <td> 0,75^{a)}</td> <td> </td> </tr> <tr> <td> Over 6 up to and including 10</td> <td> 0,75^{b)}</td> <td> 1,0</td> </tr> <tr> <td> Over 10 up to and including 16</td> <td> 1,0^{c)}</td> <td> 1,5</td> </tr> </table> <p>In the conditions applicable to Table 3B delete the words "in some countries" in condition a).</p> <p>In NOTE 1, applicable to Table 3B, delete the second sentence.</p>	Up to and including 6	0,75 ^{a)}		Over 6 up to and including 10	0,75 ^{b)}	1,0	Over 10 up to and including 16	1,0 ^{c)}	1,5	N.A.
Up to and including 6	0,75 ^{a)}										
Over 6 up to and including 10	0,75 ^{b)}	1,0									
Over 10 up to and including 16	1,0 ^{c)}	1,5									
3.3.4	<p>In table 3D, delete the fourth line: conductor sizes for 10 to 13 A, and replace with the following:</p> <table border="0" data-bbox="384 1644 1158 1675"> <tr> <td> Over 10 up to and including 16</td> <td> 1,5 to 2,5</td> <td> 1,5 to 4</td> <td> </td> </tr> </table> <p>Delete the fifth line – conductor sizes for 13 to 16 A.</p>	Over 10 up to and including 16	1,5 to 2,5	1,5 to 4		N.A.					
Over 10 up to and including 16	1,5 to 2,5	1,5 to 4									
4.3.13.6	<p>Add the following NOTE:</p> <p>NOTE Z1 Attention is drawn to 1999/519/EC: Council Recommendation on the limitation of exposure of the general public to electromagnetic fields 0 Hz to 300 GHz. Standards taking into account this Recommendation which demonstrate compliance with the applicable EU Directive are indicated in the OJEC.</p>	N.A.									


Annex H	<p>Replace the last paragraph of this annex by:</p> <p>At any point 10 cm from the surface of the OPERATOR ACCESS AREA, the dose rate shall not exceed 1 $\mu\text{Sv/h}$ (0,1 mR/h) (see NOTE). Account is taken of the background level.</p> <p>Replace the notes as follows:</p> <p>NOTE These values appear in Directive 96/29/Euratom.</p> <p>Delete NOTE 2.</p>	N.A.
Biblio-graphy	Additional EN standards.	—

ZA	NORMATIVE REFERENCES TO INTERNATIONAL PUBLICATIONS WITH THEIR CORRESPONDING EUROPEAN PUBLICATIONS	N.A.
ZB	SPECIAL NATIONAL CONDITIONS	N.A.
1.2.4.1	In Denmark , certain types of Class I appliances (see 3.2.1.1) may be provided with a plug not establishing earthing conditions when inserted into Danish socket-outlets.	N.A.
1.5.7.1	In Finland, Norway and Sweden , resistors bridging BASIC INSULATION in CLASS I PLUGGABLE EQUIPMENT TYPE A must comply with the requirements in 1.5.7.2.	N.A.
1.5.8	In Norway , due to the IT power system used (see annex V, Figure V.7), capacitors are required to be rated for the applicable line-to-line voltage (230 V).	N.A.
1.5.9.4	In Finland, Norway and Sweden , the third dashed sentence is applicable only to equipment as defined in 6.1.2.2 of this annex.	N.A.
1.7.2.1	<p>In Finland, Norway and Sweden, CLASS I PLUGGABLE EQUIPMENT TYPE A intended for connection to other equipment or a network shall, if safety relies on connection to protective earth or if surge suppressors are connected between the network terminals and accessible parts, have a marking stating that the equipment must be connected to an earthed mains socket-outlet.</p> <p>The marking text in the applicable countries shall be as follows:</p> <p>In Finland: "Laite on liitettävä suojamaadoituskaskettimilla varustettuun pistorasiaan"</p> <p>In Norway: "Apparatet må tilkoples jordet stikkontakt"</p> <p>In Sweden: "Apparaten skall anslutas till jordat uttag"</p>	N.A.
1.7.5	In Denmark , socket-outlets for providing power to other equipment shall be in accordance with the Heavy Current Regulations, Section 107-2-D1, Standard Sheet DK 1-3a, DK 1-5a or DK 1-7a, when used on Class I equipment. For STATIONARY EQUIPMENT the socket-outlet shall be in accordance with Standard Sheet DK 1-1b or DK 1-5a.	N.A.
2.2.4	In Norway , for requirements see 1.7.2.1, 6.1.2.1 and 6.1.2.2 of this annex.	N.A.
2.3.2	In Finland, Norway and Sweden there are additional requirements for the insulation. See 6.1.2.1 and 6.1.2.2 of this annex.	N.A.
2.3.4	In Norway , for requirements see 1.7.2.1, 6.1.2.1 and 6.1.2.2 of this annex.	N.A.
2.6.3.3	In the United Kingdom , the current rating of the circuit shall be taken as 13 A, not 16 A.	N.A.
2.7.1	In the United Kingdom , to protect against excessive currents and short-circuits in the PRIMARY CIRCUIT of DIRECT PLUG-IN EQUIPMENT, tests according to 5.3 shall be conducted, using an external protective device rated 30 A or 32 A. If these tests fail, suitable protective devices shall be included as integral parts of the DIRECT PLUG-IN EQUIPMENT, so that the requirements of 5.3 are met.	N.A.

2.10.5.13	In Finland, Norway and Sweden , there are additional requirements for the insulation, see 6.1.2.1 and 6.1.2.2 of this annex.	N.A.
3.2.1.1	<p>In Switzerland, supply cords of equipment having a RATED CURRENT not exceeding 10 A shall be provided with a plug complying with SEV 1011 or IEC 60884-1 and one of the following dimension sheets:</p> <p>SEV 6532-2.1991 Plug Type 15 3P+N+PE 250/400 V, 10 A SEV 6533-2.1991 Plug Type 11 L+N 250 V, 10 A SEV 6534-2.1991 Plug Type 12 L+N+PE 250 V, 10 A</p> <p>In general, EN 60309 applies for plugs for currents exceeding 10 A. However, a 16 A plug and socket-outlet system is being introduced in Switzerland, the plugs of which are according to the following dimension sheets, published in February 1998:</p> <p>SEV 5932-2.1998 Plug Type 25 3L+N+PE 230/400 V, 16 A SEV 5933-2.1998 Plug Type 21 L+N 250 V, 16 A SEV 5934-2.1998 Plug Type 23 L+N+PE 250 V, 16 A</p>	N.A.
3.2.1.1	<p>In Denmark, supply cords of single-phase equipment having a rated current not exceeding 13 A shall be provided with a plug according to the Heavy Current Regulations, Section 107-2-D1.</p> <p>CLASS I EQUIPMENT provided with socket-outlets with earth contacts or which are intended to be used in locations where protection against indirect contact is required according to the wiring rules shall be provided with a plug in accordance with standard sheet DK 2-1a or DK 2-5a.</p> <p>If poly-phase equipment and single-phase equipment having a RATED CURRENT exceeding 13 A is provided with a supply cord with a plug, this plug shall be in accordance with the Heavy Current Regulations, Section 107-2-D1 or EN 60309-2.</p>	N.A.
3.2.1.1	<p>In Spain, supply cords of single-phase equipment having a rated current not exceeding 10 A shall be provided with a plug according to UNE 20315:1994.</p> <p>Supply cords of single-phase equipment having a rated current not exceeding 2,5 A shall be provided with a plug according to UNE-EN 50075:1993.</p> <p>CLASS I EQUIPMENT provided with socket-outlets with earth contacts or which are intended to be used in locations where protection against indirect contact is required according to the wiring rules, shall be provided with a plug in accordance with standard UNE 20315:1994.</p> <p>If poly-phase equipment is provided with a supply cord with a plug, this plug shall be in accordance with UNE-EN 60309-2.</p>	N.A.
3.2.1.1	<p>In the United Kingdom, apparatus which is fitted with a flexible cable or cord and is designed to be connected to a mains socket conforming to BS 1363 by means of that flexible cable or cord and plug, shall be fitted with a 'standard plug' in accordance with Statutory Instrument 1768:1994 - The Plugs and Sockets etc. (Safety) Regulations 1994, unless exempted by those regulations.</p> <p>NOTE 'Standard plug' is defined in SI 1768:1994 and essentially means an approved plug conforming to BS 1363 or an approved conversion plug.</p>	N.A.
3.2.1.1	<p>In Ireland, apparatus which is fitted with a flexible cable or cord and is designed to be connected to a mains socket conforming to I.S. 411 by means of that flexible cable or cord and plug, shall be fitted with a 13 A plug in accordance with Statutory Instrument 525:1997 - National Standards Authority of Ireland (section 28) (13 A Plugs and Conversion Adaptors for Domestic Use) Regulations 1997.</p>	N.A.
3.2.4	In Switzerland , for requirements see 3.2.1.1 of this annex.	N.A.
3.2.5.1	In the United Kingdom , a power supply cord with conductor of 1,25 mm ² is allowed for equipment with a rated current over 10 A and up to and including 13 A.	N.A.

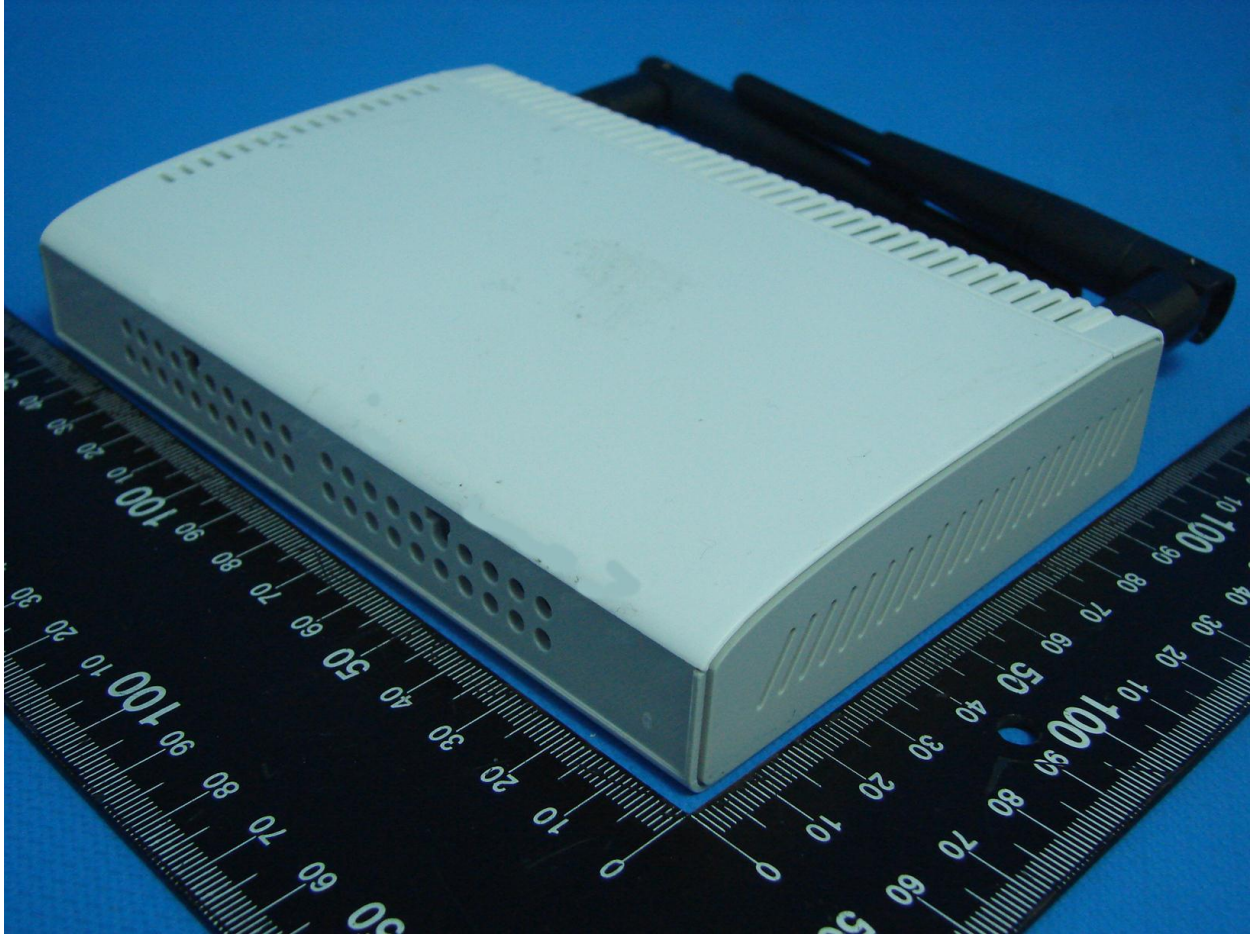
3.3.4	<p>In the United Kingdom, the range of conductor sizes of flexible cords to be accepted by terminals for equipment with a RATED CURRENT of over 10 A up to and including 13 A is:</p> <ul style="list-style-type: none"> • 1,25 mm² to 1,5 mm² nominal cross-sectional area. 	N.A.
4.3.6	<p>In the United Kingdom, the torque test is performed using a socket outlet complying with BS 1363 part 1:1995, including Amendment 1:1997 and Amendment 2:2003 and the plug part of DIRECT PLUG-IN EQUIPMENT shall be assessed to BS 1363: Part 1, 12.1, 12.2, 12.3, 12.9, 12.11, 12.12, 12.13, 12.16 and 12.17, except that the test of 12.17 is performed at not less than 125 °C. Where the metal earth pin is replaced by an Insulated Shutter Opening Device (ISOD), the requirements of clauses 22.2 and 23 also apply.</p>	N.A.
4.3.6	<p>In Ireland, DIRECT PLUG-IN EQUIPMENT is known as plug similar devices. Such devices shall comply with Statutory Instrument 526:1997 - National Standards Authority of Ireland (Section 28) (Electrical plugs, plug similar devices and sockets for domestic use) Regulations, 1997.</p>	N.A.
5.1.7.1	<p>In Finland, Norway and Sweden TOUCH CURRENT measurement results exceeding 3,5 mA r.m.s. are permitted only for the following equipment:</p> <ul style="list-style-type: none"> • STATIONARY PLUGGABLE EQUIPMENT TYPE A that <ul style="list-style-type: none"> - is intended to be used in a RESTRICTED ACCESS LOCATION where equipotential bonding has been applied, for example, in a telecommunication centre; and - has provision for a permanently connected PROTECTIVE EARTHING CONDUCTOR; and - is provided with instructions for the installation of that conductor by a SERVICE PERSON; • STATIONARY PLUGGABLE EQUIPMENT TYPE B; • STATIONARY PERMANENTLY CONNECTED EQUIPMENT. 	N.A.

6.1.2.1	<p>In Finland, Norway and Sweden, add the following text between the first and second paragraph of the compliance clause:</p> <p>If this insulation is solid, including insulation forming part of a component, it shall at least consist of either</p> <ul style="list-style-type: none"> - two layers of thin sheet material, each of which shall pass the electric strength test below, or - one layer having a distance through insulation of at least 0,4 mm, which shall pass the electric strength test below. <p>If this insulation forms part of a semiconductor component (e.g. an optocoupler), there is no distance through insulation requirement for the insulation consisting of an insulating compound completely filling the casing, so that CLEARANCES and CREEPAGE DISTANCES do not exist, if the component passes the electric strength test in accordance with the compliance clause below and in addition</p> <ul style="list-style-type: none"> -passes the tests and inspection criteria of 2.10.11 with an electric strength test of 1,5 kV multiplied by 1,6 (the electric strength test of 2.10.10 shall be performed using 1,5 kV), and -is subject to ROUTINE TESTING for electric strength during manufacturing, using a test voltage of 1,5 kV. It is permitted to bridge this insulation with a capacitor complying with EN 132400:1994, subclass Y2. <p>A capacitor classified Y3 according to EN 132400:1994, may bridge this insulation under the following conditions:</p> <ul style="list-style-type: none"> -the insulation requirements are satisfied by having a capacitor classified Y3 as defined by EN 132400, which in addition to the Y3 testing, is tested with an impulse test of 2,5 kV defined in EN 60950-1:2006, 6.2.2.1; -the additional testing shall be performed on all the test specimens as described in EN 132400; -the impulse test of 2,5 kV is to be performed before the endurance test in EN 132400, in the sequence of tests as described in EN 132400. 	N.A.
6.1.2.2	<p>In Finland, Norway and Sweden, the exclusions are applicable for PERMANENTLY CONNECTED EQUIPMENT, PLUGGABLE EQUIPMENT TYPE B and equipment intended to be used in a RESTRICTED ACCESS LOCATION where equipotential bonding has been applied, e.g. in a telecommunication centre, and which has provision for a permanently connected PROTECTIVE EARTHING CONDUCTOR and is provided with instructions for the installation of that conductor by a SERVICE PERSON.</p>	N.A.
7.2	<p>In Finland, Norway and Sweden, for requirements see 6.1.2.1 and 6.1.2.2 of this annex. The term TELECOMMUNICATION NETWORK in 6.1.2 being replaced by the term CABLE DISTRIBUTION SYSTEM.</p>	N.A.
7.3	<p>In Norway and Sweden, there are many buildings where the screen of the coaxial cable is normally not connected to the earth in the building installation.</p>	N.A.
7.3	<p>In Norway, for installation conditions see EN 60728-11:2005.</p>	N.A.
ZC	<p>A-DEVIATIONS (informative)</p>	N.A.
1.5.1	<p>Sweden (Ordinance 1990:944)</p> <p>Add the following:</p> <p>NOTE In Sweden, switches containing mercury are not permitted.</p>	N.A.

1.5.1	<p>Switzerland (Ordinance on environmentally hazardous substances SR 814.081, Annex 1.7, Mercury - Annex 1.7 of SR 814.81 applies for mercury.)</p> <p>Add the following:</p> <p>NOTE In Switzerland, switches containing mercury such as thermostats, relays and level controllers are not allowed.</p>	N.A.
1.7.2.1	<p>Denmark (Heavy Current Regulations)</p> <p>Supply cords of CLASS I EQUIPMENT, which is delivered without a plug, must be provided with a visible tag with the following text:</p> <p style="text-align: center;">Vigtigt! Lederen med grøn/gul isolation må kun tilsluttes en klemme mærket</p> <p style="text-align: center;"> eller </p> <p>If essential for the safety of the equipment, the tag must in addition be provided with a diagram, which shows the connection of the other conductors, or be provided with the following text:</p> <p>“For tilslutning af de øvrige ledere, se medfølgende installationsvejledning.”</p>	N.A.
1.7.2.1	<p>Germany (Gesetz über technische Arbeitsmittel und Verbraucherprodukte (Geräte- und Produktsicherheitsgesetz – GPSG) [Law on technical labour equipment and consumer products], of 6th January 2004, Section 2, Article 4, Clause (4), Item 2).</p> <p>If for the assurance of safety and health certain rules during use, amending or maintenance of a technical labour equipment or readymade consumer product are to be followed, a manual in German language has to be delivered when placing the product on the market.</p> <p>Of this requirement, rules for use even only by SERVICE PERSONS are not exempted.</p>	N.A.
1.7.5	<p>Denmark (Heavy Current Regulations)</p> <p>With the exception of CLASS II EQUIPMENT provided with a socket outlet in accordance with the Heavy Current Regulations, Section 107-2-D1, Standard Sheet DK 1-4a, CLASS II EQUIPMENT shall not be fitted with socket-outlets for providing power to other equipment.</p>	N.A.
1.7.13	<p>Switzerland (Ordinance on chemical hazardous risk reduction SR 814.81, Annex 2.15 Batteries)</p> <p>Annex 2.15 of SR 814.81 applies for batteries.</p>	N.A.
5.1.7.1	<p>Denmark (Heavy Current Regulations, Chapter 707, clause 707.4)</p> <p>TOUCH CURRENT measurement results exceeding 3,5 mA r.m.s. are permitted only for PERMANENTLY CONNECTED EQUIPMENT and PLUGGABLE EQUIPMENT TYPE B.</p>	N.A.

Appendix – Photo

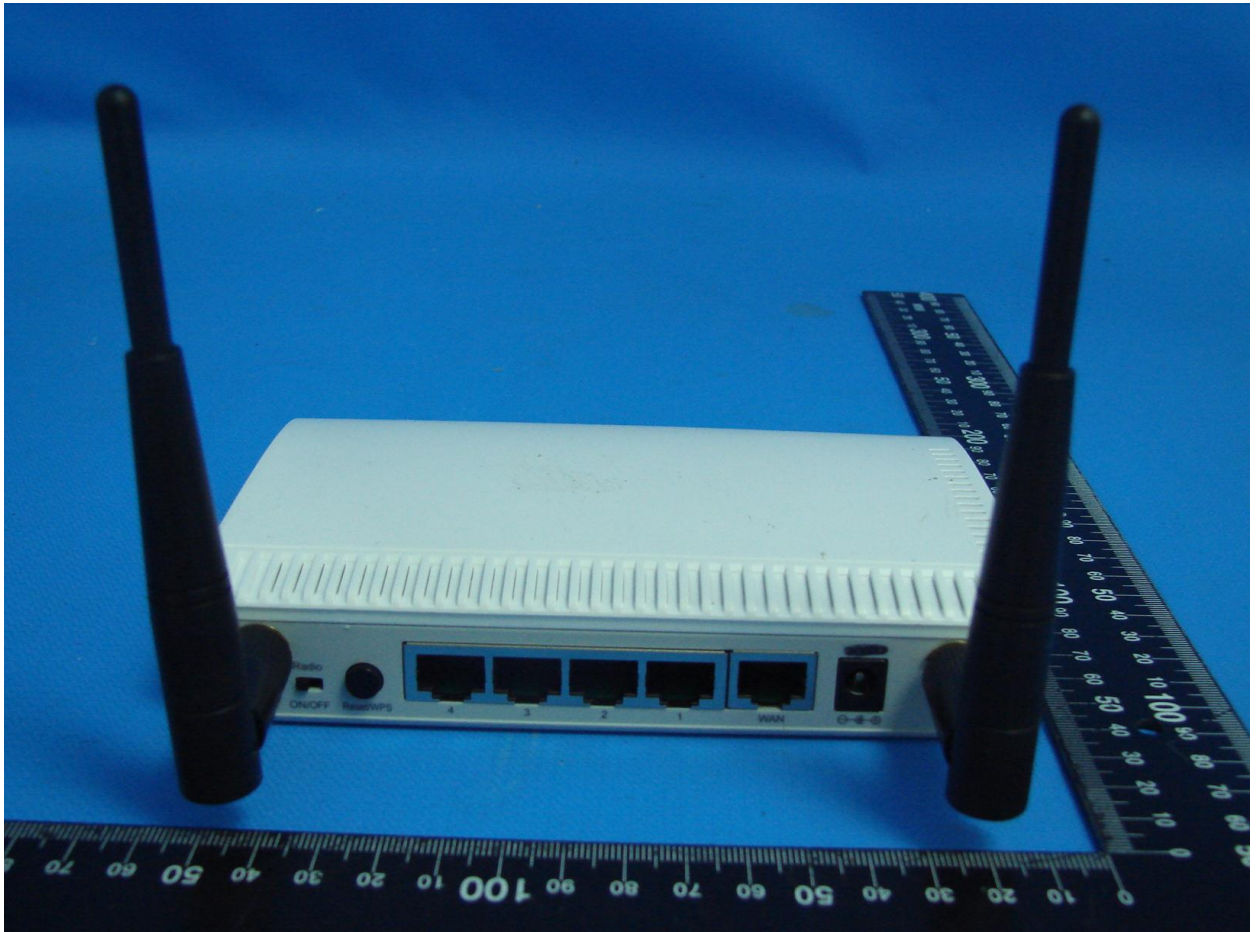
Type 1



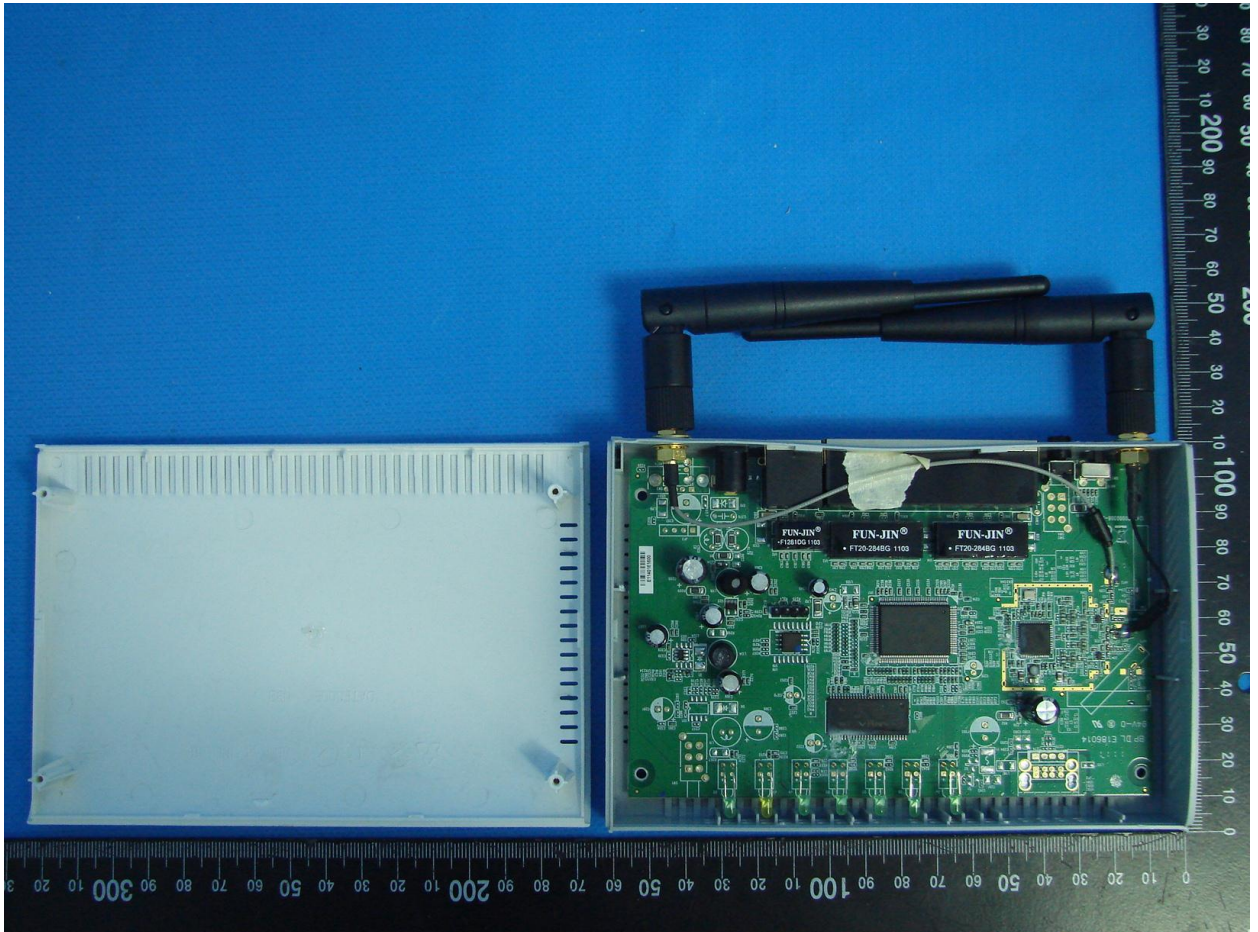
Appendix – Photo



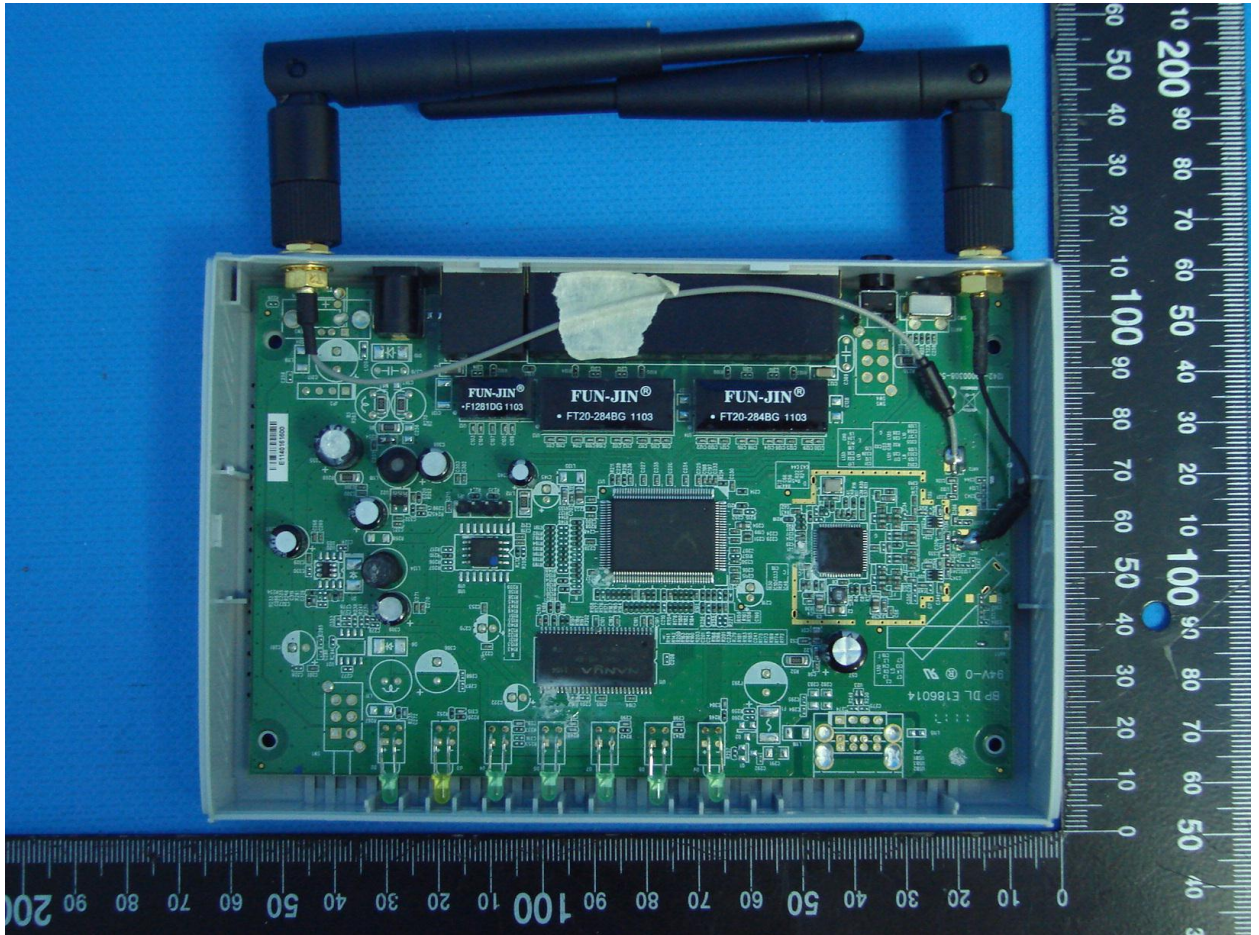
Appendix – Photo



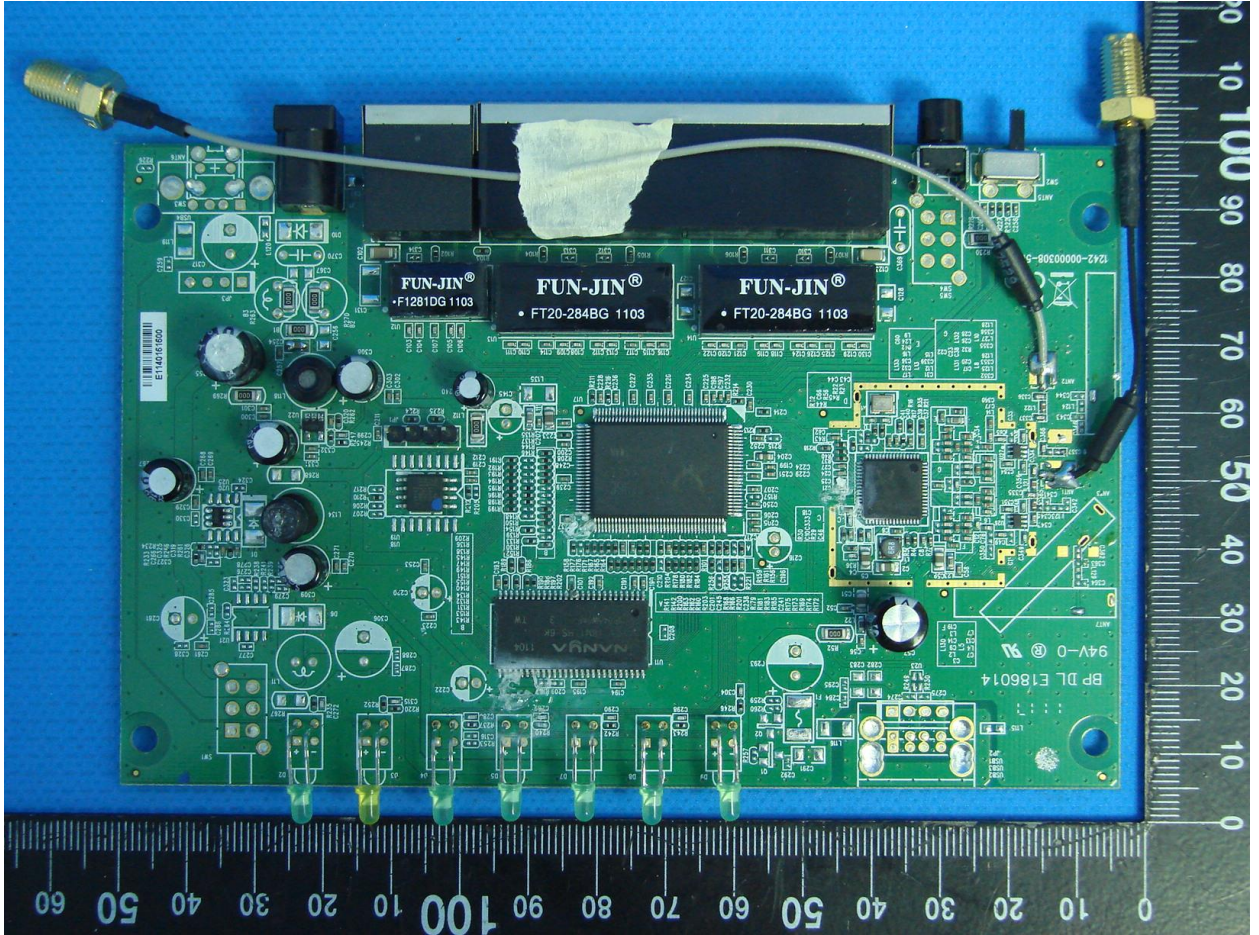
Appendix – Photo



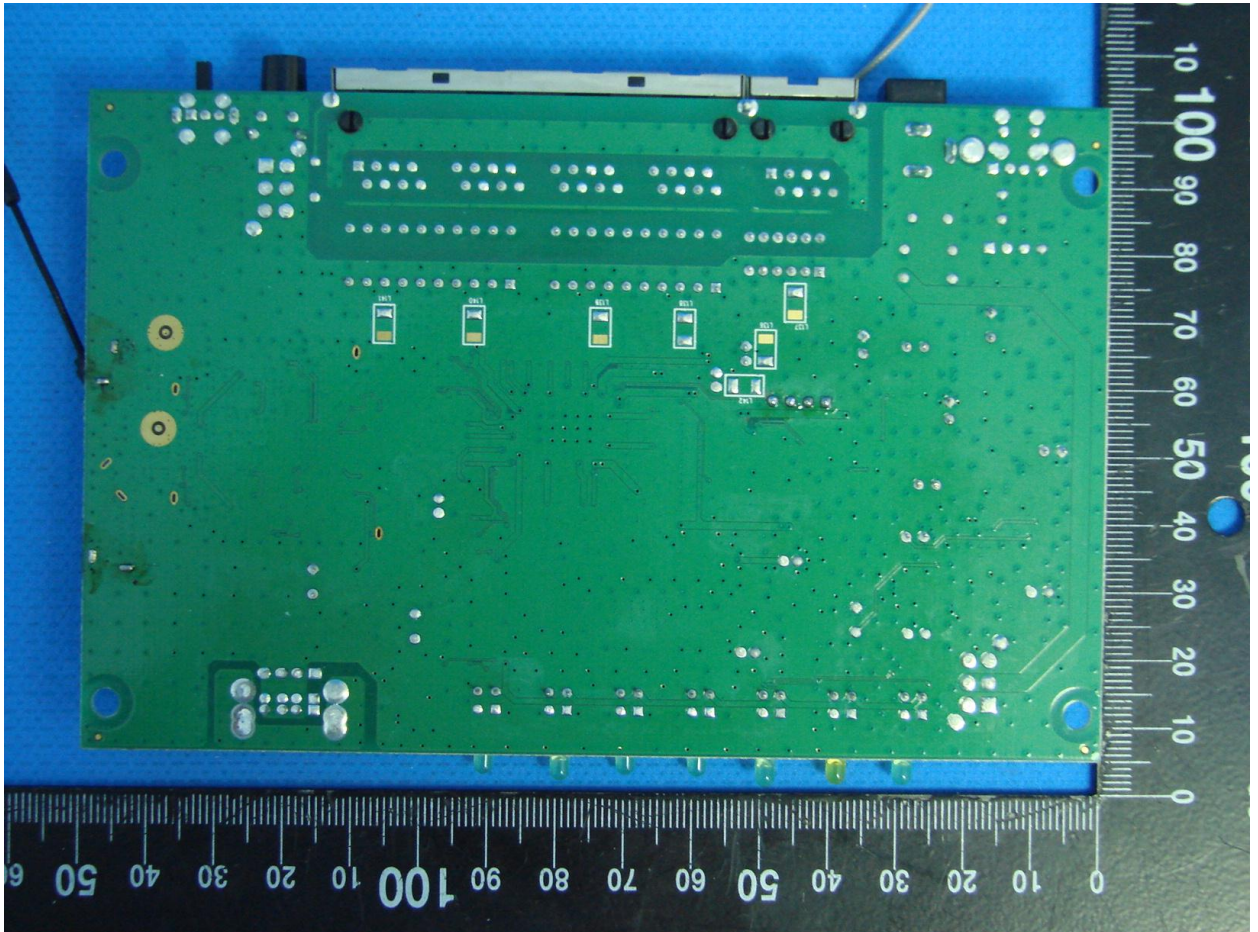
Appendix – Photo



Appendix – Photo



Appendix – Photo



Appendix – Photo

Type 2



Appendix – Photo



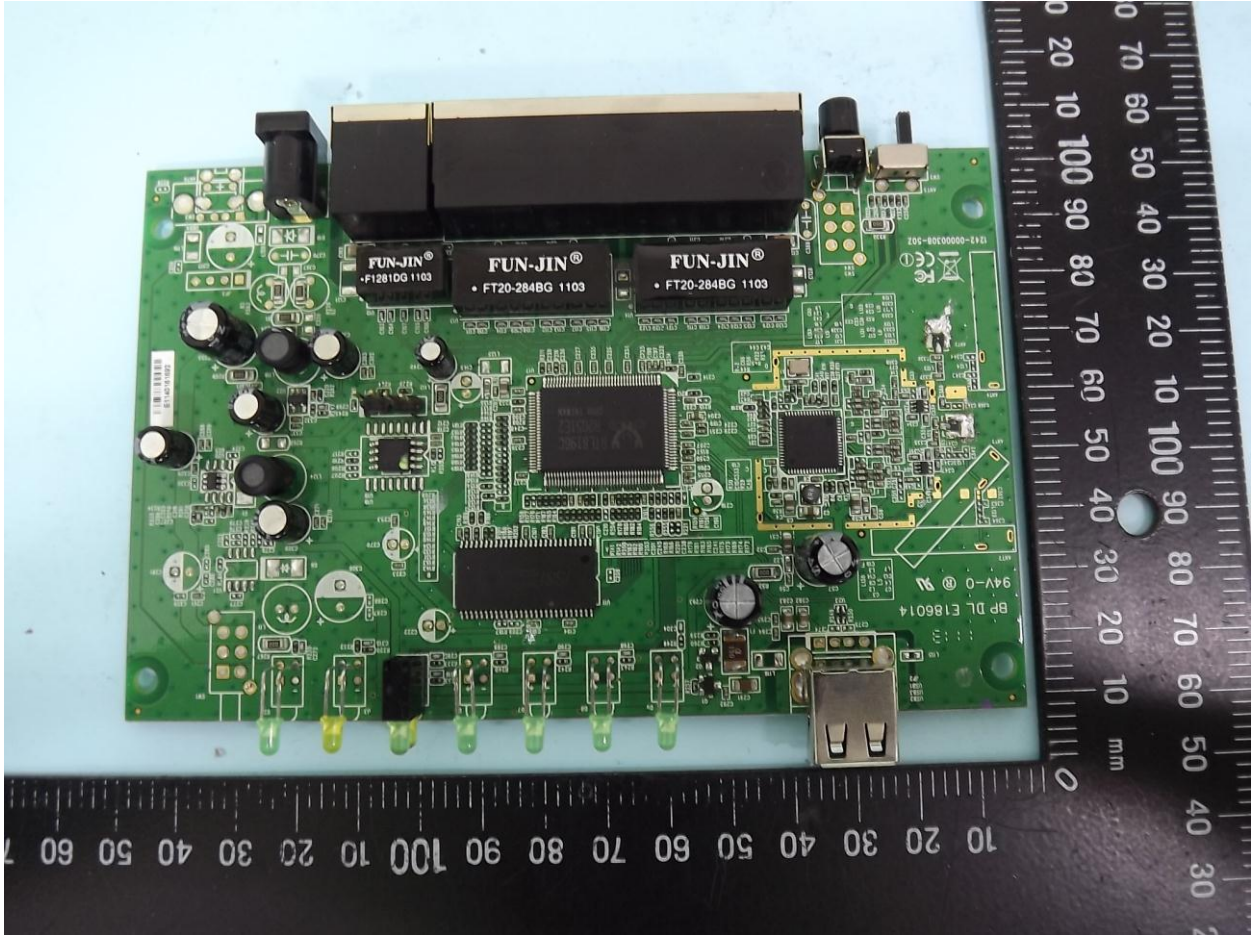
Appendix – Photo



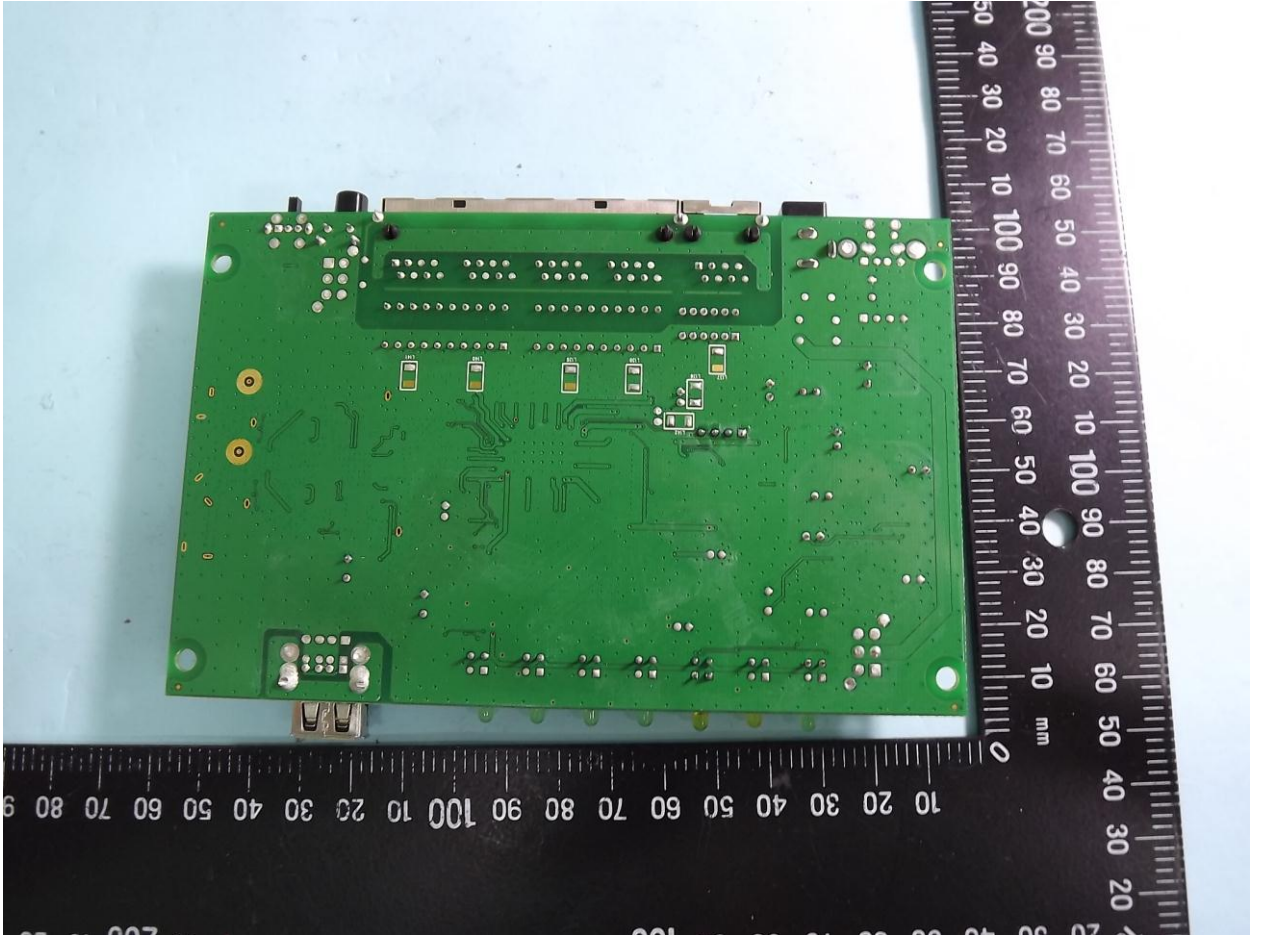
Appendix – Photo



Appendix – Photo



Appendix – Photo



Appendix – Photo

Type 2 (different antenna)



Appendix – Photo



Appendix – Photo



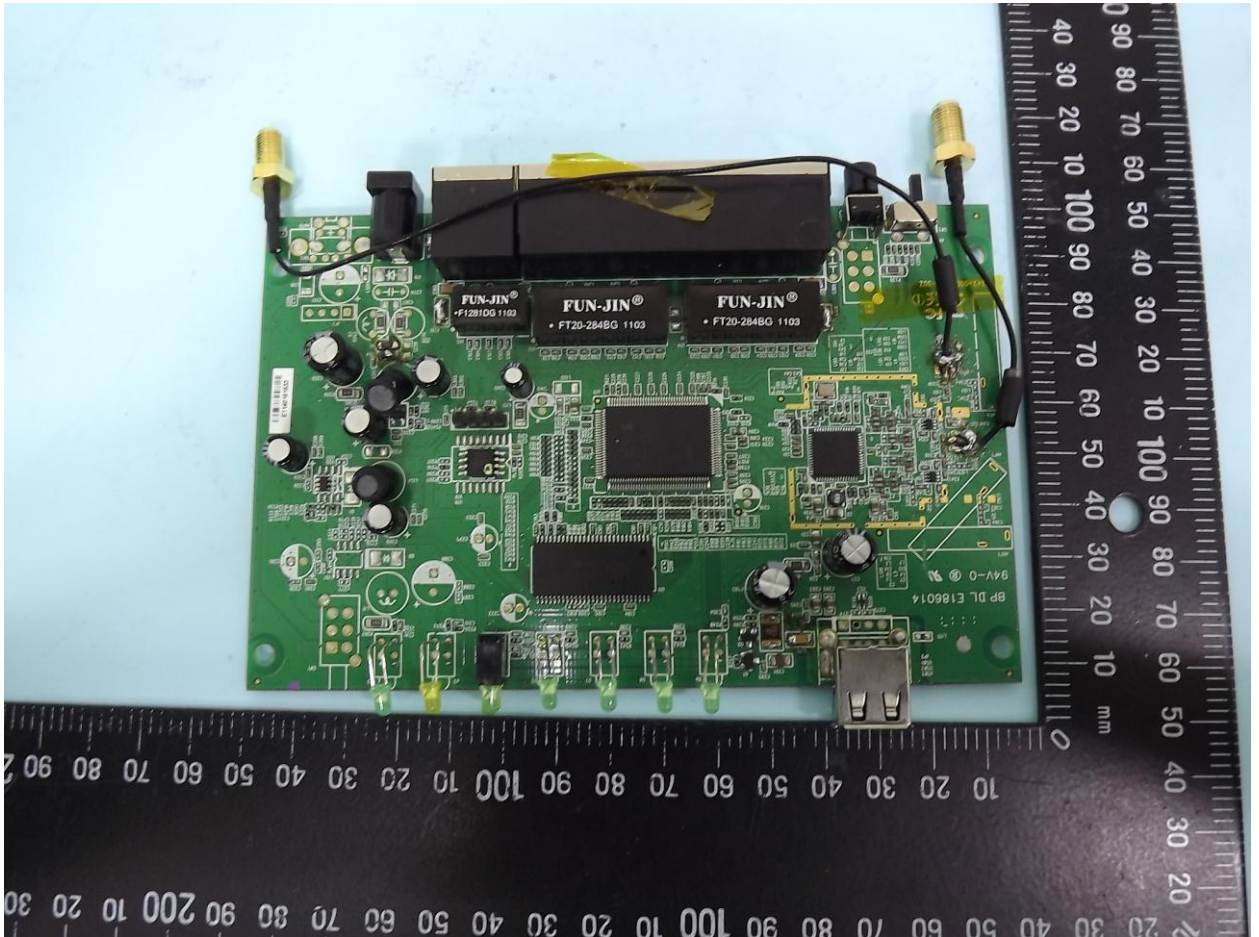
Appendix – Photo



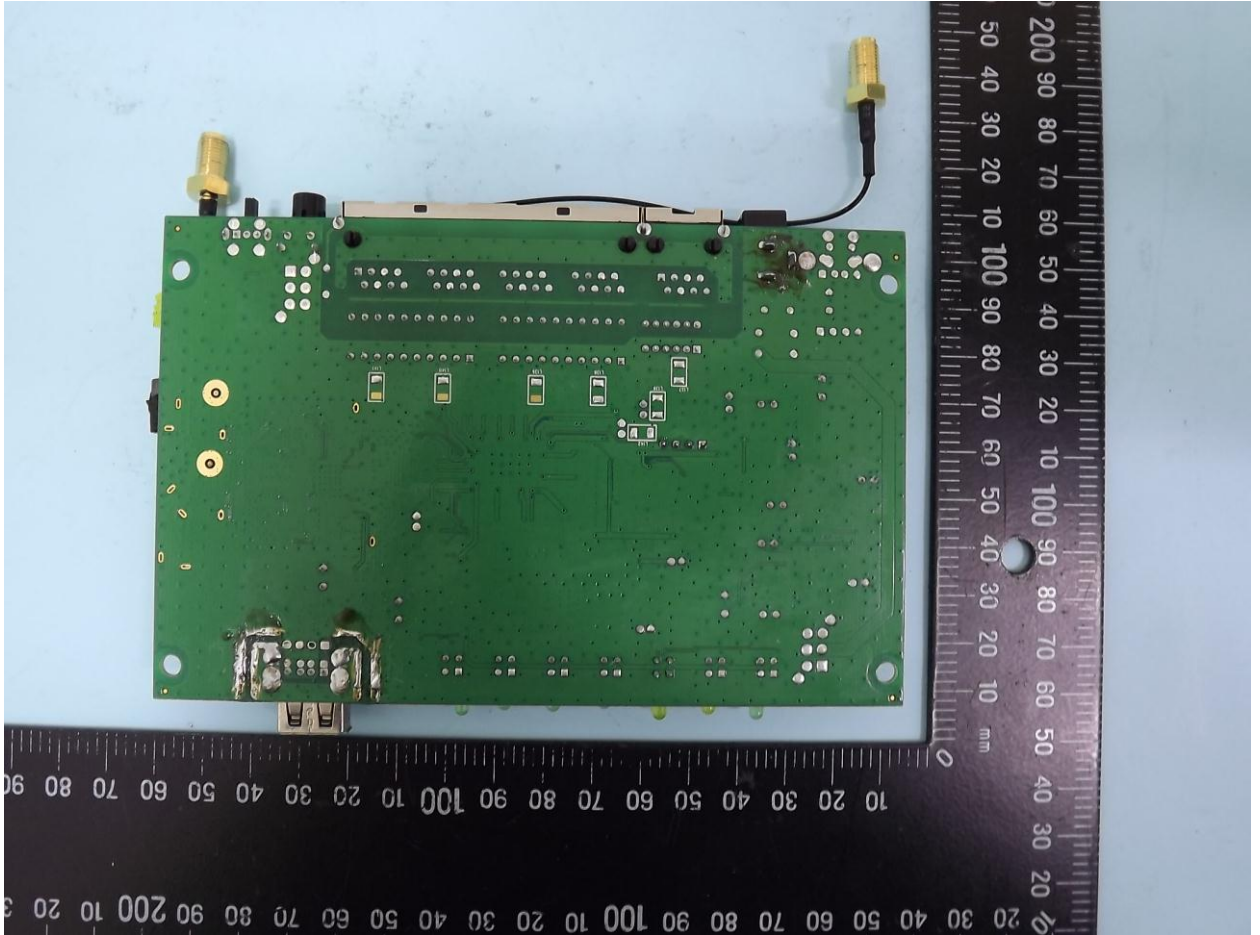
Appendix – Photo



Appendix – Photo

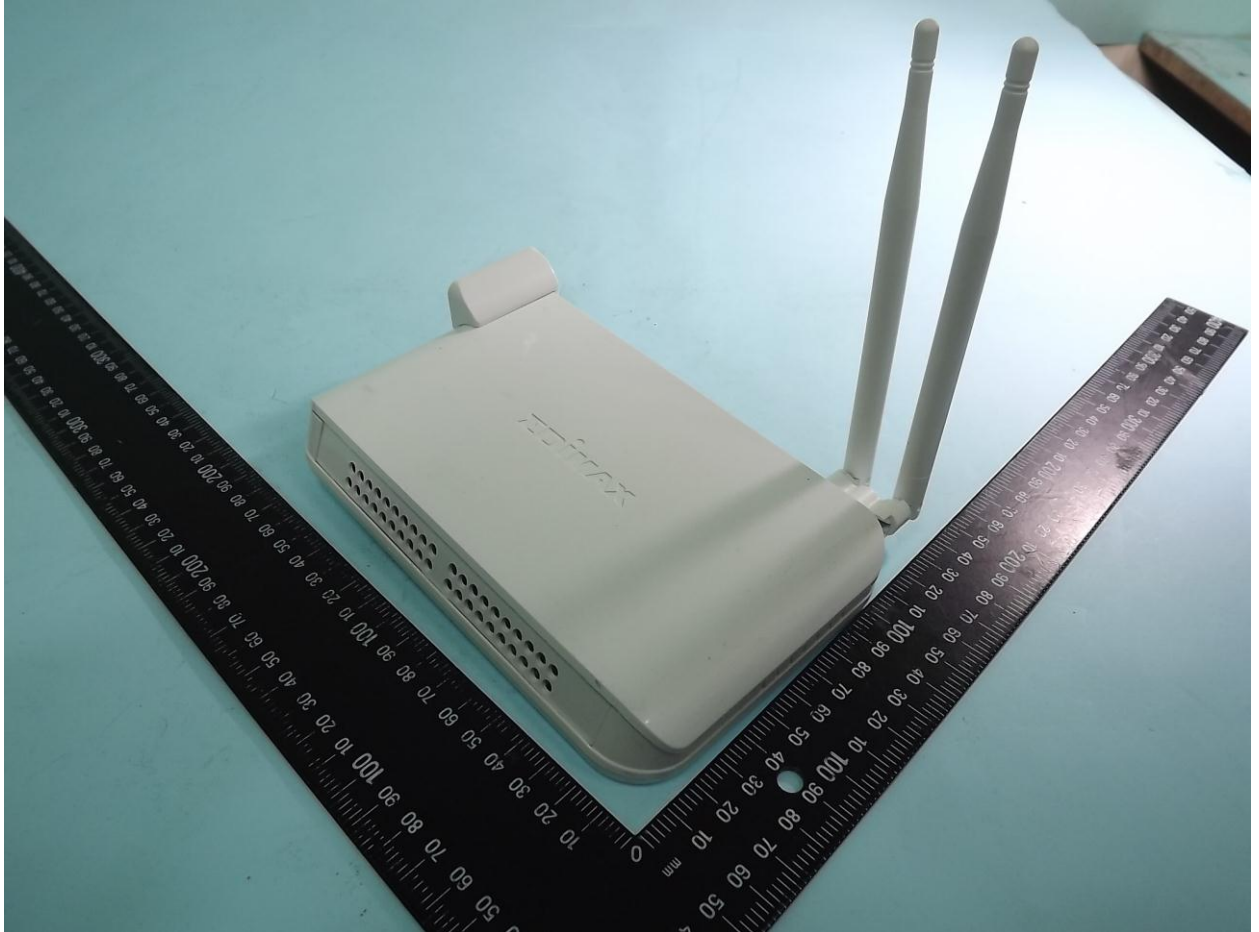


Appendix – Photo

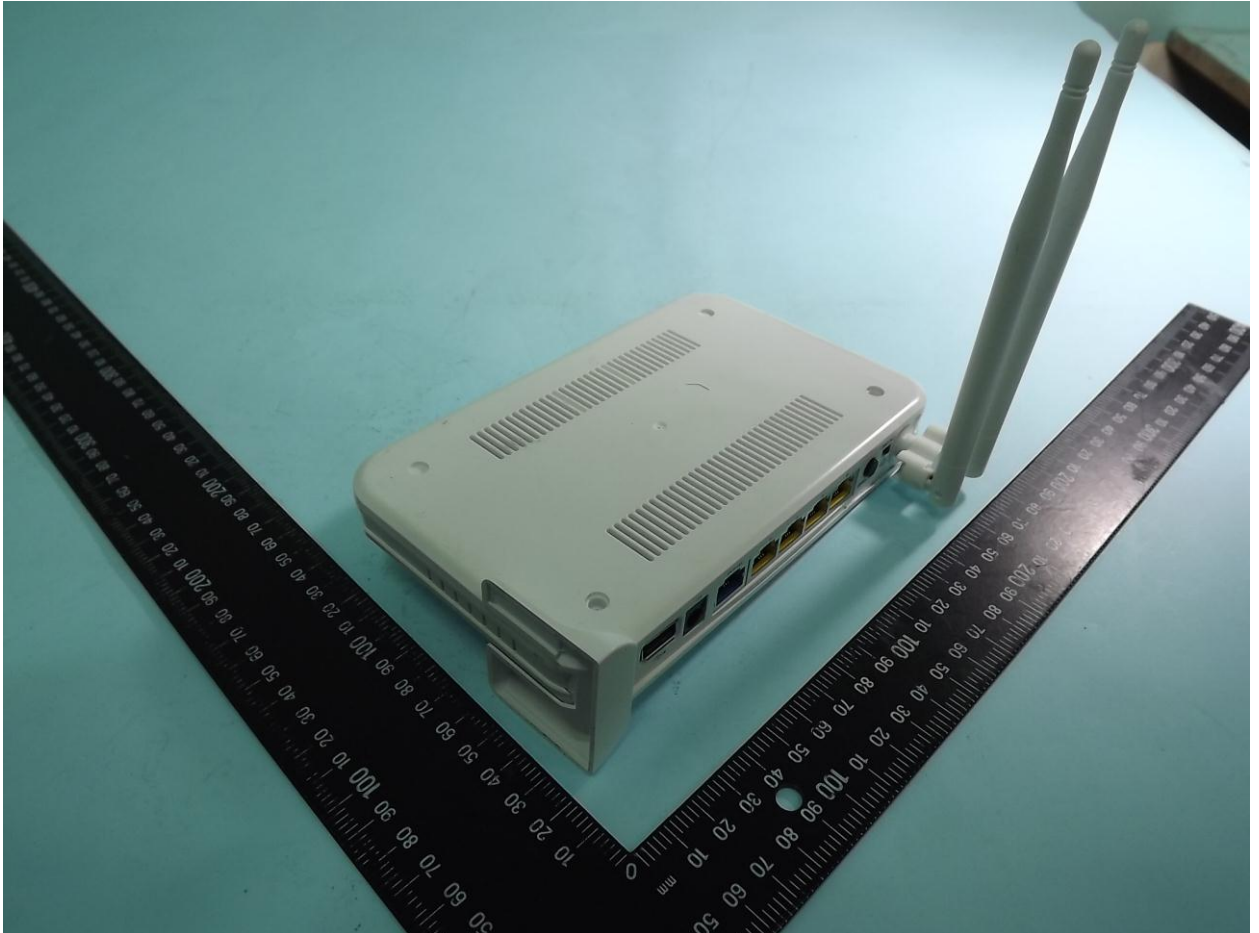


Appendix – Photo

Type 3



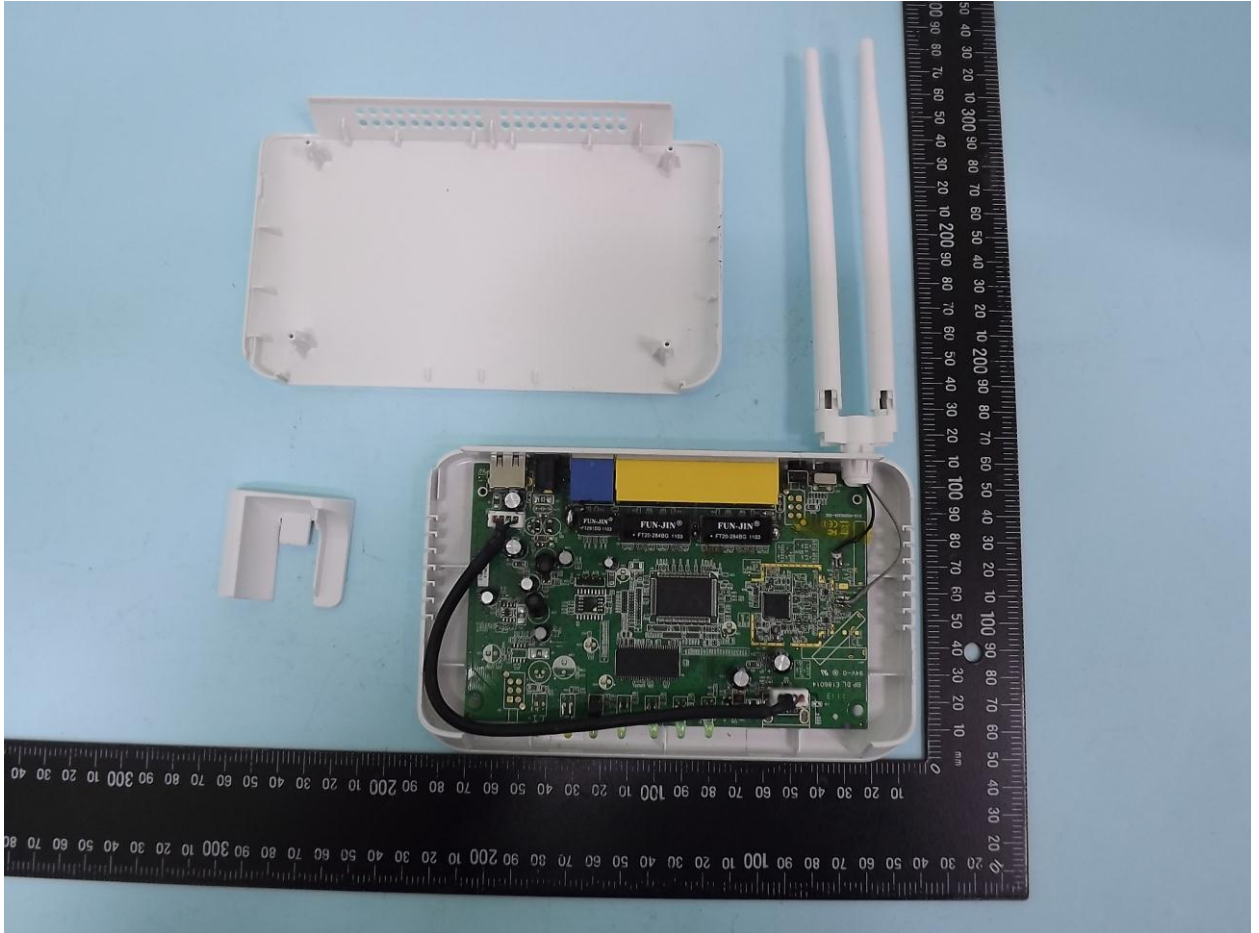
Appendix – Photo



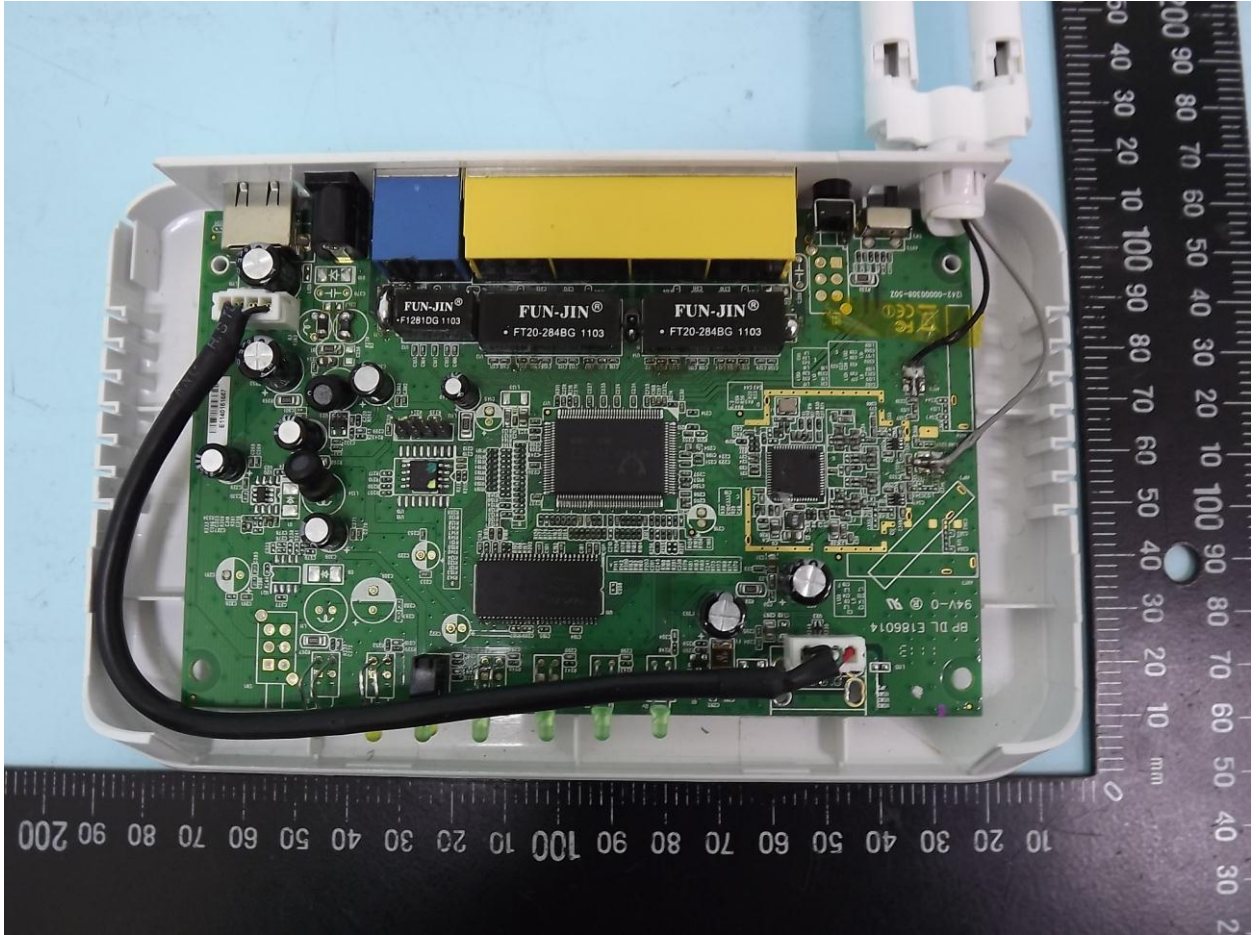
Appendix – Photo



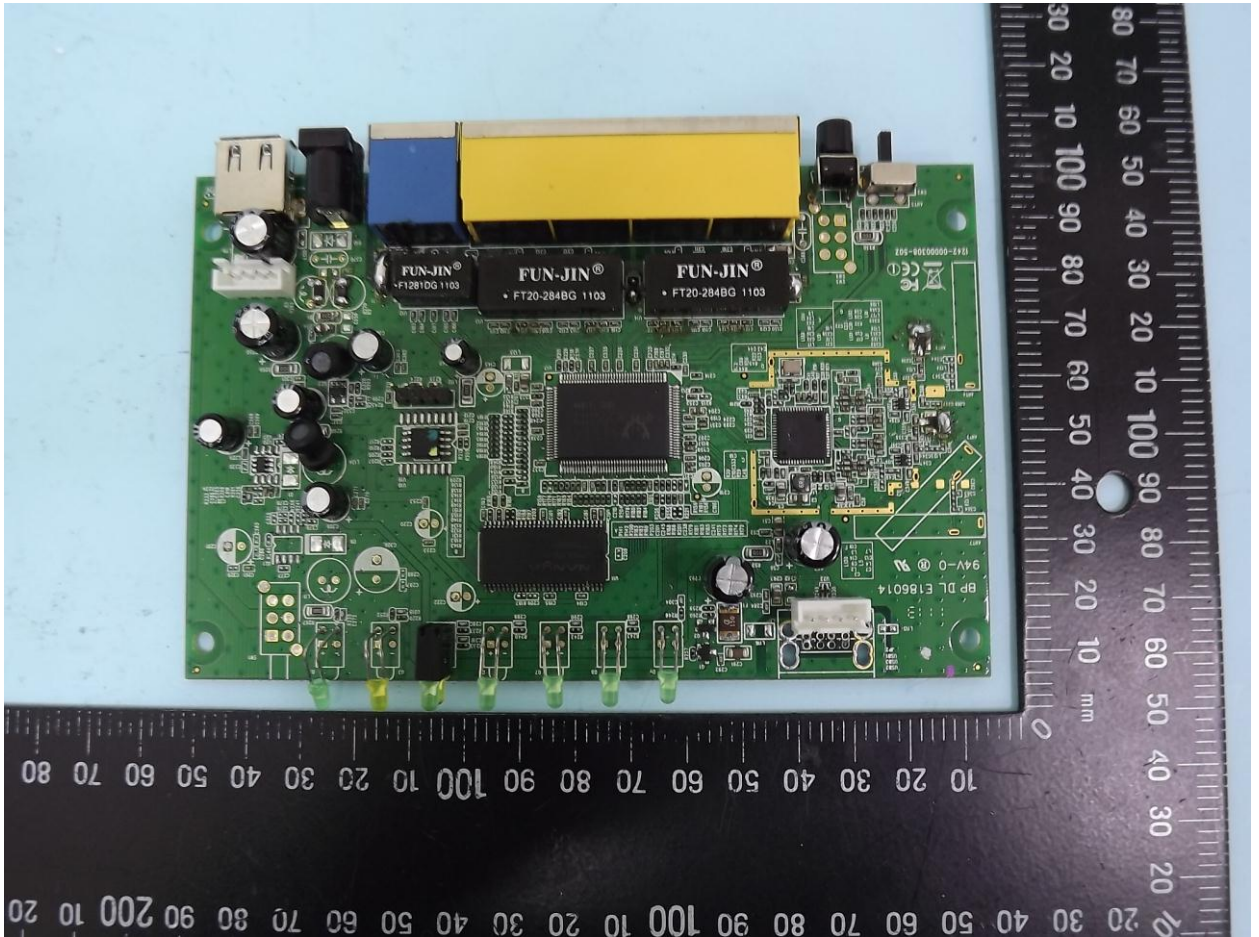
Appendix – Photo



Appendix – Photo



Appendix – Photo



Appendix – Photo

