

# TOTO®

Perfection by Design

## Battery Powered (6V,DC) Sensor Urinal Flush Valve, Exposed

To be specified:

### Sensor Urinal Flush Valve

- Valve Only, Nickel Chrome Plated Finish
  - Left and Right Rough - TEU1DNC
- Complete Set, Nickel Chrome Plated Finish
  - Left and Right Rough - TEU1DNC-12 (3/4" V.B.)
  - Left and Right Rough - TEU1DNC-22 (1 1/4" V.B.)

Complete set supplied with:

- Vacuum Breaker & Angle Stop Set - VB9CP-12
  - 3/4" Angle Stop - 10077t4
  - 3/4" Vacuum Breaker - 10075t2
  - Spud Nut & Escutcheon - 71051Nt5
  - Sweat Solder Kit - TH559EDVSJ1
- Vacuum Breaker & Angle Stop Set - VB9CP-22
  - 3/4" Angle Stop - 10077t4
  - 1 1/4" Vacuum Breaker - 10075t5
  - Spud Nut & Escutcheon - 71051Nt7
  - Sweat Solder Kit - TH559EDVSJ1

Meets the American Disabilities Act Guidelines and ANSI A117.1 requirements for people with disabilities.



TEU1DNC-12

## AUTOMATIC FLUSHING SYSTEM

TOTO, the world leader in advanced plumbing systems, provides sensor operated flush valves for facilities demanding the finest sanitation equipment for busy restrooms. "Hands-free" technology effectively reduces unsanitary conditions from unflushed fixtures.

## SUPERIOR PISTON VALVE

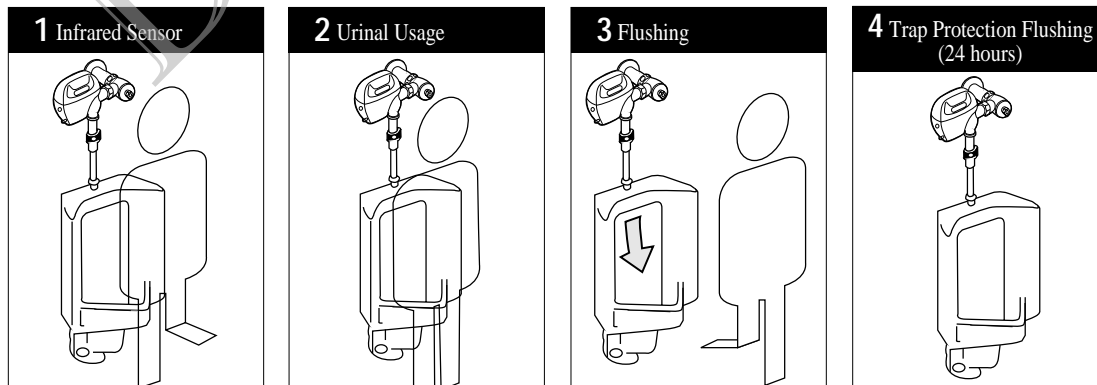
TOTO's piston valve technology is a marked improvement over the traditional "rubber diaphragm" valve. Not only does the longer piston travel and self-cleaning screen reduce common problems like sticking and flooding, but the piston itself will not warp or mis-seal, significantly reducing repair and maintenance cost.

## FUZZY LOGIC MICROPROCESSOR

"Fuzzy" logic controlled flushing offers the ultimate water conservation without sacrificing performance. The new TOTO urinal flush valves utilize a "fuzzy" logic controlled microprocessor which measures the duration and frequency of use, and flushes an appropriate volume (0.5 - 1.0 gpf). In facilities with periods of frequent use, water conservation is maximized with the use of "fuzzy" logic technology.

## NEUTRAL ROUGH-IN



TOTO's sensor flush valve has neutral rough-in, it can be used as right or left rough-in with no modifications.



Reliance Commercial Line

# Battery Powered(6V,DC) Sensor Urinal Flush Valve, Exposed

## SPECIFICATIONS

<b>Product</b>	TEU1DNC - Valve Only, Left and Right Rough, Chrome Plated Finish TEU1DNC-12 - Complete Set (3/4" V.B.), Left and Right Rough, Chrome Plated Finish TEU1DNC-22 - Complete Set (1 1/4" V.B.), Left and Right Rough, Chrome Plated Finish
<b>Power supply</b>	Four AA alkaline batteries, included. 2 year life, based on 4000 cycles per month
<b>Detection range</b>	Self-adjusting to environment
<b>Detection time</b>	Factory setting at five (5) seconds.
<b>Water supply pipe</b>	3/4" NPT
<b>Discharge quantity</b>	Fuzzy logic adjusted flush volume at 28psi (0.5-1.0 GPF)
<b>Urinal type</b>	Wash down flush design
<b>Trap seal protection</b>	Automatic flushing once every twenty four (24) hours, if not used
<b>Ambient temperature</b>	32°-104°F (0°-40°C)
<b>Supply water pressure</b>	Minimum required water pressure: 15psi(flowing) Maximum water pressure: 125psi*
<b>Warranty</b>	Limited one (1) year warranty on all component parts. Details available upon request.
<b>Listings</b>	 City of Los Angeles  A.S.S.E 1037

These dimensions and specifications are subject to change without notice.  
\*Water pressures over 80 psi are not recommended for most plumbing fixtures.

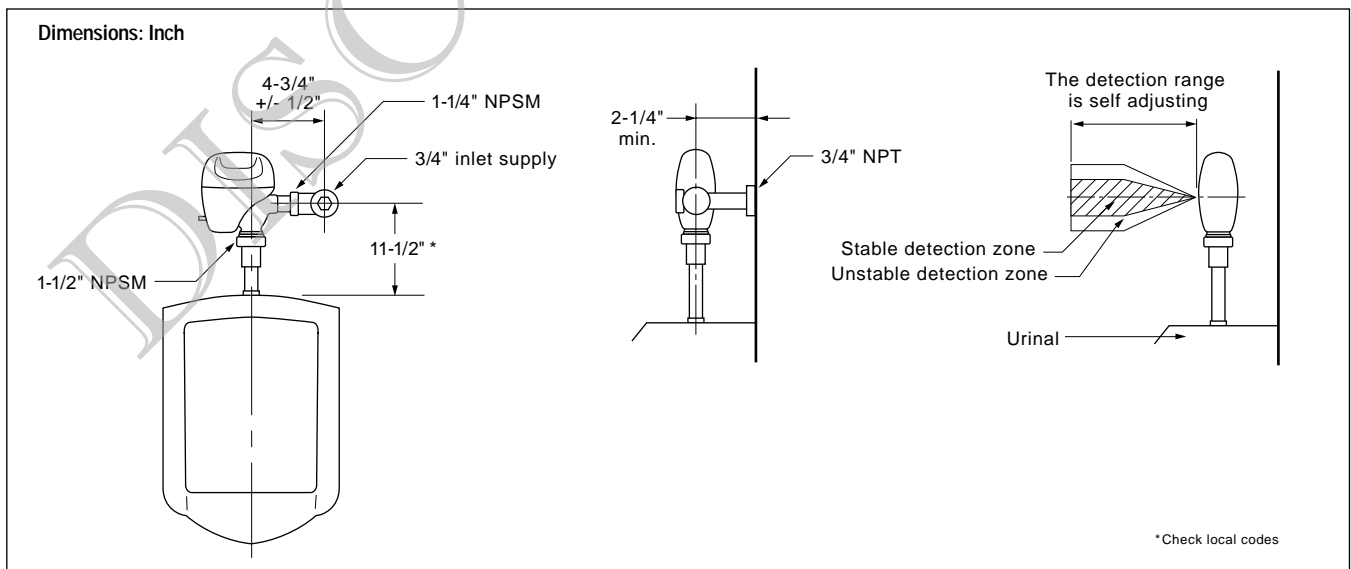
U.S. Patent No. 5008773  
5063622

## SUGGESTED ENGINEERING SPECIFICATION:

TOTO Model No. \_\_\_\_\_  
Automatic infrared sensor activated brass piston action  
urinal flush valve. Heavy duty zinc casted covers. Vandal  
resistant mounting screws. Four AA alkaline batteries with a

2 year life at 4,000 cycles/month. Piston valve with  
stainless self-cleaning debris screen. Automatic flush every  
twenty four hours if not used. Angle stop and vacuum  
breaker included.

## DIAGRAM:



**TOTO**<sup>®</sup>  
Perfection by Design

TOTO U.S.A., INC. • 1155 Southern Road, Morrow, GA 30260  
Tel. (770) 282-8686 • Fax. (770) 282-8701 • www.totousa.com  
Printed in U.S.A. © TOTO LTD. X/01

Printed on recycled paper 

REV 4/00