



Model: TM-CUT25

Instruction manual

Read and understand all of the instructions and safety information in this manual before operating or servicing this tool.

Table of Contents

Warranty and Servicing.....	3
Safety Symbols.....	3
Safety.....	4
Technical Specifications.....	5
Identification.....	6
Operating Instructions.....	7-8
Tool Maintenance.....	9
Tool Parts Breakdown.....	10
Parts List.....	11
Head Assembly Breakdown.....	12
Parts List.....	13

Thank you...

for buying a TASKMASTER TOOL. Our mission is to bring product innovation and exceptional customer service to the marketplace. This tool line is reliable, dependable, and durable for our customer’s needs.

Please read this instruction manual carefully before using the product. If you have any questions about our product please reach out to our customer service department (see back cover). No part of the contents of this manual may be reproduced, transmitted or circulated in any form or by any means without the prior written authorization of TASKMASTER TOOLS.



WARRANTY AND SERVICING

TASKMASTER PRO™ 5-Year Tool Service Protection Program

Introducing the industry's best service & support program for all your ILSCO hydraulic crimping and cutting tools. All ILSCO tool buyers are automatically registered in the TASKMASTER PRO Service Protection Program and will receive free tool repairs for defects in material or workmanship on their tool(s) for five years after their original purchase date. (Excludes abuse, non-intended use, tampered with or normal wear and tear.)

TASKMASTER PRO Tool 5-Day Repair Pledge

If your tool(s) need repair at any time within five years of your original purchase date, our TASKMASTER PRO service network will repair your registered tools within five business days of receipt.

TASKMASTER PRO Tool Loaner Program

If you need a replacement tool during any repair, our TASKMASTER PRO network can typically provide a comparable loaner tool to registered tool owners while your tool is being repaired.

FREE Tool Reconditioning

Your first reconditioning is on us!

To Find a TASKMASTER PRO Service Partner

Call ILSCO for assistance in solving tool performance issues or for any of your service needs. ILSCO tool owners will be offered options to solve any tool replacement, parts or repair issues.

Call 513-533-6200 or 800-776-9775
Monday to Friday
8:00AM to 5:00PM Eastern Time (ET)

SAFETY SYMBOLS



Attention!
Risk of
cutting injury



Never use
with unlocked
workhead



Read the operating
instructions
before use



Wear protective
goggles



Electric Shock
Hazard- use
proper protective
equipment



Do not dispose
of product.
Please recycle

SAFETY

Read all safety warnings, instructions provided with this tool. Failure to follow all instructions listed below may result in electric shock, fire and/or serious injury. Save all warnings and instructions for future reference.

WORK AREA SAFETY

- Keep work area clean and well lit. Cluttered or dark areas invite accidents.
- Keep children and bystanders away while operating a hydraulic tool. Distractions can cause you to lose control.

PERSONAL SAFETY

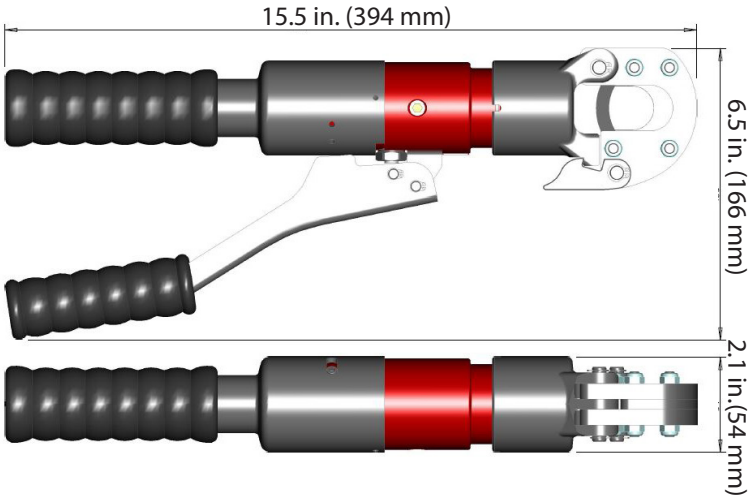
- Stay alert, watch what you are doing and use common sense when operating a hydraulic tool. Do not use a hydraulic tool while you are tired or under the influence of drugs, alcohol, or medication. A moment of inattention while using hydraulic tools may result in serious personal injury.
- Use personal protective equipment. Always wear eye protection. Protective equipment such as rubber gloves, non-skid safety shoes, hard hat or hearing protection used for appropriate conditions will reduce personal injuries.
- Do not overreach. Keep proper footing and balance at all times. This enables better control of the tool in unexpected situations.
- Do not let familiarity gained from frequent use of hydraulic tools allow you to become complacent and ignore tool safety principles. A careless action can cause severe injury within a fraction of a second.

SERVICE

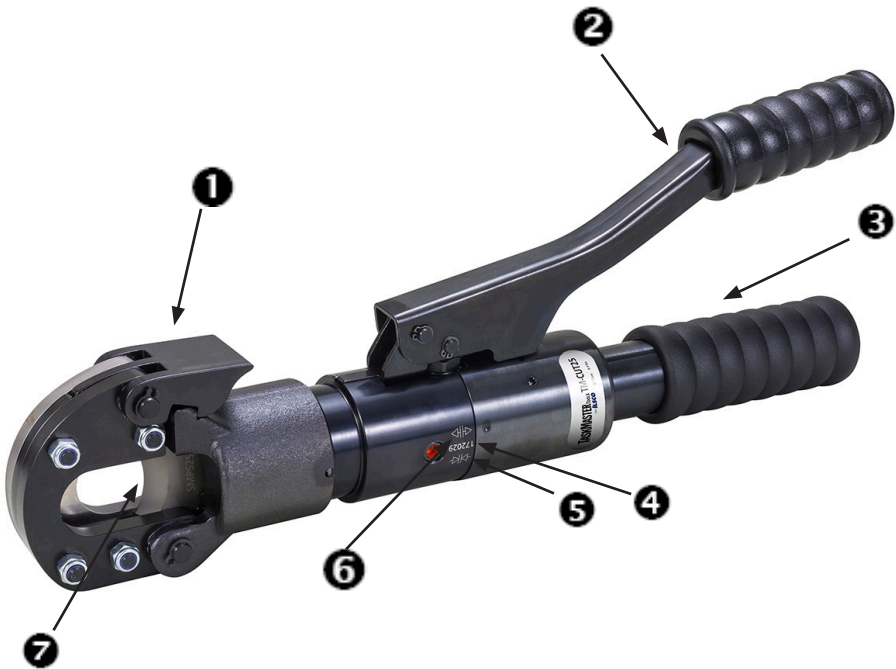
- Have your tool serviced by a qualified repair person using only identical replacement parts. This will ensure that the safety of the hydraulic tool is maintained.

TECHNICAL SPECIFICATIONS

Force developed:	6.7 tons
Jaw opening:	.98 in.
Hydraulic oil:	Shell Tellus S2 V15
Dimensions:	15.5 in. x 2.1 in. x 6.5 in. (L x W x H)
Weight:	6.4 lbs
Cut Capacity	
CU Conductor:	.95 in.
AL:	.95 in.
ACSR:	556kcmil
Guy wire:	5/8 in.
Guy wire (EHS):	1/2 in.
Ground rod:	5/8 in.
Rebar	#4 (1/2") Grade 30 For Grade 60, consult factory



IDENTIFICATION



- | | |
|------------------|-----------------|
| ❶ Latch | ❺ Advance mode |
| ❷ Pump handle | ❻ Retract mode |
| ❸ Release handle | ❼ Movable blade |
| ❹ Serial number | |

NOTE: Includes molded carrying case.

OPERATING INSTRUCTIONS

Be sure to read instructions carefully, wear safety goggles, and keep fingers away from cutting head.

ADVANCING & RETRACTING THE TOOL

1. To advance the tool, twist release handle to advance mode then lift and lower pump handle.
2. To retract the tool, twist release handle to retract mode and the blade will retract.

CUTTING

1. Retract the blade fully by twisting the handle to retract mode.
2. Unlatch the tool head by pulling up on release lever.



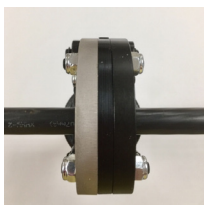
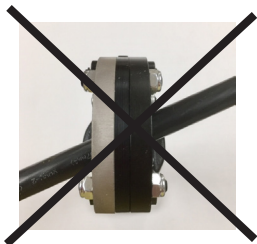
3. Close head and latch around material. Be sure tool is completely latched or damage will occur.



CAUTION: always wear eye protection while cutting

WARNING: Hardened material can fly when cutting. Always point away from people or objects.

4. Make sure all cuts are made perpendicular to the cutting head or damage will occur to blades.



5. Advance the blade by twisting the release handle to advance mode, then lifting and lowering pump handle.



6. Once cutting cycle is complete, rotate release handle to retract mode. The cutting blade will release back to the starting position.



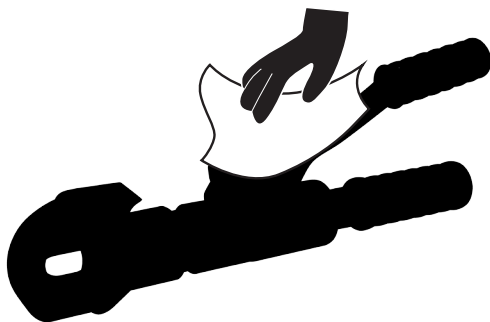
NOTE: Your tool is equipped with a safety bypass. When maximum pressure is achieved, you will hear a pop.

TOOL MAINTENANCE

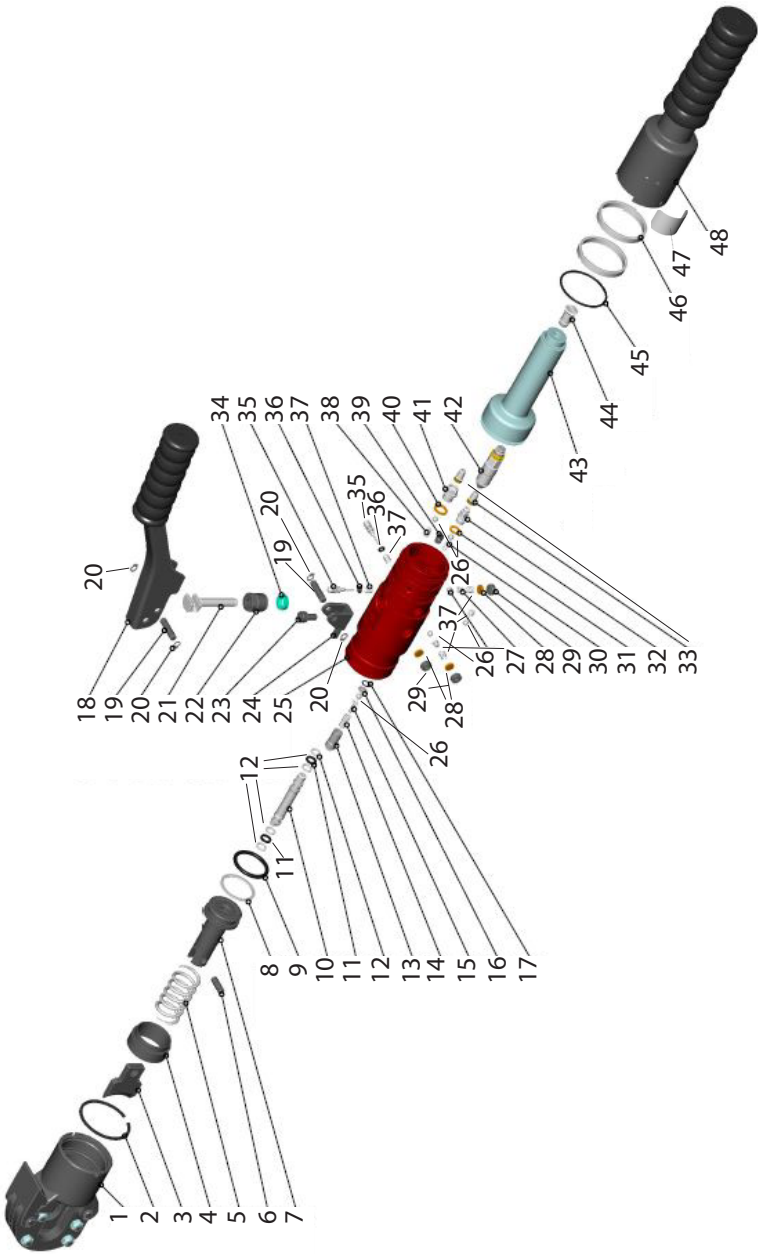
Daily maintenance:

- After each cutting cycle wipe the cutting head jaws free of metal shavings.
- Wipe down all steel parts with WD-40.
- Store the tool in a non-humid environment.

The tool should provide many years of service when given the proper maintenance and care. Should you experience any difficulty with the operation and maintenance of this tool, contact our customer service department (see back cover).



TOOL PARTS BREAKDOWN

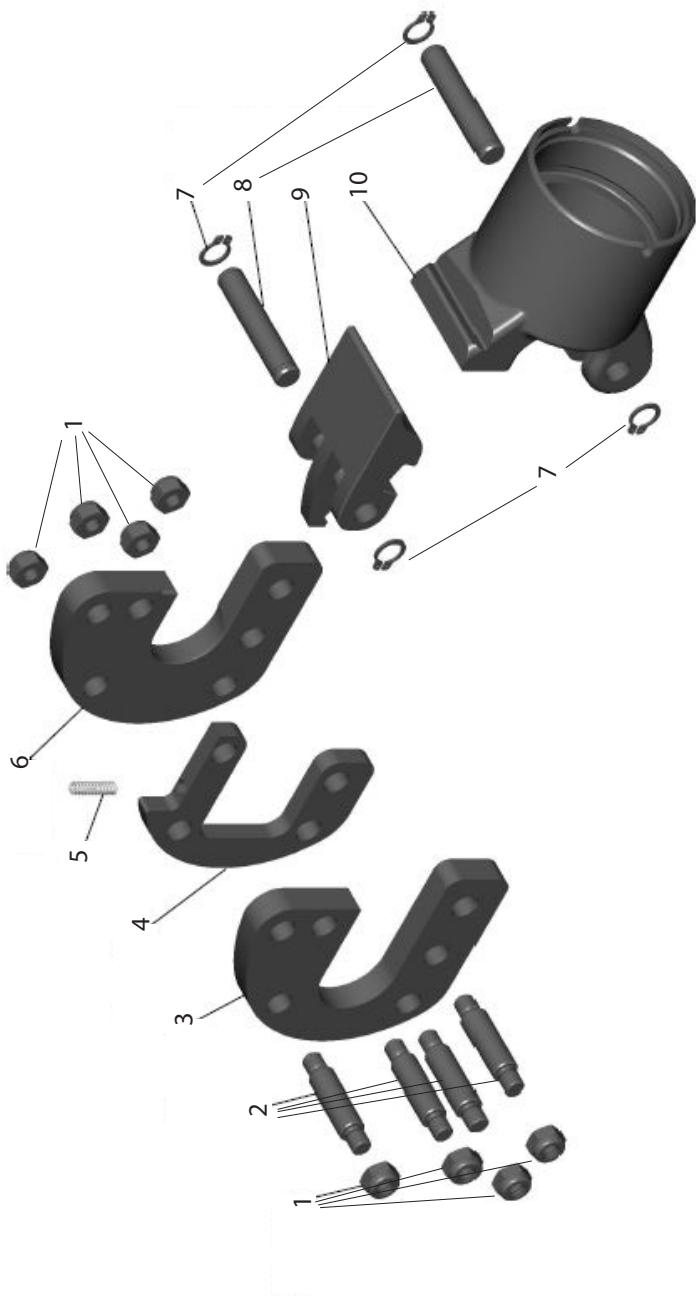


PARTS LIST

#	Part Number	Part Description	Qty.
1	E712166	CUTTING HEAD MNT	1
2	104179	RETAINING RING	1
3	700225	MOVING BLADE	1
4	712008	STOP BUSHING	1
5	103545	COMPRESSION SPRING	1
6	700763	LOCKING PIN	1
7	712162	PISTON	1
8	760380	SUPPORT RING	1
9	760375	O-RING SEAL	1
10	712161	PISTON	1
11	710042	FOUR-LIPS SEAL	2
12	760383	SUPPORT RING	4
13	711971	SPRING BODY	1
14	102733	COMPRESSION SPRING	1
15	711968	SPRING PEN	1
16	714764	VALVE DISC	1
17	710828	O-RING SEAL	1
18	760212	GRIP PUMP LEVER MNT	1
19	760179	BOLT	2
20	205230	LOCKING RING	4
21	760205	PUMPING PISTON	1
22	713181	PISTON SCREW	1
23	200810	CAP SCREW	1
24	760238	ANCHOR SHORT	1

#	Part Number	Part Description	Qty.
25	712164	PUMP BODY	1
26	760415	BALL	6
27	760194	SPRING PEN	2
28	760232	SEAL DISC	3
29	760203	LOCK SCREW	3
30	760356	COMPRESSION SPRING	1
31	760346	DISC	1
32	760190	VALVE SCREW	1
33	706979	OIL SCREEN	2
34	713182	LIP SEAL	1
35	760186	PISTON	2
36	700732	O-RING SEAL	2
37	700665	COMPRESSION SPRING	5
38	710984	PRESSURE SPRING	1
39	200308	GRUB SCREW	1
40	760348	DISC	1
41	710344	VALVE BODY	1
42	713796	PRESSURE CONTROL VALVE	1
43	760182	TANK	1
44	760183	TANK PLUG	1
45	103573	O-RING SEAL	1
46	760184	BALL RACE	1
47		LABEL	1
48	760213	TANK GRIP MNT	1

HEAD ASSEMBLY BREAKDOWN



PARTS LIST

#	Part Number	Part Description	Qty
1	206028	HEXAGONAL NUT	8
2	700518	THREADED BOLT	4
3	700590	FRAME	1
4	700591	BLADE GUIDE	1
5	700761	COMPRESSION SPRING	1
6	700226	FIXED BLADE	1
7	701425	LOCKING RING	4
8	712010	BOLT	2
9	702021	LOCKING LEVER	1
10	712167	HEAD FORK	1

This image shows a single sheet of white paper with horizontal ruling lines. The lines are evenly spaced and run across the width of the page. There are no margins, text, or other markings on the paper.

This image shows a single page of white paper with horizontal ruling lines. The lines are evenly spaced and run across the width of the page. There are no margins, text, or other markings on the paper.

TASKMASTER[®] *Tools*

from **ILSCO[®]**

Date: 03/18 Version 2

TASKMASTER TOOLS
4730 Madison Rd.
Cincinnati, OH 45227

Phone: 800-776-9775
513-533-6200

www.ilsco.com

Service: