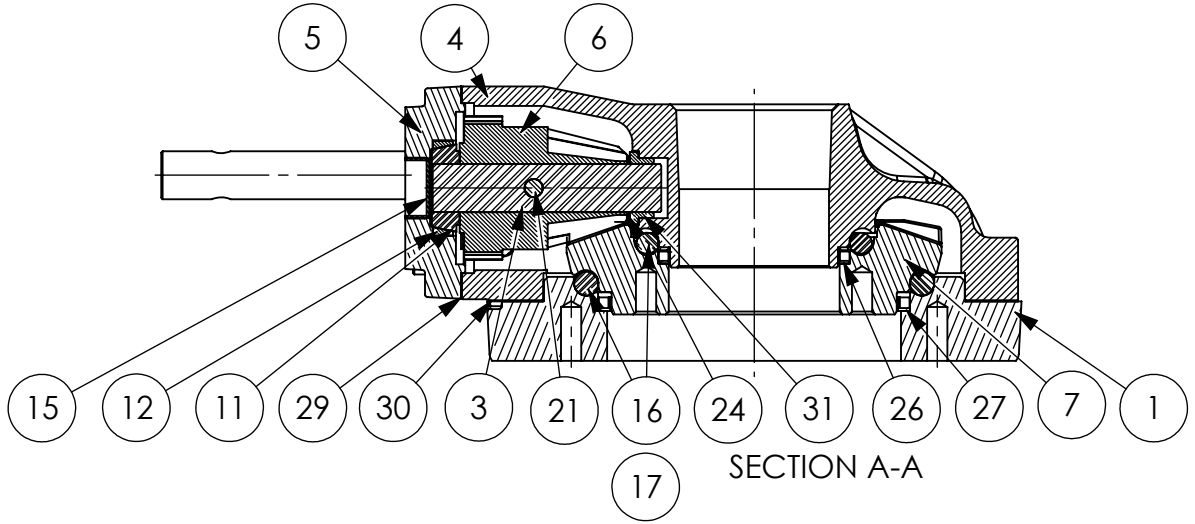
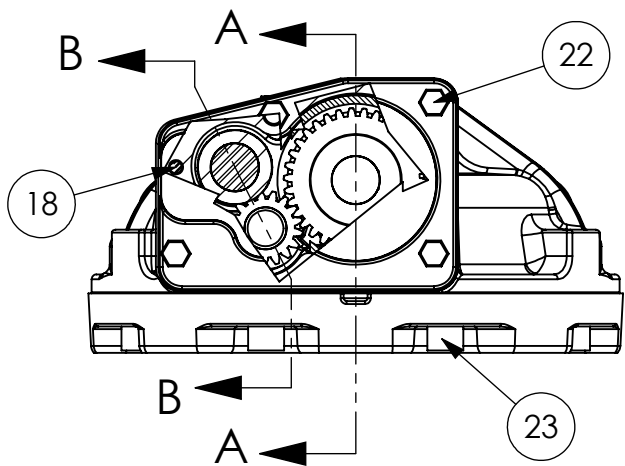


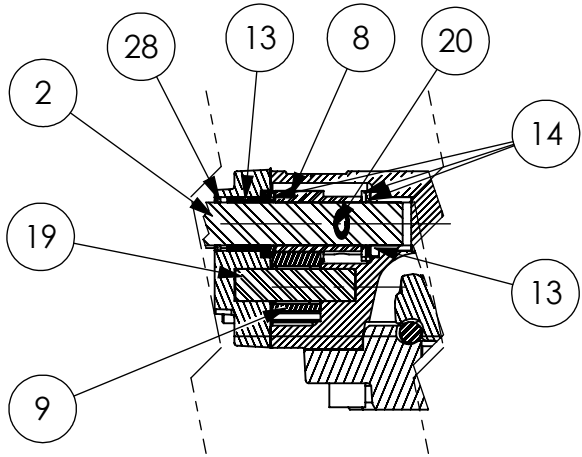
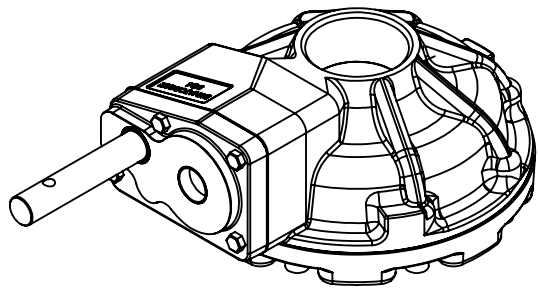
CONSULT FACTORY FOR  
SPECIAL CONFIGURATIONS

7D-22-8XX SHEET 1 OF 2 1/27/15

MOUNTING PATTERN			DRIVE PATTERN	RATIO: 8:1 THRUST: 80,000 LBS [356 KN] TORQUE: 2,300 FT-LB [3,118 N-M] TEMPERATURE: -20° TO 150°F [-29° TO 66°C] EST. WEIGHT: 83 LBS [37.7 KGS] GREASED FOR LIFE	MANUAL MULTI-TURN ACTUATOR COMMERCIAL GRADE	
STD	MIN	MAX	STD		<b>DYNATORQUE</b> WWW.DYNATORQUE.COM A BRAND OF	<b>BG42 GT</b>
Ø 7.625 1/2-13 UNC	Ø 6.875 3/8-16 UNC	Ø 10.180 5/8-11 UNC	Ø 4.500 1/2-13 UNC			



SECTION A-A



SECTION B-B

- 10 UNIT IS PAINTED BLACK ENAMEL.
- 26 UNIT BEARING & GEAR TEETH ARE GREASED.

ITEM	QTY	DESCRIPTION	ITEM	QTY	DESCRIPTION
1	1	BEARING RET, BG4GT H.T.	19	1	DOWEL PIN,.750,2.50
2	1	SHAFT,BG42,STD	20	1	COIL PIN,.313,1.25
3	1	SHAFT,BG42,PINION	21	1	GROOVE PIN,.375,2.25
4	1	HOUSING,BG42GT, H.T.	22	4	HHCS, 3/8-16 X 1.25 LG
5	1	BRG HSG, BG42, MACH	23	8	SHCS,1/2-13 X 1.25
6	1	BEVEL PINION BG42 MACH	24	1	WASHER, WAVE
7	1	BEVEL GEAR, BG4GT, HT	25	1	GREASE,COMMERCIAL GRADE
8	1	INPUT GEAR, BG42/SQ6	26	1	LIP SEAL,3.50
9	1	IDLER GEAR, BG42	27	1	LIP SEAL,6.00
10	1	BLACK ENAMEL	28	1	LIP SEAL,1.00
11	1	ROLLER BEARING,CONE	29	1	GASKET, BRG HSG
12	1	ROLLER BEARING,CUP	30	1	GASKET, BRG RET
13	2	BEARING,FLANGED,1.25,1.0,.88	31	1	BEARING,FLANGED,1.0
14	3	THRUST WASHER,1.00,.092	32	1	BEARING SLV,.875,.750,.88
15	1	EXPANSION PLUG,1.25,.50			
16	36	BALL BEARING,.500 DIA			
17	36	BALL BEARING,.469 DIA			
18	1	DOWEL PIN,.250,.75			

**DYNATORQUE**  
 WWW.DYNATORQUE.COM  
 A BRAND OF

**BG42  
 GT**