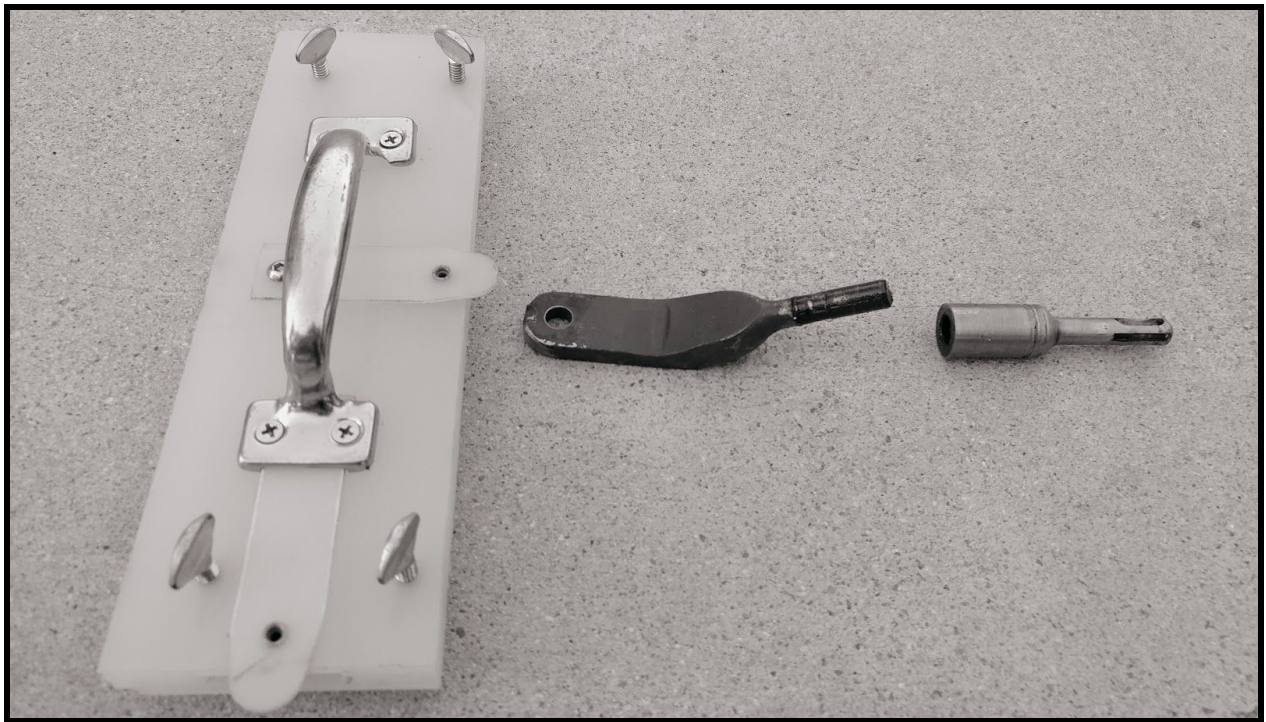


# TAPPER TOOL CO.

## RAPID TAPPER



**IMPORTANT:** READ THIS OPERATOR'S MANUAL BEFORE USING RAPID TAPPER.



Leave a review at [f/TapperToolCo](https://www.facebook.com/TapperToolCo)

Order replacement parts at [TapperToolCo.com](https://www.TapperToolCo.com)

# CONTENTS

<b>WARRANTY</b>	<b>1</b>
<b>SAFETY INSTRUCTIONS &amp; WARNINGS</b>	<b>2</b>
<b>OPERATION &amp; MAINTENANCE INSTRUCTIONS</b>	<b>3</b>
<b>NORMAL USE CASES</b>	<b>4</b>
<b>EXPLODED VIEW &amp; PARTS LIST</b>	<b>4</b>

---

## WARRANTY

We take pride in producing a high quality, durable product. This Tapper Tool Co. LLC product carries a limited 30 day warranty against defects in workmanship and materials from the date of purchase under normal use. Warranty does not apply to damage due to direct or indirect abuse, negligence, misuse, accidents, repairs, or alterations and lack of maintenance. Please register your product at [TapperToolCo.com](http://TapperToolCo.com) with valid proof of purchase. For product service visit [TapperToolCo.com](http://TapperToolCo.com).

# SAFETY INSTRUCTIONS & WARNINGS

Read and understand all instructions before using this product.

Safety is a combination of common sense, staying alert, and knowing how your tool works.

Use this product only as described in this manual. Incorrect use of the Rapid Tapper can lead to serious injury or damage.

The Rapid Tapper uses a Rotary Hammer drill to operate. Use with caution as power tools can be dangerous. Abide by all safety instructions provided with the Rotary Hammer.

Always wear eye and ear protection while operating and using the Rapid Tapper.

The safety swivel is designed as a backup safety device to protect the user if the Rotary Hammer is left on the drill setting, but the Rapid Tapper is not designed to be used in drill setting. Verify the Rotary Hammer is on hammer setting before use.

Use caution to avoid overheating, as all power tools become hot with extended use.

Metal parts of the Rapid Tapper become hot as well so after use. DO NOT touch parts until they have cooled.

Metal adjusting legs should only be used on concrete surfaces when using a glue down product. Using the legs over wood or any underlayment foam will result in damage of the underlayment. Remove legs during installation over these underlayments.

Use Rapid Tapper only for its intended use, with hardwood floor and laminate products that require the use of a tapping block.

Use caution around fragile objects such as sliding glass doors, ceramic tile, toilets, and any other fragile surfaces or objects to avoid damage.

# OPERATION & MAINTENANCE INSTRUCTIONS

Register your product at [TapperToolCo.com](http://TapperToolCo.com).

Clean the Rapid Tapper before use, removing all foreign debris from the block and other parts. A rag and clear odorless mineral spirits can be used to clean off dirt, glue, or other debris from the Rapid Tapper.

Lubricate the Rapid Tapper on the swivel shaft and SDS shaft using gear grease. If not properly lubricated, the tool can overheat and seize.

Apply grease. Wipe excess grease with rag after assembled.


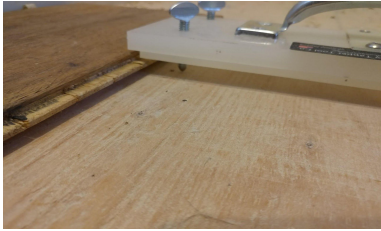

Lubricate before use and every 30 minutes during use.

Alternatively, lubricate with high-temperature grease every 4 hours.

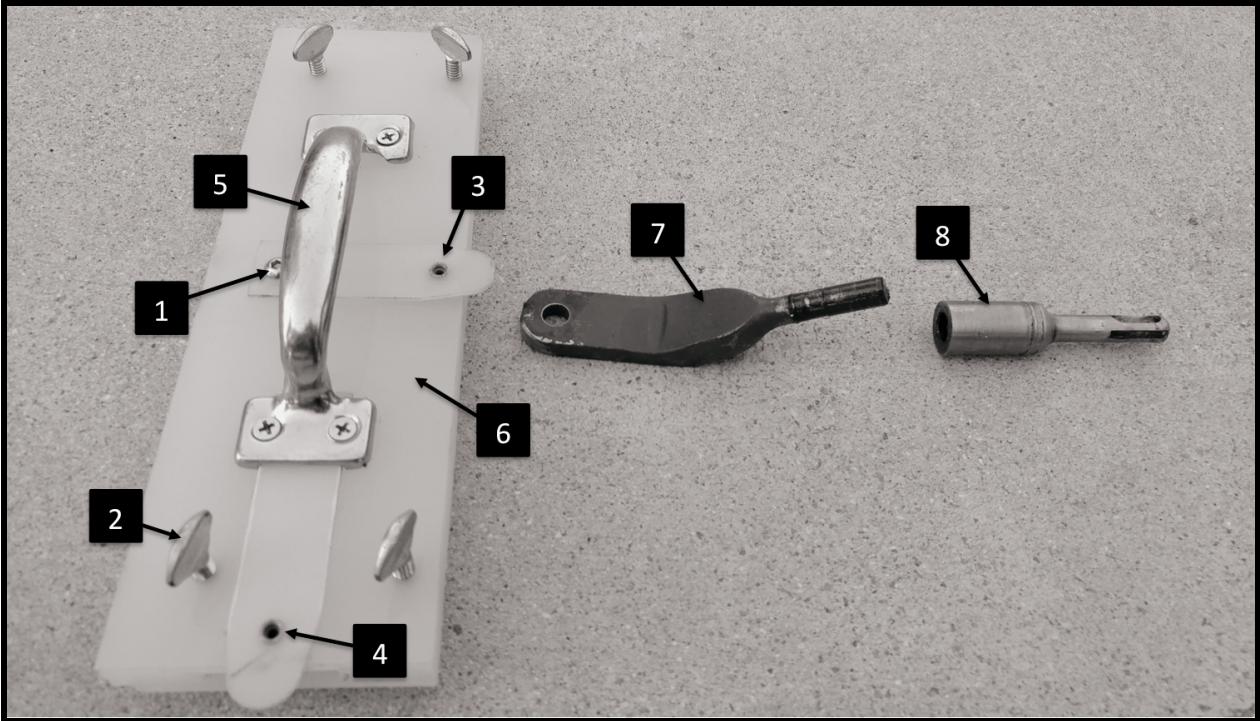
Identify a location to set the Rapid Tapper when performing installation with glue to prevent transferring glue from the Rapid Tapper to flooring or other clean locations. Ensure cord does not touch glue when using a corded Rotary Hammer.

Store the Rapid Tapper in a dry area.

# NORMAL USE CASES

	<p><b>Full Run Installation:</b> Install the Rapid Tapper on your rotary hammer so that the long edge faces flooring. Run Rapid Tapper along flooring panels to install.</p>
	<p><b>Single Board Installation or Removal:</b> To install or remove a single board, install the Rapid Tapper so the short end faces the board to be installed or removed.</p>
	<p><b>OSB Board Installation:</b> The Rapid Tapper can be used with OSB boards and other large installations. We recommend using the long side of the Rapid Tapper for large installations.</p>

# EXPLODED VIEW & PARTS LIST



	ITEM	QTY
1	12-24 Screw	2
2	¼-20 Thumb Screw	4
3	Front Spring Clip	1
4	Side Spring Clip	1
5	Handle	1
6	Tapper Body	1
7	Spoon	1
8	Safety Connector	1

Order replacement parts at [TapperToolCo.com/buy](http://TapperToolCo.com/buy)