

# SEQUENTIAL ECR

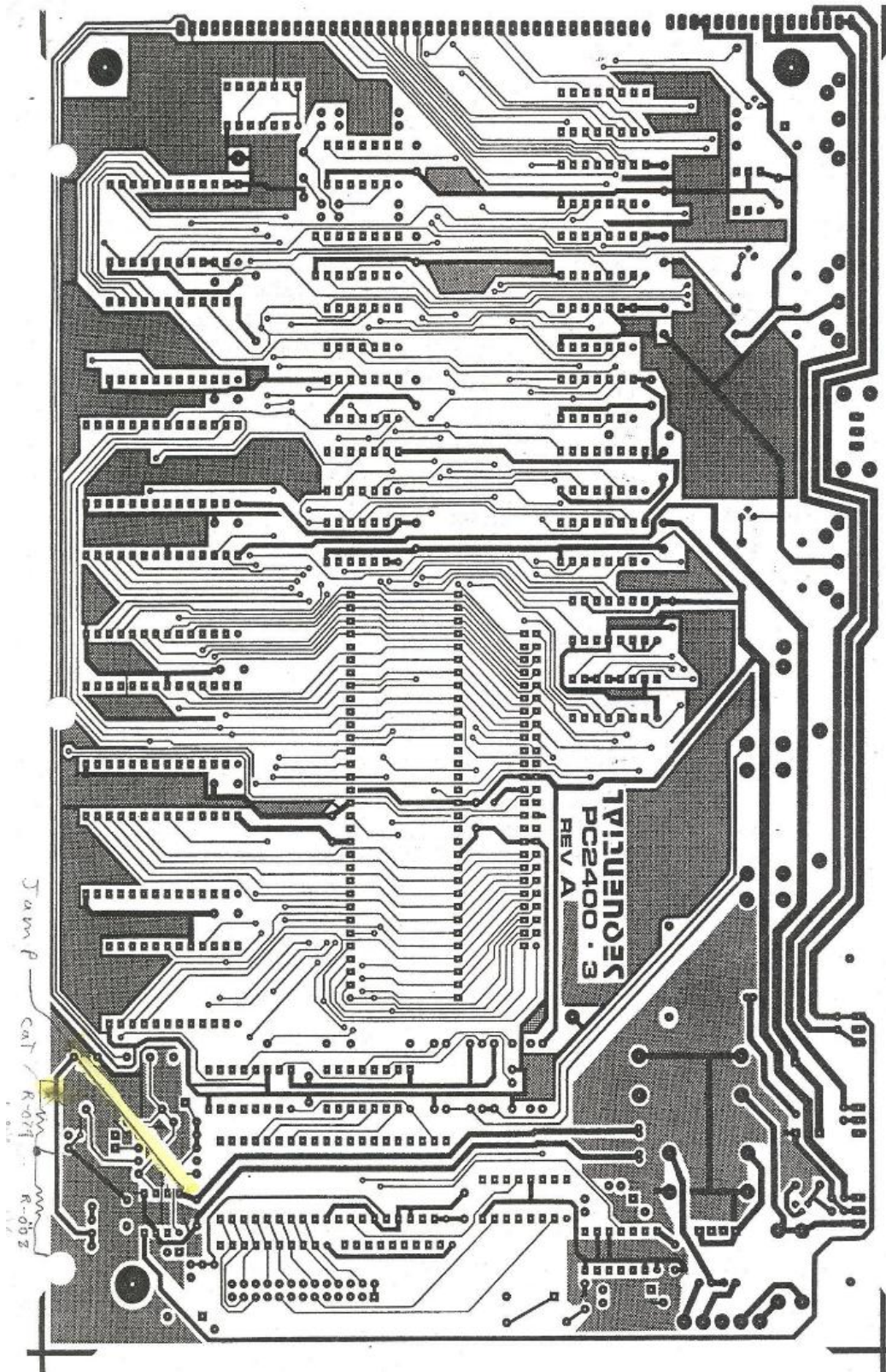
ORIGINATOR <i>Scott P</i>		SERV. MGR <i>[Signature]</i>		DESIRED EFF. DATE <b>5-7-87</b>	
SUPERVISOR		MFG. MGR. <i>[Signature]</i>		FINALIZED EFF. DATE	
ENG. MGR. <i>[Signature]</i>		PROD. ENGR. <i>[Signature]</i>		INC. BY <i>[Signature]</i>	
PRIORITY: EMERGENCY <input type="checkbox"/> URGENT <input checked="" type="checkbox"/> STANDARD <input type="checkbox"/>		TYPE OF CHANGE: RELEASE <input type="checkbox"/> DESIGN <input checked="" type="checkbox"/> RECORD <input type="checkbox"/>		AFFECTING: NEW PROD. <input checked="" type="checkbox"/> INVENTORY <input type="checkbox"/> TEST EQUIP <input type="checkbox"/>	
MODEL NO. <b>2400</b>		ASSY. NO. <b>2-367</b>		CUR. REV. <b>-</b>	
NEXT REV. <b>-</b>		DESCRIPTION <b>2400 PCB #3 Assembly</b>		CHK. BY <i>[Signature]</i>	
REASON FOR CHANGE: <i>Interlink force sensing resistor material can only take 1.5V across resistive element.</i>					
DESCRIPTION OF CHANGES: (IF MORE SPACE IS REQUIRED, USE SUPPLEMENT SHEET.)					
1. Cut The Two Traces connecting J306 pin 1+2 To +12V					
2. Jump from U310 pin 8 To lower leg of Offset Trimmer					
3. Add 6.8K (R-079) from +12V To J306 pin 1+2					
4. Add 1K (R-008) from ground To J306 pin 1+2					
5. Change R304 from 2K (R-010) To 15K (R-014)					
DOCUMENTS AFFECTED					

# SEQUENTIAL ECR SUPPLEMENT

ECR NO. 739  
SHT. 2 OF 6

## ENGINEERING BOM DATA

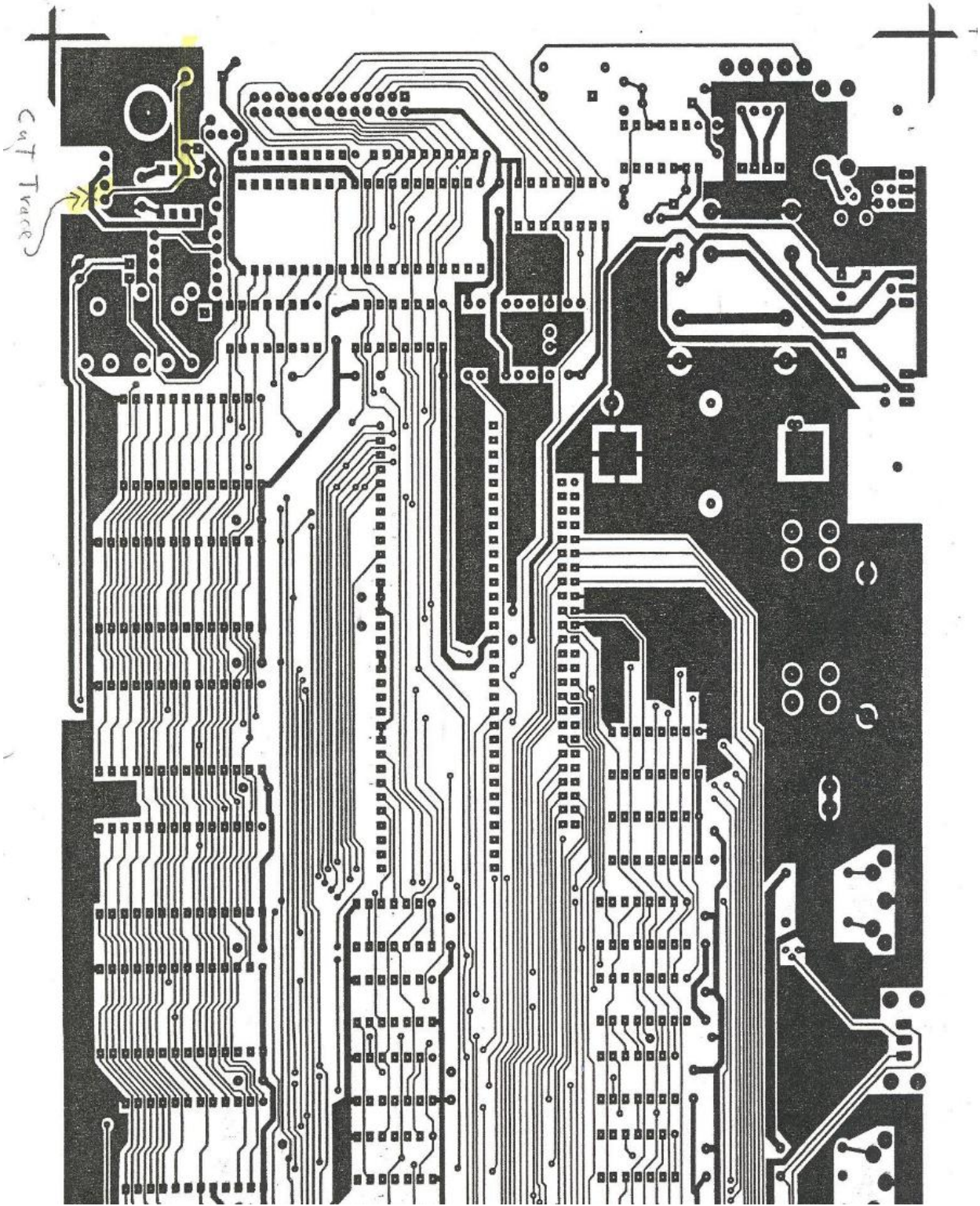
A	C	D	ASSY. NO.	PART NO.	QTY		DESCRIPTION	INC. BY
					WAS	IS		
X			2-367	R-079	0	1	6.8K 1/4W 5%	<i>CPM</i>
	X		2-367	R-008	1	2	1K 1/4W 5%	<i>CPM</i>
		X	2-367	R-010	1	0	2K 1/4W 5%	<i>CPM</i>
X			2-367	R-014	0	1	15K 1/4W 5%	<i>CPM</i>



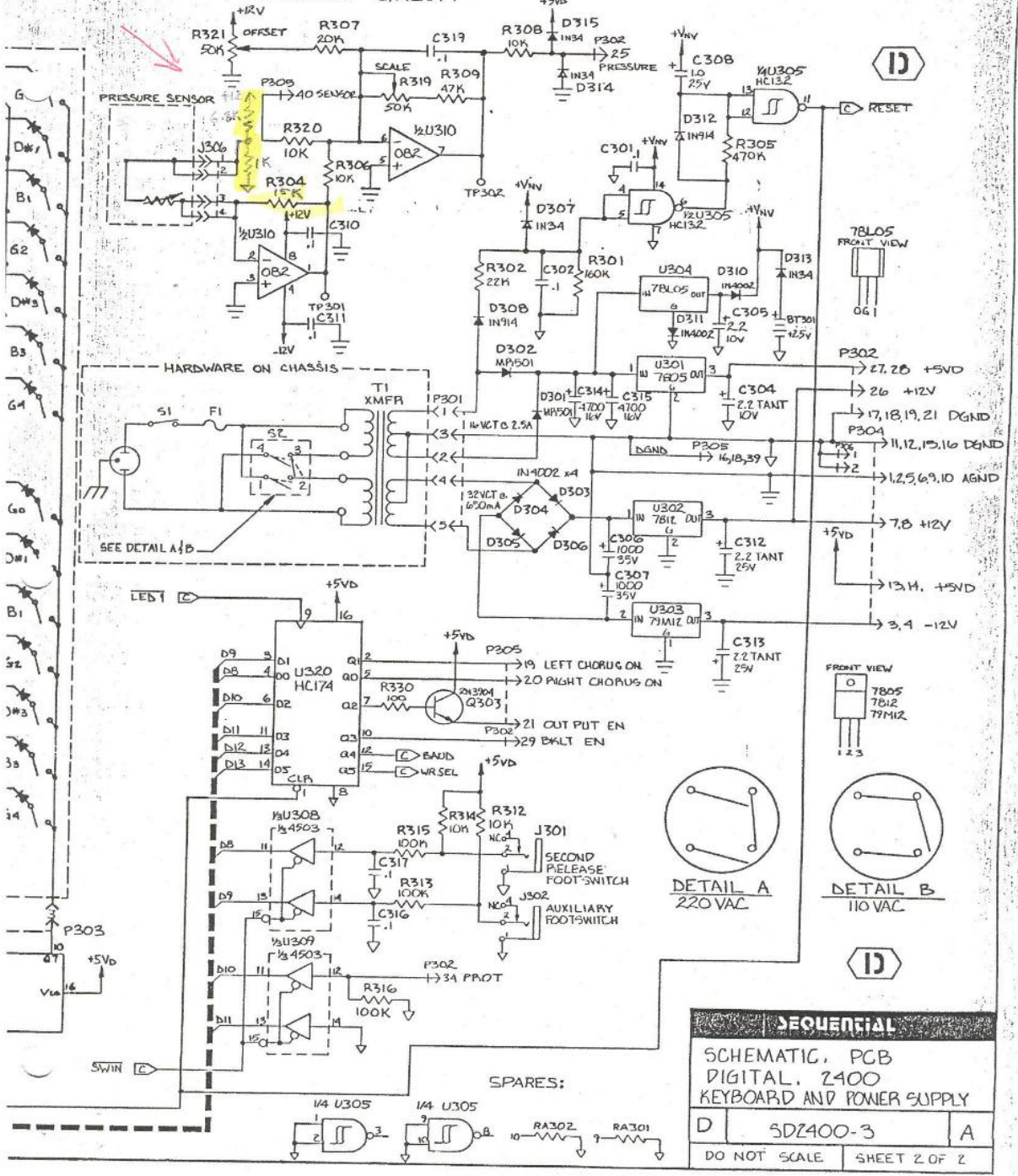
PC2400-3  
DATE 2-4-86

Jawn P  
CAT  
R-007  
R-002

TY11UEN035  
PC2400-3  
REV A



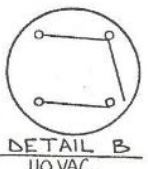
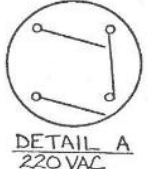
# PRESSURE CIRCUIT



D

FRONT VIEW  
7805  
7812  
79M12  
1 2 3

FRONT VIEW  
7805  
7812  
79M12  
1 2 3



D

SEQUENTIAL		
SCHEMATIC, PCB DIGITAL, Z400 KEYBOARD AND POWER SUPPLY		
D	SDZ400-3	A
DO NOT SCALE		SHEET 2 OF 2