

**EH2500 Series
Dust-Tight Enclosure**

**Maintenance/
Service Manual**

C1473SM-B (9/04)

CONTENTS

| <u>Section</u> | <u>Page</u> |
|---|-------------|
| IMPORTANT SAFEGUARDS AND WARNINGS | 3 |
| DESCRIPTION | 4 |
| MODELS | 4 |
| MAINTENANCE | 4 |
| EXPLODED ASSEMBLY DIAGRAMS | 5 |
| WARRANTY AND RETURN INFORMATION | 8 |

LIST OF ILLUSTRATIONS

| <u>Figure</u> | <u>Page</u> |
|---|-------------|
| 1 EH2500 Series Exploded Assembly Diagram | 5 |
| 2 EH2500 Series Wiring Diagram | 7 |

LIST OF TABLES

| <u>Table</u> | <u>Page</u> |
|--|-------------|
| A EH2500 Series Exploded Assembly Parts List | 6 |
| B EH2500 Series Wiring Diagram Parts List | 7 |

IMPORTANT SAFEGUARDS AND WARNINGS

Prior to installation and use of this product, the following WARNINGS should be observed.

1. Installation and servicing should only be done by qualified service personnel and conform to all local codes.
2. Unless the unit is specifically marked as a NEMA Type 3, 3R, 3S, 4, 4X, 6 or 6P enclosure, it is designed for indoor use only and it must not be installed where exposed to rain and moisture.
3. Only use replacement parts recommended by Pelco.
4. After replacement/repair of this unit's electrical components, conduct a resistance measurement between line and exposed parts to verify the exposed parts have not been connected to line circuitry.
5. The installation method and materials should be capable of supporting four times the weight of the unit and equipment.

The product and/or manual may bear the following marks:



This symbol indicates that dangerous voltage constituting a risk of electric shock is present within this unit.



This symbol indicates that there are important operating and maintenance instructions in the literature accompanying this unit.

| |
|---|
| CAUTION: |
| RISK OF ELECTRIC SHOCK. DO NOT OPEN. |

Please thoroughly familiarize yourself with the information in this manual prior to installation and operation.

DESCRIPTION

The EH2500 Series enclosures are sealed, dust-tight and waterproof camera enclosures designed to protect a CCTV camera and lens from adverse environmental conditions.

The enclosures feature a sled for camera mounting and a “T” handle on the rear plate to assist in removing the back plate during installation and servicing.

All models will accept CCD cameras with fixed focal length or motorized zoom lenses.

MODELS

| | |
|----------------|--|
| EH2508 | 6.25" L x 2.75" W x 2.75" H (15.88 x 6.99 x 6.99 cm) |
| EH2508-1/-2/-3 | 5.25" L x 2.75" W x 2.75" H (13.44 x 6.99 x 6.99 cm), 120/24/230 VAC heater |
| EH2512 | 10.25" L x 2.75" W x 2.75" H (26.04 x 6.99 x 6.99 cm) |
| EH2512-1/-2/-3 | 9.25" L x 2.75" W x 2.75" H (23.50 x 6.99 x 6.99 cm), 120/24/230 VAC heater |
| EH2515 | 13.25" L x 2.75" W x 2.75" H (33.66 x 6.99 x 6.99 cm) |
| EH2515-1/-2/-3 | 12.25" L x 2.75" W x 2.75" H (31.12 x 6.99 x 6.99 cm), 120/24/230 VAC heater |

MAINTENANCE

Regularly scheduled maintenance is not required. Clean the outer surface of the enclosure with a nonabrasive cleaning cloth and antistatic cleaner. Clean the viewing window with mild nonabrasive soap and water to maintain picture clarity. Do not use kerosene or similar substances that may damage the surface.

EXPLODED ASSEMBLY DIAGRAMS

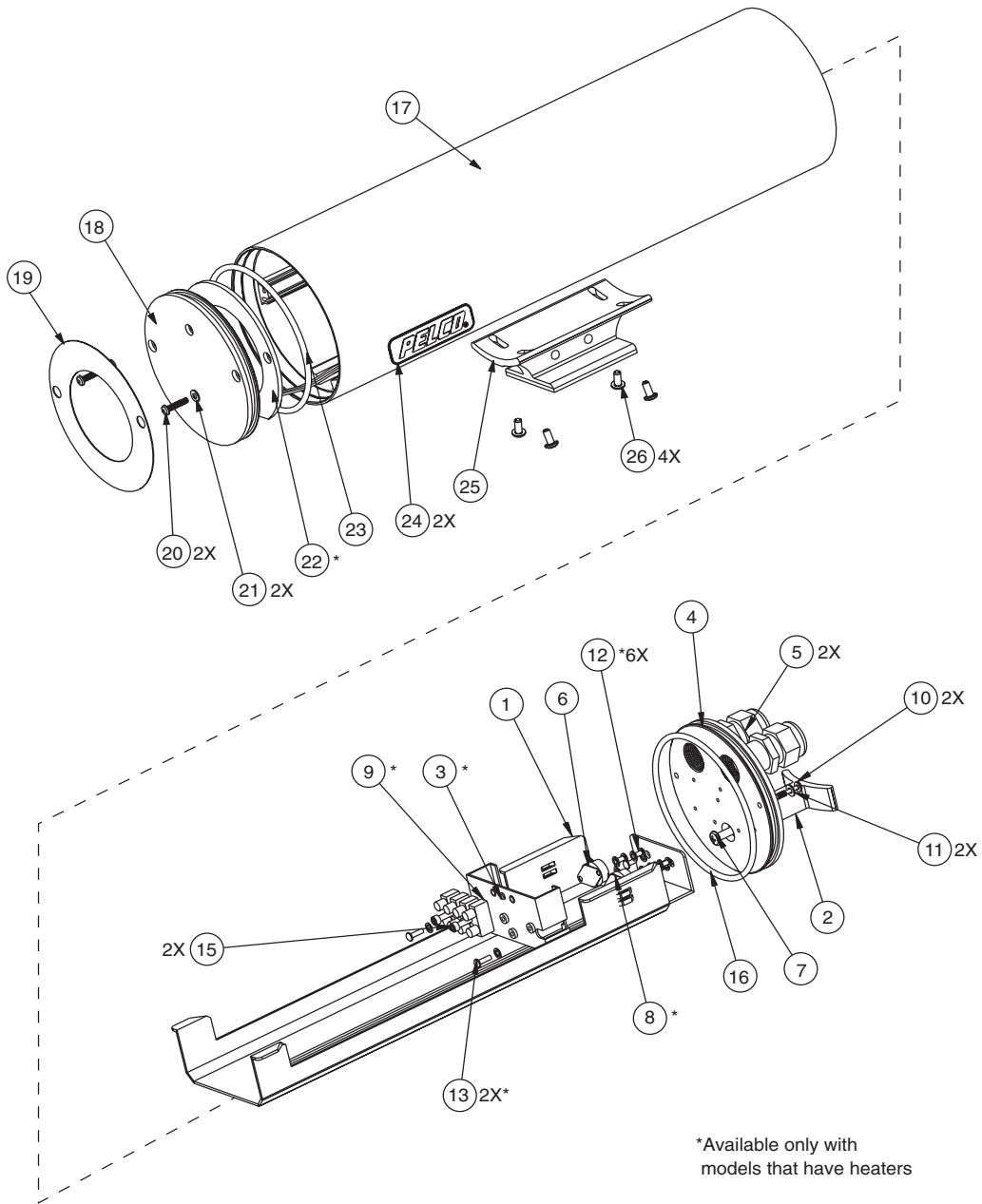


Figure 1. EH2500 Series Exploded Assembly Diagram

Table A. EH2500 Series Exploded Assembly Parts List

| Item | Qty | Description | Part Number |
|------|-----|--|----------------|
| 1 | 1 | Camera sled, EH2508 | EH2584300COMP |
| | 1 | Camera sled, EH2512 | EH25124300COMP |
| | 1 | Camera sled, EH2515 | EH25154300COMP |
| 2 | 1 | T-handle | EH2584202COMP |
| 3 | 1 | Terminal bracket | EH2584901COMP |
| 4 | 1 | Rear plate | EH2584902COMP |
| 5 | 2 | Liquid-tight fitting | HF00-1300-3500 |
| 6 | 1 | Thermostat | EH5510049A |
| 7 | 1 | Self-sealing fastener, 10-24 x .750" | EHP10001 |
| 8 | 1 | Thermostat | TH01-8570-0100 |
| 9 | 1 | Terminal block, 4-position | TRB323HDS-04 |
| 10 | 2 | Screw, 6-32 x 5/8", button head, captive | ZH00-0213-0709 |
| 11 | 2 | Nylon washer, #6 | ZH150X310X32N |
| 12 | 6 | 4-40 x 1/4", Phillips pan head screw and lock washer | ZH01-2001-0403 |
| 13 | 2 | 4-40 x 3/8", Phillips pan head screw and lock washer | ZH01-2001-0405 |
| 14 | | N/A | |
| 15 | 2 | Screw, 6-32 x 5/8", socket head cap | ZH6-32X.625CS |
| 16 | 1 | O-ring | ZH69-0205-2404 |
| 17 | 1 | Housing, EH2508 | EH2584102COMP |
| | 1 | Housing, EH2512 | EH25124102COMP |
| | 1 | Housing, EH2515 | EH25154102COMP |
| 18 | 1 | Window | EH2584501COMP |
| 19 | 1 | Cosmetic decal | OL01-0023-0001 |
| 20 | 2 | Screw, captive, 6-32 x 5/8", button head, socket | ZH00-0213-0709 |
| 21 | 2 | Nylon washer, #6 | ZH150X310X32N |
| 22 | 1 | Dual-element window heater, 120 VAC | HT01-0012-0204 |
| | 1 | Dual-element window heater, 24 VAC | HT01-0022-0204 |
| | 1 | Dual-element window heater, 230 VAC | HT01-0032-0204 |
| 23 | 1 | O-ring | ZH69-0205-2404 |
| 24 | 2 | Pelco label | LBLG10020 |
| 25 | 1 | Mount | EH2584200COMP |
| 26 | 4 | Screw, 8-32 x 3/8", button head, hex socket | ZH01-0401-0805 |

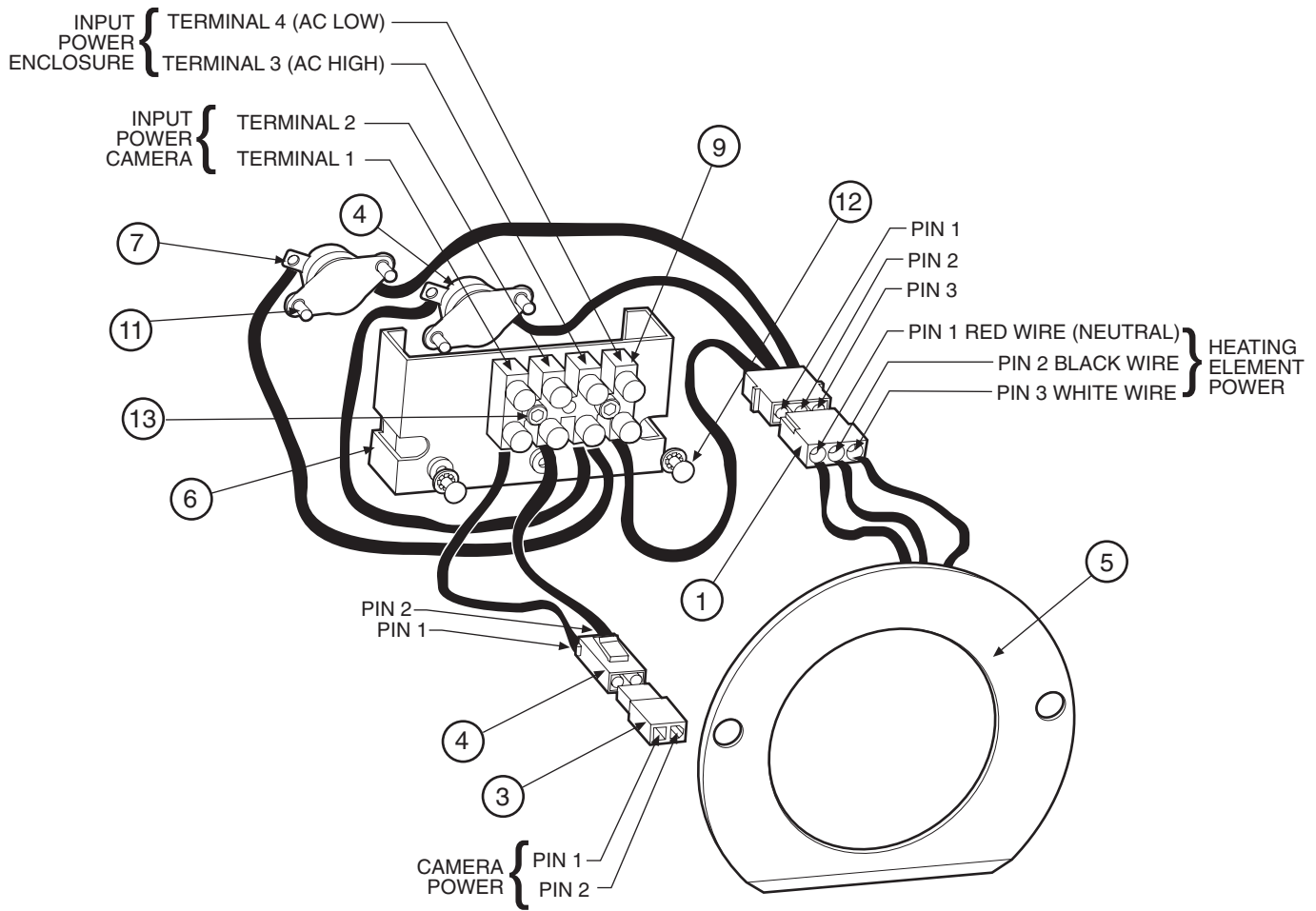


Figure 2. EH2500 Series Wiring Diagram

Table B. EH2500 Series Wiring Diagram Parts List

| Item | Qty | Description | Part Number |
|------|-----|--|----------------|
| 1 | 1 | Connector, 3-pin plug | CON1-480303-0 |
| 2 | 1 | Connector, 3-pin cap | CON1-480305-0 |
| 3 | 1 | Connector, 2-pin plug (camera power) | CON1-480318-0 |
| 4 | 1 | Connector, 2-pin cap | CON1-480319-0 |
| 5 | 1 | Dual-element window heater, 120 VAC | HT71-0012-204 |
| | 1 | Dual-element window heater, 24 VAC | HT72-0022-204 |
| | 1 | Dual-element window heater, 230 VAC | HT73-0032-204 |
| 6 | 1 | Terminal bracket | EH2584901COMP |
| 7 | 1 | Thermostat | EH5510049A |
| 8 | 1 | Thermostat | TH01-8570-0100 |
| 9 | 1 | Terminal block, 4-position | TRB323HDS-04 |
| 10 | | N/A | ZH4LWSIS |
| 11 | 4 | 4-40 x 1/4", Phillips pan head screw and lock washer | ZH01-2001-0403 |
| 12 | 2 | 4-40 x 3/8", Phillips pan head screw and lock washer | ZH01-2001-0405 |
| 13 | 2 | Screw, 6-32 x 5/8", socket head, cap | ZH6-32X.625CS |
| -- | 1 | 6-32 thumbnut (not shown) | ZH6-32THUMNUT |

PRODUCT WARRANTY AND RETURN INFORMATION

WARRANTY

Pelco will repair or replace, without charge, any merchandise proved defective in material or workmanship **for a period of one year** after the date of shipment.

Exceptions to this warranty are as noted below:

- Five years on FT/FR8000 Series fiber optic products.
- Three years on Genex® Series products (multiplexers, server, and keyboard).
- Three years on Camclosure® and fixed camera models, except the CC3701H-2, CC3701H-2X, CC3751H-2, CC3651H-2X, MC3651H-2, and MC3651H-2X camera models, which have a five-year warranty.
- Two years on standard motorized or fixed focal length lenses.
- Two years on Legacy®, CM6700/CM6800/CM9700 Series matrix, and DF5/DF8 Series fixed dome products.
- Two years on Spectra®, Esprit®, ExSite™, and PS20 scanners, including when used in continuous motion applications.
- Two years on Esprit® and WW5700 Series window wiper (excluding wiper blades).
- Eighteen months on DX Series digital video recorders, NVR300 Series network video recorders, and Endura™ Series distributed network-based video products.
- One year (except video heads) on video cassette recorders (VCRs). Video heads will be covered for a period of six months.
- Six months on all pan and tilts, scanners or preset lenses used in continuous motion applications (that is, preset scan, tour and auto scan modes).

Pelco will warrant all replacement parts and repairs for 90 days from the date of Pelco shipment. All goods requiring warranty repair shall be sent freight prepaid to Pelco, Clovis, California. Repairs made necessary by reason of misuse, alteration, normal wear, or accident are not covered under this warranty.

Pelco assumes no risk and shall be subject to no liability for damages or loss resulting from the specific use or application made of the Products. Pelco's liability for any claim, whether based on breach of contract, negligence, infringement of any rights of any party or product liability, relating to the Products shall not exceed the price paid by the Dealer to Pelco for such Products. In no event will Pelco be liable for any special, incidental or consequential damages (including loss of use, loss of profit and claims of third parties) however caused, whether by the negligence of Pelco or otherwise.

The above warranty provides the Dealer with specific legal rights. The Dealer may also have additional rights, which are subject to variation from state to state.

If a warranty repair is required, the Dealer must contact Pelco at (800) 289-9100 or (559) 292-1981 to obtain a Repair Authorization number (RA), and provide the following information:

1. Model and serial number
2. Date of shipment, P.O. number, Sales Order number, or Pelco invoice number
3. Details of the defect or problem

If there is a dispute regarding the warranty of a product which does not fall under the warranty conditions stated above, please include a written explanation with the product when returned.

Method of return shipment shall be the same or equal to the method by which the item was received by Pelco.

RETURNS

In order to expedite parts returned to the factory for repair or credit, please call the factory at (800) 289-9100 or (559) 292-1981 to obtain an authorization number (CA number if returned for credit, and RA number if returned for repair).

All merchandise returned for credit may be subject to a 20% restocking and refurbishing charge.

Goods returned for repair or credit should be clearly identified with the assigned CA or RA number and freight should be prepaid. Ship to the appropriate address below.

If you are located within the continental U.S., Alaska, Hawaii or Puerto Rico, send goods to:

Service Department
Pelco
3500 Pelco Way
Clovis, CA 93612-5699

If you are located outside the continental U.S., Alaska, Hawaii or Puerto Rico and are instructed to return goods to the USA, you may do one of the following:

If the goods are to be sent by a COURIER SERVICE, send the goods to:

Pelco
3500 Pelco Way
Clovis, CA 93612-5699 USA

If the goods are to be sent by a FREIGHT FORWARDER, send the goods to:

Pelco c/o Expeditors
473 Eccles Avenue
South San Francisco, CA 94080 USA
Phone: 650-737-1700
Fax: 650-737-0933

REVISION HISTORY

| Manual # | Date | Comments |
|-----------|------|---|
| C1473SM-A | 9/98 | Original version. |
| | 7/00 | Revised Figure 2 and Table B for new heater elements per ECO# 00-6032. |
| C1473SM-B | 9/04 | Revised parts list per ECO# 04-9848. Product redesigned to fit CC3610/CC3710/CC3770/MC3610/MC3710 Series cameras. |